

TECHNICAL EXHIBIT  
APPLICATION FOR FM CONSTRUCTION PERMIT  
RADIO STATION WJMZ-FM  
ANDERSON, SOUTH CAROLINA

AUGUST 20, 2012

CH 297C0    100 KW    313 M



TECHNICAL EXHIBIT  
APPLICATION FOR FM CONSTRUCTION PERMIT  
RADIO STATION WJMZ-FM  
ANDERSON, SOUTH CAROLINA  
CH 297C0 100 KW 313 M

Table of Contents

	Technical Narrative
Figure 1	Sketch of Antenna and Supporting Structure
Figure 2	Map of Predicted Coverage Contours
Figure 3	Anderson, South Carolina Allocation Study



TECHNICAL EXHIBIT  
APPLICATION FOR FM CONSTRUCTION PERMIT  
RADIO STATION WJMZ-FM  
ANDERSON, SOUTH CAROLINA  
CH 297C0 100 KW 313 M

Technical Narrative

The technical exhibit of which this narrative is part was prepared in support of an application for a new construction permit for WJMZ-FM on Channel 297C0 assigned to Anderson, South Carolina.

Proposed Transmitter Location

A sketch showing the proposed antenna and supporting structure is shown on Figure 1. The antenna registration number for this proposed supporting structure is 1045371.

WJMZ-FM will be co-located with WROQ(FM) on Channel 266C1 at Anderson, South Carolina. As WROQ(FM) employs a directional antenna, WJMZ-FM will ensure its installed antenna will not adversely affect the WROQ(FM) radiation pattern.



---

Interference Concerns

The 115 dBu predicted "blanketing" contour of the proposed station would extend radially less than 4000 meters from the transmitting site. No interference is expected. However, the applicant recognizes its responsibility to resolve complaints of interference, including blanketing and receiver-induced interference as required by Sections 73.315(b), 73.316(e) and 73.318.

Coverage Contours

The predicted coverage contours for the proposed operation were calculated in accordance with the provisions of Section 73.313. In accordance with current FCC practice, the distances to the contours were calculated without consideration given to terrain roughness correction factors.

The average terrain elevations from 3 to 16 kilometers along eight radials evenly spaced at 45-degree intervals were obtained from the N.G.D.C. 30-second terrain database. The terrain elevations were then used in combination with the effective radiated power for determining the distances to coverage contours.

As can be calculated using the map provided in Figure 2, the FCC predicted 70 dBu coverage contour entirely encompasses the principal community of Anderson, South Carolina.



Allocation Study

Figure 3 is an allocation study for channel 297C0 at the proposed site. The figure contains a tabulation of actual and required separation distances from other pertinent stations and allotments. The proposed site meets the FCC's minimum separation requirements, specified in Section 73.207(b) of the Commission's Rules, to all assignments and stations except toward WRHM(FM) on Channel 296A at Lancaster, South Carolina, WVSZ(FM) on Channel 297A at Chesterfield, South Carolina and WNKT(FM) on Channel 298C2 at Eastover, South Carolina.

Section 73.215 processing is requested towards all of the aforementioned stations. As can be seen in the map provided in Sheet 2 of Figure 3, there is no prohibited contour overlap between the proposed WJMZ-FM and either WRHM(FM), WVSZ(FM) and WNKT(FM).

Radiofrequency Electromagnetic Field Exposure Analysis

The WJMZ-FM facility will be surveyed at ground level with respect to the radiofrequency electromagnetic field considerations after construction is complete. The results of the survey will be provided with the application for license.

Access to the transmitting site will be restricted and appropriately marked with warning signs. When it becomes necessary for workers to ascend the tower, appropriate measures, such as reduction or shut down of power if necessary, shall be taken to ensure that the human exposure to radiofrequency radiation will not exceed the FCC guidelines.



It is noted that this statement only addresses the potential for radiofrequency electromagnetic field exposure. All other aspects of the environmental processing analysis should have been completed by the tower owner.

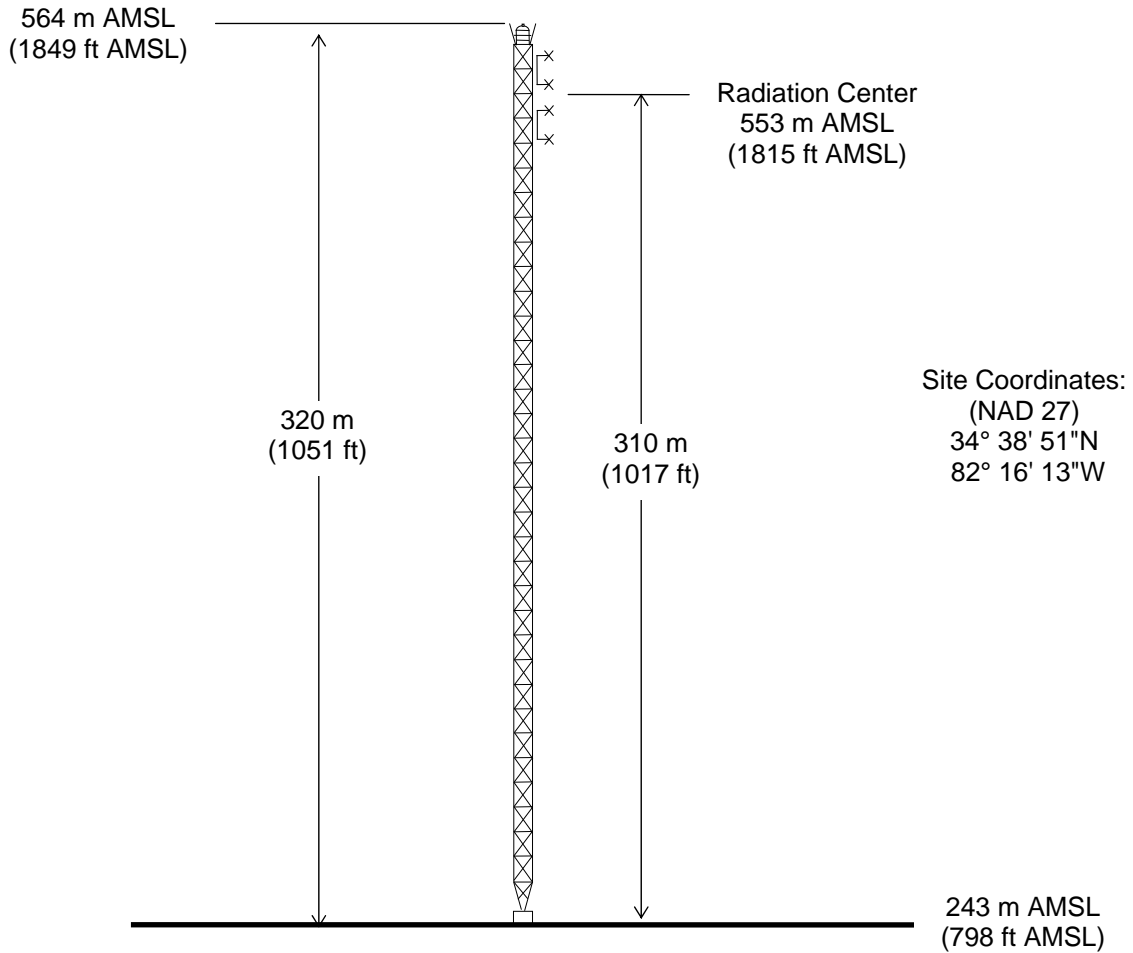
Charles A. Cooper

du Treil, Lundin & Rackley, Inc.  
201 Fletcher Avenue  
Sarasota, Florida 34237  
941.329.6000

August 20, 2012



ASRN: 1045371



Not to Scale

## **ANTENNA AND SUPPORTING STRUCTURE**

RADIO STATION WJMZ-FM

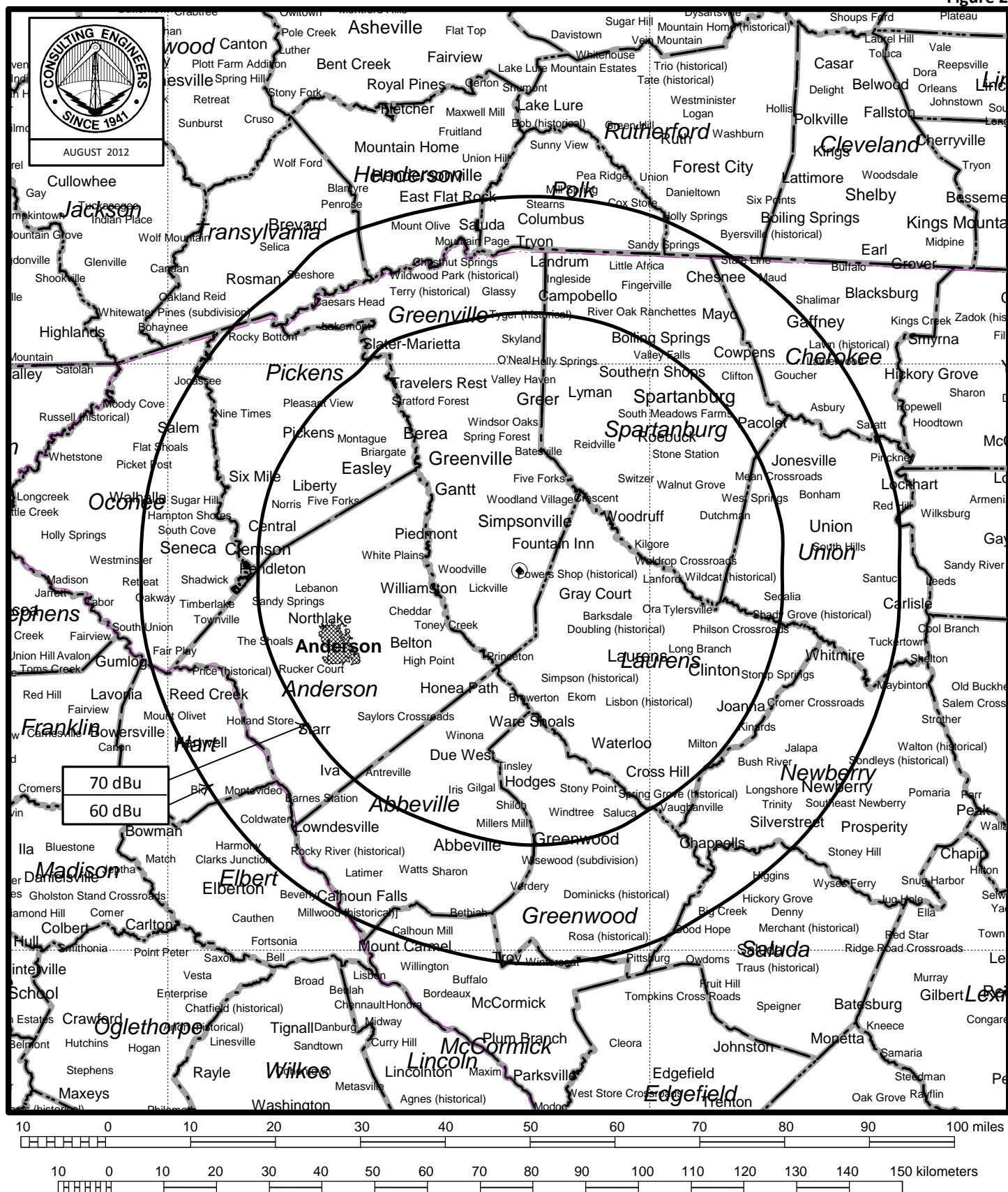
ANDERSON, SOUTH CAROLINA

CH 297C0 100 KW (MAX-DA) 313 M

du Treil, Lundin & Rackley, Inc. Sarasota, Florida



Figure 2



## FCC PREDICTED COVERAGE CONTOURS

RADIO STATION WJMZ-FM  
ANDERSON, SOUTH CAROLINA  
CH 297C0 100 KW 313 M

du Treil, Lundin & Rackley, Inc., Sarasota, Florida



TECHNICAL EXHIBIT  
APPLICATION FOR FM CONSTRUCTION PERMIT  
RADIO STATION WJMZ-FM  
ANDERSON, SOUTH CAROLINA  
CH 297C0 100 KW 313 M

Channel 297C0 Anderson, South Carolina Allocation Study

34° 38' 51" North Latitude  
82° 16' 13" West Longitude

<i>Callsign</i>	<i>Status</i>	<i>Chan.</i>	<i>Serv.</i>	<i>Freq.</i>	<i>City</i>			<i>State</i>	<i>Latitude</i>	<i>Dist.(km)</i>	<i>Sep.(km)</i>	<i>Spacing(km)</i>
<i>Fac. ID</i>	<i>ARN</i>			<i>Class</i>	<i>DA</i>	<i>Ant. ID</i>	<i>ERP(kW)</i>	<i>HAAT(m)</i>	<i>Longitude</i>	<i>Bear.(deg)</i>	<i>73.215</i>	<i>Comment</i>
<b>WROO</b>	LIC	244	FM	96.7	MAULDIN			SC	034-55-16	32.64	25	7.64
25240	BLH 20020404AAC			A	D	43031	0.7	288	082-24-05	338.55		
<b>WMIT</b>	LIC	295	FM	106.9	BLACK MOUNTAIN			NC	035-44-06	120.66	105	15.66
5970	BMLH 19960327KD			C	N		36	942	082-17-10	359.32	<b>99</b>	
<b>WRHM</b>	LIC	296	FM	107.1	LANCASTER			SC	034-51-34	136.69	152	-15.31
50776	BLH 20070820ABW			A	N		2.4	159.8	080-47-59	79.63	130 Y	
<i>(Section 73.215 processing requested towards WRHM(FM) on Channel 296A at Lancaster, South Carolina).</i>												
<b>WYFA</b>	LIC	296	FM	107.1	WAYNESBORO			GA	033-10-42	165.01	163	2.01
5167	BLH 19931118KA			C3	D	14293	25	90	081-59-24	170.93	152 Y	
<b>WJMZ-FM</b>	LIC	297	FM	107.3	ANDERSON			SC	034-42-07	31.29		
1303	BMLH 20010628AAA			C0	N		100	308	082-36-19	281.27		
<i>(Presently licensed facility.)</i>												
<b>WVSZ</b>	LIC	297	FM	107.3	CHESTERFIELD			SC	034-43-12	199.43	215	-15.57
14911	BMLH 20080304AAI			A	N		4.5	100	080-05-45	87.06	193 Y	
<i>(Section 73.215 processing requested towards WVSZ(FM) on Channel 297A at Chesterfield, South Carolina)</i>												
<b>WXLZ-FM</b>	LIC	297	FM	107.3	LEBANON			VA	036-50-38	243.82	215	28.82
74349	BLH 19940808KC			A	N		1	236	082-11-04	1.79	193 Y	
<b>WNKT</b>	LIC	298	FM	107.5	EASTOVER			SC	033-45-46	165.59	176	-10.41
38900	BLH 20071120AJA			C2	N		40	167	080-49-23	126.06	163 Y	
<i>(Section 73.215 processing requested towards WNKT(FM) on Channel 298C2 at Easterover, South Carolina).</i>												
<b>WAMJ</b>	LIC	298	FM	107.5	ROSWELL			GA	033-55-01	195.44	176	19.44
31872	BLH 20111123FBI			C2	D	105707	33	185	084-12-06	245.95	163 Y	
<b>WPRW-FM</b>	LIC	299	FM	107.7	MARTINEZ			GA	033-36-47	114.77	89	25.77
46967	BLH 19940421KB			C2	N		24.5	176	082-17-51	181.26	83 Y	
<b>WLNK</b>	LIC	300	FM	107.9	CHARLOTTE			NC	035-21-51	126.89	105	21.89
30834	BMLH 20050728ALG			C	N		100	516	081-11-13	50.76	99 N	



