

73.525 Compliance

There are several considerations outlined in 47 C.F.R. 73.525 for TV channel 6 protection. Outlined below are the various factors as they apply to the proposed operation and KVIE-TV.

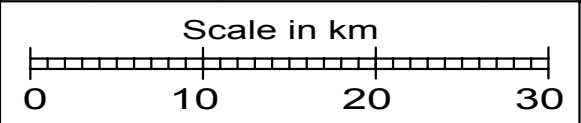
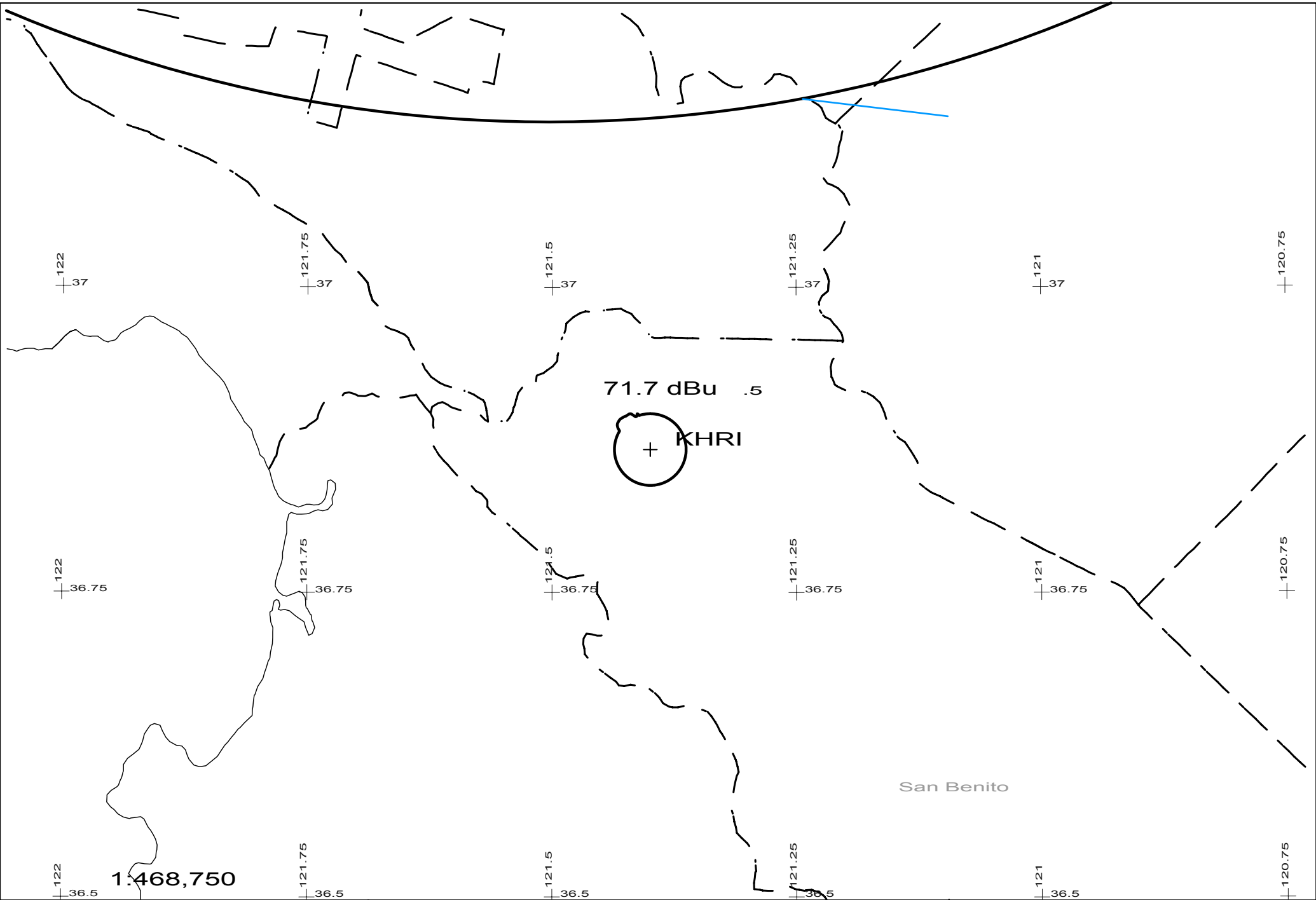
1. Distance between proposed operation and KVIE-TV

47 C.F.R. 73.525(a)(1) requires a minimum separation of 187 kilometers for a channel 214 operation. The distance between the proposed station and KVIE-TV is 156.16 kilometers.

2. Population Limitation

When a proposed non-commercial station is not co-located with the channel 6 station in question, the applicant is required to show that the interference area (as predicted by the procedures outlined in 47 C.F.R. 73.525(e)(1)) contains no more than 3,000 persons. The interfering contour of the proposed operation does not cross the Grade B contour of KVIE-TV (see Exhibit 18-B); therefore there is no interference area.

For the reasons outlined above, the proposed operation fully complies with the provisions of 47 C.F.R. 73.525.



KHRI 214A .17kW 102M AMSL
N. Lat. 36 52 02 W. Lng. 121 23 58

KHRI
EMF - 01/04

Channel 6 vs Channel 214

Channel 6 Contour	Value from 73.599	Channel 214 Contour	Adjusted 6 dB
47 (grade B)	24.7	71.7	77.7
48	23.0	71.0	77.0
49	21.5	70.5	76.5
50	20.0	70.0	76.0
51	18.7	69.7	75.7
52	17.5	69.5	75.5
53	16.2	69.2	75.2
54	15.0	69.0	75.0
55	14.0	69.0	75.0
56	13.0	69.0	75.0
57	12.0	69.0	75.0
58	11.0	69.0	75.0
59	10.3	69.3	75.3
60	9.5	69.5	75.5
61	8.8	69.8	75.8
62	8.2	70.2	76.2
63	7.5	70.5	76.5
64	7.0	71.0	77.0
65	6.4	71.4	77.4
66	6.0	72.0	78.0
67	5.5	72.5	78.5

Channel 6 Contour	Value from 73.599	Channel 214 Contour	Adjusted 6 dB
68 (grade A)	5.2	73.2	79.2
69	4.8	73.8	79.8
70	4.6	74.6	80.6
71	4.5	75.5	81.5
72	4.3	76.3	82.3
73	4.1	77.1	83.1
74	3.9	77.9	83.9
75	3.7	78.7	84.7
76	3.5	79.5	85.5
77	3.4	80.4	86.4
78	3.2	81.2	87.2
79	3.0	82.0	88.0
80	2.9	82.9	88.9
81	2.7	83.7	89.7
82	2.5	84.5	90.5
83	2.4	85.4	91.4
84	2.2	86.2	92.2
85	2.1	87.1	93.1
86	1.9	87.9	93.9
87	1.7	88.7	94.7
88	1.6	89.6	95.6
89	1.5	90.5	96.5
90	1.3	91.3	97.3