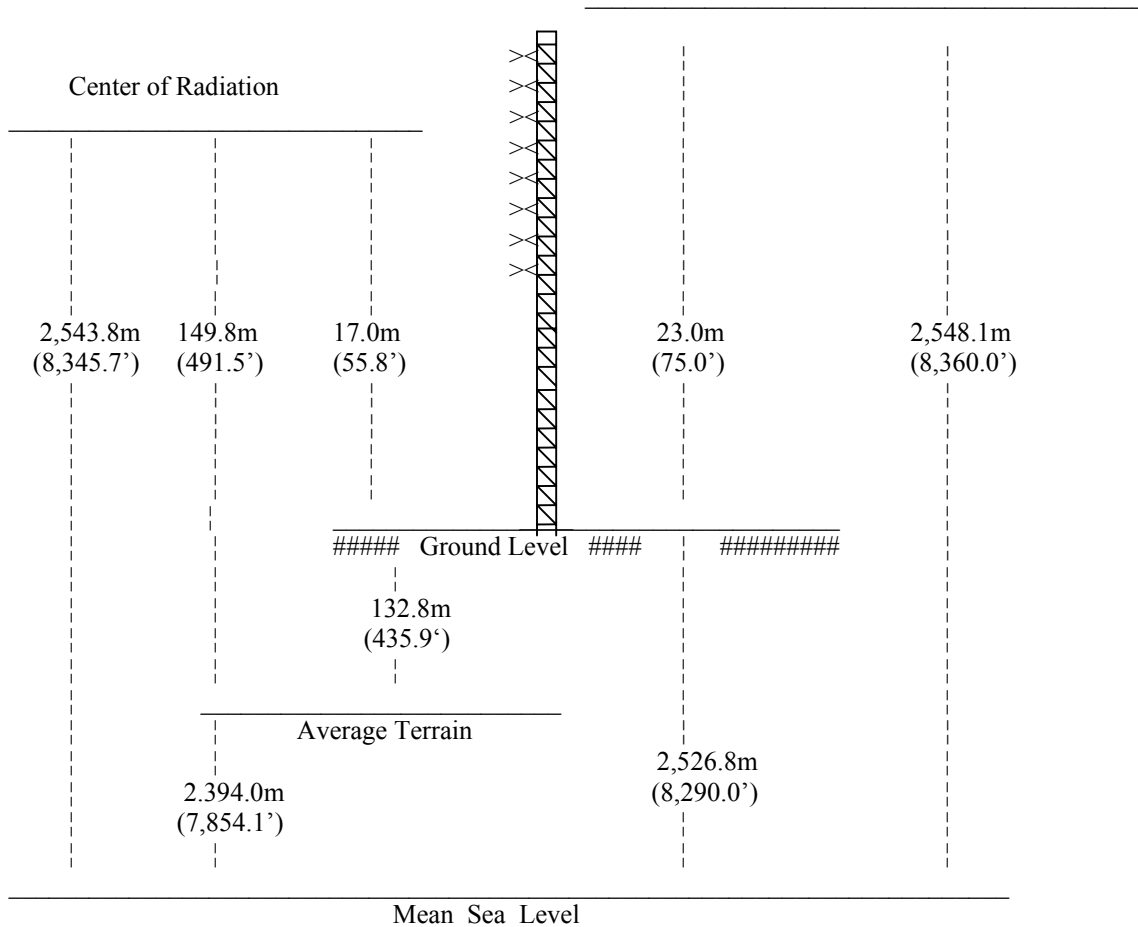


**Engineering Statement
In Support of an
Application for a Construction Permit**

KKCS-FM, Channel 270C2, Colorado Springs, CO

KKCS-FM Supporting Structure (Vertical Sketch)



Proposed Location - 39° 08' 11" N. Lat. 104° 55' 34" W. Long. [NAD 27]

NOT DRAWN TO SCALE

Proposed antenna - 8 element ½ wavelength spaced antenna.