

REFERENCE

39 19 18 N

84 57 33 W

CH# 205A - 88.9 MHz, Pwr= 4.6 kw, HAAT=114.0 M, COR= 381 M

Average Protected F(50-50)= 28.29 km

Ave. F(50-10) 40 dBu= 84.9 54 dBu= 43.4 80 dBu= 9.1 100 dBu= 2.7

DISPLAY DATES

DATA 02-08-06

SEARCH 02-13-06

CH CITY	CALL	TYPE STATE	AZI. <--	DIST FILE #	LAT. LNG.	Pwr(kw) HAAT(M)	COR(M) INT(km)	PRO(km) LICENSEE	*IN* (Overlap	*OUT* in km)
203B Oxford	WMUB	LIC DCN OH	28.5 208.5	29.81 BLED19940407KB	39 33 26 84 47 35	2.205 153	449 2.4	27.2 The President & Trustees	4.11	0.50 0
204B Batavia	WOBO	LIC DEN OH	111.0 291.0	79.85 BLED19880202KB	39 03 43 84 05 50	2.307 171	402 43.6	28.9 Educational Community Radi	2.72	0.72<
SHARE TIME OPERATION WITH WCNE, BATAVIA, OH.										
205C1 Richmond	WEKU	LIC CN KY	160.9 340.9	169.36 BMLLED19990407KA	37 52 45 84 19 33	50.000 207	482 145.2	58.0 Eastern Kentucky Universit	0.02<	37.93
206A Greensburg	WAUZ	LIC VN IN	260.0 80.0	53.26 BLED19990209KA	39 14 13 85 34 00	0.800 138	410 30.4	20.6 Good Shepherd Radio Inc	1.62	1.25
Vertical Polarization Only										
205A Union City	WJYW	LIC CN IN	8.0 188.0	97.62 BLED19970218KA	40 11 32 84 47 58	4.100 73	414 75.4	22.4 Positive Alternative Radio	0.34<	7.24
205A Wilberforce	WCSUFM	LIC CX OH	64.4 244.4	103.05 BMLLED20030324AAJ	39 42 57 83 52 27	1.000 75	350 54.9	15.7 Central State University	19.76	2.25
206A Morrow	WLMH	LIC CN OH	87.4 267.4	70.95 BLED19831024AF	39 20 51 84 08 13	0.100 41	276 9.4	6.5 Little Miami Local Schools	31.35	18.28
208A Hamilton	WHSS	LIC CN OH	66.8 246.8	31.02 BLED19780829AG	39 25 51 84 37 40	0.190 61	314 1.0	9.5 Hamilton School District	1.05	18.73
204B Indianapolis	WICR	LIC H IN	301.5 121.5	124.42 BLED20010813AAA	39 53 58 86 12 02	5.000 295	534 64.8	43.6 University Of Indianapolis	34.81	43.20
207B1 Richmond	WVXR	LIC CN IN	12.9 192.9	62.34 BLED19890117KB	39 52 08 84 47 47	4.200 63	397 2.1	21.1 Cincinnati Public Radio, I	38.05	39.35
202A Cincinnati	WAIF	LIC CN OH	117.8 297.8	46.32 BMLLED19920206KF	39 07 36 84 29 06	1.600 97	321 1.9	20.6 The Real Stepchild Radio O	10.36	22.67
Share Tile operation with WJVS, Cincinnati, Ohio										
207A Reading	WMKV	LIC DCN OH	103.4 283.4	46.77 BLED19950505KA	39 13 23 84 25 56	0.098 42	288 0.7	6.6 Lifesphere	14.47	37.24
202A Cincinnati	WJVS	LIC CN OH	94.2 274.2	47.12 BLED1525	39 17 21 84 24 52	0.175 24	260 0.9	6.5 Great Oaks Joint Voc. Sch.	15.43	37.76
Share Time operation with WAIF, Cincinnati, Ohio										
205A Oolitic	WMYJFM	LIC V IN	254.4 74.4	134.83 BLED20050831ADL	38 59 14 86 27 31	5.200 59	277 76.2	21.6 Spirit Educational Radio,	37.66	44.24
06Z1C Indianapolis	WRTV	LI HY IN	301.5 121.5	124.43 BMLCT20050414ABE	39 53 57 86 12 04	100.000 295	534	103.1 To Grd B= Mcgraw-hill Broadcasting C		21.32

ERP and HAAT are on direct line to and from reference station.
 "*"Affixed to 'IN' or 'Out' values = site inside protected contour. "<" = Contour Overlap

Contour Protection Study
Miamitown OH vs WMUB

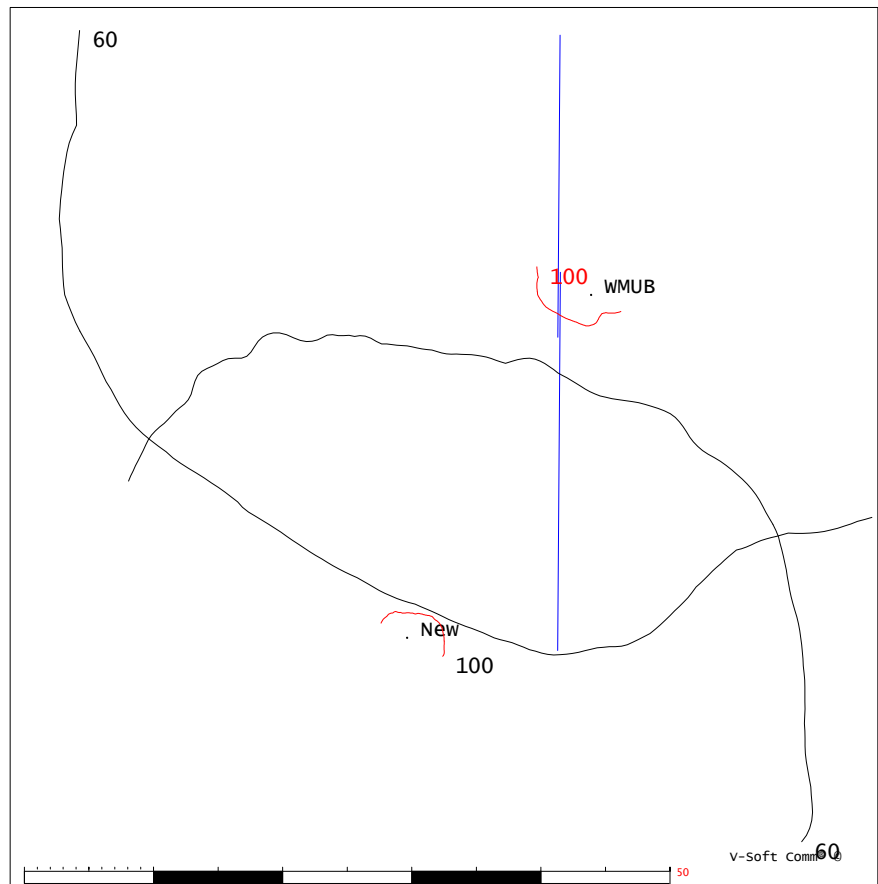
FMCONT Allocation Study

02-15-2006

New on CH 205 A
4.6 kW 381M COR DA
Prot. = 60 dBu
Intef. = 100 dBu

WMUB CH 203 B
24.5kW, 449 M COR DA
Prot. = 60 dBu
Intef. = 100 dBu
File # BLED19940407KB

1:613,281



Contour Protection Study
Miamitown OH vs WOBO

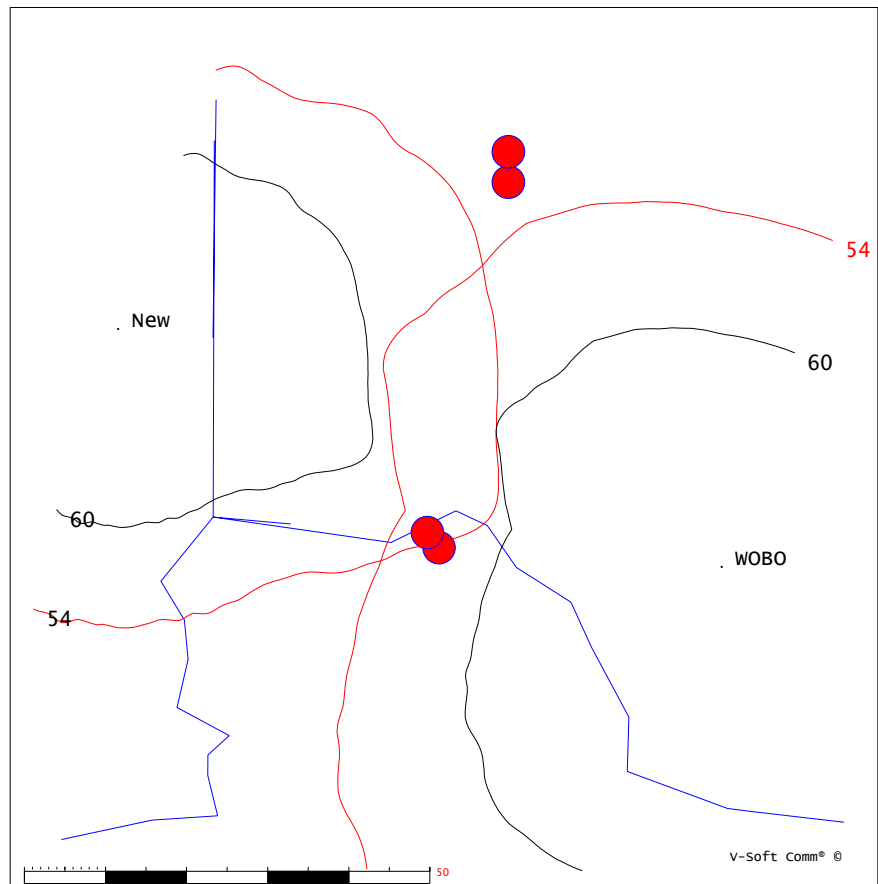
FMCONT Allocation Study

02-15-2006

New on CH 205 A
4.6 kW 381M COR DA
Prot. = 60 dBu
Intef. = 54 dBu

WOBO CH 204 B
15.5kW, 402 M COR DA
Prot. = 60 dBu
Intef. = 54 dBu
File # BLED19880202KB

1:976,563



Contour Protection Study
Miamitown OH vs WEKU

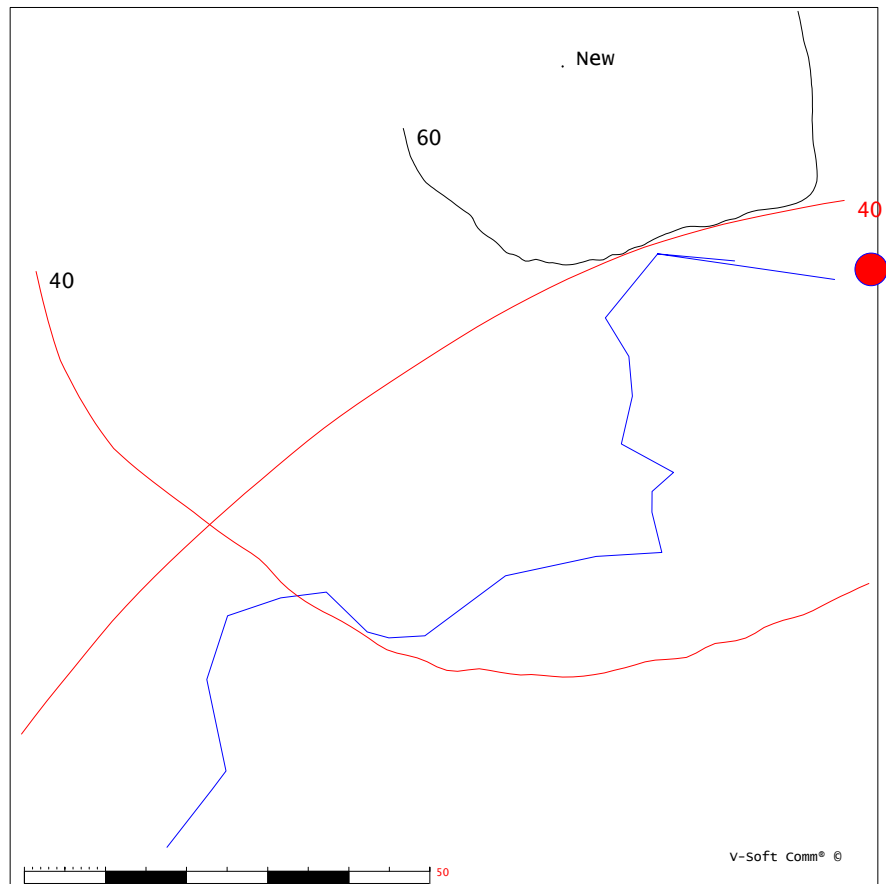
FMCONT Allocation Study

02-15-2006

New on CH 205 A
4.6 kw 381M COR DA
Prot. = 60 dBu
Intef. = 40 dBu

WEKU CH 205 C1
50kw, 482 M COR
Prot. = 60 dBu
Intef. = 40 dBu
File # BMLED19990407KA

1:976,563



Contour Protection Study
Miamitown OH vs WAUZ

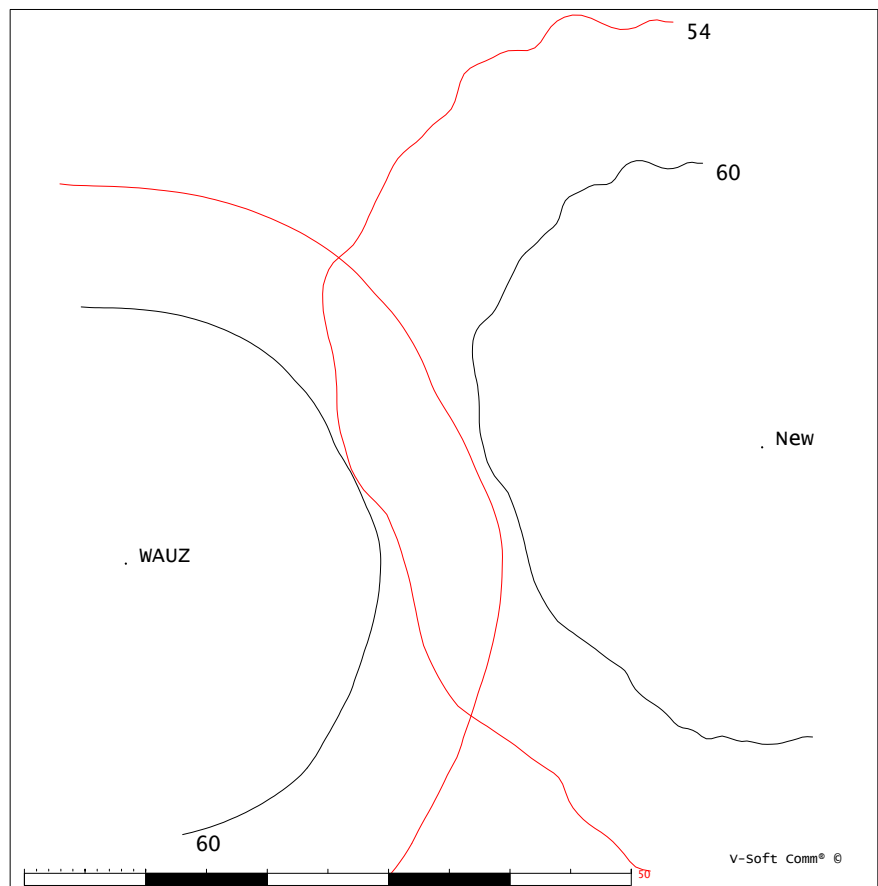
FMCONT Allocation Study

02-15-2006

New on CH 205 A
4.6 kW 381M COR DA
Prot. = 60 dBu
Intef. = 54 dBu

WAUZ CH 206 A
.8kW, 410 M COR
Prot. = 60 dBu
Intef. = 54 dBu
File # BLED19990209KA

1:652,344



Contour Protection Study
Miamitown OH vs WJYW

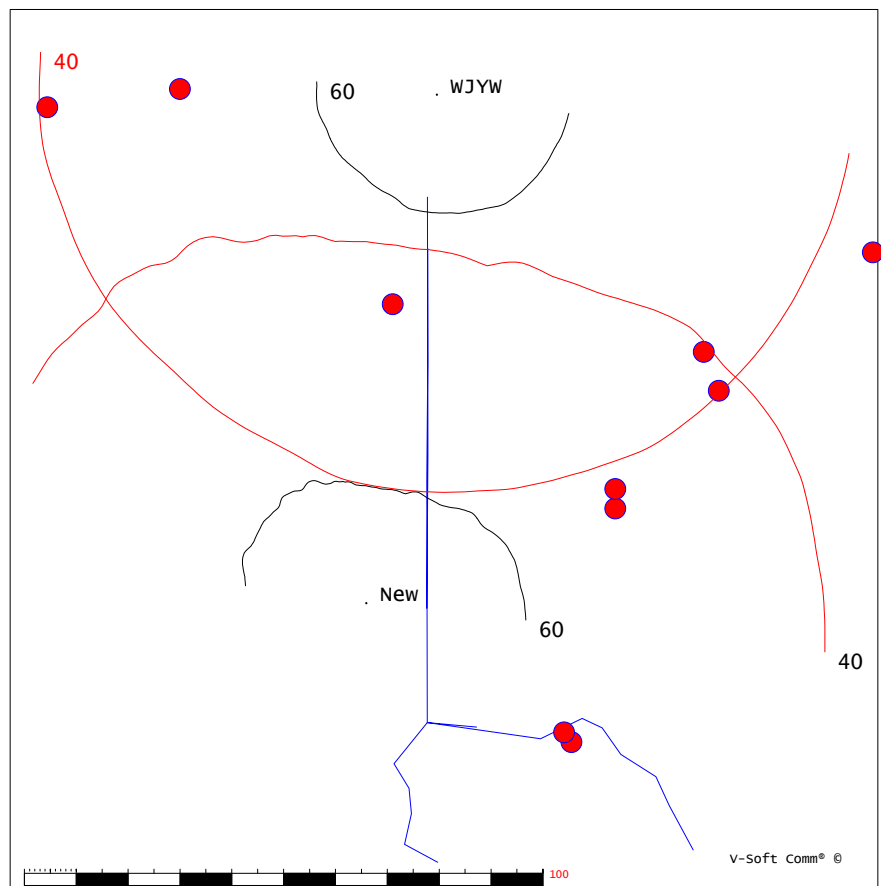
FMCONT Allocation Study

02-15-2006

New on CH 205 A
4.6 kW 381M COR DA
Prot. = 60 dBu
Intef. = 40 dBu

WJYW CH 205 A
4.1kW, 414 M COR
Prot. = 60 dBu
Intef. = 40 dBu
File # BLED19970218KA

1:1,527,344



Contour Protection Study
Miami town OH vs WCSU-FM

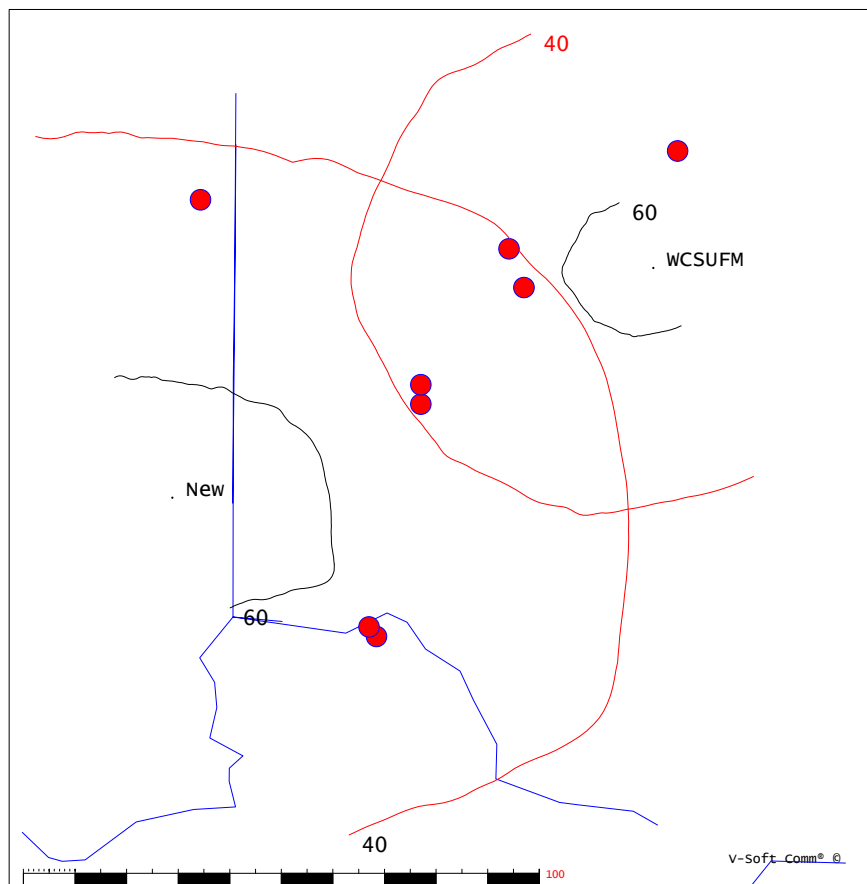
FMCONT Allocation Study

02-15-2006

New on CH 205 A
4.6 kW 381M COR DA
Prot. = 60 dBu
Intef. = 40 dBu

WCSUFM CH 205 A
1kw, 350 M COR
Prot. = 60 dBu
Intef. = 40 dBu
File # BMLED20030324AAJ

1:1,535,156



Contour Protection Study
Miamitown OH vs WHSS

FMCONT Allocation Study

02-15-2006

New on CH 205 A
4.6 kW 381M COR DA
Prot. = 60 dBu
Intef. = 100 dBu

WHSS CH 208 A
.19kW, 314 M COR
Prot. = 60 dBu
Intef. = 100 dBu
File # BLED19780829AG

1:445,313

