

Geographic Coordinate System (WGS84)

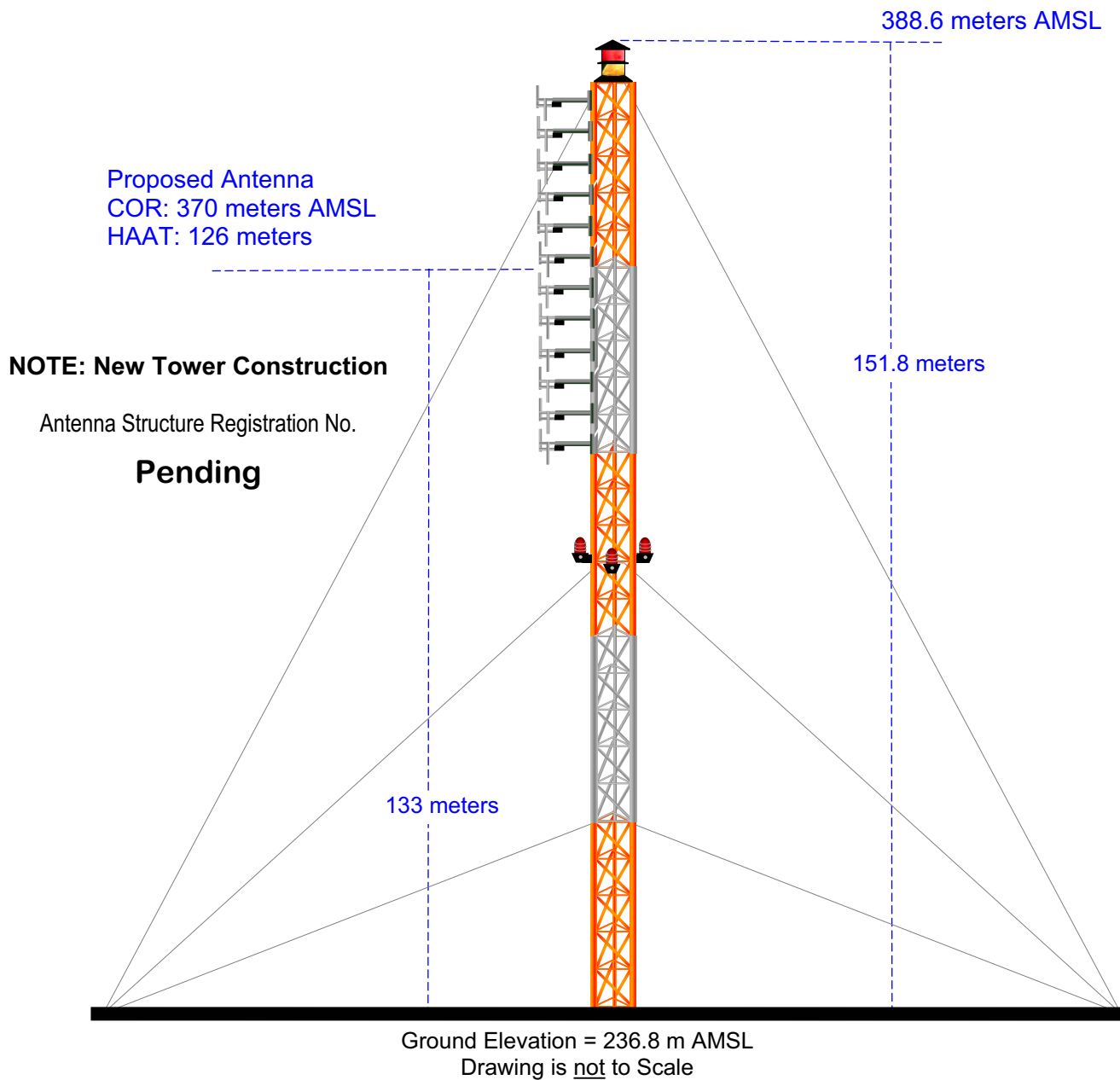
## Exhibit 22.2

### Vertical Plan of Antenna System

---

The site is located on CR 407, 0.25 km north of Little Dawson Creek.  
City of Newberry. Luce County, Michigan.

Site Location  
NL: 46° 32' 02"  
WL: 85° 35' 24"



**MUNN-REESE, INC.**  
Broadcast Engineering Consultants  
Coldwater, MI 49036