

EXHIBIT 12.1 (As Amended)

VERTICAL PLAN OF ANTENNA SYSTEM

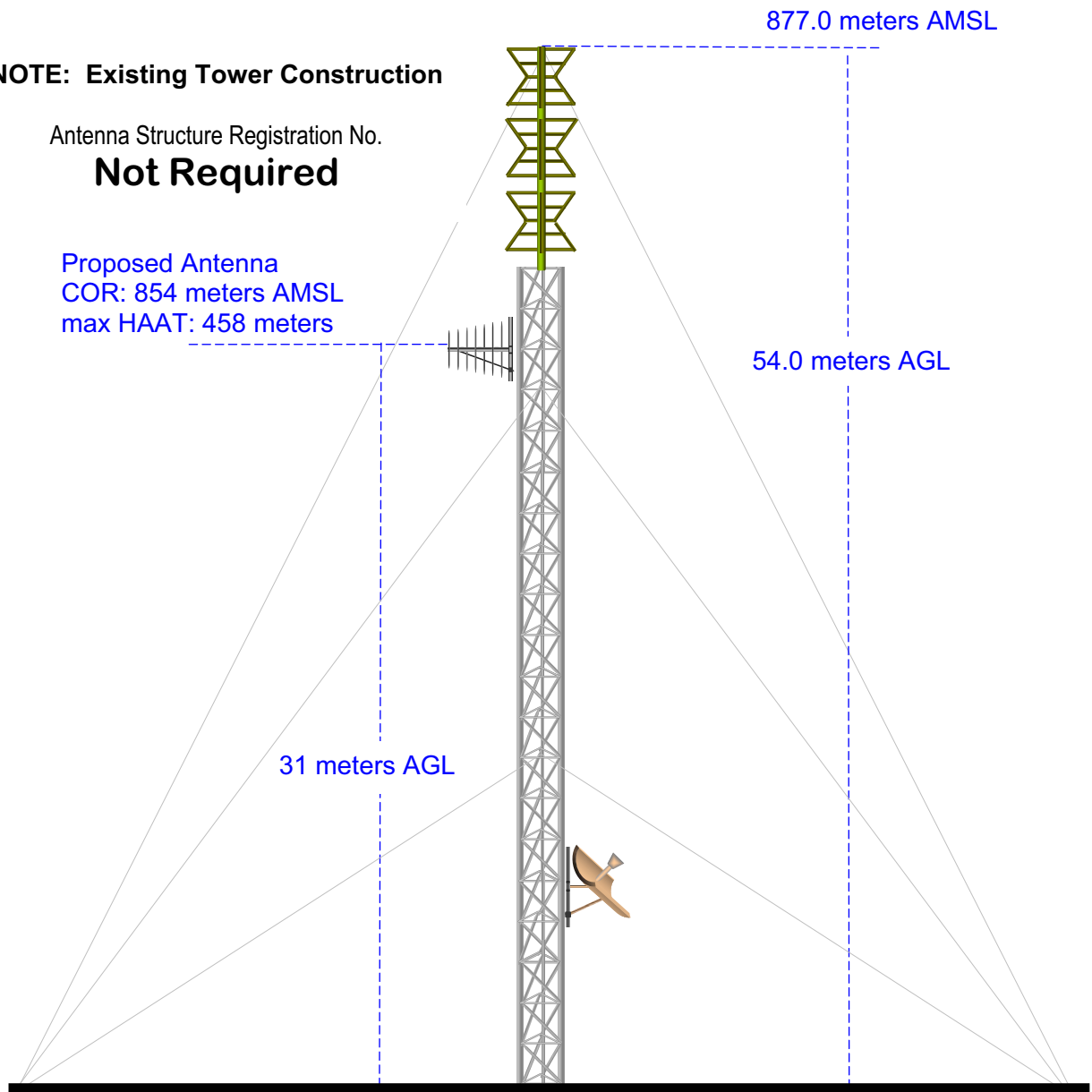
The site is located on Laurel Hill, city of Morrellville,
Cambria County, Pennsylvania.

Site Location
NL: 40° 22' 16"
WL: 78° 58' 58"

NOTE: Existing Tower Construction

Antenna Structure Registration No.
Not Required

Proposed Antenna
COR: 854 meters AMSL
max HAAT: 458 meters



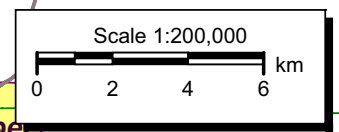
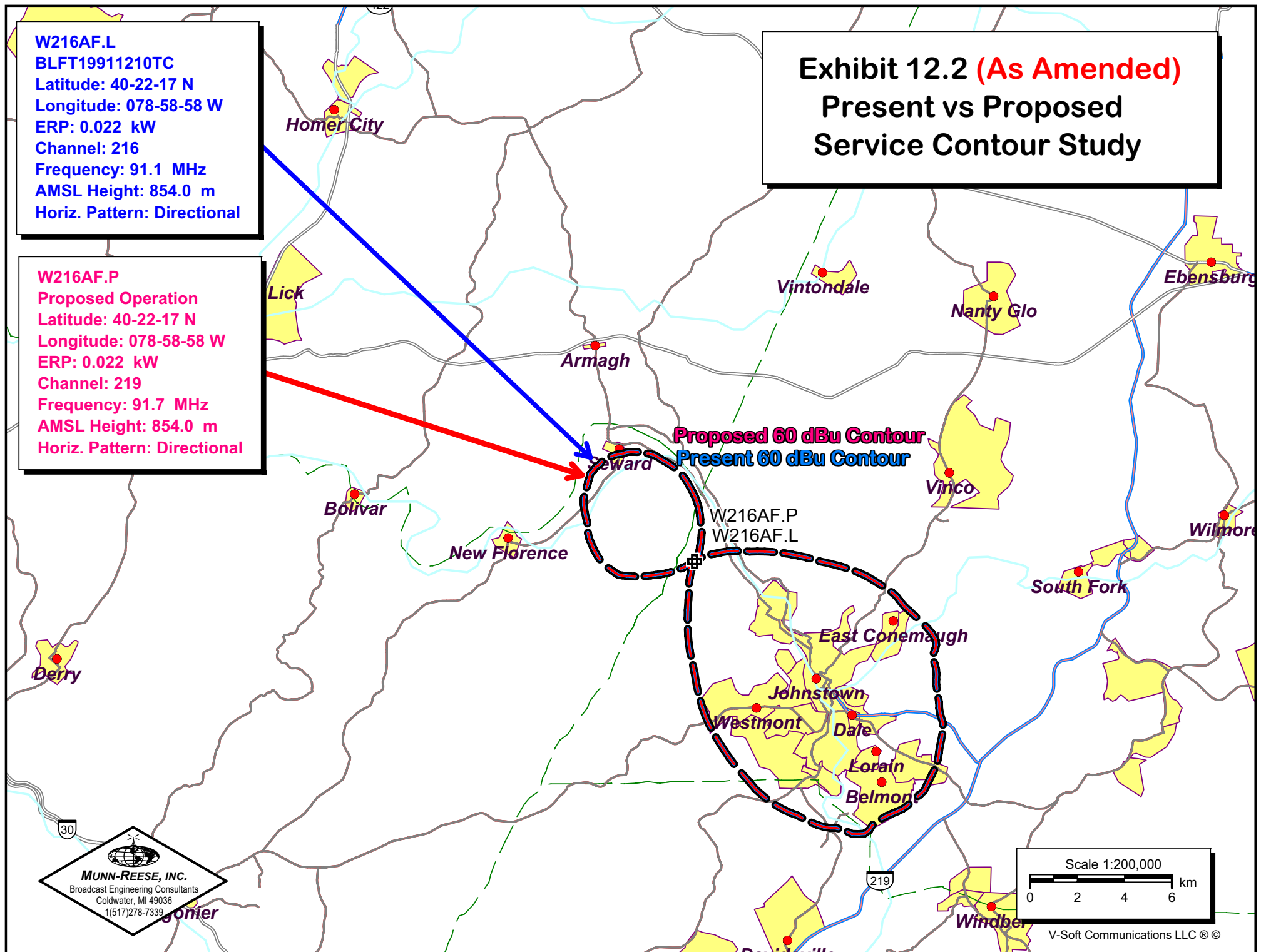
Ground Elevation =823.0 m AMSL
Drawing is not to Scale

MUNN-REESE, INC.
Broadcast Engineering Consultants
Coldwater, MI 49036

W216AF.L
BLFT19911210TC
Latitude: 40-22-17 N
Longitude: 078-58-58 W
ERP: 0.022 kW
Channel: 216
Frequency: 91.1 MHz
AMSL Height: 854.0 m
Horiz. Pattern: Directional

W216AF.P
Proposed Operation
Latitude: 40-22-17 N
Longitude: 078-58-58 W
ERP: 0.022 kW
Channel: 219
Frequency: 91.7 MHz
AMSL Height: 854.0 m
Horiz. Pattern: Directional

Exhibit 12.2 (As Amended) Present vs Proposed Service Contour Study



V-Soft Communications LLC ©

Exhibit 12.3 (As Amended) Proposed vs Primary Service Contour Study

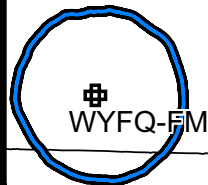
W216AF.P
Proposed Operation
Latitude: 40-22-17 N
Longitude: 078-58-58 W
ERP: 0.022 kW
Channel: 219
Frequency: 91.7 MHz
AMSL Height: 854.0 m
Horiz. Pattern: Directional

Proposed 60 dBu Contour


W216AF.P

WYFQ-FM
BLED19951010KE
Latitude: 35-02-57 N
Longitude: 080-18-38 W
ERP: 8.70 kW
Channel: 228
Frequency: 93.5 MHz
AMSL Height: 310.0 m
Horiz. Pattern: Omni

Present 60 dBu Contour



MUNN-REESE, INC.
Broadcast Engineering Consultants
Coldwater, MI 49036
1(517)278-7339

Scale 1:3,500,000

0 40 80 120 km

Exhibit 12.4 (As Amended)

Tabulation of Proposed Allocation

Tabulations of contours will be supplied upon request.

Bible Broadcasting Network, I

REFERENCE		CH# 219D - 91.7 MHz, Pwr= 0.022 kW, HAAT=331.0M, COR= 854 M							DISPLAY DATES	
40 22 17 N. 78 58 58 W.		Average Protected F(50-50)= 12.9 km Ave. F(50-10) 40 dBu= 43.2 54 dBu= 19.0 80 dBu= 2.8 100 dBu= .3							DATA 06-03-06 SEARCH 06-06-06	
CH CITY	CALL	TYPE STATE	AZI. <--	DIST FILE #	LAT. LNG.	Pwr (kW) HAAT (M)	COR (M) INT (km)	PRO (km) LICENSEE	*IN* (Overlap in km)	*OUT*
219D Johnstown	W216AF	APP C PA	0.0 0.0	0.00 BPFT20060509AAI	40 22 17 78 58 58	0.022 361	854 45.4	13.5 Bible Broadcasting Network	-48.17*< -26.63*<	
216D Johnstown	W216AF	LIC DHN PA	0.0 0.0	0.00 BLFT19911210TC	40 22 17 78 58 58	0.000 361	854 0.0	2.8 Bible Broadcasting Network	-2.81*< -2.81*<	
Translator for WLIC, Frostburg, MD										
221A	WYOT¹	LIC C	236.7	0.11	40 22 15	0.580	846	25.4	-1.74*<	-25.32*<
Johnstown		PA	56.7	BMLH19991018ABR	78 59 02	255	1.5	Forever Broadcasting, Llc		
219A Mcconnellsburg	990901	APP CX PA	118.0 298.6	89.93 BPED19990901MA	39 59 21 78 03 07	1.000 -170	277 35.6	10.2 Morris Broadcasting & Comm	42.59 40.64	
216A Bedford	WUFR.C	CP VX PA	103.7 284.0	35.81 BPED19981023MD	40 17 40 78 34 25	0.470 296	945 1.5	26.0 Family Stations, Inc.	24.80 9.64	
219A Clarion	WCUCFM	LIC CN PA	340.5 160.3	98.88 BLED19960919KB	41 12 35 79 22 39	3.200 85	525 74.0	22.7 Clarion State College	20.15 56.40	
219A Washington	WNJR	LIC CX PA	258.6 77.8	109.68 BLED20030304AAO	40 10 13 80 14 43	0.950 45	392 43.7	12.2 Washington And Jefferson C	62.97 82.84	
219A Morgantown	WWVUFM	LIC DCN WV	225.3 44.7	115.78 BLED19931210KF	39 38 09 79 56 38	0.547 117	440 56.0	17.2 West Virginia University B	59.44 96.13	
220A Tyrone	AP220	APP VX PA	53.9 234.4	68.57 BNPED20000207AAU	40 43 56 78 19 33	0.280 144	809 24.0	16.0 Pensacola Christian Colleg	44.25 51.92	
220B1 Frostburg	WFWM	LIC NEN MD	175.3 355.3	87.98 BLED19970825KA	39 34 54 78 53 53	1.300 301	913 50.1	33.3 Frostburg State University	31.07 44.25	
From Channel 219A										
217B1 Pittsburgh	WYEPFM	LIC CN PA	273.5 92.9	80.67 BLED19830420AP	40 24 42 79 55 53	18.000 138	436 4.3	41.6 Pittsburgh Comm. B/cing. C	72.25 39.06	
221D Greensburg	AP221	APP C PA	261.4 81.0	47.03 BNPFT20030317ADO	40 18 24 79 31 47	0.015 38	395 0.3	3.9 Bible Broadcasting Network	43.40 43.09	
06Z1C	WJACTV²	LI HN	0.0	0.00	40 22 17	70.800	868	105.0	132.0R	-132.0M
Johnstown		PA	0.0	BLCT19880502KE	78 58 58	341	0.2	Wpxi, Inc.		

ERP and HAAT on direct-line with reference station.

• affixed to TV6 Margin= no direct-line contour overlap.

"*"affixed to 'IN' or 'Out' values = site inside protected contour.

"<" = Contour Overlap

1 Red bold italicized print indicates a second adjacent channel interference waiver request as noted in Exhibit 12.5. Exhibit 12.5 shows a lack of population, housing and major roads within the interference area.

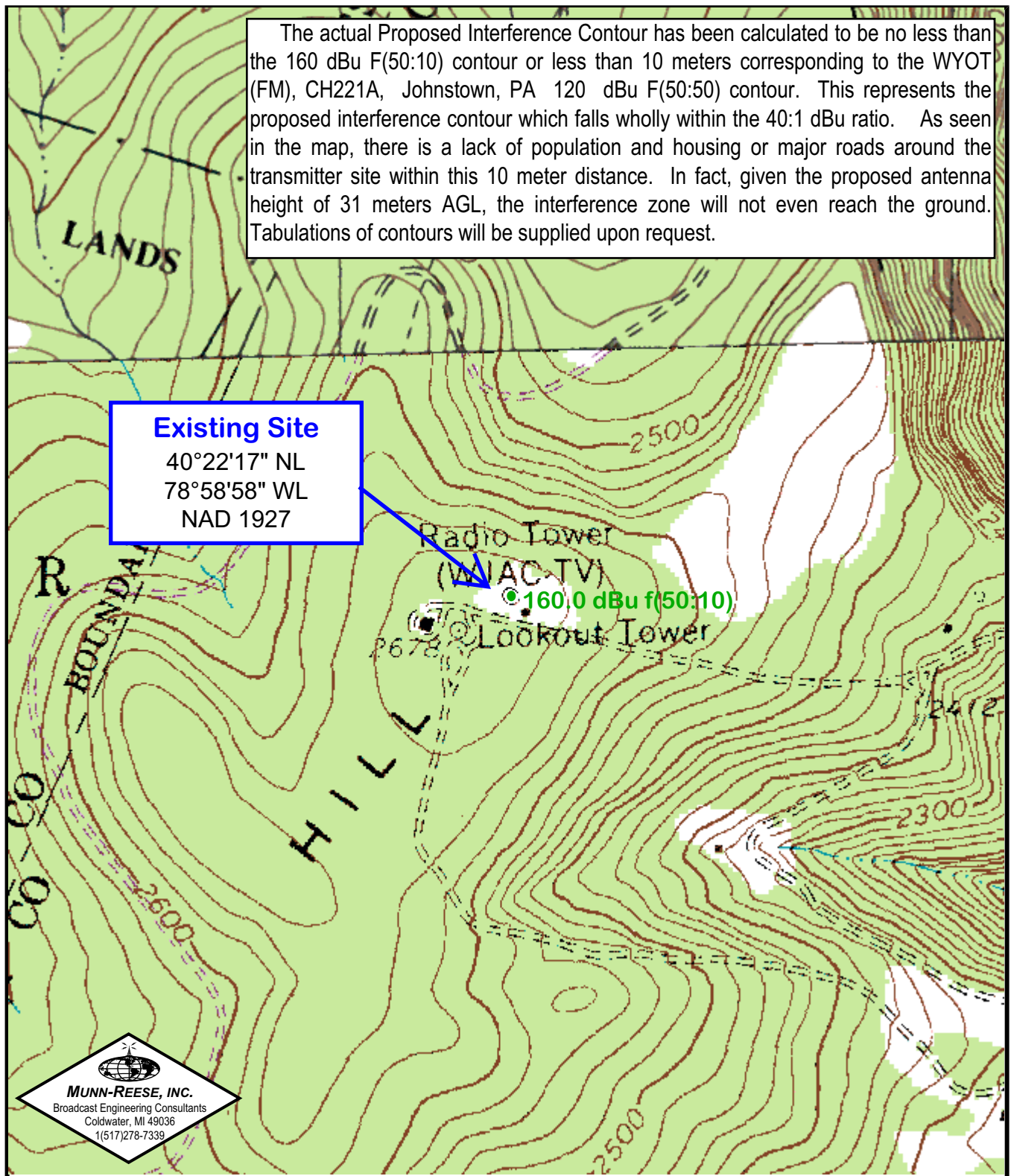
2 Blue bold italicized print denotes a TV 6 concurrence letter from WJAC-TV, Johnstown, PA as submitted in Exhibit 13.1, for continued co-location on the WJAC-TV TV6 tower.

It is believed sufficient clearance exists to precluded to the submission of additional contour protection maps, however additional showings will be supplied upon request.

MUNN-REESE, INC.
Broadcast Engineering Consultants
Coldwater, MI 49036

Exhibit 12.5 (As Amended)

2nd Adjacent Channel Interference Study with WYOT(FM) - Johnstown, PA



SCALE 1:24,000

0.0 0.1 0.2 0.3 0.4 0.5

Kilometers

CONTOUR INTERVALS: 20 FEET

JOHNSTOWN, PA

ISBN No. 0607463074

MPTPA-0403-PP01

PHOTOREVISED 1981

USGS ORDER ID TPA0403