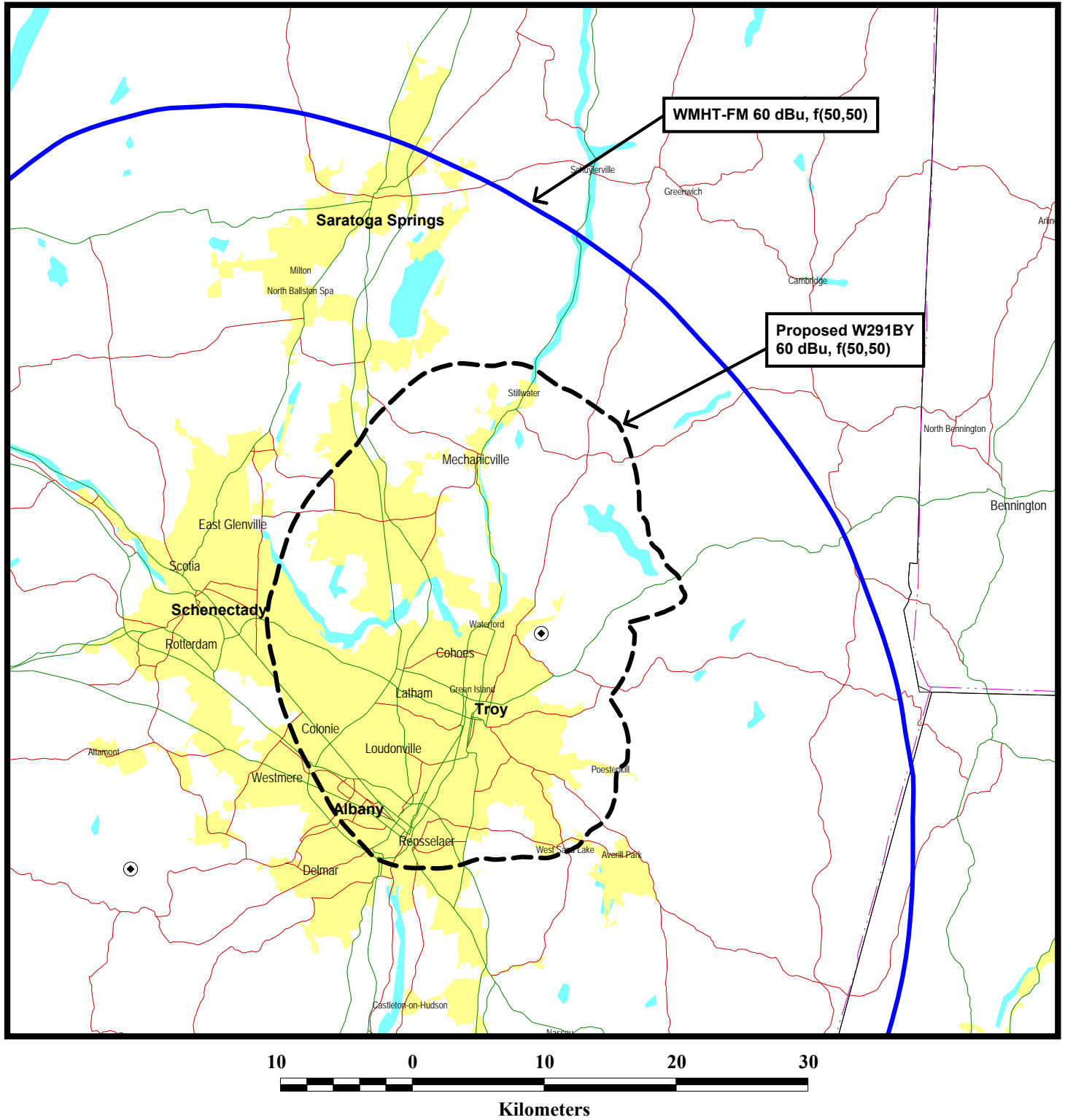


Figure 1



FM FILL-IN COMPLIANCE MAP

**FM TRANSLATOR STATION W291BY
ALBANY, NEW YORK
CH 291 (106.1 MHZ) 0.25 KW (DA)**

du Treil, Lundin & Rackley, Inc. Sarasota, Florida

FM Contour Study

du Treil, Lundin, & Rackley, Inc., Sarasota, Florida



Channel: 291 **Coordinates:** 042-47-09 073-37-43 (NAD 27) **ERP:** 0.25 kW **Max. HAAT:** 275 m **Considering Only Interference Caused**

Comment: Proposed W291BY

Callsign	Chan.	Service	Status	Freq.	City	State	Co.	Rec.	Latitude	Dist. (km)	Sep. (km)	Spac. (km)
Facility ID	ARN			Class	DA	73.215	ERP (kW)	HAAT (m)	Longitude	Bear. (deg)	Comment	
WQSH	289	FM	LIC	105.7	MALTA	NY	US	C	42-47-09	0	54.54	-54.54
6613	BLH	20061116ADM	B1	D	Y		7.1	187	073-37-43	124.27	SHORT	/1
WQSH 57.0 dBu desired distance: 53.0 km				Proposed 97.0 dBu undesired distance: 1.5 km								
W291BY	291	FX	LIC	106.1	ALBANY	NY	US	C	42-47-09	0	87.31	-87.31
139045	BMLFT	20170629AAT	D	C	N		0.25	170.3	073-37-43	124.27	SHORT	/2
W291BY 60.0 dBu desired distance: 21.6 km				Proposed 40.0 dBu undesired distance: 65.7 km								
WHDQ	291	FM	LIC	106.1	CLAREMONT	NH	US	C	43-26-15	120.04	153.66	-33.62
17798	BMLH	20120912AAU	B	N	Y		1.6	685	072-27-08	52.41	SHORT	/3
WHDQ 54.0 dBu desired distance: 70.3 km				Proposed 34.0 dBu undesired distance: 83.4 km								
W291CH	291	FX	LIC	106.1	PITTSFIELD	MA	US	C	42-24-44	50.16	75.42	-25.26
141373	BLFT	20091007ABK	D	N	N		0.01	204.4	073-17-07	145.81	SHORT	/3
W291CH 60.0 dBu desired distance: 9.7 km				Proposed 40.0 dBu undesired distance: 65.7 km								
WPYX	293	FM	LIC	106.5	ALBANY	NY	US	C	42-38-09	34.79	79.62	-44.83
73911	BMLH	20101012ADP	B	N	N		15.5	275	074-00-05	241.42	SHORT	/4
WPYX 54.0 dBu desired distance: 77.6 km				Proposed 94.0 dBu undesired distance: 2.0 km								

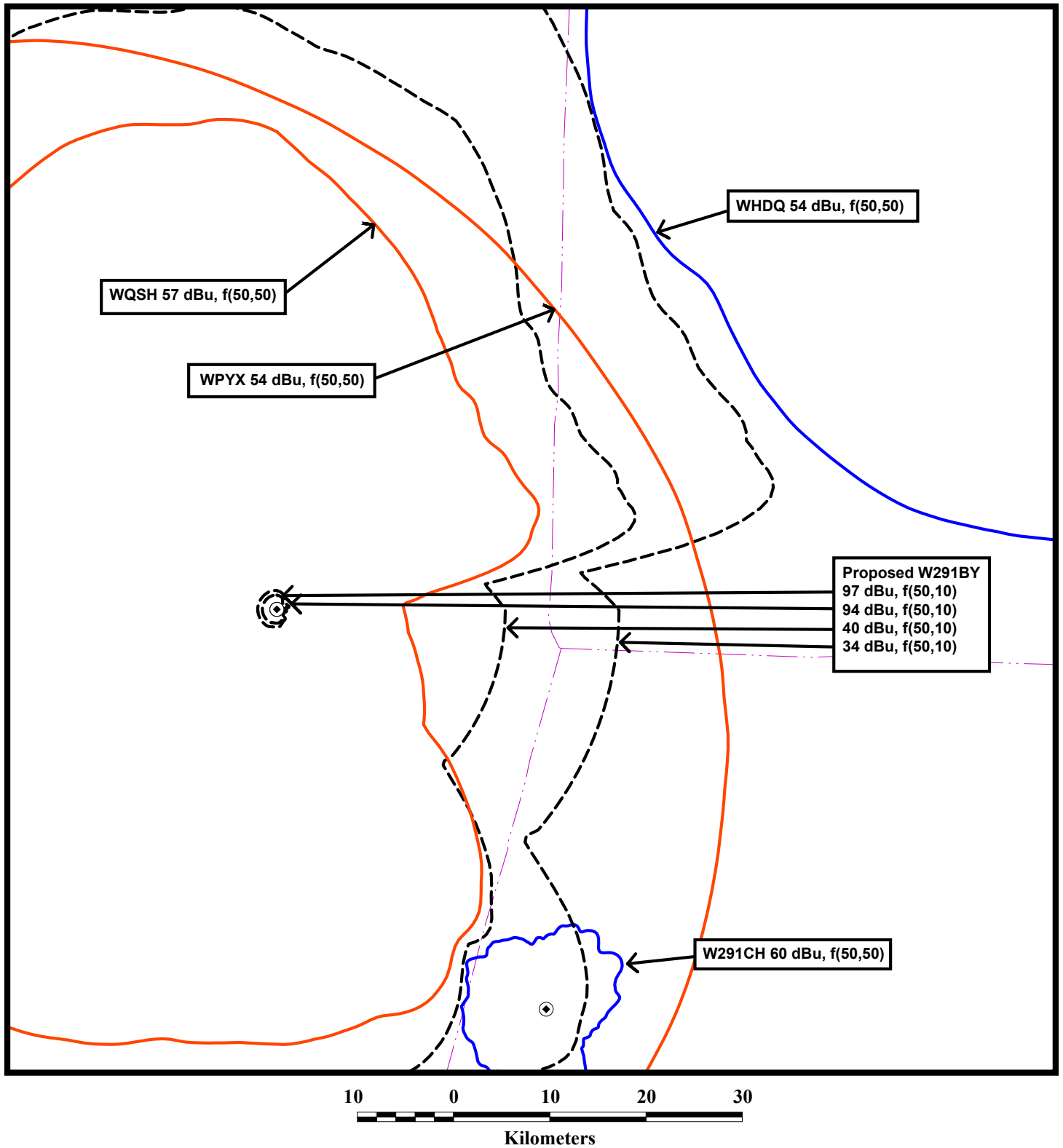
/1 There will be contour overlap normally prohibited by Section 74.1204(a). However, based on the undesired-to-desired (U/D) signal strength ratio methodology, it has been determined that no actual interference will occur due to lack of population under Section 74.1204(d). See Exhibit 17.

/2 Current W291BY license.

/3 Proposal complies with the contour overlap provisions of Section 74.1204(a).

/4 There will be contour overlap normally prohibited by Section 74.1204(a). However, based on the undesired-to-desired (U/D) signal strength ratio methodology, it has been determined that no actual interference will occur due to lack of population under Section 74.1204(d). See Exhibit 17 and Figure 4.

Figure 3

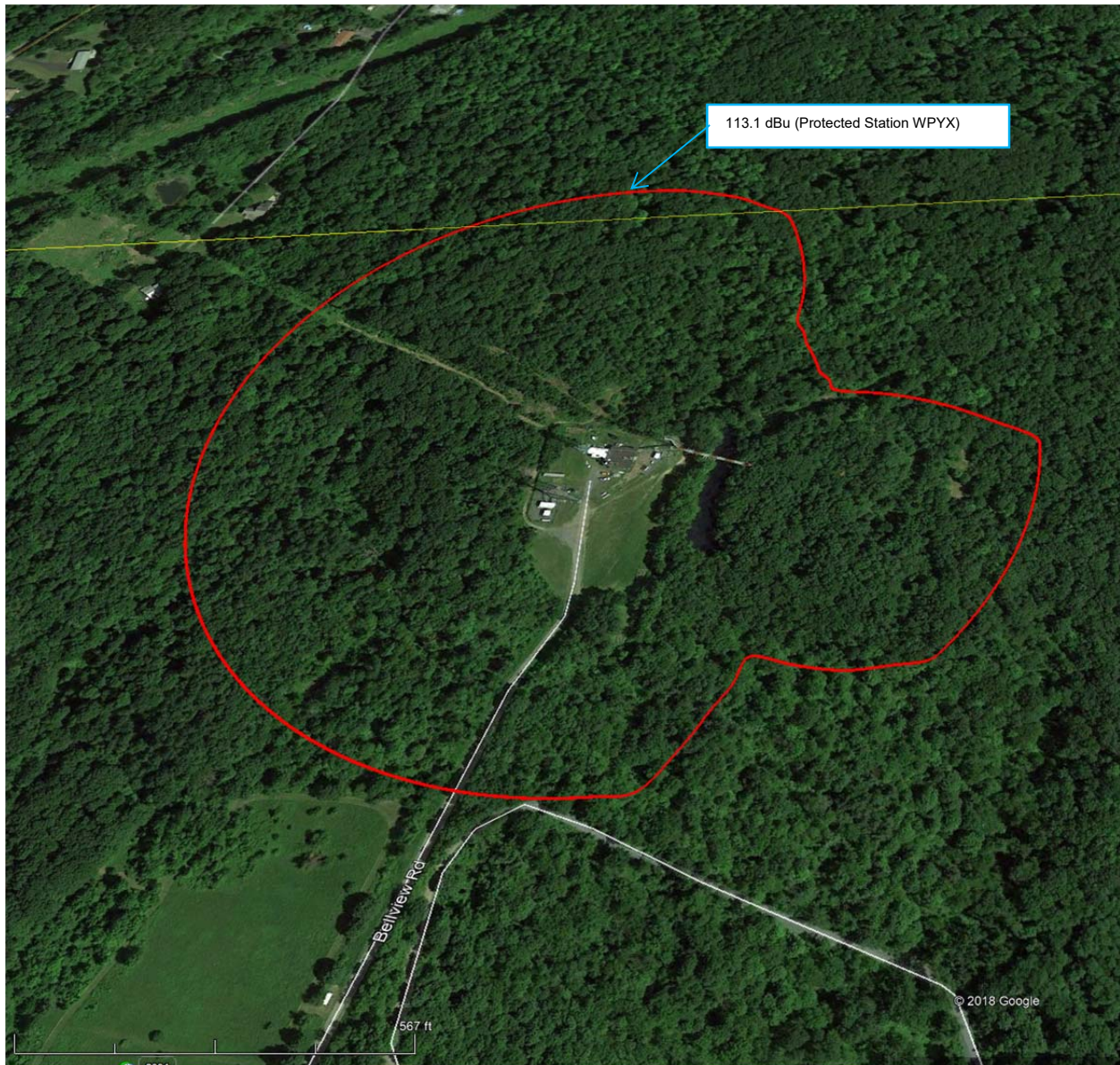


COMPLIANCE WITH SECTION 74.1204

FM TRANSLATOR STATION W291BY
ALBANY, NEW YORK
CH 291 (106.1 MHz) 0.25 KW (DA)

du Treil, Lundin & Rackley, Inc. Sarasota, Florida

Figure 4



UNDESIRE-TO-DESIRED (U/D) SIGNAL STRENGTH INTERFERENCE RATIO ANALYSIS

FM TRANSLATOR STATION W291BY

ALBANY, NEW YORK

CH 291 (106.1 MHZ) 0.25 KW (DA)

du Treil, Lundin & Rackley, Inc. Sarasota, Florida

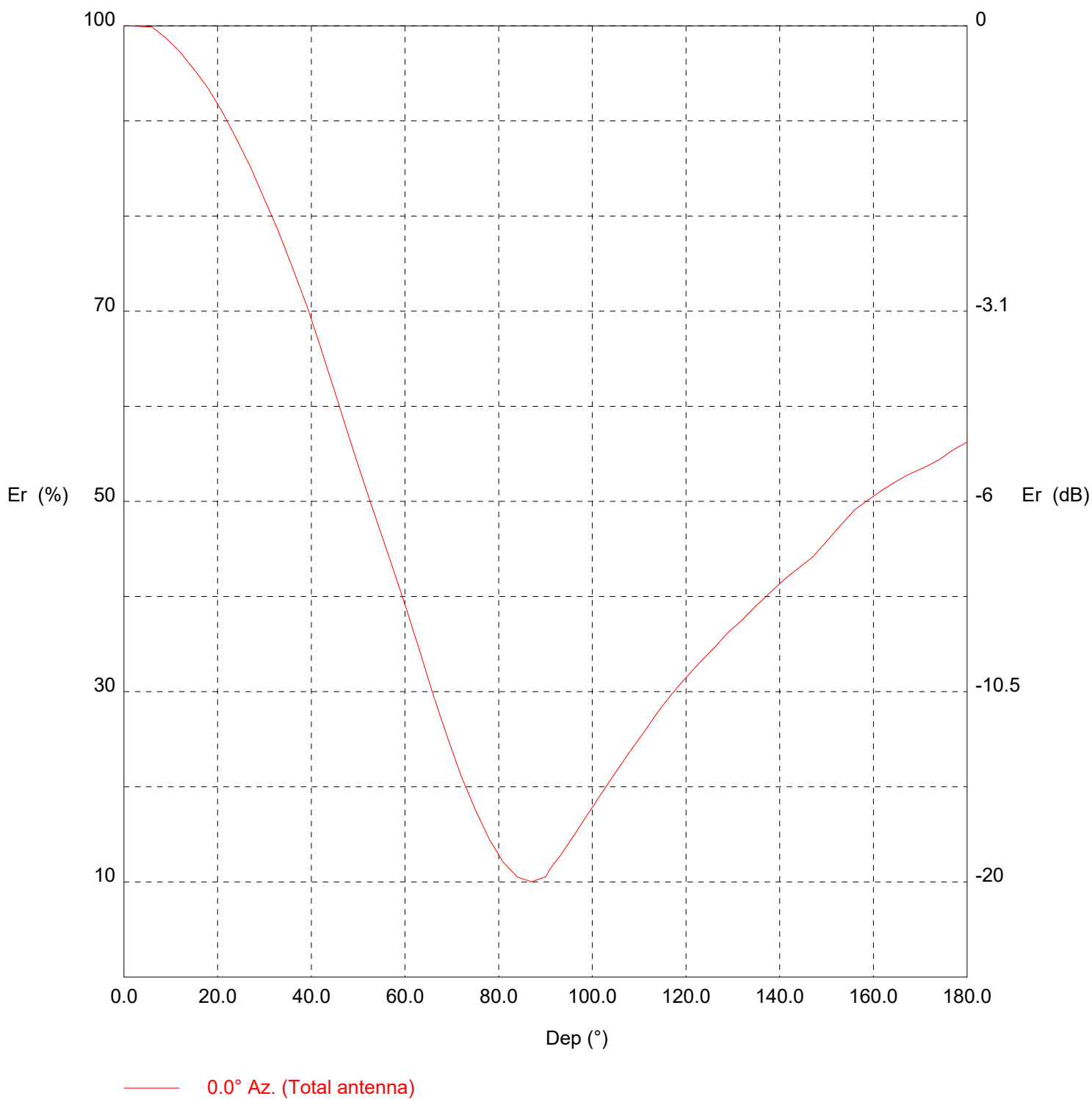
TX station:

Frequency: 100.00 MHz

Figure 5

Sheet 1 of 2

Vertical diagram



TX station:

Figure 5

Frequency: 100.00 MHz

Sheet 2 of 2

Vertical diagram at an azimuth of 0° degrees

Dep (°)	Er (%)	ERP (W)	Dep (°)	Er (%)	ERP (W)	Dep (°)	Er (%)	ERP (W)
0.0	100.0	373.6	60.0	39.1	57.2	120.0	31.5	37.0
1.0	100.0	373.5	61.0	37.6	52.8	121.0	32.0	38.3
2.0	100.0	373.4	62.0	36.1	48.6	122.0	32.6	39.6
3.0	99.9	373.3	63.0	34.5	44.6	123.0	33.1	41.0
4.0	99.9	373.1	64.0	32.9	40.5	124.0	33.6	42.2
5.0	99.9	372.9	65.0	31.3	36.6	125.0	34.1	43.5
6.0	99.9	372.8	66.0	29.7	33.0	126.0	34.6	44.7
7.0	99.5	369.9	67.0	28.2	29.8	127.0	35.2	46.2
8.0	99.1	367.0	68.0	26.8	26.8	128.0	35.7	47.6
9.0	98.7	364.1	69.0	25.3	23.9	129.0	36.2	49.1
10.0	98.2	360.5	70.0	23.9	21.3	130.0	36.7	50.3
11.0	97.7	356.9	71.0	22.5	18.9	131.0	37.1	51.5
12.0	97.2	353.3	72.0	21.1	16.6	132.0	37.6	52.7
13.0	96.6	348.9	73.0	19.9	14.8	133.0	38.1	54.1
14.0	96.0	344.5	74.0	18.8	13.2	134.0	38.6	55.6
15.0	95.4	340.1	75.0	17.6	11.6	135.0	39.1	57.0
16.0	94.7	335.4	76.0	16.6	10.2	136.0	39.5	58.4
17.0	94.1	330.8	77.0	15.5	9.0	137.0	40.0	59.7
18.0	93.4	326.1	78.0	14.5	7.8	138.0	40.4	61.1
19.0	92.6	320.4	79.0	13.7	7.0	139.0	40.9	62.5
20.0	91.8	314.7	80.0	12.9	6.2	140.0	41.4	63.9
21.0	91.0	309.1	81.0	12.0	5.4	141.0	41.8	65.3
22.0	90.0	302.7	82.0	11.5	5.0	142.0	42.2	66.5
23.0	89.1	296.5	83.0	11.0	4.5	143.0	42.6	67.8
24.0	88.1	290.3	84.0	10.5	4.1	144.0	43.0	69.0
25.0	87.2	283.8	85.0	10.3	4.0	145.0	43.4	70.3
26.0	86.2	277.4	86.0	10.2	3.9	146.0	43.8	71.6
27.0	85.2	271.1	87.0	10.0	3.7	147.0	44.1	72.8
28.0	84.0	263.9	88.0	10.2	3.9	148.0	44.7	74.7
29.0	82.9	256.8	89.0	10.4	4.0	149.0	45.3	76.5
30.0	81.8	249.8	90.0	10.5	4.1	150.0	45.8	78.4
31.0	80.6	242.9	91.0	11.4	4.8	151.0	46.4	80.3
32.0	79.5	236.1	92.0	12.0	5.4	152.0	46.9	82.3
33.0	78.3	229.3	93.0	12.7	6.0	153.0	47.5	84.3
34.0	77.1	222.0	94.0	13.4	6.7	154.0	48.0	86.2
35.0	75.8	214.7	95.0	14.1	7.4	155.0	48.6	88.2
36.0	74.5	207.6	96.0	14.8	8.2	156.0	49.1	90.2
37.0	73.2	200.4	97.0	15.6	9.1	157.0	49.5	91.5
38.0	71.9	193.3	98.0	16.4	10.0	158.0	49.8	92.8
39.0	70.6	186.3	99.0	17.1	11.0	159.0	50.2	94.1
40.0	69.1	178.6	100.0	17.9	11.9	160.0	50.5	95.4
41.0	67.6	170.9	101.0	18.6	12.9	161.0	50.9	96.8
42.0	66.1	163.5	102.0	19.3	13.9	162.0	51.2	98.1
43.0	64.6	156.0	103.0	20.1	15.0	163.0	51.5	99.2
44.0	63.1	148.7	104.0	20.8	16.2	164.0	51.8	100.4
45.0	61.6	141.6	105.0	21.5	17.3	165.0	52.1	101.6
46.0	60.0	134.4	106.0	22.3	18.5	166.0	52.4	102.7
47.0	58.4	127.5	107.0	23.0	19.7	167.0	52.7	103.7
48.0	56.8	120.7	108.0	23.7	21.0	168.0	53.0	104.8
49.0	55.3	114.4	109.0	24.4	22.2	169.0	53.2	105.7
50.0	53.8	108.2	110.0	25.1	23.5	170.0	53.4	106.5
51.0	52.3	102.2	111.0	25.7	24.8	171.0	53.6	107.4
52.0	50.8	96.6	112.0	26.5	26.2	172.0	53.9	108.4
53.0	49.4	91.1	113.0	27.2	27.6	173.0	54.1	109.4
54.0	47.9	85.8	114.0	27.9	29.0	174.0	54.4	110.5
55.0	46.5	80.7	115.0	28.5	30.4	175.0	54.7	111.9
56.0	45.0	75.7	116.0	29.2	31.8	176.0	55.1	113.3
57.0	43.6	71.0	117.0	29.8	33.1	177.0	55.4	114.7
58.0	42.1	66.2	118.0	30.4	34.4	178.0	55.7	115.9
59.0	40.6	61.6	119.0	30.9	35.7	179.0	56.0	117.0