

EXHIBIT 13

Waiver Request of Section 74.1204

K202EH Gold Beach, OR 50 Watts ERP

Minor Modification – Tower Change

Calvary Chapel of Twin Falls, Inc.

June 2016

The proposed site is contained entirely inside the service contour of second-adjacent FM Station KJKL Selma OR

KJKL

The proposed site is contained entirely inside the service contour of second-adjacent FM Station KJKL Channel 204, Class C0, 30 kW, Selma, OR. The level of least arriving protected F(50,50) signal at the proposed transmitter site is 62.0-dBu. Using the Undesired-to-Desired method for calculating proposed interference, the interfering contour with respect to KJKL is 102.0-dBu (free-space contour method employed). The interfering signal would, in the worst case at the maximum radial, extend 401 meters, or 1315 feet, from the base of the tower. This tower is located in a sparsely populated area on Wedderburn Hill. Attached is the USGS Gold Beach (OR) Quadrangle, with a 1500 foot interference contour marked in yellow. Also attached is an aerial google earth photo showing the closest residence is located at a distance of more than 2500 feet. Because there are no residences, businesses or major roads that are located within this interference contour, Calvary Chapel of Twin Falls, Inc. respectfully requests a waiver of the FM translator contour overlap regulations with respect to second-adjacent FM Station KJKL.

Calvary Chapel of Twin Falls, Inc.

Gold Beach OR K202EH Minor Tower Change

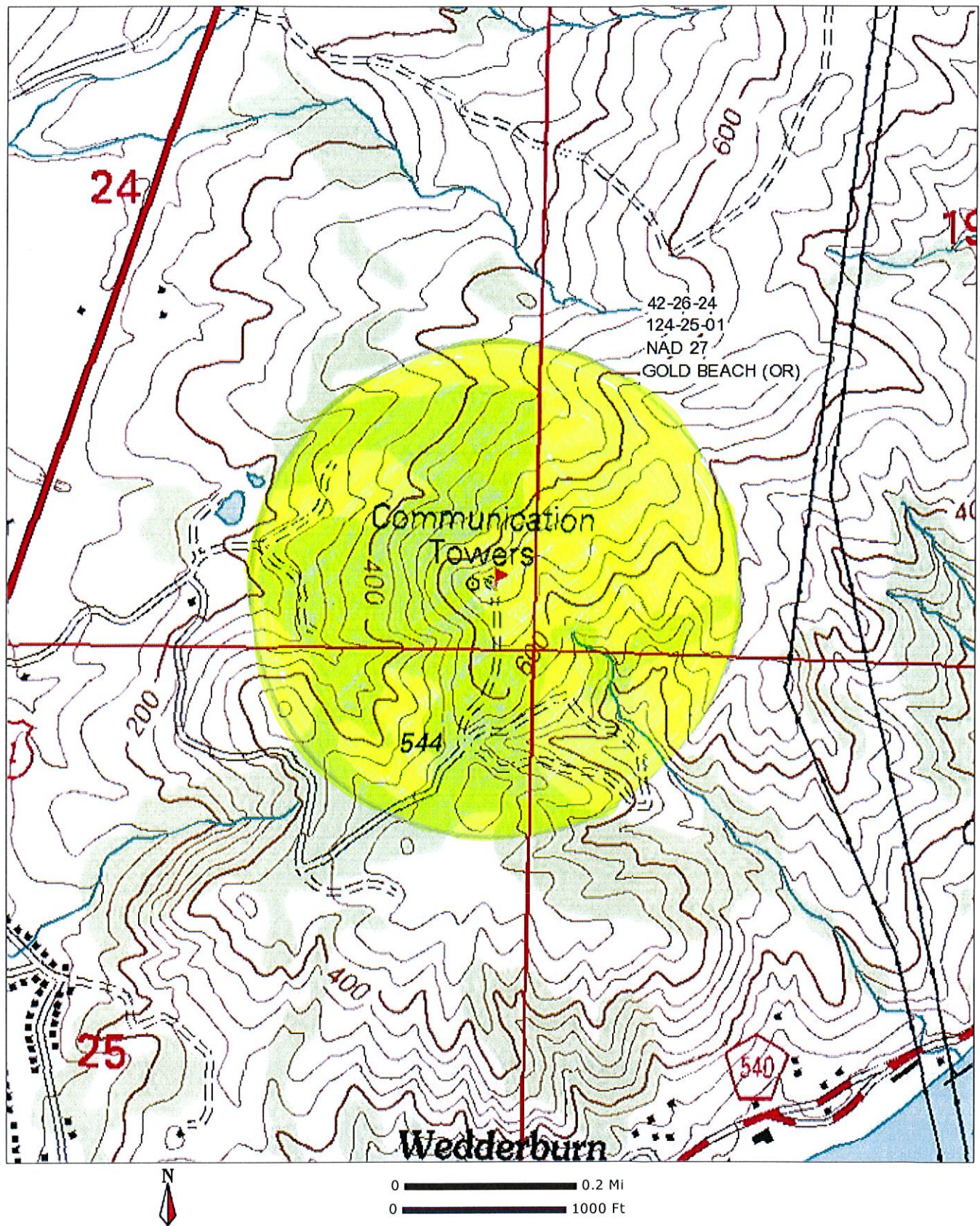
Calvary Chapel Of Twin Falls, Inc.

REFERENCE CH# 202D - 88.3 MHz, Pwr= 0.05 kW, HAAT= 94.1 M, COR= 235 M
42 26 24.0 N.
124 25 01.0 W.
Average Protected F(50-50)= 8.41 km
Omni-directional

DISPLAY DATES
DATA 06-01-16
SEARCH 06-02-16

CH CITY	CALL	TYPE STATE	ANT	AZI <--	DIST FILE #	LAT LNG	PWR(kW) HAAT(M)	INT(km) COR(M)	PRO(km) LICENSEE	*IN* (Overlap in km)	*OUT*
202D Gold Beach	K202EH	LIC _C_ OR		65.6 245.6	0.07 BLFT20130328ADO	42 26 25.0 124 24 58.0	0.050 82	43.3 225	13.0 Calvary Chapel Of Twin Fal	-49.8*	-34.9*
204CO Selma	KJKL	LIC _VX OR		107.7 288.2	65.49 BLED20061017ACU	42 15 29.0 123 39 32.0	30.000 584	8.4 1241	70.5 Educational Media Foundati	50.6	-5.5*
201D Brookings	K201DV	LIC _V_ OR		160.0 340.1	56.43 BLFT20050222ABQ	41 57 46.0 124 11 00.0	0.023 198	15.3 343	8.6 Calvary Chapel Of Twin Fal	29.8	35.7
202A Ashland	KSRG	LIC _CN OR		96.0 277.1	137.87 BLED19950508KB	42 17 52.0 122 44 58.0	0.230 410	97.2 1170	34.7 Southern Oregon University	33.2	88.0
203D Cave Junction	K203CI	LIC _VN OR		107.8 288.3	65.23 BLFT19971126TJ	42 15 31.0 123 39 43.0	0.010 560	20.1 1235	11.9 Educational Media Foundati	39.2	44.9
203A Coos Bay	KSBA	LIC _CN OR		12.4 192.6	108.24 BLED19881205KD	43 23 26.0 124 07 46.0	2.200 162	47.5 290	31.3 Southern Oregon University	48.0	58.2

Terrain database is NGDC 30 SEC , R= 73.215 qualifying spacings or FCC minimum Spacings in KM, M= Margin in KM.
In & Out distances between contours are shown at closest points. Reference zone= West Zone, Co to 3rd adjacent.
All separation margins (if shown) include rounding. Call signs with strikeout need not be protected.
Ant Column: (D= DA Standard, Z= DA 73.215, N= Not DA 73.215, _= Omni), Polarization (C,H,V,E), Beamtilt(Y,N,X)
"*"affixed to 'IN' or 'OUT' values = site inside restricted contour.





555

101

2,553.22 Feet

1319.99 Feet

Tower

1318.97 Feet

Oregon Coast Hwy

Azalea Ln

Ir's St

Hill

Google earth

© 2016 Google

545

2000 ft

