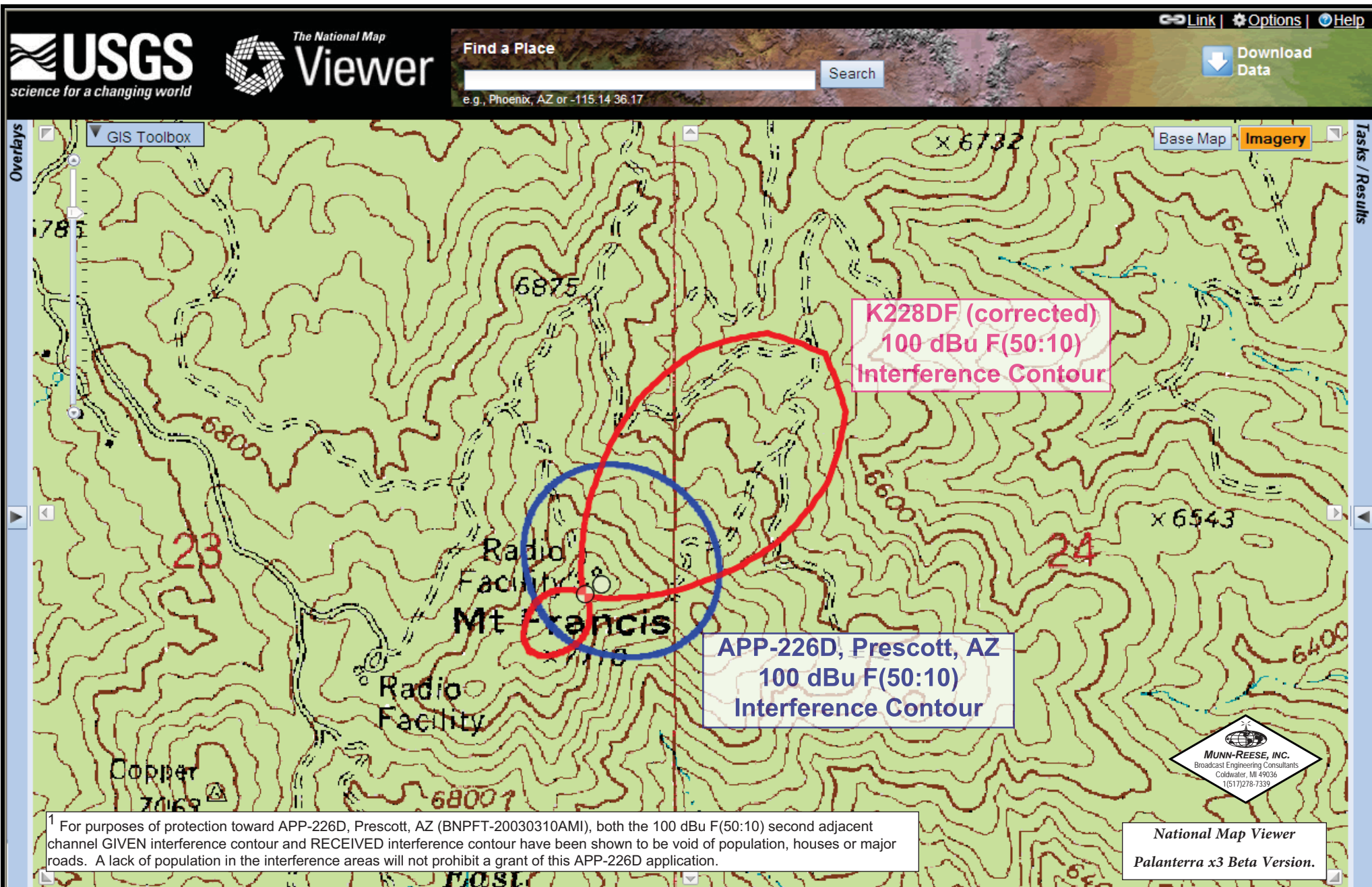


The Proposed 100 dBu F(50:10) Interference Contours have been plotted in relation to the corresponding APP-226D<sup>1</sup> and APP-225D 100 dBu F(50:50) contours. This represents the proposed interference contour which falls wholly within the worst case 40:1 dBu ratio. As seen in the map, there is a lack of population and housing or major roads around the transmitter site and within this interference area.

**Exhibit 13.1 - USGS Topographic Map of Existing Site  
& §74.1204(d) 2nd/3rd Adjacent Channel Given  
Interference Waiver Request with  
APP-226D<sup>1</sup> - Prescott, AZ & APP-225D - Congress Junction, AZ**



## Exhibit 13.2

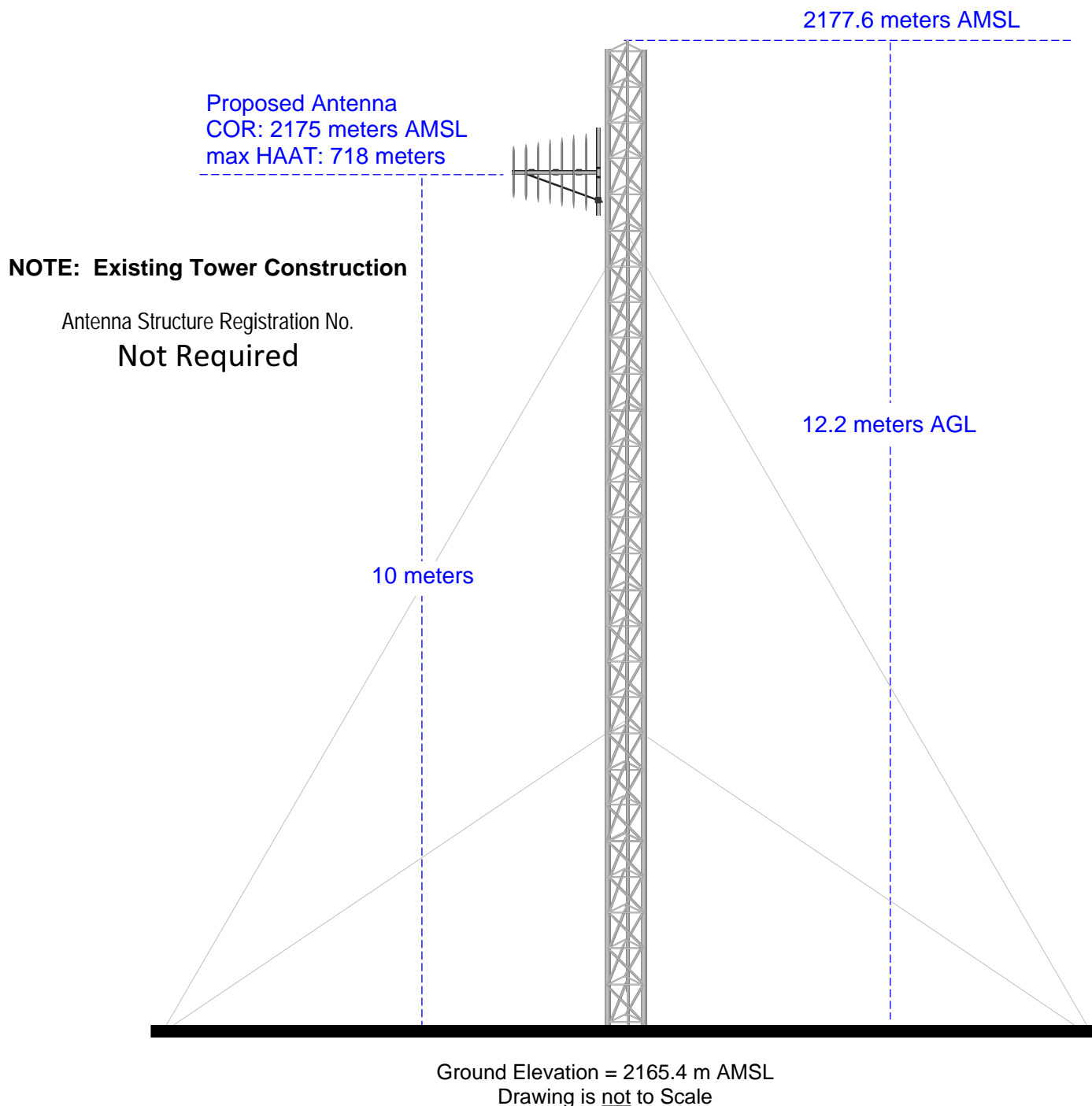
### Vertical Plan of Antenna System

The site is located on top of Mount Francis,  
the city of Prescott, Yavapai County, Arizona.

#### Site Location (NAD 27)

NL: 34° 29' 23"

WL: 112° 32' 00"



**MUNN-REESE, INC.**

Broadcast Engineering Consultants  
Coldwater, MI 49036

# Exhibit 13.3

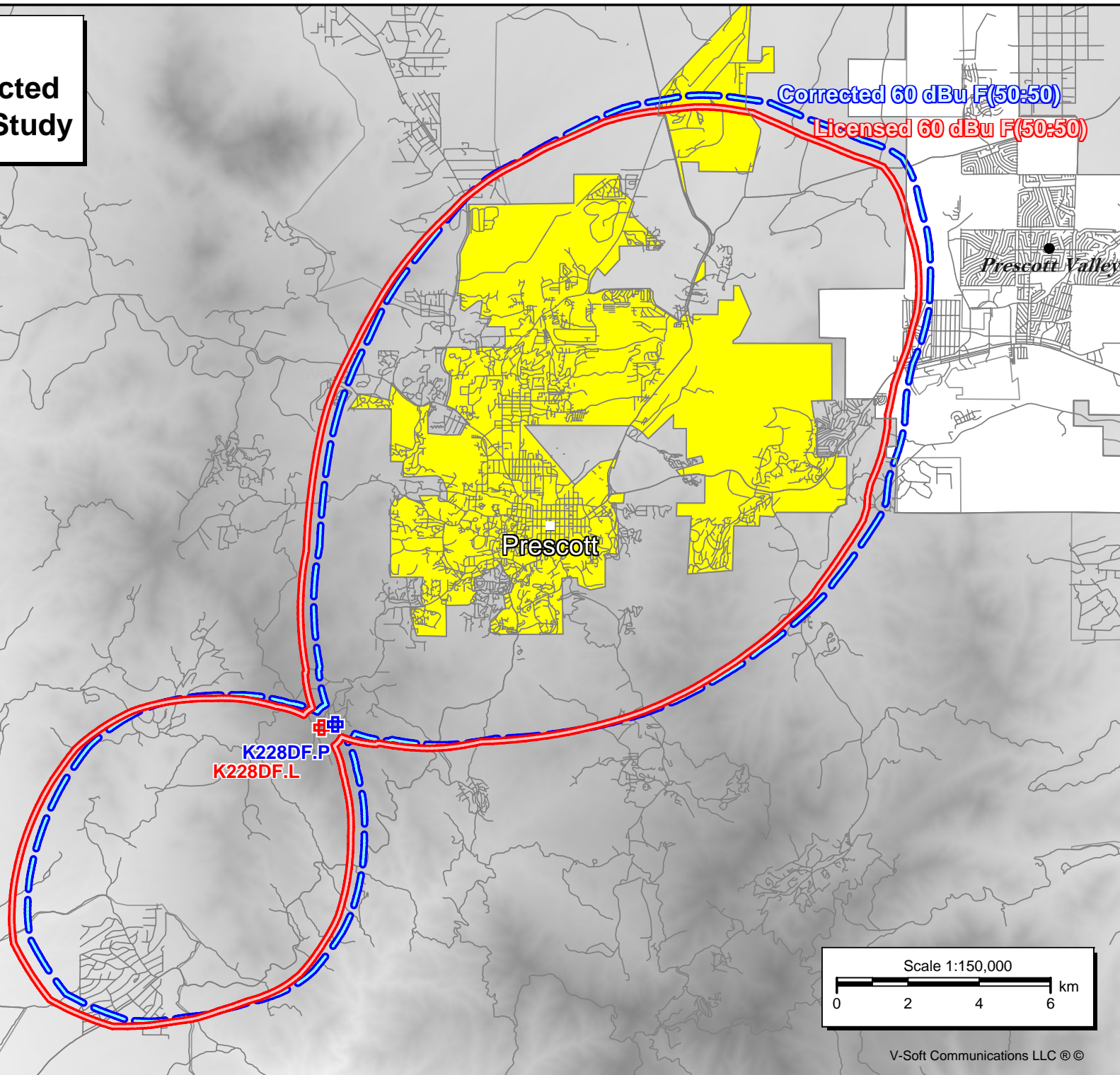
## Present vs. Corrected Service Contour Study

**K228DF.L**  
BLFT19911029TA  
Latitude: 34-29-20 N  
Longitude: 112-32-15 W  
ERP: 0.077 kW  
Channel: 228  
Frequency: 93.5 MHz  
AMSL Height: 2175.0 m  
Horiz. Pattern: Directional  
Vert. Pattern: No  
Prop Model: None

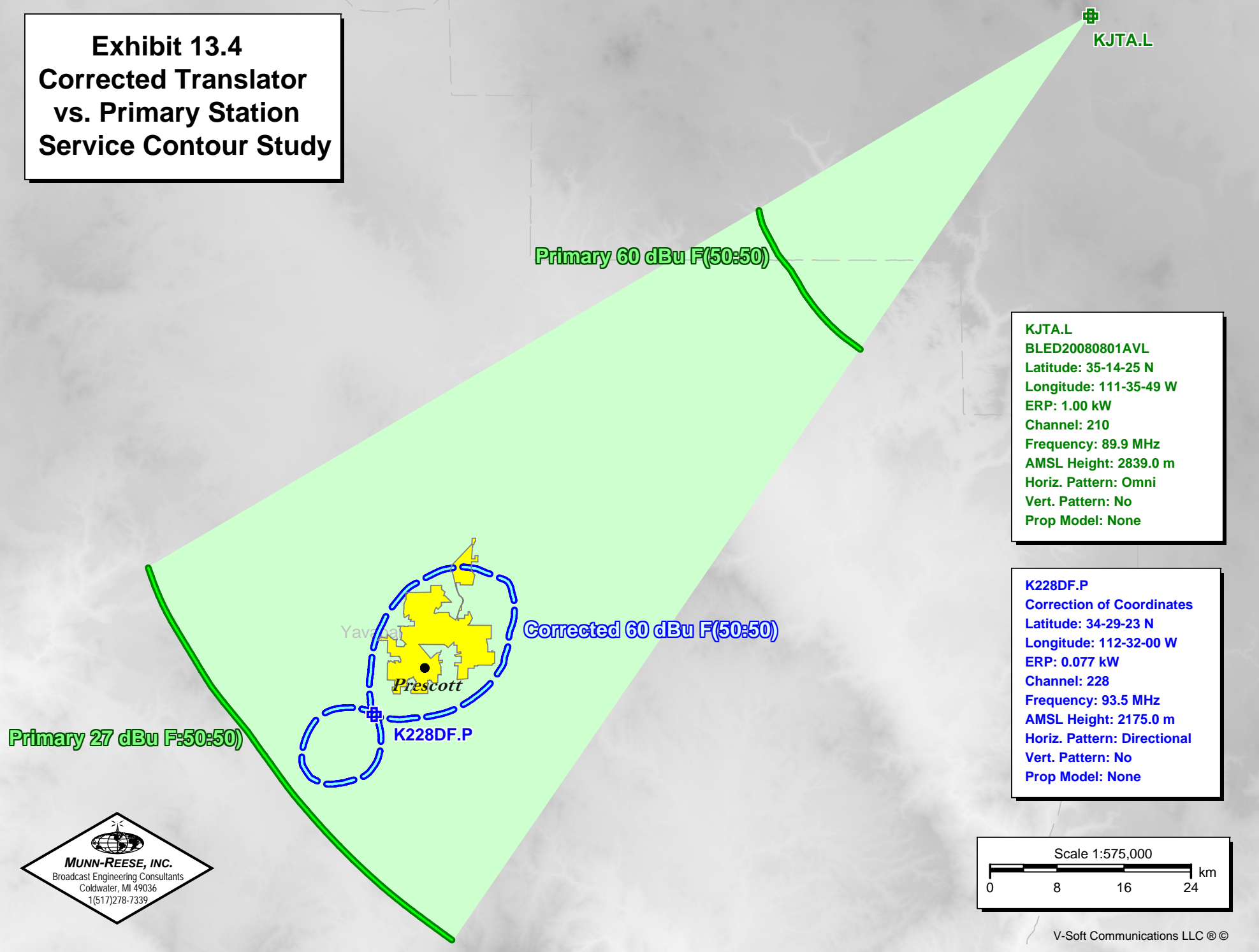
60 dBu Contour  
Total Population: 43,057  
Total Area: 306 sq. km

**K228DF.P**  
Correction of Coordinates  
Latitude: 34-29-23 N  
Longitude: 112-32-00 W  
ERP: 0.077 kW  
Channel: 228  
Frequency: 93.5 MHz  
AMSL Height: 2175.0 m  
Horiz. Pattern: Directional  
Vert. Pattern: No  
Prop Model: None

60 dBu Contour  
Total Population: 44,667  
Total Area: 310 sq. km



# Exhibit 13.4 Corrected Translator vs. Primary Station Service Contour Study





# Exhibit 13.5

## Tabulation of Proposed Allocation

Family Life Broadcasting, Inc.

REFERENCE 34 29 23.0 N. 112 32 00.0 W.		CH# 228D - 93.5 MHz, Pwr= 0.077 kW DA, HAAT= 481.8 M, COR= 2175 M Average Protected F(50-50)= 21.3 km Standard Directional						DISPLAY DATES DATA 04-17-10 SEARCH 04-22-10		
CH CITY	CALL	TYPE STATE	ANT AZI <-	DIST FILE #	LAT LNG	PWR(kW) HAAT(M)	INT(km) COR(M)	PRO(km) LICENSEE	*IN* (Overlap in km)	*OUT*
228D Prescott	K228DF	LIC DHN AZ	256.3 76.3	0.4 BLFT19911029TA	34 29 20.0 112 32 15.0	0.077 486	46.0 2175	13.7 Family Life Broadcasting,	-53.5*<	-49.3*<
TRANSLATOR FOR KFLRFM, PHOENIX, AZ.										
228C3 Paulden	AL0434	VAC AZ	357.9 177.9	42.4 RM11403	34 52 16.0 112 33 00.0	25.000 100	99.8 1527	22.7 Sierra H Broadcasting, Inc	-64.5*<	-6.4<
Proposed substitution for vacant Channel 263C3										
228C3 Caulden	R11002	ADD AZ	357.9 177.9	42.4	34 52 16.0 112 33 00.0	25.000 100	99.8 1527	22.7 Smoke & Mirrors, Llc Et. A	-64.5*<	-6.4<
Counterproposal in MB Doc. No. 05-263										
226D Prescott	629470	APP DC AZ	39.1 219.1	0.0 BNPFT20030310AMI	34 29 24.0 112 31 59.0	0.010 2175	0.1 9.1	-21.7*<	-9.7*<	
Arizona Board of Regents F										
225D Congress Junction	637362	APP CN AZ	211.6 31.4	38.8 BNPFT20030317GNQ	34 11 30.9 112 45 15.7	0.250 3078	1.1 49.8	28.0 Donald F. Hendren	-11.1*<	
227C Mesa	KDKB	LIC CY AZ	161.1 341.4	135.7 BMLH19881017KC	33 20 04.0 112 03 36.0	100.000 469	127.4 827	85.5 Mesa Radio, Inc.	5.8	45.6
229D Crown Castle	642167	APP C AZ	151.8 331.9	32.2 BNPFT20030317AAR	34 14 03.0 112 22 04.0	0.009	22.9 2339	14.3 Mary Medicus	8.2	15.8
229C3 Wickenburg	AL4516	VAC AZ	208.0 27.8	74.6 RM11272	33 53 49.0 112 54 45.0	25.000 100	53.7 856	33.3 Black Entrepreneur Associa	11.6	26.2
BEA filed a request for Pioneer Preference										
227D Cottonood	K227AP	LIC DC AZ	60.0 240.3	44.0 BLFT20070501AAN	34 41 12.0 112 07 00.0	0.010	1.3 2367	0.7 John C. Faick	24.2	15.5
230C Flagstaff	KMGN	LIC CY AZ	60.1 240.7	107.8 BMLH19940818KG	34 58 08.0 111 30 28.0	100.000 460	12.6 2626	86.7 Guyann Corporation	76.8	20.6
230C0 Flagstaff	KMGN	CP CY AZ	60.1 240.7	107.8 BPH20070502ABQ	34 58 08.0 111 30 28.0	98.000 452	12.5 2627	86.5 Guyann Corporation	76.9	20.7
One Step Application										

Terrain database is USGS 03 SEC , R= 73.215 qualifying spacings or FCC minimum Spacings in KM, M= Margin in KM  
 Contour distances are on direct line to and from reference station. Reference zone = 2, Co to 3rd adjacent.  
 Ant Column: (D= DA Standard, Z= DA 73.215, N= Not DA 73.215, \_= Omni), Polarization (C, H, V, E), Beamtilt(Y, N, X)  
 "\*"affixed to 'IN' or 'OUT' values = site inside protected contour.  
 "<" = Contour Overlap  
 Reference station has protected zone issue: Mexico

Green highlighted text denotes the K228DF - Prescott, AZ facility to be corrected by this Form 349 filing.

Blue highlighted text denotes allotment reservations or pending applications which need not be protected by FM Translator Form 349 filings.

Yellow highlighted text denotes a §74.1204(d) Second or Third Adjacent Channel Given (outgoing) Interference Waiver Request toward APP-226D, Prescott, AZ (BNPFT-20030310AMI) and APP-225D, Congress Junction, AZ (BNPFT-20030317GNQ). Full protection has been afforded both facilities as demonstrated in the **Exhibit 13.1** topographic map showing. The worst case 100 dBu F(50:10) interference contour has been shown to be void of all population, housing, buildings or major roads as noted in the attached exhibit. As a result, a grant of this correction of coordinate filing will not prohibit a grant of either pending application. Likewise as APP-226D, Prescott, AZ (BNPFT-20030310AMI) is co-located less than 100 meters from this proposed correction of coordinate filings, the Second Adjacent Channel Received (incoming) worst case 100 dBu F(50:10) interference contour has also been shown to be void of population, houses or major roads as noted in the exhibit. The existence of the received (incoming) interference will not prohibit a grant of APP-226D, Prescott, AZ (BNPFT-20030310AMI) either.