

WRRR-FM and WRRR-FM2(New) 57 dBu Coverage Map

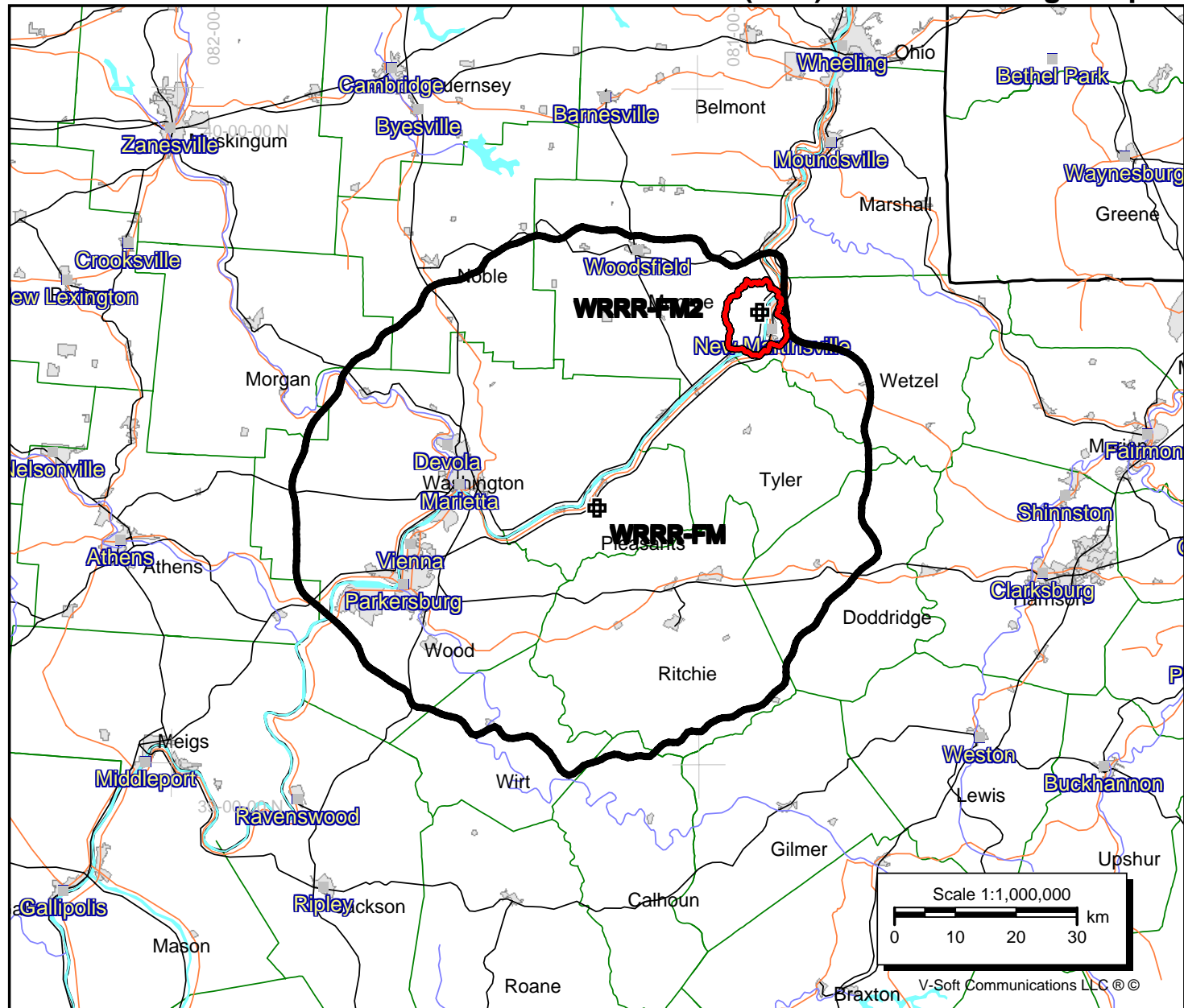
WRRR-FM

BLH20040614ABC
Latitude: 39-22-49 N
Longitude: 081-11-36 W
ERP: 17.00 kW
Channel: 230
Frequency: 93.9 MHz
AMSL Height: 389.0 m
HAAT: 119.0 m
Horiz. Pattern: Omni
Vert. Pattern: No

WRRR-FM2 (New)

Latitude: 39-40-10 N
Longitude: 080-52-55 W
ERP: 0.009 kW
Channel: 230
Frequency: 93.9 MHz
AMSL Height: 390.0 m
Elevation: 384.0 m
Horiz. Pattern: No
Vert. Pattern: Directional

5/17/2007



WRRR-FM and WRRR-FM2(New) 57 dBu Coverage Map - Close Up

WRRR-FM

BLH20040614ABC
Latitude: 39-22-49 N
Longitude: 081-11-36 W
ERP: 17.00 kW
Channel: 230
Frequency: 93.9 MHz
AMSL Height: 389.0 m
HAAT: 119.0 m
Horiz. Pattern: Omni
Vert. Pattern: No

WRRR-FM2 (New)

Latitude: 39-40-10 N
Longitude: 080-52-55 W
ERP: 0.009 kW
Channel: 230
Frequency: 93.9 MHz
AMSL Height: 390.0 m
Elevation: 384.0 m
Horiz. Pattern: No
Vert. Pattern: Directional

5/17/2007

V
Doug Vernier
721 West 1st Street, Suite A
Cedar Falls, Iowa 50613
Telecommunications Consultants

