

TECHNICAL EXHIBIT
DTV MAXIMIZATION APPLICATION
STATION WAXN-DT
KANNAPOLIS, NORTH CAROLINA
CH 50 150 KW (MAX-DA) 364 M

Technical Narrative

This Technical Exhibit supports an application for digital television (DTV) station WAXN-DT for its "maximized" DTV operation at Kannapolis, North Carolina. This application requests a construction permit (CP) for WAXN-DT digital television operation on channel 50 at Kannapolis with a directional effective radiated power of 150 kilowatts. WAXN-DT intends to use a Dielectric TFU-25ETT-R 4C160 directional transmitting antenna for digital operation.

Proposed Facilities

Station WAXN-DT proposes to operate DTV channel 50 from its licensed DTV site. The antenna height above average terrain for the channel 50 DTV operation will be 364 meters. The proposed WAXN-DT effective radiated power exceeds the Commission's *Appendix B* allocated maximum effective radiated power in some azimuthal directions for WAXN-DT.¹ Therefore, an allocation study was completed to ensure no prohibited interference would occur.

¹ See Seventh Report And Order And Eighth Further Notice Of Proposed Rule Making in the Matter of Advanced Television Systems and their Impact Upon the Existing Television Broadcast Service, MB Docket 87-268, Released August 6, 2007; Adopted August 1, 2007.

The proposed DTV transmitter site will be located atop the WAXN-TV tower. Therefore, the proposed site location is:

35° 15' 41" North Latitude

80° 43' 38" West Longitude

A sketch of antenna and pertinent elevations are included as Figure 1.

The Appendix contains the vertical and horizontal plane radiation pattern for the proposed antenna system.

Figure 2 is a map showing the proposed DTV predicted coverage contour and the associated DTV appendix B Noise-Limited coverage contour. The extent of the contours have been calculated using the normal FCC prediction method.

Population Served

The herein proposed WAXN-DT "maximized" facility is predicted to serve 2,113,001 persons, post-transition based upon the 2000 Census. WAXN-DT's associated Appendix B facility is predicted to serve 2,047,000 persons. Therefore, the herein proposed WAXN-DT facility would serve more than 100% of WAXN-DT's Appendix B population.

Allocation Considerations

The proposed WAXN-DT Channel 50 facility meets the requirements of Section 73.623 of the FCC Rules concerning predicted interference to other Appendix B DTV allotments. Longley-Rice interference analyses were conducted pursuant to the requirements of the FCC Rules; OET Bulletin No. 69; and published FCC guidelines for preparation of such interference analyses. The Longley-Rice interference analyses were conducted using the software developed by du Treil, Lundin & Rackley, Inc. based on the FCC published software routines.² Stations selected for analysis were determined pursuant to the distance requirements outlined in the FCC DTV Processing Guidelines Public Notice. The results of the interference analyses for the proposed WAXN-DT facility are summarized herein at Figure 3. As indicated therein, the proposed facility will meet the 0.5% criterion outlined in the FCC Rules and published guidelines with respect to all considered stations.³

Radiofrequency Electromagnetic Field Exposure

The proposed WAXN-DT facilities were evaluated in terms of potential radiofrequency electromagnetic field exposure at ground level to workers and the general public. The radiation center for the proposed WAXN-DT antenna is

2 The duTreil, Lundin & Rackley, Inc. DTV interference analysis program is based on the program and procedures outlined by the FCC in the Sixth Report and Order; subsequent Memorandum Opinion and Order; and FCC OET Bulletin No. 69. A nominal grid size resolution of 2 km was employed.

3 Interference analysis results reflect the net change in interference to a given station considering the interference predicted to occur from all other stations (i.e. "masking") including the allotment facility for WAXN-DT. This properly reflects the net interference change for determining compliance with the FCC 0.5% *de minimis* standard.

located 320 meters above ground level. The maximum effective radiated power is 150 kilowatts. A "worst case" downward relative field value of 0.25 is assumed for the antenna's downward radiation. The calculated power density at a point 2 meters above ground level is 0.0031 mW/cm^2 . This is less than 8 percent of the Commission's recommended limit of 0.46 mW/cm^2 for channel 50 for an "uncontrolled" environment.

Access to the transmitting site is restricted and appropriately marked with warning signs. As this is a multi-user site an agreement between the stations will control access. In the event that workers or other authorized personnel enter restricted areas or climb the tower, appropriate measures will be taken to assure worker safety with respect to radio frequency radiation exposure. Such measures include reducing the average exposure by spreading out the work over a longer period of time, wearing "accepted" RFR protective clothing and/or RFR exposure monitors or scheduling work when the stations are at reduced power or shut down. The proposed WAXN-DT operation appears to be otherwise categorically excluded from environmental processing.

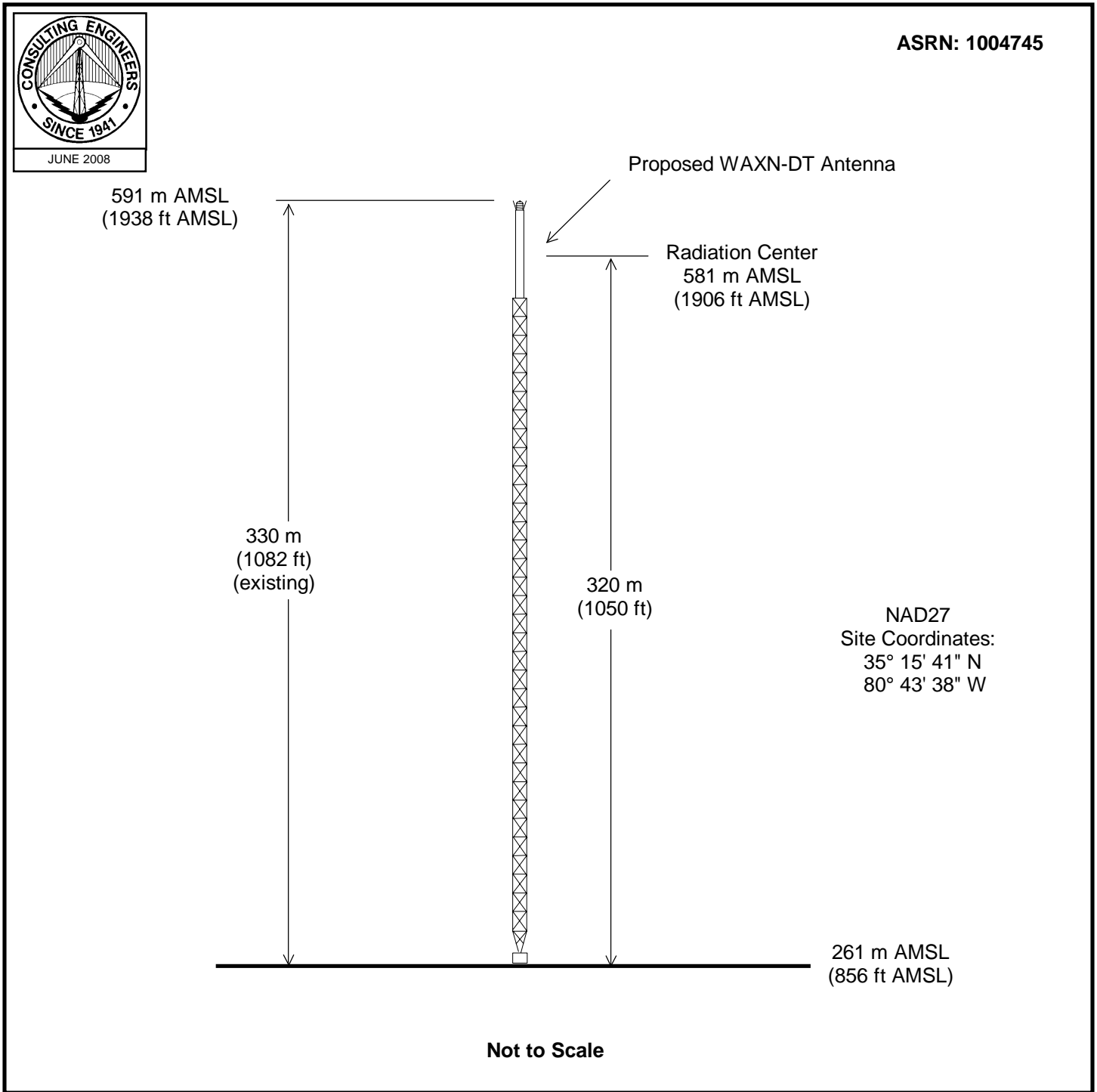
It is noted that this statement only addresses the potential for radiofrequency electromagnetic field exposure. All other aspects of the environmental processing analysis will be or already have been provided to the FCC by the tower owner.

Charles Cooper

du Treil, Lundin & Rackley, Inc.
201 Fletcher Avenue
Sarasota, Florida 32437
941.329.6000

June 13, 2008

Figure 1

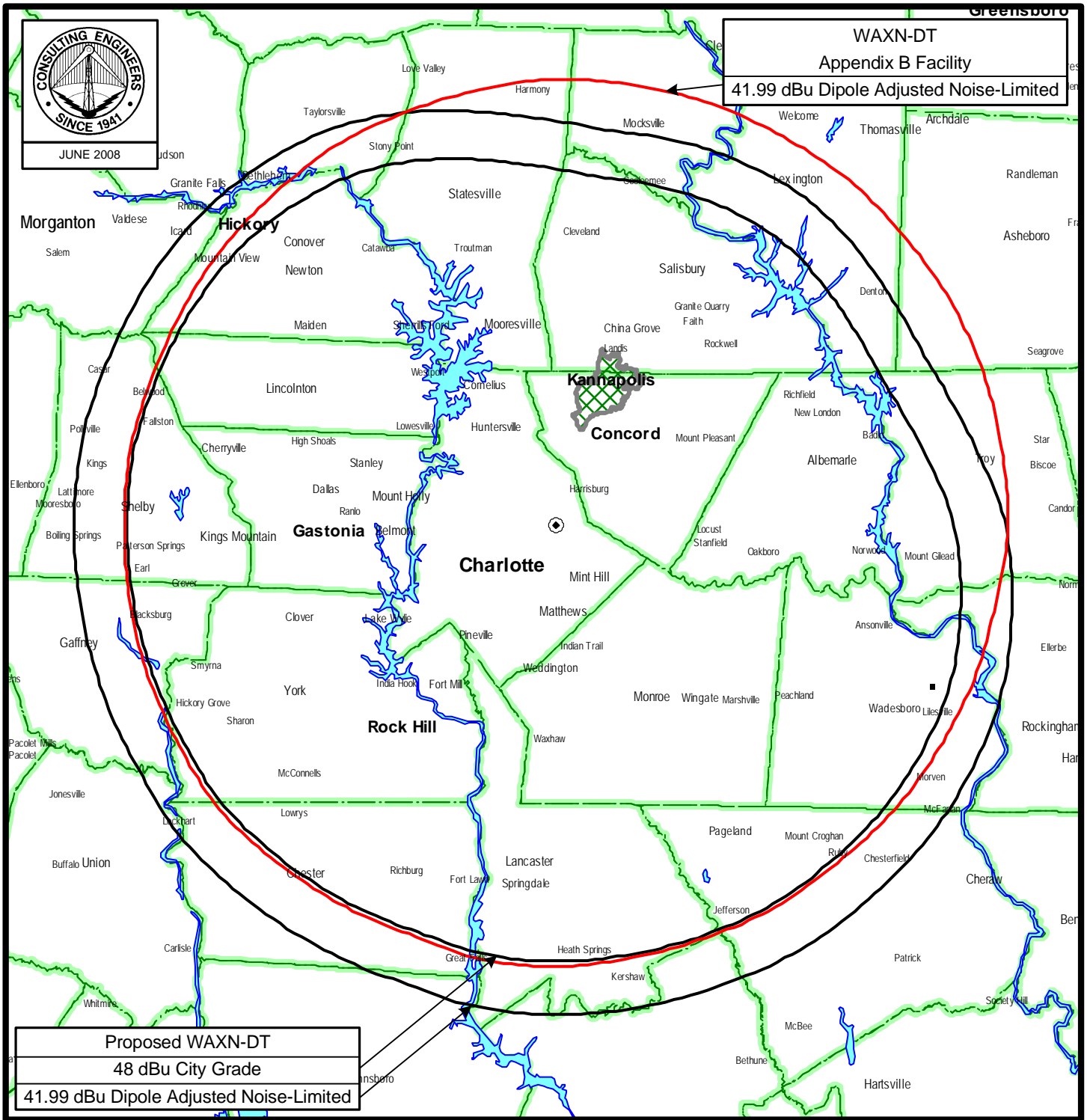


ANTENNA AND SUPPORTING STRUCTURE

DTV STATION WAXN-DT
KANNAPOLIS, NORTH CAROLINA
CH 50 150 KW (MAX-DA) 364 M

du Treil, Lundin & Rackley, Inc. Sarasota, Florida

Figure 2



PREDICTED COVERAGE CONTOURS

STATION WAXN-DT

KANNAPOLIS, NORTH CAROLINA

CH 50 150 KW (MAX-DA) 364 M

du Treil, Lundin & Rackley, Inc Sarasota, Florida

Figure 3

TW Census data selected 2000
Post Transition Data Base Selected /export/home/cdbs/pt_tvdb.sff

TV INTERFERENCE and SPACING ANALYSIS PROGRAM

Date: 06-13-2008 Time: 15:54:33

Record Selected for Analysis

WAXN-TV USERRECORD-01 KANNAPOLIS NC US
Channel 50 ERP 150. kW HAAT 377. m RCAMSL 00581 m
Latitude 035-15-41 Longitude 0080-43-38
Status APP Zone 2 Border
Dir Antenna Make usr Model WAXNMAXDA Beam tilt N Ref Azimuth 345.
Last update Cutoff date Docket
Comments
Applicant

Cell Size for Service Analysis 2.0 km/side

Distance Increments for Longley-Rice Analysis 1.00 km

Facility meets maximum height/power limits

Azimuth (Deg)	ERP (kW)	HAAT (m)	41.0 dBu F(50,90) (km)
0.0	13.500	385.2	73.0
45.0	13.681	394.8	73.7
90.0	40.249	394.7	80.9
135.0	137.090	373.1	87.8
180.0	142.448	374.8	88.2
225.0	142.009	378.0	88.4
270.0	150.000	355.4	86.9
315.0	104.584	358.2	84.5

Evaluation toward Class A Stations

No Spacing violations or contour overlap to Class A stations

Class A Evaluation Complete

Proposed facility OK to FCC Monitoring Stations

Proposed facility OK toward West Virginia quiet zone

Proposed facility OK toward Table Mountain

Figure 3

Proposed facility is beyond the Canadian coordination distance

Proposed facility is beyond the Mexican coordination distance

Proposed station is OK toward AM broadcast stations

Start of Interference Analysis

Channel	Call	City/State	ARN
50	WAXN-TV	KANNAPOLIS NC	USERRECORD01

Stations Potentially Affected by Proposed Station

Chan	Call	City/State	Dist(km)	Status	Application	Ref. No.
46	WBFT-CA	SANFORD NC	142.3	LIC	BLTTL	-19890630IK
49	WRAZ	RALEIGH NC	204.3	CP MOD	BMPCDT	-20040329AKW
49	WRAZ	RALEIGH NC	204.3	PLN	DTVPLN	-DTVPI745
49	WLFG	GRUNDY VA	212.5	CP	BPCDT	-19991029AGK
49	WLFG	GRUNDY VA	212.5	PLN	DTVPLN	-DTVPI754
50	WGS-CA	SAVANNAH GA	355.9	LIC	BLTTL	-19990413JD
50	WCBD-TV	CHARLESTON SC	274.9	CP MOD	BMPCDT	-20040419ABK
50	WCBD-TV	CHARLESTON SC	274.9	PLN	DTVPLN	-DTVPI778
50	WTLU-CA	LYNCHBURG VA	248.0	LIC	BLTTA	-20040812AAE
50	WGNT	PORTSMOUTH VA	420.2	LIC	BLCDT	-20020718AAK
50	WGNT	PORTSMOUTH VA	420.2	PLN	DTVPLN	-DTVPI780
50	WOAY-TV	OAK HILL WV	302.0	LIC	BLCDT	-20070426AAK
50	WOAY-TV	OAK HILL WV	302.0	PLN	DTVPLN	-DTVPI784
51	WFXG	AUGUSTA GA	228.9	CP MOD	BMPCDT	-20080219ATL
51	WFXG	AUGUSTA GA	228.9	PLN	DTVPLN	-DTVPI791
51	WFMY-TV	GREENSBORO NC	104.9	LIC	BLCDT	-20050628AAB
51	WFMY-TV	GREENSBORO NC	104.9	PLN	DTVPLN	-DTVPI801

Analysis of Interference to Affected Station 1

Analysis of current record

Channel	Call	City/State	Application	Ref. No.
46	WBFT-CA	SANFORD NC	BLTTL	-19890630IK

Stations Potentially Affecting This Station

Chan	Call	City/State	Dist(km)	Status	Application	Ref. No.
38	WUVC-TV	FAYETTEVILLE NC	18.6	LIC	BLCDT	-20060912ACZ
38	WUVC-TV	FAYETTEVILLE NC	18.6	PLN	DTVPLN	-DTVPI371
42	WRAY-TV	WILSON NC	101.1	LIC	BLCDT	-20060609AAX
42	WRAY-TV	WILSON NC	101.1	PLN	DTVPLN	-DTVPI509
43	WLXI-TV	GREENSBORO NC	72.2	CP MOD	BMPCDT	-20020201AAN
43	WLXI-TV	GREENSBORO NC	72.2	PLN	DTVPLN	-DTVPI545
43	WLXI-TV	GREENSBORO NC	72.2	LIC	BLCDT	-20060630ADU
44	WUNG-TV	CONCORD NC	130.2	LIC	BLEDT	-20010814ABF

Figure 3

44	WUNG-TV	CONCORD NC	130.2	PLN	DTVPLN	-DTV1584
45	WXLV-TV	WINSTON-SALEM NC	72.2	APP	BPCT	-20000728AED
46	WJZY	BELMONT NC	179.3	LIC	BLCT	-19870320KU
46	WWAY	WILMINGTON NC	175.2	LIC	BLCDT	-20051221AOQ
46	WWAY	WILMINGTON NC	175.3	PLN	DTVPLN	-DTV1651
46	WHTJ	CHARLOTTESVILLE VA	284.9	APP	BPEDT	-20080610AAP
46	WHTJ	CHARLOTTESVILLE VA	284.9	PLN	DTVPLN	-DTV1661
46	WHTJ	CHARLOTTESVILLE VA	284.9	LIC	BLEDT	-20050819ADO
46	WPXV	NORFOLK VA	281.9	LIC	BLCDT	-20020510AAI
46	WPXV	NORFOLK VA	281.9	PLN	DTVPLN	-DTV1662
46	WVVA	BLUEFIELD WV	266.4	CP MOD	BMPCDT	-20060707ABJ
46	WVVA	BLUEFIELD WV	266.4	PLN	DTVPLN	-DTV1665
47	WRPX	ROCKY MOUNT NC	112.8	LIC	BLCT	-19960709KN
48	WRAL-TV	RALEIGH NC	62.8	CP	BPCDT	-20080319AAE
48	WRAL-TV	RALEIGH NC	62.8	PLN	DTVPLN	-DTV1713
49	WRAZ	RALEIGH NC	62.8	CP MOD	BMPCDT	-20040329AKW
49	WRAZ	RALEIGH NC	62.8	PLN	DTVPLN	-DTV1745
50	WAXN-TV	KANNAPOLIS NC	142.3	LIC	BLCDT	-20020426AAN
50	WAXN-TV	KANNAPOLIS NC	142.3	PLN	DTVPLN	-DTV1769
61	WLXI-TV	GREENSBORO NC	108.6	LIC	BLCT	-19990929AAC
50	WAXN-TV	KANNAPOLIS NC	142.3	APP	USERRECORD-01	

Proposed station is beyond the site to
nearest cell evaluation distance

#####

Analysis of Interference to Affected Station 2

Analysis of current record

Channel	Call	City/State	Application Ref. No.
49	WRAZ	RALEIGH NC	BMPEDT -20040329AKW

Stations Potentially Affecting This Station

Chan	Call	City/State	Dist(km)	Status	Application Ref. No.
48	WRAL-TV	RALEIGH NC	0.0	CP	BPCDT -20080319AAE
48	WRAL-TV	RALEIGH NC	0.0	PLN	DTVPLN -DTV1713
49	WLFG	GRUNDY VA	343.2	CP	BPCDT -19991029AGK
49	WLFG	GRUNDY VA	343.2	PLN	DTVPLN -DTV1754
49	WHSV-TV	HARRISONBURG VA	325.4	LIC	BLCDT -20060413ACO
49	WHSV-TV	HARRISONBURG VA	325.4	PLN	DTVPLN -DTV1755
50	WAXN-TV	KANNAPOLIS NC	204.3	PLN	DTVPLN -DTV1769
50	WGNT	PORTSMOUTH VA	224.2	LIC	BLCDT -20020718AAK
50	WGNT	PORTSMOUTH VA	224.2	PLN	DTVPLN -DTV1780
50	WAXN-TV	KANNAPOLIS NC	204.3	APP	USERRECORD-01

Proposal causes no interference

#####

Analysis of Interference to Affected Station 3

Analysis of current record

Figure 3

Channel	Call	City/State	Application Ref. No.
49	WRAZ	RALEIGH NC	DTVPLN -DTV1745

Stations Potentially Affecting This Station

Chan	Call	City/State	Dist(km)	Status	Application Ref. No.
48	WRAL-TV	RALEIGH NC	0.0	CP	BPCDT -20080319AAE
48	WRAL-TV	RALEIGH NC	0.0	PLN	DTVPLN -DTV1713
49	WLFG	GRUNDY VA	343.2	CP	BPCDT -19991029AGK
49	WLFG	GRUNDY VA	343.2	PLN	DTVPLN -DTV1754
49	WHSV-TV	HARRISONBURG VA	325.4	LIC	BLCDT -20060413ACO
49	WHSV-TV	HARRISONBURG VA	325.4	PLN	DTVPLN -DTV1755
50	WAXN-TV	KANNAPOLIS NC	204.3	PLN	DTVPLN -DTV1769
50	WGNT	PORTSMOUTH VA	224.2	LIC	BLCDT -20020718AAK
50	WGNT	PORTSMOUTH VA	224.2	PLN	DTVPLN -DTV1780
50	WAXN-TV	KANNAPOLIS NC	204.3	APP	USERRECORD-01

Proposal causes no interference

#####

Analysis of Interference to Affected Station 4

Analysis of current record

Channel	Call	City/State	Application Ref. No.
49	WLFG	GRUNDY VA	BPCDT -19991029AGK

Stations Potentially Affecting This Station

Chan	Call	City/State	Dist(km)	Status	Application Ref. No.
48	WVLR	TAZEWELL TN	152.2	PLN	DTVPLN -DTV1720
48	WVLR	TAZEWELL TN	152.2	CP	BPCDT -20080328AFF
49	WDRB	LOUISVILLE KY	372.5	CP	BPCDT -20051130ACJ
49	WDRB	LOUISVILLE KY	372.5	PLN	DTVPLN -DTV1740
49	WRAZ	RALEIGH NC	343.2	CP MOD	BMPCDT -20040329AKW
49	WRAZ	RALEIGH NC	343.2	PLN	DTVPLN -DTV1745
49	WHSV-TV	HARRISONBURG VA	361.4	LIC	BLCDT -20060413ACO
49	WHSV-TV	HARRISONBURG VA	361.4	PLN	DTVPLN -DTV1755
49	WTAP-TV	PARKERSBURG WV	283.7	LIC	BLCDT -20040423ABG
49	WTAP-TV	PARKERSBURG WV	283.7	PLN	DTVPLN -DTV1757
50	WAXN-TV	KANNAPOLIS NC	212.5	PLN	DTVPLN -DTV1769
50	WOAY-TV	OAK HILL WV	149.8	LIC	BLCDT -20070426AAK
50	WOAY-TV	OAK HILL WV	149.8	PLN	DTVPLN -DTV1784
50	WAXN-TV	KANNAPOLIS NC	212.5	APP	USERRECORD-01

Proposal causes no interference

#####

Analysis of Interference to Affected Station 5

Analysis of current record

Channel	Call	City/State	Application Ref. No.
49	WLFG	GRUNDY VA	DTVPLN -DTV1754

Figure 3

Stations Potentially Affecting This Station

Chan	Call	City/State	Dist(km)	Status	Application Ref. No.
48	WVLR	TAZEWELL TN	152.2	PLN	DTVPLN -DTVPl720
48	WVLR	TAZEWELL TN	152.2	CP	BPCDT -20080328AFF
49	WDRB	LOUISVILLE KY	372.5	CP	BPCDT -20051130ACJ
49	WDRB	LOUISVILLE KY	372.5	PLN	DTVPLN -DTVPl740
49	WRAZ	RALEIGH NC	343.2	CP MOD	BMPCDT -20040329AKW
49	WRAZ	RALEIGH NC	343.2	PLN	DTVPLN -DTVPl745
49	WHSV-TV	HARRISONBURG VA	361.4	LIC	BLCDT -20060413ACO
49	WHSV-TV	HARRISONBURG VA	361.4	PLN	DTVPLN -DTVPl755
49	WTAP-TV	PARKERSBURG WV	283.7	LIC	BLCDT -20040423ABG
49	WTAP-TV	PARKERSBURG WV	283.7	PLN	DTVPLN -DTVPl757
50	WAXN-TV	KANNAPOLIS NC	212.5	PLN	DTVPLN -DTVPl769
50	WOAY-TV	OAK HILL WV	149.8	LIC	BLCDT -20070426AAK
50	WOAY-TV	OAK HILL WV	149.8	PLN	DTVPLN -DTVPl784
50	WAXN-TV	KANNAPOLIS NC	212.5	APP	USERRECORD-01

Proposal causes no interference

#####

Analysis of Interference to Affected Station 6

Analysis of current record

Channel	Call	City/State	Application Ref. No.
50	WGSA-CA	SAVANNAH GA	BLTTL -19990413JD

Stations Potentially Affecting This Station

Chan	Call	City/State	Dist(km)	Status	Application Ref. No.
50	WAXN-TV	KANNAPOLIS NC	355.9	LIC	BLCDT -20020426AAN
50	WAXN-TV	KANNAPOLIS NC	355.9	PLN	DTVPLN -DTVPl769
50	WCBD-TV	CHARLESTON SC	161.6	CP MOD	BMPCDT -20040419ABK
50	WCBD-TV	CHARLESTON SC	161.6	PLN	DTVPLN -DTVPl778
50	WAXN-TV	KANNAPOLIS NC	355.9	APP	USERRECORD-01

Proposed station is beyond the site to nearest cell evaluation distance

#####

Analysis of Interference to Affected Station 7

Analysis of current record

Channel	Call	City/State	Application Ref. No.
50	WCBD-TV	CHARLESTON SC	BMPCDT -20040419ABK

Stations Potentially Affecting This Station

Chan	Call	City/State	Dist(km)	Status	Application Ref. No.
50	WAXN-TV	KANNAPOLIS NC	274.9	PLN	DTVPLN -DTVPl769
51	WFXG	AUGUSTA GA	205.9	CP MOD	BMPCDT -20080219ATL
51	WFXG	AUGUSTA GA	205.9	PLN	DTVPLN -DTVPl791

Figure 3

50 WAXN-TV KANNAPOLIS NC 274.9 APP USERRECORD-01
Proposal causes no interference

#####

Analysis of Interference to Affected Station 8

Analysis of current record

Channel	Call	City/State	Application Ref. No.
50	WCBD-TV	CHARLESTON SC	DTVPLN -DTVPl778

Stations Potentially Affecting This Station

Chan	Call	City/State	Dist(km)	Status	Application Ref. No.
50	WAXN-TV	KANNAPOLIS NC	274.9	PLN	DTVPLN -DTVPl769
51	WFXG	AUGUSTA GA	205.9	CP MOD	BMPCDT -20080219ATL
51	WFXG	AUGUSTA GA	205.9	PLN	DTVPLN -DTVPl791
50	WAXN-TV	KANNAPOLIS NC	274.9	APP	USERRECORD-01

Proposal causes no interference

#####

Analysis of Interference to Affected Station 9

Analysis of current record

Channel	Call	City/State	Application Ref. No.
50	WTLU-CA	LYNCHBURG VA	BLTTA -20040812AAE

Stations Potentially Affecting This Station

Chan	Call	City/State	Dist(km)	Status	Application Ref. No.
46	WHTJ	CHARLOTTESVILLE VA	116.1	APP	BPEDT -20080610AAP
46	WHTJ	CHARLOTTESVILLE VA	116.1	PLN	DTVPLN -DTVPl661
46	WHTJ	CHARLOTTESVILLE VA	116.1	LIC	BLEDT -20050819ADO
49	W49AP	ROANOKE VA	61.7	LIC	BLTTL -19890504IE
50	WDCW	WASHINGTON DC	282.6	LIC	BLCT -20030819ABE
50	WDCW	WASHINGTON DC	282.6	PLN	DTVPLN -DTVPl762
50	WDCW	WASHINGTON DC	282.6	APP	BPCDT -20080229ACH
50	960723KX	ASHLAND KY	368.5	APP	BPCT -19960723KX
50	WAXN-TV	KANNAPOLIS NC	248.0	LIC	BLCDT -20020426AAN
50	WAXN-TV	KANNAPOLIS NC	248.0	PLN	DTVPLN -DTVPl769
50	WRAZ	RALEIGH NC	184.1	LIC	BLCT -19950925KE
50	WPCB-TV	GREENSBURG PA	357.1	LIC	BLCDT -20030409ABC
50	WPCB-TV	GREENSBURG PA	357.1	PLN	DTVPLN -DTVPl776
50	W5OCM	CHARLOTTESVILLE VA	116.1	LIC	BLTT -20031106AJK
50	WGNT	PORTSMOUTH VA	260.0	LIC	BLCDT -20020718AAK
50	WGNT	PORTSMOUTH VA	260.0	PLN	DTVPLN -DTVPl780
50	W50BD	MOOREFIELD WV	202.2	LIC	BLTT -19890920IL
50	WOAY-TV	OAK HILL WV	179.6	LIC	BLCDT -20070426AAK
50	WOAY-TV	OAK HILL WV	179.6	PLN	DTVPLN -DTVPl784
51	WVPT	STAUNTON VA	107.6	LIC	BLCT -222
50	WAXN-TV	KANNAPOLIS NC	248.0	APP	USERRECORD-01

Proposal causes no interference

Figure 3

#####

Analysis of Interference to Affected Station 10

Analysis of current record

Channel	Call	City/State	Application Ref. No.
50	WGNT	PORTSMOUTH VA	BLCDDT -20020718AAK

Stations Potentially Affecting This Station

Chan	Call	City/State	Dist(km)	Status	Application Ref. No.
49	WRAZ	RALEIGH NC	224.2	CP MOD	BMPDDT -20040329AKW
49	WRAZ	RALEIGH NC	224.2	PLN	DTVPLN -DTVP1745
50	WDCW	WASHINGTON DC	244.1	PLN	DTVPLN -DTVP1762
50	WDCW	WASHINGTON DC	244.1	APP	BPCDDT -20080229ACH
50	WAXN-TV	KANNAPOLIS NC	420.2	PLN	DTVPLN -DTVP1769
51	WEPX	GREENVILLE NC	178.7	CP	BPCDDT -20080317ABS
51	WEPX	GREENVILLE NC	178.7	PLN	DTVPLN -DTVP1802
50	WAXN-TV	KANNAPOLIS NC	420.2	APP	USERRECORD-01

Proposal causes no interference

#####

Analysis of Interference to Affected Station 11

Analysis of current record

Channel	Call	City/State	Application Ref. No.
50	WGNT	PORTSMOUTH VA	DTVPLN -DTVP1780

Stations Potentially Affecting This Station

Chan	Call	City/State	Dist(km)	Status	Application Ref. No.
49	WRAZ	RALEIGH NC	224.2	CP MOD	BMPDDT -20040329AKW
49	WRAZ	RALEIGH NC	224.2	PLN	DTVPLN -DTVP1745
50	WDCW	WASHINGTON DC	244.1	PLN	DTVPLN -DTVP1762
50	WDCW	WASHINGTON DC	244.1	APP	BPCDDT -20080229ACH
50	WAXN-TV	KANNAPOLIS NC	420.2	PLN	DTVPLN -DTVP1769
51	WEPX	GREENVILLE NC	178.7	CP	BPCDDT -20080317ABS
51	WEPX	GREENVILLE NC	178.7	PLN	DTVPLN -DTVP1802
50	WAXN-TV	KANNAPOLIS NC	420.2	APP	USERRECORD-01

Proposal causes no interference

#####

Analysis of Interference to Affected Station 12

Analysis of current record

Channel	Call	City/State	Application Ref. No.
50	WOAY-TV	OAK HILL WV	BLCDDT -20070426AAK

Figure 3

Stations Potentially Affecting This Station

Chan	Call	City/State	Dist(km)	Status	Application Ref. No.
49	WLFG	GRUNDY VA	149.8	CP	BPCDDT -19991029AGK
49	WLFG	GRUNDY VA	149.8	PLN	DTVPLN -DTVP1754
49	WTAP-TV	PARKERSBURG WV	158.9	LIC	BLCDDT -20040423ABG
49	WTAP-TV	PARKERSBURG WV	158.9	PLN	DTVPLN -DTVP1757
50	WDCW	WASHINGTON DC	375.9	PLN	DTVPLN -DTVP1762
50	WDCW	WASHINGTON DC	375.9	APP	BPCDDT -20080229ACH
50	WAXN-TV	KANNAPOLIS NC	302.0	PLN	DTVPLN -DTVP1769
50	WEAO	AKRON OH	349.9	LIC	BLEDT -20040928AQT
50	WEAO	AKRON OH	349.9	PLN	DTVPLN -DTVP1772
50	WDTN	DAYTON OH	332.5	LIC	BLCDDT -20050629AAL
50	WDTN	DAYTON OH	332.5	PLN	DTVPLN -DTVP1773
50	WPCB-TV	GREENSBURG PA	295.3	LIC	BLCDDT -20030409ABC
50	WPCB-TV	GREENSBURG PA	295.3	PLN	DTVPLN -DTVP1776
50	WAXN-TV	KANNAPOLIS NC	302.0	APP	USERRECORD-01

Proposal causes no interference

#####

Analysis of Interference to Affected Station 13

Analysis of current record

Channel	Call	City/State	Application Ref. No.
50	WOAY-TV	OAK HILL WV	DTVPLN -DTVP1784

Stations Potentially Affecting This Station

Chan	Call	City/State	Dist(km)	Status	Application Ref. No.
49	WLFG	GRUNDY VA	149.8	CP	BPCDDT -19991029AGK
49	WLFG	GRUNDY VA	149.8	PLN	DTVPLN -DTVP1754
49	WTAP-TV	PARKERSBURG WV	158.9	LIC	BLCDDT -20040423ABG
49	WTAP-TV	PARKERSBURG WV	158.9	PLN	DTVPLN -DTVP1757
50	WDCW	WASHINGTON DC	375.9	PLN	DTVPLN -DTVP1762
50	WDCW	WASHINGTON DC	375.9	APP	BPCDDT -20080229ACH
50	WAXN-TV	KANNAPOLIS NC	302.0	PLN	DTVPLN -DTVP1769
50	WEAO	AKRON OH	349.9	LIC	BLEDT -20040928AQT
50	WEAO	AKRON OH	349.9	PLN	DTVPLN -DTVP1772
50	WDTN	DAYTON OH	332.5	LIC	BLCDDT -20050629AAL
50	WDTN	DAYTON OH	332.5	PLN	DTVPLN -DTVP1773
50	WPCB-TV	GREENSBURG PA	295.3	LIC	BLCDDT -20030409ABC
50	WPCB-TV	GREENSBURG PA	295.3	PLN	DTVPLN -DTVP1776
50	WAXN-TV	KANNAPOLIS NC	302.0	APP	USERRECORD-01

Proposal causes no interference

#####

Analysis of Interference to Affected Station 14

Analysis of current record

Channel	Call	City/State	Application Ref. No.
51	WFXG	AUGUSTA GA	BMPDDT -20080219ATL

Figure 3

Stations Potentially Affecting This Station

Chan	Call	City/State	Dist(km)	Status	Application Ref. No.
50	WAXN-TV	KANNAPOLIS NC	228.9	PLN	DTVPLN -DTV1769
50	WCBD-TV	CHARLESTON SC	205.9	CP MOD	BMPCDT -20040419ABK
50	WCBD-TV	CHARLESTON SC	205.9	PLN	DTVPLN -DTV1778
51	WSST-TV	CORDELE GA	250.3	CP MOD	BMPCDT -20000501ABJ
51	WSST-TV	CORDELE GA	250.3	PLN	DTVPLN -DTV1792
51	WPXA	ROME GA	278.1	LIC	BLCDDT -20020510AAN
51	WPXA	ROME GA	278.1	PLN	DTVPLN -DTV1793
51	WAGV	HARLAN KY	401.3	LIC	BLCDDT -20061012AAS
51	WAGV	HARLAN KY	401.3	PLN	DTVPLN -DTV1797
51	WFMY-TV	GREENSBORO NC	328.1	LIC	BLCDDT -20050628AAB
51	WFMY-TV	GREENSBORO NC	328.1	PLN	DTVPLN -DTV1801
50	WAXN-TV	KANNAPOLIS NC	228.9	APP	USERRECORD-01

Proposed station is beyond the site to
nearest cell evaluation distance

#####

Analysis of Interference to Affected Station 15

Analysis of current record

Channel	Call	City/State	Application Ref. No.
51	WFXG	AUGUSTA GA	DTVPLN -DTV1791

Stations Potentially Affecting This Station

Chan	Call	City/State	Dist(km)	Status	Application Ref. No.
50	WAXN-TV	KANNAPOLIS NC	228.9	PLN	DTVPLN -DTV1769
50	WCBD-TV	CHARLESTON SC	205.9	CP MOD	BMPCDT -20040419ABK
50	WCBD-TV	CHARLESTON SC	205.9	PLN	DTVPLN -DTV1778
51	WSST-TV	CORDELE GA	250.3	CP MOD	BMPCDT -20000501ABJ
51	WSST-TV	CORDELE GA	250.3	PLN	DTVPLN -DTV1792
51	WPXA	ROME GA	278.1	LIC	BLCDDT -20020510AAN
51	WPXA	ROME GA	278.1	PLN	DTVPLN -DTV1793
51	WAGV	HARLAN KY	401.3	LIC	BLCDDT -20061012AAS
51	WAGV	HARLAN KY	401.3	PLN	DTVPLN -DTV1797
51	WFMY-TV	GREENSBORO NC	328.1	LIC	BLCDDT -20050628AAB
51	WFMY-TV	GREENSBORO NC	328.1	PLN	DTVPLN -DTV1801
50	WAXN-TV	KANNAPOLIS NC	228.9	APP	USERRECORD-01

Proposed station is beyond the site to
nearest cell evaluation distance

#####

Analysis of Interference to Affected Station 16

Analysis of current record

Channel	Call	City/State	Application Ref. No.
---------	------	------------	----------------------

Figure 3

51 WFMY-TV GREENSBORO NC BLCDDT -20050628AAB

Stations Potentially Affecting This Station

Chan	Call	City/State	Dist(km)	Status	Application Ref. No.
50	WAXN-TV	KANNAPOLIS NC	104.9	PLN	DTVPLN -DTV1769
51	WFXG	AUGUSTA GA	328.1	CP MOD	BMPCDT -20080219ATL
51	WFXG	AUGUSTA GA	328.1	PLN	DTVPLN -DTV1791
51	WAGV	HARLAN KY	333.1	LIC	BLCDDT -20061012AAS
51	WAGV	HARLAN KY	333.1	PLN	DTVPLN -DTV1797
51	WEPX	GREENVILLE NC	224.8	CP	BPCDDT -20080317ABS
51	WEPX	GREENVILLE NC	224.8	PLN	DTVPLN -DTV1802
50	WAXN-TV	KANNAPOLIS NC	104.9	APP	USERRECORD-01

Total scenarios = 8

Result key: 1
Scenario 1 Affected station 16
Before Analysis

Results for: 51A NC GREENSBORO BLCDDT 20050628AAB LIC
HAAT 569.0 m, ATV ERP 1000.0 kW

	POPULATION	AREA (sq km)
within Noise Limited Contour	4034119	42672.1
not affected by terrain losses	4012781	41820.4
lost to NTSC IX	0	0.0
lost to additional IX by ATV	234194	562.4
lost to ATV IX only	234194	562.4
lost to all IX	234194	562.4

Potential Interfering Stations Included in above Scenario 1

51A GA AUGUSTA	BMPCDT	20080219ATL	CP
51A KY HARLAN	BLCDDT	20061012AAS	LIC
51A NC GREENVILLE	BPCDDT	20080317ABS	CP
50A NC KANNAPOLIS	DTVPLN	DTV1769	PLN

After Analysis

Results for: 51A NC GREENSBORO BLCDDT 20050628AAB LIC
HAAT 569.0 m, ATV ERP 1000.0 kW

	POPULATION	AREA (sq km)
within Noise Limited Contour	4034119	42672.1
not affected by terrain losses	4012781	41820.4
lost to NTSC IX	0	0.0
lost to additional IX by ATV	252937	650.8
lost to ATV IX only	252937	650.8
lost to all IX	252937	650.8

Potential Interfering Stations Included in above Scenario 1

51A GA AUGUSTA	BMPCDT	20080219ATL	CP
51A KY HARLAN	BLCDDT	20061012AAS	LIC
51A NC GREENVILLE	BPCDDT	20080317ABS	CP
50A NC KANNAPOLIS	USERRECORD01		APP

Figure 3

Percent new IX = 0.4960%

Result key: 2
Scenario 2 Affected station 16
Before Analysis

Results for: 51A NC GREENSBORO BLCDT 20050628AAB LIC
HAAT 569.0 m, ATV ERP 1000.0 kW

	POPULATION	AREA (sq km)
within Noise Limited Contour	4034119	42672.1
not affected by terrain losses	4012781	41820.4
lost to NTSC IX	0	0.0
lost to additional IX by ATV	235653	530.3
lost to ATV IX only	235653	530.3
lost to all IX	235653	530.3

Potential Interfering Stations Included in above Scenario 2

51A GA AUGUSTA	BMPCDT	20080219ATL	CP
51A KY HARLAN	BLCDT	20061012AAS	LIC
51A NC GREENVILLE	DTVPLN	DTVP1802	PLN
50A NC KANNAPOLIS	DTVPLN	DTVP1769	PLN

After Analysis

Results for: 51A NC GREENSBORO BLCDT 20050628AAB LIC
HAAT 569.0 m, ATV ERP 1000.0 kW

	POPULATION	AREA (sq km)
within Noise Limited Contour	4034119	42672.1
not affected by terrain losses	4012781	41820.4
lost to NTSC IX	0	0.0
lost to additional IX by ATV	254396	618.7
lost to ATV IX only	254396	618.7
lost to all IX	254396	618.7

Potential Interfering Stations Included in above Scenario 2

51A GA AUGUSTA	BMPCDT	20080219ATL	CP
51A KY HARLAN	BLCDT	20061012AAS	LIC
51A NC GREENVILLE	DTVPLN	DTVP1802	PLN
50A NC KANNAPOLIS	USERRECORD01		APP

Percent new IX = 0.4962%

Result key: 3
Scenario 3 Affected station 16
Before Analysis

Results for: 51A NC GREENSBORO BLCDT 20050628AAB LIC
HAAT 569.0 m, ATV ERP 1000.0 kW

	POPULATION	AREA (sq km)
within Noise Limited Contour	4034119	42672.1
not affected by terrain losses	4012781	41820.4
lost to NTSC IX	0	0.0
lost to additional IX by ATV	234194	562.4
lost to ATV IX only	234194	562.4
lost to all IX	234194	562.4

Figure 3

Potential Interfering Stations Included in above Scenario 3

51A GA AUGUSTA	BMPCDT	20080219ATL	CP
51A KY HARLAN	DTVPLN	DTVP1797	PLN
51A NC GREENVILLE	BPCDT	20080317ABS	CP
50A NC KANNAPOLIS	DTVPLN	DTVP1769	PLN

After Analysis

Results for: 51A NC GREENSBORO BLCDT 20050628AAB LIC
HAAT 569.0 m, ATV ERP 1000.0 kW

	POPULATION	AREA (sq km)
within Noise Limited Contour	4034119	42672.1
not affected by terrain losses	4012781	41820.4
lost to NTSC IX	0	0.0
lost to additional IX by ATV	252937	650.8
lost to ATV IX only	252937	650.8
lost to all IX	252937	650.8

Potential Interfering Stations Included in above Scenario 3

51A GA AUGUSTA	BMPCDT	20080219ATL	CP
51A KY HARLAN	DTVPLN	DTVP1797	PLN
51A NC GREENVILLE	BPCDT	20080317ABS	CP
50A NC KANNAPOLIS	USERRECORD01		APP

Percent new IX = 0.4960%

Result key: 4
Scenario 4 Affected station 16
Before Analysis

Results for: 51A NC GREENSBORO BLCDT 20050628AAB LIC
HAAT 569.0 m, ATV ERP 1000.0 kW

	POPULATION	AREA (sq km)
within Noise Limited Contour	4034119	42672.1
not affected by terrain losses	4012781	41820.4
lost to NTSC IX	0	0.0
lost to additional IX by ATV	235653	530.3
lost to ATV IX only	235653	530.3
lost to all IX	235653	530.3

Potential Interfering Stations Included in above Scenario 4

51A GA AUGUSTA	BMPCDT	20080219ATL	CP
51A KY HARLAN	DTVPLN	DTVP1797	PLN
51A NC GREENVILLE	DTVPLN	DTVP1802	PLN
50A NC KANNAPOLIS	DTVPLN	DTVP1769	PLN

After Analysis

Results for: 51A NC GREENSBORO BLCDT 20050628AAB LIC
HAAT 569.0 m, ATV ERP 1000.0 kW

	POPULATION	AREA (sq km)
within Noise Limited Contour	4034119	42672.1
not affected by terrain losses	4012781	41820.4

Figure 3

lost to NTSC IX	0	0.0
lost to additional IX by ATV	254396	618.7
lost to ATV IX only	254396	618.7
lost to all IX	254396	618.7

Potential Interfering Stations Included in above Scenario 4

51A GA AUGUSTA	BMPCDT	20080219ATL	CP
51A KY HARLAN	DTVPLN	DTVP1797	PLN
51A NC GREENVILLE	DTVPLN	DTVP1802	PLN
50A NC KANNAPOLIS	USERRECORD01		APP

Percent new IX = 0.4962%

Result key: 5

Scenario 5 Affected station 16

Before Analysis

Results for: 51A NC GREENSBORO BLCDT 20050628AAB LIC

HAAT 569.0 m, ATV ERP 1000.0 kW	POPULATION	AREA (sq km)
within Noise Limited Contour	4034119	42672.1
not affected by terrain losses	4012781	41820.4
lost to NTSC IX	0	0.0
lost to additional IX by ATV	234194	562.4
lost to ATV IX only	234194	562.4
lost to all IX	234194	562.4

Potential Interfering Stations Included in above Scenario 5

51A GA AUGUSTA	DTVPLN	DTVP1791	PLN
51A KY HARLAN	BLCDT	20061012AAS	LIC
51A NC GREENVILLE	BPCDT	20080317ABS	CP
50A NC KANNAPOLIS	DTVPLN	DTVP1769	PLN

After Analysis

Results for: 51A NC GREENSBORO BLCDT 20050628AAB LIC

HAAT 569.0 m, ATV ERP 1000.0 kW	POPULATION	AREA (sq km)
within Noise Limited Contour	4034119	42672.1
not affected by terrain losses	4012781	41820.4
lost to NTSC IX	0	0.0
lost to additional IX by ATV	252937	650.8
lost to ATV IX only	252937	650.8
lost to all IX	252937	650.8

Potential Interfering Stations Included in above Scenario 5

51A GA AUGUSTA	DTVPLN	DTVP1791	PLN
51A KY HARLAN	BLCDT	20061012AAS	LIC
51A NC GREENVILLE	BPCDT	20080317ABS	CP
50A NC KANNAPOLIS	USERRECORD01		APP

Percent new IX = 0.4960%

Result key: 6

Figure 3

Scenario 6 Affected station 16

Before Analysis

Results for: 51A NC GREENSBORO BLCDT 20050628AAB LIC

HAAT 569.0 m, ATV ERP 1000.0 kW	POPULATION	AREA (sq km)
within Noise Limited Contour	4034119	42672.1
not affected by terrain losses	4012781	41820.4
lost to NTSC IX	0	0.0
lost to additional IX by ATV	235653	530.3
lost to ATV IX only	235653	530.3
lost to all IX	235653	530.3

Potential Interfering Stations Included in above Scenario 6

51A GA AUGUSTA	DTVPLN	DTVP1791	PLN
51A KY HARLAN	BLCDT	20061012AAS	LIC
51A NC GREENVILLE	DTVPLN	DTVP1802	PLN
50A NC KANNAPOLIS	DTVPLN	DTVP1769	PLN

After Analysis

Results for: 51A NC GREENSBORO BLCDT 20050628AAB LIC

HAAT 569.0 m, ATV ERP 1000.0 kW	POPULATION	AREA (sq km)
within Noise Limited Contour	4034119	42672.1
not affected by terrain losses	4012781	41820.4
lost to NTSC IX	0	0.0
lost to additional IX by ATV	254396	618.7
lost to ATV IX only	254396	618.7
lost to all IX	254396	618.7

Potential Interfering Stations Included in above Scenario 6

51A GA AUGUSTA	DTVPLN	DTVP1791	PLN
51A KY HARLAN	BLCDT	20061012AAS	LIC
51A NC GREENVILLE	DTVPLN	DTVP1802	PLN
50A NC KANNAPOLIS	USERRECORD01		APP

Percent new IX = 0.4962%

Result key: 7

Scenario 7 Affected station 16

Before Analysis

Results for: 51A NC GREENSBORO BLCDT 20050628AAB LIC

HAAT 569.0 m, ATV ERP 1000.0 kW	POPULATION	AREA (sq km)
within Noise Limited Contour	4034119	42672.1
not affected by terrain losses	4012781	41820.4
lost to NTSC IX	0	0.0
lost to additional IX by ATV	234194	562.4
lost to ATV IX only	234194	562.4
lost to all IX	234194	562.4

Potential Interfering Stations Included in above Scenario 7

Figure 3

51A GA AUGUSTA	DTVPLN	DTVP1791	PLN
51A KY HARLAN	DTVPLN	DTVP1797	PLN
51A NC GREENVILLE	BPCDT	20080317ABS	CP
50A NC KANNAPOLIS	DTVPLN	DTVP1769	PLN

After Analysis

Results for: 51A NC GREENSBORO BLCDT 20050628AAB LIC
 HAAT 569.0 m, ATV ERP 1000.0 kW

	POPULATION	AREA (sq km)
within Noise Limited Contour	4034119	42672.1
not affected by terrain losses	4012781	41820.4
lost to NTSC IX	0	0.0
lost to additional IX by ATV	252937	650.8
lost to ATV IX only	252937	650.8
lost to all IX	252937	650.8

Potential Interfering Stations Included in above Scenario 7

51A GA AUGUSTA	DTVPLN	DTVP1791	PLN
51A KY HARLAN	DTVPLN	DTVP1797	PLN
51A NC GREENVILLE	BPCDT	20080317ABS	CP
50A NC KANNAPOLIS	USERRECORD01		APP

Percent new IX = 0.4960%

Result key: 8
 Scenario 8 Affected station 16
 Before Analysis

Results for: 51A NC GREENSBORO BLCDT 20050628AAB LIC
 HAAT 569.0 m, ATV ERP 1000.0 kW

	POPULATION	AREA (sq km)
within Noise Limited Contour	4034119	42672.1
not affected by terrain losses	4012781	41820.4
lost to NTSC IX	0	0.0
lost to additional IX by ATV	235653	530.3
lost to ATV IX only	235653	530.3
lost to all IX	235653	530.3

Potential Interfering Stations Included in above Scenario 8

51A GA AUGUSTA	DTVPLN	DTVP1791	PLN
51A KY HARLAN	DTVPLN	DTVP1797	PLN
51A NC GREENVILLE	DTVPLN	DTVP1802	PLN
50A NC KANNAPOLIS	DTVPLN	DTVP1769	PLN

After Analysis

Results for: 51A NC GREENSBORO BLCDT 20050628AAB LIC
 HAAT 569.0 m, ATV ERP 1000.0 kW

	POPULATION	AREA (sq km)
within Noise Limited Contour	4034119	42672.1
not affected by terrain losses	4012781	41820.4
lost to NTSC IX	0	0.0
lost to additional IX by ATV	254396	618.7
lost to ATV IX only	254396	618.7

Figure 3

lost to all IX 254396 618.7

Potential Interfering Stations Included in above Scenario 8

51A GA AUGUSTA	DTVPLN	DTVP1791	PLN
51A KY HARLAN	DTVPLN	DTVP1797	PLN
51A NC GREENVILLE	DTVPLN	DTVP1802	PLN
50A NC KANNAPOLIS	USERRECORD01		APP

Percent new IX = 0.4962%

Worst case new IX 0.4962% Scenario 2

#####

Analysis of Interference to Affected Station 17

Analysis of current record

Channel	Call	City/State	Application	Ref. No.
51	WFMY-TV	GREENSBORO NC	DTVPLN	-DTVP1801

Stations Potentially Affecting This Station

Chan	Call	City/State	Dist(km)	Status	Application	Ref. No.
50	WAXN-TV	KANNAPOLIS NC	104.9	PLN	DTVPLN	-DTVP1769
51	WFXG	AUGUSTA GA	328.1	CP MOD	BMPCDT	-20080219ATL
51	WFXG	AUGUSTA GA	328.1	PLN	DTVPLN	-DTVP1791
51	WAGV	HARLAN KY	333.1	LIC	BLCDT	-20061012AAS
51	WAGV	HARLAN KY	333.1	PLN	DTVPLN	-DTVP1797
51	WEPX	GREENVILLE NC	224.8	CP	BPCDT	-20080317ABS
51	WEPX	GREENVILLE NC	224.8	PLN	DTVPLN	-DTVP1802
50	WAXN-TV	KANNAPOLIS NC	104.9	APP	USERRECORD-01	

Total scenarios = 8

Result key: 9
 Scenario 1 Affected station 17
 Before Analysis

Results for: 51A NC GREENSBORO DTVPLN DTVP1801 PLN
 HAAT 569.0 m, ATV ERP 1000.0 kW

	POPULATION	AREA (sq km)
within Noise Limited Contour	4034119	42672.1
not affected by terrain losses	4012781	41820.4
lost to NTSC IX	0	0.0
lost to additional IX by ATV	234194	562.4
lost to ATV IX only	234194	562.4
lost to all IX	234194	562.4

Potential Interfering Stations Included in above Scenario 1

51A GA AUGUSTA	BMPCDT	20080219ATL	CP
51A KY HARLAN	BLCDT	20061012AAS	LIC
51A NC GREENVILLE	BPCDT	20080317ABS	CP

Figure 3

50A NC KANNAPOLIS DTVPLN DTVP1769 PLN

After Analysis

Results for: 51A NC GREENSBORO DTVPLN DTVP1801 PLN

HAAT 569.0 m, ATV ERP 1000.0 kW

	POPULATION	AREA (sq km)
within Noise Limited Contour	4034119	42672.1
not affected by terrain losses	4012781	41820.4
lost to NTSC IX	0	0.0
lost to additional IX by ATV	252937	650.8
lost to ATV IX only	252937	650.8
lost to all IX	252937	650.8

Potential Interfering Stations Included in above Scenario 1

51A GA AUGUSTA	BMPCDT	20080219ATL	CP
51A KY HARLAN	BLCDT	20061012AAS	LIC
51A NC GREENVILLE	BPCDT	20080317ABS	CP
50A NC KANNAPOLIS	USERRECORD01		APP

Percent new IX = 0.4960%

Result key: 10

Scenario 2 Affected station 17

Before Analysis

Results for: 51A NC GREENSBORO DTVPLN DTVP1801 PLN

HAAT 569.0 m, ATV ERP 1000.0 kW

	POPULATION	AREA (sq km)
within Noise Limited Contour	4034119	42672.1
not affected by terrain losses	4012781	41820.4
lost to NTSC IX	0	0.0
lost to additional IX by ATV	235653	530.3
lost to ATV IX only	235653	530.3
lost to all IX	235653	530.3

Potential Interfering Stations Included in above Scenario 2

51A GA AUGUSTA	BMPCDT	20080219ATL	CP
51A KY HARLAN	BLCDT	20061012AAS	LIC
51A NC GREENVILLE	DTVPLN	DTV1802	PLN
50A NC KANNAPOLIS	DTVPLN	DTV1769	PLN

After Analysis

Results for: 51A NC GREENSBORO DTVPLN DTVP1801 PLN

HAAT 569.0 m, ATV ERP 1000.0 kW

	POPULATION	AREA (sq km)
within Noise Limited Contour	4034119	42672.1
not affected by terrain losses	4012781	41820.4
lost to NTSC IX	0	0.0
lost to additional IX by ATV	254396	618.7
lost to ATV IX only	254396	618.7
lost to all IX	254396	618.7

Potential Interfering Stations Included in above Scenario 2

Figure 3

51A GA AUGUSTA	BMPCDT	20080219ATL	CP
51A KY HARLAN	BLCDT	20061012AAS	LIC
51A NC GREENVILLE	DTVPLN	DTV1802	PLN
50A NC KANNAPOLIS	USERRECORD01		APP

Percent new IX = 0.4962%

Result key: 11

Scenario 3 Affected station 17

Before Analysis

Results for: 51A NC GREENSBORO DTVPLN DTVP1801 PLN

HAAT 569.0 m, ATV ERP 1000.0 kW

	POPULATION	AREA (sq km)
within Noise Limited Contour	4034119	42672.1
not affected by terrain losses	4012781	41820.4
lost to NTSC IX	0	0.0
lost to additional IX by ATV	234194	562.4
lost to ATV IX only	234194	562.4
lost to all IX	234194	562.4

Potential Interfering Stations Included in above Scenario 3

51A GA AUGUSTA	BMPCDT	20080219ATL	CP
51A KY HARLAN	DTVPLN	DTV1797	PLN
51A NC GREENVILLE	BPCDT	20080317ABS	CP
50A NC KANNAPOLIS	DTVPLN	DTV1769	PLN

After Analysis

Results for: 51A NC GREENSBORO DTVPLN DTVP1801 PLN

HAAT 569.0 m, ATV ERP 1000.0 kW

	POPULATION	AREA (sq km)
within Noise Limited Contour	4034119	42672.1
not affected by terrain losses	4012781	41820.4
lost to NTSC IX	0	0.0
lost to additional IX by ATV	252937	650.8
lost to ATV IX only	252937	650.8
lost to all IX	252937	650.8

Potential Interfering Stations Included in above Scenario 3

51A GA AUGUSTA	BMPCDT	20080219ATL	CP
51A KY HARLAN	DTVPLN	DTV1797	PLN
51A NC GREENVILLE	BPCDT	20080317ABS	CP
50A NC KANNAPOLIS	USERRECORD01		APP

Percent new IX = 0.4960%

Result key: 12

Scenario 4 Affected station 17

Before Analysis

Results for: 51A NC GREENSBORO DTVPLN DTVP1801 PLN

HAAT 569.0 m, ATV ERP 1000.0 kW

	POPULATION	AREA (sq km)
--	------------	--------------

Figure 3

within Noise Limited Contour	4034119	42672.1	
not affected by terrain losses	4012781	41820.4	
lost to NTSC IX	0	0.0	
lost to additional IX by ATV	235653	530.3	
lost to ATV IX only	235653	530.3	
lost to all IX	235653	530.3	
Potential Interfering Stations Included in above Scenario	4		
51A GA AUGUSTA	BMPCDT	20080219ATL	CP
51A KY HARLAN	DTVPLN	DTVP1797	PLN
51A NC GREENVILLE	DTVPLN	DTVP1802	PLN
50A NC KANNAPOLIS	DTVPLN	DTVP1769	PLN
After Analysis			
Results for: 51A NC GREENSBORO	DTVPLN	DTVP1801	PLN
HAAT 569.0 m, ATV ERP 1000.0 kW			
	POPULATION	AREA (sq km)	
within Noise Limited Contour	4034119	42672.1	
not affected by terrain losses	4012781	41820.4	
lost to NTSC IX	0	0.0	
lost to additional IX by ATV	254396	618.7	
lost to ATV IX only	254396	618.7	
lost to all IX	254396	618.7	
Potential Interfering Stations Included in above Scenario	4		
51A GA AUGUSTA	BMPCDT	20080219ATL	CP
51A KY HARLAN	DTVPLN	DTVP1797	PLN
51A NC GREENVILLE	DTVPLN	DTVP1802	PLN
50A NC KANNAPOLIS	USERRECORD01		APP
Percent new IX =	0.4962%		
Result key:	13		
Scenario	5 Affected station	17	
Before Analysis			
Results for: 51A NC GREENSBORO	DTVPLN	DTVP1801	PLN
HAAT 569.0 m, ATV ERP 1000.0 kW			
	POPULATION	AREA (sq km)	
within Noise Limited Contour	4034119	42672.1	
not affected by terrain losses	4012781	41820.4	
lost to NTSC IX	0	0.0	
lost to additional IX by ATV	234194	562.4	
lost to ATV IX only	234194	562.4	
lost to all IX	234194	562.4	
Potential Interfering Stations Included in above Scenario	5		
51A GA AUGUSTA	DTVPLN	DTVP1791	PLN
51A KY HARLAN	BLCDDT	20061012AAS	LIC
51A NC GREENVILLE	BPCDDT	20080317ABS	CP
50A NC KANNAPOLIS	DTVPLN	DTVP1769	PLN
After Analysis			

Figure 3

Results for: 51A NC GREENSBORO	DTVPLN	DTVP1801	PLN
HAAT 569.0 m, ATV ERP 1000.0 kW			
	POPULATION	AREA (sq km)	
within Noise Limited Contour	4034119	42672.1	
not affected by terrain losses	4012781	41820.4	
lost to NTSC IX	0	0.0	
lost to additional IX by ATV	252937	650.8	
lost to ATV IX only	252937	650.8	
lost to all IX	252937	650.8	
Potential Interfering Stations Included in above Scenario	5		
51A GA AUGUSTA	DTVPLN	DTVP1791	PLN
51A KY HARLAN	BLCDDT	20061012AAS	LIC
51A NC GREENVILLE	BPCDDT	20080317ABS	CP
50A NC KANNAPOLIS	USERRECORD01		APP
Percent new IX =	0.4960%		
Result key:	14		
Scenario	6 Affected station	17	
Before Analysis			
Results for: 51A NC GREENSBORO	DTVPLN	DTVP1801	PLN
HAAT 569.0 m, ATV ERP 1000.0 kW			
	POPULATION	AREA (sq km)	
within Noise Limited Contour	4034119	42672.1	
not affected by terrain losses	4012781	41820.4	
lost to NTSC IX	0	0.0	
lost to additional IX by ATV	235653	530.3	
lost to ATV IX only	235653	530.3	
lost to all IX	235653	530.3	
Potential Interfering Stations Included in above Scenario	6		
51A GA AUGUSTA	DTVPLN	DTVP1791	PLN
51A KY HARLAN	BLCDDT	20061012AAS	LIC
51A NC GREENVILLE	DTVPLN	DTVP1802	PLN
50A NC KANNAPOLIS	DTVPLN	DTVP1769	PLN
After Analysis			
Results for: 51A NC GREENSBORO	DTVPLN	DTVP1801	PLN
HAAT 569.0 m, ATV ERP 1000.0 kW			
	POPULATION	AREA (sq km)	
within Noise Limited Contour	4034119	42672.1	
not affected by terrain losses	4012781	41820.4	
lost to NTSC IX	0	0.0	
lost to additional IX by ATV	254396	618.7	
lost to ATV IX only	254396	618.7	
lost to all IX	254396	618.7	
Potential Interfering Stations Included in above Scenario	6		
51A GA AUGUSTA	DTVPLN	DTVP1791	PLN
51A KY HARLAN	BLCDDT	20061012AAS	LIC

Figure 3

51A NC GREENVILLE	DTVPLN	DTVP1802	PLN
50A NC KANNAPOLIS	USERRECORD01		APP
Percent new IX = 0.4962%			
Result key: 15			
Scenario 7	Affected station	17	
Before Analysis			
Results for: 51A NC GREENSBORO	DTVPLN	DTVP1801	PLN
HAAT 569.0 m, ATV ERP 1000.0 kW			
	POPULATION	AREA (sq km)	
within Noise Limited Contour	4034119	42672.1	
not affected by terrain losses	4012781	41820.4	
lost to NTSC IX	0	0.0	
lost to additional IX by ATV	234194	562.4	
lost to ATV IX only	234194	562.4	
lost to all IX	234194	562.4	
Potential Interfering Stations Included in above Scenario 7			
51A GA AUGUSTA	DTVPLN	DTVP1791	PLN
51A KY HARLAN	DTVPLN	DTVP1797	PLN
51A NC GREENVILLE	BPCDT	20080317ABS	CP
50A NC KANNAPOLIS	DTVPLN	DTVP1769	PLN
After Analysis			
Results for: 51A NC GREENSBORO	DTVPLN	DTVP1801	PLN
HAAT 569.0 m, ATV ERP 1000.0 kW			
	POPULATION	AREA (sq km)	
within Noise Limited Contour	4034119	42672.1	
not affected by terrain losses	4012781	41820.4	
lost to NTSC IX	0	0.0	
lost to additional IX by ATV	252937	650.8	
lost to ATV IX only	252937	650.8	
lost to all IX	252937	650.8	
Potential Interfering Stations Included in above Scenario 7			
51A GA AUGUSTA	DTVPLN	DTVP1791	PLN
51A KY HARLAN	DTVPLN	DTVP1797	PLN
51A NC GREENVILLE	BPCDT	20080317ABS	CP
50A NC KANNAPOLIS	USERRECORD01		APP
Percent new IX = 0.4960%			
Result key: 16			
Scenario 8	Affected station	17	
Before Analysis			
Results for: 51A NC GREENSBORO	DTVPLN	DTVP1801	PLN
HAAT 569.0 m, ATV ERP 1000.0 kW			
	POPULATION	AREA (sq km)	
within Noise Limited Contour	4034119	42672.1	
not affected by terrain losses	4012781	41820.4	
lost to NTSC IX	0	0.0	

Figure 3

lost to additional IX by ATV	235653	530.3	
lost to ATV IX only	235653	530.3	
lost to all IX	235653	530.3	
Potential Interfering Stations Included in above Scenario		8	
51A GA AUGUSTA	DTVPLN	DTVP1791	PLN
51A KY HARLAN	DTVPLN	DTVP1797	PLN
51A NC GREENVILLE	DTVPLN	DTVP1802	PLN
50A NC KANNAPOLIS	DTVPLN	DTVP1769	PLN
After Analysis			
Results for: 51A NC GREENSBORO	DTVPLN	DTVP1801	PLN
HAAT 569.0 m, ATV ERP 1000.0 kW			
	POPULATION	AREA (sq km)	
within Noise Limited Contour	4034119	42672.1	
not affected by terrain losses	4012781	41820.4	
lost to NTSC IX	0	0.0	
lost to additional IX by ATV	254396	618.7	
lost to ATV IX only	254396	618.7	
lost to all IX	254396	618.7	
Potential Interfering Stations Included in above Scenario		8	
51A GA AUGUSTA	DTVPLN	DTVP1791	PLN
51A KY HARLAN	DTVPLN	DTVP1797	PLN
51A NC GREENVILLE	DTVPLN	DTVP1802	PLN
50A NC KANNAPOLIS	USERRECORD01		APP
Percent new IX = 0.4962%			
Worst case new IX	0.4962% Scenario	2	
#####			
Analysis of Interference to Affected Station 18			
Analysis of current record			
Channel	Call	City/State	Application Ref. No.
50	WAXN-TV	KANNAPOLIS NC	USERRECORD-01
Stations Potentially Affecting This Station			
Chan	Call	City/State	Dist(km) Status Application Ref. No.
49	WRAZ	RALEIGH NC	204.3 CP MOD BMPCDT -20040329AKW
49	WRAZ	RALEIGH NC	204.3 PLN DTVPLN -DTVP1745
49	WLFG	GRUNDY VA	212.5 CP BPCDT -19991029AGK
49	WLFG	GRUNDY VA	212.5 PLN DTVPLN -DTVP1754
50	WCBD-TV	CHARLESTON SC	274.9 CP MOD BMPCDT -20040419ABK
50	WCBD-TV	CHARLESTON SC	274.9 PLN DTVPLN -DTVP1778
50	WGNT	PORTSMOUTH VA	420.2 LIC BLCDT -20020718AAK
50	WGNT	PORTSMOUTH VA	420.2 PLN DTVPLN -DTVP1780
50	WOAY-TV	OAK HILL WV	302.0 LIC BLCDT -20070426AAK
50	WOAY-TV	OAK HILL WV	302.0 PLN DTVPLN -DTVP1784

Figure 3

51	WFXG	AUGUSTA GA	228.9	CP MOD	BMPCDT	-20080219ATL
51	WFXG	AUGUSTA GA	228.9	PLN	DTVPLN	-DTVP1791
51	WFMY-TV	GREENSBORO NC	104.9	LIC	BLCDT	-20050628AAB
51	WFMY-TV	GREENSBORO NC	104.9	PLN	DTVPLN	-DTVP1801

Total scenarios = 8

Result key: 17
 Scenario 1 Affected station 18
 Before Analysis

Results for: 50A NC KANNAPOLIS USERRECORD01 APP
 HAAT 377.0 m, ATV ERP 150.0 kW

	POPULATION	AREA (sq km)
within Noise Limited Contour	2149762	20927.1
not affected by terrain losses	2141889	20675.1
lost to NTSC IX	0	0.0
lost to additional IX by ATV	28888	804.0
lost to ATV IX only	28888	804.0
lost to all IX	28888	804.0

Potential Interfering Stations Included in above Scenario 1

50A SC CHARLESTON	BMPCDT	20040419ABK	CP
50A WV OAK HILL	BLCDT	20070426AAK	LIC
51A NC GREENSBORO	BLCDT	20050628AAB	LIC

Result key: 18
 Scenario 2 Affected station 18
 Before Analysis

Results for: 50A NC KANNAPOLIS USERRECORD01 APP
 HAAT 377.0 m, ATV ERP 150.0 kW

	POPULATION	AREA (sq km)
within Noise Limited Contour	2149762	20927.1
not affected by terrain losses	2141889	20675.1
lost to NTSC IX	0	0.0
lost to additional IX by ATV	28888	804.0
lost to ATV IX only	28888	804.0
lost to all IX	28888	804.0

Potential Interfering Stations Included in above Scenario 2

50A SC CHARLESTON	BMPCDT	20040419ABK	CP
50A WV OAK HILL	BLCDT	20070426AAK	LIC
51A NC GREENSBORO	DTVPLN	DTVP1801	PLN

Result key: 19
 Scenario 3 Affected station 18
 Before Analysis

Results for: 50A NC KANNAPOLIS USERRECORD01 APP
 HAAT 377.0 m, ATV ERP 150.0 kW

	POPULATION	AREA (sq km)
within Noise Limited Contour	2149762	20927.1
not affected by terrain losses	2141889	20675.1

Figure 3

lost to NTSC IX	0	0.0
lost to additional IX by ATV	28888	804.0
lost to ATV IX only	28888	804.0
lost to all IX	28888	804.0

Potential Interfering Stations Included in above Scenario 3

50A SC CHARLESTON	BMPCDT	20040419ABK	CP
50A WV OAK HILL	DTVPLN	DTVP1784	PLN
51A NC GREENSBORO	BLCDT	20050628AAB	LIC

Result key: 20
 Scenario 4 Affected station 18
 Before Analysis

Results for: 50A NC KANNAPOLIS USERRECORD01 APP
 HAAT 377.0 m, ATV ERP 150.0 kW

	POPULATION	AREA (sq km)
within Noise Limited Contour	2149762	20927.1
not affected by terrain losses	2141889	20675.1
lost to NTSC IX	0	0.0
lost to additional IX by ATV	28888	804.0
lost to ATV IX only	28888	804.0
lost to all IX	28888	804.0

Potential Interfering Stations Included in above Scenario 4

50A SC CHARLESTON	BMPCDT	20040419ABK	CP
50A WV OAK HILL	DTVPLN	DTVP1784	PLN
51A NC GREENSBORO	DTVPLN	DTVP1801	PLN

Result key: 21
 Scenario 5 Affected station 18
 Before Analysis

Results for: 50A NC KANNAPOLIS USERRECORD01 APP
 HAAT 377.0 m, ATV ERP 150.0 kW

	POPULATION	AREA (sq km)
within Noise Limited Contour	2149762	20927.1
not affected by terrain losses	2141889	20675.1
lost to NTSC IX	0	0.0
lost to additional IX by ATV	28888	804.0
lost to ATV IX only	28888	804.0
lost to all IX	28888	804.0

Potential Interfering Stations Included in above Scenario 5

50A SC CHARLESTON	DTVPLN	DTVP1778	PLN
50A WV OAK HILL	BLCDT	20070426AAK	LIC
51A NC GREENSBORO	BLCDT	20050628AAB	LIC

Result key: 22
 Scenario 6 Affected station 18
 Before Analysis

Results for: 50A NC KANNAPOLIS USERRECORD01 APP
 HAAT 377.0 m, ATV ERP 150.0 kW

Figure 3

	POPULATION	AREA (sq km)
within Noise Limited Contour	2149762	20927.1
not affected by terrain losses	2141889	20675.1
lost to NTSC IX	0	0.0
lost to additional IX by ATV	28888	804.0
lost to ATV IX only	28888	804.0
lost to all IX	28888	804.0

Potential Interfering Stations Included in above Scenario 6

50A SC CHARLESTON	DTVPLN	DTVP1778	PLN
50A WV OAK HILL	BLCDT	20070426AAK	LIC
51A NC GREENSBORO	DTVPLN	DTVP1801	PLN

Result key: 23
Scenario 7 Affected station 18
Before Analysis

Results for: 50A NC KANNAPOLIS USERRECORD01 APP
HAAT 377.0 m, ATV ERP 150.0 kW

	POPULATION	AREA (sq km)
within Noise Limited Contour	2149762	20927.1
not affected by terrain losses	2141889	20675.1
lost to NTSC IX	0	0.0
lost to additional IX by ATV	28888	804.0
lost to ATV IX only	28888	804.0
lost to all IX	28888	804.0

Potential Interfering Stations Included in above Scenario 7

50A SC CHARLESTON	DTVPLN	DTVP1778	PLN
50A WV OAK HILL	DTVPLN	DTVP1784	PLN
51A NC GREENSBORO	BLCDT	20050628AAB	LIC

Result key: 24
Scenario 8 Affected station 18
Before Analysis

Results for: 50A NC KANNAPOLIS USERRECORD01 APP
HAAT 377.0 m, ATV ERP 150.0 kW

	POPULATION	AREA (sq km)
within Noise Limited Contour	2149762	20927.1
not affected by terrain losses	2141889	20675.1
lost to NTSC IX	0	0.0
lost to additional IX by ATV	28888	804.0
lost to ATV IX only	28888	804.0
lost to all IX	28888	804.0

Potential Interfering Stations Included in above Scenario 8

50A SC CHARLESTON	DTVPLN	DTVP1778	PLN
50A WV OAK HILL	DTVPLN	DTVP1784	PLN
51A NC GREENSBORO	DTVPLN	DTVP1801	PLN

#####

FINISHED FINISHED FINISHED FINISHED FINISHED FINISHED

Figure 3

APPENDIX

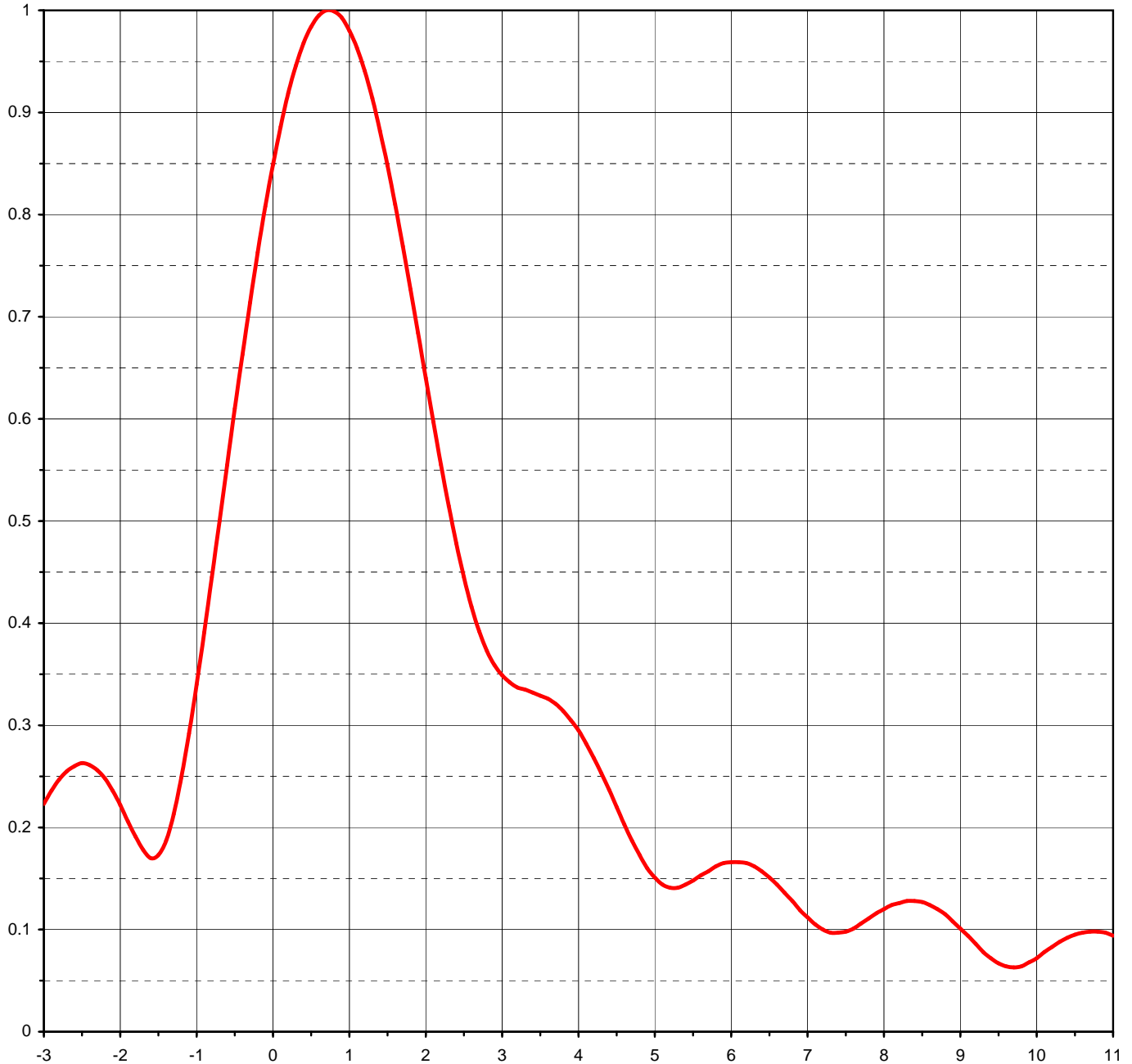
TRANSMITTING ANTENNA VERTICAL AND HORIZONTAL PLANE PATTERN



Proposal Number	C-02699		
Date	9-Jun-08		
Call Letters	WAXN-DT	Channel	50
Location	Kannapolis, NC		
Customer			
Antenna Type	TFU-25ETT-R 4C160		

ELEVATION PATTERN

RMS Gain at Main Lobe	23.00 (13.62 dB)	Beam Tilt	0.75 deg
RMS Gain at Horizontal	16.60 (12.20 dB)	Frequency	689.00 MHz
Calculated / Measured	Calculated	Drawing #	25E230075



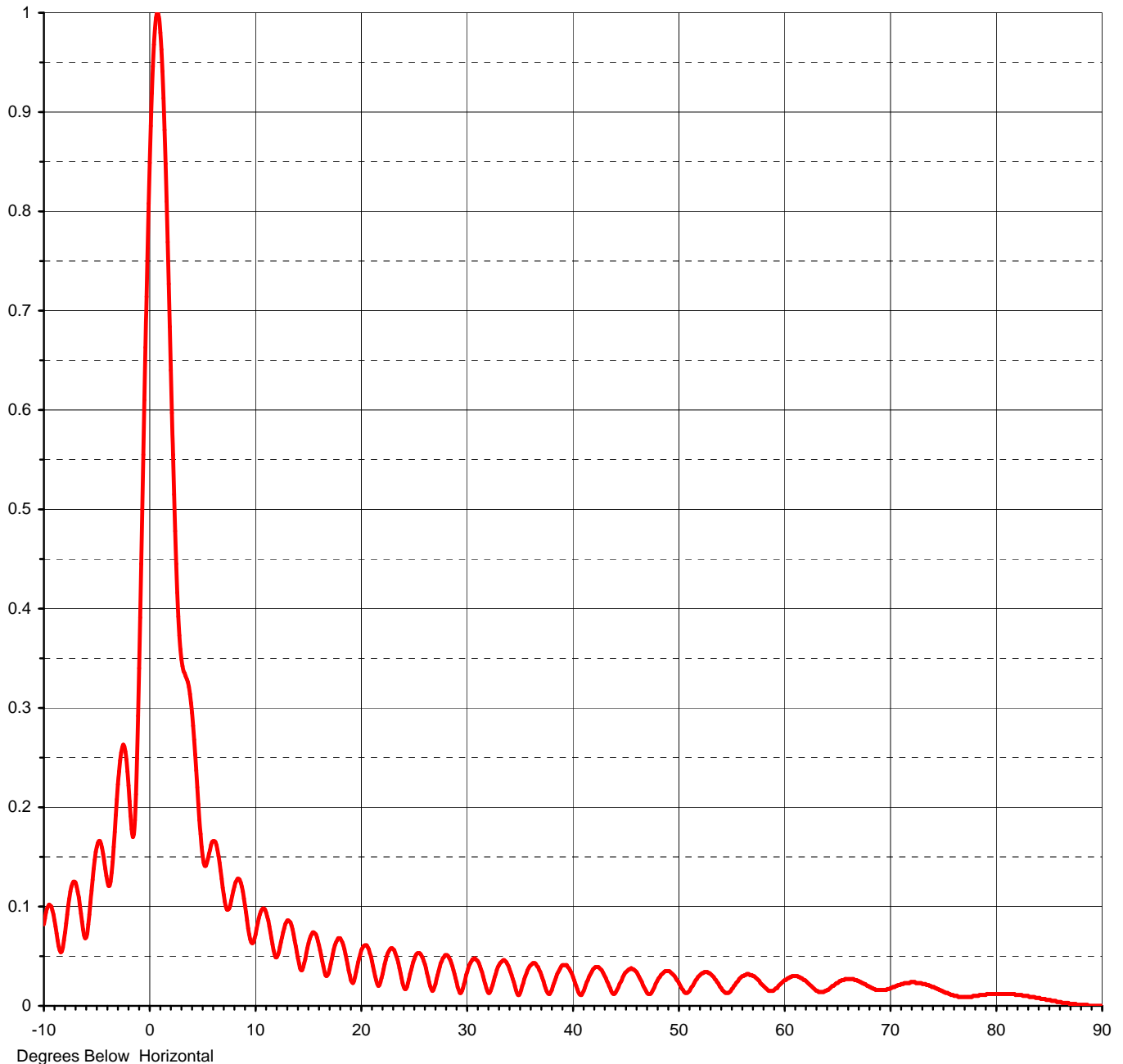
Degrees Below Horizontal



Proposal Number	C-02699	
Date	9-Jun-08	
Call Letters	WAXN-DT	Channel 50
Location	Kannapolis, NC	
Customer		
Antenna Type	TFU-25ETT-R 4C160	

ELEVATION PATTERN

RMS Gain at Main Lobe	23.00 (13.62 dB)	Beam Tilt	0.75 deg
RMS Gain at Horizontal	16.60 (12.20 dB)	Frequency	689.00 MHz
Calculated / Measured	Calculated	Drawing #	25E230075-90





Proposal Number **C-02699**
Date **9-Jun-08**
Call Letters **WAXN-DT** Channel **50**
Location **Kannapolis, NC**
Customer
Antenna Type **TFU-25ETT-R 4C160**

TABULATION OF ELEVATION PATTERN

Elevation Pattern Drawing #: **25E230075-90**

Angle	Field	Angle	Field	Angle	Field	Angle	Field	Angle	Field	Angle	Field
-10.0	0.082	2.4	0.478	10.6	0.095	30.5	0.045	51.0	0.014	71.5	0.023
-9.5	0.102	2.6	0.416	10.8	0.098	31.0	0.046	51.5	0.022	72.0	0.024
-9.0	0.086	2.8	0.373	11.0	0.097	31.5	0.034	52.0	0.030	72.5	0.023
-8.5	0.056	3.0	0.349	11.5	0.074	32.0	0.015	52.5	0.034	73.0	0.022
-8.0	0.074	3.2	0.337	12.0	0.049	32.5	0.021	53.0	0.033	73.5	0.021
-7.5	0.115	3.4	0.332	12.5	0.064	33.0	0.039	53.5	0.027	74.0	0.019
-7.0	0.124	3.6	0.326	13.0	0.084	33.5	0.046	54.0	0.019	74.5	0.017
-6.5	0.093	3.8	0.314	13.5	0.081	34.0	0.040	54.5	0.013	75.0	0.014
-6.0	0.069	4.0	0.295	14.0	0.054	34.5	0.024	55.0	0.015	75.5	0.012
-5.5	0.116	4.2	0.268	14.5	0.036	35.0	0.011	55.5	0.023	76.0	0.010
-5.0	0.160	4.4	0.237	15.0	0.058	35.5	0.027	56.0	0.029	76.5	0.009
-4.5	0.159	4.6	0.203	15.5	0.074	36.0	0.040	56.5	0.032	77.0	0.009
-4.0	0.125	4.8	0.173	16.0	0.065	36.5	0.043	57.0	0.031	77.5	0.009
-3.5	0.145	5.0	0.151	16.5	0.040	37.0	0.034	57.5	0.027	78.0	0.010
-3.0	0.223	5.2	0.141	17.0	0.033	37.5	0.018	58.0	0.021	78.5	0.011
-2.8	0.247	5.4	0.144	17.5	0.057	38.0	0.014	58.5	0.016	79.0	0.011
-2.6	0.260	5.6	0.153	18.0	0.068	38.5	0.029	59.0	0.015	79.5	0.012
-2.4	0.261	5.8	0.162	18.5	0.057	39.0	0.040	59.5	0.020	80.0	0.012
-2.2	0.248	6.0	0.166	19.0	0.031	39.5	0.041	60.0	0.025	80.5	0.012
-2.0	0.222	6.2	0.165	19.5	0.029	40.0	0.032	60.5	0.028	81.0	0.012
-1.8	0.191	6.4	0.157	20.0	0.052	40.5	0.017	61.0	0.030	81.5	0.012
-1.6	0.170	6.6	0.144	20.5	0.061	41.0	0.013	61.5	0.029	82.0	0.011
-1.4	0.187	6.8	0.128	21.0	0.050	41.5	0.026	62.0	0.026	82.5	0.010
-1.2	0.249	7.0	0.112	21.5	0.026	42.0	0.037	62.5	0.021	83.0	0.010
-1.0	0.340	7.2	0.100	22.0	0.028	42.5	0.039	63.0	0.016	83.5	0.009
-0.8	0.445	7.4	0.097	22.5	0.050	43.0	0.032	63.5	0.014	84.0	0.008
-0.6	0.555	7.6	0.101	23.0	0.058	43.5	0.020	64.0	0.015	84.5	0.007
-0.4	0.663	7.8	0.111	23.5	0.047	44.0	0.012	64.5	0.020	85.0	0.006
-0.2	0.763	8.0	0.120	24.0	0.023	44.5	0.022	65.0	0.023	85.5	0.005
0.0	0.849	8.2	0.126	24.5	0.023	45.0	0.033	65.5	0.026	86.0	0.004
0.2	0.919	8.4	0.128	25.0	0.044	45.5	0.037	66.0	0.027	86.5	0.003
0.4	0.968	8.6	0.124	25.5	0.053	46.0	0.035	66.5	0.027	87.0	0.002
0.6	0.995	8.8	0.115	26.0	0.045	46.5	0.026	67.0	0.025	87.5	0.002
0.8	0.999	9.0	0.101	26.5	0.024	47.0	0.015	67.5	0.022	88.0	0.001
1.0	0.980	9.2	0.086	27.0	0.019	47.5	0.013	68.0	0.019	88.5	0.001
1.2	0.941	9.4	0.072	27.5	0.039	48.0	0.024	68.5	0.017	89.0	0.000
1.4	0.882	9.6	0.064	28.0	0.051	48.5	0.032	69.0	0.016	89.5	0.000
1.6	0.810	9.8	0.063	28.5	0.046	49.0	0.035	69.5	0.016	90.0	0.000
1.8	0.727	10.0	0.068	29.0	0.028	49.5	0.032	70.0	0.018		
2.0	0.640	10.2	0.078	29.5	0.013	50.0	0.025	70.5	0.020		
2.2	0.555	10.4	0.088	30.0	0.031	50.5	0.016	71.0	0.022		

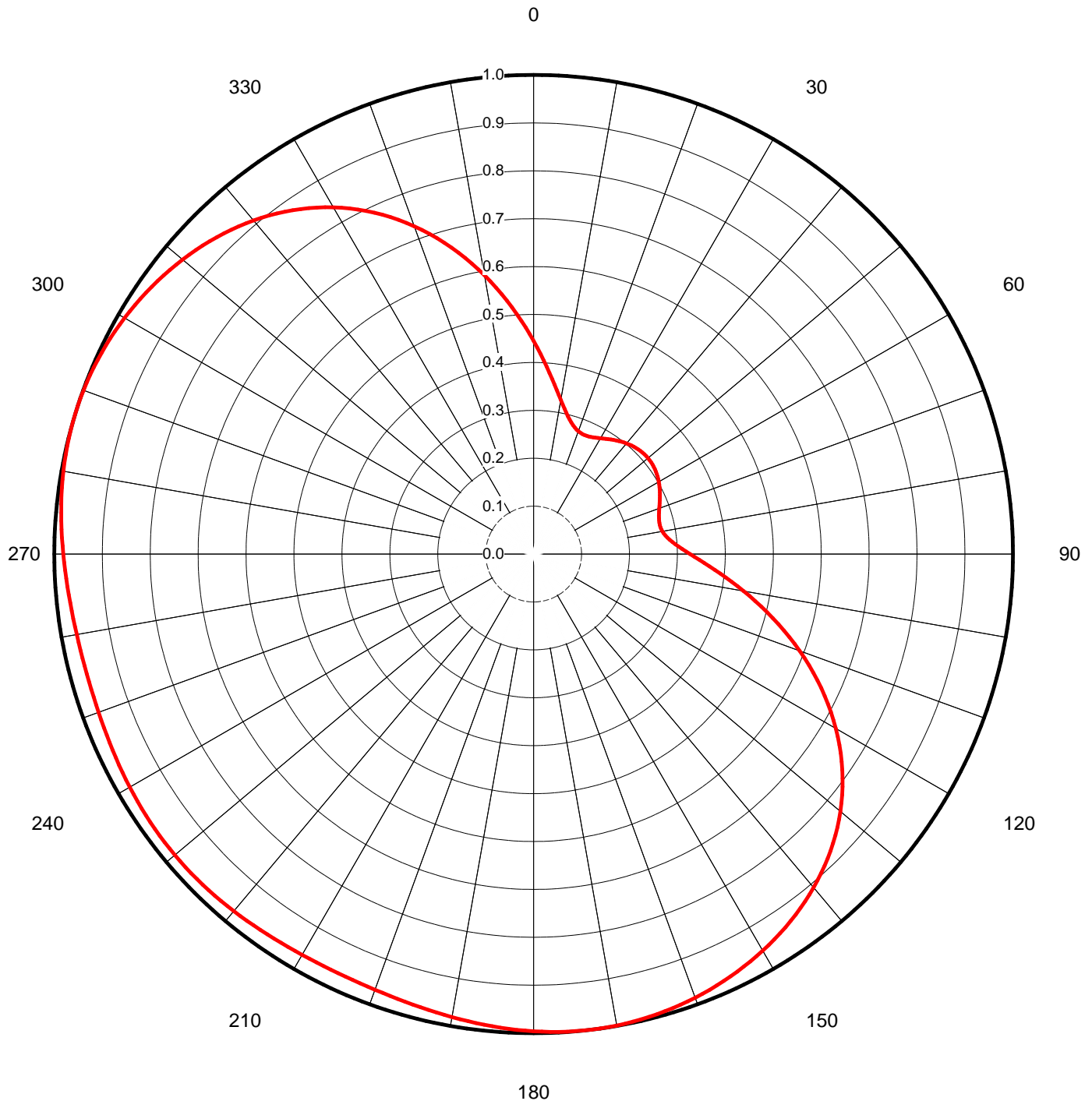
This document contains proprietary and confidential information of Dielectric Communications and SPX Corporation. It is to be used solely for the purpose for which it is provided. No disclosure, reproduction, or use of this document or any part of it may be made without the written permission of Dielectric Communications or SPX Corporation.

Proposal Number	C-02699		
Date	9-Jun-08		
Call Letters	WAXN-DT	Channel	50
Location	Kannapolis, NC		
Customer			
Antenna Type	TFU-25ETT-R 4C160		

AZIMUTH PATTERN

Gain	1.60	(2.04 dB)
Calculated / Measured	Calculated	

Frequency	689.00 MHz
Drawing #	TFU-4C160





Proposal Number **C-02699**
Date **9-Jun-08**
Call Letters **WAXN-DT** Channel **50**
Location **Kannapolis, NC**
Customer
Antenna Type **TFU-25ETT-R 4C160**

TABULATION OF AZIMUTH PATTERN

Azimuth Pattern Drawing #: **TFU-4C160**

Angle	Field	Angle	Field	Angle	Field	Angle	Field	Angle	Field	Angle	Field	Angle	Field	Angle	Field
0	0.445	45	0.309	90	0.327	135	0.876	180	0.996	225	0.976	270	0.981	315	0.935
1	0.431	46	0.310	91	0.336	136	0.883	181	0.995	226	0.976	271	0.983	316	0.930
2	0.418	47	0.311	92	0.346	137	0.890	182	0.994	227	0.977	272	0.985	317	0.925
3	0.405	48	0.311	93	0.357	138	0.897	183	0.992	228	0.977	273	0.986	318	0.920
4	0.392	49	0.311	94	0.368	139	0.903	184	0.991	229	0.977	274	0.988	319	0.915
5	0.380	50	0.311	95	0.380	140	0.909	185	0.989	230	0.977	275	0.989	320	0.909
6	0.368	51	0.311	96	0.392	141	0.914	186	0.988	231	0.977	276	0.991	321	0.903
7	0.357	52	0.311	97	0.404	142	0.920	187	0.986	232	0.977	277	0.992	322	0.897
8	0.346	53	0.311	98	0.418	143	0.925	188	0.985	233	0.977	278	0.994	323	0.890
9	0.336	54	0.310	99	0.431	144	0.930	189	0.983	234	0.976	279	0.995	324	0.883
10	0.327	55	0.309	100	0.445	145	0.935	190	0.981	235	0.976	280	0.996	325	0.876
11	0.318	56	0.308	101	0.459	146	0.939	191	0.980	236	0.976	281	0.997	326	0.869
12	0.310	57	0.306	102	0.473	147	0.944	192	0.978	237	0.975	282	0.998	327	0.861
13	0.303	58	0.305	103	0.487	148	0.948	193	0.976	238	0.974	283	0.999	328	0.853
14	0.296	59	0.303	104	0.502	149	0.952	194	0.975	239	0.974	284	0.999	329	0.844
15	0.290	60	0.302	105	0.517	150	0.956	195	0.973	240	0.973	285	1.000	330	0.835
16	0.285	61	0.300	106	0.532	151	0.959	196	0.972	241	0.972	286	1.000	331	0.826
17	0.281	62	0.297	107	0.546	152	0.963	197	0.971	242	0.971	287	1.000	332	0.817
18	0.278	63	0.295	108	0.561	153	0.966	198	0.970	243	0.970	288	1.000	333	0.807
19	0.275	64	0.293	109	0.576	154	0.969	199	0.969	244	0.970	289	1.000	334	0.797
20	0.273	65	0.291	110	0.591	155	0.972	200	0.968	245	0.969	290	0.999	335	0.786
21	0.271	66	0.288	111	0.605	156	0.975	201	0.967	246	0.968	291	0.999	336	0.775
22	0.270	67	0.286	112	0.620	157	0.978	202	0.966	247	0.967	292	0.998	337	0.764
23	0.270	68	0.284	113	0.634	158	0.981	203	0.966	248	0.967	293	0.997	338	0.752
24	0.270	69	0.281	114	0.648	159	0.983	204	0.965	249	0.966	294	0.996	339	0.740
25	0.271	70	0.279	115	0.662	160	0.985	205	0.965	250	0.966	295	0.994	340	0.728
26	0.272	71	0.277	116	0.676	161	0.987	206	0.965	251	0.965	296	0.993	341	0.715
27	0.273	72	0.275	117	0.689	162	0.989	207	0.965	252	0.965	297	0.991	342	0.703
28	0.275	73	0.273	118	0.702	163	0.991	208	0.965	253	0.965	298	0.989	343	0.689
29	0.277	74	0.272	119	0.715	164	0.993	209	0.965	254	0.965	299	0.988	344	0.676
30	0.279	75	0.271	120	0.728	165	0.994	210	0.966	255	0.965	300	0.985	345	0.662
31	0.281	76	0.270	121	0.740	166	0.996	211	0.966	256	0.965	301	0.983	346	0.648
32	0.284	77	0.270	122	0.752	167	0.997	212	0.967	257	0.966	302	0.981	347	0.634
33	0.286	78	0.270	123	0.764	168	0.998	213	0.967	258	0.966	303	0.978	348	0.620
34	0.288	79	0.271	124	0.775	169	0.998	214	0.968	259	0.967	304	0.975	349	0.605
35	0.291	80	0.273	125	0.786	170	0.999	215	0.969	260	0.968	305	0.973	350	0.591
36	0.293	81	0.275	126	0.797	171	1.000	216	0.970	261	0.969	306	0.970	351	0.576
37	0.295	82	0.278	127	0.807	172	1.000	217	0.970	262	0.970	307	0.966	352	0.561
38	0.297	83	0.281	128	0.817	173	1.000	218	0.971	263	0.971	308	0.963	353	0.546
39	0.300	84	0.285	129	0.826	174	1.000	219	0.972	264	0.972	309	0.960	354	0.532
40	0.302	85	0.290	130	0.835	175	1.000	220	0.973	265	0.973	310	0.956	355	0.517
41	0.303	86	0.296	131	0.844	176	0.999	221	0.974	266	0.975	311	0.952	356	0.502
42	0.305	87	0.303	132	0.853	177	0.999	222	0.974	267	0.976	312	0.948	357	0.488
43	0.306	88	0.310	133	0.861	178	0.998	223	0.975	268	0.978	313	0.944	358	0.473
44	0.308	89	0.318	134	0.869	179	0.997	224	0.975	269	0.980	314	0.940	359	0.459

This document contains proprietary and confidential information of Dielectric Communications and SPX Corporation. It is to be used solely for the purpose for which it is provided. No disclosure, reproduction, or use of this document or any part of it may be made without the written permission of Dielectric Communications or SPX Corporation.