

JAMES B. HATFIELD, PE  
BENJAMIN F. DAWSON III, PE  
THOMAS M. ECKELS, PE  
STEPHEN S. LOCKWOOD, PE  
DAVID J. PINION, PE

PAUL W. LEONARD, PE  
ERIK C. SWANSON, EIT  
THOMAS S. GORTON, PE

HATFIELD & DAWSON  
CONSULTING ELECTRICAL ENGINEERS  
9500 GREENWOOD AVE. N.  
SEATTLE, WASHINGTON 98103

TELEPHONE  
(206) 783-9151  
FACSIMILE  
(206) 789-9834  
E-MAIL  
hatdaw@hatdaw.com

MAURY L. HATFIELD, PE  
CONSULTANT  
BOX 1326  
ALICE SPRINGS, NT 5950  
AUSTRALIA

## **MULTIPLE OWNERSHIP SERVICE CONTOUR ANALYSIS**

**Prepared for  
South Sound Broadcasting, LLC  
August 2006**

The attached analysis of compliance with the radio multiple ownership rules was prepared in accordance with the Rules and Regulations of the Federal Communications Commission, in connection with minor modification application for station KFMY(FM) at Oakville, Washington.

The only other attributable stations in the vicinity are KLSY 300A South Bend, and a new AM station on 1350 kHz at Raymond.

### **Unrated Market Analysis**

An ownership analysis has been made consistent with the Commission's interim rules for unrated markets. The 70 dBu contours of FM stations were determined from the technical data contained in the most recent edition of the FCC FM Database. The listed antenna height above average terrain was used together with topographic data obtained from the digitized 30 second or 3 second database. The 5 mV/m daytime contours of AM stations were determined from the technical data contained in the most recent edition of the FCC AM Database. The listed antenna parameter information was used together with a digitized version of the FCC M-3 or Region II ground conductivity database.

The service contours were plotted using correct map projection mathematics. Those stations whose transmitter sites are within the respective principal community service contours of the

Hatfield & Dawson Consulting Engineers

stations proposed to be commonly owned have only the sites rather than their contours shown. All contours and enclosed transmitter site locations have been labeled. A list of all stations considered is included with this statement.

In counting stations providing service to the "market" defined by each of the discrete clusters formed in unrated markets, stations whose transmitter sites are located in excess of 92 km from the perimeter of the common overlap area have been excluded, as have other stations to be commonly-owned but which do not have overlap with the discrete cluster being studied.

This exhibit evidences at least the minimum number of stations necessary to demonstrate compliance with the rules concerning radio multiple ownership in unrated markets. In order to qualify for common ownership of this 1AM/2FM cluster, there must be at least six stations in the relevant "market". This study demonstrates that there are at least 19 stations in the relevant market.

August 21, 2006

A handwritten signature in black ink, appearing to read "Erik C. Swanson". The signature is fluid and cursive, with a long horizontal stroke at the end.

Erik C. Swanson

**AM STATIONS WITH 5 mV/m CONTOURS OVERLAPPING  
5 mV/m CONTOUR OF RAYMOND 1350 kHz, AND  
70 dBu CONTOURS OF KLSY (CP), KFMY (App)**

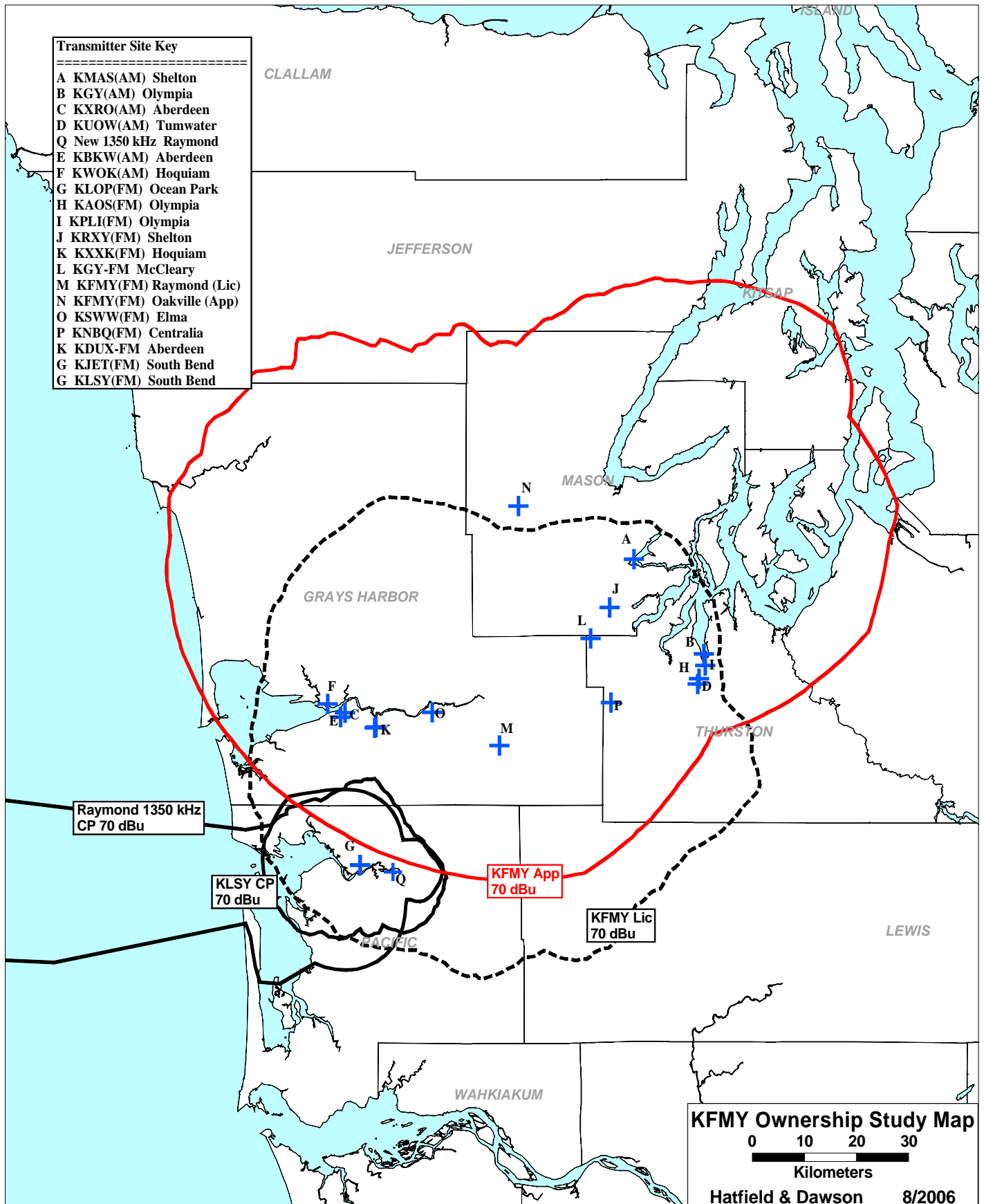
Call Status	City St Co	FCC File No.	Freq Mode	Power(kW) Hrs Cls	Latitude Longitude
===== KMAS LIC	SHELTON WA US	BL19880603AF	1030 ND1	10.000 DAY B	N 47-13-17 W 123-04-46
KGY LIC	OLYMPIA WA US	BL	1240 ND1	1.000 UNL C	N 47-03-31 W 122-54-09
KXRO LIC	ABERDEEN WA US	BL19940927AB	1320 DAN	5.000 DAY B	N 46-57-27 W 123-48-33
KUOW LIC	TUMWATER WA US	BL19980113KB	1340 ND1	1.000 UNL C	N 47-00-25 W 122-55-07
NEW CP	RAYMOND WA US	BNP050118AKP	1350 DA2	5.000 DAY B	N 46-41-01 W 123-41-20
KBKW LIC	ABERDEEN WA US	BL19801231AJ	1450 ND1	1.000 UNL C	N 46-56-59 W 123-49-13
KWOK LIC	HOQUIAM WA US	BL19850319AB	1490 ND1	1.000 DAY C	N 46-58-22 W 123-51-10

**FM STATIONS WITH 70 dBu CONTOURS OVERLAPPING  
5 mV/m CONTOUR OF RAYMOND 1350 kHz, AND  
70 dBu CONTOURS OF KLSY (CP), KFMY (App)**

Call Status	City State	FCC File No.	Channel Freq.	ERP(kW) HAAT(m)	Latitude Longitude
=====	=====	=====	=====	=====	=====
KLOP LIC	OCEAN PARK WA	BMLED060523ADK	201A 88.1	0.550 318.2	46-41-46 123-46-17
KAOS LIC	OLYMPIA WA	BLED011228AAV	207A 89.3	1.250 74.0	47-00-58 122-54-57
KPLI LIC	OLYMPIA WA	BLED050302ADF	211A 90.1	0.100 DA -18.0	47-02-20 122-54-00
KRXY LIC	SHELTON WA	BLH981120KF	233A 94.5	0.710 291.0	47-08-18 123-08-28
KXXK LIC	HOQUIAM WA	BMLH960226KA	237A 95.3	3.000 137.0	46-55-53 123-44-02
KGY-FM LIC	MCCLEARY WA	BLH921109KE	245C3 96.9	2.350 322.0	47-05-08 123-11-19
KFMY LIC	RAYMOND WA	BLH011101ACQ	249C1 97.7	44.000 DA 403.0	46-54-05 123-25-07
KFMY APP	OAKVILLE WA	BPH050511ADR	249C 97.7	63.000 DA 728.0	47-18-46 123-22-15
KSWW LIC	ELMA WA	BLH980730KA	271C3 102.1	25.000 98.0	46-57-31 123-35-18
KNBQ LIC	CENTRALIA WA	BLH050126ABD	275C 102.9	70.000 668.0	46-58-31 123-08-16
KDUX-FM LIC	ABERDEEN WA	BMLH990125KC	284C2 104.7	31.000 110.0	46-56-00 123-43-49
KJET LIC	SOUTH BEND WA	BLH990804KC	289C2 105.7	14.000 DA 290.0	46-41-44 123-46-17
KLSY CP	SOUTH BEND WA	BNPH060221ADF	300A 107.9	0.790 DA 276.0	46-41-44 123-46-17

# Transmitter Site Key

- A KMAS(AM) Shelton
- B KGY(AM) Olympia
- C KXRO(AM) Aberdeen
- D KUOW(AM) Tumwater
- Q New 1350 kHz Raymond
- E KBKW(AM) Aberdeen
- F KWOK(AM) Hoquiam
- G KLOP(FM) Ocean Park
- H KAOS(FM) Olympia
- I KPLI(FM) Olympia
- J KRXY(FM) Shelton
- K KXXX(FM) Hoquiam
- L KGY-FM McCleary
- M KFMY(FM) Raymond (Lic)
- N KFMY(FM) Oakville (App)
- O KSWW(FM) Elma
- P KNBQ(FM) Centralia
- K KDUX-FM Aberdeen
- G KJET(FM) South Bend
- G KLSY(FM) South Bend



## KFMY Ownership Study Map

0 10 20 30  
Kilometers

Hatfield & Dawson 8/2006