

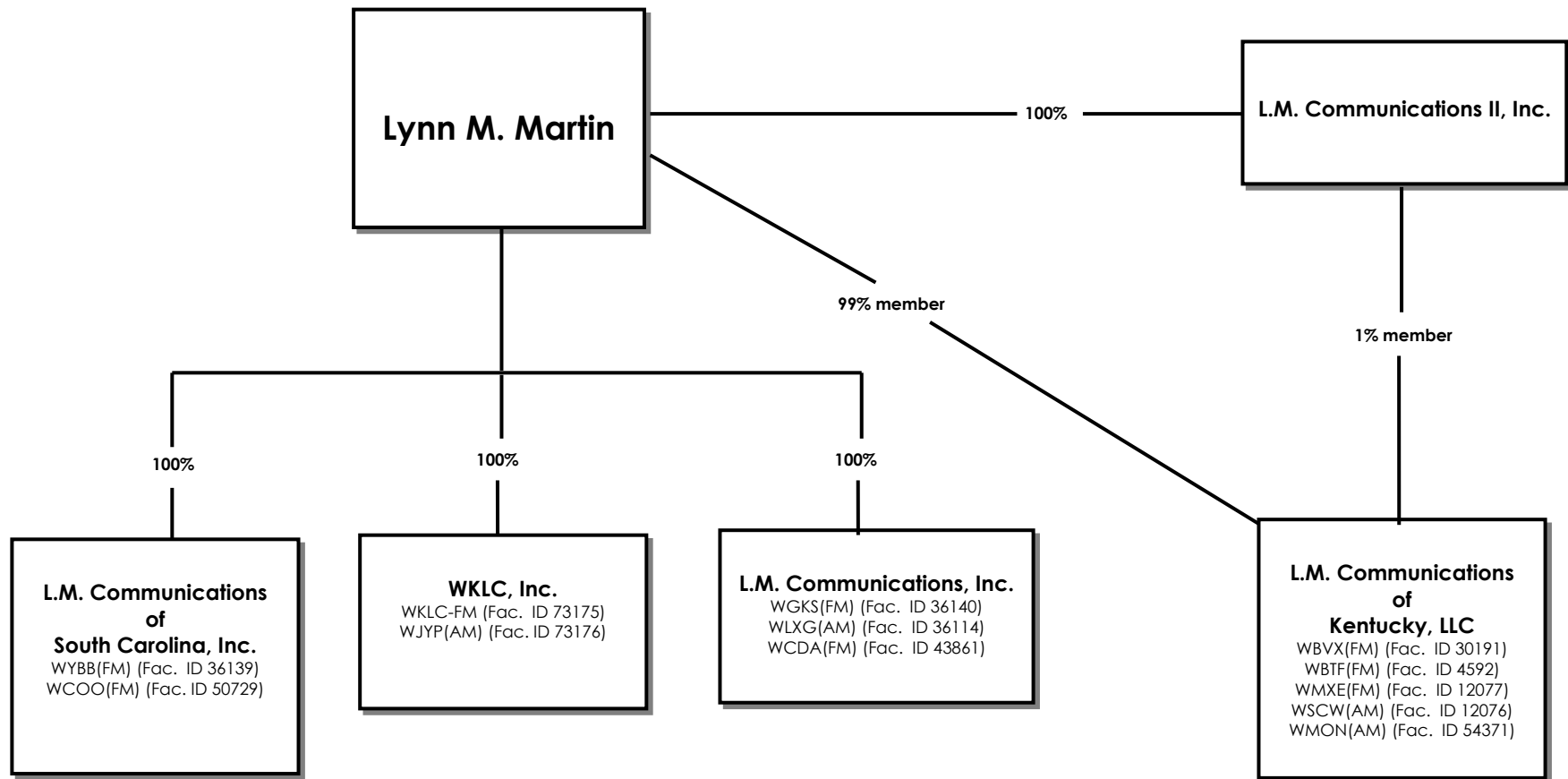
Description of Transaction

The instant application is one of five concurrently filed pro forma assignment and transfer of control applications resulting from an internal corporate restructuring of L.M. Communications of Kentucky, LLC and related entities. The applications include:

1. Request for consent to assign licenses of Station WBVX(FM) and WBTF(FM) from L.M. Communications of Kentucky, LLC to L.M. Communications, Inc.
2. Request for consent to assign licenses of Stations WMXE(FM), WSCW(AM) and WMON(AM) from L.M. Communications of Kentucky, LLC to WKLC, Inc.
3. Request for consent to transfer control of L.M. Communications of South Carolina, Inc., licensee of stations WYBB(FM) and WCOO(FM), from Lynn Martin to L.M. Communications Television, LLC
4. Request for consent to transfer control of L.M. Communications, Inc., licensee of stations WGKX(FM), WLXG(AM) and WCDA(FM), from Lynn Martin to L.M. Communications Television, LLC
5. Request for consent to transfer control of WKLC, Inc., licensee of stations WKLC-FM and WJYP(AM) from Lynn Martin to L.M. Communications Television, LLC

As the attached current organization chart shows, Lynn M. Martin ultimately controls 100% of each of the following licensee entities: WKLC, Inc., L.M. Communications, Inc., L.M. Communications of Kentucky, LLC and L.M. Communications of South Carolina, Inc. (the "Licensee Entities"). In accordance with an Agreement and Plan of Reorganization dated as of December 1, 2023, which is attached to each of the applications, the entities have proposed a corporate restructuring pursuant to which Mr. Martin shall assign and transfer all of his equity ownership interests in the Licensee Entities to L.M. Communications Television, LLC, another commonly owned entity. Following the reorganization, L.M. Communications, Inc, WKLC, Inc. and L.M. Communications of South Carolina, Inc. shall be wholly owned subsidiaries of L.M. Communications TV, LLC. As the attached post-transaction organization chart shows, Lynn M. Martin will continue to ultimately control 100% of each of the three remaining licensee entities. Therefore, no substantial change of control will occur, and the applications are properly filed on FCC Form 316.

EXISTING ORGNIZATIONAL CHART



POST-CLOSING ORGANIZATIONAL CHART

