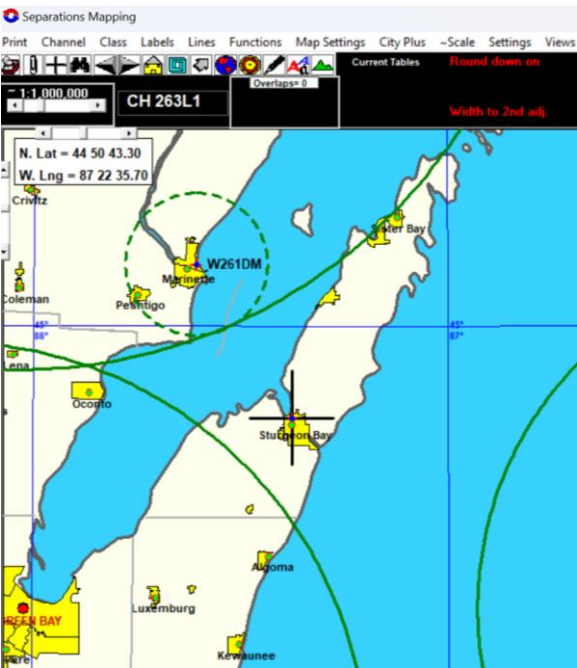
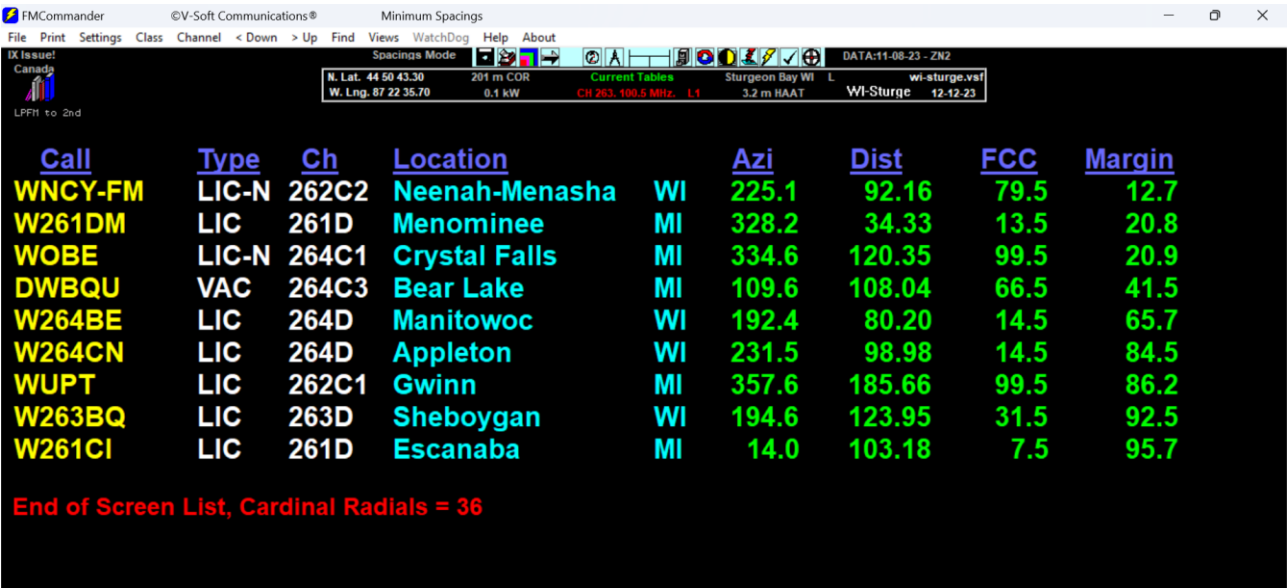


WI-Sturgeon Bay

CH263L1 100.5 MHz

Sturgeon Bay Lifestyle Educational Radio Corporation

V-Soft confirms that all channel spacings are respected in accordance with FCC rule 73.807.



WDOR AM, 910 KHz, 1 kW-DA, is 1.565 miles away.

No FM translators within 10 miles are known to receive on or near CH 263.

However, the proposed antenna passes the slope test.

DETERMINATION Results							
PASS SLOPE(100:1)NO FAA REQ - 3524.0 Meters (11561.5 Feet)away & below slope by 41.0 Meters (134.509 Feet)							
Type	C/R	Latitude	Longitude	Name	Address	Lowest Elevation (m)	Runway Length (m)
AIRP	R	44-50-57.00N	087-25-15.00W	DOOR COUNTY CHERRYLAND	DOOR STURGEON BAY, WI	214.6	1401.8
PASS SLOPE(100:1)NO FAA REQ - 2930.0 Meters (9612.73 Feet)away & below slope by 35.0 Meters (114.83 Feet)							
Type	C/R	Latitude	Longitude	Name	Address	Lowest Elevation (m)	Runway Length (m)
AIRP	R	44-50-39.00N	087-24-49.00W	DOOR COUNTY CHERRYLAND	DOOR STURGEON BAY, WI	214.6	1401.8
Your Specifications							
NAD83 Coordinates							
Latitude						44-50-43.3 north	
Longitude						087-22-35.7 west	
Measurements (Meters)							
Overall Structure Height (AGL)						13	
Support Structure Height (AGL)						0	
Site Elevation (AMSL)						195	
Structure Type							
B - Building							