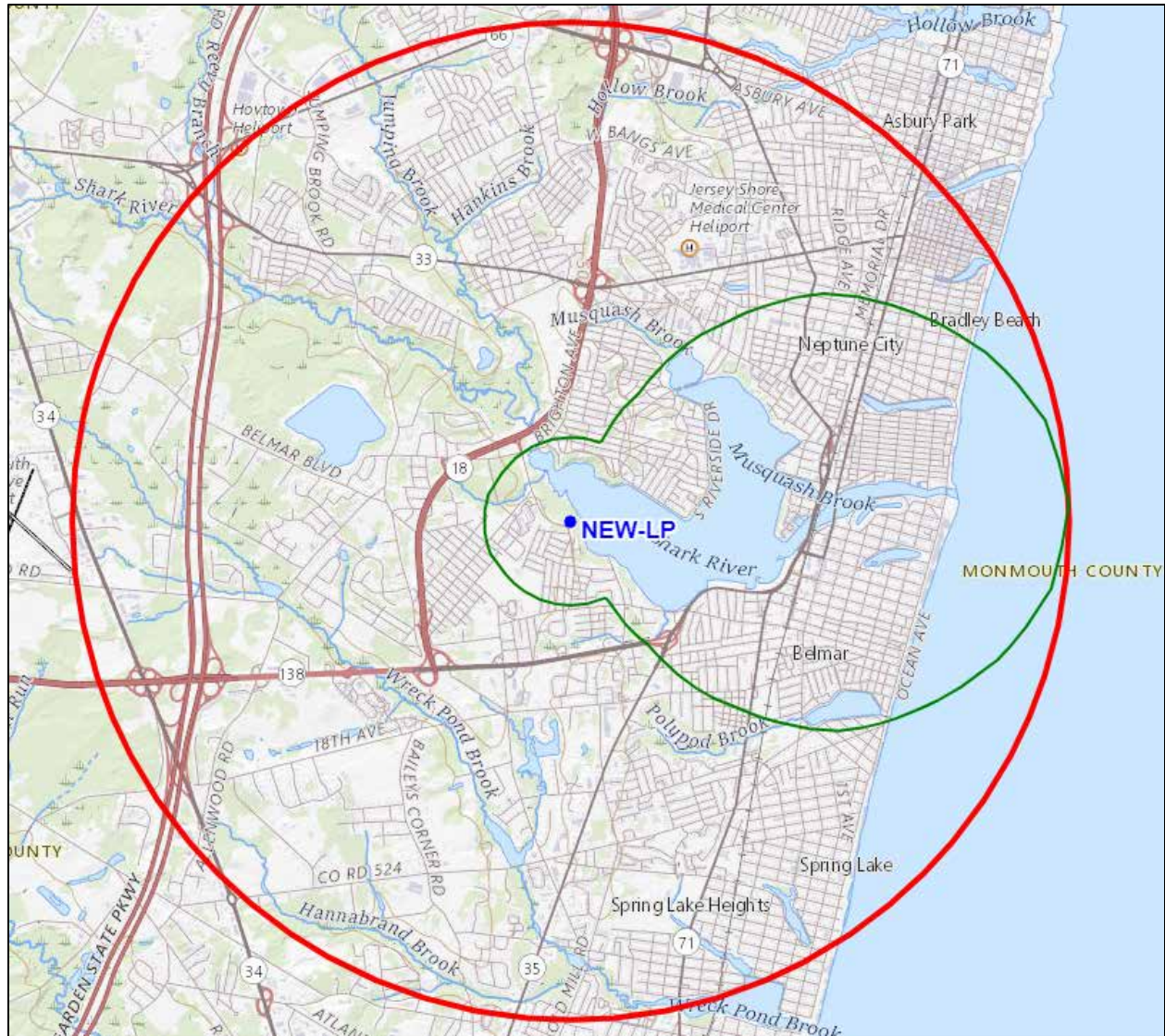




**REC Networks/Michelle Bradley CBT**  
11541 Riverton Wharf Rd.  
Mardela Springs, MD 21837  
844.REC.LPFM/202.621.2355  
recnet.com

Original Construction Permit Application  
WALL, NJ  
**THE INFORMATION AGE LEARNING CENTER**  
Facility ID: 788241

## PROPOSED 60dBu F(50,50) SERVICE CONTOUR



WALL, NJ ~ Channel 280LP100 (103.9 MHz) ~ ERP 0.067 kW (reduced power)  
Elev: 14.7 meters ~ RCAGL: 7.6 meters ~ RCAMSL: 22.3 meters ~ HAAT: 9 meters  
Overall tower height: 9.1 meters AGL ~ ASR: None (passes glide slope)  
NAD83 Latitude: 42° 50' 49.8" NL ~ Longitude: 70° 49' 08.0" WL  
No AM stations within 3 km.  
Elevation and HAAT based on NED1 data from FCC Contours API.  
New tower construction.  
Directional antenna to achieve second-adjacent channel waiver.

**THE INFORMATION AGE LEARNING CENTER**

New(LP)  
Wall, New Jersey  
Channel 280LP100 (103.9 MHz)

Distance separation	\$73.807	3
Second-adjacent Channel Waiver request	\$73.807	4
Educational Statement	\$73.503(a)	9
LPFM Point System factors	\$73.872	10
Demonstration of localism	\$73.853	11
Established Community Presence	\$73.872	11

*See separate PDF files in application package for:*

Evidence of Corporate Status	\$73.503
------------------------------	----------

R E C NETWORKS  
CHANNEL REPORT

NAD83 LATITUDE: 40 - 11' 04.9" - LONGITUDE: 74 - 03' 19.2"  
CHANNEL: 280 - CLASS: LP100

CHAN	FREQ	CALL	LOCATION	CLS	DIST	REQ	CLEAR	BEAR
277	103.3	WARM-FM : RADIO LICENSE HOLDING SRC LLC	YORK	PA B	217.6	0.0	217.6	266.1
277	103.3	WPLF :	SHELTER ISLAND	NY A	169.0	0.0	169.0	58.2
277	103.3	WPRB : PRINCETON BROADCASTING SERVICE, INC. * Does not meet third adjacent channel spacing under LCRA Sect 7.	PRINCETON	NJ B	54.8	0.0	54.8	281.6
277	103.3	NEW : RED WOLF BROADCASTING CORPORATIO	SHELTER ISLAND	NY A	166.0	0.0	166.0	57.9
277	103.3	WQQQ : WAMC, Inc.	SHARON	CT A	196.8	0.0	196.8	11.7
278	103.5	WKTU : IHM LICENSES, LLC > See waiver request	LAKE SUCCESS	NY B	62.9	67.0	-4.1	5.3
279	103.7	WNNJ : IHM LICENSES, LLC	NEWTON	NJ B1	126.5	74.0	52.5	331.8
279	103.7	WMGM : LONGPORT MEDIA, LLC	ATLANTIC CITY	NJ B	96.5	97.0	-0.5	203.9
280	103.9	WRCN-FM : JVC MEDIA LLC, A FLORIDA LLC COMPANY	RIVERHEAD	NY A	132.1	67.0	65.1	55.3
280	103.9	WPHI-FM : AUDACY LICENSE, LLC	JENKINTOWN	PA A	101.9	67.0	34.9	261.3
280	103.9	WBN : CUMULUS LICENSING LLC	BRONXVILLE	NY A	78.7	67.0	11.7	10.9
280	103.9	WOLD-LP : SRN COMMUNICATIONS, INC.	SOMERSET	NJ L1	48.4	24.0	24.4	312.7
280	103.9	WCNM : CANTICO NUEVO MINISTRY, INC.	HAZLET	NJ D	25.6	24.0	1.6	329.0
281	104.1	W281BI : IHM LICENSES, LLC	TRENTON	NJ D3	66.4	21.0	45.4	279.1
281	104.1	WAEB-FM : IHM LICENSES, LLC	ALLENTOWN	PA B	143.5	97.0	46.5	295.0
281	104.1	W281CK : Townsquare License, LLC	LAKEWOOD TOWNSHIP	NJ D6	35.6	28.0	7.6	195.2
281	104.1	W281CL : Ritmo Broadcasting, LLC	CHERRY HILL	NJ D4	76.8	21.0	55.8	248.9
282	104.3	WAXQ : IHM LICENSES, LLC > See waiver request	NEW YORK	NY B	62.9	67.0	-4.1	5.3
283	104.5	WRFF : IHM LICENSES, LLC	PHILADELPHIA	PA B	102.2	0.0	102.2	261.3

**REQUEST FOR WAIVER OF §73.807(a)**  
**SHORT-SPACED SECOND-ADJACENT CHANNEL**

New(LP)  
Wall, New Jersey  
Channel 280LP100 (103.9 MHz)

The instant application meets all §73.807 distance separation requirements with the exception of second-adjacent channel stations WKTU, Lake Success, New York and WAXQ, New York, New York. We address these shortcomings as set forth.

WKTU operates on Channel 278B and WAXQ operates on Channel 282B with identical technical parameters, 6 kW Effective Radiated Power (ERP) at 415 meters Height Above Average Terrain into a nondirectional antenna. Both WKTU and WAXQ place a 55.2 dBu service contour at the proposed LPFM site.

Using the U/D method<sup>1</sup>, the proposed LPFM station is predicted to produce an undesired interference overlap in respect to WKTU and WAXQ to the proposed LPFM station's 95.2 dBu interfering contour ("overlap zone"). At 100 watts ERP, this overlap zone extends to 1,219 meters from the base of the proposed tower site. There are many occupied structures within this overlap zone along various radials.

To address this overlap, the applicant can demonstrate protection to WERZ and WXKS-FM using the directional characteristics of the Kathrein Scala CL-FM horizontally polarized antenna at a rotation of 88 degrees and a **reduced ERP of 67 watts (0.067 kW)**.<sup>2</sup> Using the directional characteristics of the CL-FM antenna, the 95.2 dbu interfering contour remains entirely over water and unoccupied land area as noted in the contour map following.

As we have determined that the proposed facility will not cause any interference, the applicant is requesting a waiver of §73.807(a) in respect to WKTU, Lake Success, New York and WAXQ, New York, New York.

Prepared by,  
/S/  
Michelle Bradley, CBT  
REC Networks  
December 6, 2023

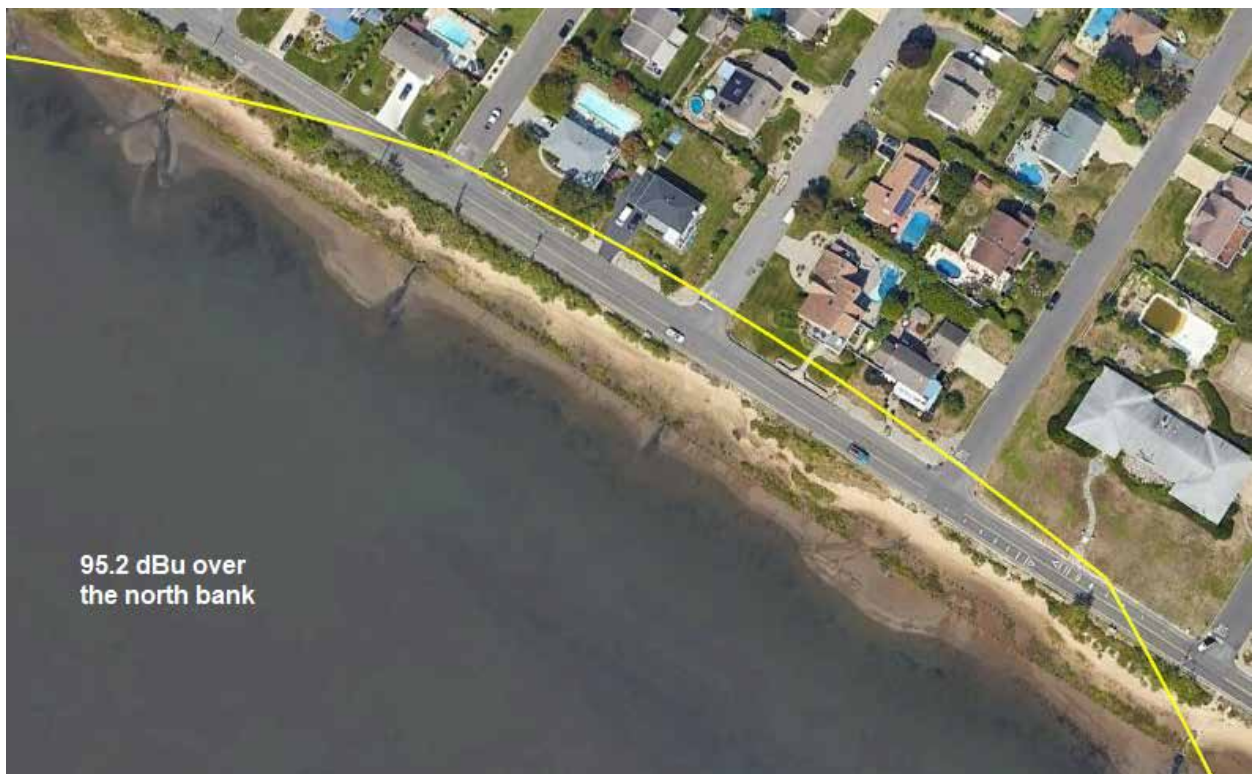
---

<sup>1</sup> See *Living Way Ministries, Inc.* Memorandum Opinion and Order, 17 FCC Rcd 17054, 17056 (2002) at 5. *Recon denied* 23 FCC Rcd 15070 (2008).

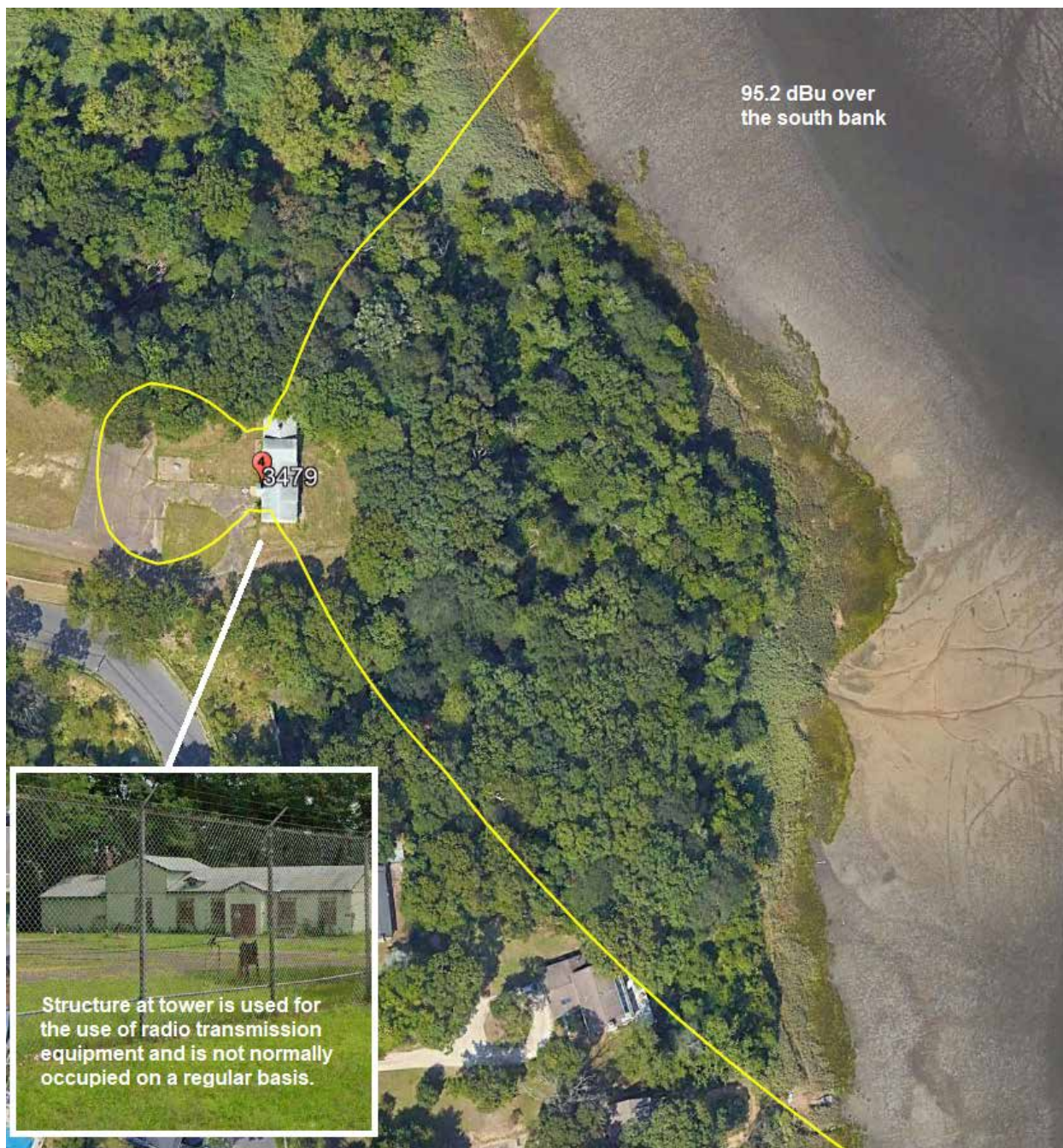
<sup>2</sup> An LPFM authorization in which the applicant proposed a directional antenna for the sole purpose of achieving a second-adjacent channel waiver is considered as a nondirectional authorization in respect to protection from FM translator modification applications; see *Creation of a Low Power Radio Service*, Sixth Report and Order, 27 FCC Rcd. 15402, 15430 (2012) ("*Sixth Order*"). Further, the use of a directional antenna by an LPFM station for the sole purpose of achieving a second-adjacent channel waiver does not require the applicant to provide the information identified in 47 C. F. R. §73.316(c) in respect to proof-of-performance as well as statements from the installer and a licensed surveyor; see 47 C. F. R. §73.816(d)(3). As such, the application is written as a nondirectional proposal in the tech box to assure that the LPFM facility is provided the protections that it is entitled to, pursuant to the *Sixth Order*.



Overlap Zone

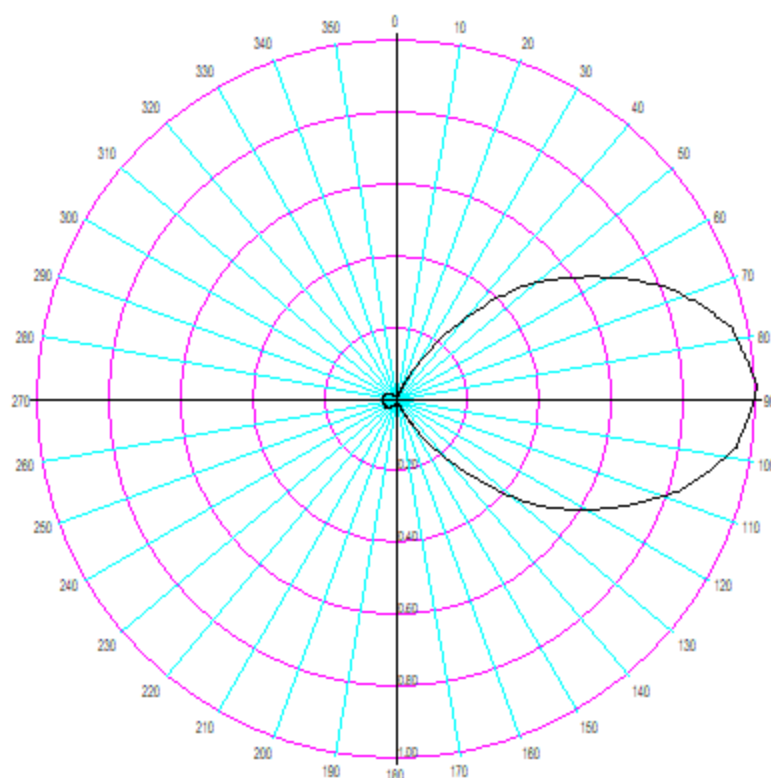






Short-spaced second-adjacent channel stations





Azim	Rcl.FS	ERP [W]	dBk	Azim	Rcl.FS	ERP [W]	dBk	Azim	Rcl.FS	ERP [W]	dBk	Azim	Rcl.FS	ERP [W]	dBk
0.0	0.010	0.007	-51.739	90.0	0.990	65.667	-11.827	180.0	0.010	0.007	-51.739	270.0	0.040	0.107	-39.698
5.0	0.010	0.007	-51.739	95.0	0.965	62.392	-12.049	185.0	0.010	0.007	-51.739	275.0	0.040	0.107	-39.698
10.0	0.012	0.010	-50.156	100.0	0.924	57.203	-12.426	190.0	0.010	0.007	-51.739	280.0	0.039	0.102	-39.918
15.0	0.017	0.019	-47.130	105.0	0.859	49.438	-13.059	195.0	0.010	0.007	-51.739	285.0	0.038	0.097	-40.144
20.0	0.033	0.073	-41.369	110.0	0.785	41.287	-13.842	200.0	0.011	0.008	-50.911	290.0	0.037	0.092	-40.375
25.0	0.065	0.283	-35.481	115.0	0.697	32.549	-14.875	205.0	0.013	0.011	-49.460	295.0	0.035	0.082	-40.858
30.0	0.118	0.933	-30.302	120.0	0.610	24.931	-16.093	210.0	0.017	0.019	-47.130	300.0	0.032	0.069	-41.636
35.0	0.200	2.680	-25.719	125.0	0.522	18.256	-17.386	215.0	0.022	0.032	-44.891	305.0	0.027	0.049	-43.112
40.0	0.294	5.791	-22.372	130.0	0.426	12.159	-19.151	220.0	0.026	0.045	-43.440	310.0	0.023	0.035	-44.505
45.0	0.404	10.935	-19.612	135.0	0.316	6.690	-21.746	225.0	0.031	0.064	-41.912	315.0	0.018	0.022	-46.634
50.0	0.505	17.087	-17.673	140.0	0.217	3.155	-25.010	230.0	0.034	0.077	-41.110	320.0	0.015	0.015	-48.217
55.0	0.592	23.481	-16.293	145.0	0.134	1.203	-29.197	235.0	0.036	0.087	-40.613	325.0	0.015	0.015	-48.217
60.0	0.680	30.981	-15.089	150.0	0.072	0.347	-34.593	240.0	0.038	0.097	-40.144	330.0	0.014	0.013	-48.817
65.0	0.767	39.415	-14.043	155.0	0.039	0.102	-39.918	245.0	0.039	0.102	-39.918	335.0	0.011	0.008	-50.911
70.0	0.846	47.953	-13.192	160.0	0.018	0.022	-46.634	250.0	0.040	0.107	-39.698	340.0	0.010	0.007	-51.739
75.0	0.911	55.605	-12.549	165.0	0.013	0.011	-49.460	255.0	0.040	0.107	-39.698	345.0	0.010	0.007	-51.739
80.0	0.960	61.747	-12.094	170.0	0.010	0.007	-51.739	260.0	0.040	0.107	-39.698	350.0	0.010	0.007	-51.739
85.0	0.985	65.005	-11.871	175.0	0.010	0.007	-51.739	265.0	0.040	0.107	-39.698	355.0	0.010	0.007	-51.739



## **EDUCATIONAL STATEMENT**

New(LP)  
Wall, New Jersey  
Channel 280LP100 (103.9 MHz)

INFORMATION AGE LEARNING CENTER (InfoAge) is a nonprofit corporation incorporated in 1999 and operated exclusively for the purpose of educating the public in the areas of technology, communications, engineering, and military history. To meet its mission, InfoAge volunteers are constantly creating new exhibits, multi-media content and activities to engage, enrich, and inspire learners, listeners, and content creators through local programming, student field experiences, and training in program production and media operations.

The Radio station will advance our educational program by providing a venue for both our educational activities and those of other community organizations.

Program examples:

- In their words: Verbal histories and commentary from Armed forces members, providing an opportunity for the community to learn about what happens from a soldier's perspective.
- Exit 98: A call in-show presenting the opinion of citizens of Belmar, Wall, and the surrounding communities on all things relevant.
- Clean up: content presented by the Shark River Cleanup coalition to provide education on the conditions of the Shark River Estuary, and the conservation efforts.

### LPFM POINT FACTORS

New(LP)  
Wall, New Jersey  
Channel 280LP100 (103.9 MHz)

County of transmitting antenna	Market Name	Market Rank
Monmouth, New Jersey	New York, NY	1

The proposed facility will claim 5 points as set forth:

Established Community Presence – 1 point

As the organization has been physically headquartered within 10 miles of the proposed transmitter site since September 10, 1998, the applicant is claiming the Established Community Presence point, pursuant to §73.872(b)(1).

Local Programming – 1 point

Applicant pledges to originate at least 8 hours of local programming, pursuant to Commission policies regarding the LPFM point system, pursuant to §73.872(b)(2).

Main Studio – 1 point

Applicant pledges to make available an accessible main studio, capable of program origination for a Applicant of 20 hours per week. Applicant claims the Main Studio point, pursuant to §73.872(b)(3).

Local Programming and Main Studio – 1 point

As both the Local Programming and Main Studio points are being claimed, the additional Local Programming and Main Studio "bonus" point is also claimed, pursuant to §73.872(b)(4).

Diversity of Ownership – 1 point

Applicant has no other attributable interests and therefore is eligible to claim the Diversity of Ownership point, pursuant to §73.872(b)(5) and Page 5 of the Second Window Notice.

Prepared by,

/S/  
Michelle Bradley, CBT  
REC Networks

December 6, 2023

**LOCALISM / ESTABLISHED COMMUNITY PRESENCE**

New(LP)  
Wall, New Jersey  
Channel 280LP100 (103.9 MHz)

Applicant is qualifying for localism and Established Community Presence by virtue of the organization's headquarters being on the same campus as the transmitting antenna and thus very well with 10 miles of each other.

A claim of Established Community Presence is further advanced through the included Articles of Incorporation showing that the organization's headquarters has been the same since 1998.