

WCQS
Mars Hill, North Carolina
Application for Noncommercial FM Station
Change of Community
On Channel 201 Class C3
by
Western North Carolina Public Radio, Inc.

Exhibit: Technical Compliance

October 2023

© 2023 Western North Carolina Public Radio, Inc.

Timothy L. Warner, P.E.
Post Office Box 8045
Asheville, North Carolina 28814-8045
(828) 258-1238
twarner@tlwinc.net

Table of Contents

Description	Page
Declaration	2
Narrative	3
No Change in Technical Facilities	3
Allocations	3
Table 1: Allocations	5
Source of Data	6
Nonionizing Radiofrequency Radiation Evaluation	7
Area and Population	8
Table 2: FMOVER protection of WCQR-FM, Kingsport, Tennessee	9
Table 3: FMOVER protection of WLXK, Boiling Springs, North Carolina	14
Table 4: FMOVER protection of WSBF-FM Clemson, South Carolina	19
Table 5: FMOVER protection of WJYJ Hickory, North Carolina	24
Allocation Study	Figure 1
Allocation Study: WCQR-FM	Figure 2
Allocation Study: WCQR-FM Detail	Figure 2A
Allocation Study: WLXK	Figure 3
Allocation Study: WLXK Detail	Figure 3A
Allocation Study: WSBF-FM	Figure 4
Allocation Study: WSBF-FM Detail	Figure 4A
Allocation Study: WJYJ	Figure 5
Antenna Pattern	Figure 6

Declaration

I declare, under penalty of perjury, that I am a technical consultant to broadcasting and other communications systems, that I have over twenty-five years of experience in the engineering of broadcast and other communications systems, that I am familiar with the Federal Communications Commission's Rules found in the Code of Federal Regulations Title 47, that I am a Professional Engineer registered in North Carolina, that I have prepared or supervised the preparation of the attached Exhibit: Technical Compliance, for Western North Carolina Public Radio, Inc., and that all of the facts therein, except for facts of which the Federal Communications Commission may take official notice, are true to the best of my knowledge and belief.



Timothy L. Warner, P.E.
Post Office Box 8045
Asheville, North Carolina 28801
(828) 258-1238
twarner@tlwinc.net
18 October 2023

Narrative

This Exhibit provides details of the allocations for the noncommercial FM facilities for WCQS at Mars Hill, North Carolina. This proposal complies fully with the requirements of 47 C.F.R. §73.509, with the exception of a waiver request to continue contour overlap with WNCW, Spindale, North Carolina. A separate Exhibit addresses the waiver. A separate Exhibit provides Section 307(b) analysis of the proposed change of community.

No Change in Technical Facilities

This application represents no change in technical facilities compared to the licensed facilities for WCQS. This application is filed to provide local service to Mars Hill, North Carolina, to replace local service provided by co-owned WYQS. A separate application is being filed to modify WYQS to specify Asheville, North Carolina, as its community of license.

Allocations

This application proposes service to Mars Hill, North Carolina, on channel 201 as a Class C3 facility. The Allocations Table in this exhibit provides a list of the stations, construction permits, allocations, and applications studied. All currently licensed facilities are protected from interference from the proposed facilities under 47 C.F.R. §73.509 by this application, with the exception of WNCW, Spindale, North Carolina, authorized under a waiver.

No change to the technical parameters of the licensed facilities is proposed.

Where there are facilities whose overlap is less than 3.2 kilometers (2 miles) allocation study figures are provided, along with the output tables from the computer program FMOVER. Four (4) facilities are identified below.

Figure/Table	Facility ID	Community	Channel and Relationship
2	WCQR-FM	Kingsport, Tennessee	202C2, first adjacent
3	WLXK	Boiling Springs, North Carolina	202C2, first adjacent
4	WSBF-FM	Clemson, South Carolina	201A, co-channel
5	WJYJ	Hickory, North Carolina	201C2, co-channel

To provide clarity, an additional detail maps are included as Figures 2A through 4A. The distances to the relevant contours are included in Tables 2 through 5, the FMOVER output.

Table 1: Allocations

Allocation Study											
Western North Carolina Public											
REFERENCE		CH# 201C3- 88.1 MHz, Pwr= 1.9 kW DA, HAAT= 359.5 M, COR= 1100 M								DISPLAY DATES	
35 35 23.3 N.		Average Protected F(50-50)= 39.3 km								DATA 10-18-23	
82 40 25.4 W.		Standard Directional								SEARCH 10-18-23	
CH	CALL	TYPE	ANT	AZI.	DIST	LAT.	Pwr(kw)	INT(km)	PRO(km)	*IN*	*OUT*
CITY		STATE		<--	FILE #	LNG.	HAAT(M)	COR(M)	LICENSEE	(Overlap in km)	
201C2	WCQS!	CP	DCN	0.0	0.00	35 35 23.30	5.000		---	Reference---	
Asheville			NC	0.0	0000160521	82 40 25.40	356	1100	Western North Carolina Pub		
Unbuilt Construction Permit.											
201C3	WCQS!	LIC	DCN	0.0	0.00	35 35 23.30	1.900		---	Reference---	
Asheville			NC	0.0	0000158308	82 40 25.40	356	1100	Western North Carolina Pub		
Licensed facility.											
6 --	WCES-TV-A	CHA	Y	172.1	261.53	38 28 33.30	7.900	64.4	300.2	364.6R	-103.1M
Wrens			GA	352.3	DTVBL23937	82 14 59.50	429	544			
06 2E	WCES-TV	LI	HN	172.1	261.55	38 28 33.30	7.900	64.4	300.0	364.4R	-102.8M
Wrens			GA	352.3	0000016506	82 14 59.50	426	541			
204C	WNCW	LIC	DCN	65.1	38.55	35 44 06.40	17.000	7.4	73.7	-10.3*	-37.9*
Spindale			NC	245.3	0000143612	82 17 10.40	926	2022	Isothermal Community College		
Continuation of present waiver requested in separate exhibit.											
202C2	WCQR-FM	LIC	DCN	27.1	105.26	36 25 53.30	1.200	56.8	36.9	4.1	0.1
Kingsport			TN	207.4	BLD19961120KB	82 08 15.40	650	1276	Positive Alternative Radio		
202C2	WLXK	LIC	DCN	114.4	95.52	35 13 52.40	50.000	47.1	28.4	7.0	0.1
Boiling Springs			NC	294.9	BLD19950221KD	81 42 56.40	92	343	Educational Media Foundation		
201A	WSBF-FM	LIC	CN	187.6	102.20	34 40 42.30	3.000	61.1	13.2	10.6	1.4
Clemson			SC	7.5	BLD19920327KB	82 49 14.50	61	307	Clemson University Board O		
201C2	WJYJ	LIC	DEN	83.3	138.69	35 43 34.50	26.500	96.8	27.2	2.3	3.5
Hickory			NC	264.2	BLD20011024AAG	81 08 51.30	77	372	Positive Alternative Radio		
201A	WUBK	LIC	CN	151.1	121.59	34 37 50.40	0.097	25.6	7.0	54.9	10.0
Enoree			SC	331.5	0000123248	82 01 52.40	59	267	Richburg Educational Broad		
202C2	WYLV	LIC	CN	292.3	123.34	36 00 13.10	2.850	73.3	48.4	12.5	21.3
Maynardville			TN	111.5	BLD20150515AAL	83 56 34.00	452	761	Educational Media Foundation		
201C2	762690	CP	DCN	335.1	148.74	36 48 05.00	3.000	68.5	22.1	37.8	17.3
Harlan			KY	154.7	0000166440	83 22 37.00	407	960	Torstrick Ministries, Inc.		
255C	WYRD-FM	LIC	CN	143.3	58.14	35 10 11.40	100.000	0.0	0.0	30.5R	27.6M
Spartanburg			SC	323.5	BLH20160511AAE	82 17 27.40	581	1016	Audacy License, LLC		
201C1	WUTC	LIC	CN	260.6	240.08	35 12 26.20	30.000	157.8	67.5	50.0	87.2
Chattanooga			TN	79.0	BLD19931130KA	85 16 51.80	271	673	University Of Tennessee		

Terrain database is GLOBE 30 Sec, R= 73.215 qualifying spacings or FCC minimum spacings in KM, M= Margin in KM
 In & Out distances between contours are shown at closest points. Reference Zone= - ZN2, Co to 3rd adjacent.
 All separation margins (if shown) include rounding. Call signs with exclamation marks need not be protected.
 Ant Column: (D= DA Standard, Z= DA 73.215, N= Not DA 73.215, _= Omni), Polarization (C,H,V,E), Beamtilt(Y,N,X)
 "*"affixed to 'IN' or 'OUT' values = site inside restricted contour.
 = Station meets FCC minimum distance spacing for its class.

Source of Data

Transmitter location, effective radiated power, directional antenna pattern, and elevation data are extracted from the Commission's LMS. All contours for existing and proposed facilities are calculated using height above average terrain calculated at one degree horizontal increments. All contours for existing and proposed facilities are calculated using height above average terrain calculated at one degree horizontal increments. The contours were evaluated using terrain extracted from the GLOBE 30 arcsecond terrain database, formatted by V-Soft Communications to work with its allocation and mapping programs.

Population data is from 2020 U.S. Census data files. Population is counted by considering the location of the centroid of each census block. The data for each block is counted if it falls within the area being counted.

Nonionizing Radiofrequency Radiation Evaluation

The potential for nonionizing radiofrequency radiation at the site was evaluated, summing the horizontal and vertical ERP for the licensed facility. Using the worst case procedures in OET-65, the power density at 2 meters above ground at the tower base would not exceed 0.22 milliwatts per square centimeter, which is 110% of the Uncontrolled/General Population limit. FMModel produces a peak value of 23.3 microwatts per square centimeter at 45 meters from the tower base, or less than 12% of the Uncontrolled/General Population limit, using the licensed ERP, and a two bay “rototiller” half wave spaced antenna.

No change is proposed in the technical parameters of the licensed facility.

Area and Population

The area within the proposed 60 dBu F(50,50) service contour is calculated by a computer program which sums the areas within the contours based on 360 radials. The area is shown on Figure 1 of this Exhibit, and presented below. The population is calculated by the centroid method and is also listed on the Figure and presented below. As required, the 2020 US Census data is used.

Population Database: 2020 US Census (PL)
Total Population: 433,280
Total Area: 4,592.8 sq. km

Table 2: FMOVER protection of WCQR-FM, Kingsport, Tennessee

10-18-2023 Terrain Data: GLOBE 30 Sec FMOVER Analysis

WCQS

WCQR-FM BLED19961120KB

Channel = 201C3
 Max ERP = 1.9 kW
 RCAMSL = 1100 m
 N. Lat. 35 35 23.30
 W. Lng. 82 40 25.40
 Protected
 60 dBu

Channel = 202C2
 Max ERP = 1.2 kW
 RCAMSL = 1276 m
 N. Lat. 36 25 53.30
 W. Lng. 82 08 15.40
 Interfering
 54 dBu

Azimuth (degrees)	ERP (kW)	HAAT (m)	Dist (km)	Azimuth (degrees)	ERP (kW)	HAAT (m)	Dist (km)	Actual (dBu)	IX (km)
327.0	001.9000	0398.3	041.1	230.2	000.3775	0638.9	092.0	42.61	
328.0	001.9000	0397.4	041.1	230.1	000.3770	0638.8	091.3	42.82	
329.0	001.9000	0398.1	041.1	230.1	000.3767	0638.6	090.5	43.04	
330.0	001.9000	0402.4	041.3	230.1	000.3770	0638.7	089.8	43.27	
331.0	001.9000	0411.4	041.7	230.3	000.3779	0639.1	089.0	43.54	
332.0	001.9000	0419.9	042.1	230.4	000.3787	0639.5	088.2	43.80	
333.0	001.9000	0424.9	042.3	230.5	000.3790	0639.6	087.5	44.05	
334.0	001.9000	0426.0	042.4	230.4	000.3786	0639.4	086.7	44.28	
335.0	001.9000	0426.5	042.4	230.3	000.3780	0639.2	086.0	44.50	
336.0	001.9000	0427.3	042.4	230.2	000.3774	0638.9	085.3	44.72	
337.0	001.9000	0428.7	042.5	230.1	000.3768	0638.7	084.5	44.94	
338.0	001.9000	0430.5	042.6	230.0	000.3763	0638.5	083.8	45.16	
339.0	001.9000	0432.4	042.7	229.9	000.3760	0638.2	083.1	45.39	
340.0	001.9000	0433.9	042.7	229.8	000.3757	0637.9	082.4	45.61	
341.0	001.9000	0435.0	042.8	229.6	000.3753	0637.5	081.6	45.83	
342.0	001.9000	0435.8	042.8	229.4	000.3748	0637.0	080.9	46.04	
343.0	001.9000	0437.2	042.9	229.3	000.3743	0636.6	080.2	46.25	
344.0	001.9000	0439.8	043.0	229.1	000.3740	0636.4	079.5	46.47	
345.0	001.9000	0443.4	043.2	229.0	000.3736	0636.2	078.7	46.70	
346.0	001.9000	0445.9	043.3	228.8	000.3732	0635.9	078.0	46.92	
347.0	001.9000	0446.4	043.3	228.6	000.3725	0635.5	077.3	47.12	
348.0	001.9000	0448.1	043.4	228.4	000.3719	0635.0	076.6	47.33	
349.0	001.9000	0450.8	043.5	228.1	000.3714	0634.6	075.9	47.54	
350.0	001.9000	0453.6	043.7	227.9	000.3708	0634.3	075.2	47.76	
351.0	001.9000	0455.0	043.7	227.7	000.3700	0633.9	074.5	47.96	
352.0	001.9000	0455.8	043.8	227.3	000.3692	0633.7	073.9	48.15	
353.0	001.9000	0456.7	043.8	227.0	000.3684	0633.4	073.2	48.34	
354.0	001.9000	0456.3	043.8	226.7	000.3674	0633.5	072.6	48.52	
355.0	001.9000	0456.7	043.8	226.3	000.3664	0633.6	072.0	48.70	
356.0	001.9000	0457.6	043.9	225.9	000.3655	0633.8	071.4	48.89	
357.0	001.9000	0457.8	043.9	225.5	000.3644	0634.0	070.8	49.07	
358.0	001.9000	0458.8	043.9	225.1	000.3634	0634.3	070.2	49.25	
359.0	001.9000	0462.4	044.1	224.8	000.3625	0634.4	069.5	49.46	
000.0	001.9000	0466.7	044.3	224.5	000.3616	0634.5	068.8	49.67	
001.0	001.8962	0470.7	044.5	224.1	000.3606	0634.8	068.2	49.87	
002.0	001.8924	0466.8	044.3	223.5	000.3591	0635.3	067.8	49.98	
003.0	001.8886	0462.7	044.1	222.9	000.3574	0635.6	067.5	50.07	
004.0	001.8848	0459.3	043.9	222.3	000.3559	0636.1	067.1	50.17	
005.0	001.8810	0459.8	043.9	221.8	000.3545	0636.9	066.7	50.31	
006.0	001.8773	0460.6	043.9	221.2	000.3531	0637.7	066.2	50.45	
007.0	001.8735	0460.2	043.9	220.7	000.3516	0639.1	065.8	50.58	

008.0	001.8697	0460.3	043.9		220.1	000.3502	0641.1	065.4	50.72
009.0	001.8660	0461.9	043.9		219.5	000.3487	0643.1	065.0	50.87
010.0	001.8622	0464.7	044.0		219.0	000.3473	0645.3	064.5	51.04
011.0	001.8622	0465.6	044.1		218.4	000.3458	0647.8	064.1	51.19
012.0	001.8622	0465.3	044.1		217.8	000.3442	0650.2	063.8	51.31
013.0	001.8584	0463.7	044.0		217.1	000.3425	0652.8	063.5	51.39
014.0	001.8584	0461.6	043.9		216.5	000.3408	0655.3	063.3	51.47
015.0	001.8584	0459.4	043.8		215.8	000.3391	0657.7	063.1	51.54
016.0	001.8584	0458.3	043.7		215.1	000.3373	0659.9	062.9	51.62
017.0	001.8584	0459.2	043.8		214.5	000.3357	0661.7	062.7	51.71
018.0	001.8547	0462.1	043.9		213.8	000.3341	0663.1	062.3	51.82
019.0	001.8547	0465.8	044.1		213.2	000.3324	0664.0	062.0	51.94
020.0	001.8547	0468.2	044.2		212.5	000.3307	0664.8	061.7	52.02
021.0	001.8584	0468.8	044.2		211.8	000.3290	0665.6	061.5	52.08
022.0	001.8622	0468.9	044.2		211.1	000.3272	0666.5	061.3	52.12
023.0	001.8660	0469.7	044.3		210.4	000.3255	0667.6	061.2	52.17
024.0	001.8697	0471.2	044.4		209.7	000.3245	0668.9	061.0	52.23
025.0	001.8735	0472.2	044.5		209.0	000.3245	0670.9	060.8	52.30
026.0	001.8810	0472.3	044.5		208.2	000.3245	0673.9	060.8	52.37
027.0	001.8848	0471.7	044.5		207.5	000.3245	0677.9	060.8	52.42
028.0	001.8886	0471.3	044.5		206.8	000.3245	0682.6	060.8	52.48
029.0	001.8924	0471.1	044.5		206.0	000.3245	0687.5	060.8	52.53
030.0	001.8962	0470.1	044.5		205.3	000.3245	0692.1	060.9	52.56
031.0	001.8962	0467.9	044.4		204.6	000.3245	0695.8	061.1	52.54
032.0	001.8962	0465.1	044.2		203.9	000.3245	0699.0	061.3	52.50
033.0	001.8962	0463.0	044.1		203.2	000.3245	0701.8	061.5	52.46
034.0	001.8962	0462.1	044.1		202.5	000.3245	0704.3	061.7	52.43
035.0	001.9000	0462.4	044.1		201.8	000.3245	0706.4	061.9	52.41
036.0	001.9000	0462.9	044.1		201.1	000.3245	0706.8	062.0	52.36
037.0	001.9000	0463.4	044.2		200.4	000.3245	0706.0	062.2	52.29
038.0	001.9000	0463.0	044.1		199.7	000.3251	0703.8	062.5	52.18
039.0	001.9000	0461.1	044.0		199.1	000.3267	0701.6	062.8	52.06
040.0	001.9000	0458.0	043.9		198.5	000.3282	0700.0	063.2	51.92
041.0	001.9000	0454.9	043.7		197.9	000.3297	0698.4	063.7	51.78
042.0	001.9000	0452.0	043.6		197.3	000.3311	0696.6	064.1	51.63
043.0	001.9000	0448.9	043.5		196.8	000.3325	0694.5	064.6	51.47
044.0	001.9000	0445.3	043.3		196.3	000.3339	0691.9	065.1	51.29
045.0	001.9000	0441.6	043.1		195.8	000.3351	0689.1	065.6	51.11
046.0	001.9000	0437.7	042.9		195.3	000.3364	0686.3	066.1	50.91
047.0	001.9000	0433.1	042.7		194.8	000.3375	0683.3	066.7	50.71
048.0	001.9000	0427.9	042.5		194.4	000.3386	0680.2	067.3	50.48
049.0	001.9000	0423.5	042.2		194.0	000.3396	0676.9	067.9	50.27
050.0	001.9000	0421.4	042.2		193.6	000.3408	0673.4	068.4	50.07
051.0	001.9000	0421.2	042.1		193.1	000.3420	0670.2	068.9	49.90
052.0	001.9000	0420.6	042.1		192.6	000.3432	0667.8	069.4	49.73
053.0	001.9000	0417.9	042.0		192.2	000.3442	0666.2	069.9	49.54
054.0	001.9000	0413.0	041.8		191.9	000.3450	0665.2	070.6	49.34
055.0	001.9000	0407.0	041.5		191.6	000.3457	0664.3	071.3	49.12
056.0	001.9000	0400.1	041.2		191.4	000.3464	0663.5	072.0	48.89
057.0	001.9000	0392.7	040.9		191.2	000.3469	0662.8	072.8	48.65
058.0	001.9000	0385.0	040.5		191.0	000.3474	0662.0	073.5	48.41
059.0	001.9000	0378.5	040.2		190.8	000.3479	0661.0	074.2	48.18
060.0	001.9000	0375.3	040.1		190.5	000.3486	0659.3	074.8	47.98
061.0	001.9000	0376.4	040.1		190.1	000.3496	0656.9	075.4	47.79
062.0	001.9000	0380.8	040.3		189.7	000.3507	0654.2	075.8	47.63
063.0	001.9000	0387.4	040.6		189.2	000.3520	0651.0	076.2	47.48
064.0	001.9000	0396.1	041.0		188.7	000.3534	0647.7	076.5	47.33
065.0	001.9000	0405.3	041.4		188.1	000.3549	0645.1	076.9	47.19
066.0	001.9000	0413.2	041.8		187.6	000.3562	0643.5	077.3	47.05
067.0	001.9000	0417.6	042.0		187.2	000.3572	0642.4	077.9	46.88
068.0	001.9000	0416.0	041.9		187.0	000.3578	0641.8	078.5	46.67
069.0	001.9000	0410.8	041.7		186.9	000.3581	0641.5	079.3	46.43
070.0	001.9000	0403.6	041.3		186.9	000.3581	0641.4	080.1	46.18

071.0	001.8962	0397.4	041.0		186.8	000.3582	0641.3	080.9	45.93
072.0	001.8962	0391.1	040.8		186.8	000.3583	0641.2	081.6	45.69
073.0	001.8924	0383.3	040.4		186.8	000.3582	0641.3	082.4	45.44
074.0	001.8886	0374.5	040.0		186.9	000.3581	0641.5	083.2	45.18
075.0	001.8886	0366.5	039.6		186.9	000.3579	0641.7	084.0	44.93
076.0	001.8848	0361.7	039.4		186.9	000.3580	0641.6	084.7	44.70
077.0	001.8810	0363.2	039.4		186.7	000.3585	0641.0	085.4	44.50
078.0	001.8773	0368.3	039.7		186.4	000.3592	0640.1	085.9	44.31
079.0	001.8773	0374.4	039.9		186.1	000.3601	0639.1	086.5	44.12
080.0	001.8735	0381.1	040.2		185.8	000.3609	0638.9	087.1	43.93
081.0	001.8697	0386.2	040.4		185.6	000.3615	0639.7	087.7	43.75
082.0	001.8622	0391.0	040.6		185.3	000.3621	0640.9	088.4	43.58
083.0	001.8584	0396.1	040.8		185.1	000.3627	0642.3	089.0	43.40
084.0	001.8509	0401.2	041.0		184.9	000.3633	0643.5	089.7	43.22
085.0	001.8472	0407.6	041.3		184.7	000.3639	0644.8	090.4	43.04
086.0	001.8434	0413.5	041.5		184.4	000.3645	0645.8	091.0	42.85

10-18-2023 Terrain Data: GLOBE 30 Sec FMOver Analysis

WCQR-FM BLED19961120KB

WCQS

Channel = 202C2
 Max ERP = 1.2 kW
 RCAMSL = 1276 m
 N. Lat. 36 25 53.30
 W. Lng. 82 08 15.40
 Protected
 60 dBu

Channel = 201C3
 Max ERP = 1.9 kW
 RCAMSL = 1100 m
 N. Lat. 35 35 23.30
 W. Lng. 82 40 25.40
 Interfering
 54 dBu

Azimuth (degrees)	ERP (kW)	HAAT (m)	Dist (km)		Azimuth (degrees)	ERP (kW)	HAAT (m)	Dist (km)	Actual (dBu)	IX (km)

147.0	000.6625	0584.3	040.3		049.4	001.9000	0422.4	092.3	44.60	
148.0	000.6430	0585.3	040.0		049.2	001.9000	0422.9	091.6	44.82	
149.0	000.6238	0586.5	039.8		049.0	001.9000	0423.6	091.0	45.05	
150.0	000.6049	0586.1	039.5		048.7	001.9000	0424.5	090.3	45.28	
151.0	000.5931	0582.6	039.2		048.5	001.9000	0425.7	089.7	45.52	
152.0	000.5813	0577.2	038.8		048.1	001.9000	0427.2	089.2	45.76	
153.0	000.5697	0574.4	038.6		047.8	001.9000	0428.7	088.6	46.00	
154.0	000.5581	0576.1	038.5		047.7	001.9000	0429.7	087.9	46.23	
155.0	000.5467	0580.8	038.4		047.5	001.9000	0430.4	087.3	46.46	
156.0	000.5355	0585.8	038.4		047.4	001.9000	0431.2	086.7	46.70	
157.0	000.5243	0590.6	038.4		047.2	001.9000	0432.0	086.0	46.93	
158.0	000.5133	0592.8	038.3		047.0	001.9000	0433.1	085.5	47.16	
159.0	000.5023	0588.5	038.0		046.6	001.9000	0434.9	085.0	47.38	
160.0	000.4915	0582.1	037.5		046.2	001.9000	0436.9	084.5	47.58	
161.0	000.4839	0579.9	037.3		045.9	001.9000	0438.2	084.0	47.79	
162.0	000.4763	0586.5	037.4		045.7	001.9000	0438.7	083.4	48.01	
163.0	000.4688	0598.7	037.7		045.7	001.9000	0438.8	082.7	48.25	
164.0	000.4613	0610.3	037.9		045.6	001.9000	0439.1	082.0	48.48	
165.0	000.4539	0620.6	038.1		045.5	001.9000	0439.5	081.3	48.71	
166.0	000.4465	0630.5	038.3		045.4	001.9000	0440.0	080.6	48.94	
167.0	000.4392	0639.7	038.4		045.2	001.9000	0440.6	080.0	49.17	
168.0	000.4320	0645.6	038.5		045.0	001.9000	0441.5	079.4	49.39	
169.0	000.4248	0646.4	038.3		044.7	001.9000	0442.8	078.9	49.59	
170.0	000.4177	0649.7	038.3		044.4	001.9000	0444.0	078.4	49.79	
171.0	000.4135	0657.0	038.4		044.2	001.9000	0444.7	077.8	50.02	
172.0	000.4093	0665.2	038.6		044.0	001.9000	0445.5	077.1	50.25	
173.0	000.4051	0668.6	038.6		043.6	001.9000	0446.6	076.6	50.45	

174.0	000.4009	0663.1	038.3		043.2	001.9000	0448.3	076.3	50.61
175.0	000.3967	0653.6	037.9		042.6	001.9000	0450.2	076.0	50.74
176.0	000.3926	0641.8	037.5		042.0	001.9000	0451.9	075.8	50.84
177.0	000.3885	0640.6	037.3		041.6	001.9000	0453.1	075.5	51.00
178.0	000.3844	0642.1	037.3		041.2	001.9000	0454.2	075.0	51.17
179.0	000.3804	0643.6	037.2		040.8	001.9000	0455.4	074.6	51.33
180.0	000.3763	0645.0	037.2		040.4	001.9000	0456.7	074.2	51.50
181.0	000.3736	0646.7	037.2		040.1	001.9000	0457.9	073.8	51.66
182.0	000.3710	0648.3	037.2		039.6	001.9000	0459.1	073.4	51.83
183.0	000.3683	0649.6	037.1		039.2	001.9000	0460.4	073.1	51.98
184.0	000.3656	0647.3	037.0		038.8	001.9000	0461.7	072.8	52.11
185.0	000.3630	0642.9	036.8		038.3	001.9000	0462.7	072.6	52.20
186.0	000.3604	0638.9	036.6		037.7	001.9000	0463.2	072.4	52.27
187.0	000.3577	0641.9	036.7		037.3	001.9000	0463.4	072.1	52.40
188.0	000.3551	0644.7	036.7		036.9	001.9000	0463.4	071.7	52.51
189.0	000.3525	0649.7	036.8		036.5	001.9000	0463.2	071.3	52.63
190.0	000.3499	0656.1	036.9		036.1	001.9000	0463.0	070.9	52.76
191.0	000.3473	0662.1	037.0		035.6	001.9000	0462.7	070.5	52.88
192.0	000.3448	0665.5	037.1		035.2	001.9000	0462.5	070.2	52.97
193.0	000.3422	0669.8	037.1		034.7	001.8988	0462.2	069.9	53.06
194.0	000.3396	0676.9	037.3		034.2	001.8971	0462.1	069.6	53.18
195.0	000.3371	0684.5	037.4		033.8	001.8962	0462.1	069.2	53.31
196.0	000.3345	0690.4	037.5		033.3	001.8962	0462.6	068.9	53.42
197.0	000.3320	0695.3	037.6		032.8	001.8962	0463.3	068.6	53.53
198.0	000.3295	0698.7	037.7		032.3	001.8962	0464.4	068.4	53.63
199.0	000.3270	0701.2	037.7		031.7	001.8962	0465.9	068.2	53.72
200.0	000.3245	0704.8	037.7		031.2	001.8962	0467.3	068.1	53.82
201.0	000.3245	0706.7	037.8		030.7	001.8962	0468.8	067.9	53.91
202.0	000.3245	0705.9	037.7		030.1	001.8962	0469.9	067.8	53.97
203.0	000.3245	0702.4	037.6		029.6	001.8945	0470.7	067.8	53.98
204.0	000.3245	0698.5	037.5		029.0	001.8924	0471.1	067.9	53.97
205.0	000.3245	0693.7	037.4		028.4	001.8903	0471.2	068.0	53.94
206.0	000.3245	0687.7	037.2		027.9	001.8881	0471.3	068.1	53.89
207.0	000.3245	0681.0	037.0		027.3	001.8861	0471.4	068.3	53.82
208.0	000.3245	0675.0	036.8		026.8	001.8840	0471.8	068.5	53.77
209.0	000.3245	0670.7	036.7		026.3	001.8820	0472.2	068.6	53.72
210.0	000.3245	0668.3	036.6		025.7	001.8790	0472.4	068.7	53.69
211.0	000.3270	0666.6	036.6		025.2	001.8750	0472.4	068.8	53.66
212.0	000.3295	0665.4	036.6		024.7	001.8722	0472.0	068.8	53.64
213.0	000.3320	0664.3	036.7		024.1	001.8702	0471.4	068.9	53.60
214.0	000.3345	0662.7	036.7		023.6	001.8682	0470.6	068.9	53.54
215.0	000.3371	0660.2	036.7		023.1	001.8663	0469.8	069.1	53.48
216.0	000.3396	0656.9	036.7		022.6	001.8643	0469.2	069.2	53.40
217.0	000.3422	0653.3	036.6		022.1	001.8624	0468.9	069.4	53.32
218.0	000.3448	0649.4	036.6		021.6	001.8606	0468.8	069.7	53.24
219.0	000.3473	0645.3	036.5		021.1	001.8587	0468.8	069.9	53.16
220.0	000.3499	0641.4	036.4		020.6	001.8569	0468.8	070.2	53.07
221.0	000.3525	0638.2	036.4		020.1	001.8551	0468.4	070.4	52.97
222.0	000.3551	0636.5	036.4		019.6	001.8547	0467.6	070.6	52.88
223.0	000.3577	0635.6	036.5		019.2	001.8547	0466.3	070.8	52.77
224.0	000.3604	0634.9	036.5		018.7	001.8547	0464.7	071.1	52.66
225.0	000.3630	0634.4	036.5		018.2	001.8547	0462.8	071.3	52.53
226.0	000.3656	0633.8	036.6		017.7	001.8557	0461.1	071.5	52.41
227.0	000.3683	0633.4	036.6		017.3	001.8575	0459.8	071.8	52.29
228.0	000.3710	0634.4	036.7		016.8	001.8584	0458.9	072.0	52.19
229.0	000.3736	0636.2	036.9		016.3	001.8584	0458.4	072.3	52.10
230.0	000.3763	0638.5	037.0		015.8	001.8584	0458.4	072.5	52.02
231.0	000.3817	0641.1	037.2		015.3	001.8584	0458.9	072.7	51.97
232.0	000.3871	0644.5	037.4		014.8	001.8584	0459.9	072.9	51.93
233.0	000.3926	0648.0	037.7		014.2	001.8584	0461.1	073.1	51.89
234.0	000.3981	0652.1	037.9		013.7	001.8584	0462.2	073.3	51.85
235.0	000.4037	0655.7	038.2		013.2	001.8584	0463.3	073.6	51.79
236.0	000.4093	0658.5	038.4		012.7	001.8595	0464.3	073.9	51.73

237.0	000.4149	0660.2	038.5		012.2	001.8613	0465.0	074.2	51.64
238.0	000.4206	0663.1	038.8		011.8	001.8622	0465.5	074.6	51.55
239.0	000.4263	0668.6	039.1		011.2	001.8622	0465.6	074.8	51.45
240.0	000.4320	0677.2	039.5		010.7	001.8622	0465.4	075.1	51.37
241.0	000.4451	0685.9	040.0		010.0	001.8622	0464.7	075.3	51.29
242.0	000.4583	0692.2	040.5		009.4	001.8645	0463.0	075.5	51.17
243.0	000.4718	0696.0	040.9		008.8	001.8666	0461.5	075.9	51.02
244.0	000.4854	0698.9	041.2		008.3	001.8686	0460.6	076.2	50.88
245.0	000.4992	0701.7	041.6		007.8	001.8705	0460.1	076.6	50.74
246.0	000.5133	0704.0	041.9		007.3	001.8724	0459.9	077.1	50.60
247.0	000.5275	0706.8	042.2		006.8	001.8743	0460.5	077.5	50.47
248.0	000.5419	0710.0	042.6		006.3	001.8761	0460.9	078.0	50.33
249.0	000.5565	0714.2	043.0		005.8	001.8780	0460.4	078.5	50.16
250.0	000.5713	0719.2	043.4		005.3	001.8800	0460.0	079.0	50.00
251.0	000.5897	0724.3	043.8		004.8	001.8820	0459.6	079.5	49.83
252.0	000.6083	0727.8	044.2		004.3	001.8838	0459.4	080.0	49.65
253.0	000.6273	0729.9	044.6		003.8	001.8855	0459.4	080.6	49.47
254.0	000.6465	0731.7	044.9		003.4	001.8871	0460.8	081.2	49.31
255.0	000.6660	0733.3	045.3		003.0	001.8886	0462.6	081.9	49.16
256.0	000.6858	0735.5	045.6		002.6	001.8901	0464.3	082.5	49.00
257.0	000.7059	0737.5	046.0		002.2	001.8916	0465.9	083.2	48.83
258.0	000.7263	0739.6	046.3		001.9	001.8930	0467.4	083.9	48.65
259.0	000.7470	0741.1	046.6		001.5	001.8942	0468.9	084.6	48.46
260.0	000.7680	0743.4	047.0		001.2	001.8955	0470.3	085.3	48.27
261.0	000.8069	0745.1	047.5		000.7	001.8973	0469.7	086.0	48.03
262.0	000.8467	0747.5	048.0		000.3	001.8990	0467.9	086.8	47.75
263.0	000.8875	0750.3	048.6		359.8	001.9000	0466.0	087.5	47.46
264.0	000.9293	0752.7	049.1		359.4	001.9000	0464.3	088.3	47.17
265.0	000.9720	0755.2	049.6		359.1	001.9000	0462.7	089.1	46.87
266.0	001.0157	0758.4	050.1		358.7	001.9000	0461.1	090.0	46.56

-----|-----

Table 3: FMOVER protection of WLXK, Boiling Springs, North Carolina

10-18-2023 Terrain Data: GLOBE 30 Sec FMOVER Analysis

WCQS

WLXK BLED19950221KD

Channel = 201C3
 Max ERP = 1.9 kW
 RCAMSL = 1100 m
 N. Lat. 35 35 23.30
 W. Lng. 82 40 25.40
 Protected
 60 dBu

Channel = 202C2
 Max ERP = 50 kW
 RCAMSL = 343 m
 N. Lat. 35 13 52.40
 W. Lng. 81 42 56.40
 Interfering
 54 dBu

Azimuth (degrees)	ERP (kW)	HAAT (m)	Dist (km)	Azimuth (degrees)	ERP (kW)	HAAT (m)	Dist (km)	Actual (dBu)	IX (km)
054.0	001.9000	0413.0	041.8	320.8	009.6749	0069.9	083.2	41.53	
055.0	001.9000	0407.0	041.5	320.6	009.6268	0070.3	082.5	41.71	
056.0	001.9000	0400.1	041.2	320.3	009.5713	0070.8	081.8	41.89	
057.0	001.9000	0392.7	040.9	320.0	009.5106	0071.5	081.2	42.07	
058.0	001.9000	0385.0	040.5	319.7	009.4689	0072.2	080.5	42.26	
059.0	001.9000	0378.5	040.2	319.4	009.4334	0072.9	079.9	42.45	
060.0	001.9000	0375.3	040.1	319.2	009.4091	0073.4	079.2	42.64	
061.0	001.9000	0376.4	040.1	319.2	009.4002	0073.5	078.5	42.82	
062.0	001.9000	0380.8	040.3	319.2	009.4032	0073.5	077.8	43.01	
063.0	001.9000	0387.4	040.6	319.3	009.4134	0073.3	077.0	43.21	
064.0	001.9000	0396.1	041.0	319.4	009.4315	0072.9	076.2	43.40	
065.0	001.9000	0405.3	041.4	319.6	009.4511	0072.6	075.4	43.60	
066.0	001.9000	0413.2	041.8	319.7	009.4643	0072.3	074.6	43.80	
067.0	001.9000	0417.6	042.0	319.7	009.4619	0072.4	073.9	44.01	
068.0	001.9000	0416.0	041.9	319.4	009.4321	0072.9	073.2	44.21	
069.0	001.9000	0410.8	041.7	319.1	009.3855	0073.8	072.6	44.40	
070.0	001.9000	0403.6	041.3	318.6	009.3292	0074.8	072.0	44.58	
071.0	001.8962	0397.4	041.0	318.2	009.2747	0075.8	071.5	44.77	
072.0	001.8962	0391.1	040.8	317.7	009.2197	0076.7	071.0	44.94	
073.0	001.8924	0383.3	040.4	317.2	009.1564	0077.5	070.5	45.10	
074.0	001.8886	0374.5	040.0	316.7	009.0877	0078.1	070.0	45.22	
075.0	001.8886	0366.5	039.6	316.1	009.0213	0078.4	069.6	45.32	
076.0	001.8848	0361.7	039.4	315.7	008.9644	0078.2	069.1	45.42	
077.0	001.8810	0363.2	039.4	315.4	008.9323	0078.0	068.5	45.56	
078.0	001.8773	0368.3	039.7	315.2	008.9135	0077.8	067.8	45.73	
079.0	001.8773	0374.4	039.9	315.1	008.8977	0077.7	067.1	45.92	
080.0	001.8735	0381.1	040.2	315.0	008.8796	0077.4	066.3	46.10	
081.0	001.8697	0386.2	040.4	314.8	008.8531	0077.0	065.7	46.25	
082.0	001.8622	0391.0	040.6	314.5	008.8219	0076.6	065.0	46.39	
083.0	001.8584	0396.1	040.8	314.2	008.7916	0076.1	064.3	46.54	
084.0	001.8509	0401.2	041.0	314.0	008.7580	0075.6	063.6	46.68	
085.0	001.8472	0407.6	041.3	313.7	008.7283	0075.1	062.9	46.84	
086.0	001.8434	0413.5	041.5	313.5	008.6948	0074.6	062.2	46.99	
087.0	001.8359	0418.7	041.7	313.1	008.6551	0074.0	061.5	47.13	
088.0	001.8322	0422.5	041.9	312.7	008.6093	0073.4	060.9	47.26	
089.0	001.8248	0425.8	042.0	312.3	008.5581	0072.9	060.3	47.38	
090.0	001.8210	0429.0	042.1	311.9	008.5061	0072.6	059.7	47.52	
091.0	001.8210	0432.2	042.3	311.4	008.4528	0072.3	059.1	47.65	
092.0	001.8210	0434.1	042.4	310.9	008.3928	0072.1	058.6	47.78	
093.0	001.8210	0435.4	042.4	310.4	008.3288	0071.8	058.1	47.89	
094.0	001.8210	0436.0	042.5	309.8	008.2825	0071.7	057.6	48.01	

095.0	001.8210	0437.3	042.5		309.2	008.2825	0071.7	057.2	48.16
096.0	001.8248	0439.5	042.7		308.7	008.2825	0071.6	056.7	48.32
097.0	001.8248	0442.4	042.8		308.1	008.2825	0071.6	056.2	48.49
098.0	001.8248	0444.5	042.9		307.5	008.2825	0071.8	055.7	48.65
099.0	001.8248	0444.0	042.9		306.8	008.2825	0072.0	055.4	48.79
100.0	001.8248	0442.7	042.8		306.1	008.2825	0072.2	055.1	48.90
101.0	001.8322	0441.7	042.8		305.4	008.2825	0072.4	054.8	49.02
102.0	001.8397	0441.7	042.8		304.7	008.2825	0072.5	054.5	49.13
103.0	001.8472	0443.2	042.9		304.0	008.2825	0072.5	054.1	49.26
104.0	001.8547	0445.1	043.1		303.3	008.2825	0072.7	053.7	49.40
105.0	001.8622	0446.1	043.1		302.5	008.2825	0073.2	053.4	49.55
106.0	001.8697	0446.3	043.2		301.7	008.2825	0074.1	053.2	49.72
107.0	001.8773	0446.0	043.2		301.0	008.2825	0075.3	053.0	49.90
108.0	001.8848	0445.3	043.2		300.2	008.2825	0076.7	052.8	50.07
109.0	001.8924	0444.6	043.2		299.4	008.3553	0077.9	052.7	50.26
110.0	001.9000	0443.2	043.2		298.5	008.4490	0078.7	052.6	50.42
111.0	001.8848	0441.4	043.0		297.7	008.5453	0079.5	052.6	50.51
112.0	001.8697	0438.9	042.8		296.9	008.6416	0080.3	052.8	50.58
113.0	001.8547	0435.9	042.6		296.1	008.7375	0081.7	052.9	50.69
114.0	001.8397	0433.4	042.4		295.3	008.8322	0083.3	053.1	50.81
115.0	001.8248	0432.4	042.3		294.5	008.9263	0085.0	053.2	50.95
116.0	001.8136	0433.4	042.3		293.7	009.0205	0086.6	053.2	51.11
117.0	001.7988	0435.7	042.4		292.9	009.1154	0087.7	053.3	51.24
118.0	001.7840	0438.4	042.4		292.1	009.2111	0088.1	053.3	51.32
119.0	001.7693	0440.6	042.4		291.3	009.3067	0088.3	053.3	51.35
120.0	001.7547	0442.6	042.5		290.5	009.4023	0088.2	053.4	51.35
121.0	001.7547	0443.8	042.5		289.7	009.5602	0087.8	053.5	51.36
122.0	001.7547	0444.2	042.5		288.9	009.8138	0087.5	053.7	51.40
123.0	001.7547	0443.8	042.5		288.2	010.0651	0087.4	053.9	51.43
124.0	001.7547	0443.1	042.5		287.4	010.3144	0087.5	054.1	51.46
125.0	001.7547	0442.2	042.4		286.7	010.5612	0087.4	054.4	51.45
126.0	001.7510	0441.1	042.4		286.0	010.8030	0087.2	054.7	51.42
127.0	001.7510	0440.2	042.3		285.3	011.0461	0086.9	055.0	51.38
128.0	001.7510	0439.7	042.3		284.6	011.2897	0086.6	055.3	51.34
129.0	001.7510	0439.5	042.3		283.9	011.5333	0086.4	055.6	51.30
130.0	001.7510	0439.1	042.3		283.2	011.7727	0086.5	056.0	51.28
131.0	001.7474	0438.4	042.2		282.6	012.0030	0086.7	056.4	51.23
132.0	001.7438	0437.7	042.2		282.0	012.2295	0087.1	056.8	51.20
133.0	001.7401	0437.5	042.2		281.3	012.4566	0087.4	057.2	51.15
134.0	001.7365	0437.7	042.2		280.7	012.6838	0087.5	057.6	51.10
135.0	001.7328	0438.0	042.1		280.1	012.9071	0087.5	058.0	51.03
136.0	001.7292	0438.2	042.1		279.5	013.2023	0087.7	058.5	50.98
137.0	001.7256	0438.8	042.1		279.0	013.5195	0088.1	058.9	50.96
138.0	001.7220	0440.1	042.2		278.4	013.8430	0088.5	059.3	50.95
139.0	001.7184	0441.8	042.3		277.8	014.1688	0089.0	059.8	50.93
140.0	001.7147	0443.2	042.3		277.3	014.4832	0089.4	060.2	50.90
141.0	001.7147	0443.8	042.3		276.7	014.7854	0089.9	060.7	50.85
142.0	001.7147	0443.6	042.3		276.3	015.0666	0090.4	061.3	50.79
143.0	001.7147	0442.2	042.3		275.8	015.3160	0090.8	061.8	50.70
144.0	001.7147	0439.3	042.1		275.5	015.5274	0091.1	062.5	50.57
145.0	001.7147	0434.8	041.9		275.2	015.6992	0091.3	063.2	50.41
146.0	001.7147	0428.4	041.6		275.0	015.8245	0091.5	063.9	50.23
147.0	001.7147	0421.1	041.3		274.8	015.9206	0091.7	064.7	50.03
148.0	001.7147	0413.3	040.9		274.7	015.9984	0091.8	065.5	49.83
149.0	001.7147	0405.6	040.6		274.6	016.0701	0091.9	066.3	49.62
150.0	001.7147	0398.8	040.3		274.5	016.1483	0092.0	067.0	49.43
151.0	001.6788	0393.3	039.9		274.4	016.1699	0092.1	067.8	49.20
152.0	001.6433	0389.4	039.5		274.4	016.2118	0092.1	068.6	48.99
153.0	001.6082	0385.0	039.2		274.3	016.2375	0092.2	069.4	48.78
154.0	001.5734	0380.3	038.8		274.3	016.2477	0092.2	070.1	48.56
155.0	001.5390	0375.3	038.4		274.3	016.2427	0092.2	070.9	48.33
156.0	001.5050	0370.9	038.0		274.3	016.2369	0092.2	071.7	48.11
157.0	001.4714	0367.8	037.7		274.3	016.2463	0092.2	072.4	47.91

158.0	001.4381	0367.9	037.5		274.2	016.3106	0092.3	073.1	47.74
159.0	001.4052	0368.7	037.4		274.1	016.3801	0092.4	073.7	47.58
160.0	001.3728	0367.5	037.2		274.0	016.4025	0092.4	074.4	47.39
161.0	001.3534	0366.8	037.0		274.0	016.4580	0092.5	075.1	47.23
162.0	001.3343	0367.5	036.9		273.8	016.5358	0092.6	075.7	47.08
163.0	001.3152	0368.2	036.9		273.7	016.6066	0092.7	076.3	46.92
164.0	001.2963	0367.7	036.7		273.6	016.6481	0092.7	077.0	46.75
165.0	001.2776	0366.8	036.6		273.6	016.6734	0092.8	077.7	46.58
166.0	001.2589	0362.6	036.3		273.7	016.6271	0092.7	078.4	46.37
167.0	001.2404	0354.2	035.7		273.9	016.4867	0092.5	079.1	46.12
168.0	001.2221	0343.0	035.1		274.3	016.2731	0092.2	079.9	45.83
169.0	001.2039	0332.6	034.4		274.6	016.0668	0091.9	080.6	45.55
170.0	001.1858	0322.9	033.8		274.9	015.8698	0091.6	081.4	45.28
171.0	001.1412	0312.4	032.9		275.4	015.5769	0091.1	082.2	44.96
172.0	001.1003	0308.2	032.4		275.7	015.4286	0090.9	082.8	44.72
173.0	001.0602	0304.4	031.9		275.9	015.2840	0090.8	083.5	44.50

10-18-2023 Terrain Data: GLOBE 30 Sec FMOver Analysis

WLXK BLED19950221KD

WCQS

Channel = 202C2
 Max ERP = 50 kW
 RCAMSL = 343 m
 N. Lat. 35 13 52.40
 W. Lng. 81 42 56.40
 Protected
 60 dBu

Channel = 201C3
 Max ERP = 1.9 kW
 RCAMSL = 1100 m
 N. Lat. 35 35 23.30
 W. Lng. 82 40 25.40
 Interfering
 54 dBu

Azimuth (degrees)	ERP (kW)	HAAT (m)	Dist (km)		Azimuth (degrees)	ERP (kW)	HAAT (m)	Dist (km)	Actual (dBu)	IX (km)
235.0	047.3851	0083.1	041.1		139.8	001.7155	0442.9	083.0	47.83	
236.0	047.0062	0083.9	041.2		139.8	001.7154	0443.0	082.2	48.07	
237.0	046.6288	0084.9	041.4		139.9	001.7152	0443.0	081.5	48.31	
238.0	046.2530	0086.2	041.6		139.9	001.7150	0443.1	080.8	48.55	
239.0	045.8786	0087.8	041.8		140.0	001.7147	0443.2	080.0	48.80	
240.0	045.5058	0089.5	042.1		140.1	001.7147	0443.3	079.2	49.05	
241.0	044.7269	0091.3	042.3		140.2	001.7147	0443.3	078.5	49.30	
242.0	043.9547	0092.9	042.4		140.2	001.7147	0443.3	077.7	49.55	
243.0	043.1892	0094.0	042.5		140.1	001.7147	0443.3	077.0	49.79	
244.0	042.4305	0094.9	042.5		140.0	001.7147	0443.2	076.3	50.02	
245.0	041.6784	0095.7	042.5		139.9	001.7152	0443.0	075.5	50.25	
246.0	040.9332	0097.0	042.6		139.8	001.7155	0442.9	074.8	50.49	
247.0	040.1946	0099.2	042.8		139.8	001.7155	0442.9	074.0	50.75	
248.0	039.4627	0101.9	043.1		139.9	001.7152	0443.0	073.2	51.02	
249.0	038.7376	0105.3	043.5		140.0	001.7148	0443.1	072.4	51.30	
250.0	038.0192	0108.9	043.9		140.1	001.7147	0443.2	071.5	51.59	
251.0	036.9112	0112.3	044.2		140.1	001.7147	0443.2	070.7	51.86	
252.0	035.8196	0115.2	044.4		140.0	001.7147	0443.2	069.9	52.11	
253.0	034.7444	0117.0	044.4		139.8	001.7156	0442.9	069.2	52.35	
254.0	033.6856	0117.0	044.1		139.3	001.7172	0442.3	068.6	52.54	
255.0	032.6432	0115.1	043.6		138.6	001.7197	0441.2	068.1	52.67	
256.0	031.6172	0112.0	042.9		137.8	001.7227	0439.8	067.8	52.76	
257.0	030.6075	0109.0	042.1		137.0	001.7257	0438.7	067.5	52.84	
258.0	029.6142	0107.2	041.6		136.3	001.7283	0438.3	067.1	52.95	
259.0	028.6373	0106.7	041.2		135.7	001.7304	0438.1	066.7	53.10	
260.0	027.6768	0106.5	040.9		135.1	001.7324	0438.0	066.3	53.25	
261.0	026.7327	0105.9	040.6		134.5	001.7347	0437.9	065.9	53.37	

262.0	025.8049	0105.0	040.1		133.8	001.7371	0437.7	065.6	53.48
263.0	024.8936	0104.0	039.7		133.1	001.7396	0437.5	065.3	53.57
264.0	023.9986	0102.7	039.2		132.4	001.7422	0437.6	065.1	53.64
265.0	023.1200	0101.2	038.7		131.7	001.7450	0437.9	065.0	53.71
266.0	022.2578	0099.6	038.1		130.9	001.7478	0438.5	064.9	53.77
267.0	021.4120	0098.3	037.6		130.2	001.7505	0439.0	064.8	53.82
268.0	020.5825	0096.9	037.0		129.4	001.7510	0439.4	064.7	53.84
269.0	019.7695	0095.6	036.5		128.7	001.7510	0439.6	064.7	53.85
270.0	018.9728	0095.0	036.0		128.0	001.7510	0439.7	064.7	53.88
271.0	018.3194	0094.5	035.7		127.3	001.7510	0439.9	064.6	53.91
272.0	017.6775	0093.9	035.3		126.7	001.7510	0440.4	064.5	53.95
273.0	017.0470	0093.2	034.9		126.1	001.7510	0441.0	064.5	53.97
274.0	016.4279	0092.5	034.5		125.4	001.7533	0441.7	064.5	53.98
275.0	015.8203	0091.5	034.0		124.7	001.7547	0442.4	064.6	53.97
276.0	015.2242	0090.7	033.5		124.1	001.7547	0443.1	064.7	53.95
277.0	014.6395	0089.7	033.0		123.4	001.7547	0443.6	064.9	53.91
278.0	014.0662	0088.9	032.6		122.8	001.7547	0443.9	065.1	53.86
279.0	013.5044	0088.0	032.1		122.2	001.7547	0444.1	065.3	53.80
280.0	012.9541	0087.5	031.7		121.6	001.7547	0444.1	065.4	53.74
281.0	012.5801	0087.5	031.5		121.0	001.7547	0443.8	065.4	53.73
282.0	012.2117	0087.0	031.2		120.5	001.7547	0443.3	065.5	53.68
283.0	011.8487	0086.5	030.8		120.0	001.7552	0442.5	065.7	53.62
284.0	011.4912	0086.4	030.6		119.5	001.7626	0441.6	065.7	53.59
285.0	011.1392	0086.8	030.4		119.0	001.7697	0440.5	065.8	53.58
286.0	010.7927	0087.2	030.3		118.5	001.7768	0439.6	065.8	53.56
287.0	010.4516	0087.5	030.1		118.0	001.7838	0438.5	065.8	53.53
288.0	010.1160	0087.5	029.9		117.5	001.7910	0437.2	066.0	53.47
289.0	009.7859	0087.5	029.7		117.1	001.7980	0435.8	066.1	53.40
290.0	009.4613	0087.9	029.5		116.6	001.8049	0434.6	066.2	53.36
291.0	009.3398	0088.3	029.5		116.1	001.8115	0433.6	066.2	53.36
292.0	009.2192	0088.1	029.4		115.7	001.8170	0432.9	066.2	53.33
293.0	009.0994	0087.5	029.2		115.2	001.8221	0432.4	066.4	53.28
294.0	008.9803	0085.9	028.8		114.8	001.8278	0432.4	066.7	53.18
295.0	008.8621	0083.8	028.4		114.4	001.8342	0432.8	067.1	53.07
296.0	008.7446	0081.8	028.0		113.9	001.8404	0433.5	067.5	52.96
297.0	008.6279	0080.2	027.7		113.6	001.8464	0434.4	067.9	52.88
298.0	008.5119	0079.3	027.4		113.2	001.8523	0435.5	068.2	52.83
299.0	008.3968	0078.3	027.2		112.8	001.8580	0436.5	068.4	52.78
300.0	008.2825	0076.9	026.9		112.4	001.8635	0437.6	068.8	52.71
301.0	008.2825	0075.3	026.6		112.1	001.8689	0438.7	069.1	52.64
302.0	008.2825	0073.7	026.4		111.7	001.8741	0439.7	069.4	52.57
303.0	008.2825	0072.8	026.2		111.4	001.8794	0440.6	069.7	52.53
304.0	008.2825	0072.5	026.2		111.0	001.8848	0441.4	069.8	52.52
305.0	008.2825	0072.5	026.2		110.6	001.8903	0442.1	069.9	52.52
306.0	008.2825	0072.2	026.1		110.3	001.8957	0442.8	070.0	52.50
307.0	008.2825	0072.0	026.1		109.9	001.8995	0443.4	070.2	52.47
308.0	008.2825	0071.7	026.1		109.6	001.8969	0443.9	070.4	52.42
309.0	008.2825	0071.6	026.1		109.2	001.8942	0444.4	070.5	52.37
310.0	008.2825	0071.8	026.1		108.9	001.8916	0444.7	070.7	52.33
311.0	008.4009	0072.1	026.2		108.5	001.8887	0445.0	070.7	52.32
312.0	008.5202	0072.6	026.4		108.1	001.8856	0445.2	070.7	52.31
313.0	008.6403	0073.8	026.6		107.7	001.8824	0445.5	070.7	52.33
314.0	008.7613	0075.6	027.0		107.2	001.8788	0445.8	070.5	52.38
315.0	008.8831	0077.5	027.4		106.7	001.8751	0446.1	070.4	52.42
316.0	009.0058	0078.4	027.6		106.3	001.8719	0446.3	070.4	52.41
317.0	009.1293	0077.8	027.6		105.9	001.8693	0446.3	070.7	52.32
318.0	009.2536	0076.1	027.4		105.7	001.8674	0446.3	071.1	52.18
319.0	009.3788	0073.9	027.2		105.5	001.8659	0446.3	071.6	52.01
320.0	009.5048	0071.6	026.9		105.3	001.8645	0446.3	072.1	51.84
321.0	009.7152	0069.5	026.6		105.1	001.8630	0446.2	072.5	51.69
322.0	009.9280	0068.1	026.5		104.9	001.8611	0446.1	072.9	51.56
323.0	010.1430	0067.0	026.5		104.6	001.8592	0445.9	073.2	51.44
324.0	010.3604	0065.6	026.4		104.4	001.8575	0445.6	073.6	51.31

325.0	010.5800	0063.8	026.2		104.2	001.8560	0445.4	074.0	51.16
326.0	010.8578	0062.0	026.0		104.0	001.8546	0445.1	074.4	51.01
327.0	011.1392	0060.4	025.9		103.8	001.8532	0444.8	074.8	50.87
328.0	011.4242	0059.0	025.8		103.6	001.8517	0444.5	075.2	50.73
329.0	011.7128	0057.6	025.7		103.4	001.8503	0444.1	075.6	50.58
330.0	012.0050	0056.5	025.6		103.2	001.8489	0443.7	076.0	50.45
331.0	012.3008	0055.4	025.5		103.0	001.8475	0443.3	076.4	50.31
332.0	012.6002	0053.7	025.3		102.9	001.8468	0443.1	076.9	50.14
333.0	012.9032	0051.3	024.9		103.0	001.8468	0443.1	077.5	49.95
334.0	013.2098	0048.7	024.4		103.0	001.8473	0443.3	078.1	49.75
335.0	013.5200	0046.6	024.0		103.1	001.8476	0443.3	078.7	49.56
336.0	013.7708	0044.9	023.7		103.1	001.8476	0443.3	079.2	49.39
337.0	014.0238	0043.5	023.4		103.0	001.8474	0443.3	079.7	49.23
338.0	014.2792	0042.4	023.2		103.0	001.8470	0443.2	080.1	49.08
339.0	014.5368	0041.8	023.2		102.8	001.8460	0442.9	080.5	48.95
340.0	014.7968	0041.9	023.3		102.6	001.8442	0442.4	080.8	48.85
341.0	014.9714	0042.7	023.6		102.3	001.8419	0442.0	081.0	48.76
342.0	015.1470	0043.8	023.9		101.9	001.8391	0441.6	081.1	48.69
343.0	015.3236	0045.3	024.4		101.5	001.8359	0441.5	081.3	48.63
344.0	015.5013	0046.6	024.8		101.1	001.8330	0441.6	081.5	48.56
345.0	015.6800	0047.7	025.1		100.7	001.8303	0441.9	081.7	48.49
346.0	015.8259	0048.9	025.5		100.4	001.8277	0442.2	081.9	48.42
347.0	015.9726	0049.5	025.7		100.1	001.8257	0442.6	082.3	48.32
348.0	016.1198	0049.8	025.8		099.9	001.8248	0442.8	082.6	48.20
349.0	016.2678	0049.8	025.9		099.8	001.8248	0443.1	083.0	48.08
350.0	016.4165	0050.7	026.1		099.5	001.8248	0443.4	083.4	47.98
351.0	016.3821	0052.6	026.6		099.1	001.8248	0443.9	083.6	47.90
352.0	016.3478	0054.9	027.1		098.7	001.8248	0444.4	083.9	47.82
353.0	016.3135	0056.3	027.4		098.4	001.8248	0444.6	084.3	47.71
354.0	016.2792	0057.2	027.6		098.2	001.8248	0444.6	084.7	47.57

-----|-----

Table 4: FMOVER protection of WSBF-FM Clemson, South Carolina

10-18-2023 Terrain Data: GLOBE 30 Sec FMOVER Analysis

WCQS

WSBF-FM BLED19920327KB

Channel = 201C3
 Max ERP = 1.9 kW
 RCAMSL = 1100 m
 N. Lat. 35 35 23.30
 W. Lng. 82 40 25.40
 Protected
 60 dBu

Channel = 201A
 Max ERP = 3 kW
 RCAMSL = 307 m
 N. Lat. 34 40 42.30
 W. Lng. 82 49 14.50
 Interfering
 40 dBu

Azimuth (degrees)	ERP (kW)	HAAT (m)	Dist (km)	Azimuth (degrees)	ERP (kW)	HAAT (m)	Dist (km)	Actual (dBu)	IX (km)
128.0	001.7510	0439.7	042.3	031.8	003.0000	0034.0	088.6	33.28	
129.0	001.7510	0439.5	042.3	031.7	003.0000	0034.0	087.9	33.44	
130.0	001.7510	0439.1	042.3	031.6	003.0000	0034.1	087.2	33.60	
131.0	001.7474	0438.4	042.2	031.5	003.0000	0034.2	086.4	33.76	
132.0	001.7438	0437.7	042.2	031.4	003.0000	0034.4	085.7	33.92	
133.0	001.7401	0437.5	042.2	031.3	003.0000	0034.5	085.0	34.08	
134.0	001.7365	0437.7	042.2	031.2	003.0000	0034.7	084.3	34.25	
135.0	001.7328	0438.0	042.1	031.1	003.0000	0034.9	083.6	34.41	
136.0	001.7292	0438.2	042.1	030.9	003.0000	0035.1	082.9	34.57	
137.0	001.7256	0438.8	042.1	030.8	003.0000	0035.3	082.2	34.74	
138.0	001.7220	0440.1	042.2	030.7	003.0000	0035.5	081.4	34.91	
139.0	001.7184	0441.8	042.3	030.6	003.0000	0035.7	080.7	35.07	
140.0	001.7147	0443.2	042.3	030.4	003.0000	0036.0	080.0	35.24	
141.0	001.7147	0443.8	042.3	030.3	003.0000	0036.3	079.3	35.41	
142.0	001.7147	0443.6	042.3	030.1	003.0000	0036.8	078.6	35.58	
143.0	001.7147	0442.2	042.3	029.8	003.0000	0037.4	078.0	35.76	
144.0	001.7147	0439.3	042.1	029.5	003.0000	0038.2	077.3	35.95	
145.0	001.7147	0434.8	041.9	029.1	003.0000	0039.1	076.8	36.14	
146.0	001.7147	0428.4	041.6	028.7	003.0000	0040.2	076.2	36.33	
147.0	001.7147	0421.1	041.3	028.2	003.0000	0041.3	075.8	36.51	
148.0	001.7147	0413.3	040.9	027.7	003.0000	0042.2	075.3	36.68	
149.0	001.7147	0405.6	040.6	027.2	003.0000	0042.9	074.9	36.83	
150.0	001.7147	0398.8	040.3	026.7	003.0000	0043.4	074.4	36.96	
151.0	001.6788	0393.3	039.9	026.2	003.0000	0043.7	074.1	37.06	
152.0	001.6433	0389.4	039.5	025.6	003.0000	0043.8	073.7	37.15	
153.0	001.6082	0385.0	039.2	025.1	003.0000	0043.9	073.4	37.23	
154.0	001.5734	0380.3	038.8	024.5	003.0000	0044.1	073.1	37.31	
155.0	001.5390	0375.3	038.4	024.0	003.0000	0044.4	072.8	37.39	
156.0	001.5050	0370.9	038.0	023.4	003.0000	0044.5	072.6	37.46	
157.0	001.4714	0367.8	037.7	022.8	003.0000	0044.3	072.3	37.50	
158.0	001.4381	0367.9	037.5	022.4	003.0000	0044.0	072.0	37.55	
159.0	001.4052	0368.7	037.4	021.9	003.0000	0043.5	071.6	37.59	
160.0	001.3728	0367.5	037.2	021.4	003.0000	0042.8	071.4	37.58	
161.0	001.3534	0366.8	037.0	020.9	003.0000	0042.0	071.1	37.58	
162.0	001.3343	0367.5	036.9	020.5	003.0000	0041.2	070.7	37.59	
163.0	001.3152	0368.2	036.9	020.0	003.0000	0040.5	070.4	37.59	
164.0	001.2963	0367.7	036.7	019.6	003.0000	0039.7	070.1	37.58	
165.0	001.2776	0366.8	036.6	019.1	003.0000	0039.0	069.9	37.57	
166.0	001.2589	0362.6	036.3	018.5	003.0000	0038.5	069.8	37.54	
167.0	001.2404	0354.2	035.7	017.8	003.0000	0038.0	069.9	37.47	
168.0	001.2221	0343.0	035.1	017.1	003.0000	0037.5	070.2	37.37	

169.0	001.2039	0332.6	034.4		016.4	003.0000	0037.0	070.5	37.27
170.0	001.1858	0322.9	033.8		015.7	003.0000	0036.2	070.7	37.13
171.0	001.1412	0312.4	032.9		015.0	003.0000	0034.8	071.3	36.90
172.0	001.1003	0308.2	032.4		014.4	003.0000	0033.2	071.5	36.70
173.0	001.0602	0304.4	031.9		013.9	003.0000	0031.5	071.8	36.51
174.0	001.0181	0292.1	031.0		013.2	003.0000	0029.9	072.5	36.24
175.0	000.9768	0279.4	030.0		012.6	003.0000	0028.8	073.2	36.10
176.0	000.9390	0272.5	029.3		012.0	003.0000	0027.9	073.7	36.02
177.0	000.8994	0278.3	029.3		011.7	003.0000	0027.4	073.5	36.05
178.0	000.8631	0284.3	029.4		011.3	003.0000	0027.0	073.4	36.07
179.0	000.8276	0292.8	029.5		010.9	003.0000	0026.6	073.2	36.12
180.0	000.7904	0308.0	029.9		010.6	003.0000	0025.9	072.7	36.21
181.0	000.7807	0323.2	030.6		010.3	003.0000	0025.3	071.9	36.34
182.0	000.7685	0337.8	031.2		009.9	003.0000	0024.5	071.2	36.47
183.0	000.7589	0336.4	031.0		009.5	003.0000	0023.3	071.3	36.45
184.0	000.7469	0330.6	030.6		009.0	003.0000	0022.1	071.7	36.39
185.0	000.7374	0324.3	030.2		008.5	003.0000	0020.8	072.0	36.32
186.0	000.7257	0317.6	029.8		008.1	003.0000	0020.0	072.4	36.25
187.0	000.7140	0309.1	029.3		007.7	003.0000	0020.1	072.9	36.16
188.0	000.7047	0302.9	028.9		007.3	003.0000	0020.3	073.3	36.09
189.0	000.6932	0307.1	029.0		006.9	003.0000	0020.5	073.2	36.10
190.0	000.6840	0311.4	029.1		006.5	003.0000	0020.7	073.2	36.12
191.0	000.6863	0316.0	029.3		006.1	003.0000	0020.9	073.0	36.15
192.0	000.6886	0320.2	029.5		005.7	003.0000	0021.3	072.8	36.18
193.0	000.6909	0326.7	029.9		005.2	003.0000	0021.4	072.5	36.23
194.0	000.6932	0339.7	030.5		004.7	003.0000	0021.2	072.0	36.33
195.0	000.6954	0348.6	031.0		004.3	003.0000	0020.8	071.6	36.40
196.0	000.6977	0353.0	031.2		003.8	003.0000	0020.2	071.5	36.42
197.0	000.7001	0355.7	031.4		003.3	003.0000	0019.6	071.4	36.43
198.0	000.7024	0358.6	031.5		002.9	003.0000	0019.2	071.4	36.43
199.0	000.7047	0360.1	031.6		002.4	003.0000	0018.9	071.5	36.42
200.0	000.7070	0359.3	031.6		002.0	003.0000	0018.6	071.7	36.39
201.0	000.7398	0360.8	032.0		001.5	003.0000	0018.2	071.4	36.43
202.0	000.7734	0366.2	032.6		000.9	003.0000	0017.9	071.1	36.49
203.0	000.8077	0370.2	033.1		000.3	003.0000	0017.5	070.8	36.54
204.0	000.8428	0370.1	033.5		359.8	003.0000	0017.4	070.7	36.55
205.0	000.8786	0366.9	033.7		359.3	003.0000	0017.9	070.8	36.54
206.0	000.9151	0364.4	033.9		358.8	003.0000	0018.4	070.9	36.52
207.0	000.9524	0362.4	034.1		358.3	003.0000	0019.0	071.0	36.51
208.0	000.9904	0358.6	034.2		357.8	003.0000	0019.4	071.2	36.48
209.0	001.0292	0352.1	034.2		357.4	003.0000	0019.9	071.5	36.42
210.0	001.0687	0343.1	034.0		357.1	003.0000	0020.2	071.9	36.34
211.0	001.1119	0333.9	033.9		356.7	003.0000	0020.5	072.4	36.25
212.0	001.1560	0326.4	033.8		356.4	003.0000	0020.7	072.8	36.18
213.0	001.2008	0322.1	033.8		356.0	003.0000	0020.8	073.1	36.12
214.0	001.2466	0320.1	034.0		355.6	003.0000	0021.2	073.3	36.08
215.0	001.2932	0318.2	034.2		355.1	003.0000	0021.7	073.6	36.04
216.0	001.3406	0315.1	034.3		354.7	003.0000	0022.2	073.9	35.99
217.0	001.3889	0310.0	034.3		354.3	003.0000	0022.7	074.3	35.91
218.0	001.4381	0303.0	034.2		354.1	003.0000	0023.3	074.8	35.83
219.0	001.4881	0293.4	033.9		353.9	003.0000	0023.8	075.4	35.72
220.0	001.5390	0281.8	033.5		353.8	003.0000	0024.0	076.1	35.59
221.0	001.5734	0271.2	033.1		353.7	003.0000	0024.2	076.8	35.45
222.0	001.6082	0263.1	032.8		353.6	003.0000	0024.5	077.4	35.33
223.0	001.6433	0258.9	032.7		353.4	003.0000	0025.0	077.9	35.24
224.0	001.6788	0259.0	032.9		353.0	003.0000	0025.8	078.2	35.17
225.0	001.7147	0261.6	033.2		352.6	003.0000	0026.5	078.5	35.13
226.0	001.7510	0266.3	033.6		352.1	003.0000	0027.1	078.7	35.09
227.0	001.7877	0272.2	034.1		351.5	003.0000	0027.7	078.9	35.05
228.0	001.8248	0276.8	034.6		351.0	003.0000	0028.1	079.1	35.00
229.0	001.8622	0279.5	034.9		350.6	003.0000	0028.4	079.5	34.93
230.0	001.9000	0280.9	035.1		350.2	003.0000	0028.8	079.9	34.85
231.0	001.9000	0282.8	035.2		349.9	003.0000	0029.2	080.4	34.76

232.0	001.9000	0285.0	035.4		349.6	003.0000	0029.8	080.8	34.66
233.0	001.9000	0287.1	035.5		349.4	003.0000	0030.4	081.3	34.59
234.0	001.9000	0288.0	035.5		349.1	003.0000	0031.0	081.9	34.52
235.0	001.9000	0288.8	035.6		348.9	003.0000	0031.5	082.4	34.44
236.0	001.9000	0290.2	035.7		348.7	003.0000	0032.1	083.0	34.36
237.0	001.9000	0290.4	035.7		348.5	003.0000	0032.5	083.5	34.27
238.0	001.9000	0288.0	035.5		348.5	003.0000	0032.6	084.2	34.15
239.0	001.9000	0282.0	035.2		348.5	003.0000	0032.4	084.9	33.99
240.0	001.9000	0273.4	034.7		348.7	003.0000	0032.0	085.6	33.81
241.0	001.9000	0263.0	034.1		349.0	003.0000	0031.3	086.4	33.61
242.0	001.9000	0250.2	033.3		349.4	003.0000	0030.4	087.2	33.39
243.0	001.9000	0235.5	032.3		349.9	003.0000	0029.3	088.0	33.20
244.0	001.9000	0220.1	031.2		350.4	003.0000	0028.6	088.8	33.03
245.0	001.9000	0205.2	030.1		351.0	003.0000	0028.1	089.7	32.86
246.0	001.9000	0193.8	029.3		351.5	003.0000	0027.7	090.4	32.71
247.0	001.9000	0187.5	028.8		351.6	003.0000	0027.5	091.0	32.58

10-18-2023 Terrain Data: GLOBE 30 Sec FMOver Analysis

WSBF-FM BLED19920327KB

WCQS

Channel = 201A
 Max ERP = 3 kW
 RCAMSL = 307 m
 N. Lat. 34 40 42.30
 W. Lng. 82 49 14.50
 Protected
 60 dBu

Channel = 201C3
 Max ERP = 1.9 kW
 RCAMSL = 1100 m
 N. Lat. 35 35 23.30
 W. Lng. 82 40 25.40
 Interfering
 40 dBu

Azimuth (degrees)	ERP (kW)	HAAT (m)	Dist (km)		Azimuth (degrees)	ERP (kW)	HAAT (m)	Dist (km)	Actual (dBu)	IX (km)
307.0	003.0000	0060.1	019.0		197.6	000.7015	0357.5	094.3	37.60	
308.0	003.0000	0058.9	018.8		197.5	000.7012	0357.0	094.1	37.65	
309.0	003.0000	0059.7	018.9		197.5	000.7011	0357.0	093.7	37.76	
310.0	003.0000	0062.2	019.3		197.6	000.7014	0357.4	093.3	37.91	
311.0	003.0000	0064.8	019.7		197.7	000.7017	0357.8	092.8	38.07	
312.0	003.0000	0066.9	019.9		197.8	000.7019	0358.0	092.4	38.21	
313.0	003.0000	0068.1	020.1		197.8	000.7019	0358.0	092.0	38.33	
314.0	003.0000	0068.1	020.1		197.7	000.7017	0357.7	091.7	38.42	
315.0	003.0000	0066.9	020.0		197.5	000.7013	0357.2	091.4	38.47	
316.0	003.0000	0064.8	019.7		197.3	000.7006	0356.4	091.3	38.50	
317.0	003.0000	0062.1	019.3		196.9	000.6999	0355.5	091.2	38.50	
318.0	003.0000	0060.0	019.0		196.7	000.6993	0354.8	091.0	38.52	
319.0	003.0000	0060.0	019.0		196.6	000.6990	0354.5	090.7	38.60	
320.0	003.0000	0061.7	019.2		196.6	000.6991	0354.6	090.3	38.73	
321.0	003.0000	0063.6	019.5		196.6	000.6991	0354.6	089.9	38.87	
322.0	003.0000	0065.1	019.7		196.6	000.6991	0354.6	089.5	39.00	
323.0	003.0000	0066.2	019.9		196.5	000.6990	0354.5	089.1	39.11	
324.0	003.0000	0066.7	019.9		196.4	000.6988	0354.2	088.8	39.20	
325.0	003.0000	0066.6	019.9		196.3	000.6984	0353.8	088.5	39.28	
326.0	003.0000	0066.5	019.9		196.1	000.6981	0353.4	088.3	39.34	
327.0	003.0000	0066.0	019.8		196.0	000.6977	0352.9	088.1	39.40	
328.0	003.0000	0065.3	019.7		195.8	000.6972	0352.2	087.9	39.43	
329.0	003.0000	0063.9	019.5		195.5	000.6966	0351.2	087.8	39.44	
330.0	003.0000	0062.2	019.3		195.3	000.6960	0350.0	087.7	39.42	
331.0	003.0000	0061.0	019.1		195.0	000.6955	0348.7	087.6	39.41	
332.0	003.0000	0060.6	019.1		194.8	000.6951	0347.4	087.4	39.43	
333.0	003.0000	0060.8	019.1		194.7	000.6947	0346.3	087.1	39.47	

334.0	003.0000	0061.0	019.1		194.5	000.6944	0345.1	086.9	39.51
335.0	003.0000	0061.1	019.1		194.4	000.6940	0343.6	086.7	39.54
336.0	003.0000	0060.8	019.1		194.2	000.6935	0341.6	086.5	39.53
337.0	003.0000	0059.9	019.0		193.9	000.6930	0339.0	086.4	39.48
338.0	003.0000	0059.1	018.8		193.7	000.6925	0336.1	086.3	39.41
339.0	003.0000	0058.7	018.8		193.5	000.6920	0333.3	086.2	39.37
340.0	003.0000	0058.1	018.7		193.3	000.6916	0330.4	086.1	39.31
341.0	003.0000	0056.3	018.4		193.0	000.6909	0326.9	086.1	39.17
342.0	003.0000	0053.2	017.8		192.6	000.6901	0323.5	086.4	38.96
343.0	003.0000	0049.9	017.2		192.3	000.6892	0321.3	086.8	38.75
344.0	003.0000	0046.7	016.5		191.9	000.6883	0319.7	087.3	38.56
345.0	003.0000	0042.9	015.7		191.5	000.6874	0318.0	087.9	38.31
346.0	003.0000	0038.7	014.9		191.1	000.6865	0316.3	088.5	38.04
347.0	003.0000	0035.7	014.3		190.8	000.6858	0315.1	089.0	37.86
348.0	003.0000	0033.5	013.9		190.5	000.6852	0314.0	089.3	37.73
349.0	003.0000	0031.3	013.5		190.3	000.6847	0312.8	089.5	37.60
350.0	003.0000	0029.1	013.2		190.1	000.6842	0311.9	089.7	37.52
351.0	003.0000	0028.1	013.2		190.0	000.6844	0311.2	089.6	37.53
352.0	003.0000	0027.2	013.2		189.8	000.6857	0310.6	089.5	37.54
353.0	003.0000	0025.9	013.2		189.7	000.6870	0310.1	089.5	37.56
354.0	003.0000	0023.5	013.2		189.5	000.6883	0309.6	089.4	37.57
355.0	003.0000	0021.8	013.2		189.4	000.6896	0309.0	089.3	37.58
356.0	003.0000	0020.8	013.2		189.2	000.6909	0308.4	089.3	37.58
357.0	003.0000	0020.3	013.2		189.1	000.6922	0307.7	089.2	37.58
358.0	003.0000	0019.2	013.2		189.0	000.6937	0306.8	089.2	37.58
359.0	003.0000	0018.2	013.2		188.8	000.6954	0306.0	089.1	37.58
000.0	003.0000	0017.3	013.2		188.7	000.6970	0305.2	089.1	37.57
001.0	003.0000	0017.9	013.2		188.5	000.6987	0304.4	089.1	37.57
002.0	003.0000	0018.6	013.2		188.4	000.7004	0303.7	089.1	37.57
003.0	003.0000	0019.3	013.2		188.2	000.7021	0303.2	089.0	37.57
004.0	003.0000	0020.5	013.2		188.1	000.7039	0302.9	089.0	37.58
005.0	003.0000	0021.4	013.2		187.9	000.7054	0302.9	089.0	37.59
006.0	003.0000	0021.0	013.2		187.8	000.7068	0303.3	089.0	37.61
007.0	003.0000	0020.4	013.2		187.6	000.7081	0303.9	089.0	37.64
008.0	003.0000	0020.0	013.2		187.5	000.7095	0304.9	089.0	37.68
009.0	003.0000	0022.1	013.2		187.3	000.7109	0306.1	089.0	37.73
010.0	003.0000	0024.7	013.2		187.2	000.7123	0307.5	089.0	37.78
011.0	003.0000	0026.7	013.2		187.0	000.7137	0308.8	089.0	37.82
012.0	003.0000	0027.9	013.2		186.9	000.7153	0310.1	089.0	37.87
013.0	003.0000	0029.5	013.2		186.7	000.7170	0311.5	089.1	37.92
014.0	003.0000	0031.8	013.6		186.6	000.7191	0313.2	088.8	38.08
015.0	003.0000	0034.7	014.1		186.4	000.7215	0315.0	088.3	38.30
016.0	003.0000	0036.6	014.4		186.2	000.7238	0316.5	087.9	38.46
017.0	003.0000	0037.5	014.6		186.0	000.7259	0317.8	087.8	38.56
018.0	003.0000	0038.1	014.8		185.8	000.7281	0318.8	087.7	38.62
019.0	003.0000	0038.9	014.9		185.6	000.7303	0319.7	087.6	38.70
020.0	003.0000	0040.4	015.2		185.4	000.7328	0321.0	087.4	38.82
021.0	003.0000	0042.1	015.6		185.2	000.7355	0322.9	087.2	38.98
022.0	003.0000	0043.6	015.9		184.9	000.7381	0325.0	086.9	39.14
023.0	003.0000	0044.4	016.0		184.7	000.7401	0326.5	086.8	39.22
024.0	003.0000	0044.4	016.0		184.5	000.7417	0327.4	086.9	39.23
025.0	003.0000	0044.0	016.0		184.4	000.7432	0328.3	087.1	39.21
026.0	003.0000	0043.7	015.9		184.2	000.7447	0329.2	087.3	39.20
027.0	003.0000	0043.2	015.8		184.1	000.7460	0330.1	087.5	39.17
028.0	003.0000	0041.7	015.5		184.0	000.7468	0330.5	087.9	39.06
029.0	003.0000	0039.5	015.0		184.0	000.7472	0330.7	088.4	38.90
030.0	003.0000	0037.0	014.5		184.0	000.7473	0330.8	089.0	38.72
031.0	003.0000	0035.0	014.1		183.9	000.7477	0331.0	089.4	38.59
032.0	003.0000	0033.8	013.9		183.9	000.7486	0331.4	089.7	38.51
033.0	003.0000	0033.6	013.9		183.7	000.7501	0332.2	089.9	38.49
034.0	003.0000	0033.4	013.8		183.6	000.7515	0332.9	090.0	38.47
035.0	003.0000	0032.2	013.6		183.6	000.7522	0333.3	090.3	38.39
036.0	003.0000	0029.9	013.2		183.6	000.7521	0333.2	090.8	38.24

037.0	003.0000	0027.2	013.2		183.4	000.7536	0334.0	090.9	38.23
038.0	003.0000	0025.1	013.2		183.3	000.7550	0334.7	091.1	38.22
039.0	003.0000	0023.8	013.2		183.2	000.7564	0335.4	091.2	38.21
040.0	003.0000	0023.6	013.2		183.1	000.7578	0336.0	091.3	38.19
041.0	003.0000	0024.0	013.2		183.0	000.7591	0336.5	091.5	38.17
042.0	003.0000	0024.3	013.2		182.9	000.7602	0337.0	091.6	38.15
043.0	003.0000	0024.4	013.2		182.8	000.7613	0337.3	091.8	38.12
044.0	003.0000	0024.8	013.2		182.6	000.7623	0337.6	091.9	38.08
045.0	003.0000	0026.0	013.2		182.5	000.7634	0337.8	092.1	38.05
046.0	003.0000	0027.4	013.2		182.4	000.7644	0338.0	092.2	38.01
047.0	003.0000	0028.4	013.2		182.3	000.7654	0338.3	092.4	37.97
048.0	003.0000	0028.8	013.2		182.2	000.7663	0338.5	092.6	37.93
049.0	003.0000	0028.9	013.2		182.1	000.7673	0338.4	092.7	37.89
050.0	003.0000	0029.6	013.2		182.0	000.7682	0338.0	092.9	37.83
051.0	003.0000	0031.5	013.5		181.8	000.7708	0335.7	092.9	37.77
052.0	003.0000	0034.0	014.0		181.5	000.7747	0330.8	092.8	37.68
053.0	003.0000	0036.5	014.4		181.2	000.7786	0325.9	092.7	37.58
054.0	003.0000	0038.4	014.8		180.9	000.7818	0321.5	092.6	37.48
055.0	003.0000	0039.7	015.1		180.7	000.7839	0318.2	092.7	37.36
056.0	003.0000	0040.4	015.2		180.5	000.7855	0315.7	092.8	37.25
057.0	003.0000	0040.6	015.2		180.4	000.7866	0314.0	093.0	37.14
058.0	003.0000	0041.0	015.3		180.3	000.7879	0311.9	093.2	37.03
059.0	003.0000	0042.5	015.6		180.0	000.7903	0308.2	093.3	36.91
060.0	003.0000	0045.0	016.2		179.6	000.8039	0302.4	093.2	36.81
061.0	003.0000	0047.6	016.7		179.3	000.8179	0296.7	093.2	36.71
062.0	003.0000	0049.2	017.1		179.0	000.8278	0292.8	093.3	36.61
063.0	003.0000	0049.7	017.2		178.9	000.8328	0291.5	093.6	36.52
064.0	003.0000	0049.6	017.1		178.8	000.8349	0290.9	093.8	36.43
065.0	003.0000	0049.0	017.0		178.8	000.8354	0290.8	094.2	36.33
066.0	003.0000	0048.3	016.9		178.8	000.8351	0290.9	094.5	36.23

-----|-----

Table 5: FMOVER protection of WJYJ Hickory, North Carolina

10-18-2023 Terrain Data: GLOBE 30 Sec FMOVER Analysis

WCQS

WJYJ BLED20011024AAG

Channel = 201C3
 Max ERP = 1.9 kW
 RCAMSL = 1100 m
 N. Lat. 35 35 23.30
 W. Lng. 82 40 25.40
 Protected
 60 dBu

Channel = 201C2
 Max ERP = 26.5 kW
 RCAMSL = 372 m
 N. Lat. 35 43 34.50
 W. Lng. 81 08 51.30
 Interfering
 40 dBu

Azimuth (degrees)	ERP (kW)	HAAT (m)	Dist (km)	Azimuth (degrees)	ERP (kW)	HAAT (m)	Dist (km)	Actual (dBu)	IX (km)
023.0	001.8660	0469.7	044.3	282.4	026.5000	0047.3	122.9	36.69	
024.0	001.8697	0471.2	044.4	282.4	026.5000	0047.3	122.1	36.83	
025.0	001.8735	0472.2	044.5	282.3	026.5000	0047.3	121.4	36.97	
026.0	001.8810	0472.3	044.5	282.3	026.5000	0047.3	120.6	37.11	
027.0	001.8848	0471.7	044.5	282.2	026.5000	0047.4	119.8	37.25	
028.0	001.8886	0471.3	044.5	282.0	026.5000	0047.4	119.1	37.39	
029.0	001.8924	0471.1	044.5	281.9	026.5000	0047.4	118.4	37.53	
030.0	001.8962	0470.1	044.5	281.8	026.5000	0047.4	117.6	37.66	
031.0	001.8962	0467.9	044.4	281.6	026.5000	0047.5	116.9	37.79	
032.0	001.8962	0465.1	044.2	281.4	026.5000	0047.5	116.3	37.92	
033.0	001.8962	0463.0	044.1	281.2	026.5000	0047.6	115.6	38.05	
034.0	001.8962	0462.1	044.1	281.1	026.5000	0047.6	114.9	38.18	
035.0	001.9000	0462.4	044.1	280.9	026.5000	0047.7	114.2	38.31	
036.0	001.9000	0462.9	044.1	280.8	026.5000	0047.7	113.5	38.44	
037.0	001.9000	0463.4	044.2	280.6	026.5000	0047.8	112.8	38.57	
038.0	001.9000	0463.0	044.1	280.4	026.5000	0047.8	112.1	38.70	
039.0	001.9000	0461.1	044.0	280.2	026.5000	0047.9	111.5	38.82	
040.0	001.9000	0458.0	043.9	279.9	026.3965	0048.1	110.9	38.92	
041.0	001.9000	0454.9	043.7	279.6	026.0784	0048.2	110.3	38.98	
042.0	001.9000	0452.0	043.6	279.4	025.7576	0048.4	109.8	39.04	
043.0	001.9000	0448.9	043.5	279.1	025.4277	0048.6	109.2	39.09	
044.0	001.9000	0445.3	043.3	278.8	025.0820	0048.8	108.7	39.13	
045.0	001.9000	0441.6	043.1	278.5	024.7256	0048.8	108.2	39.16	
046.0	001.9000	0437.7	042.9	278.1	024.3631	0048.8	107.7	39.19	
047.0	001.9000	0433.1	042.7	277.8	023.9821	0048.8	107.3	39.20	
048.0	001.9000	0427.9	042.5	277.4	023.5848	0048.7	106.9	39.20	
049.0	001.9000	0423.5	042.2	277.1	023.2043	0048.6	106.5	39.20	
050.0	001.9000	0421.4	042.2	276.8	022.8656	0048.6	106.0	39.22	
051.0	001.9000	0421.2	042.1	276.5	022.5578	0048.6	105.5	39.26	
052.0	001.9000	0420.6	042.1	276.2	022.2381	0048.6	105.0	39.29	
053.0	001.9000	0417.9	042.0	275.8	021.8746	0048.8	104.6	39.30	
054.0	001.9000	0413.0	041.8	275.5	021.4715	0049.0	104.3	39.29	
055.0	001.9000	0407.0	041.5	275.1	021.0495	0049.3	104.0	39.26	
056.0	001.9000	0400.1	041.2	274.6	020.6180	0049.7	103.8	39.23	
057.0	001.9000	0392.7	040.9	274.2	020.1832	0050.4	103.7	39.19	
058.0	001.9000	0385.0	040.5	273.8	019.7486	0051.0	103.5	39.15	
059.0	001.9000	0378.5	040.2	273.4	019.3374	0051.6	103.4	39.11	
060.0	001.9000	0375.3	040.1	273.0	018.9715	0052.1	103.1	39.10	
061.0	001.9000	0376.4	040.1	272.7	018.6583	0052.5	102.7	39.12	
062.0	001.9000	0380.8	040.3	272.4	018.3804	0052.9	102.2	39.17	
063.0	001.9000	0387.4	040.6	272.1	018.1189	0053.2	101.6	39.24	

064.0	001.9000	0396.1	041.0		271.9	017.8731	0053.5	100.9	39.32
065.0	001.9000	0405.3	041.4		271.6	017.6226	0053.8	100.2	39.41
066.0	001.9000	0413.2	041.8		271.3	017.3475	0054.2	099.6	39.48
067.0	001.9000	0417.6	042.0		271.0	017.0295	0054.6	099.1	39.51
068.0	001.9000	0416.0	041.9		270.6	016.6501	0055.1	098.9	39.48
069.0	001.9000	0410.8	041.7		270.1	016.2423	0055.6	098.9	39.40
070.0	001.9000	0403.6	041.3		269.7	016.0415	0056.2	098.9	39.36
071.0	001.8962	0397.4	041.0		269.2	015.9308	0056.8	099.0	39.34
072.0	001.8962	0391.1	040.8		268.8	015.8220	0057.3	099.0	39.32
073.0	001.8924	0383.3	040.4		268.3	015.7117	0057.9	099.2	39.28
074.0	001.8886	0374.5	040.0		267.9	015.6021	0058.5	099.4	39.23
075.0	001.8886	0366.5	039.6		267.4	015.4959	0059.0	099.6	39.17
076.0	001.8848	0361.7	039.4		267.0	015.3949	0059.3	099.8	39.13
077.0	001.8810	0363.2	039.4		266.6	015.3017	0059.4	099.6	39.15
078.0	001.8773	0368.3	039.7		266.3	015.2111	0059.5	099.3	39.19
079.0	001.8773	0374.4	039.9		265.9	015.1197	0059.5	098.9	39.24
080.0	001.8735	0381.1	040.2		265.5	015.0264	0059.3	098.6	39.28
081.0	001.8697	0386.2	040.4		265.1	014.9306	0059.2	098.3	39.29
082.0	001.8622	0391.0	040.6		264.7	014.8334	0059.0	098.1	39.30
083.0	001.8584	0396.1	040.8		264.3	014.7353	0058.7	097.9	39.31
084.0	001.8509	0401.2	041.0		263.9	014.6361	0058.7	097.7	39.32
085.0	001.8472	0407.6	041.3		263.4	014.5355	0058.8	097.4	39.35
086.0	001.8434	0413.5	041.5		263.0	014.4337	0059.0	097.2	39.37
087.0	001.8359	0418.7	041.7		262.6	014.3314	0059.3	097.1	39.38
088.0	001.8322	0422.5	041.9		262.1	014.2290	0059.8	097.0	39.39
089.0	001.8248	0425.8	042.0		261.7	014.1272	0060.3	097.0	39.38
090.0	001.8210	0429.0	042.1		261.2	014.0250	0060.9	097.0	39.38
091.0	001.8210	0432.2	042.3		260.8	013.9224	0061.5	096.9	39.38
092.0	001.8210	0434.1	042.4		260.4	013.8216	0062.1	097.0	39.35
093.0	001.8210	0435.4	042.4		259.9	013.7325	0062.6	097.1	39.32
094.0	001.8210	0436.0	042.5		259.5	013.6999	0063.2	097.3	39.30
095.0	001.8210	0437.3	042.5		259.1	013.6672	0063.9	097.4	39.29
096.0	001.8248	0439.5	042.7		258.6	013.6339	0064.4	097.5	39.28
097.0	001.8248	0442.4	042.8		258.2	013.6004	0064.7	097.7	39.25
098.0	001.8248	0444.5	042.9		257.8	013.5677	0064.9	097.8	39.22
099.0	001.8248	0444.0	042.9		257.4	013.5373	0065.0	098.1	39.15
100.0	001.8248	0442.7	042.8		257.0	013.5080	0065.3	098.5	39.08
101.0	001.8322	0441.7	042.8		256.6	013.4784	0065.6	098.8	39.01
102.0	001.8397	0441.7	042.8		256.2	013.4484	0065.9	099.1	38.95
103.0	001.8472	0443.2	042.9		255.8	013.4173	0066.2	099.3	38.90
104.0	001.8547	0445.1	043.1		255.4	013.3861	0066.5	099.6	38.85
105.0	001.8622	0446.1	043.1		255.0	013.3561	0066.8	099.9	38.79
106.0	001.8697	0446.3	043.2		254.6	013.3275	0067.2	100.3	38.72
107.0	001.8773	0446.0	043.2		254.2	013.3000	0067.6	100.6	38.65
108.0	001.8848	0445.3	043.2		253.9	013.2734	0067.8	101.1	38.56
109.0	001.8924	0444.6	043.2		253.5	013.2474	0067.9	101.5	38.47
110.0	001.9000	0443.2	043.2		253.2	013.2227	0068.0	102.0	38.37
111.0	001.8848	0441.4	043.0		252.9	013.2020	0068.0	102.6	38.24
112.0	001.8697	0438.9	042.8		252.7	013.1831	0068.1	103.2	38.12
113.0	001.8547	0435.9	042.6		252.4	013.1654	0068.2	103.9	37.99
114.0	001.8397	0433.4	042.4		252.2	013.1480	0068.3	104.5	37.86
115.0	001.8248	0432.4	042.3		251.9	013.1293	0068.4	105.1	37.74
116.0	001.8136	0433.4	042.3		251.7	013.1081	0068.6	105.6	37.64
117.0	001.7988	0435.7	042.4		251.4	013.0862	0068.7	106.1	37.55
118.0	001.7840	0438.4	042.4		251.1	013.0643	0068.9	106.6	37.45
119.0	001.7693	0440.6	042.4		250.8	013.0438	0069.0	107.1	37.34
120.0	001.7547	0442.6	042.5		250.5	013.0241	0069.2	107.7	37.24
121.0	001.7547	0443.8	042.5		250.3	013.0040	0069.4	108.2	37.14
122.0	001.7547	0444.2	042.5		250.0	012.9856	0069.7	108.8	37.04
123.0	001.7547	0443.8	042.5		249.8	012.9689	0070.0	109.4	36.93
124.0	001.7547	0443.1	042.5		249.6	012.9533	0070.4	110.0	36.82
125.0	001.7547	0442.2	042.4		249.4	012.9388	0070.7	110.7	36.71
126.0	001.7510	0441.1	042.4		249.2	012.9257	0071.1	111.3	36.60

127.0	001.7510	0440.2	042.3	249.0	012.9123	0071.4	112.0	36.49
128.0	001.7510	0439.7	042.3	248.8	012.8989	0071.8	112.6	36.38
129.0	001.7510	0439.5	042.3	248.7	012.8855	0072.1	113.3	36.27
130.0	001.7510	0439.1	042.3	248.5	012.8731	0072.4	113.9	36.15
131.0	001.7474	0438.4	042.2	248.3	012.8624	0072.6	114.6	36.03
132.0	001.7438	0437.7	042.2	248.2	012.8523	0072.8	115.3	35.91
133.0	001.7401	0437.5	042.2	248.1	012.8419	0073.0	116.0	35.80
134.0	001.7365	0437.7	042.2	247.9	012.8314	0073.1	116.7	35.68
135.0	001.7328	0438.0	042.1	247.8	012.8215	0073.3	117.3	35.56
136.0	001.7292	0438.2	042.1	247.7	012.8122	0073.4	118.0	35.44
137.0	001.7256	0438.8	042.1	247.5	012.8028	0073.6	118.7	35.32
138.0	001.7220	0440.1	042.2	247.4	012.7928	0073.7	119.4	35.20
139.0	001.7184	0441.8	042.3	247.3	012.7827	0073.8	120.1	35.08
140.0	001.7147	0443.2	042.3	247.1	012.7737	0073.9	120.8	34.96
141.0	001.7147	0443.8	042.3	247.0	012.7657	0073.9	121.5	34.84
142.0	001.7147	0443.6	042.3	246.9	012.7595	0074.0	122.2	34.71

10-18-2023 Terrain Data: GLOBE 30 Sec FMOver Analysis

WJYJ BLED20011024AAG

WCQS

Channel = 201C2
 Max ERP = 26.5 kW
 RCAMSL = 372 m
 N. Lat. 35 43 34.50
 W. Lng. 81 08 51.30
 Protected
 60 dBu

Channel = 201C3
 Max ERP = 1.9 kW
 RCAMSL = 1100 m
 N. Lat. 35 35 23.30
 W. Lng. 82 40 25.40
 Interfering
 40 dBu

Azimuth (degrees)	ERP (kW)	HAAT (m)	Dist (km)	Azimuth (degrees)	ERP (kW)	HAAT (m)	Dist (km)	Actual (dBu)	IX (km)
204.0	014.1993	0076.5	030.3	095.3	001.8221	0437.6	126.4	35.65	
205.0	013.7376	0077.3	030.2	095.2	001.8217	0437.5	125.9	35.76	
206.0	013.2835	0078.0	030.1	095.0	001.8212	0437.3	125.4	35.87	
207.0	012.8370	0078.1	029.9	094.9	001.8210	0437.1	125.0	35.97	
208.0	012.3982	0078.0	029.7	094.7	001.8210	0436.7	124.6	36.06	
209.0	011.9670	0078.5	029.5	094.5	001.8210	0436.4	124.2	36.15	
210.0	011.5434	0079.5	029.4	094.4	001.8210	0436.3	123.8	36.26	
211.0	011.5434	0080.1	029.5	094.3	001.8210	0436.2	123.3	36.39	
212.0	011.5434	0079.7	029.5	094.2	001.8210	0436.1	122.8	36.49	
213.0	011.5434	0078.6	029.3	094.0	001.8210	0436.0	122.5	36.59	
214.0	011.5434	0077.8	029.1	093.8	001.8210	0435.9	122.1	36.68	
215.0	011.5434	0077.1	029.0	093.7	001.8210	0435.8	121.7	36.77	
216.0	011.5434	0075.9	028.8	093.5	001.8210	0435.7	121.4	36.85	
217.0	011.5434	0074.2	028.5	093.2	001.8210	0435.5	121.1	36.91	
218.0	011.5434	0072.5	028.2	093.0	001.8210	0435.3	120.9	36.97	
219.0	011.5434	0071.4	028.0	092.8	001.8210	0435.2	120.6	37.04	
220.0	011.5434	0071.1	028.0	092.6	001.8210	0435.0	120.2	37.13	
221.0	011.5434	0071.3	028.0	092.5	001.8210	0434.8	119.8	37.23	
222.0	011.5434	0071.2	028.0	092.3	001.8210	0434.6	119.4	37.32	
223.0	011.5434	0070.3	027.8	092.1	001.8210	0434.3	119.2	37.38	
224.0	011.5434	0068.9	027.6	091.9	001.8210	0433.9	118.9	37.42	
225.0	011.5434	0067.9	027.4	091.7	001.8210	0433.4	118.7	37.47	
226.0	011.6135	0067.4	027.4	091.5	001.8210	0433.0	118.4	37.54	
227.0	011.6837	0067.0	027.3	091.3	001.8210	0432.7	118.1	37.62	
228.0	011.7542	0066.5	027.3	091.1	001.8210	0432.4	117.8	37.68	
229.0	011.8249	0065.8	027.2	090.9	001.8210	0432.1	117.5	37.74	
230.0	011.8959	0065.4	027.2	090.8	001.8210	0431.5	117.2	37.80	

231.0	011.9314	0065.7	027.2		090.6	001.8210	0431.0	116.8	37.88
232.0	011.9670	0066.4	027.4		090.5	001.8210	0430.6	116.4	37.98
233.0	012.0026	0067.1	027.5		090.3	001.8210	0430.1	116.0	38.07
234.0	012.0383	0067.4	027.6		090.2	001.8210	0429.6	115.7	38.14
235.0	012.0741	0067.3	027.6		090.0	001.8212	0428.9	115.4	38.20
236.0	012.1099	0067.3	027.6		089.8	001.8219	0428.3	115.1	38.26
237.0	012.1457	0067.8	027.7		089.6	001.8225	0427.8	114.7	38.33
238.0	012.1816	0068.5	027.8		089.4	001.8231	0427.2	114.4	38.42
239.0	012.2176	0069.3	028.0		089.3	001.8237	0426.7	114.0	38.50
240.0	012.2536	0070.5	028.2		089.1	001.8243	0426.2	113.5	38.61
241.0	012.3258	0072.0	028.5		089.0	001.8249	0425.7	113.0	38.73
242.0	012.3982	0073.5	028.9		088.8	001.8260	0425.2	112.5	38.85
243.0	012.4708	0074.4	029.0		088.6	001.8274	0424.6	112.1	38.93
244.0	012.5436	0074.6	029.1		088.4	001.8290	0423.9	111.8	38.99
245.0	012.6166	0074.2	029.1		088.2	001.8308	0423.1	111.6	39.02
246.0	012.6899	0074.2	029.1		088.0	001.8324	0422.3	111.4	39.06
247.0	012.7634	0074.0	029.1		087.7	001.8333	0421.5	111.2	39.09
248.0	012.8370	0073.1	029.0		087.4	001.8343	0420.7	111.1	39.09
249.0	012.9109	0071.5	028.8		087.2	001.8354	0419.3	111.2	39.04
250.0	012.9850	0069.7	028.5		086.9	001.8370	0418.1	111.3	38.98
251.0	013.0593	0068.9	028.4		086.6	001.8389	0416.7	111.3	38.95
252.0	013.1338	0068.4	028.3		086.4	001.8408	0415.4	111.2	38.94
253.0	013.2086	0068.0	028.3		086.1	001.8427	0414.0	111.1	38.93
254.0	013.2835	0067.7	028.3		085.9	001.8440	0412.7	111.0	38.92
255.0	013.3587	0066.8	028.1		085.6	001.8450	0411.1	111.0	38.87
256.0	013.4340	0066.0	028.0		085.3	001.8459	0409.6	111.0	38.83
257.0	013.5096	0065.3	027.9		085.1	001.8469	0408.0	111.0	38.78
258.0	013.5854	0064.8	027.9		084.8	001.8478	0406.5	111.0	38.74
259.0	013.6614	0064.0	027.8		084.6	001.8488	0404.9	111.1	38.68
260.0	013.7376	0062.5	027.5		084.3	001.8498	0403.3	111.3	38.59
261.0	013.9675	0061.2	027.4		084.1	001.8507	0401.6	111.3	38.52
262.0	014.1993	0059.9	027.3		083.8	001.8524	0399.9	111.4	38.45
263.0	014.4331	0059.0	027.2		083.6	001.8542	0398.6	111.5	38.40
264.0	014.6687	0058.7	027.2		083.3	001.8560	0397.6	111.5	38.38
265.0	014.9063	0059.1	027.4		083.1	001.8579	0396.4	111.3	38.40
266.0	015.1457	0059.5	027.6		082.8	001.8591	0395.1	111.1	38.41
267.0	015.3871	0059.3	027.6		082.6	001.8600	0393.8	111.1	38.38
268.0	015.6303	0058.3	027.5		082.3	001.8610	0392.6	111.2	38.31
269.0	015.8755	0057.1	027.4		082.1	001.8619	0391.4	111.4	38.22
270.0	016.1226	0055.8	027.2		081.9	001.8633	0390.3	111.7	38.13
271.0	017.0449	0054.5	027.3		081.6	001.8651	0389.1	111.7	38.10
272.0	017.9929	0053.4	027.3		081.4	001.8670	0387.9	111.7	38.07
273.0	018.9665	0052.1	027.3		081.1	001.8688	0386.8	111.8	38.02
274.0	019.9657	0050.7	027.3		080.9	001.8701	0385.7	111.9	37.95
275.0	020.9906	0049.3	027.2		080.7	001.8710	0384.5	112.0	37.88
276.0	022.0412	0048.7	027.4		080.4	001.8720	0383.2	112.0	37.85
277.0	023.1174	0048.6	027.7		080.1	001.8730	0381.8	111.9	37.84
278.0	024.2193	0048.8	028.0		079.8	001.8741	0380.2	111.7	37.85
279.0	025.3468	0048.7	028.2		079.6	001.8751	0378.5	111.6	37.82
280.0	026.5000	0048.0	028.3		079.3	001.8761	0376.6	111.7	37.74
281.0	026.5000	0047.6	028.2		079.1	001.8769	0375.0	112.0	37.62
282.0	026.5000	0047.4	028.2		078.9	001.8773	0373.5	112.2	37.51
283.0	026.5000	0047.4	028.2		078.6	001.8773	0372.1	112.4	37.41
284.0	026.5000	0047.6	028.2		078.4	001.8773	0370.6	112.6	37.32
285.0	026.5000	0047.6	028.2		078.2	001.8773	0369.2	112.7	37.21
286.0	026.5000	0048.0	028.3		077.9	001.8776	0367.8	112.9	37.13
287.0	026.5000	0049.0	028.6		077.6	001.8787	0366.2	112.9	37.07
288.0	026.5000	0050.1	028.9		077.3	001.8798	0364.6	112.8	37.02
289.0	026.5000	0051.0	029.2		077.0	001.8809	0363.3	112.9	36.96
290.0	026.5000	0051.4	029.3		076.8	001.8818	0362.5	113.1	36.89
291.0	026.5000	0051.3	029.3		076.6	001.8826	0362.0	113.3	36.79
292.0	026.5000	0051.2	029.2		076.4	001.8834	0361.7	113.7	36.70
293.0	026.5000	0050.9	029.2		076.2	001.8841	0361.6	114.0	36.61

294.0	026.5000	0050.5	029.1		076.0	001.8848	0361.7	114.4	36.51
295.0	026.5000	0050.2	029.0		075.8	001.8854	0362.1	114.8	36.44
296.0	026.5000	0050.0	028.9		075.7	001.8861	0362.7	115.1	36.37
297.0	026.5000	0050.0	028.9		075.5	001.8868	0363.6	115.5	36.32
298.0	026.5000	0050.4	029.0		075.3	001.8877	0364.8	115.7	36.31
299.0	026.5000	0051.6	029.3		075.0	001.8886	0366.8	115.8	36.36
300.0	026.5000	0052.6	029.6		074.7	001.8886	0368.9	116.0	36.40
301.0	026.5000	0052.4	029.6		074.5	001.8886	0370.2	116.4	36.34
302.0	026.5000	0051.0	029.2		074.5	001.8886	0370.5	117.0	36.19
303.0	026.5000	0049.4	028.7		074.5	001.8886	0370.6	117.7	36.02
304.0	026.5000	0048.7	028.5		074.4	001.8886	0371.3	118.2	35.92
305.0	026.5000	0049.0	028.6		074.2	001.8886	0372.8	118.5	35.89
306.0	026.5000	0049.9	028.9		073.9	001.8888	0375.0	118.7	35.91
307.0	026.5000	0050.9	029.1		073.7	001.8898	0377.3	119.0	35.92
308.0	026.5000	0051.6	029.4		073.5	001.8907	0379.3	119.3	35.92
309.0	026.5000	0052.3	029.5		073.2	001.8915	0381.2	119.6	35.90
310.0	026.5000	0053.0	029.7		073.0	001.8923	0383.0	119.9	35.87
311.0	026.5000	0053.7	029.9		072.8	001.8931	0384.8	120.2	35.84
312.0	026.5000	0054.6	030.2		072.6	001.8940	0386.7	120.5	35.82
313.0	026.5000	0055.6	030.4		072.4	001.8949	0388.5	120.9	35.79
314.0	026.5000	0056.9	030.7		072.1	001.8958	0390.4	121.2	35.77
315.0	026.5000	0058.5	031.1		071.8	001.8962	0392.4	121.5	35.76
316.0	026.5000	0060.0	031.5		071.5	001.8962	0394.2	121.8	35.73
317.0	026.5000	0061.3	031.8		071.3	001.8962	0395.7	122.1	35.68
318.0	026.5000	0061.9	031.9		071.1	001.8962	0396.6	122.6	35.59
319.0	026.5000	0061.7	031.9		071.1	001.8962	0397.1	123.1	35.47
320.0	026.5000	0061.1	031.7		071.0	001.8962	0397.3	123.7	35.34
321.0	026.5000	0060.3	031.6		071.0	001.8962	0397.4	124.3	35.19
322.0	026.5000	0059.3	031.3		071.0	001.8962	0397.4	124.9	35.04
323.0	026.5000	0057.7	030.9		071.1	001.8962	0396.9	125.5	34.86

-----|-----

Figure 1: Allocation Study
Western North Carolina Public

FMCommander Full Allocation Study - GLOBE 30 Sec

10-18-2023

WCQS CH 201 C3 DA
Lat= 35 35 23.30, Lng= 82 40 25.4
1.9 kW 359.5 m HAAT, 1100 m COR

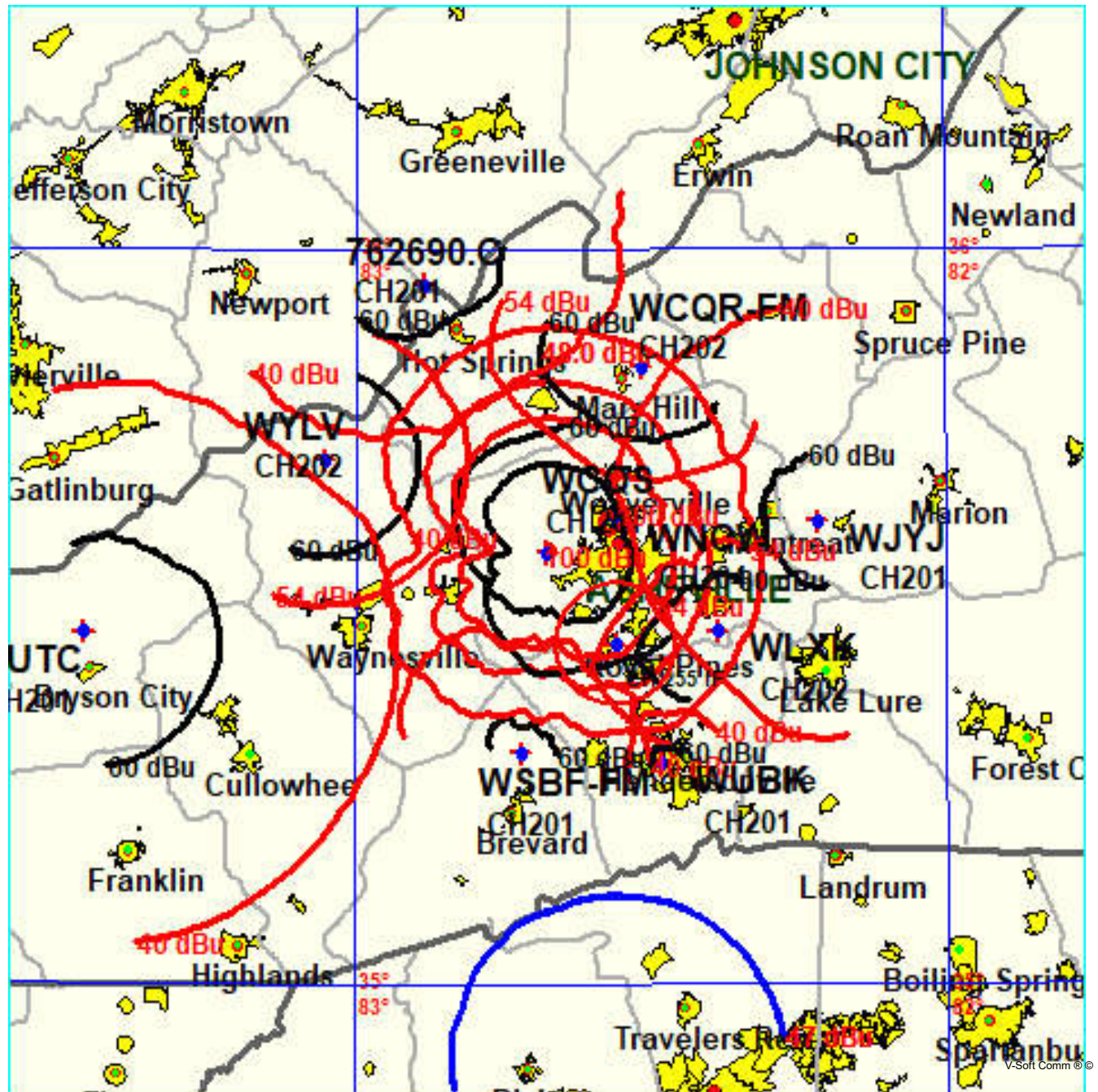


Figure 2: Allocation Study: WCQR-FM
Western North Carolina Public

FMCommander Single Allocation Study - 10-18-2023 - GLOBE 30 Sec
WCQS's Overlaps (In= 4.07 km, Out= 0.06 km)

WCQS CH 201 C3 DA
Lat= 35 35 23.30, Lng= 82 40 25.40
1.9 kW 359.5 m HAAT, 1100 m COR
Prot.= 60 dBu, Intef.= 54 dBu

WCQR-FM CH 202 C2 DA BLED19961120KB
Lat= 36 25 53.30, Lng= 82 08 15.40
1.2 kW 650 m HAAT, 1276 m COR
Prot.= 60 dBu, Intef.= 54 dBu

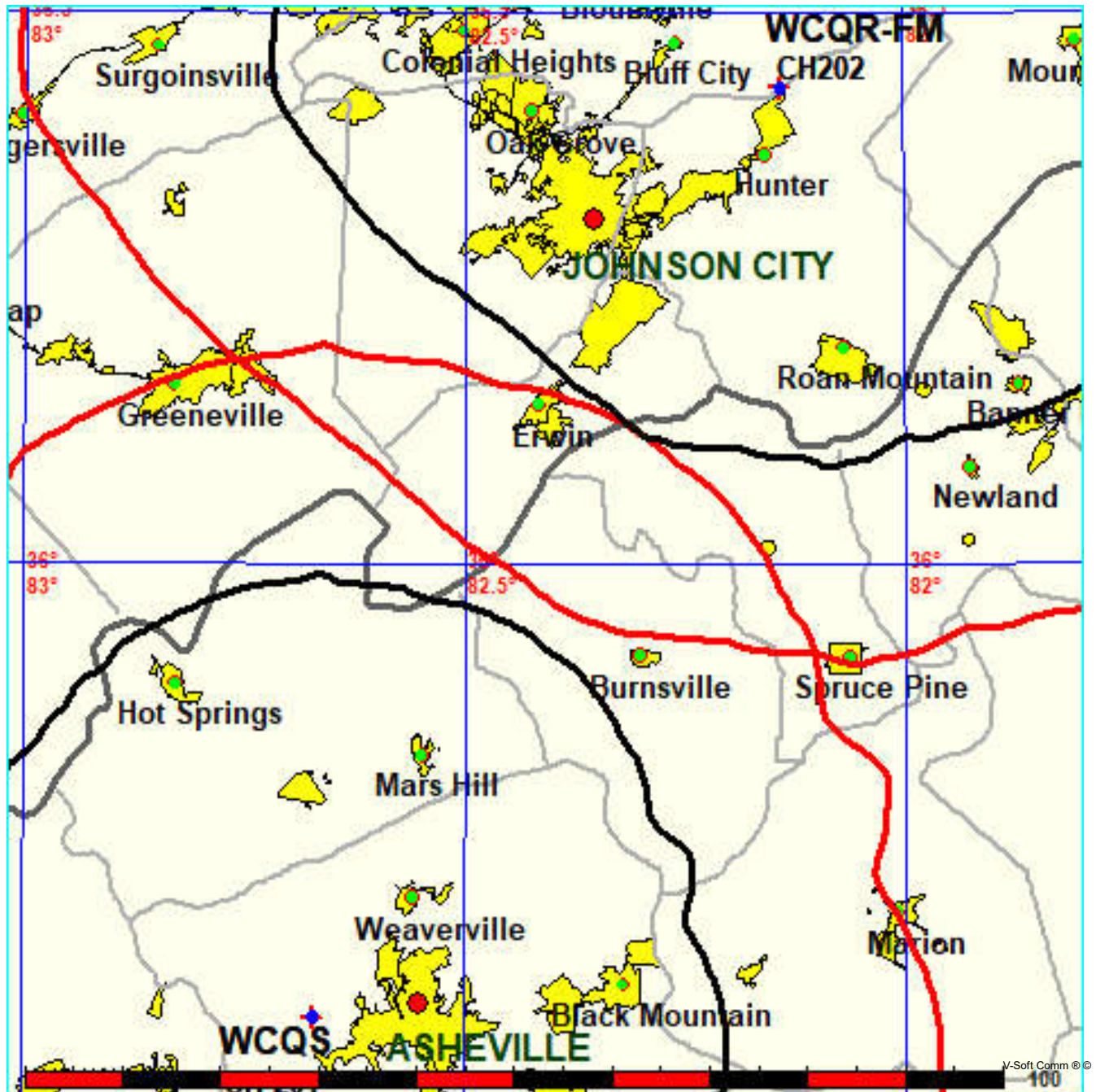


Figure 2A: Allocation Study: WCQR-FM Detail
Western North Carolina Public

FMCommander Single Allocation Study - 10-18-2023 - GLOBE 30 Sec
WCQS's Overlaps (In= 4.07 km, Out= 0.06 km)

WCQS CH 201 C3 DA
Lat= 35 35 23.30, Lng= 82 40 25.40
1.9 kW 359.5 m HAAT, 1100 m COR
Prot.= 60 dBu, Intef.= 54 dBu

WCQR-FM CH 202 C2 DA BLED19961120KB
Lat= 36 25 53.30, Lng= 82 08 15.40
1.2 kW 650 m HAAT, 1276 m COR
Prot.= 60 dBu, Intef.= 54 dBu

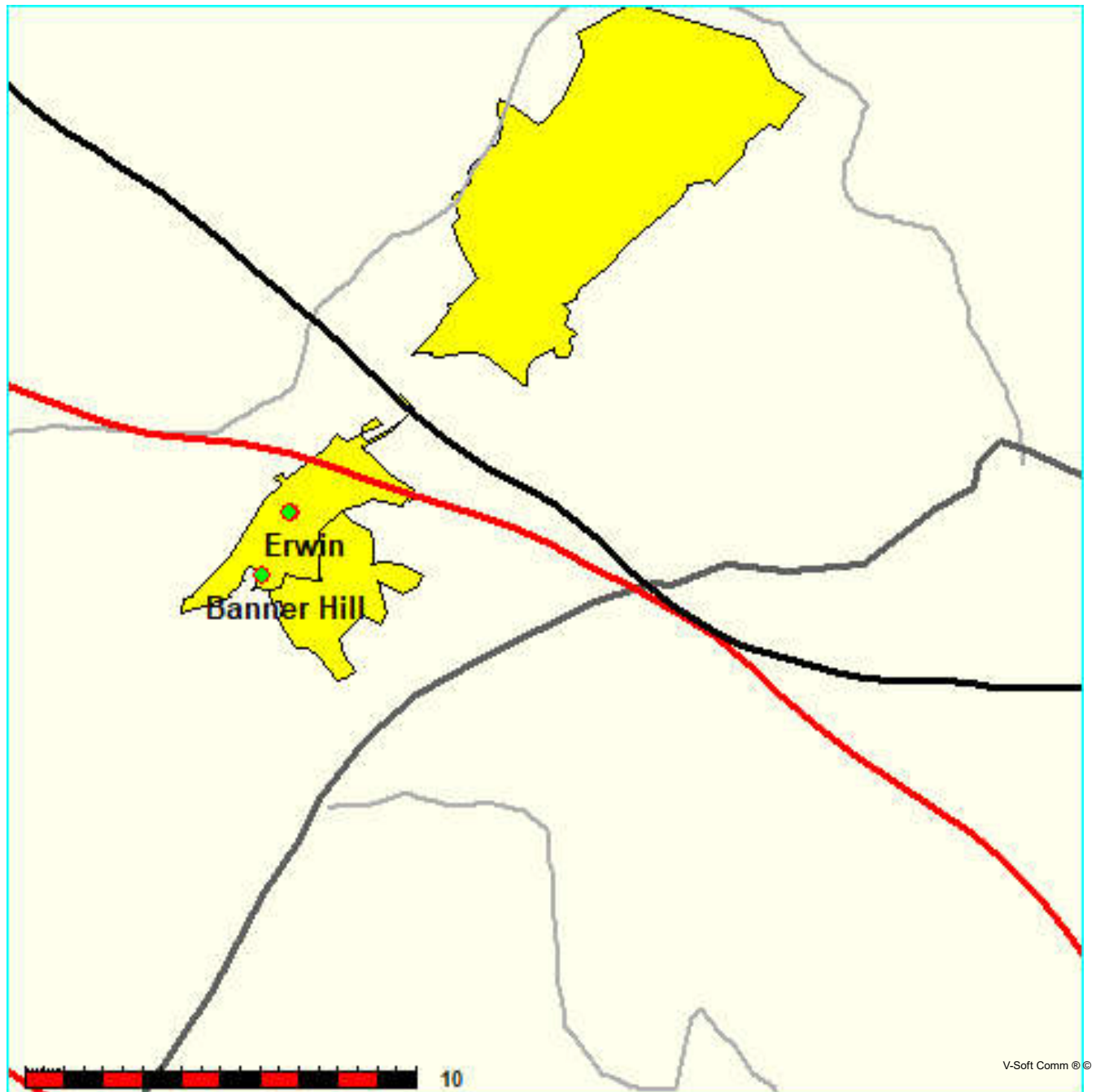


Figure 3: Allocation Study: WLXK
Western North Carolina Public

FMCommander Single Allocation Study - 10-18-2023 - GLOBE 30 Sec
WCQS's Overlaps (In= 6.99 km, Out= 0.06 km)

WCQS CH 201 C3 DA

Lat= 35 35 23.30, Lng= 82 40 25.40

1.9 kW 359.5 m HAAT, 1100 m COR

Prot.= 60 dBu, Intef.= 54 dBu

WLXK CH 202 C2 DA BLED19950221KD

Lat= 35 13 52.40, Lng= 81 42 56.40

50.0 kW 92 m HAAT, 343 m COR

Prot.= 60 dBu, Intef.= 54 dBu

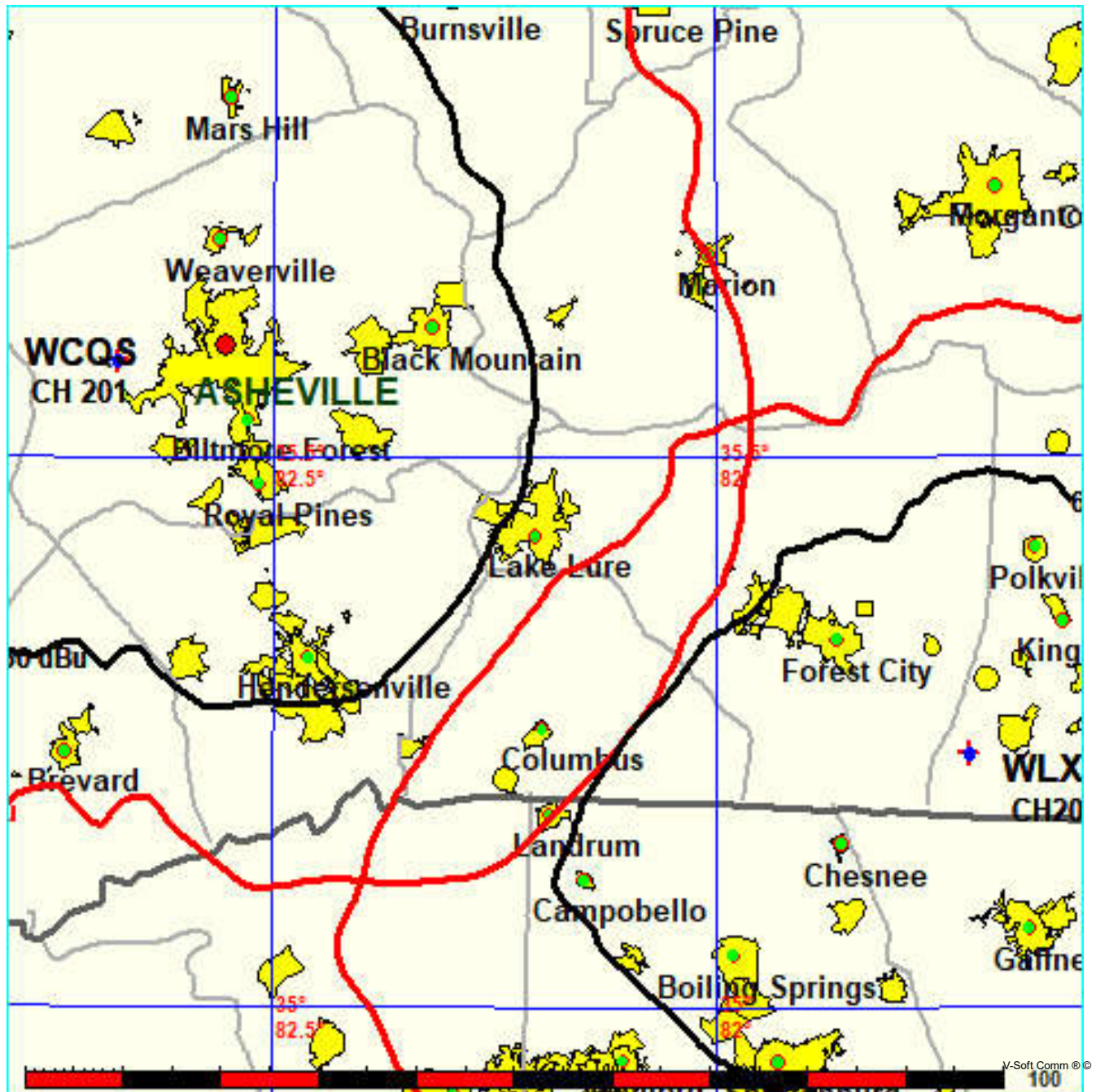


Figure 3A: Allocation Study: WLXK Detail
Western North Carolina Public

FMCommander Single Allocation Study - 10-18-2023 - GLOBE 30 Sec
WCQS's Overlaps (In= 6.99 km, Out= 0.06 km)

WCQS CH 201 C3 DA

Lat= 35 35 23.30, Lng= 82 40 25.40

1.9 kW 359.5 m HAAT, 1100 m COR

Prot.= 60 dBu, Intef.= 54 dBu

WLXK CH 202 C2 DA BLED19950221KD

Lat= 35 13 52.40, Lng= 81 42 56.40

50.0 kW 92 m HAAT, 343 m COR

Prot.= 60 dBu, Intef.= 54 dBu

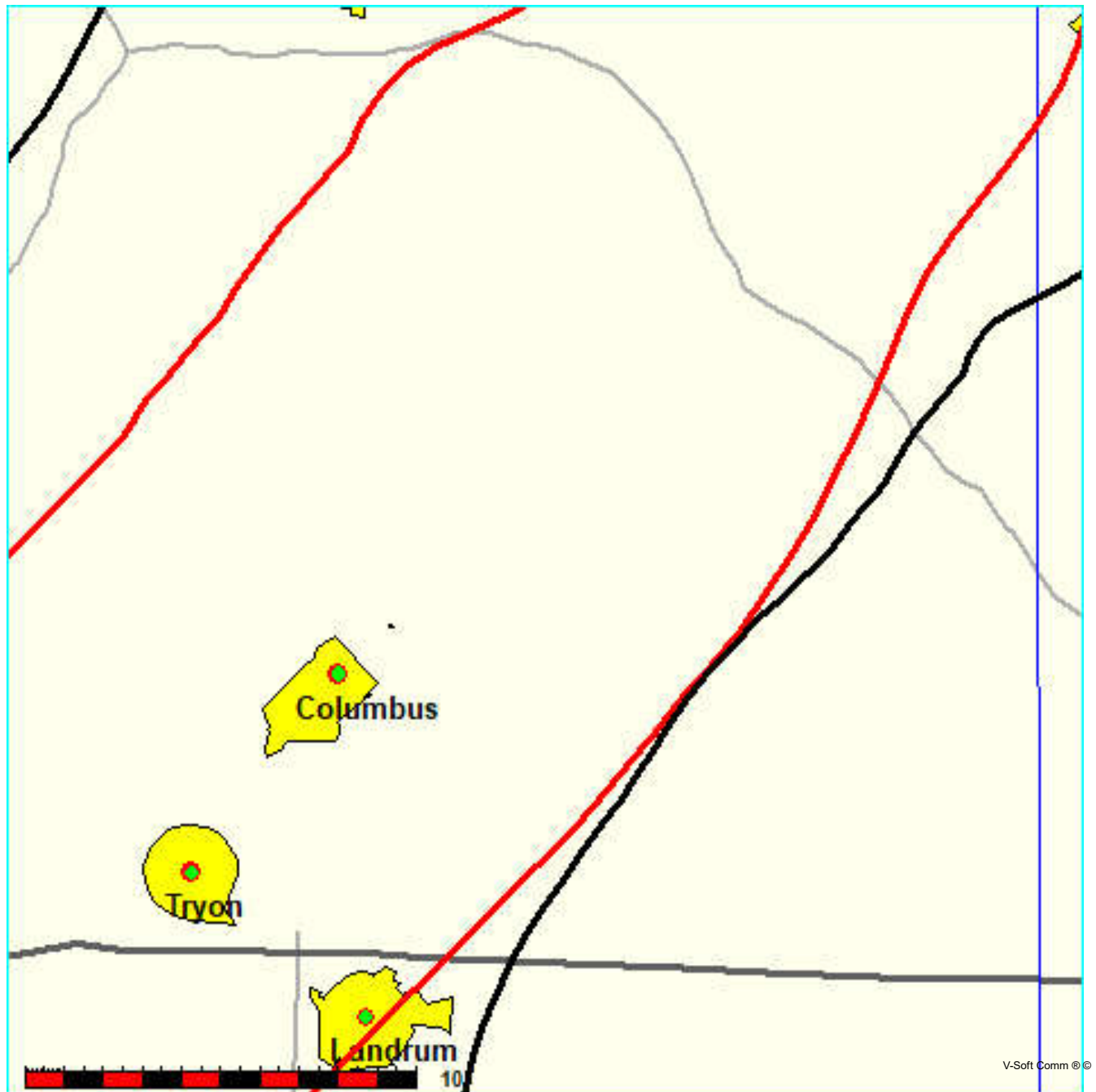


Figure 4: Allocation Study: WSBF-FM
Western North Carolina Public

FMCommander Single Allocation Study - 10-18-2023 - GLOBE 30 Sec
WCQS's Overlaps (In= 10.57 km, Out= 1.42 km)

WCQS CH 201 C3 DA
Lat= 35 35 23.30, Lng= 82 40 25.40
1.9 kW 359.5 m HAAT, 1100 m COR
Prot.= 60 dBu, Intef.= 40 dBu

WSBF-FM CH 201 A BLED19920327KB
Lat= 34 40 42.30, Lng= 82 49 14.50
3.0 kW 61 m HAAT, 307 m COR
Prot.= 60 dBu, Intef.= 40 dBu

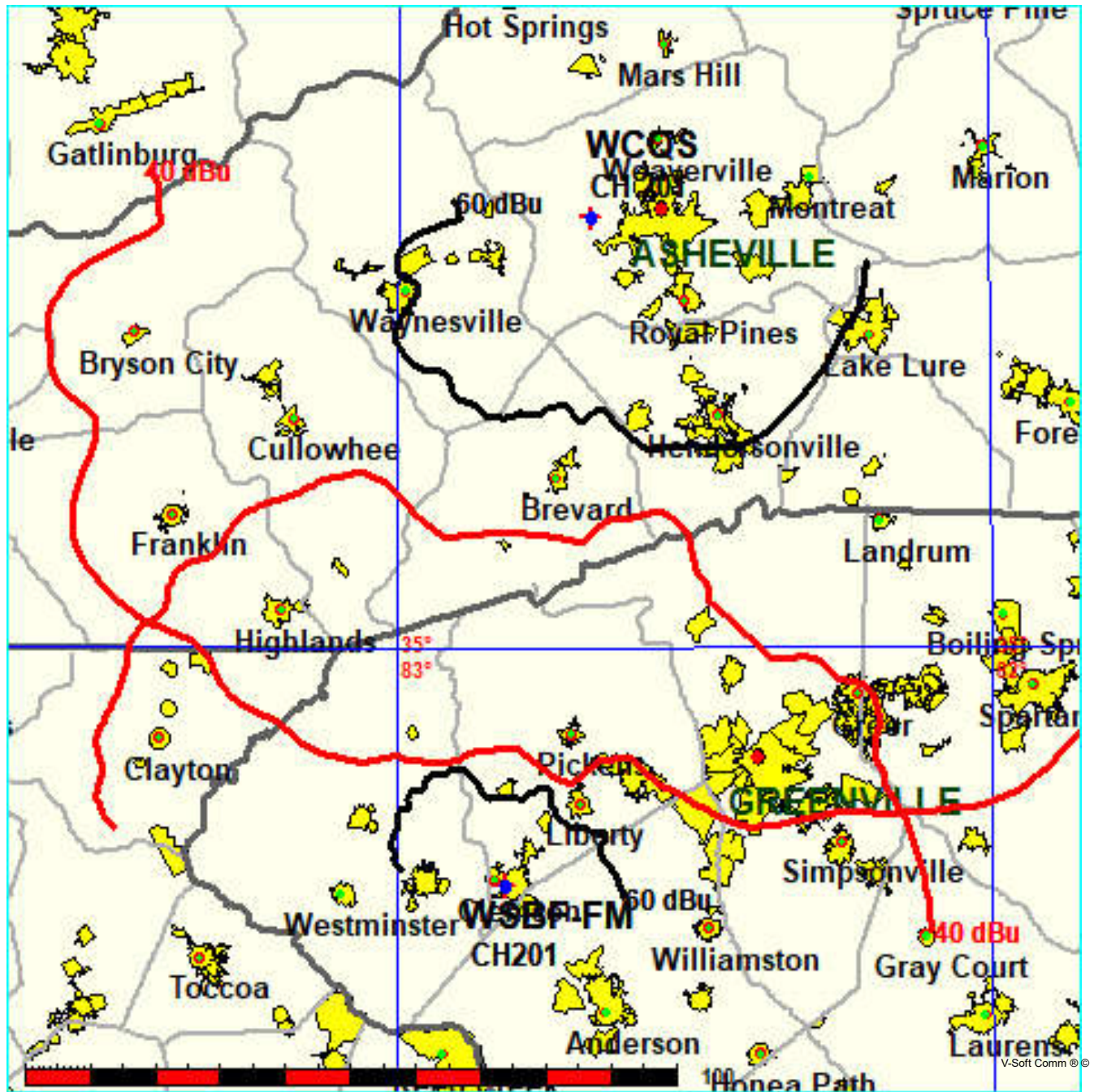


Figure 4A: Allocation Study: WSBF-FM Detail
Western North Carolina Public

FMCommander Single Allocation Study - 10-18-2023 - GLOBE 30 Sec
WCQS's Overlaps (In= 10.57 km, Out= 1.42 km)

WCQS CH 201 C3 DA

Lat= 35 35 23.30, Lng= 82 40 25.40

1.9 kW 359.5 m HAAT, 1100 m COR

Prot.= 60 dBu, Intef.= 40 dBu

WSBF-FM CH 201 A BLED19920327KB

Lat= 34 40 42.30, Lng= 82 49 14.50

3.0 kW 61 m HAAT, 307 m COR

Prot.= 60 dBu, Intef.= 40 dBu

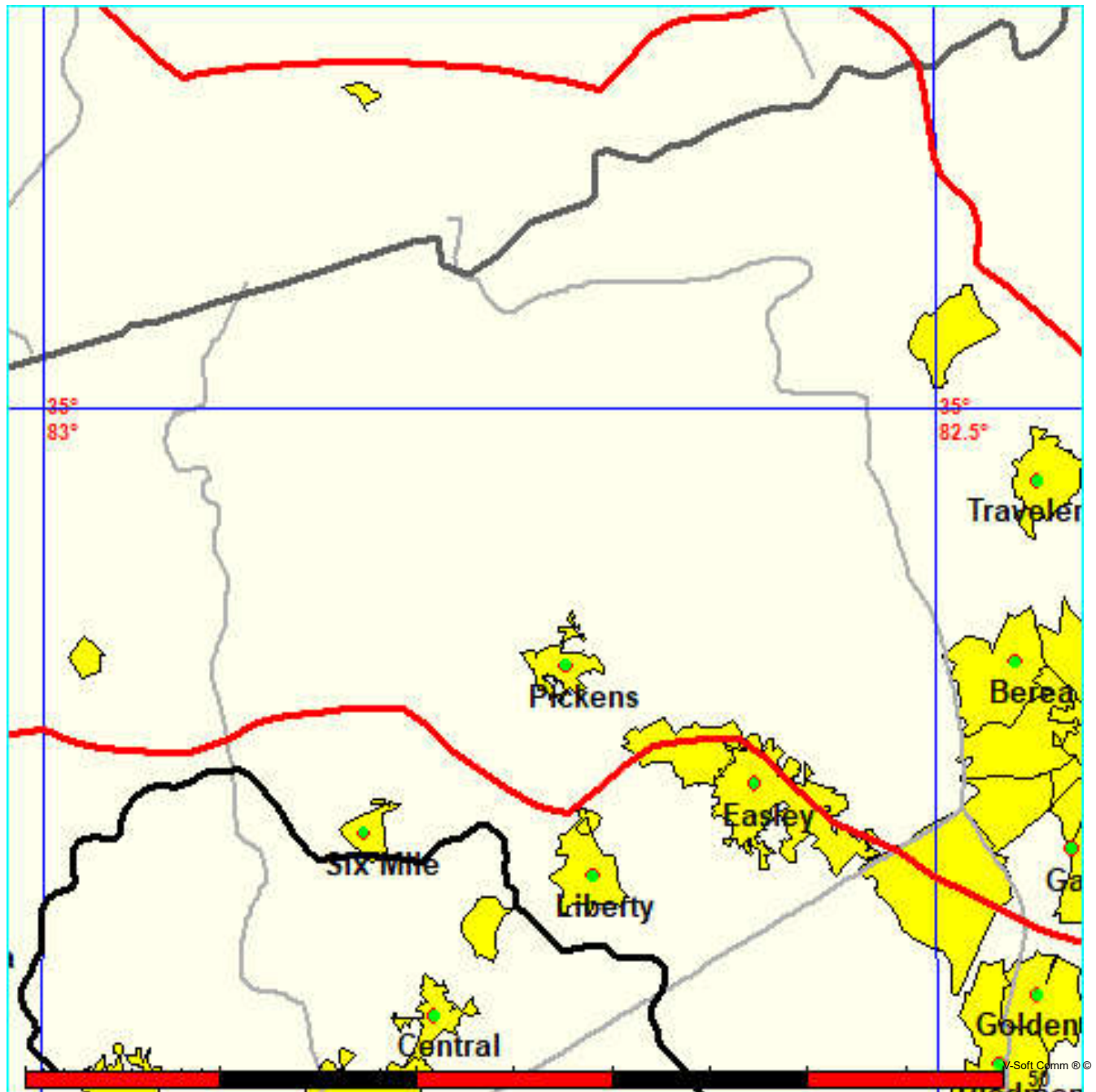


Figure 5: Allocation Study: WJYJ
Western North Carolina Public

FMCommander Single Allocation Study - 10-18-2023 - GLOBE 30 Sec
WCQS's Overlaps (In= 2.34 km, Out= 3.45 km)

WCQS CH 201 C3 DA

Lat= 35 35 23.30, Lng= 82 40 25.40

1.9 kW 359.5 m HAAT, 1100 m COR

Prot.= 60 dBu, Intef.= 40 dBu

WJYJ CH 201 C2 DA BLED20011024AAG

Lat= 35 43 34.50, Lng= 81 08 51.30

26.5 kW 77 m HAAT, 372 m COR

Prot.= 60 dBu, Intef.= 40 dBu

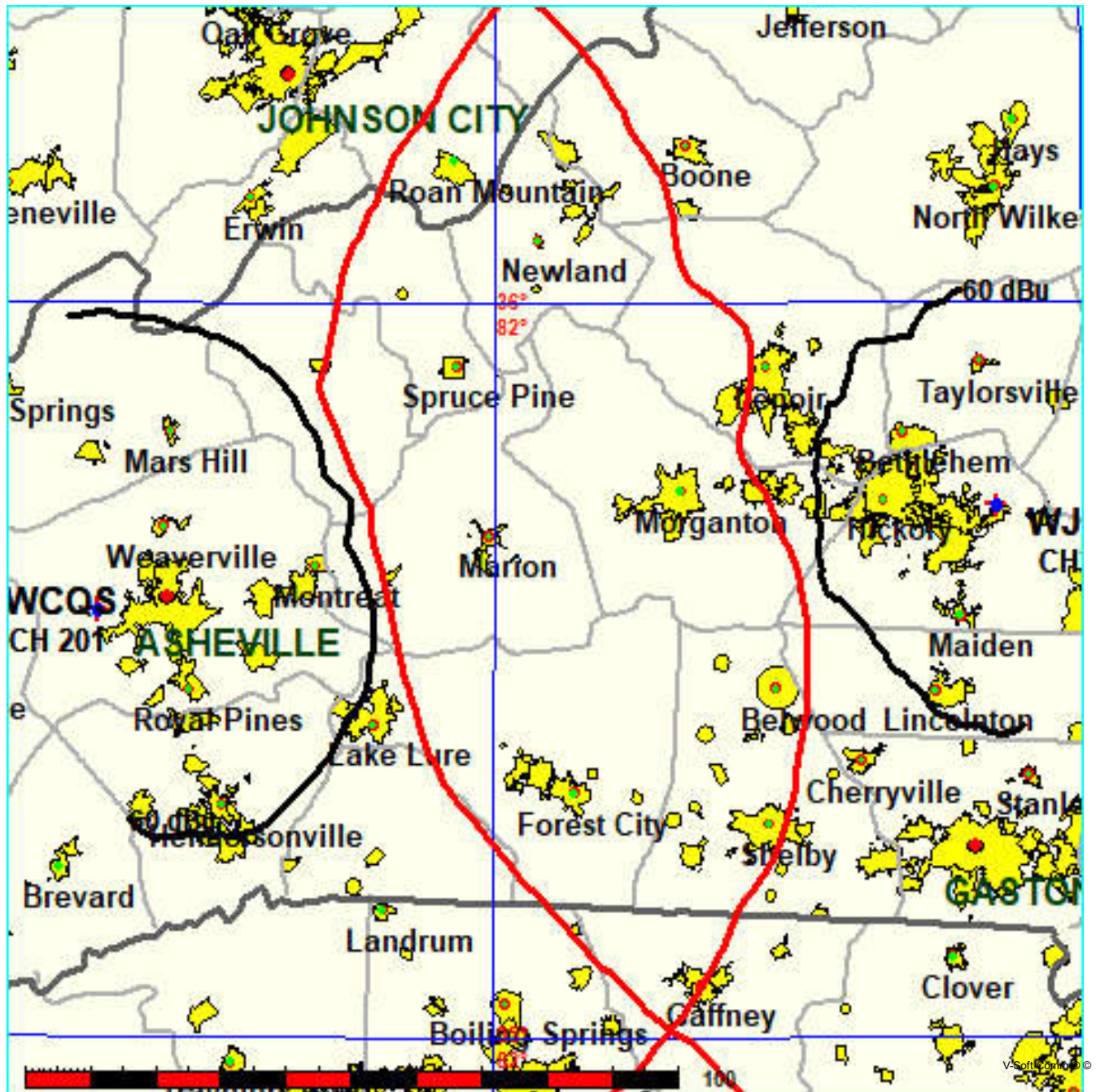


Figure 6: Antenna Pattern
Pre-Rotation Antenna Pattern....

Azimuth (deg)	Relative Field
0.0	1.0
10.0	0.99
20.0	0.988
30.0	0.999
40.0	1.0
50.0	1.0
60.0	1.0
70.0	1.0
80.0	0.993
90.0	0.979
100.0	0.98
110.0	1.0
120.0	0.961
130.0	0.96
140.0	0.95
150.0	0.95
160.0	0.85
170.0	0.79
180.0	0.645
190.0	0.6
200.0	0.61
210.0	0.75
220.0	0.9
230.0	1.0
240.0	1.0
250.0	1.0
260.0	1.0
270.0	1.0
280.0	1.0
290.0	1.0
300.0	1.0
310.0	1.0
320.0	1.0
330.0	1.0
340.0	1.0
350.0	1.0

Rotation Angle = 0

