

Table 1 - 74.807 Channel Study**NEW MIAMI-DADE, FL - RDS****MINOR CHANGE October 2023 (Ch.258L1 proposed)**

Chan	Class	Call Letters	Type	Status	City	State	Country	Owner	Bearing TO (deg)	Distance (km)	Req. Dist. (km)	Clearance (km)	Field Strength (dBu)
256	C1	WEDR	FM	L-L2C	MIAMI	FL	US	COX RADIO, LLC	31.3	41.8	73.0	-31.2	74.1
258	L1	WHIM-LP	FL	L-L2C	HIALEAH GARDENS		US	IGLESIA MISIONERA PF	41.0	25.3	24.0	1.3	
258	L1	WBUJ-LP	FL	L-L2C	MIAMI SHORES		US	BARRY UNIVERSITY	40.8	35.5	24.0	11.5	
258	A	WLLY-FM	FM	L-L2C	PALM BEACH GARDEN	FL	US	GLADES MEDIA COMP.	15.6	129.5	67.0	62.5	
260	C0	WKIS	FM	L-L2C	BOCA RATON	FL	US	AUDACY LICENSE, LLC	29.4	42.2	84.0	-41.8	73.9

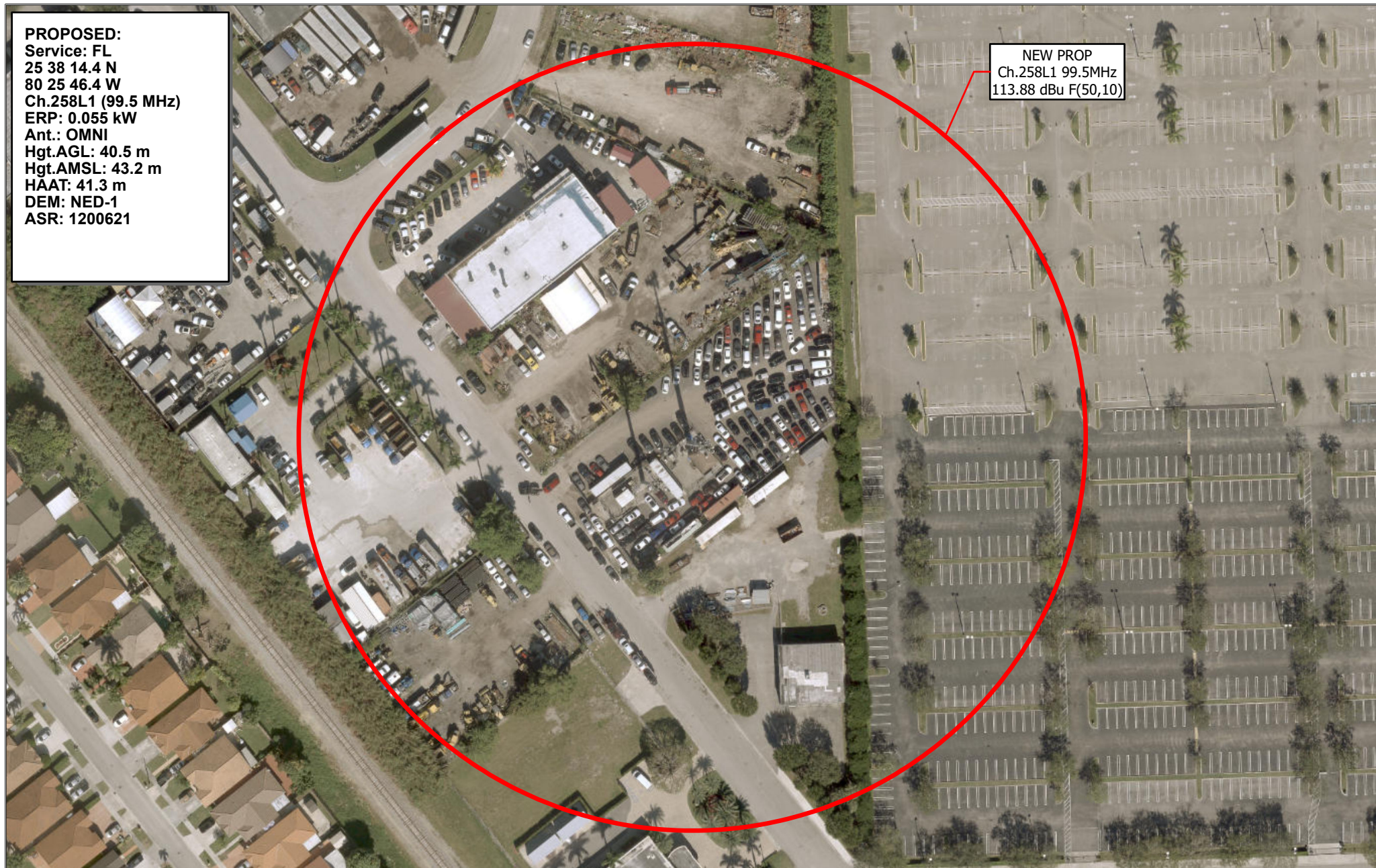
Terrain data DEM: NED-1

NOTE: Second adjacent-channel waiver showing with respect to WKIS.

Second adjacent WKIS has a field strength of 73.9 dBu at the proposed NEW site. Therefore the proposed translator's interfering contour is the 114 dBu F(50,10) contour. At 55 watts ERP and with the antenna mounted at 40.5 meters AGL the proposed translator's 114 dBu F(50,10) extends 105 meters horizontally from the tower. However, due to mounting height and the vertical elevation pattern of the proposed antenna, the 114 dBu interfering contour will remain far above ground level and will not contain any structures or population. The translator's 114 dBu contour will remain at least 9.8 meters above ground level. Therefore this proposal is compliant with the allowance of Rule 74.1204(d).

PROPOSED:
Service: FL
25 38 14.4 N
80 25 46.4 W
Ch.258L1 (99.5 MHz)
ERP: 0.055 kW
Ant.: OMNI
Hgt.AGL: 40.5 m
Hgt.AMSL: 43.2 m
HAAT: 41.3 m
DEM: NED-1
ASR: 1200621

NEW PROP
Ch.258L1 99.5MHz
113.88 dBu F(50,10)



NEW MIAMI-DADE, FL Proposed Channel 258L1 (99.5 MHz)
RDS - MINOR CHANGE

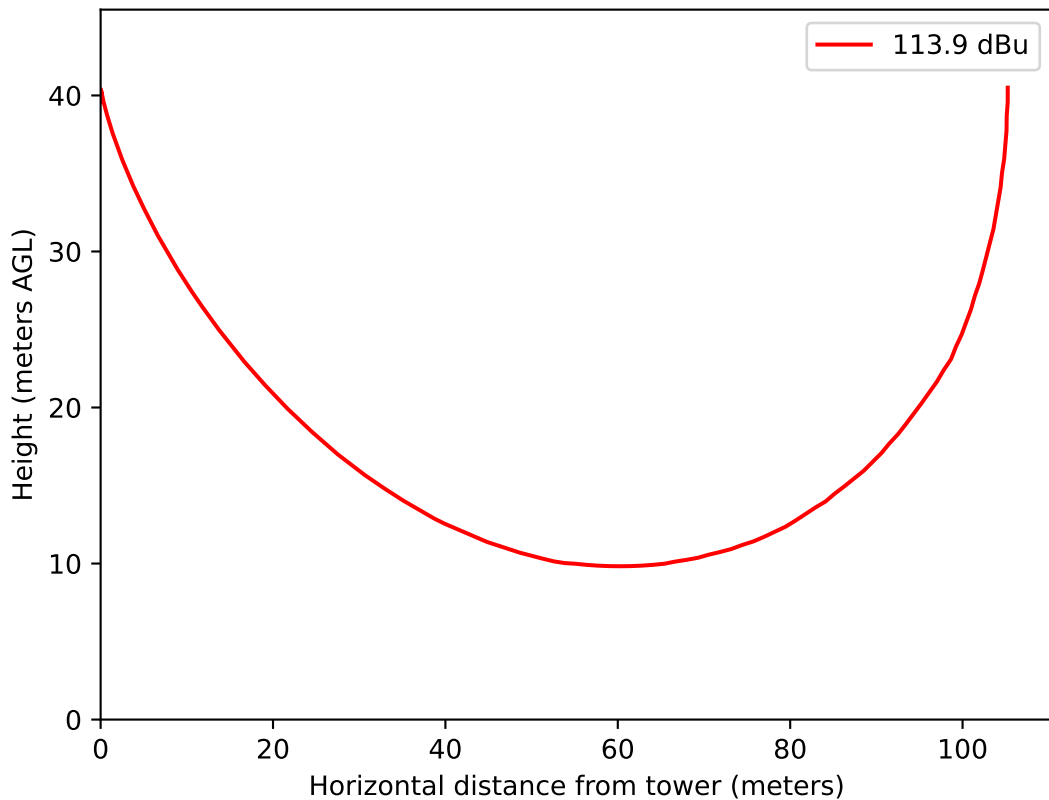
0 15 30 60 Meters

Figure 4

Second adjacent-channel waiver showing with respect to WKIS. WKIS has a field strength of 73.9 dBu F(50,50) at the proposed site.

Robert J. Robbins, Ph.D.
www.radiodataservices.com
radiodataservices@radiodataservices.com
(305) 234-9309

Interference bubble



Source	File No.	Fac.ID	Height AGL(m)	Antenna type	Bays	Horizontal ERP (kw)	Vertical ERP (kw)	within 10 meters distance	% controlled environment limit (1000 μ W/cm ²)	Max. PD	% uncontrolled environment limit (200 μ W/cm ²)	Distance to maximum PD (m)
NEW	TBD	TBD	40.5	TBD TBD	1	0.055	0.055	1.5	0.1	1.5	0.7	11
TOTAL								1.5	0.1	1.5	0.7	