



**Pitzman's Co.**

est. 1859

Of Surveyors & Engineers

## ANTENNA AZIMUTH REPORT

Audacy Inc.  
Mr. Jay Pierce  
1220 Olive St. 3<sup>rd</sup> Floor  
St. Louis, MO 63103

Re: Antenna Alignment  
532 De Baliviere Ave  
St. Louis, MO 63112

Mr. Pierce,

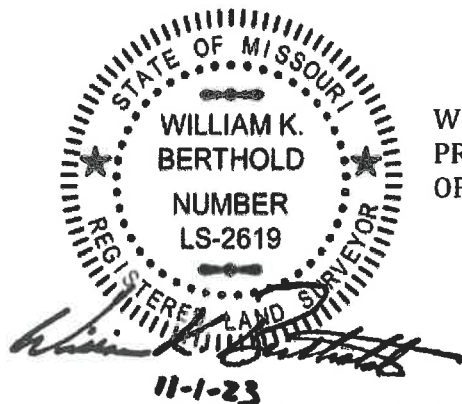
On October 31, 2023, Pitzman's Company of Surveyors and Engineers, performed a survey to determine the Azimuth of an existing antenna located at 532 De Baliviere Ave, in the city of St. Louis, MO. Which call sign is WHHL-FM, Frequency 104.1 MHZ, and Model Number SHPX-6AE-HW-DA Manufactured by Electronics Research Inc.

NOTE: THE AZIMUTH SHOWN HEREON WAS ESTABLISHED BY G.P.S. REAL TIME KINEMATIC NETWORK FOR NAD 83. THESE OBSERVATIONS WERE CONDUCTED USING A CELLULAR EQUIPPED TRIMBLE R12 ROVER AND A TRIMBLE TSC7 DATA COLLECTOR, UTILIZING THE MODOT VIRTUAL BASE RTK NETWORK, MISSOURI EAST ZONE 2041.

Number of Antennas Aligned: One WHHL-FM six-bay antenna.

Angular Alignment: State Plane Grid, Missouri NAD 83, East Zone converted Astronomic North at the tower center.

Azimuth formed by Antenna SHPX-6AE-HW-DA: = 6 degrees East of Geodetic North.



WILLIAM K. BERTHOLD  
PROFESSIONAL LAND SURVEYOR IN RESPONSIBLE CHARGE  
OF MISSOURI REGISTRATION NUMBER LS- 2619

P:\2023 PITZMAN'S\23-114 WHHL 104.1 Audacy Inc Survey Antenna Jay Pierce 532 De Baliviere Ave\08-Documents\23-114  
ANTENNA AZIMUTH LETTER Nov 01-2023 - Copy.docx

2725 Sutton Blvd.  
St. Louis, MO 63143  
p (314) 781-5665  
f (314) 781-1801  
pitzmans.com