

KGHD-LD STA FCC Status Report 1

May 8, 2022

KGHD-LD, Las Vegas, NV (Facility ID 130027) provides this report in response to the conditions set by LMS File No. 0000198030 for the special temporary authority granted by the FCC Video Division for FM 6 operation.

- KGHD-LD has not received any complaints of interference by any other licensed radio or television stations.
- KGHD-LD has not received any complaints of interference between the ATSC 3.0 NEXTGEN TV signal and the 87.75 MHz FM 6 signal by any viewers or the public.
- Reception of the ATSC 3.0 NEXTGEN TV service on KGHD-LD was confirmed by spectrum analyzer, SDR, and HDHomeRun tuner appliance.
- Reception of the 87.75 MHz FM 6 service on KGHD-LD was confirmed by a spectrum analyzer, SDR, and stock car radio.

Table 1 Lists the coordinates of each test location where both ATSC 3.0 NEXTGEN TV and FM 6 services on KGHD-LD were verified.

Table 2 lists the equipment used for measurement and monitoring of ATSC 3.0 NEXTGEN TV and FM 6 services on KGHD-LD.

Figure 1 shows a map of the locations where reception of both ATSC 3.0 NEXTGEN TV and FM 6 on KGHD-LD was verified along with the service contour.

Figure 2 shows a snapshot of the reception of the ATSC 3.0 NEXTGEN TV service on KGHD-LD using the SiliconDust HDHomeRun tuner and VLC decoder.

Figure 3 shows the Propagation Systems Inc. dual cross polarized log-periodic antenna array used by KGHD-LD.

Figure 4 shows the Visual Line of Sight between the transmitter site on Black Mountain Sloan and City of License, Las Vegas, Nevada.

Table 1

Location	Latitude	Longitude	Distance	Signal level	ATSC3 & FM?
KGHD-LD Transmitter Black Mtn Sloan	35.946110°	-115.043610°	0 Miles	All the RF	Yes
USPS 1001 Sunset Rd. Las Vegas, NV 89199	36.071906°	-115.133664°	10 Miles	-47 dBm	Yes
USPS 4885 E Carey Ave, Las Vegas, NV 89115	36.203101°	-115.067509°	17.8 Miles	-58 dBm	Yes
USPS 404 S Boulder Hwy, Henderson, NV 89015	36.035558°	-114.975626°	7.3 Miles	-65 dBm	Yes
USPS 3375 S Rainbow Blvd, Las Vegas, NV 89146	36.127998°	-115.243551°	16.8 Miles	-52 dBm	Yes
West Ann Road and Bruce Woodbury Beltway (CC215)	36.262534°	-115.324147°	26.9 Miles	-63 dBm	Yes
South Fort Apache and Blue Diamond Road (NV160)	36.020831°	-115.297358°	15.1 Miles	-55 dBm	Yes

Table 2

Item	Make	Model
Spectrum Analyzer	Siglent	SSA3021X
Tuner	Silicon Dust	HDHomeRun FLEX 4K
Software	VideoLAN	VLC Player
Receiver	RTL-SDR Blog	V3 SDR Dongle
Software	Airspy	SDR#
Antenna	Larsen	Low VHF ¼ wave Magnet Mount
Antenna	Stellar Labs	Low VHF outdoor folded dipole
Car Radio	Chevrolet	Stock 2016 Colorado

Figure 1



Figure 2

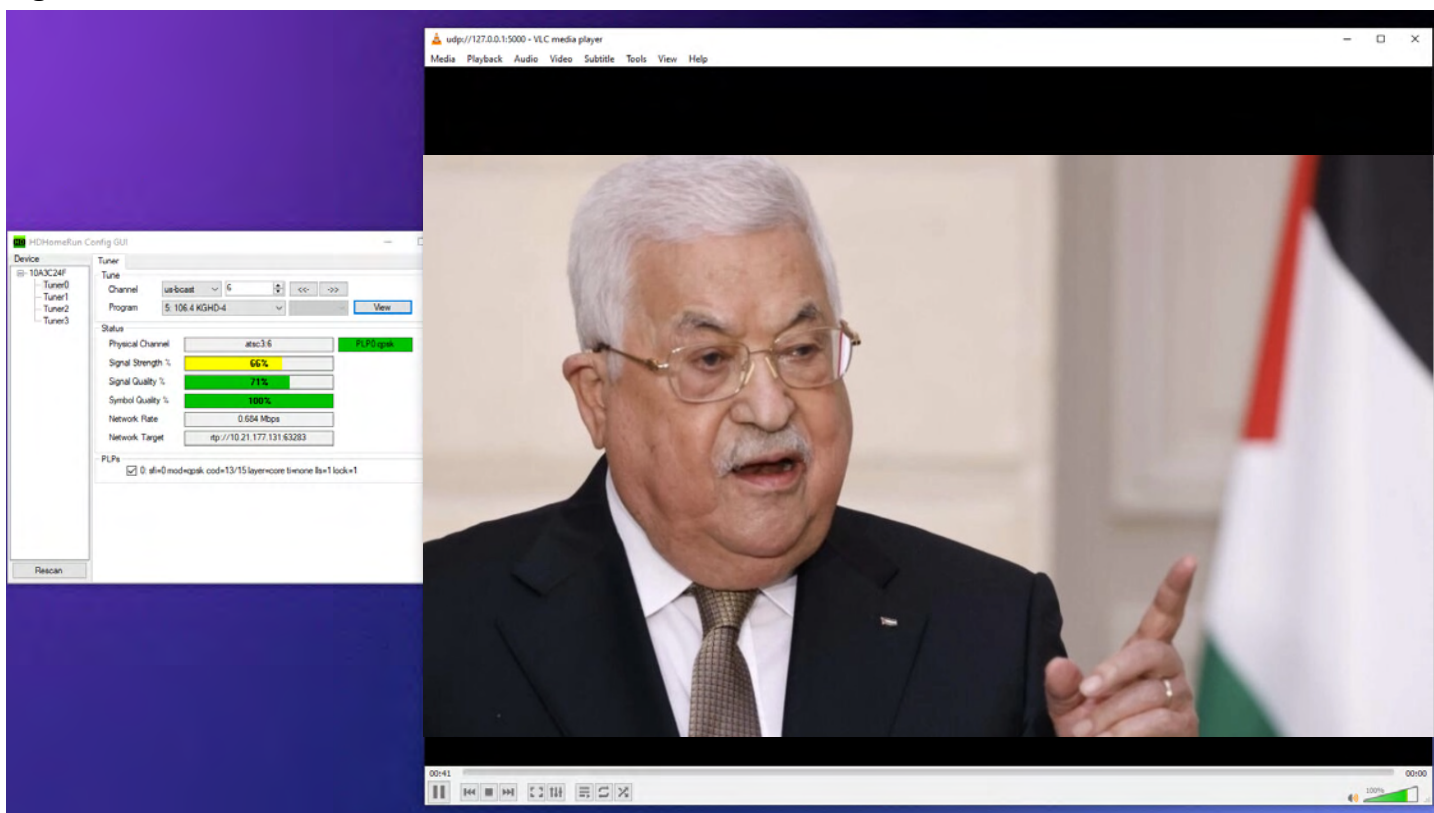


Figure 3

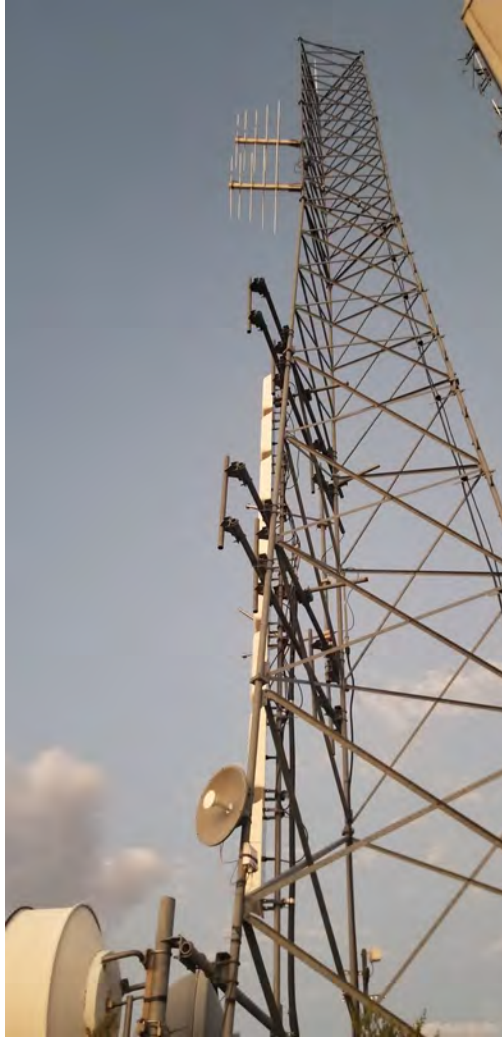


Figure 4

