

W293CZ Contour Protection Exhibit

A new Kathrein-Scala CA2-FM/CP directional antenna will be installed at an elevation of 47 meters above ground level with its main radiation lobe directed northeast. At the proposed effective radiated power of 250 watts, W293CZ will continue to protect the pertinent contours of all Co-channel and 1st-Adjacent facilities, as demonstrated in Figure 1. The predicted field strength of 2nd-Adjacent station WNKI is 78.6 dBu at the site as shown in Figure 2.

Figures 3 and 4 show the proposed 118.6 dBu free space horizontal plane contour of W293CZ, representing potential interference to WNKI. As can be seen in the recent satellite image of Figure 4, there are no habitable structures or major highways within this contour. The antenna of translator W295BY is collocated on the same antenna structure and would not be subject to interference from W293CZ.

This proposal complies with §74.1204(d) since no actual 2nd-adjacent interference is expected to occur in a populated area.

Figure 1
Co-Channel and 1st-Adjacent Contour Protection

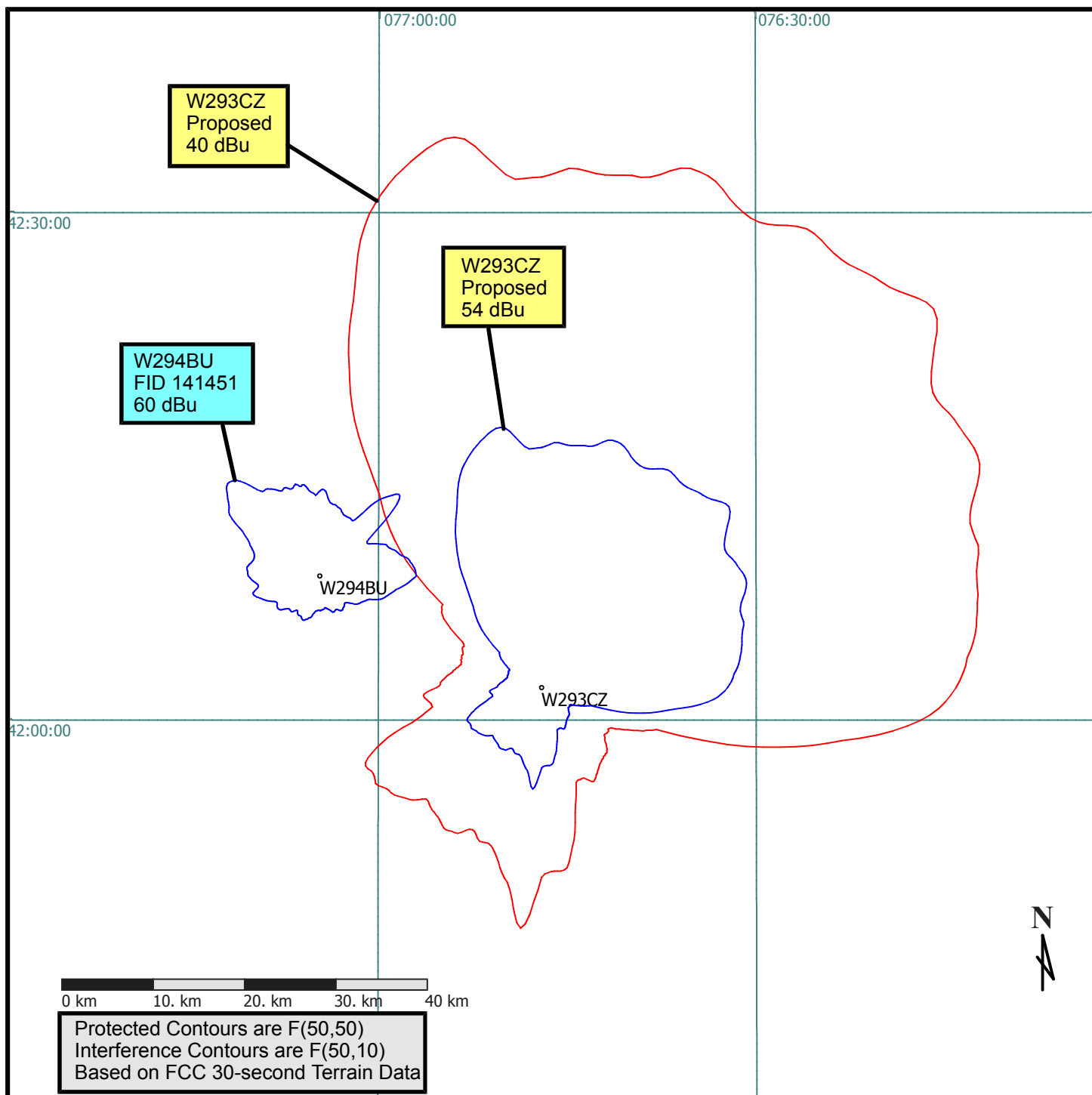


Figure 2
2nd- and 3rd-Adjacent Contour Protection

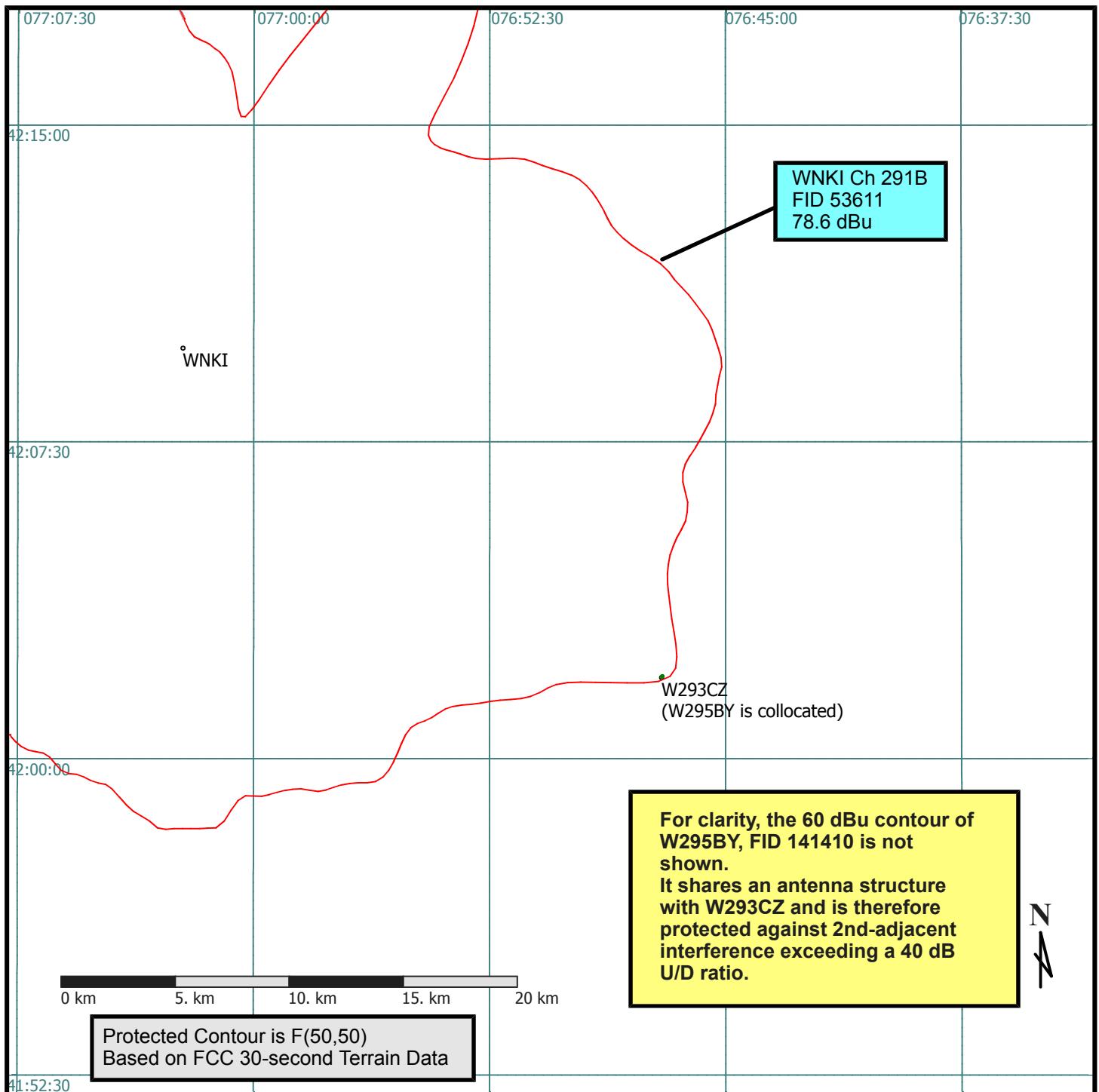


Figure 3
Topo Map of W293CZ Site Vicinity

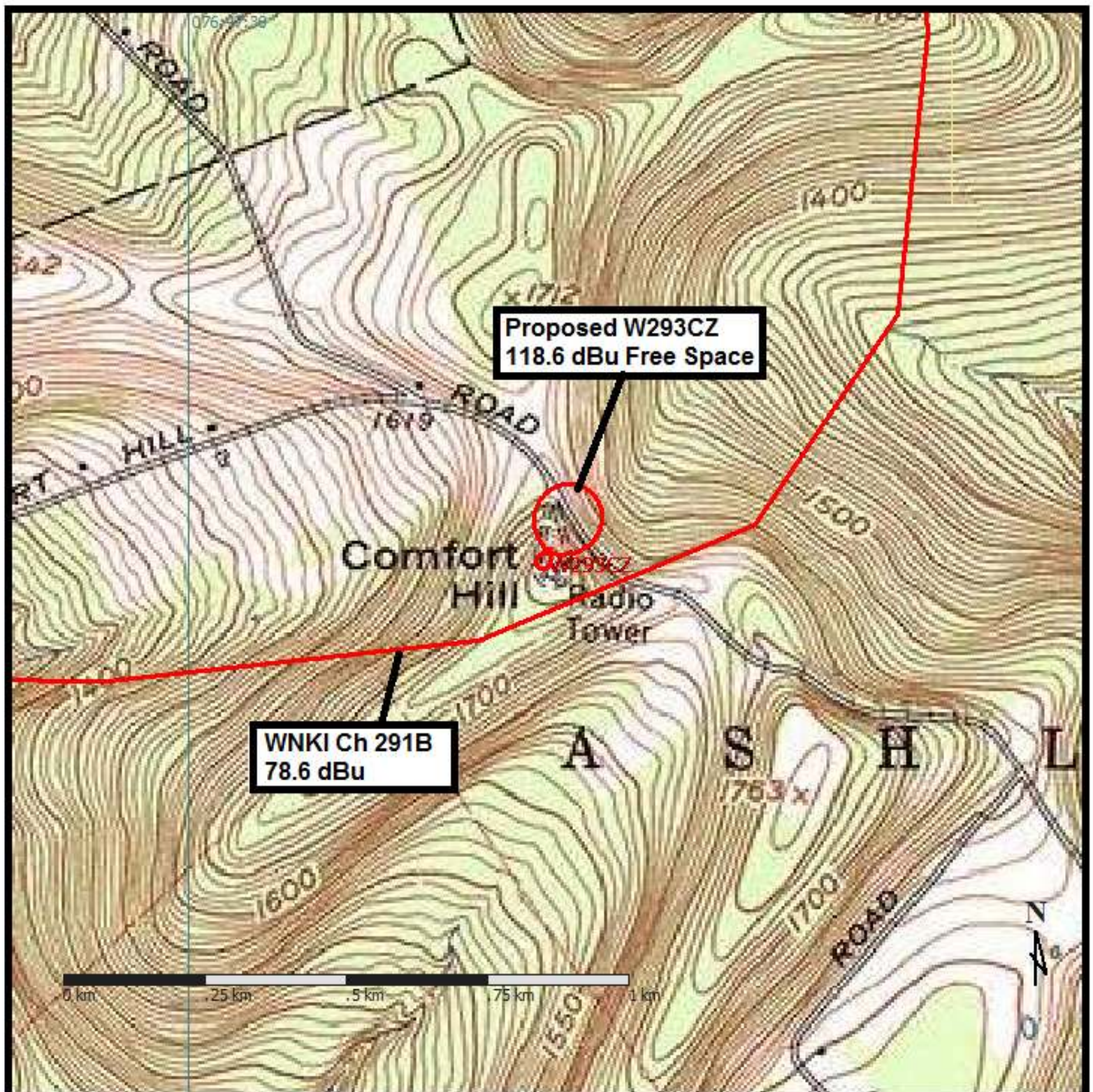


Figure 4 -- Satellite Imagery of 118.6 dBu Contour

