

Minor Change Request
KCZP-LP San Diego CA
FACID: 193134
BLL-20171211AEH

This instant application requests a minor change to the licensed facility to a new location 0.18km away on the authorized operating channel. The proposed location is a roof-top mounted mast and the station will operate on the assigned effective radiated power.

The proposed facility meets the mileage separation requirements for all co-channel and first adjacent stations. The licensed facility currently operates with a second-adjacent waiver to stations KHTS-FM Channel 227B and KMYI (FM) Channel 231B. The proposed facility requests continued approval for the existing waiver at the new location.

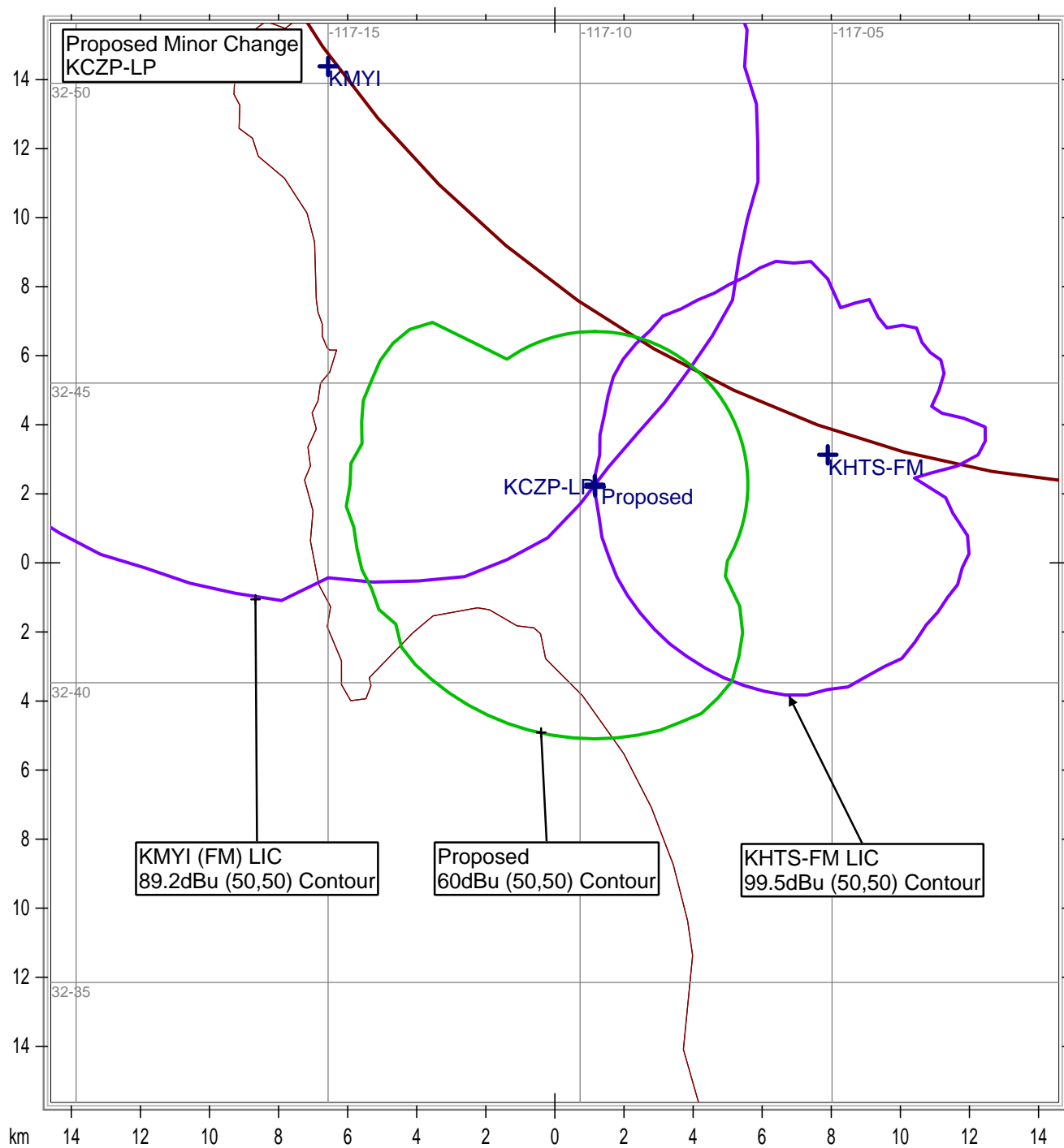
KHTS-FM is 7.66km away; therefore, an interference analysis has been conducted based on the U/D ratio of +40 dB at the proposed site. The signal of KHTS-FM is 99.5 dBu (50,50) making the relevant interfering contour of the proposed facility 139.5 dBu (50,10).

KMYI (FM) is 16.95km away; therefore, an interference analysis has been conducted based on the U/D ratio of +40 dB at the proposed site. The signal of KMYI (FM) is 89.2 dBu (50,50) making the relevant interfering contour of the proposed facility 129.2 dBu (50,10).

Calculations will be shown on the larger of the two facilities, that being the 129.2 dBu (50,10) contour, which will demonstrate compliance for both station U/D contours.

The applicant proposes the use of the currently licensed Shively 6812-B 1-bay circularly polarized antenna. The attached chart is an accurate depiction of the vertical pattern of the proposed antenna; data was provided by the manufacturer, and the calculations demonstrate that the interfering contour is incapable of reaching the elevation equal to the roof of the building any depression angle. Thus the interfering contour is incapable of being where humans could be present at any time.

Based on this showing, a waiver of Section 74.1204 is requested in accordance with *Living Way Ministries, Inc. (FCC 08-242)* on the basis of zero population in the area of interference.



State Borders Lat/Lon Grid

Shivley 6812B
1-Bay Circularly Polarized FM Antenna



Frequency =

93.7
128.2

 Mhz
Interfering Contour

dBu (50,10)

ERP=

50
11

 watts
Height =

m AGL

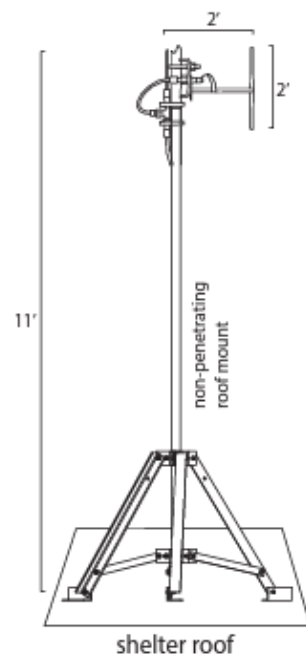
Depression Angle	Relative Field (o)	Effective Power (w)	Distance to Contour (m)	Distance from Antenna to Ground (m)	Clearance (m)
1	1.000	50.0	19.30	630.29	611
2	0.999	49.9	19.28	315.19	296
3	0.998	49.8	19.26	210.18	191
4	0.997	49.7	19.24	157.69	138
5	0.996	49.6	19.22	126.21	107
6	0.994	49.4	19.18	105.23	86
7	0.992	49.2	19.14	90.26	71
8	0.990	49.0	19.10	79.04	60
9	0.988	48.8	19.07	70.32	51
10	0.985	48.5	19.01	63.35	44
11	0.982	48.2	18.95	57.65	39
12	0.978	47.8	18.87	52.91	34
13	0.974	47.4	18.80	48.90	30
14	0.970	47.0	18.72	45.47	27
15	0.966	46.7	18.64	42.50	24
16	0.961	46.2	18.54	39.91	21
17	0.956	45.7	18.45	37.62	19
18	0.951	45.2	18.35	35.60	17
19	0.945	44.7	18.24	33.79	16
20	0.940	44.2	18.14	32.16	14
21	0.933	43.5	18.00	30.69	13
22	0.927	43.0	17.89	29.36	11
23	0.920	42.3	17.75	28.15	10
24	0.913	41.7	17.62	27.04	9
25	0.906	41.0	17.48	26.03	9
26	0.899	40.4	17.35	25.09	8
27	0.891	39.7	17.19	24.23	7
28	0.883	39.0	17.04	23.43	6
29	0.875	38.3	16.88	22.69	6
30	0.866	37.5	16.71	22.00	5
31	0.857	36.7	16.54	21.36	5
32	0.848	36.0	16.36	20.76	4
33	0.839	35.2	16.19	20.20	4
34	0.829	34.4	16.00	19.67	4
35	0.819	33.5	15.80	19.18	3
36	0.809	32.7	15.61	18.71	3
37	0.789	31.1	15.23	18.28	3
38	0.788	31.0	15.21	17.87	3
39	0.777	30.2	14.99	17.48	2
40	0.766	29.3	14.78	17.11	2
41	0.755	28.5	14.57	16.77	2
42	0.743	27.6	14.34	16.44	2
43	0.731	26.7	14.11	16.13	2
44	0.719	25.8	13.87	15.84	2
45	0.707	25.0	13.64	15.56	2

Depression Angle	Relative Field		Effective Power (w)	Distance to Contour (m)	Distance from Antenna to Ground (m)	Clearance (m)
46	0.695	50.000	24.2	13.41	15.29	2
47	0.682	50.000	23.3	13.16	15.04	2
48	0.669	50.000	22.4	12.91	14.80	2
49	0.656	50.000	21.5	12.66	14.58	2
50	0.643	50.000	20.7	12.41	14.36	2
51	0.629	50.000	19.8	12.14	14.15	2
52	0.616	50.000	19.0	11.89	13.96	2
53	0.602	50.000	18.1	11.62	13.77	2
54	0.588	50.000	17.3	11.35	13.60	2
55	0.573	50.000	16.4	11.06	13.43	2
56	0.559	50.000	15.6	10.79	13.27	2
57	0.545	50.000	14.9	10.52	13.12	3
58	0.530	50.000	14.0	10.23	12.97	3
59	0.515	50.000	13.3	9.94	12.83	3
60	0.500	50.000	12.5	9.65	12.70	3
61	0.485	50.000	11.8	9.36	12.58	3
62	0.469	50.000	11.0	9.05	12.46	3
63	0.454	50.000	10.3	8.76	12.35	4
64	0.438	50.000	9.6	8.45	12.24	4
65	0.423	50.000	8.9	8.16	12.14	4
66	0.407	50.000	8.3	7.85	12.04	4
67	0.391	50.000	7.6	7.55	11.95	4
68	0.375	50.000	7.0	7.24	11.86	5
69	0.358	50.000	6.4	6.91	11.78	5
70	0.342	50.000	5.8	6.60	11.71	5
71	0.325	50.000	5.3	6.27	11.63	5
72	0.309	50.000	4.8	5.96	11.57	6
73	0.292	50.000	4.3	5.63	11.50	6
74	0.276	50.000	3.8	5.33	11.44	6
75	0.259	50.000	3.4	5.00	11.39	6
76	0.242	50.000	2.9	4.67	11.34	7
77	0.225	50.000	2.5	4.34	11.29	7
78	0.208	50.000	2.2	4.01	11.25	7
79	0.191	50.000	1.8	3.69	11.21	8
80	0.174	50.000	1.5	3.36	11.17	8
81	0.156	50.000	1.2	3.01	11.14	8
82	0.139	50.000	1.0	2.68	11.11	8
83	0.122	50.000	0.7	2.35	11.08	9
84	0.104	50.000	0.5	2.01	11.06	9
85	0.087	50.000	0.4	1.68	11.04	9
86	0.070	50.000	0.2	1.35	11.03	10
87	0.052	50.000	0.1	1.00	11.02	10
88	0.035	50.000	0.1	0.68	11.01	10
89	0.017	50.000	0.0	0.33	11.00	11
90	0.001	50.000	0.0	0.00	11.00	11

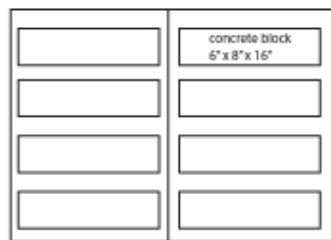
NOTES:

- HEIGHT HAS BEEN REDUCED BY 2 METERS TO ALLOW FOR HUMAN EXPOSURE
- DISTANCE FROM ANTENNA TO GROUND IS ACTUALLY TO A POINT 2 METERS ABOVE GROUND

Shively antenna 6812B

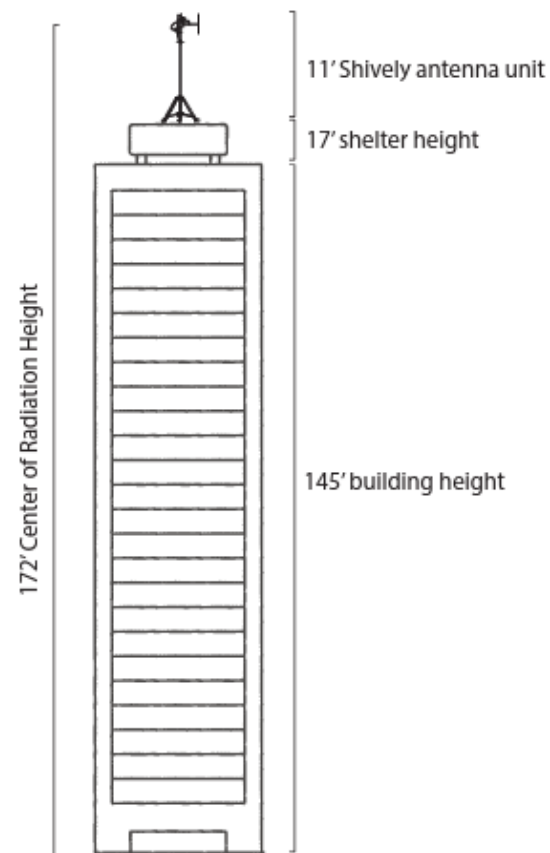
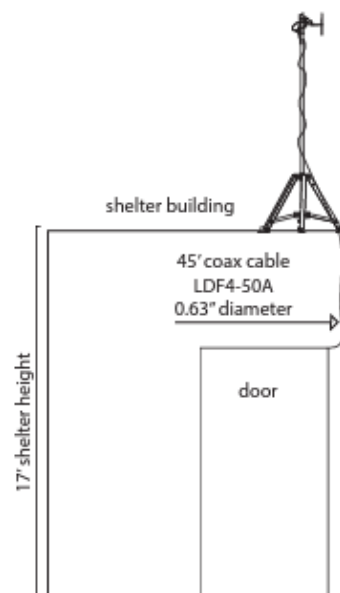


Tripod base reinforcement:
8 blocks @25lbs each



tripod base 35" x 28"

Proposed New Location of KCZP-LP



1551 Third Avenue, San Diego, CA 92101

Cathedral Plaza Apartments

NAD 83 Lat N32°43'18.32"

NAD 83 Long W117°9'42.52"