

**Section 74.1204 - Statement of Compliance**  
**W234BH, West Hazleton to Berwick, PA**  
**LMS File No. 0000153564**  
**FM Translator Facility ID. 141502**  
**November, 2022**

As demonstrated elsewhere in this Application, the Applicant proposes a minor change to the above-referenced, non-reserved band, pre-AM Revitalization, FM translator authorization. Specifically, the Applicant proposes herein to rotate the licensed directional antenna and slightly reduce power. In connection with the proposed technical facility change, the instant application also specifies an administrative change in the translator's "community of license" and changes the translator's primary station. No further changes are proposed herein. As discussed below, the instant proposal complies with the protection requirements set forth in Section 74.1204 of the FCC Rules.

Section 74.1204(a) Contour Overlap Protection Criteria

Attached is a map which demonstrates that proposed technical facility complies with the contour overlap provisions of Section 74.1204(a) of the FCC Rules with respect to all pertinent cochannel (See Exhibit 1) and first-adjacent channel (See Exhibit 2) assignments, authorizations and applications. The instant proposal is well clear of all other relevant co-channel and first-adjacent channel protection considerations not represented herein.

Section 74.1204(d) Second/Third-Adjacent Channel Protection

As shown in Exhibit 3, the proposed technical facility complies with the contour overlap provisions of Section 74.1204(a) of the FCC Rules with respect third-adjacent channel stations WBLJ-FM, Shamokin, PA (Channel 237A) and W237DP, Mountaintop, PA (Channel 237D). The required protection to third-adjacent channel station WQKX(FM), Sunbury, PA (Channel 231B) is discussed below. The instant proposal is well clear of all other relevant second and third-adjacent channel protection considerations not represented herein.

The proposed transmitting antenna will be located within the WQKX(FM) protected contour resulting in contour overlap as defined in Section 74.1204 of the FCC Rules. At the translator's proposed transmitter site, WQKX(FM) is predicted to produce a F(50,50) signal strength of 59 dBu. Therefore, in the vicinity of the second-adjacent channel translator station, the translator's relevant interfering contour is the 99 dBu contour relative to WQKX(FM). As shown on Exhibit 4, there are no buildings, residences or major roadways within the predicted worst-case interfering contour. Therefore, the instant proposal will cause no interference to any population served by WQKX(FM).

Accordingly, the proposed facility satisfies Section 74.1204(d) of the FCC Rules with respect to WQKX(FM) because it has been “demonstrated that no actual interference will occur due to lack of population or such other factors as may be applicable”.



Section 74.1204 CoChannel  
Contour Overlap Study

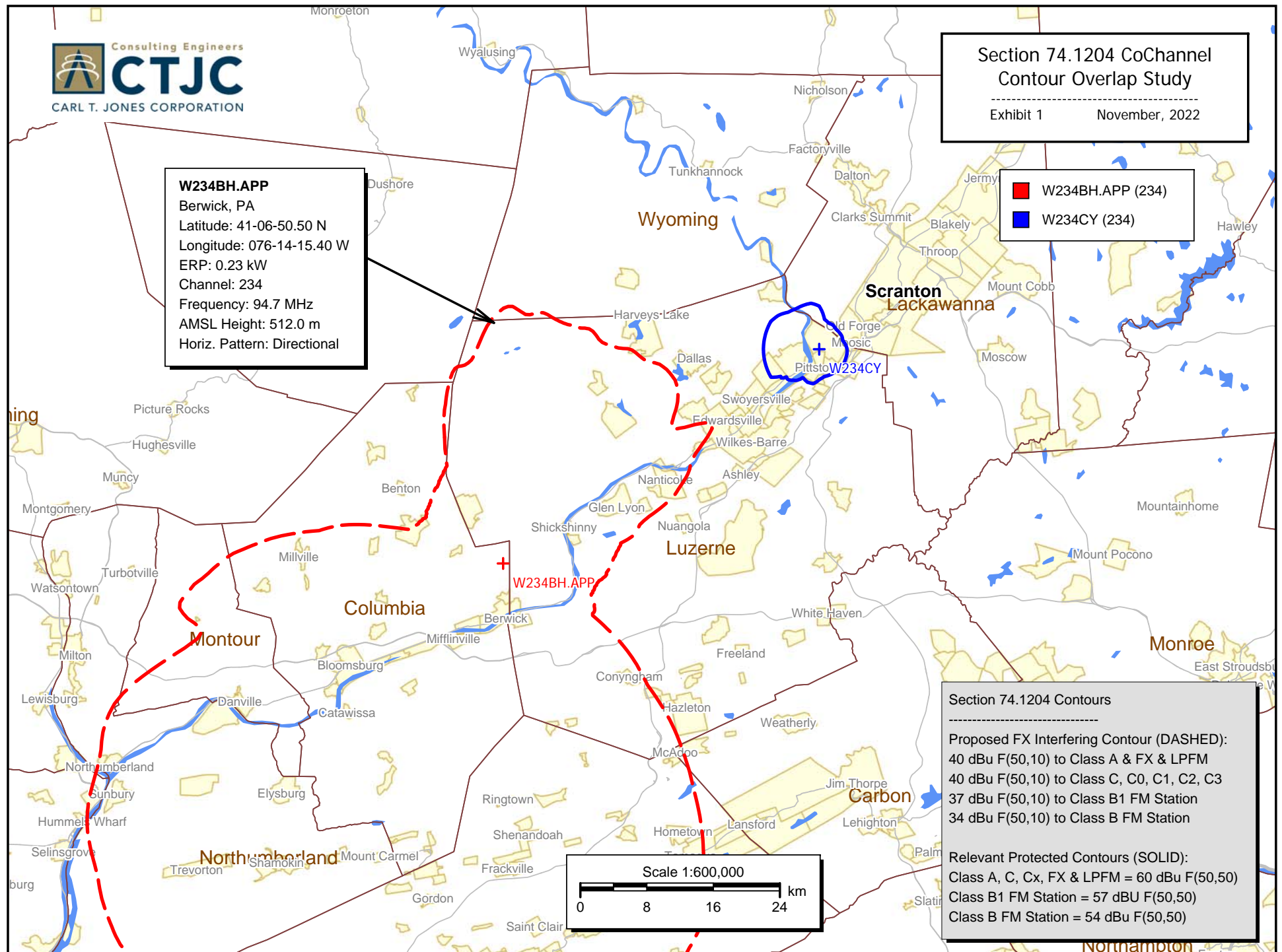
Exhibit 1

November, 2022

**W234BH.APP**

Berwick, PA  
Latitude: 41-06-50.50 N  
Longitude: 076-14-15.40 W  
ERP: 0.23 kW  
Channel: 234  
Frequency: 94.7 MHz  
AMSL Height: 512.0 m  
Horiz. Pattern: Directional

 W234BH.APP (234)  
 W234CY (234)



#### Section 74.1204 Contours

##### Proposed FX Interfering Contour (DASHED):

54 dBu F(50,10) to Class A & FX & LPFM  
54 dBu F(50,10) to Class C, C0, C1, C2 & C3  
51 dBu F(50,10) to Class B1 FM Station  
48 dBu F(50,10) to Class B FM Station

##### Relevant Protected Contours (SOLID):

Class A & FX & LPFM = 60 dBu F(50,50)  
Class C, C0, C1, C2 & C3 = 60 dBu F(50,50)  
Class B1 FM Station = 57 dBu F(50,50)  
Class B FM Station = 54 dBu F(50,50)

#### Section 74.1204 First-Adjacent Channel Contour Overlap Study

Exhibit 2

November, 2022

- W234BH.APP (234)
- WVHO-LP (233)
- W233BC (233)
- WRBT (235)
- W235AA (235)
- W235AD (235)

#### W234BH.APP

Berwick, PA

Latitude: 41-06-50.50 N

Longitude: 076-14-15.40 W

ERP: 0.23 kW

Channel: 234

Frequency: 94.7 MHz

AMS Height: 512.0 m

Horiz. Pattern: Directional

54 dBu F(50,10)

48 dBu F(50,10)  
to WRBT.235B

Scale 1:800,000





# Section 74.1204 2nd & 3rd Adjacent Channel Contour Overlap Study

Exhibit 3

November, 2022

- W234BH.APP (234)
- WBLJ-FM (237)
- W237DP (237)

## Section 74.1204 Contours

Proposed FX Interfering Contour (SMALL):  
100 dBu F(50,10) to Class A & FX & LPFM  
100 dBu F(50,10) to Class C, C0, C1, C2 & C3  
97 dBu F(50,10) to Class B1 FM Station  
94 dBu F(50,10) to Class B FM Station

Relevant Protected Contours (SOLID):  
Class A & FX & LPFM = 60 dBu F(50,50)  
Class C, C0, C1, C2 & C3 = 60 dBu F(50,50)  
Class B1 FM Station = 57 dBu F(50,50)  
Class B FM Station = 54 dBu F(50,50)

## W234BH.APP

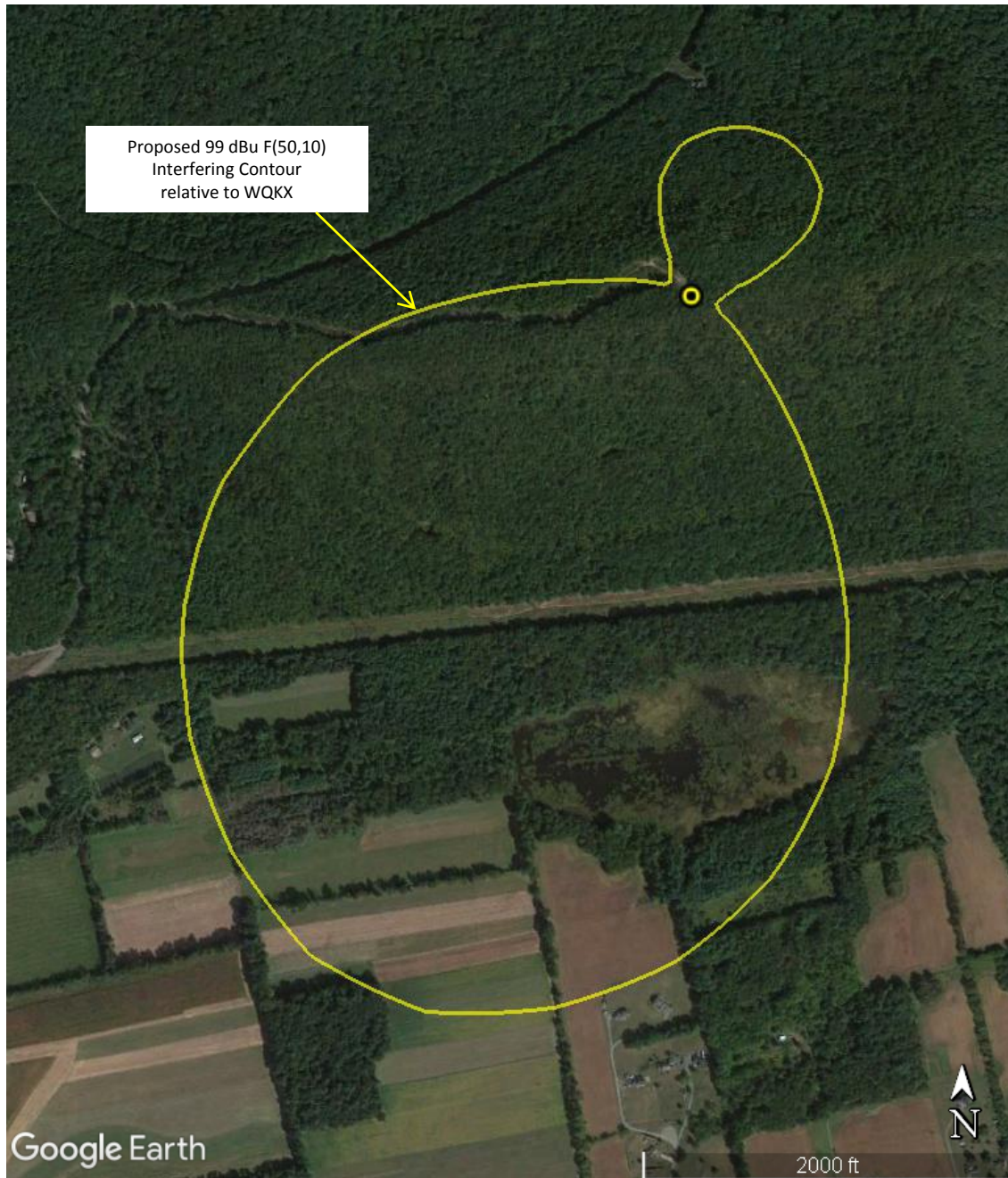
Berwick, PA  
Latitude: 41-06-50.50 N  
Longitude: 076-14-15.40 W  
ERP: 0.23 kW  
Channel: 234  
Frequency: 94.7 MHz  
AMSL Height: 512.0 m  
Horiz. Pattern: Directional

Consulting Engineers  
**CTJC**  
CARL T. JONES CORPORATION

Scale 1:600,000



WQKX(FM), Sunbury, PA  
Channel 231B, 16.0 kW ERP, 268 m HAAT  
FCC File No. BMLH-20050822AAE



Worst-Case Interfering Contour to WQKX  
W234BH.MOD, Berwick, PA (Facility ID 141502)  
Ch. 234D, 230 watts ERP (DA-MAX), 54 m RCAGL  
November, 2022