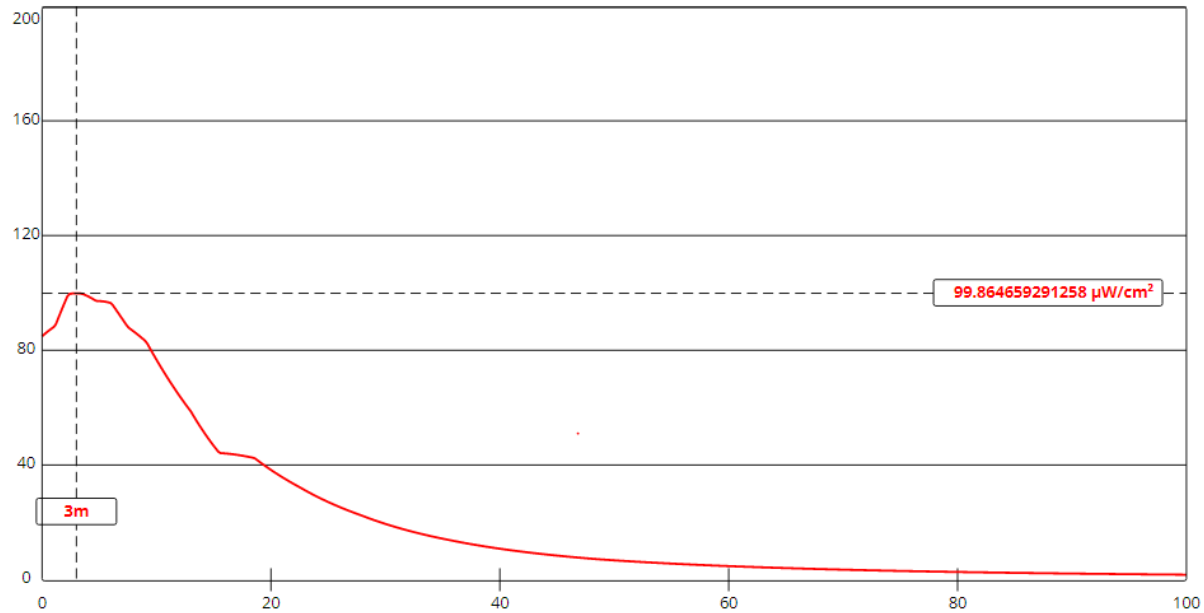


**Power Density VS Distance**  
**KENR-FM1, Missoula, MT FAC# 133545 & KQEZ-FM-1, Missoula, MT FAC# 202285**  
**September 14, 2022**

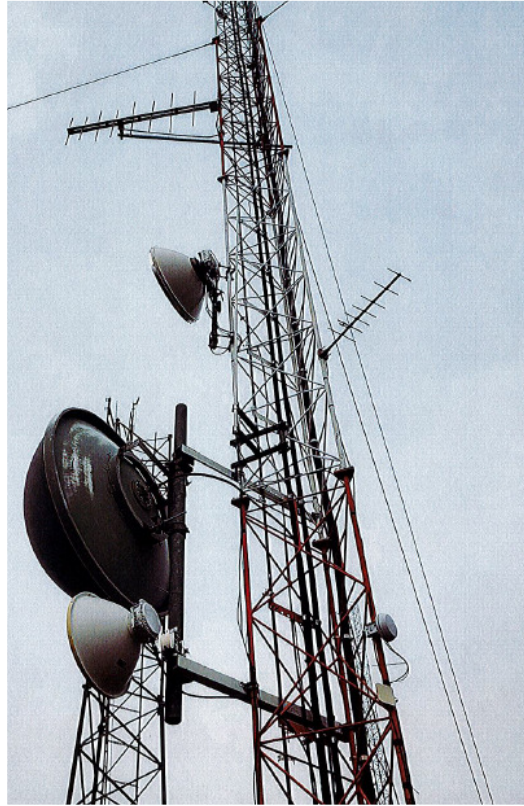


[View Tabular Results +](#)

Channel Selection	Channel 298 (107.5 MHz) ▼		
Antenna Type +	EPA Type 1: Ring-and-Stub or "Other" ▼		
Height (m)	15	Distance (m)	100
ERP-H (W)	0	ERP-V (W)	530
Num of Elements	1	λ	1

KENR-FM1 IS COMBINED ON THE SAME ANTENNA SYSTEM AS KQEZ-FM1. THE TRANSMIT ANTENNA IS SINGLE ELEMENT, DIRECTIONAL, VERTICALLY POLARIZED SCALA CL-FM, EPA TYPE 1 ANTENNA. EACH FACILITY IS BROADCASTING AT 265W FOR A COMBINED TOTAL OF 530W. FM MODEL PREDICTS A MAXIMUM POWER DENSITY OF 99.9 MICROWATTS PER SQUARE CENTIMETER AT A DISTANCE OF 3 METERS FROM THE TOWER. THIS REPRESENTS LESS THAN 50% OF THE 200 MICROWATTS PER SQUARE CM LIMIT FOR GENERAL POPULATION EXPOSURE; HENCE, THIS APPLICATION IS COMPLIANT WITH THE GUIDELINES FOR HUMAN EXPOSURE AS SPECIFIED IN OET BULLETIN NO. 65, EDITION 97-01, AUGUST 1997. PLEASE REFER TO THE ATTACHED POWER DENSITY VS DISTANCE GRAPH. FURTHERMORE, THE FACILITY IS ON THE REMOTE MOUNT DEAN STONE SITE THAT IS NOT ACCESSIBLE TO THE GENERAL PUBLIC. ACCESS TO THE FACILITY IS PROTECTED BY LOCKED GATES WITH WARNING SIGNS. ADEQUATE WARNING SIGNS ARE POSTED AT THE TRANSMIT SITE. PLEASE REFER TO PHOTOGRAPHS OF THE TOWER, TRANSMIT ANTENNA, WARNING SIGNS, LOCKED ACCESS GATES AND THE REMOTE NATURE OF THE SITE.

**KENR-FM1, Missoula, MT FAC# 133545**  
**Photographs Tower, Antenna, Gates & Warning Signs**  
**9/14/2022**



**Tower & CL-FM Antenna**



**Locked Gate on Tower Access Road**





**Locked Gate on Tower Access Road**



**Warning Signs on Locked Gate on Tower Access Road**





**Warning Signs on Tower and Communications Building**