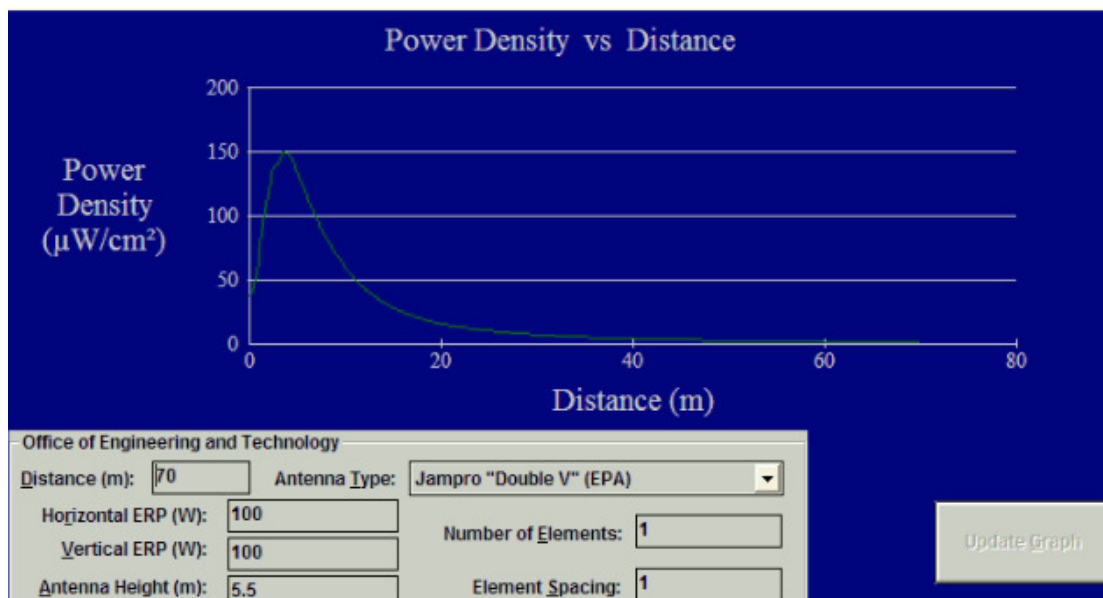
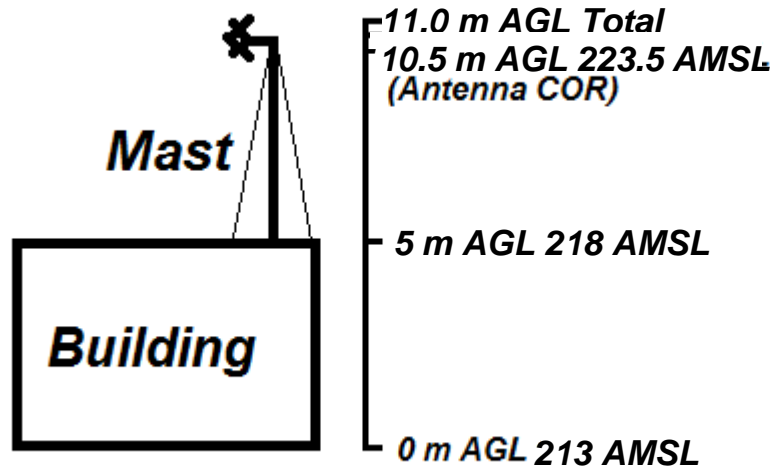


AMENDMENT: (1) Diagram attachment (below) was added to this application per staff request. (2) Total structure height was decreased by 0.5 meters, from 12.5 to 12 m, COR changed to 11.5 m AGL.



The applicant proposes mounting a new antenna on a commercial building roof at 6 m above the roof to the unit. A one-bay flying-V type antenna is proposed. FM Model predicted a maximum RF exposure of 150 $\mu\text{W}/\text{cm}^2$, at 3.64 meters from the antenna base. This represents 75% of the Maximum Permissible Exposure (MPE) of 200 $\mu\text{W}/\text{cm}^2$ for uncontrolled environments at the ceiling level. The radiation level in the structure, thus, meets the requirements for uncontrolled environments.