

W237FK, Tuskegee, AL
(Channel 225)
FM Overlap Study

REFERENCE CH# 225D - 92.9 MHz, Pwr= 0.25 kW DA, HAAT= 159.8 M, COR= 249.6 M DISPLAY DATES
 32 26 29.9 N. Average Protected F(50-50)= 16.5 km DATA 09-15-22
 85 45 02.7 W. Standard Directional SEARCH 09-19-22

CH CITY	CALL	TYPE	ANT STATE	AZI. <--	DIST FILE #	LAT. LNG.	Pwr (kW) HAAT (M)	INT (km) COR (M)	PRO (km) LICENSEE	*IN* (Overlap in km)	*OUT*
------------	------	------	--------------	-------------	----------------	--------------	----------------------	---------------------	----------------------	-------------------------	-------

222C0	WLWI-FM	LIC	CN	264.4	42.12	32 24 13.5	100.000	10.9	76.2	14.9	-35.1*
Montgomery			AL	84.1	BMLH20070402ADQ	86 11 46.9	334	397	Cumulus Licensing LLC		

Of concern:

Attached exhibit shows no interference will reach any publicly available infrastructure

224C2	WKZJ	LIC	CN	118.0	72.67	32 07 58.6	39.000	79.0	53.5	-18.7*	0.8
Eufaula			AL	298.4	BLH20001103AAC	85 04 12.8	168	252	Davis Broadcasting, Inc. O		

Of concern:

No prohibitive interference will be offered to WKZJ.

226A	WACV	LIC	ZCN	273.9	61.90	32 28 41.5	3.100	46.8	31.1	-1.3	6.3
Coosada			AL	93.6	BLH20120815ABC	86 24 27.9	141	220	Liberty Acquistions 825, LLC		

Of concern:

No prohibitive interference will be offered to WACV.

224D	W224CR	LIC	CN	266.6	50.83	32 24 49.0	0.074	13.6	9.7	21.0	16.8
Montgomery			AL	86.3	BLFT20161130AEX	86 17 25.0		153	American Family Association		

Of concern:

No prohibitive interference will be offered to W224CR.

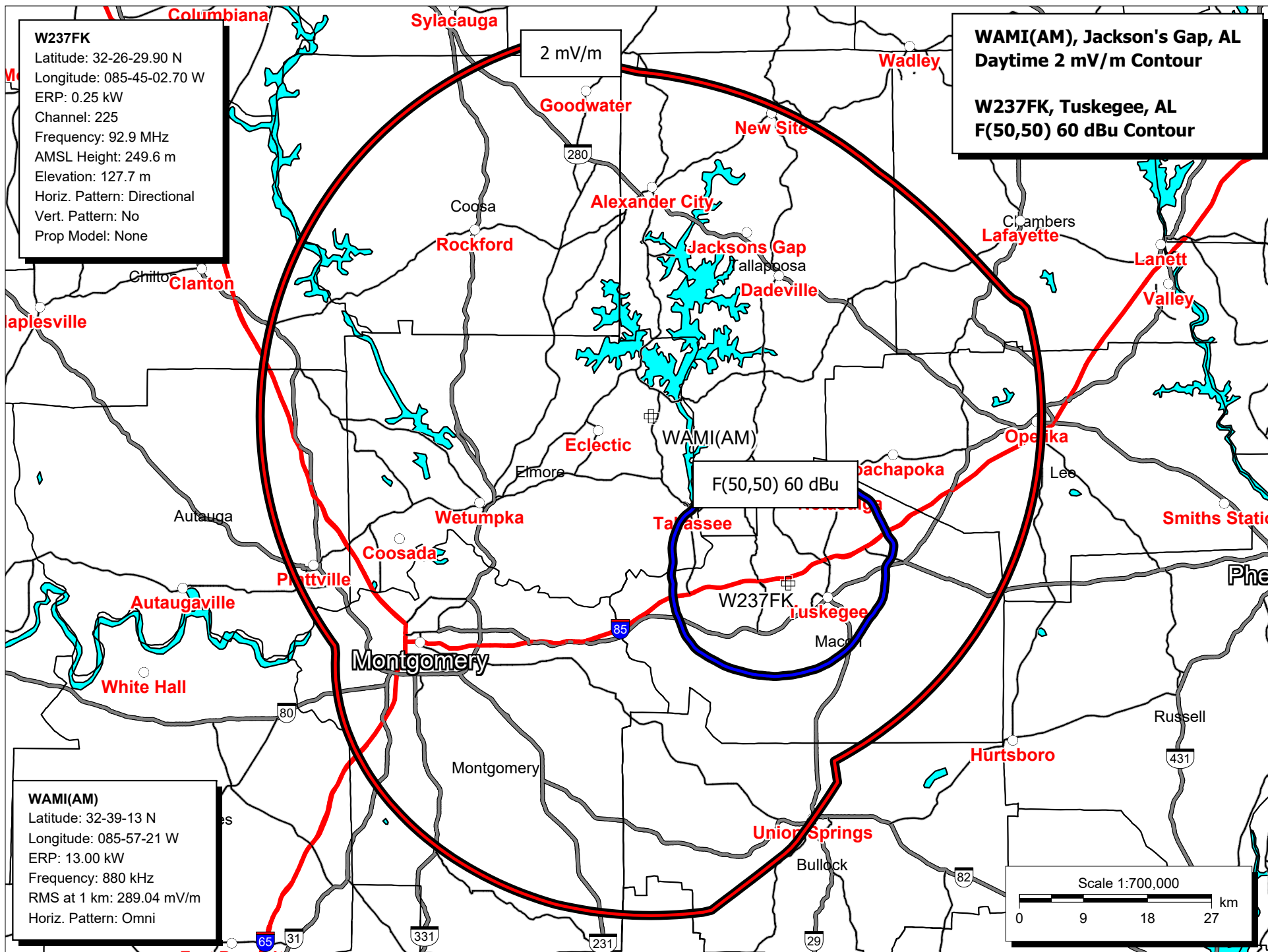
Terrain database is NGDC 30 SEC, R= 73.215 qualifying spacings or FCC minimum spacings in KM, M= Margin in KM
 Contour distances are on direct line to and from reference station. Reference Zone= , Co to 3rd adjacent.

All separation margins (if shown) include rounding.

Ant Column: (D= DA Standard, Z= DA 73.215, N= Not DA 73.215, _= Omni), Polarization (C,H,V,E), Beamtilt(Y,N,X)

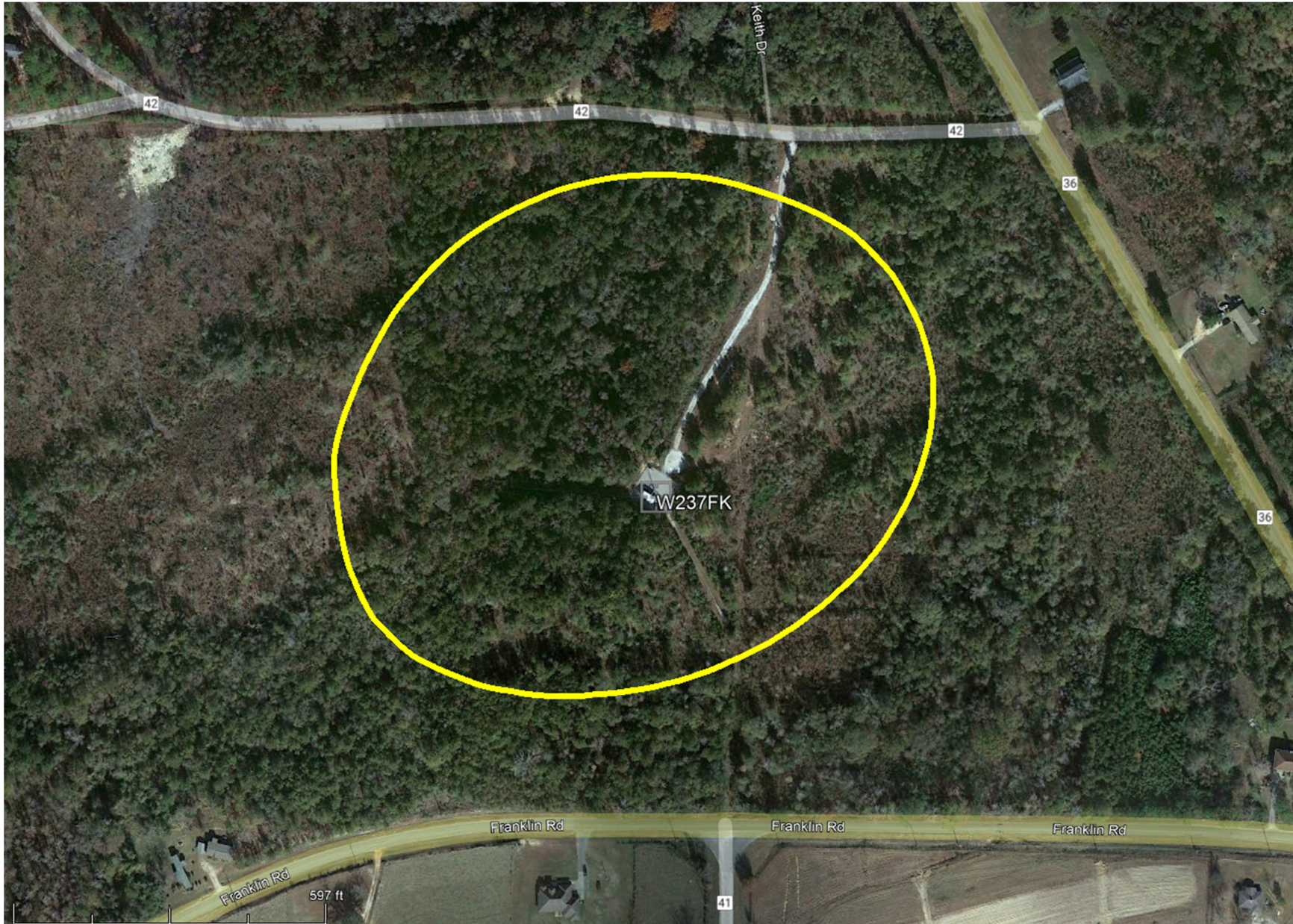
"*"affixed to 'IN' or 'OUT' values = site inside restricted contour.

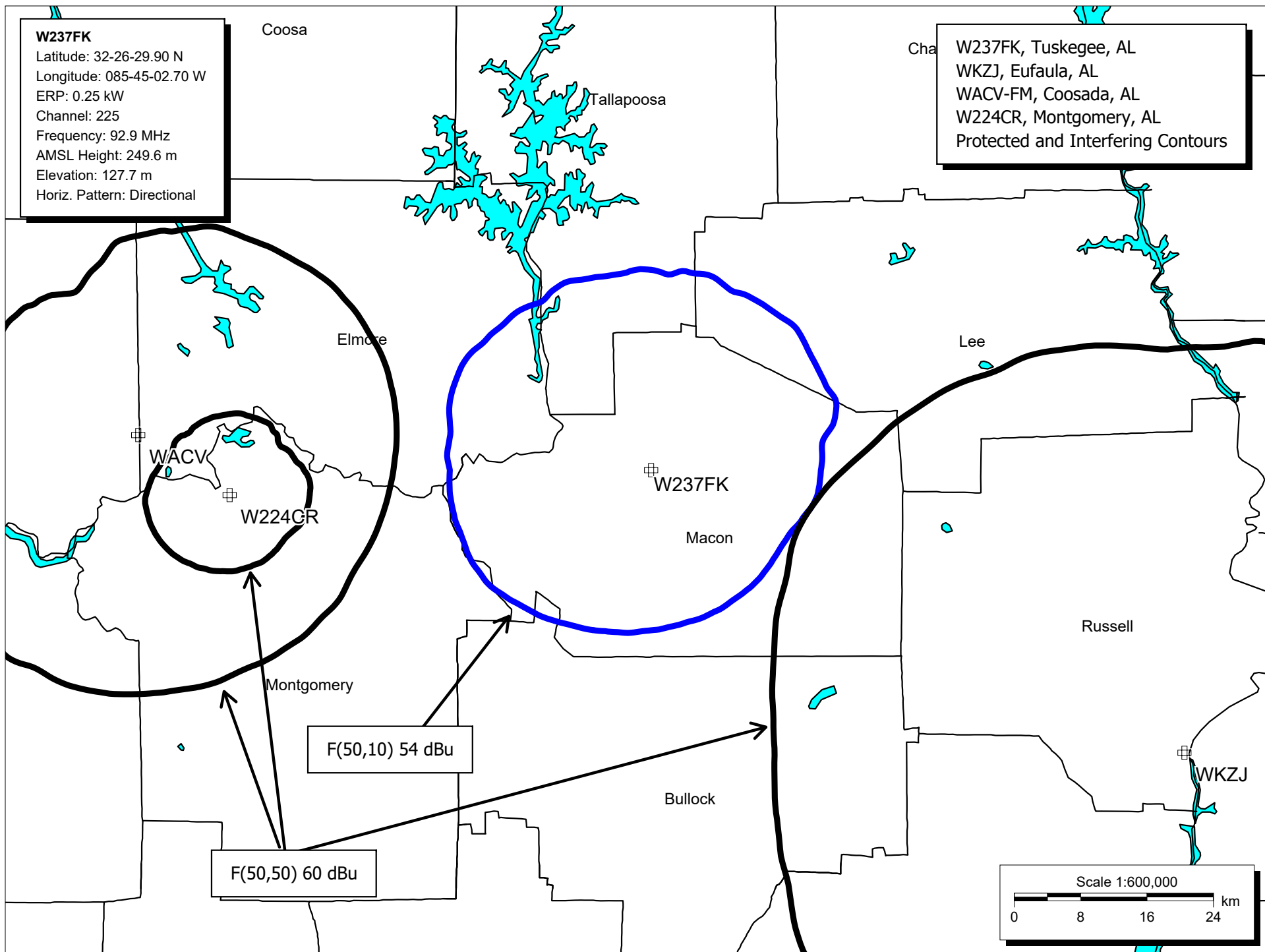
« = Station meets FCC minimum distance spacing for its class.



W237FK, Tuskegee, AL
(Channel 225)
Proposed Interfering Contour to WLWI-FM
F(50,10) 115.5 dBu

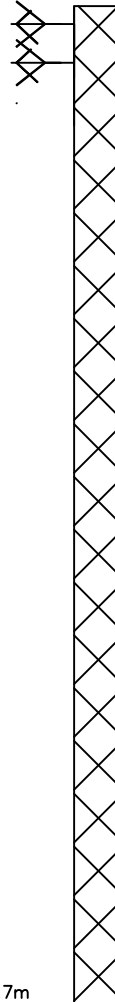
(showing the interfering contour does not overlap any population or public infrastructure)





TOWER MSL: 252.6m TOWER AGL: 124.9m

CL MSL: 249.6m CL AGL: 121.9m



SITE MSL: 127.7m

W237FK VERTICAL SKETCH

SCALE: N.T.S.

PRELIMINARY
NOT FOR
CONSTRUCTION

DATE _____

W237FK VERTICAL SKETCH
TUSKEGEE, ALABAMA