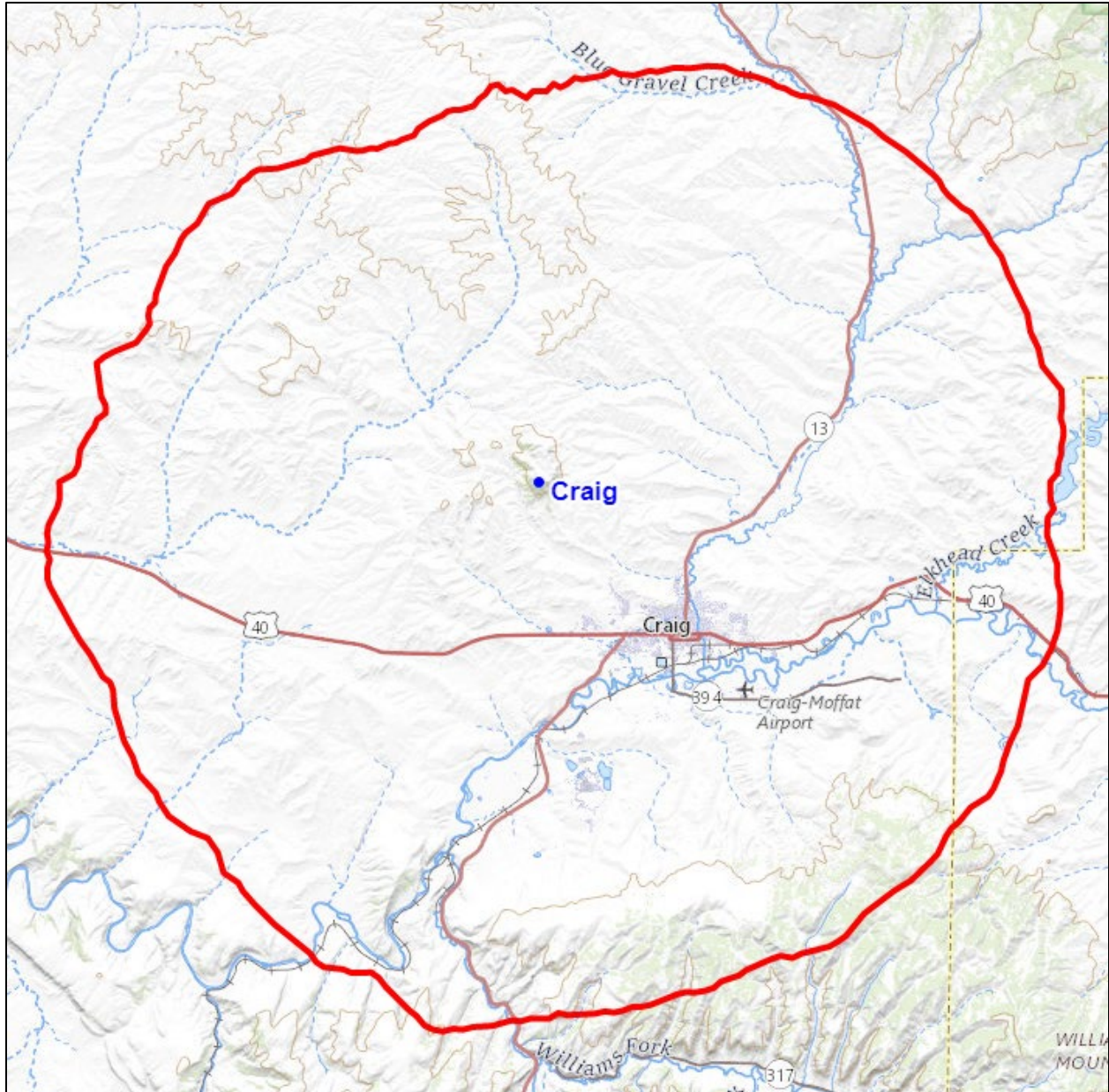




REC Networks/Michelle Bradley, CBT
11541 Riverton Wharf Rd.
Mardela Springs, MD 21837
844.REC.LPFM/202.621.2355
recnet.com

Modification of authorized facility for KRYJ
CRAIG, CO
SAN TAN EDUCATIONAL MEDIA
0000166301

PROPOSED 60dBu F(50,50) SERVICE CONTOUR

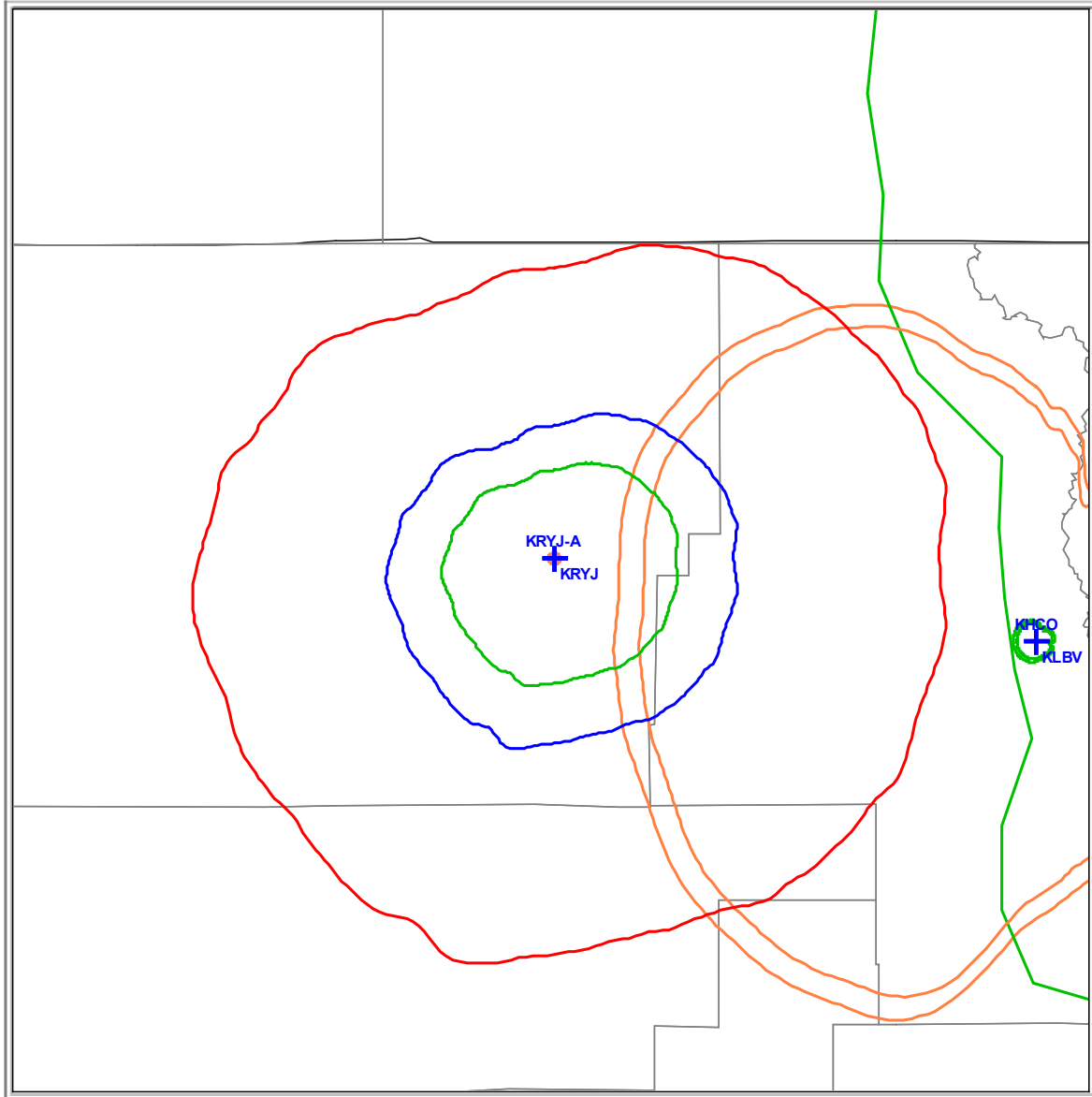


CRAIG, CO – Channel 209A (89.7 MHz) ~ ERP 0.1 kW
Elev: 2281 m ~ RCAGL: 10.3 m ~ RCAMSL: 2291.3 m ~ HAAT: 273.42 m (NED1)
Overall tower height: 30.5 m ~ ASR: None
NAD83 Latitude: 40° 33' 55.0" NL ~ Longitude: 107° 36' 42.0" WL

ComStudy 2.2 search of channel 209 (89.7 MHz Class A) at 40-33-55.1 N, 107-36-39.8 W.

CALL	CITY	ST	CHN	CL	DIST	SEP	BRNG	CLEARANCE
KRYJ	Craig	CO	209	A	0.00	115.00	90.0	-21.72 dB
* Currently authorized facility.								
KLBV	STEAMBOAT SPRINGS	CO	207	C2	73.94	55.00	99.6	3.73 dB
KHCO	HAYDEN	CO	211	C2	73.94	55.00	99.6	5.38 dB
KXGR	LOVELAND	CO	209	C0	193.38	215.00	87.5	8.19 dB
KUWI	RAWLINS	WY	210	C2	127.87	106.00	14.1	13.07 dB
KPRN	GRAND JUNCTION	CO	208	C1	192.71	133.00	210.5	14.31 dB
KUWI	RAWLINS	WY	210	C3	127.69	89.00	14.1	19.29 dB
762750	JEFFREY CITY	WY	208	C1	194.05	133.00	0.9	20.68 dB
KPRE	VAIL	CO	210	A	144.68	72.00	136.5	31.71 dB
KTMH	MONTROSE	CO	210	C1	241.85	133.00	181.3	33.84 dB
766804	ALMA	CO	208	C3	187.04	89.00	138.8	34.62 dB
KTME	RELIANCE	WY	208	A	178.75	72.00	306.0	36.87 dB
KEPC	COLORADO SPRINGS	CO	209	C3	314.56	142.00	128.8	39.44 dB
KUOU	ROOSEVELT	UT	207	C2	176.90	55.00	269.7	39.46 dB

Contour Protection - §73.509



Map Scale: 1:853365 1 cm = 8.53 km V/H Size: 166.57 x 161.74 km

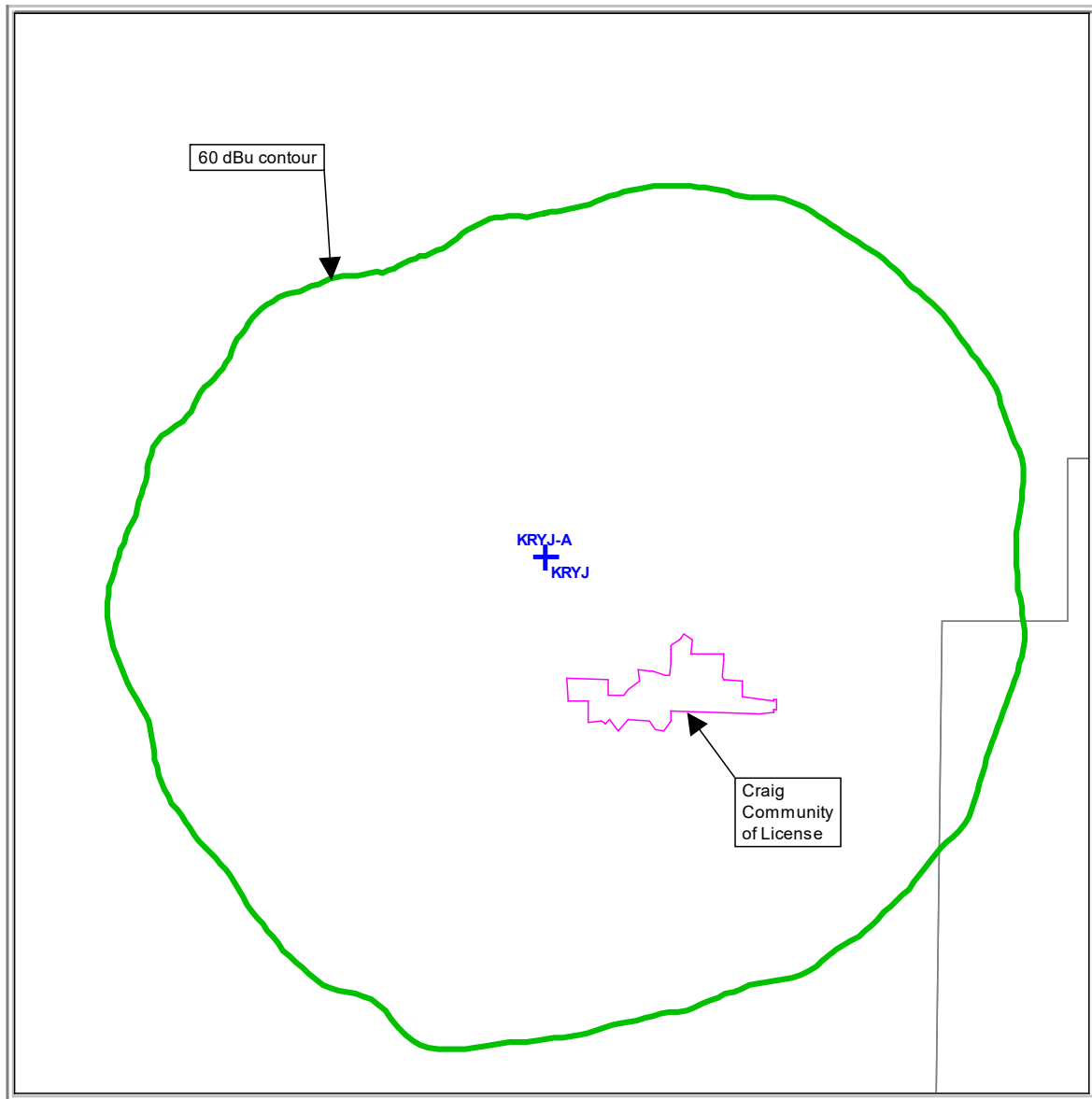
GREEN: Incumbent interfering contour into Proposed 60 dBu service contour.

RED: Proposed 40 dBu interfering contour into Incumbent 60 dBu service contour (co-channel)

BLUE: Proposed 54 dBu interfering contour into Incumbent 60 dBu service contour (first-adjacent)

ORANGE: Proposed 100 dBu interfering contour into Incumbent 60 dBu service contour (second/third-adjacent)

Community Coverage - §73.515



Map Scale: 1:219080 1 cm = 2.19 km V/H Size: 42.76 x 41.52 km

Proposed facility places a 60 dBu contour over 100 percent of the community of license.

SITE ASSURANCE CONTACT INFORMATION

San Tan Educational Media
KRYJ – Craig, Colorado
Channel 209A – 89.7 MHz

Vic Michaels
Site Owner
307 772-1322

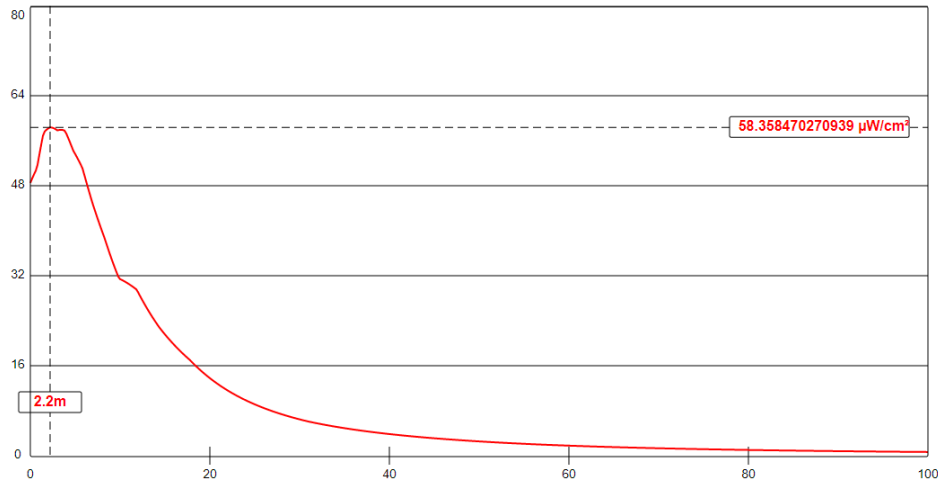
NCE FILING WINDOW INFORMATION

San Tan Educational Media
KRYJ – Craig, Colorado
Channel 209A – 89.7 MHz

The original construction permit application 0000166301 was declared singleton and was granted on December 20, 2021. This facility was not subject to either a Threshold Fair Distribution analysis nor was subject to a comparative review.

NEPA COMPLIANCE

San Tan Educational Media
KRYJ – Craig, Colorado
Channel 209A – 89.7 MHz



The instant application is proposed an effective radiated power of 0.1 kW vertical and 0.1 kW horizontal. Using the Commission's FM MODEL software and utilizing a single-bay EPA Type 1 antenna at a height of 10.2 meters, it has been determined that the power density would be no greater than $58.358 \mu\text{W}/\text{cm}^2$ at any point, which would not exceed the general population/controlled exposure guideline of $200 \mu\text{W}/\text{cm}^2$ at any location.

Non-exempt facilities on this tower:

Call	kW	Height	Type	$\mu\text{W}/\text{cm}^2$
KHAL	1.6 H/V	18	EPA-2 – 4 Bay 0.5	11.377
KRYJ-Prop	0.1 H/V	10.3	EPA-1 – 1 Bay	58.358
Total				69.735

As the combined power density does not exceed $200 \mu\text{W}/\text{cm}^2$ at any location, the proposed operation does not exceed the general population/controlled exposure guidelines.

In the instant application, the applicant is certifying that the RF exposure in all occupied areas is well within the guidelines of in accordance with OET Bulletin No. 65, Edition 97-01, August 1997.

Report prepared by:

Michelle Bradley, CBT
REC Networks

August 5, 2022