

**Technical Statement**  
**W252DY Facility ID 201477 Sussex, NJ**  
**July, 2022**

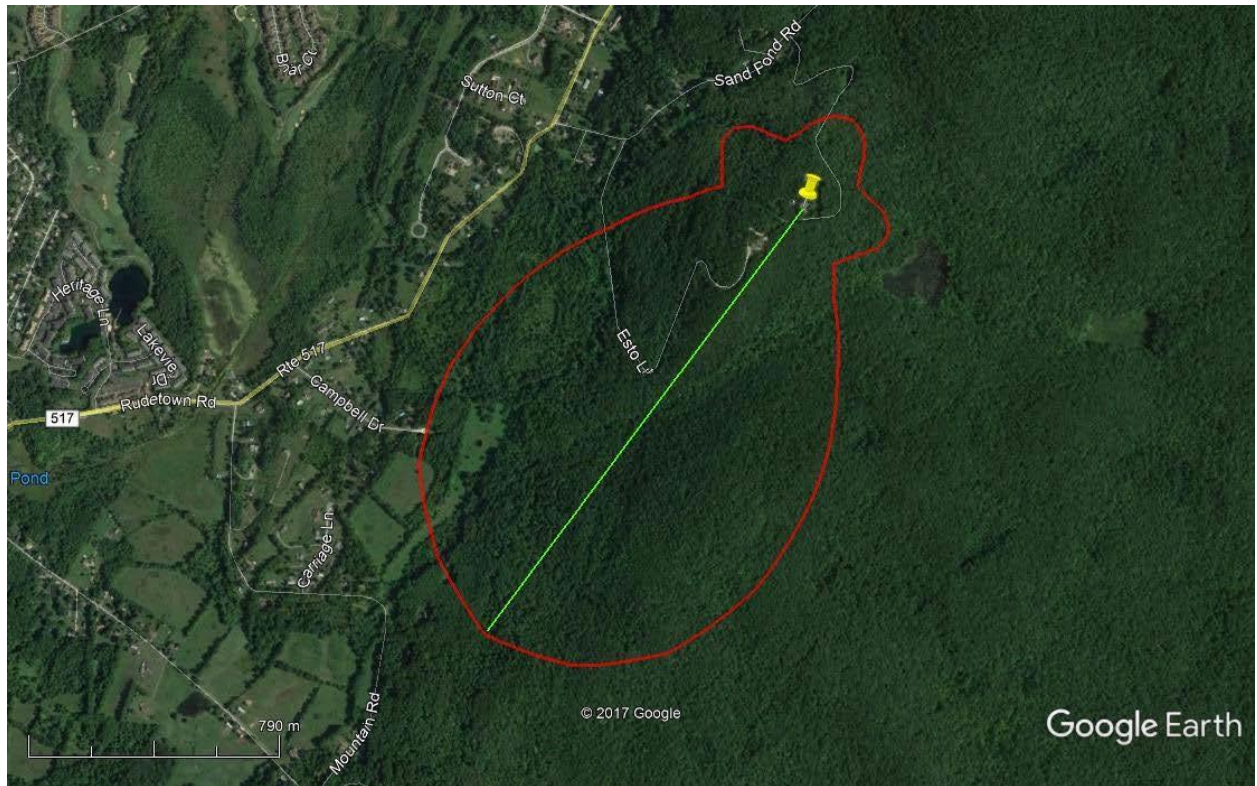
The proposed facility will be classified as a fill-in translator for WYNY(AM) at Milford, PA. The proposal is properly spaced to all other facilities with the exception of 2<sup>nd</sup> adjacent WEPN-FM, New York, NY on channel 254 (98.7 mHz) and WSKQ-FM, New York, NY on channel 250 (97.9 mHz).

The proposed facility will operate at 150 watts with a directional antenna at an existing tower site with ASR # 1042247. The 60 dBu contour of the proposed translator facility is fully contained within the 25 mile radius of WYNY(AM).

**Waiver Request – WEPN-FM & WSKQ-FM**

Both WEPN-FM and WSKQ-FM operate with the same power from the same antenna on the Empire State Building in New York City. As such, this request for waiver applies to both stations as the contours are identical. WEPN-FM and WSKQ-FM operate on second adjacent channels to the proposed translator facility. It is determined that WEPN-FM and WSKQ-FM have a signal strength of 54.6 dBu at the proposed translator site. Using the established Undesired to Desired Method, for actual interference to occur the interfering signal must be 40 db greater than the protected signal. By taking into account the 54.6 dBu signal from WEPN-FM and WSKQ-FM and adding 40 dBu to it, the interfering contour then becomes 94.6 dBu. The antenna is proposed to be mounted at 8 meters above ground level on an existing structure.

As shown below, the interfering contour of 94.6 dBu does not cross any residences or highways.



It is therefore the conclusion of the applicant that this Waiver Request towards WEPNFM and WSKQ-FM is within the spirit of the FCC rules.