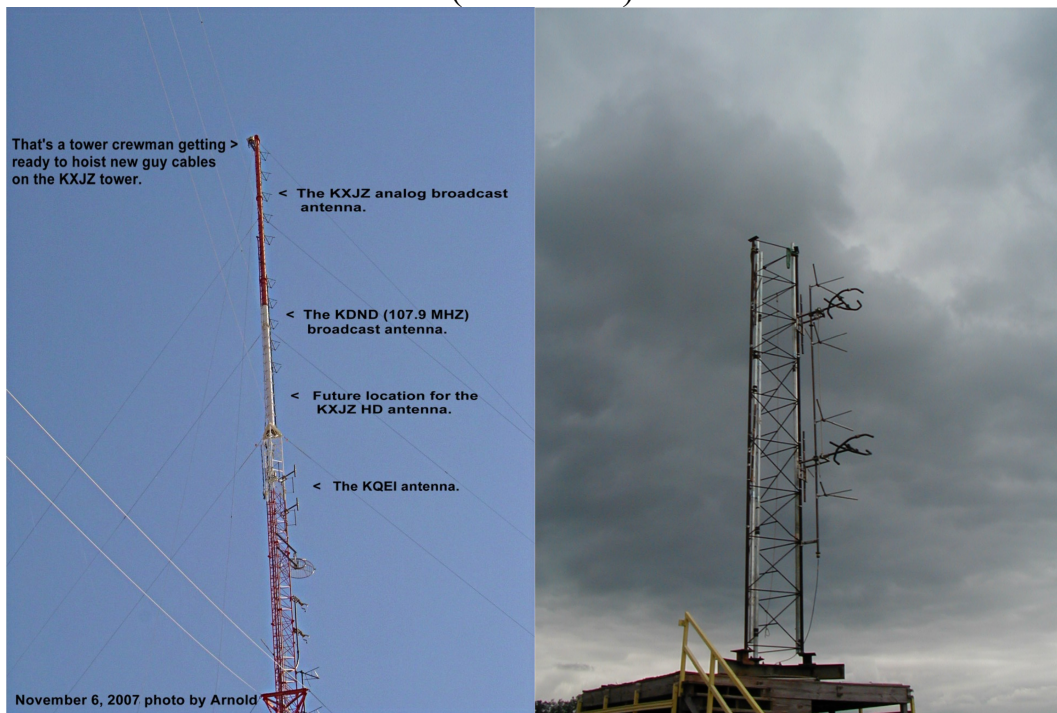


Statement for KSTE-FM License to Cover Application

April 22, 2022

The KQEI-FM antenna was tested on a full-scale model of the portion of the structure used to support the actual array. The proof-of-performance was accomplished using a supporting structure of identical dimension and configuration as the as the actual triangular tower, including all braces, ladders, conduits, coaxial lines and other appurtenances that are included in the actual aperture at which the antenna will be installed.

The added transmission lines and a (1") lighting conduit were part of the KQEI-FM directional antenna range test. Due to the fact that the KDND (KSTE-FM) antenna transmission line was included in the KQEI-FM directional antenna test, the location for the transmission line for KDND (KSTE-FM) will have no adverse effect



KQEI-FM, North Highlands, California (Facility ID No. 20791)

Dan Dowdle

KQEI-FM, North Highlands, California Range Test

Daniel Dowdle
ERI Test Range Director