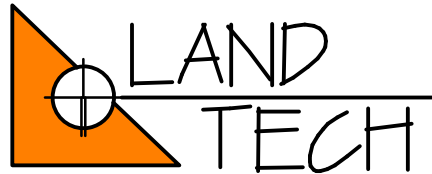


PREPARED BY :



LAND TECHNICAL SERVICE CORPORATION
127 NH ROUTE 28 - UNIT 4
OSSISPEE, NEW HAMPSHIRE 03864 - 0060

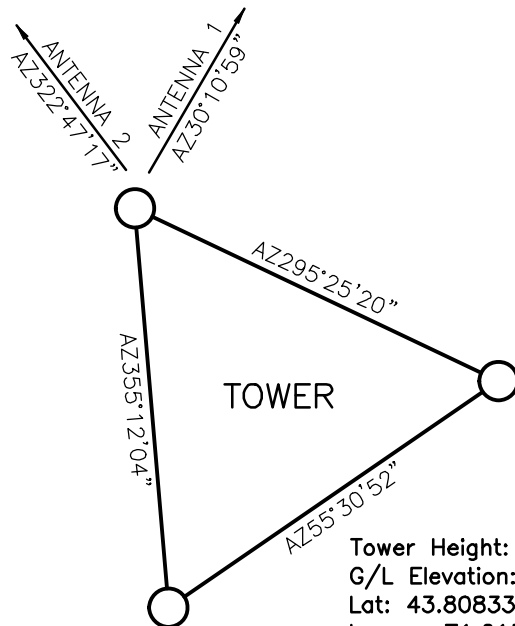
Date: 25/4/2022

To: New Hampshire Gospel Radio

Re: 2 Shively Labs 6025 Antennas for WVN

Site Location: Whittier Communications W. Ossipee, NH

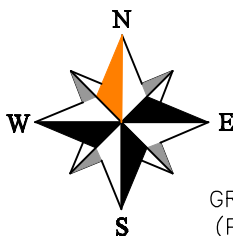
On April 20, 2022 two log periodic antennas (antenna 1, antenna 2) were observed to have a true north of 30° (antenna 1) and 323° (antenna 2) with an accuracy of plus or minus one (1) degree. The antennas were located by means of triangulation taken from a baseline that was established through GPS/RTK observations referenced to published NGS control data.



Bryan D. Berlind
N.H. Licensed Land Surveyor
NHLS #701



Tower Height: 180ft / 55m
G/L Elevation: 1670ft / 509m
Lat: 43.808333 [43-48-30]
Long: -71.215 [71-12-54]
Coverage: Route 16 & 25 , Ossipee, White & Silver Lakes
Construction: Lattice



GRID NORTH

GRID AZ + 17°35'15" = MAG AZ
(PER NGS OBS 20 APRIL 2022)