

ENGINEERING STATEMENT
RADIO MULTIPLE OWNERSHIP ANALYSIS

This radio multiple ownership analysis was prepared on behalf of Lakes Media, LLC concerning the CP modification application for authorized FM station WCGY-FM on channel 247A at Jefferson, New Hampshire (FCC File No. 0000158213). As Jefferson is not located in an Arbitron rated market, this analysis was prepared under the FCC "Interim" contour analysis method.¹ In addition to WCGY-FM, Lakes Media, LLC also currently owns FM stations WLKZ (Ch. 285A, Wolfeboro, NH, Facility ID 65624) and WWLK-FM (Ch. 268A, Meredith, NH, Facility ID 73216). Figure 1 is a map of the principal community contours (70 dBu) for the proposed WCGY-FM channel 247A operation at Jefferson and for the licensed operations of WLKZ and WWLK-FM. As the 70 dBu contour for the proposed WCGY-FM channel 247A operation at Jefferson does not overlap the 70 dBu contours of either WLKZ or WWLK-FM, no further analysis is necessary.



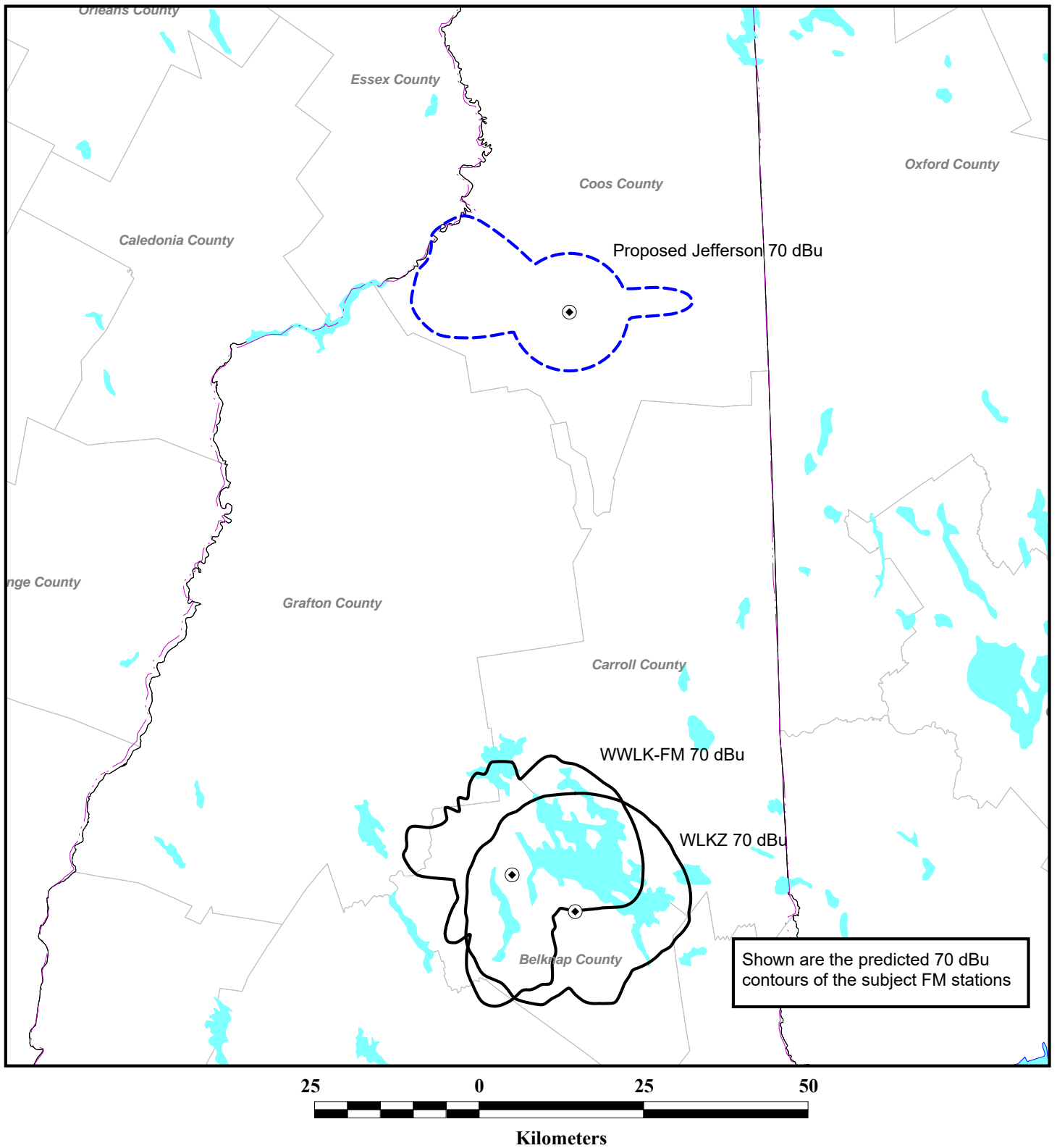
W. Jeffrey Reynolds

du Treil, Lundin & Rackley, Inc.
5212 Station Way
Sarasota, Florida 34233
(941)329-6013

April 25, 2022

¹ See Report and Order and Notice of Proposed Rulemaking, MB Docket 02-277, FCC 03-127, Released July 2, 2003.

Figure 1



PRINCIPAL COMMUNITY CONTOURS OF SUBJECT STATIONS

du Treil, Lundin & Rackley, Inc. Sarasota, Florida