

# Consolidated Engineering Statement

Minor Modification of Licensed Facility

WCDG 204A

GA Dahlonaga

FacId 172359

Legacy Broadcasting

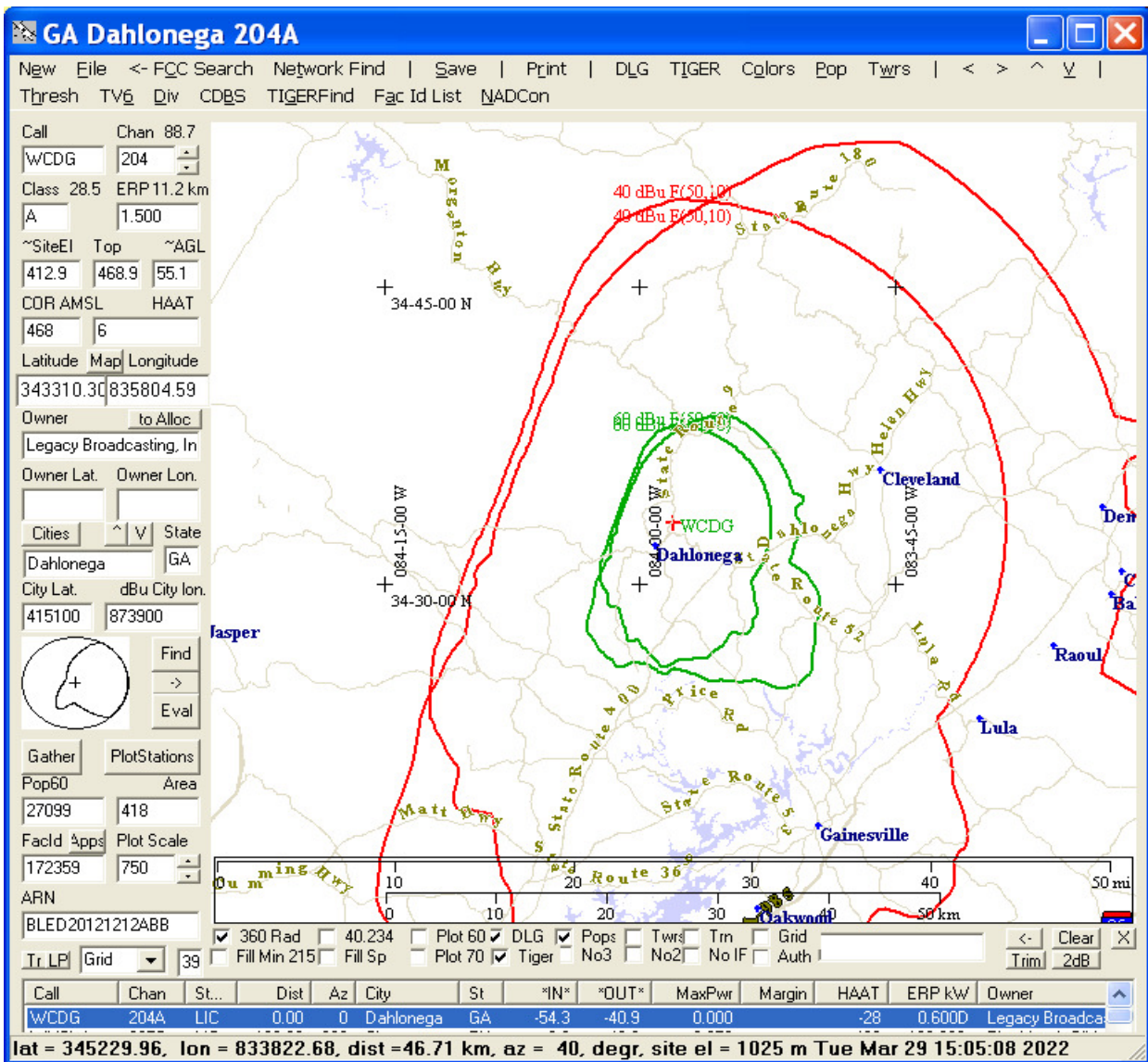
Robert Moore  
3/29/2022

Abstract.....	1
Minor Change Showing.....	2
City Coverage showing.....	3
Identification of the tower and FAA showing.....	4
Pattern Showing.....	8
FM Interference.....	9
Channel 6 Television.....	9
Prop vs WMEW.....	11
Prop vs WRAS.....	17
Prop vs WPPR.....	21
Prop vs WBCX.....	22
Radiation Hazard.....	23
Protected zones report .....	24

## Abstract

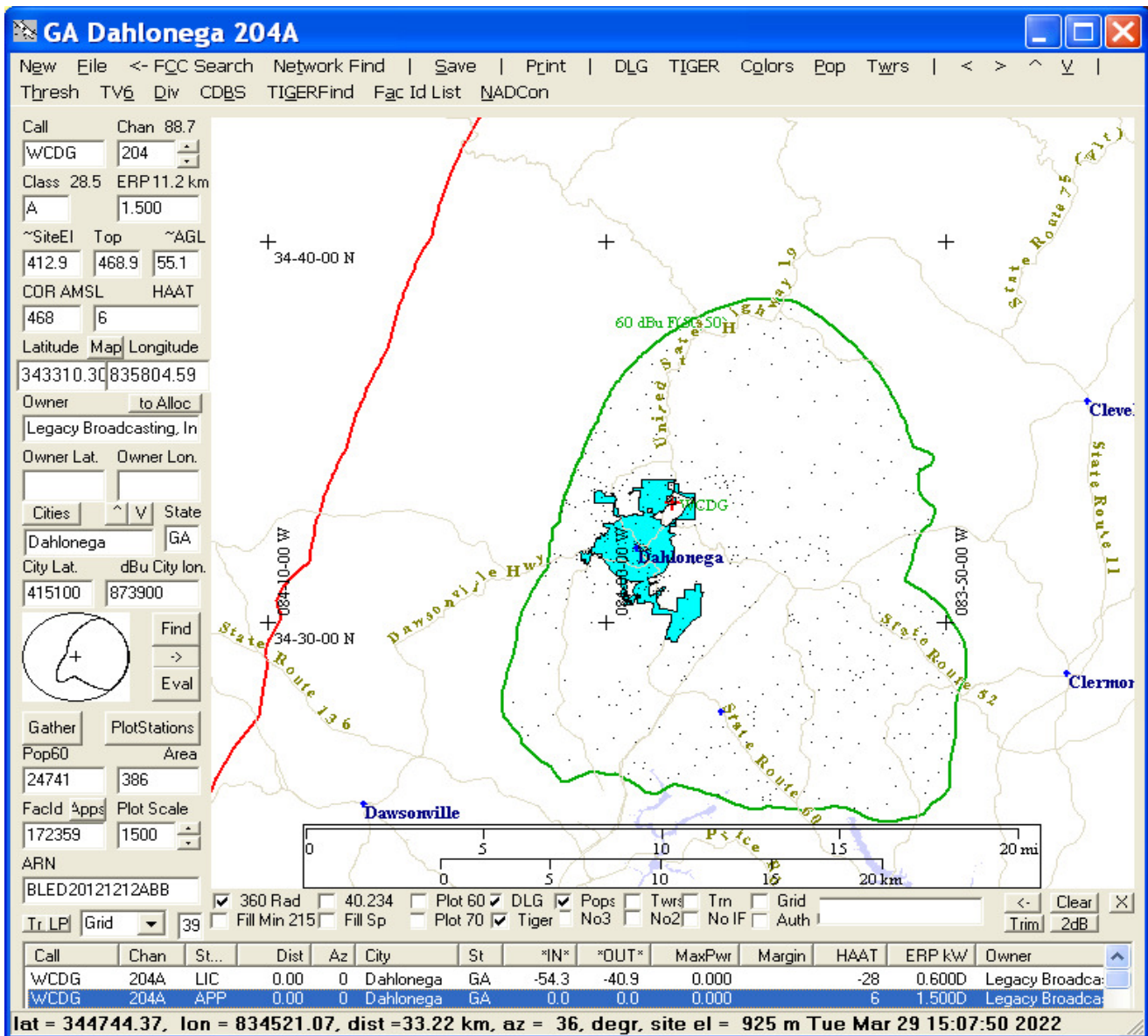
This amendment proposes modifying a Class A NCE from 0.6 kW at -28 meters HAAT to 1.5 kW at 6 meters HAAT. The site, city of license and channel are unchanged (making this a minor change), but the tower is extended from 21 meters AGL to 57 meters (187 ft) AGL). The site is already in use as for the present tower. A TowAir is attached to show this is not a significant height tower and does not require FAA or ASR processing.

## Minor Change Showing

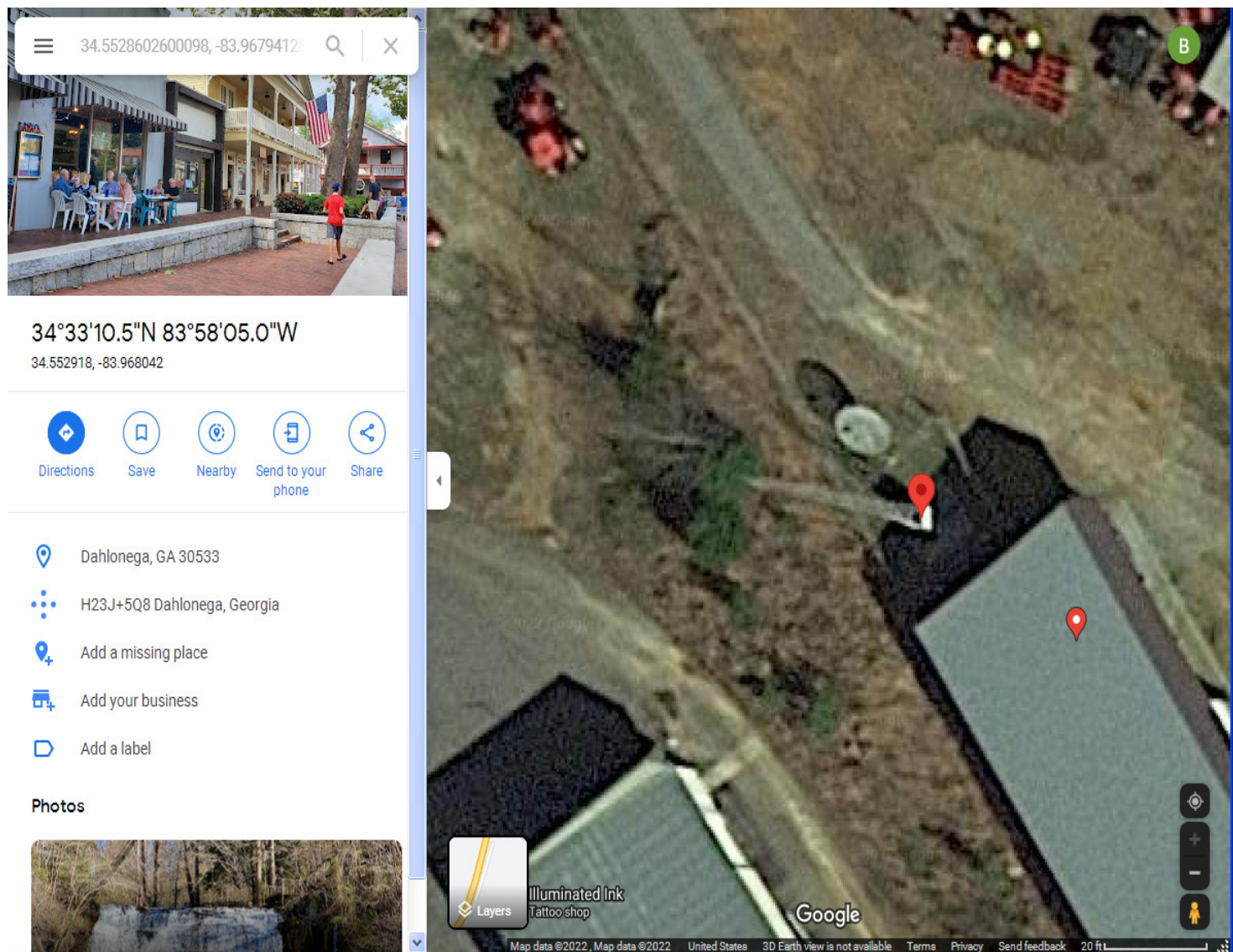


## City Coverage showing

This map shows that the city of license is fully surrounded by the 60 dBu contour of the proposed facility, as required.



## Identification of the tower and FAA showing





```
#####  
GABRIEL 4.0  
#####
```

- ```
-----  
- Purpose: Retrieves elevation at a given set of coordinates  
- Input: Latitude and Longitude (NAD 83)  
- Datasource: USGS NED 1/3 arc-second layer  
- Host: https://ned.usgs.gov/epqs/  
-----
```

```
Coordinates received: 34.552917, -83.967941  
                     34 33 10.5          83 58  4.6
```

```
Elevation in feet:  1356.4  
Elevation in meters: 413.4
```

```
Saved to c:\Seraph\Gabriel\output.txt
```

```
< Press Enter to continue > _
```

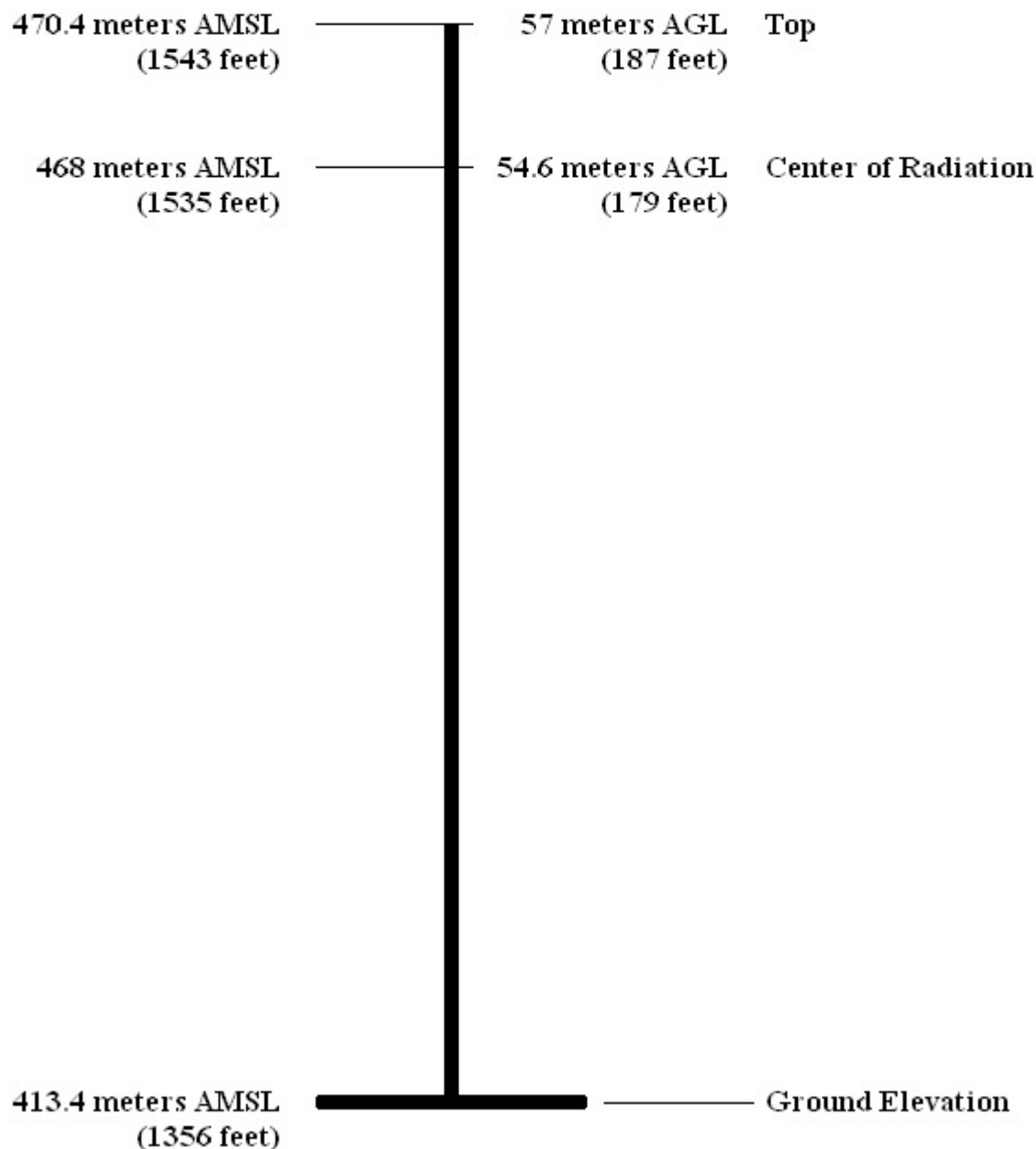


# Exhibit 1

## Vertical Plan

GA Dhlonega

Not To Scale





## Antenna Structure Registration

[FCC](#) > [WTB](#) > [ASR](#) > [Online Systems](#) > TOWAIR

### TOWAIR Determination Results

[? HELP](#)

[New Search](#) [Printable Page](#)

A routine check of the coordinates, heights, and structure type you provided indicates that this structure does not require registration.

#### \*\*\* NOTICE \*\*\*

TOWAIR's findings are not definitive or binding, and we cannot guarantee that the data in TOWAIR are fully current and accurate. In some instances, TOWAIR may yield results that differ from application of the criteria set out in 47 C.F.R. Section 17.7 and 14 C.F.R. Section 77.13. A positive finding by TOWAIR recommending notification should be given considerable weight. On the other hand, a finding by TOWAIR recommending either for or against notification is not conclusive. It is the responsibility of each ASR participant to exercise due diligence to determine if it must coordinate its structure with the FAA. TOWAIR is only one tool designed to assist ASR participants in exercising this due diligence, and further investigation may be necessary to determine if FAA coordination is appropriate.

#### DETERMINATION Results

**PASS SLOPE(50:1): NO FAA REQ-RWY 10499 MTRS OR LESS & 5407.76 MTRS (5.40779 ) KM AWAY**

| Type | C/R | Latitude     | Longitude    | Name                  | Address               | Lowest Elevation (m) | Runway Length (m)  |
|------|-----|--------------|--------------|-----------------------|-----------------------|----------------------|--------------------|
| AIRP | R   | 34-34-46.00N | 084-01-3.00W | LUMPKIN COUNTY-WIMPYS | LUMPKIN DAHLONEGA, GA | 398.7                | 921.70000000000005 |

#### Your Specifications

##### NAD83 Coordinates

|           |                  |
|-----------|------------------|
| Latitude  | 34-33-10.5 north |
| Longitude | 083-58-05.0 west |

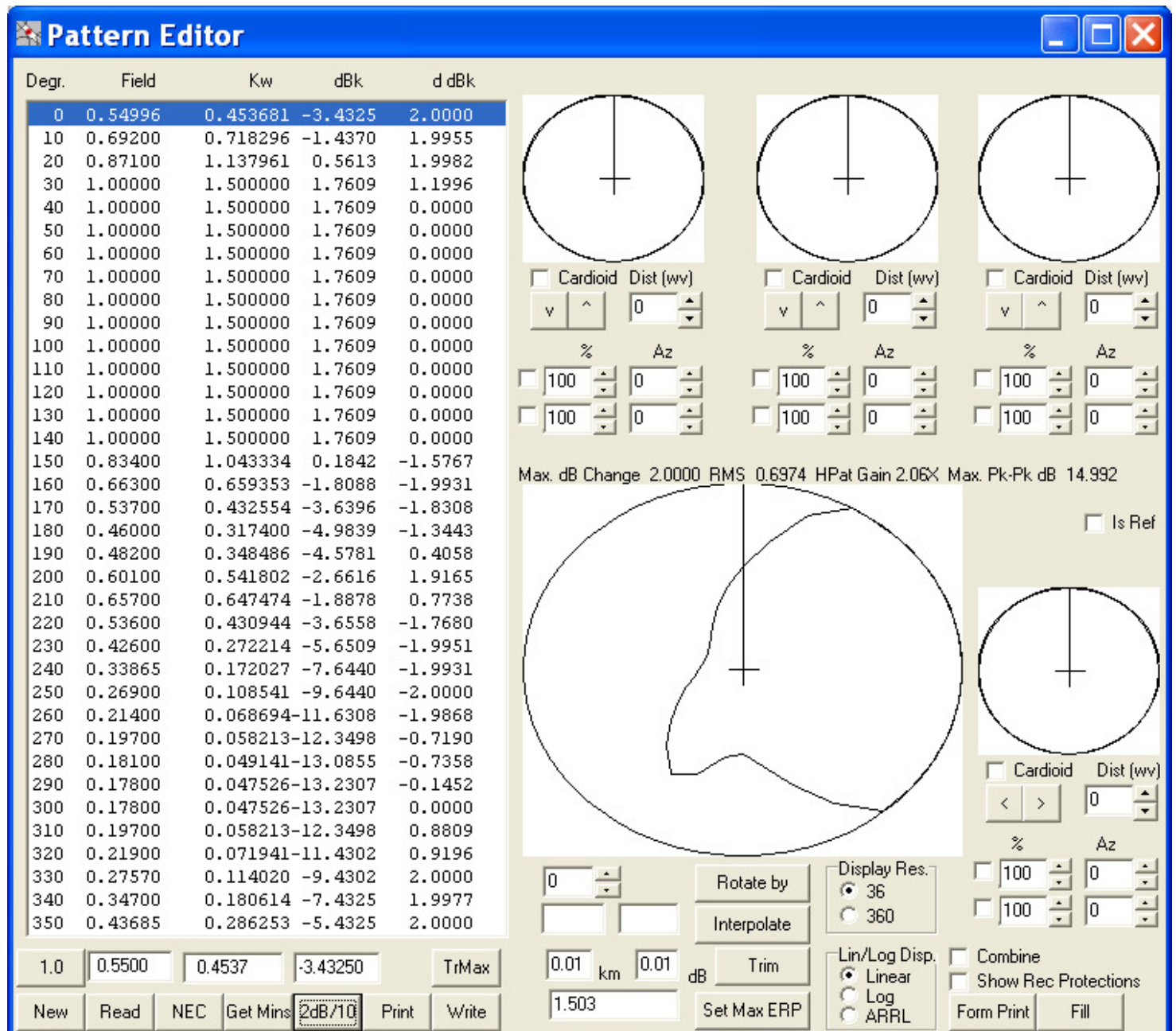
##### Measurements (Meters)

|                                |       |
|--------------------------------|-------|
| Overall Structure Height (AGL) | 57    |
| Support Structure Height (AGL) | 0     |
| Site Elevation (AMSL)          | 413.4 |

##### Structure Type

GTOWER - Guyed Structure Used for Communication Purposes

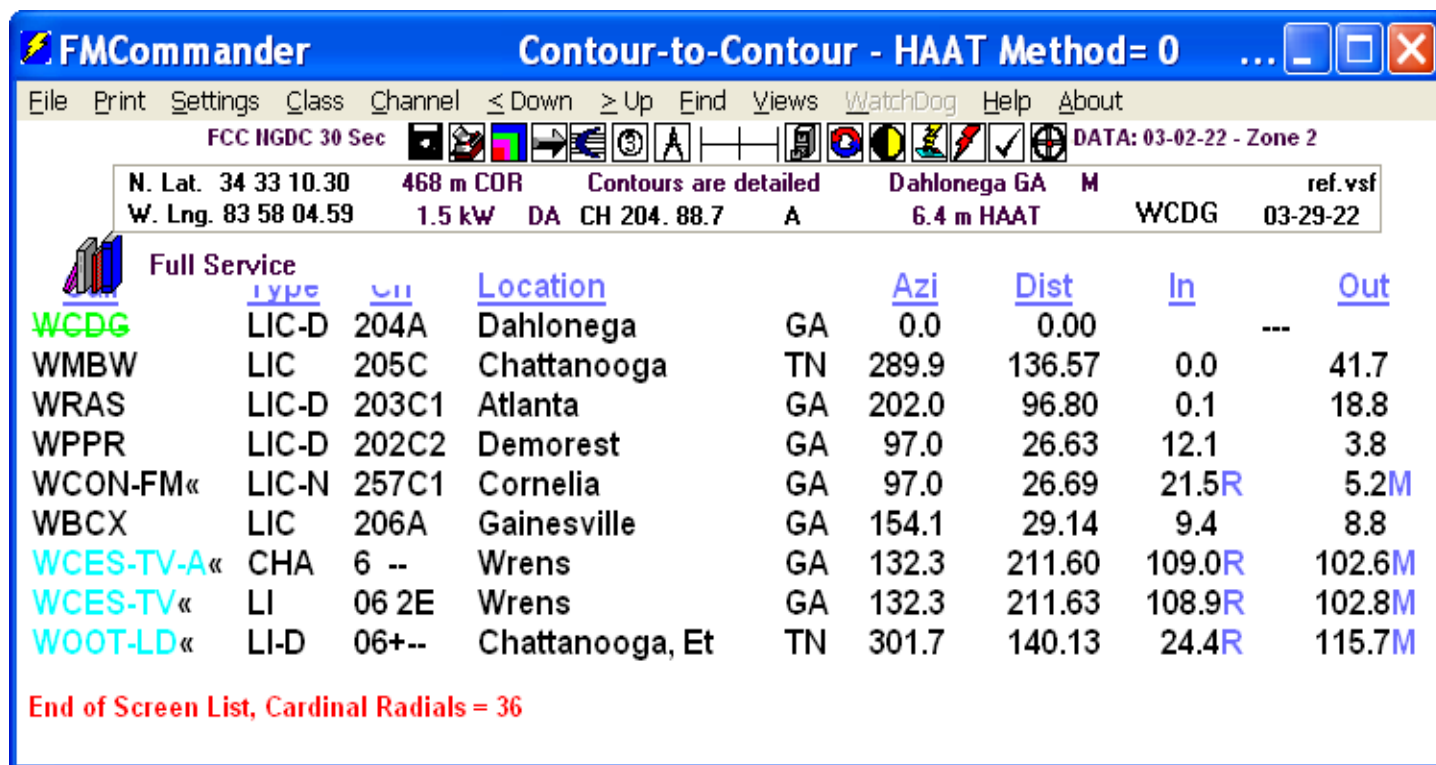
## Pattern Showing



Thus the pattern conforms to the 2 dB/10 degree and the 15 dB max/min rules. Truncation to 3 places in the LMS form may impact this slightly.



## FM Interference



This tabulation shows minimal distances at all azimuths, not just along the straight lines.

## Channel 6 Television

The two channel 6 television stations found are well beyond the required distance ("R") and need no further attention.

Exhibit 15

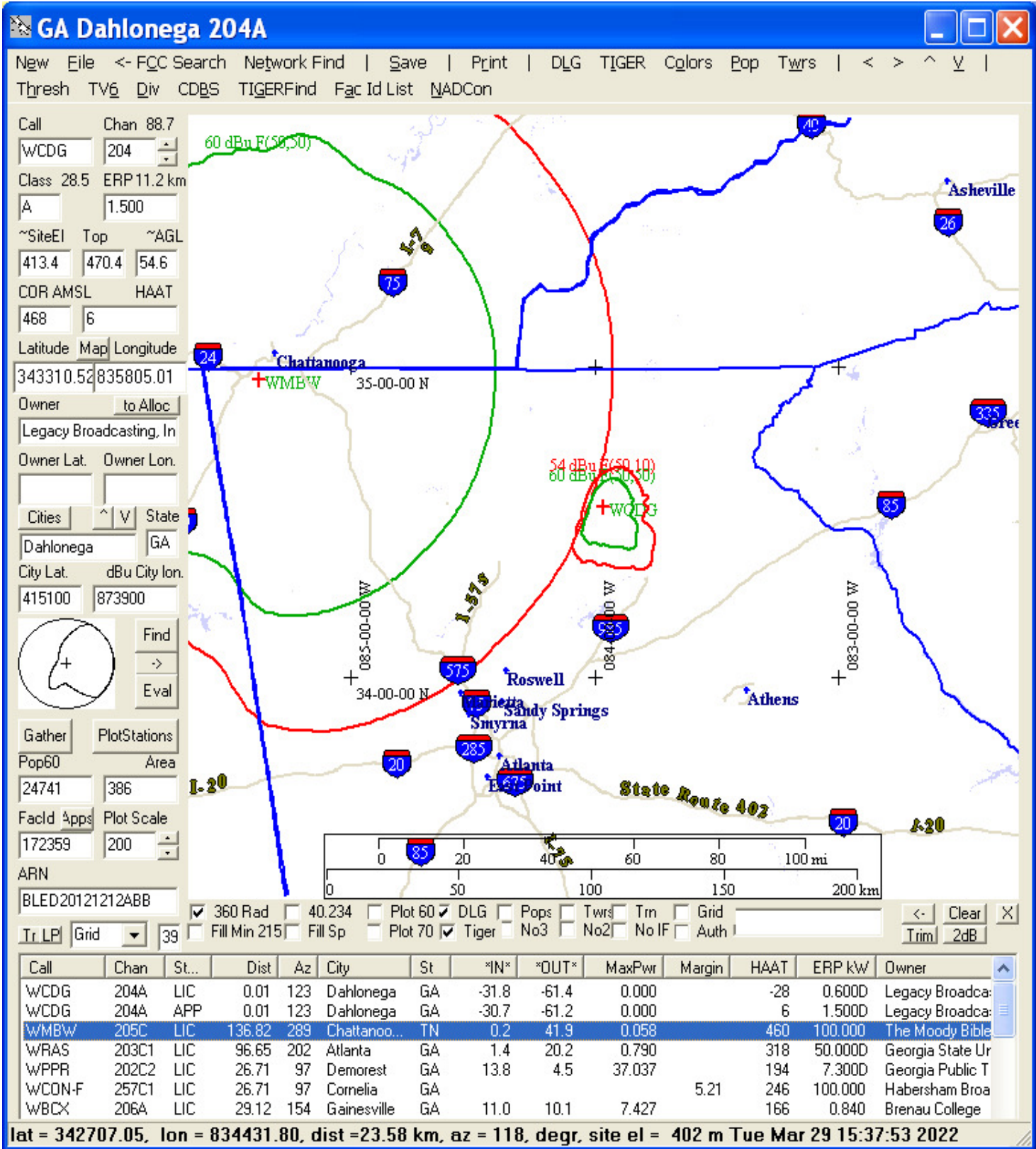
Legacy Broadcasting, Inc.

Reference 204A ERP 1.500 kW HAAT 6 m COR 468 m AMSL  
 343310.52 N 88.7 MHz Average protected F(50,50) 11.2 km  
 835805.01 W Dahlonega, GA

| ChnCl | Call                             | Stat | Azi  | Dist            | FacId  | Lat       | *IN*   | *OUT*            |                    |
|-------|----------------------------------|------|------|-----------------|--------|-----------|--------|------------------|--------------------|
|       | Pwr                              | COR  | HAAT |                 | ARN    | Lon       | Req.   | Margin           |                    |
|       | Owner                            |      |      | City            |        | St        |        |                  |                    |
| 204A  | WCDG                             | LIC  | 123  | 0.01            | 172359 | 343310.30 |        |                  | Present facility   |
|       | 0.600D                           | 434  | -28  | BLED20121212ABB |        | 835804.59 |        |                  |                    |
|       | Legacy Broadcasting, Dahlonega   |      |      |                 |        | GA        |        |                  |                    |
| 204A  | WCDG                             | APP  | 123  | 0.01            | 172359 | 343310.30 |        |                  | Proposed facility  |
|       | 1.500D                           | 468  | 6    | BLED20121212ABB |        | 835804.59 |        |                  |                    |
|       | Legacy Broadcasting, Dahlonega   |      |      |                 |        | GA        |        |                  |                    |
| 202C2 | WPPR                             | LIC  | 97   | 26.71           | 23949  | 343124.40 | 13.80  | 4.47             | See map            |
|       | 7.300D                           | 611  | 194  | BLED20080428ABF |        | 834045.61 |        |                  |                    |
|       | Georgia Public Telec Demorest    |      |      |                 |        | GA        |        |                  |                    |
| 257C1 | WCON-F                           | LIC  | 97   | 26.71           | 25814  | 343124.40 |        |                  |                    |
|       | 100.000                          | 662  | 246  | BLH20151210ACQ  |        | 834045.61 | 21.50R | 5.21M per 73.207 |                    |
|       | Habersham Broadcasti Cornelia    |      |      |                 |        | GA        |        |                  |                    |
| 203C1 | WRAS                             | LIC  | 202  | 96.65           | 23959  | 334441.41 | 1.35   | 20.23            | See map and FMOver |
|       | 50.000D                          | 596  | 318  | BMLD20180709AB  |        | 842135.70 |        |                  |                    |
|       | Georgia State Univer Atlanta     |      |      |                 |        | GA        |        |                  |                    |
| 205C  | WMBW                             | LIC  | 289  | 136.82          | 66021  | 345743.30 | 0.24   | 41.94            | See map and FMOver |
|       | 100.000                          | 760  | 460  | BMLD20020919AA  |        | 852239.89 |        |                  |                    |
|       | The Moody Bible Inst Chattanooga |      |      |                 |        | TN        |        |                  |                    |

This lower tabulation shows only direct line overlaps, NGDC 30 mapping data.

## Prop vs WMEW



# Find Information and Mapping Screen



Print Change Find Labels Lines Functions Contour Map Settings ~Scale Tools View Help



~ 1:500,000

FCC HGDC 30 Sec

Query Call

WMBW

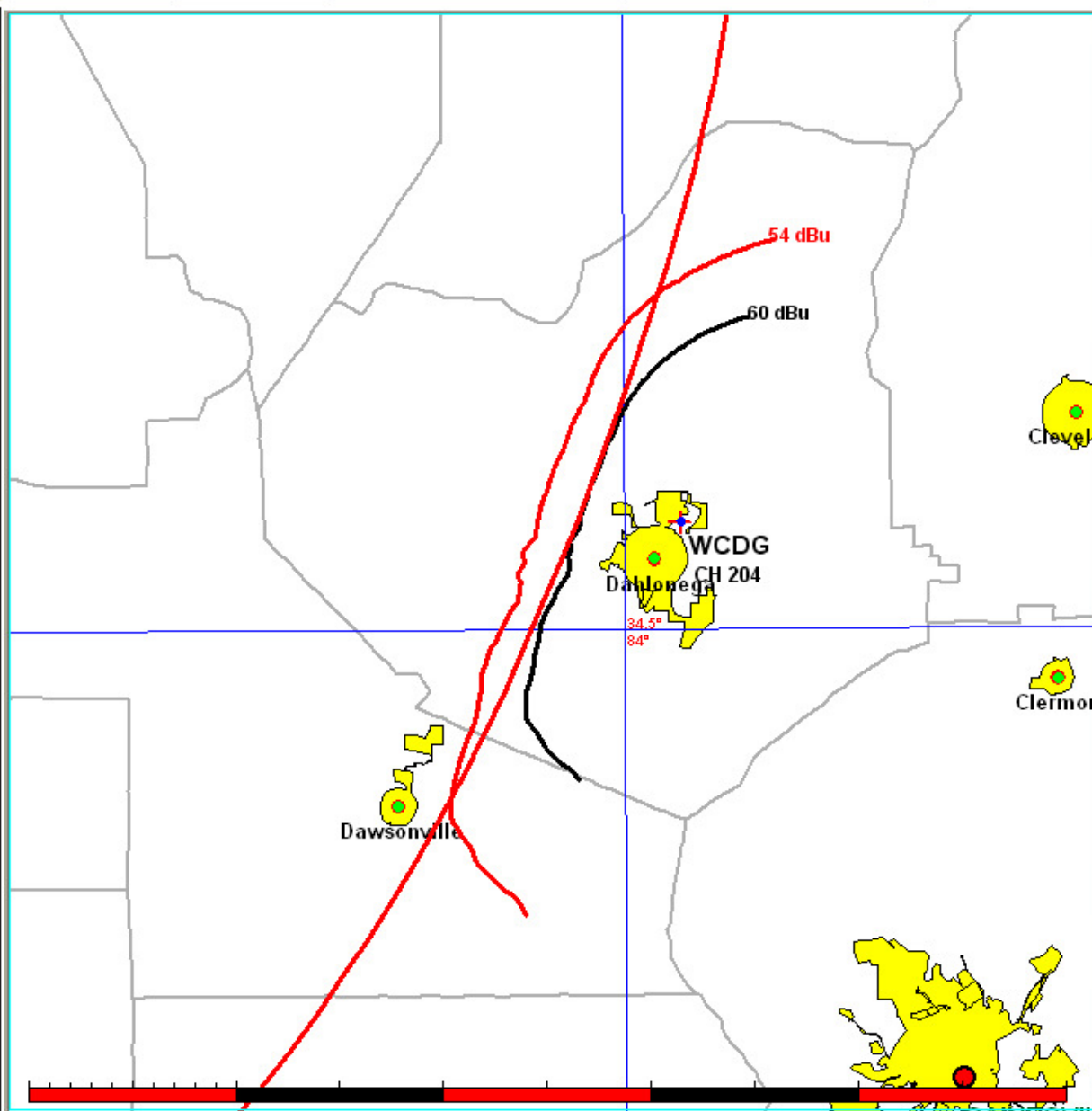
Execute Search

34 34 49.10 N  
84 01 30.72 W  
Elev=413.5 m

WCDG on CH 204 A  
ERP 1.5 kW DA  
HAAT 6.4m, AMSL 468.0m

WMBW on CH 205 C  
ERP 100.0 kW  
HAAT 460.0m, AMSL 760.0m

WCDG Ref\*  
WCDG Co  
WMBW 1st  
WRAS 1st  
WPPR 2nd  
WCON-FM I.F.  
WBCX 2nd  
WCES-TV-A  
WCES-TV  
WOOT-LD





03-29-2022

Terrain Data: FCC NGDC 30 Sec

FMOver Analysis

WCDG

WMBW BMLED20020919AAA

Channel = 204A  
 Max ERP = 1.5 kW  
 RCAMSL = 468 m  
 N. Lat. 34 33 10.30  
 W. Lng. 83 58 04.59  
 Protected  
 60 dBu

Channel = 205C  
 Max ERP = 100 kW  
 RCAMSL = 760 m  
 N. Lat. 34 57 43.30  
 W. Lng. 85 22 39.90  
 Interfering  
 54 dBu

| Azimuth<br>(degrees) | ERP<br>(kW) | HAAT<br>(m) | Dist<br>(km) | Azimuth<br>(degrees) | ERP<br>(kW) | HAAT<br>(m) | Dist<br>(km) | Actual<br>(dBu) | IX<br>(km) |
|----------------------|-------------|-------------|--------------|----------------------|-------------|-------------|--------------|-----------------|------------|
| 200.0                | 000.5418    | 0086.5      | 014.5        | 115.1                | 100.0000    | 0526.2      | 137.3        | 52.61           |            |
| 201.0                | 000.5519    | 0084.5      | 014.4        | 115.1                | 100.0000    | 0526.2      | 137.0        | 52.68           |            |
| 202.0                | 000.5622    | 0081.3      | 014.2        | 115.0                | 100.0000    | 0526.2      | 136.8        | 52.75           |            |
| 203.0                | 000.5725    | 0078.7      | 014.0        | 114.9                | 100.0000    | 0526.2      | 136.5        | 52.81           |            |
| 204.0                | 000.5829    | 0077.5      | 014.0        | 114.9                | 100.0000    | 0526.2      | 136.3        | 52.88           |            |
| 205.0                | 000.5935    | 0076.3      | 013.9        | 114.9                | 100.0000    | 0526.2      | 136.0        | 52.94           |            |
| 206.0                | 000.6041    | 0074.7      | 013.8        | 114.9                | 100.0000    | 0526.2      | 135.8        | 53.00           |            |
| 207.0                | 000.6148    | 0073.1      | 013.8        | 114.8                | 100.0000    | 0526.2      | 135.6        | 53.06           |            |
| 208.0                | 000.6256    | 0071.6      | 013.7        | 114.8                | 100.0000    | 0526.2      | 135.3        | 53.13           |            |
| 209.0                | 000.6365    | 0070.2      | 013.6        | 114.8                | 100.0000    | 0526.1      | 135.1        | 53.19           |            |
| 210.0                | 000.6475    | 0068.9      | 013.5        | 114.7                | 100.0000    | 0526.1      | 134.8        | 53.25           |            |
| 211.0                | 000.6238    | 0068.1      | 013.4        | 114.6                | 100.0000    | 0526.1      | 134.6        | 53.30           |            |
| 212.0                | 000.6007    | 0068.2      | 013.2        | 114.6                | 100.0000    | 0526.1      | 134.4        | 53.36           |            |
| 213.0                | 000.5779    | 0068.5      | 013.2        | 114.5                | 100.0000    | 0526.1      | 134.2        | 53.42           |            |
| 214.0                | 000.5556    | 0068.7      | 013.0        | 114.5                | 100.0000    | 0526.1      | 134.0        | 53.47           |            |
| 215.0                | 000.5337    | 0069.3      | 013.0        | 114.4                | 100.0000    | 0526.1      | 133.8        | 53.53           |            |
| 216.0                | 000.5123    | 0069.8      | 012.9        | 114.4                | 100.0000    | 0526.1      | 133.6        | 53.58           |            |
| 217.0                | 000.4913    | 0069.4      | 012.7        | 114.3                | 100.0000    | 0526.0      | 133.4        | 53.63           |            |
| 218.0                | 000.4707    | 0067.8      | 012.5        | 114.2                | 100.0000    | 0526.0      | 133.2        | 53.67           |            |
| 219.0                | 000.4506    | 0065.6      | 012.2        | 114.0                | 100.0000    | 0525.9      | 133.1        | 53.70           |            |
| 220.0                | 000.4309    | 0063.1      | 011.9        | 113.9                | 100.0000    | 0525.9      | 133.0        | 53.73           |            |
| 221.0                | 000.4134    | 0060.3      | 011.5        | 113.7                | 100.0000    | 0525.8      | 132.9        | 53.76           |            |
| 222.0                | 000.3963    | 0057.3      | 011.1        | 113.5                | 100.0000    | 0525.7      | 132.8        | 53.78           |            |
| 223.0                | 000.3795    | 0054.7      | 010.8        | 113.3                | 100.0000    | 0525.6      | 132.7        | 53.79           |            |
| 224.0                | 000.3631    | 0052.9      | 010.5        | 113.2                | 100.0000    | 0525.5      | 132.6        | 53.81           |            |
| 225.0                | 000.3470    | 0051.5      | 010.2        | 113.1                | 100.0000    | 0525.5      | 132.5        | 53.83           |            |
| 226.0                | 000.3313    | 0050.0      | 010.0        | 112.9                | 100.0000    | 0525.4      | 132.5        | 53.85           |            |
| 227.0                | 000.3160    | 0048.5      | 009.7        | 112.8                | 100.0000    | 0525.3      | 132.4        | 53.86           |            |
| 228.0                | 000.3011    | 0047.7      | 009.5        | 112.7                | 100.0000    | 0525.3      | 132.4        | 53.87           |            |
| 229.0                | 000.2865    | 0047.3      | 009.3        | 112.6                | 100.0000    | 0525.2      | 132.3        | 53.89           |            |
| 230.0                | 000.2722    | 0046.6      | 009.1        | 112.5                | 100.0000    | 0525.2      | 132.2        | 53.91           |            |
| 231.0                | 000.2612    | 0045.4      | 008.9        | 112.4                | 100.0000    | 0525.1      | 132.2        | 53.91           |            |
| 232.0                | 000.2503    | 0044.1      | 008.6        | 112.2                | 100.0000    | 0525.1      | 132.2        | 53.92           |            |
| 233.0                | 000.2398    | 0042.8      | 008.4        | 112.1                | 100.0000    | 0525.0      | 132.2        | 53.92           |            |
| 234.0                | 000.2294    | 0041.3      | 008.1        | 112.0                | 100.0000    | 0525.0      | 132.2        | 53.91           |            |
| 235.0                | 000.2193    | 0039.5      | 007.8        | 111.8                | 100.0000    | 0524.9      | 132.2        | 53.90           |            |
| 236.0                | 000.2094    | 0037.8      | 007.5        | 111.7                | 100.0000    | 0524.9      | 132.3        | 53.89           |            |
| 237.0                | 000.1997    | 0036.6      | 007.3        | 111.6                | 100.0000    | 0524.9      | 132.3        | 53.89           |            |
| 238.0                | 000.1902    | 0035.4      | 007.1        | 111.5                | 100.0000    | 0524.9      | 132.3        | 53.89           |            |
| 239.0                | 000.1810    | 0033.9      | 006.9        | 111.4                | 100.0000    | 0524.9      | 132.3        | 53.88           |            |
| 240.0                | 000.1720    | 0031.9      | 006.6        | 111.2                | 100.0000    | 0524.9      | 132.4        | 53.86           |            |
| 241.0                | 000.1650    | 0030.2      | 006.4        | 111.1                | 100.0000    | 0525.0      | 132.4        | 53.85           |            |
| 242.0                | 000.1582    | 0029.2      | 006.3        | 111.1                | 100.0000    | 0525.0      | 132.4        | 53.85           |            |

|       |          |         |       |  |       |          |        |       |          |
|-------|----------|---------|-------|--|-------|----------|--------|-------|----------|
| 243.0 | 000.1515 | 0029.0  | 006.3 |  | 111.0 | 100.0000 | 0525.0 | 132.4 | 53.86    |
| 244.0 | 000.1449 | 0028.9  | 006.2 |  | 111.0 | 100.0000 | 0525.0 | 132.3 | 53.87    |
| 245.0 | 000.1385 | 0029.4  | 006.1 |  | 110.9 | 100.0000 | 0525.0 | 132.3 | 53.88    |
| 246.0 | 000.1322 | 0030.0  | 006.0 |  | 110.9 | 100.0000 | 0525.0 | 132.3 | 53.89    |
| 247.0 | 000.1261 | 0030.8  | 006.0 |  | 110.8 | 100.0000 | 0525.0 | 132.2 | 53.91    |
| 248.0 | 000.1201 | 0031.6  | 006.0 |  | 110.8 | 100.0000 | 0525.0 | 132.1 | 53.93    |
| 249.0 | 000.1142 | 0031.9  | 006.0 |  | 110.8 | 100.0000 | 0525.0 | 132.1 | 53.94    |
| 250.0 | 000.1085 | 0031.8  | 005.9 |  | 110.7 | 100.0000 | 0525.0 | 132.1 | 53.94    |
| 251.0 | 000.1041 | 0031.2  | 005.8 |  | 110.6 | 100.0000 | 0525.0 | 132.1 | 53.94    |
| 252.0 | 000.0998 | 0031.0  | 005.7 |  | 110.6 | 100.0000 | 0525.1 | 132.1 | 53.94    |
| 253.0 | 000.0956 | 0031.2  | 005.7 |  | 110.5 | 100.0000 | 0525.1 | 132.1 | 53.95    |
| 254.0 | 000.0915 | 0032.1  | 005.7 |  | 110.5 | 100.0000 | 0525.1 | 132.0 | 53.96    |
| 255.0 | 000.0875 | 0032.9  | 005.7 |  | 110.5 | 100.0000 | 0525.1 | 131.9 | 53.98    |
| 256.0 | 000.0835 | 0033.0  | 005.6 |  | 110.4 | 100.0000 | 0525.1 | 131.9 | 53.98    |
| 257.0 | 000.0797 | 0032.7  | 005.5 |  | 110.4 | 100.0000 | 0525.1 | 132.0 | 53.98    |
| 258.0 | 000.0759 | 0032.1  | 005.4 |  | 110.3 | 100.0000 | 0525.1 | 132.0 | 53.97    |
| 259.0 | 000.0723 | 0031.3  | 005.3 |  | 110.2 | 100.0000 | 0525.2 | 132.1 | 53.95    |
| 260.0 | 000.0687 | 0030.0  | 005.1 |  | 110.2 | 100.0000 | 0525.2 | 132.2 | 53.93    |
| 261.0 | 000.0676 | 0027.9  | 005.1 |  | 110.1 | 100.0000 | 0525.2 | 132.1 | 53.93    |
| 262.0 | 000.0665 | 0025.1  | 005.1 |  | 110.1 | 100.0000 | 0525.2 | 132.1 | 53.94    |
| 263.0 | 000.0655 | 0022.8  | 005.1 |  | 110.0 | 100.0000 | 0525.2 | 132.1 | 53.95    |
| 264.0 | 000.0644 | 0021.0  | 005.0 |  | 110.0 | 100.0000 | 0525.2 | 132.1 | 53.95    |
| 265.0 | 000.0633 | 0019.3  | 005.0 |  | 110.0 | 100.0000 | 0525.2 | 132.0 | 53.96    |
| 266.0 | 000.0623 | 0017.4  | 005.0 |  | 109.9 | 100.0000 | 0525.3 | 132.0 | 53.96    |
| 267.0 | 000.0613 | 0015.1  | 005.0 |  | 109.9 | 100.0000 | 0525.3 | 132.0 | 53.97    |
| 268.0 | 000.0602 | 0013.1  | 004.9 |  | 109.9 | 100.0000 | 0525.3 | 132.0 | 53.97    |
| 269.0 | 000.0592 | 0012.3  | 004.9 |  | 109.8 | 100.0000 | 0525.3 | 132.0 | 53.97    |
| 270.0 | 000.0582 | 0013.8  | 004.9 |  | 109.8 | 100.0000 | 0525.3 | 132.0 | 53.98    |
| 271.0 | 000.0573 | 0015.3  | 004.9 |  | 109.7 | 100.0000 | 0525.3 | 132.0 | 53.98    |
| 272.0 | 000.0563 | 0016.9  | 004.9 |  | 109.7 | 100.0000 | 0525.4 | 132.0 | 53.98    |
| 273.0 | 000.0554 | 0017.7  | 004.8 |  | 109.7 | 100.0000 | 0525.4 | 131.9 | 53.99    |
| 274.0 | 000.0545 | 0017.9  | 004.8 |  | 109.6 | 100.0000 | 0525.4 | 131.9 | 53.99    |
| 275.0 | 000.0536 | 0017.6  | 004.8 |  | 109.6 | 100.0000 | 0525.4 | 131.9 | 53.99    |
| 276.0 | 000.0527 | 0017.2  | 004.8 |  | 109.6 | 100.0000 | 0525.4 | 131.9 | 53.99    |
| 277.0 | 000.0518 | 0018.6  | 004.8 |  | 109.5 | 100.0000 | 0525.5 | 131.9 | 53.99    |
| 278.0 | 000.0509 | 0019.4  | 004.7 |  | 109.5 | 100.0000 | 0525.5 | 131.9 | 53.99    |
| 279.0 | 000.0500 | 0018.3  | 004.7 |  | 109.4 | 100.0000 | 0525.5 | 132.0 | 53.99    |
| 280.0 | 000.0491 | 0015.8  | 004.7 |  | 109.4 | 100.0000 | 0525.5 | 132.0 | 53.99    |
| 281.0 | 000.0490 | 0012.7  | 004.7 |  | 109.4 | 100.0000 | 0525.5 | 131.9 | 53.99    |
| 282.0 | 000.0488 | 0009.1  | 004.7 |  | 109.3 | 100.0000 | 0525.6 | 131.9 | 53.99    |
| 283.0 | 000.0487 | 0007.7  | 004.7 |  | 109.3 | 100.0000 | 0525.6 | 131.9 | 53.99    |
| 284.0 | 000.0485 | 0007.4  | 004.7 |  | 109.3 | 100.0000 | 0525.6 | 131.9 | 54.00    |
| 285.0 | 000.0483 | 0007.8  | 004.7 |  | 109.2 | 100.0000 | 0525.6 | 131.9 | 54.00    |
| 286.0 | 000.0482 | 0008.3  | 004.7 |  | 109.2 | 100.0000 | 0525.6 | 131.9 | 54.00    |
| 287.0 | 000.0480 | 0008.2  | 004.7 |  | 109.2 | 100.0000 | 0525.7 | 131.9 | 54.00    |
| 288.0 | 000.0478 | 0007.0  | 004.7 |  | 109.1 | 100.0000 | 0525.7 | 131.9 | 54.00    |
| 289.0 | 000.0477 | 0004.9  | 004.6 |  | 109.1 | 100.0000 | 0525.7 | 131.9 | 54.00<-- |
| 290.0 | 000.0475 | 0002.2  | 004.6 |  | 109.0 | 100.0000 | 0525.7 | 131.9 | 54.00    |
| 291.0 | 000.0475 | -0001.0 | 004.6 |  | 109.0 | 100.0000 | 0525.7 | 131.9 | 54.00    |
| 292.0 | 000.0475 | -0003.5 | 004.6 |  | 109.0 | 100.0000 | 0525.8 | 131.9 | 54.00    |
| 293.0 | 000.0475 | -0005.4 | 004.6 |  | 108.9 | 100.0000 | 0525.8 | 131.9 | 54.00    |
| 294.0 | 000.0475 | -0006.8 | 004.6 |  | 108.9 | 100.0000 | 0525.8 | 131.9 | 54.00    |
| 295.0 | 000.0475 | -0007.2 | 004.6 |  | 108.9 | 100.0000 | 0525.8 | 131.9 | 54.00    |
| 296.0 | 000.0475 | -0006.3 | 004.6 |  | 108.8 | 100.0000 | 0525.8 | 132.0 | 53.99    |
| 297.0 | 000.0475 | -0003.7 | 004.6 |  | 108.8 | 100.0000 | 0525.9 | 132.0 | 53.99    |
| 298.0 | 000.0475 | -0000.6 | 004.6 |  | 108.8 | 100.0000 | 0525.9 | 132.0 | 53.99    |
| 299.0 | 000.0475 | 0000.6  | 004.6 |  | 108.7 | 100.0000 | 0525.9 | 132.0 | 53.99    |
| 300.0 | 000.0475 | -0000.5 | 004.6 |  | 108.7 | 100.0000 | 0525.9 | 132.0 | 53.98    |
| 301.0 | 000.0485 | -0003.9 | 004.7 |  | 108.7 | 100.0000 | 0525.9 | 132.0 | 53.99    |
| 302.0 | 000.0496 | -0007.1 | 004.7 |  | 108.6 | 100.0000 | 0525.9 | 132.0 | 53.99    |

|       |          |         |       |  |       |          |        |       |       |
|-------|----------|---------|-------|--|-------|----------|--------|-------|-------|
| 303.0 | 000.0506 | -0008.7 | 004.7 |  | 108.6 | 100.0000 | 0526.0 | 132.0 | 53.99 |
| 304.0 | 000.0517 | -0009.4 | 004.8 |  | 108.5 | 100.0000 | 0526.0 | 132.0 | 53.99 |
| 305.0 | 000.0527 | -0011.0 | 004.8 |  | 108.5 | 100.0000 | 0526.0 | 132.0 | 53.99 |
| 306.0 | 000.0538 | -0014.9 | 004.8 |  | 108.5 | 100.0000 | 0526.0 | 132.0 | 53.99 |
| 307.0 | 000.0549 | -0020.9 | 004.8 |  | 108.4 | 100.0000 | 0526.0 | 132.0 | 54.00 |
| 308.0 | 000.0560 | -0028.0 | 004.9 |  | 108.4 | 100.0000 | 0526.0 | 132.0 | 53.99 |
| 309.0 | 000.0571 | -0035.1 | 004.9 |  | 108.4 | 100.0000 | 0526.1 | 132.0 | 53.99 |
| 310.0 | 000.0582 | -0041.2 | 004.9 |  | 108.3 | 100.0000 | 0526.1 | 132.0 | 53.99 |
| 311.0 | 000.0595 | -0046.8 | 004.9 |  | 108.3 | 100.0000 | 0526.1 | 132.0 | 53.99 |
| 312.0 | 000.0608 | -0053.4 | 005.0 |  | 108.2 | 100.0000 | 0526.1 | 132.0 | 53.99 |
| 313.0 | 000.0622 | -0061.7 | 005.0 |  | 108.2 | 100.0000 | 0526.1 | 132.0 | 53.99 |
| 314.0 | 000.0635 | -0070.9 | 005.0 |  | 108.2 | 100.0000 | 0526.1 | 132.0 | 53.99 |
| 315.0 | 000.0649 | -0080.1 | 005.0 |  | 108.1 | 100.0000 | 0526.1 | 132.0 | 53.98 |
| 316.0 | 000.0663 | -0089.1 | 005.1 |  | 108.1 | 100.0000 | 0526.1 | 132.0 | 53.98 |
| 317.0 | 000.0677 | -0098.5 | 005.1 |  | 108.0 | 100.0000 | 0526.2 | 132.1 | 53.98 |
| 318.0 | 000.0691 | -0108.7 | 005.1 |  | 108.0 | 100.0000 | 0526.2 | 132.1 | 53.97 |
| 319.0 | 000.0705 | -0120.3 | 005.2 |  | 108.0 | 100.0000 | 0526.2 | 132.1 | 53.97 |
| 320.0 | 000.0719 | -0131.7 | 005.2 |  | 107.9 | 100.0000 | 0526.2 | 132.1 | 53.96 |
| 321.0 | 000.0757 | -0141.1 | 005.3 |  | 107.9 | 100.0000 | 0526.2 | 132.1 | 53.96 |
| 322.0 | 000.0796 | -0148.8 | 005.3 |  | 107.8 | 100.0000 | 0526.2 | 132.1 | 53.97 |
| 323.0 | 000.0836 | -0155.5 | 005.4 |  | 107.8 | 100.0000 | 0526.2 | 132.1 | 53.97 |
| 324.0 | 000.0876 | -0161.3 | 005.4 |  | 107.7 | 100.0000 | 0526.3 | 132.1 | 53.97 |
| 325.0 | 000.0918 | -0165.8 | 005.5 |  | 107.7 | 100.0000 | 0526.3 | 132.1 | 53.97 |
| 326.0 | 000.0960 | -0169.4 | 005.6 |  | 107.6 | 100.0000 | 0526.3 | 132.1 | 53.96 |
| 327.0 | 000.1004 | -0173.0 | 005.6 |  | 107.6 | 100.0000 | 0526.3 | 132.1 | 53.96 |
| 328.0 | 000.1048 | -0175.9 | 005.7 |  | 107.5 | 100.0000 | 0526.3 | 132.1 | 53.96 |
| 329.0 | 000.1094 | -0177.2 | 005.8 |  | 107.5 | 100.0000 | 0526.3 | 132.2 | 53.95 |
| 330.0 | 000.1140 | -0176.2 | 005.8 |  | 107.4 | 100.0000 | 0526.4 | 132.2 | 53.95 |
| 331.0 | 000.1200 | -0170.5 | 005.9 |  | 107.4 | 100.0000 | 0526.4 | 132.2 | 53.95 |
| 332.0 | 000.1261 | -0158.8 | 006.0 |  | 107.3 | 100.0000 | 0526.4 | 132.2 | 53.94 |
| 333.0 | 000.1324 | -0144.2 | 006.0 |  | 107.3 | 100.0000 | 0526.4 | 132.2 | 53.94 |
| 334.0 | 000.1388 | -0132.7 | 006.1 |  | 107.2 | 100.0000 | 0526.4 | 132.3 | 53.93 |
| 335.0 | 000.1454 | -0127.5 | 006.2 |  | 107.2 | 100.0000 | 0526.5 | 132.3 | 53.92 |
| 336.0 | 000.1521 | -0126.0 | 006.3 |  | 107.1 | 100.0000 | 0526.5 | 132.3 | 53.92 |
| 337.0 | 000.1590 | -0124.4 | 006.3 |  | 107.0 | 100.0000 | 0526.5 | 132.3 | 53.91 |
| 338.0 | 000.1661 | -0121.9 | 006.4 |  | 107.0 | 100.0000 | 0526.5 | 132.4 | 53.90 |
| 339.0 | 000.1733 | -0119.9 | 006.5 |  | 106.9 | 100.0000 | 0526.6 | 132.4 | 53.89 |
| 340.0 | 000.1806 | -0120.1 | 006.5 |  | 106.9 | 100.0000 | 0526.6 | 132.5 | 53.87 |
| 341.0 | 000.1901 | -0120.8 | 006.6 |  | 106.8 | 100.0000 | 0526.6 | 132.5 | 53.86 |
| 342.0 | 000.1998 | -0121.7 | 006.7 |  | 106.8 | 100.0000 | 0526.6 | 132.6 | 53.85 |
| 343.0 | 000.2098 | -0124.7 | 006.8 |  | 106.7 | 100.0000 | 0526.6 | 132.6 | 53.84 |
| 344.0 | 000.2200 | -0131.2 | 006.9 |  | 106.6 | 100.0000 | 0526.7 | 132.7 | 53.83 |
| 345.0 | 000.2304 | -0137.8 | 006.9 |  | 106.6 | 100.0000 | 0526.7 | 132.7 | 53.81 |
| 346.0 | 000.2411 | -0139.6 | 007.0 |  | 106.5 | 100.0000 | 0526.7 | 132.8 | 53.80 |
| 347.0 | 000.2520 | -0138.4 | 007.1 |  | 106.5 | 100.0000 | 0526.8 | 132.9 | 53.78 |
| 348.0 | 000.2632 | -0136.7 | 007.2 |  | 106.4 | 100.0000 | 0526.8 | 132.9 | 53.76 |
| 349.0 | 000.2746 | -0139.0 | 007.3 |  | 106.4 | 100.0000 | 0526.8 | 133.0 | 53.75 |
| 350.0 | 000.2863 | -0147.0 | 007.3 |  | 106.3 | 100.0000 | 0526.8 | 133.1 | 53.73 |
| 351.0 | 000.3013 | -0160.2 | 007.4 |  | 106.3 | 100.0000 | 0526.9 | 133.1 | 53.71 |
| 352.0 | 000.3167 | -0170.3 | 007.5 |  | 106.2 | 100.0000 | 0526.9 | 133.2 | 53.69 |
| 353.0 | 000.3325 | -0165.1 | 007.6 |  | 106.1 | 100.0000 | 0526.9 | 133.3 | 53.67 |
| 354.0 | 000.3486 | -0157.1 | 007.7 |  | 106.1 | 100.0000 | 0527.0 | 133.4 | 53.65 |
| 355.0 | 000.3652 | -0147.0 | 007.8 |  | 106.0 | 100.0000 | 0527.0 | 133.5 | 53.62 |
| 356.0 | 000.3821 | -0140.0 | 007.9 |  | 106.0 | 100.0000 | 0527.1 | 133.6 | 53.60 |
| 357.0 | 000.3994 | -0135.6 | 008.0 |  | 105.9 | 100.0000 | 0527.1 | 133.7 | 53.58 |
| 358.0 | 000.4171 | -0135.9 | 008.1 |  | 105.8 | 100.0000 | 0527.2 | 133.8 | 53.55 |
| 359.0 | 000.4352 | -0138.0 | 008.2 |  | 105.8 | 100.0000 | 0527.2 | 133.9 | 53.52 |
| 000.0 | 000.4537 | -0139.9 | 008.3 |  | 105.7 | 100.0000 | 0527.3 | 134.0 | 53.50 |
| 001.0 | 000.4774 | -0141.4 | 008.4 |  | 105.7 | 100.0000 | 0527.3 | 134.1 | 53.47 |
| 002.0 | 000.5018 | -0142.9 | 008.5 |  | 105.6 | 100.0000 | 0527.3 | 134.2 | 53.44 |

|       |          |         |       |  |       |          |        |       |       |
|-------|----------|---------|-------|--|-------|----------|--------|-------|-------|
| 003.0 | 000.5267 | -0143.9 | 008.6 |  | 105.5 | 100.0000 | 0527.4 | 134.3 | 53.41 |
| 004.0 | 000.5523 | -0146.1 | 008.7 |  | 105.5 | 100.0000 | 0527.4 | 134.4 | 53.38 |
| 005.0 | 000.5784 | -0144.7 | 008.8 |  | 105.4 | 100.0000 | 0527.5 | 134.6 | 53.35 |
| 006.0 | 000.6052 | -0135.7 | 008.9 |  | 105.4 | 100.0000 | 0527.5 | 134.7 | 53.31 |
| 007.0 | 000.6326 | -0127.0 | 009.0 |  | 105.3 | 100.0000 | 0527.6 | 134.8 | 53.28 |
| 008.0 | 000.6605 | -0116.2 | 009.2 |  | 105.2 | 100.0000 | 0527.6 | 135.0 | 53.24 |
| 009.0 | 000.6891 | -0107.9 | 009.3 |  | 105.2 | 100.0000 | 0527.7 | 135.1 | 53.21 |
| 010.0 | 000.7183 | -0106.0 | 009.4 |  | 105.1 | 100.0000 | 0527.7 | 135.3 | 53.17 |
| 011.0 | 000.7560 | -0105.2 | 009.5 |  | 105.1 | 100.0000 | 0527.7 | 135.4 | 53.13 |
| 012.0 | 000.7946 | -0104.0 | 009.6 |  | 105.0 | 100.0000 | 0527.8 | 135.6 | 53.09 |
| 013.0 | 000.8342 | -0099.7 | 009.7 |  | 105.0 | 100.0000 | 0527.8 | 135.8 | 53.05 |
| 014.0 | 000.8748 | -0092.6 | 009.8 |  | 104.9 | 100.0000 | 0527.9 | 135.9 | 53.01 |
| 015.0 | 000.9163 | -0082.6 | 009.9 |  | 104.9 | 100.0000 | 0527.9 | 136.1 | 52.96 |
| 016.0 | 000.9588 | -0069.8 | 010.1 |  | 104.8 | 100.0000 | 0528.0 | 136.3 | 52.92 |
| 017.0 | 001.0023 | -0059.3 | 010.2 |  | 104.8 | 100.0000 | 0528.0 | 136.4 | 52.87 |
| 018.0 | 001.0467 | -0053.5 | 010.3 |  | 104.7 | 100.0000 | 0528.0 | 136.6 | 52.83 |
| 019.0 | 001.0921 | -0050.4 | 010.4 |  | 104.7 | 100.0000 | 0528.1 | 136.8 | 52.78 |
| ---   | -----    | -----   | ----- |  | ----- | -----    | -----  | ----- | ----- |



GA Dhlonega 204A

New

File

<- FCC Search

Network Find

| Save

| Print

| DLG

TIGER

Colors

Pop

Twrs

| <

>

^

v

|

Thresh

TV6

Div

CDBS

TIGERFind

Fac Id List

NADCon

Call

Chan 88.7

WCDG

204

Class 28.5

ERP 11.2 km

A

1.500

~SiteEl

Top

~AGL

413.4

470.4

54.6

COR AMSL

HAAT

468

6

Latitude

Map

Longitude

343310.52

835805.01

Owner

to Alloc

Legacy Broadcasting, In

Owner Lat.

Owner Lon.

Cities

^

v

State

Dahlonega

GA

City Lat.

dBu City Lon.

415100

873900

Find

->

Eval

Gather

Plot Stations

Pop60

Area

24741

386

FacId

Apps

Plot Scale

172359

250

ARN

BLED20121212ABB

Tr LP

Grid

39

360 Rad

40.234

Plot 60

DLG

Pops

Twrs

Tm

Grid

Fill Min 215

Fill Sp

Plot 70

Tiger

No3

No2

No IF

Auth

<-

Clear

X

Trim

2dB

Call

Chan

St...

Dist

Az

City

St

\*IN\*

\*OUT\*

MaxPwr

Margin

HAAT

ERP kW

Owner

WCDG

204A

LIC

0.01

123

Dahlonega

GA

-31.8

-61.4

0.000

-28

0.6000

Legacy Broadca

WCDG

204A

APP

0.01

123

Dahlonega

GA

-30.7

-61.2

0.000

6

1.5000

Legacy Broadca

WMBW

205C

LIC

136.82

289

Chattano...

TN

0.2

41.9

0.058

460

100.000

The Moody Bible

WRAS

203C1

LIC

96.65

202

Atlanta

GA

1.4

20.2

0.790

318

50.0000

Georgia State Ur

WPPR

202C2

LIC

26.71

97

Demorest

GA

13.8

4.5

37.037

194

7.3000

Georgia Public T

WCON-F

257C1

LIC

26.71

97

Cornelia

GA

5.21

246

100.000

Habersham Broa

WBCX

206A

LIC

29.12

154

Gainesville

GA

11.0

10.1

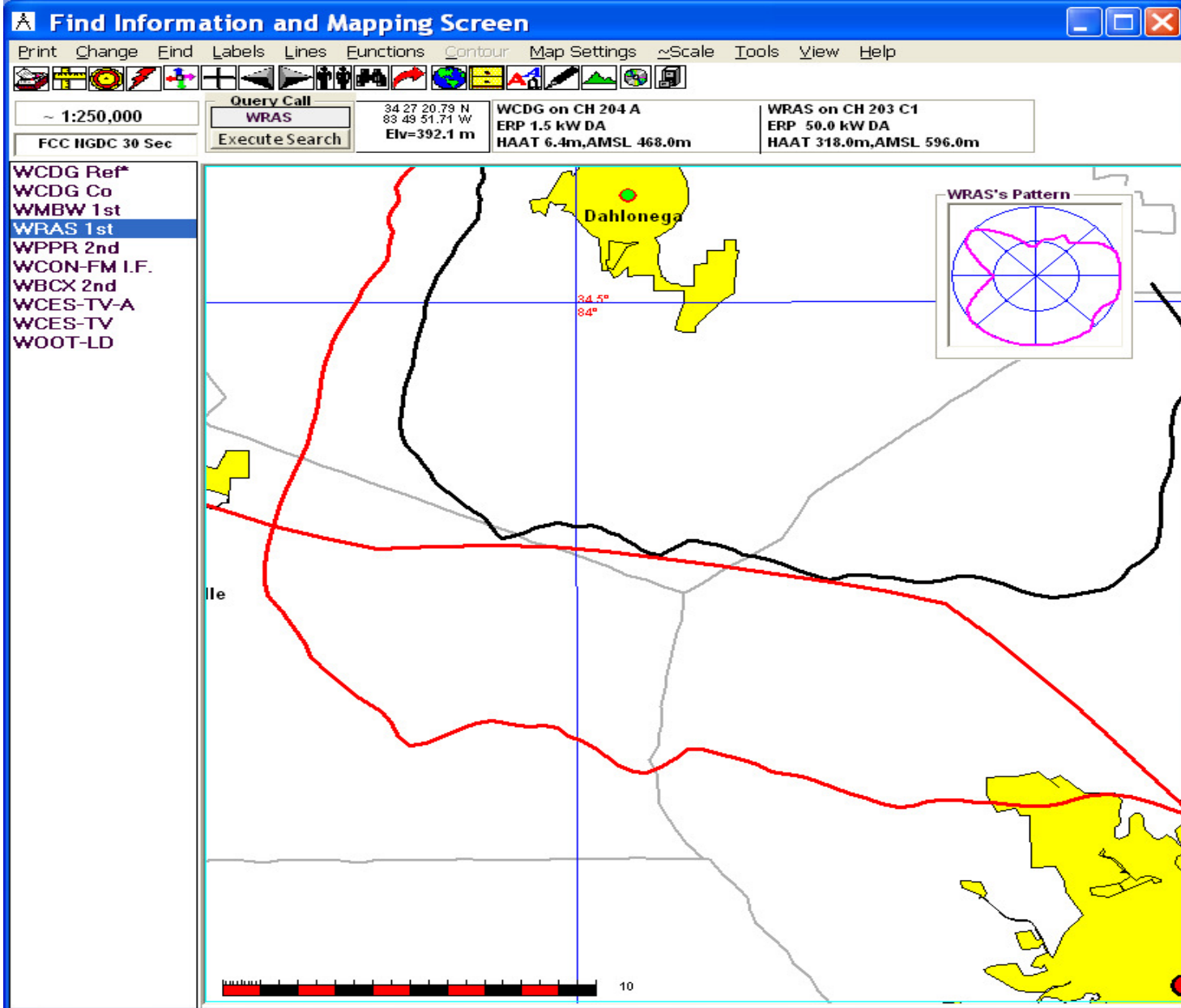
7.427

166

0.840

Brenau College

lat = 353345.27, lon = 831235.12, dist = 131.65 km, az = 32, degr, site el = 1078 m Tue Mar 29 15:43:13 2022



03-29-2022

Terrain Data: FCC NGDC 30 Sec

FMOver Analysis

WCDG

WRAS BMLED20180709ABI

Channel = 204A  
 Max ERP = 1.5 kW  
 RCAMSL = 468 m  
 N. Lat. 34 33 10.30  
 W. Lng. 83 58 04.59  
 Protected  
 60 dBu

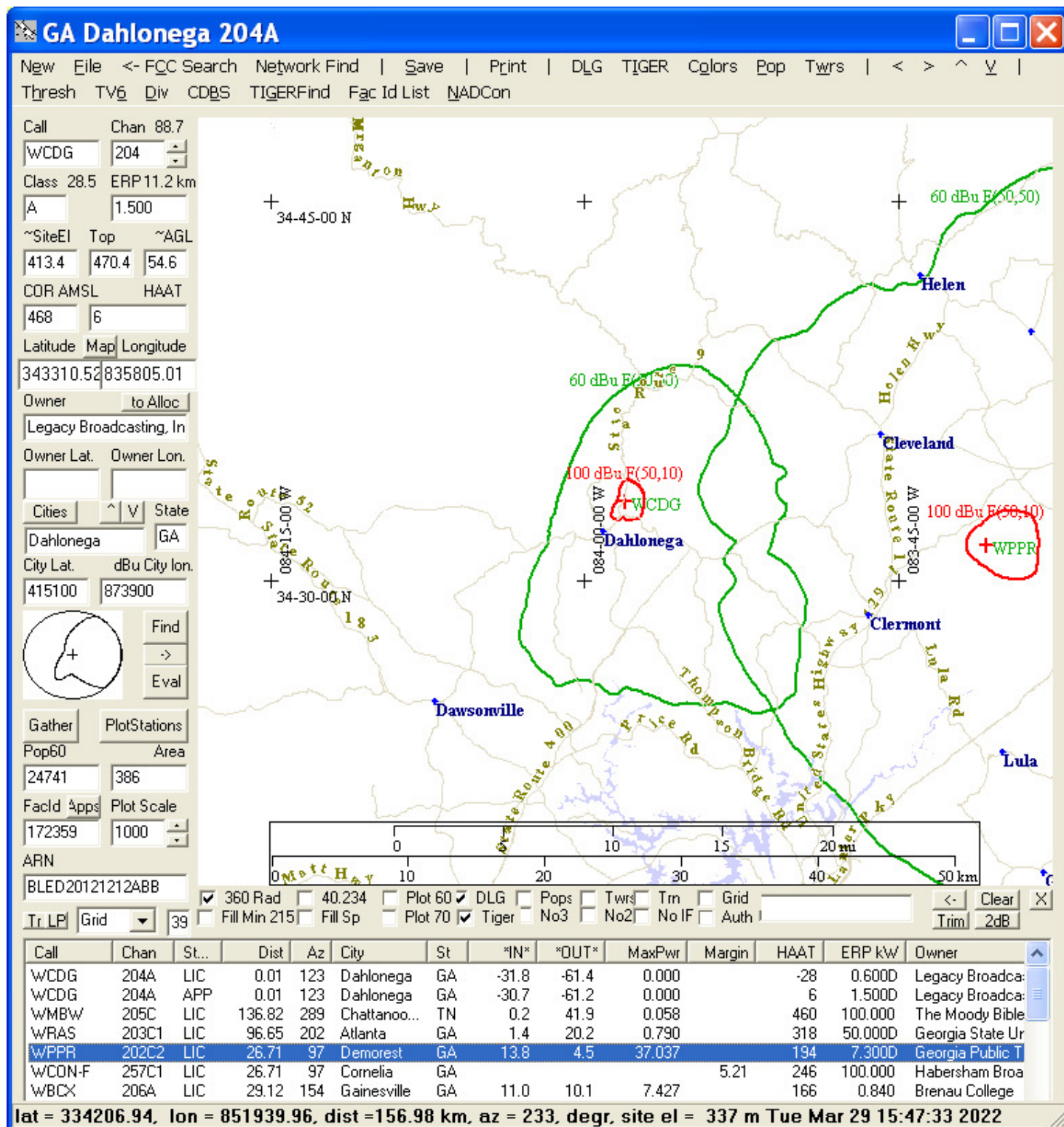
Channel = 203C1  
 Max ERP = 50 kW  
 RCAMSL = 596 m  
 N. Lat. 33 44 41.40  
 W. Lng. 84 21 35.70  
 Interfering  
 54 dBu

| Azimuth<br>(degrees) | ERP<br>(kW) | HAAT<br>(m) | Dist<br>(km) |  | Azimuth<br>(degrees) | ERP<br>(kW) | HAAT<br>(m) | Dist<br>(km) | Actual<br>(dBu) | IX<br>(km) |
|----------------------|-------------|-------------|--------------|--|----------------------|-------------|-------------|--------------|-----------------|------------|
| 140.0                | 001.5000    | 0084.2      | 018.8        |  | 032.5                | 021.4205    | 0311.7      | 089.5        | 52.52           |            |
| 141.0                | 001.4506    | 0085.2      | 018.8        |  | 032.4                | 021.4563    | 0311.8      | 089.2        | 52.63           |            |
| 142.0                | 001.4021    | 0087.5      | 018.9        |  | 032.4                | 021.4580    | 0311.8      | 088.9        | 52.74           |            |
| 143.0                | 001.3543    | 0089.7      | 019.0        |  | 032.3                | 021.4645    | 0311.8      | 088.5        | 52.85           |            |
| 144.0                | 001.3074    | 0090.9      | 018.9        |  | 032.2                | 021.5043    | 0311.9      | 088.2        | 52.95           |            |
| 145.0                | 001.2613    | 0091.2      | 018.8        |  | 032.1                | 021.5668    | 0312.1      | 088.0        | 53.05           |            |
| 146.0                | 001.2161    | 0091.6      | 018.6        |  | 031.9                | 021.6313    | 0312.2      | 087.7        | 53.15           |            |
| 147.0                | 001.1717    | 0092.3      | 018.5        |  | 031.8                | 021.6891    | 0312.3      | 087.5        | 53.24           |            |
| 148.0                | 001.1281    | 0092.5      | 018.4        |  | 031.6                | 021.7620    | 0312.5      | 087.3        | 53.33           |            |
| 149.0                | 001.0853    | 0091.5      | 018.1        |  | 031.3                | 021.8654    | 0312.6      | 087.1        | 53.40           |            |
| 150.0                | 001.0433    | 0089.8      | 017.7        |  | 031.0                | 021.9904    | 0312.8      | 087.0        | 53.47           |            |
| 151.0                | 001.0010    | 0087.7      | 017.3        |  | 030.6                | 022.1246    | 0313.0      | 087.0        | 53.52           |            |
| 152.0                | 000.9595    | 0086.3      | 016.9        |  | 030.3                | 022.2447    | 0313.2      | 086.9        | 53.57           |            |
| 153.0                | 000.9189    | 0086.0      | 016.7        |  | 030.1                | 022.3376    | 0313.4      | 086.8        | 53.63           |            |
| 154.0                | 000.8792    | 0086.7      | 016.5        |  | 029.9                | 022.3192    | 0313.5      | 086.6        | 53.68           |            |
| 155.0                | 000.8404    | 0088.1      | 016.5        |  | 029.8                | 022.2093    | 0313.6      | 086.4        | 53.73           |            |
| 156.0                | 000.8024    | 0089.7      | 016.5        |  | 029.7                | 022.1043    | 0313.7      | 086.2        | 53.78           |            |
| 157.0                | 000.7653    | 0091.0      | 016.4        |  | 029.5                | 021.9786    | 0313.8      | 086.0        | 53.82           |            |
| 158.0                | 000.7291    | 0091.9      | 016.2        |  | 029.3                | 021.8328    | 0313.9      | 085.9        | 53.84           |            |
| 159.0                | 000.6938    | 0092.4      | 016.1        |  | 029.1                | 021.6684    | 0314.0      | 085.8        | 53.85           |            |
| 160.0                | 000.6594    | 0092.9      | 015.9        |  | 028.9                | 021.5017    | 0314.2      | 085.7        | 53.85           |            |
| 161.0                | 000.6345    | 0093.4      | 015.8        |  | 028.7                | 021.3590    | 0314.3      | 085.5        | 53.86           |            |
| 162.0                | 000.6102    | 0093.6      | 015.6        |  | 028.5                | 021.2063    | 0314.4      | 085.4        | 53.87           |            |
| 163.0                | 000.5863    | 0094.3      | 015.5        |  | 028.3                | 021.0665    | 0314.5      | 085.3        | 53.88           |            |
| 164.0                | 000.5629    | 0095.6      | 015.4        |  | 028.2                | 020.9479    | 0314.6      | 085.2        | 53.91           |            |
| 165.0                | 000.5400    | 0097.7      | 015.5        |  | 028.1                | 020.8528    | 0314.6      | 085.0        | 53.95           |            |
| 166.0                | 000.5176    | 0099.3      | 015.4        |  | 027.9                | 020.7377    | 0314.7      | 084.8        | 53.98<--        |            |
| 167.0                | 000.4956    | 0099.5      | 015.3        |  | 027.7                | 020.5793    | 0314.8      | 084.7        | 53.97           |            |
| 168.0                | 000.4741    | 0099.2      | 015.1        |  | 027.5                | 020.4059    | 0314.8      | 084.7        | 53.94           |            |
| 169.0                | 000.4531    | 0099.4      | 014.9        |  | 027.3                | 020.2481    | 0314.9      | 084.7        | 53.92           |            |
| 170.0                | 000.4326    | 0099.2      | 014.7        |  | 027.0                | 020.0819    | 0315.0      | 084.7        | 53.88           |            |
| 171.0                | 000.4202    | 0098.7      | 014.5        |  | 026.8                | 019.9314    | 0315.1      | 084.7        | 53.86           |            |
| 172.0                | 000.4081    | 0098.2      | 014.4        |  | 026.6                | 019.7849    | 0315.1      | 084.6        | 53.84           |            |
| 173.0                | 000.3961    | 0098.4      | 014.3        |  | 026.5                | 019.6536    | 0315.3      | 084.6        | 53.84           |            |
| 174.0                | 000.3844    | 0098.8      | 014.2        |  | 026.3                | 019.5247    | 0315.4      | 084.5        | 53.84           |            |
| 175.0                | 000.3728    | 0098.1      | 014.1        |  | 026.1                | 019.3768    | 0315.5      | 084.5        | 53.81           |            |
| 176.0                | 000.3613    | 0097.9      | 013.9        |  | 025.9                | 019.2397    | 0315.7      | 084.5        | 53.79           |            |
| 177.0                | 000.3501    | 0098.1      | 013.8        |  | 025.7                | 019.1107    | 0315.9      | 084.5        | 53.77           |            |
| 178.0                | 000.3390    | 0098.5      | 013.8        |  | 025.6                | 018.9855    | 0316.0      | 084.4        | 53.77           |            |
| 179.0                | 000.3281    | 0098.9      | 013.7        |  | 025.4                | 018.8613    | 0316.2      | 084.4        | 53.75           |            |

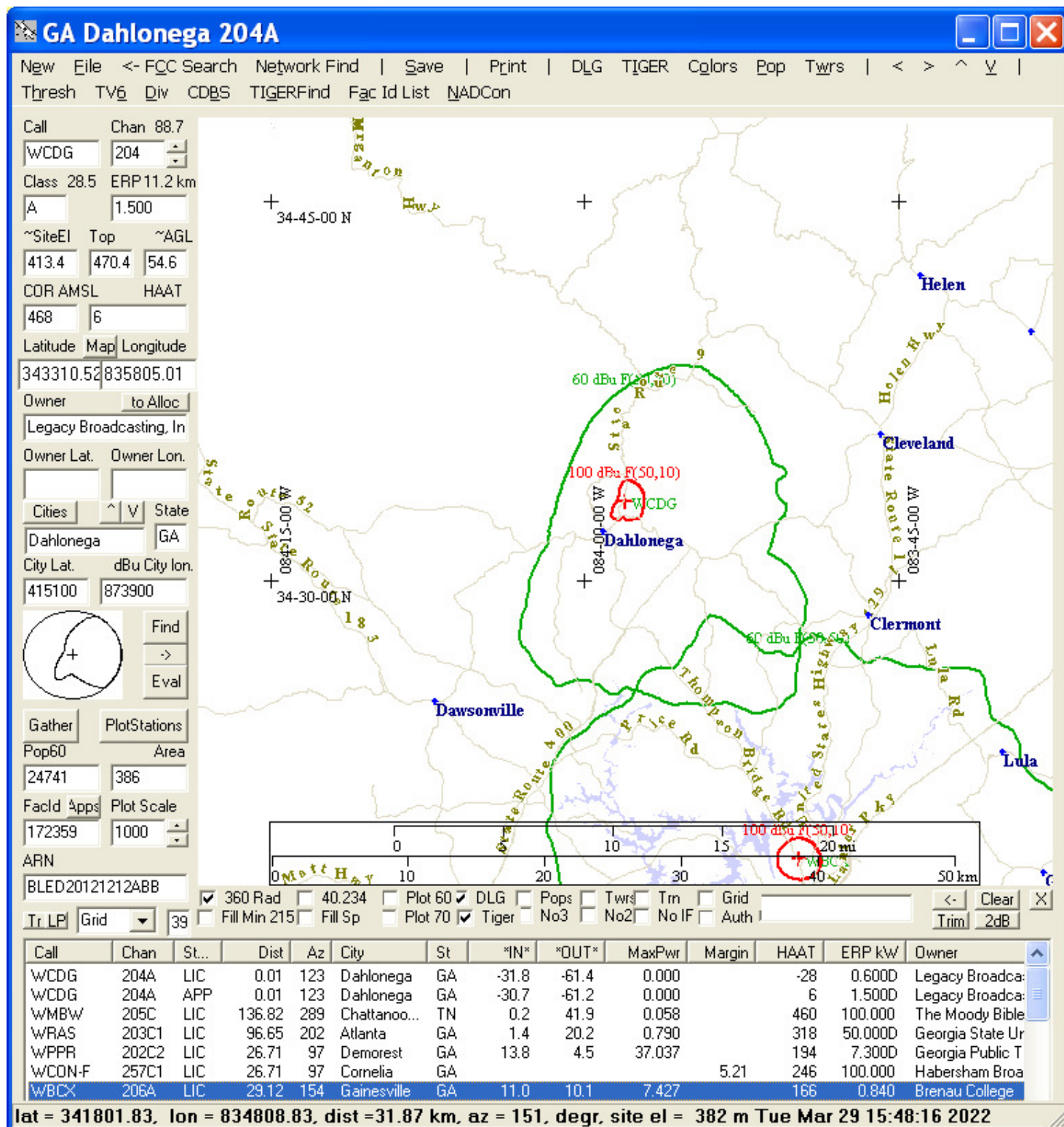
|             |          |        |       |  |       |          |        |       |          |
|-------------|----------|--------|-------|--|-------|----------|--------|-------|----------|
| 180.0       | 000.3174 | 0100.7 | 013.7 |  | 025.2 | 018.7560 | 0316.4 | 084.3 | 53.77    |
| 181.0       | 000.3204 | 0102.7 | 013.9 |  | 025.2 | 018.6839 | 0316.5 | 084.0 | 53.84    |
| 182.0       | 000.3235 | 0104.7 | 014.0 |  | 025.0 | 018.6074 | 0316.6 | 083.8 | 53.91    |
| 183.0       | 000.3266 | 0106.3 | 014.2 |  | 024.9 | 018.5234 | 0316.7 | 083.5 | 53.97    |
| 184.0       | 000.3297 | 0105.5 | 014.2 |  | 024.8 | 018.4045 | 0316.9 | 083.5 | 53.97<-- |
| 185.0       | 000.3328 | 0103.7 | 014.1 |  | 024.6 | 018.2750 | 0317.1 | 083.5 | 53.94    |
| 186.0       | 000.3359 | 0100.8 | 013.9 |  | 024.4 | 018.1340 | 0317.3 | 083.5 | 53.89    |
| 187.0       | 000.3390 | 0098.5 | 013.8 |  | 024.2 | 018.0010 | 0317.5 | 083.6 | 53.85    |
| 188.0       | 000.3422 | 0096.3 | 013.6 |  | 024.0 | 017.8717 | 0317.7 | 083.6 | 53.81    |
| 189.0       | 000.3453 | 0095.1 | 013.6 |  | 023.9 | 017.7531 | 0317.9 | 083.6 | 53.79    |
| 190.0       | 000.3485 | 0093.0 | 013.5 |  | 023.7 | 017.6275 | 0318.0 | 083.7 | 53.74    |
| 191.0       | 000.3659 | 0090.6 | 013.4 |  | 023.5 | 017.5157 | 0318.1 | 083.6 | 53.73    |
| 192.0       | 000.3838 | 0089.6 | 013.5 |  | 023.4 | 017.4128 | 0318.2 | 083.5 | 53.75    |
| 193.0       | 000.4020 | 0088.0 | 013.6 |  | 023.2 | 017.3047 | 0318.3 | 083.4 | 53.75    |
| 194.0       | 000.4207 | 0086.0 | 013.6 |  | 023.1 | 017.1922 | 0318.4 | 083.4 | 53.74    |
| 195.0       | 000.4398 | 0084.4 | 013.6 |  | 022.9 | 017.0817 | 0318.4 | 083.3 | 53.73    |
| 196.0       | 000.4594 | 0084.0 | 013.7 |  | 022.7 | 016.9764 | 0318.4 | 083.2 | 53.75    |
| 197.0       | 000.4793 | 0084.4 | 013.9 |  | 022.6 | 016.8715 | 0318.4 | 083.0 | 53.79    |
| 198.0       | 000.4997 | 0085.4 | 014.1 |  | 022.4 | 016.7654 | 0318.4 | 082.8 | 53.84    |
| 199.0       | 000.5206 | 0086.4 | 014.3 |  | 022.3 | 016.6552 | 0318.4 | 082.5 | 53.89    |
| 200.0       | 000.5418 | 0086.5 | 014.5 |  | 022.1 | 016.5393 | 0318.4 | 082.3 | 53.92<-- |
| 201.0       | 000.5519 | 0084.5 | 014.4 |  | 021.9 | 016.4182 | 0318.4 | 082.4 | 53.85    |
| 202.0       | 000.5622 | 0081.3 | 014.2 |  | 021.8 | 016.2995 | 0318.4 | 082.6 | 53.75    |
| 203.0       | 000.5725 | 0078.7 | 014.0 |  | 021.6 | 016.1849 | 0318.3 | 082.8 | 53.67    |
| 204.0       | 000.5829 | 0077.5 | 014.0 |  | 021.4 | 016.0716 | 0318.3 | 082.9 | 53.62    |
| 205.0       | 000.5935 | 0076.3 | 013.9 |  | 021.3 | 015.9595 | 0318.2 | 082.9 | 53.57    |
| 206.0       | 000.6041 | 0074.7 | 013.8 |  | 021.1 | 015.8502 | 0318.1 | 083.0 | 53.50    |
| 207.0       | 000.6148 | 0073.1 | 013.8 |  | 020.9 | 015.7430 | 0318.0 | 083.1 | 53.44    |
| 208.0       | 000.6256 | 0071.6 | 013.7 |  | 020.8 | 015.6376 | 0317.9 | 083.2 | 53.37    |
| 209.0       | 000.6365 | 0070.2 | 013.6 |  | 020.6 | 015.5338 | 0317.8 | 083.3 | 53.31    |
| 210.0       | 000.6475 | 0068.9 | 013.5 |  | 020.5 | 015.4315 | 0317.7 | 083.4 | 53.24    |
| 211.0       | 000.6238 | 0068.1 | 013.4 |  | 020.3 | 015.3411 | 0317.6 | 083.6 | 53.14    |
| 212.0       | 000.6007 | 0068.2 | 013.2 |  | 020.2 | 015.2482 | 0317.4 | 083.8 | 53.06    |
| 213.0       | 000.5779 | 0068.5 | 013.2 |  | 020.0 | 015.1563 | 0317.3 | 083.9 | 52.98    |
| 214.0       | 000.5556 | 0068.7 | 013.0 |  | 019.9 | 015.1173 | 0317.2 | 084.1 | 52.92    |
| 215.0       | 000.5337 | 0069.3 | 013.0 |  | 019.8 | 015.1053 | 0317.1 | 084.2 | 52.87    |
| 216.0       | 000.5123 | 0069.8 | 012.9 |  | 019.6 | 015.0935 | 0317.0 | 084.4 | 52.82    |
| 217.0       | 000.4913 | 0069.4 | 012.7 |  | 019.5 | 015.0836 | 0317.0 | 084.6 | 52.74    |
| 218.0       | 000.4707 | 0067.8 | 012.5 |  | 019.4 | 015.0757 | 0316.9 | 084.9 | 52.64    |
| 219.0       | 000.4506 | 0065.6 | 012.2 |  | 019.4 | 015.0694 | 0316.9 | 085.2 | 52.53    |
| 220.0       | 000.4309 | 0063.1 | 011.9 |  | 019.3 | 015.0643 | 0316.8 | 085.6 | 52.40    |
| ----- ----- |          |        |       |  |       |          |        |       |          |



# Prop vs WPPR



# Prop vs WBCX



## Radiation Hazard

There are no other broadcast facilities within 3 km..

**ID Stations V:2.1.17** (C) V-Soft Communications ...

**ID Stations**

**Search Parameters**

Store

N. Latitude: 343310.30

W. Longitude: 835804.59

Distance (km): 16

Date > yymmdd

**Station Type**

☒ AM Stations

☒ FM Stations

☒ TV Stations

**Include secondaries:**

☒ FM Translators

☒ TV Translators

Run Print Text Defaults

| Call   | Service | City      | State | Chan. | Power      | Coordinates           | Dist  | Bear  |
|--------|---------|-----------|-------|-------|------------|-----------------------|-------|-------|
| AM     | None    | Found     |       |       |            |                       |       |       |
| FM     |         |           |       |       |            |                       |       |       |
| WCDG   | M       | Dahlonega | GA    | 204A  | 0000.600kW | 343310.30N 835804.60W | 000.0 | 121.7 |
| 767745 | M       | Dahlonega | GA    | 212A  | 0003.200kW | 343452.40N 835736.90W | 003.2 | 013.0 |
| WNGU   | M       | Dahlonega | GA    | 208A  | 0000.750kW | 343129.30N 835949.70W | 004.1 | 220.3 |
| 762469 | M       | Cleveland | GA    | 212A  | 0001.700kW | 343643.00N 835803.40W | 006.6 | 000.4 |
| WAZXFM | M       | Cleveland | GA    | 270A  | 0000.350kW | 343032.30N 834826.60W | 015.5 | 108.3 |
| TV     | None    | Found     |       |       |            |                       |       |       |

**Adobe Acrobat Standard - [GA Dahlonega 204A RadHaz Worksheet.pdf]**

File Edit View Document Comments Tools Advanced Window Help

Create PDF Find: Previous Next

100% Help Text Edits

**Radiation Hazard Worksheet**

**GA Dahlonega 204A**

**From FCC 301/340 Worksheet**

COR above ground:  
54.6 m

ERP:  
V 1.500 kW  
H 1.5 kW

Results  
3.6% of Controlled Limit  
18.1% of Uncontrolled Limit

1 of 1

## Protected zones report

Protected zones report for WCDG on channel 204A 03-29-2022

Lat. 34 33 10.3 Lng. 83 58 04.6, ERP= 1.5 kw, HAAT= 6.4 m

-----

Facility is okay with respect to AM station towers.

Closest AM Facility is WRWH, CLEVELAND, GA, L, ND2 at 78.5° at a distance of 18.8 km

Facility is okay with respect to FCC monitoring stations.

Closest FCC Monitoring Station is 103.5 km= Powder Springs, GA

Facility is okay toward West Virginia Quiet Zone. Distance to center = 583.3 km

Facility is okay toward Table Mountain. Distance to Center = 1984.1 km, Azimuth = 294.6 Degrees True