

NCE FAIR DISTRIBUTION EXHIBIT

NEW 202C3

Two Harbors, MN

Two Harbors Community Radio

POPULATION SERVED

The proposed NCE facility will encompass 1,799 sq. km. total land-only area. There is a total of 9,387 people (2010 Census).

FAIR DISTRIBUTION OF SERVICE ANALYSIS.

As shown in Exhibit C, This facility will provide first NCE service to 2,982 people (31.7% of the total) and second NCE Service to 6,431 people (68.3% of the total). This facility will, therefore, receive first and second local service preference. Exhibit D Demonstrates that the proposed facility will provide first aural reception service for 526sq. km, and 190 people.

EXHIBIT A- Fair Distribution of Service

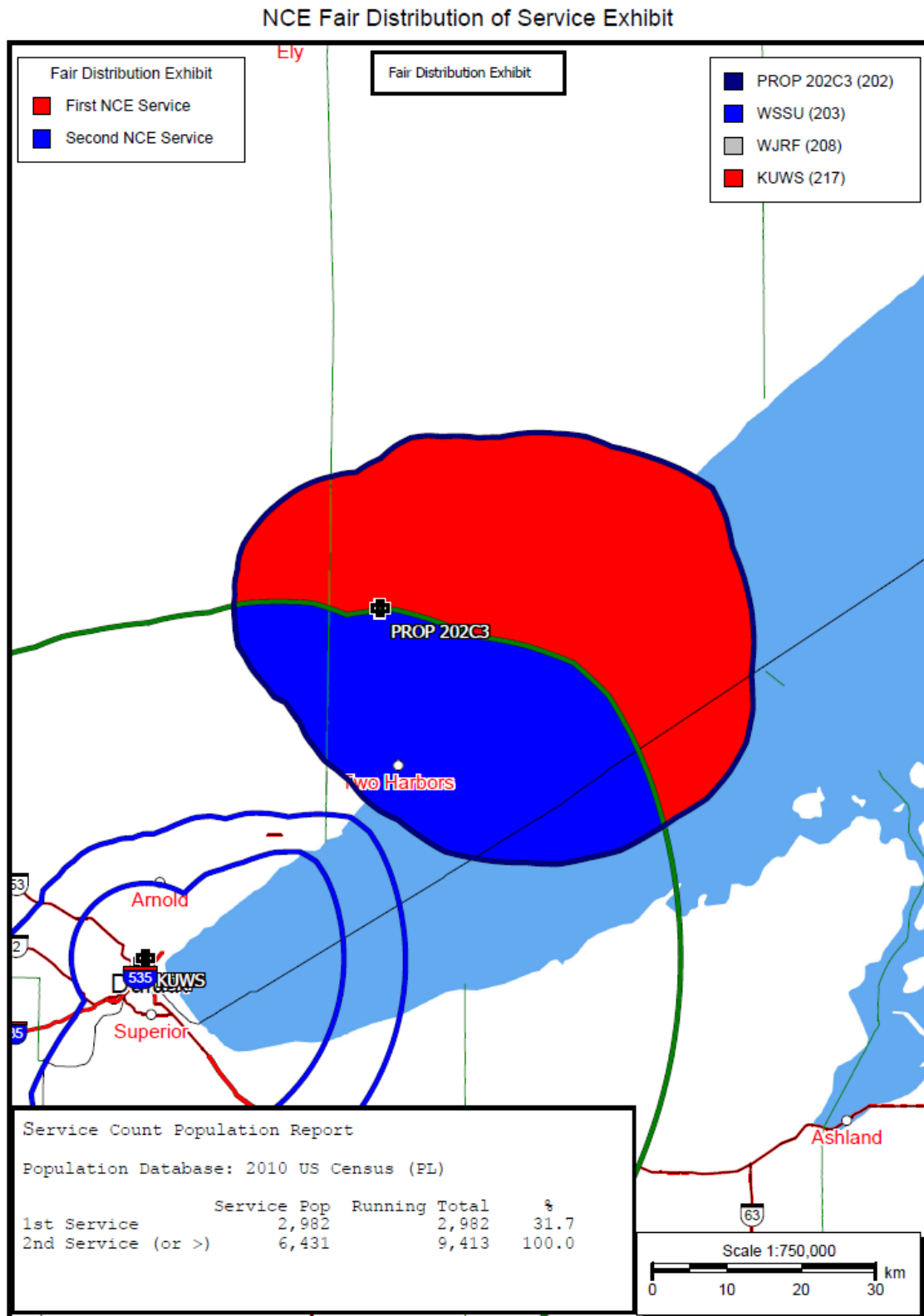


EXHIBIT B- First Aural Service ("White Area")

