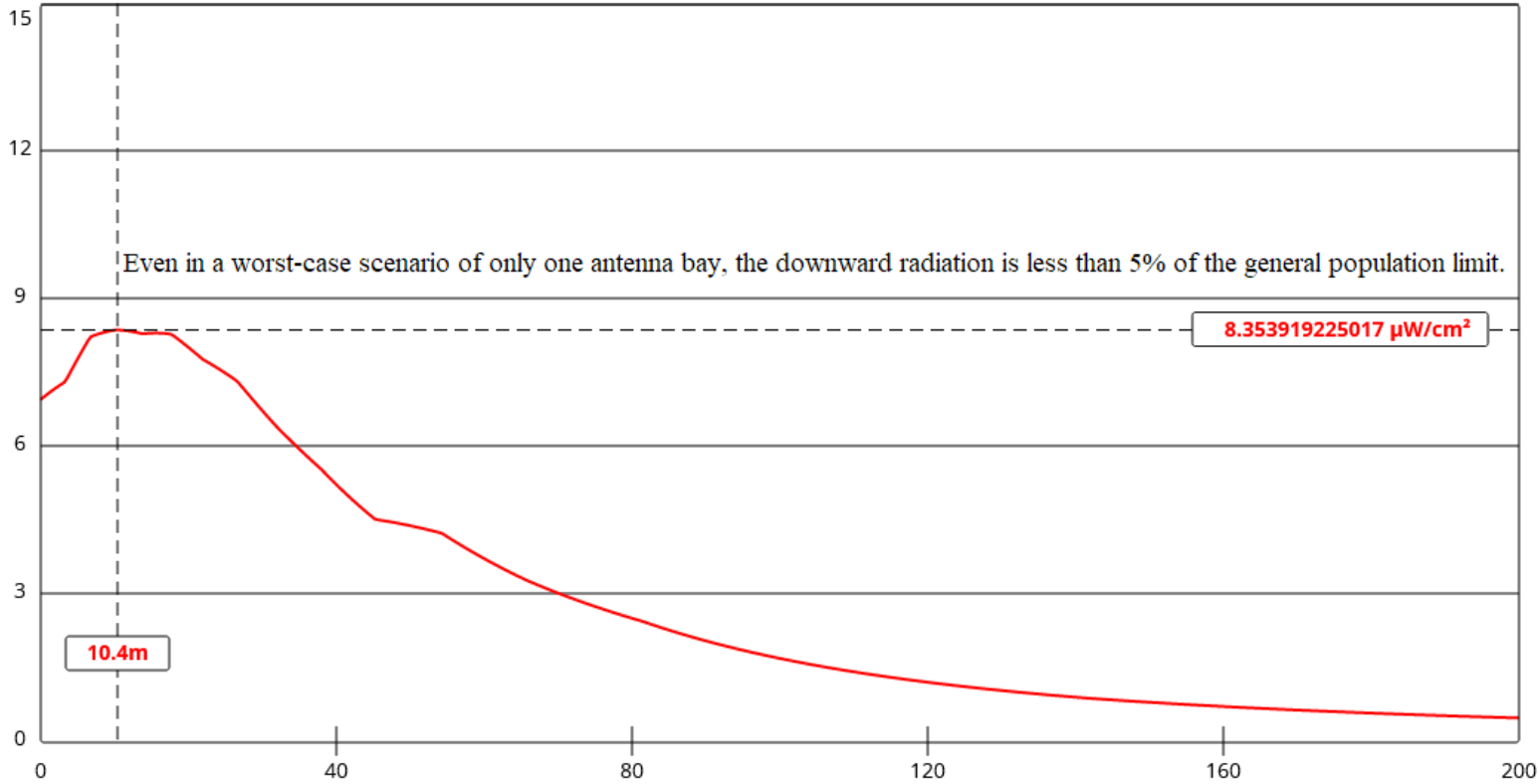


JavaScript enabled web browser. The FM Model is originally based on measured data published in 1985 by the EPA.

▼ Show More....



View Tabular Results +

Channel Selection	Channel 214 (90.7 MHz) ▼		
Antenna Type +	EPA Type 1: Ring-and-Stub or "Other" ▼		
Height (m)	<input type="text" value="40"/>	Distance (m)	<input type="text" value="200"/>
ERP-H (W)	<input type="text" value="300"/>	ERP-V (W)	<input type="text" value="300"/>
Num of Elements	<input type="text" value="1"/>	Element Spacing (λ)	<input type="text" value="1"/>
Num of Points	<input type="text" value="500"/>	<input type="button" value="Apply"/>	