

LPFM Channel Finder Results

Sun Sep 12 23:38:59 2021

Input options:

EXCLUDES second-adjacent channel spacings

Latitude, Longitude: 47° 37' 20", 116 59' 19"

All FM channels 201 to 300 are considered below.

Google Earth Map: [5.6 km radius \(approximate 60 dBu service contour coverage\)](#)

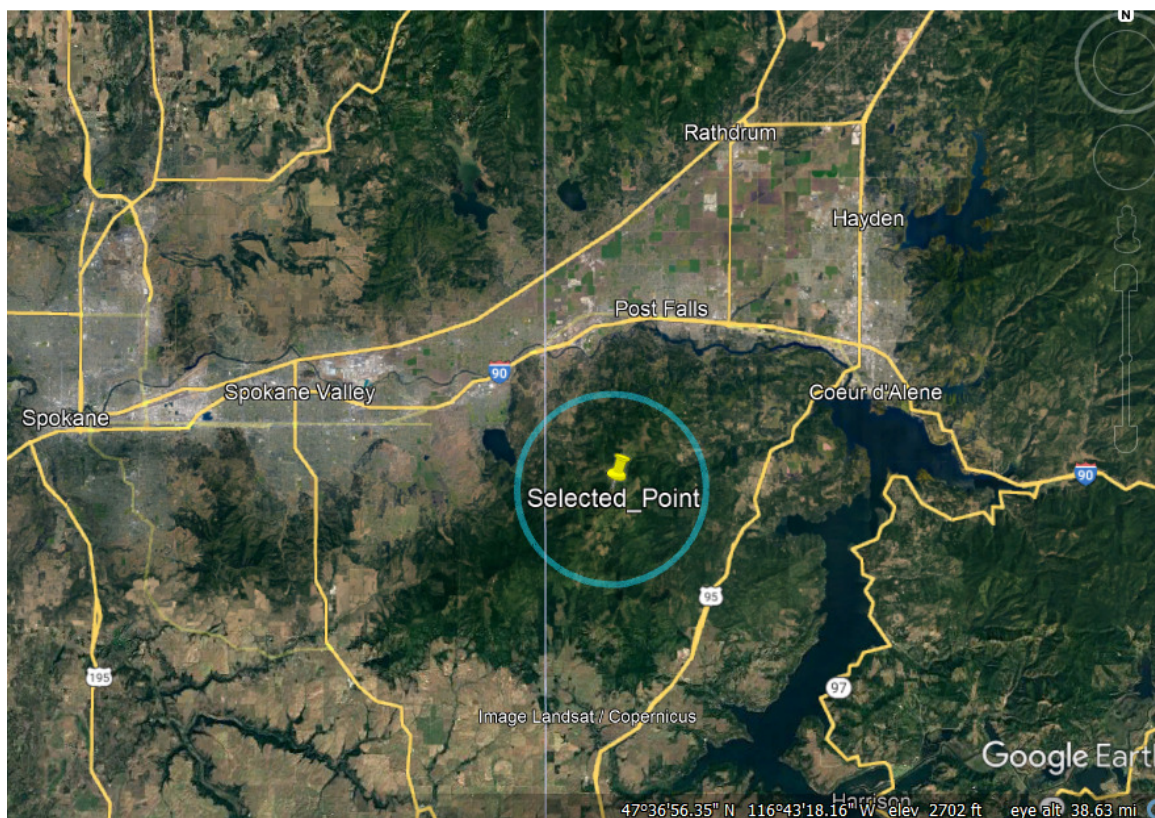


CONDITIONAL. The requested latitude and longitude meet the LPFM spacing requirements for one or more second adjacent channels. See [Section 73.807\(e\)](#).

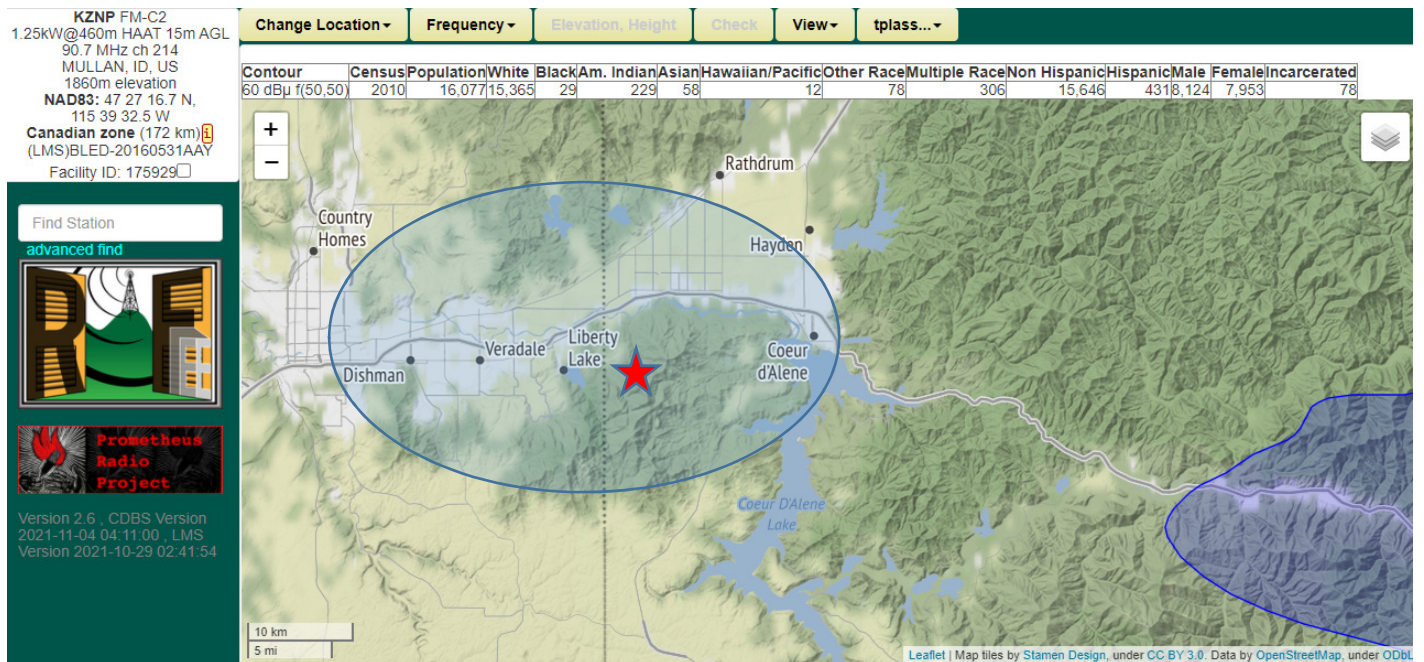
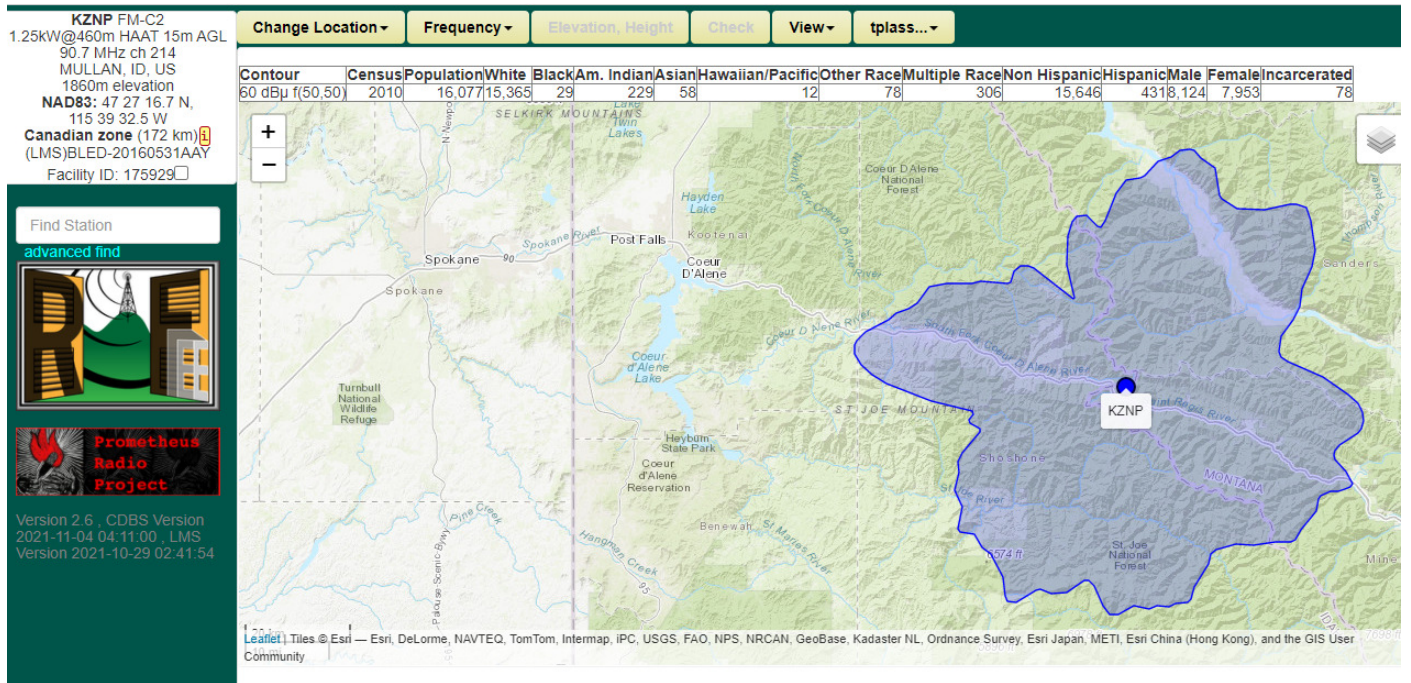
Channels Available for LPFM LP100 Stations [Channels 201 to 300, [corresponding to 88.1 to 107.9 MHz](#)]

Channel 214	----	90.7 MHz
Channel 227	----	93.3 MHz
Channel 243	----	96.5 MHz
Channel 248	----	97.5 MHz
Channel 249	----	97.7 MHz
Channel 253	----	98.5 MHz
Channel 263	----	100.5 MHz
Channel 274	----	102.7 MHz

This analysis does not determine whether an LPFM station at this location and channel might receive interference within its 60 dBu LPFM service contour from FM broadcast stations already operating or authorized in the band from fully spaced locations. LPFM stations must accept all such interference.



Google Earth Map: [5.6 km radius \(approximate 60 dBu service contour coverage\)](#)



Proposed site shown with red star with much lower than 60 dBu coverage area shown in light blue. Existing KZNP nearest 60 dBu pattern shown in purple to the east, with significant mountainous/low population area in separation.