

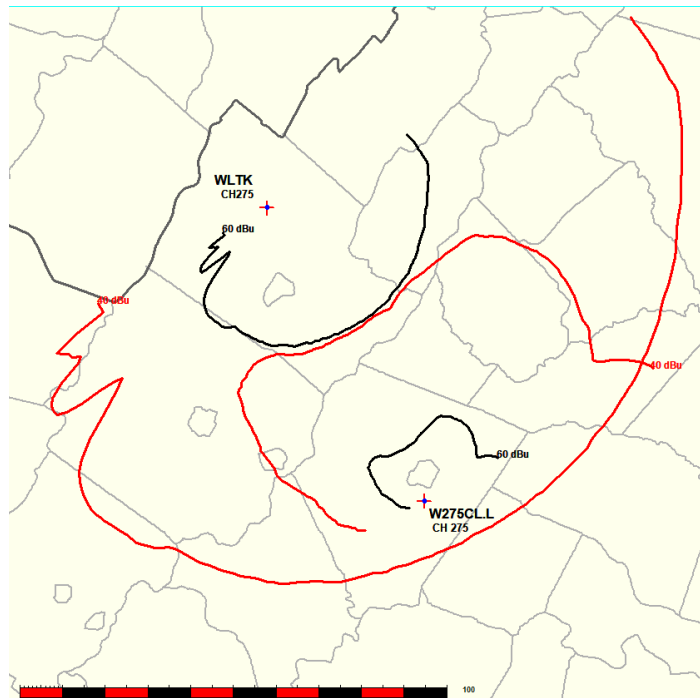
# 47 C.F.R. Section 74.1233(a)(1) "Showing of Reduced Interference"

## Present Operation W275CL.L - Charlottesville, VA

Pursuant to 47 C.F.R. Section 74.1233(a)(1)(i)(A)(2), this showing of reduced interference to or from any other broadcast station as a remedial change to a same-band frequency has been demonstrated for W275CL.L - Charlottesville, VA (Facility ID: 141162). *Given the presence of 47 C.F.R. Section 74.1204(d) Second and Third Adjacent Channel Given Interference Waiver Requests, this showing has been made solely with regard to incoming (received) interference contour clearance to the nearest co-channel or first adjacent channel protection.* The present W275CL.L operation results in -28.7 km of predicted contour overlap toward its nearest and most severe co-channel allocation protection (see attached **Present Operation Study**). The proposed CH296D.P operation results in -5.6 km of predicted contour overlap toward its nearest and most severe co-channel allocation protection (see attached **Proposed Operation Study**). As a result, the potential for predicted interference will be reduced for this remedial same-band frequency change.

| Tidewater Communications, LLC |        |  |     |       |                  |             |          |          |                            |                 |       |
|-------------------------------|--------|--|-----|-------|------------------|-------------|----------|----------|----------------------------|-----------------|-------|
| REFERENCE                     | CH#    | 275D - 102.9 MHz, Pwr= 0.12 kW DA, HAAT= 0.0 M, COR= 475 M |     |       |                  |             |          |          | DISPLAY DATES              |                 |       |
| 37 59 06.50 N.                |        | Average Protected F(50-50)= 5.9 km                         |     |       |                  |             |          |          | DATA 10-14-21              |                 |       |
| 78 28 47.00 W.                |        | Standard Directional                                       |     |       |                  |             |          |          | SEARCH 10-14-21            |                 |       |
| CH                            | CALL   | TYPE   | ANT | AZI   | DIST             | LAT         | PWR (kW) | INT (km) | PRO (km)                   | *IN*            | *OUT* |
| CITY                          |        | STATE  |     | <--   | FILE #           | LNG         | HAAT (M) | COR (M)  | LICENSEE                   | (Overlap in km) |       |
| 275D                          | W275CL | LIC DCN  |     | 0.0   | 0.00             | 37 59 06.50 | 0.120    |          | ---                        | Reference---    |       |
| Charlottesville               |        | VA   |     | 0.0   | BLFT20170630AAT  | 78 28 47.00 |          | 475      | Tidewater Communications,  |                 |       |
| 274C1                         | WJXX   | RSV-A  | N   | 201.0 | 77.74            | 37 19 55.52 | 100.000  | 103.8    | 70.8                       | -29.4*          | 1.7   |
| Appomattox                    |        | VA   |     | 20.9  |                  | 78 47 44.03 | 299      | 511      |                            |                 |       |
| 275A                          | WLTK   | LIC_CN   |     | 332.1 | 78.49            | 38 36 30.40 | 2.050    | 92.5     | 34.1                       | -28.7*          | 0.7   |
| New Market                    |        | VA   |     | 151.9 | BMLED20170103ABU | 78 54 08.00 | 169      | 670      | Educational Media Foundati |                 |       |
| 274B                          | WJXX   | LIC_CN   |     | 219.1 | 73.80            | 37 28 07.50 | 22.000   | 78.9     | 65.6                       | -7.5*           | 0.0   |
| Appomattox                    |        | VA   |     | 38.8  | BLH19890602KC    | 79 00 26.00 | 227      | 439      | Ihm Licenses, LLC          |                 |       |
| 276A                          | WJMA   | LIC ZCN  |     | 37.5  | 70.13            | 38 29 04.50 | 6.000    | 37.7     | 24.4                       | 12.6            | 17.4  |
| Culpeper                      |        | VA   |     | 217.8 | BLH20090826AAF   | 77 59 21.00 | 86       | 210      | Piedmont Communications, I |                 |       |
| 275D                          | W275BQ | LIC_CN   |     | 106.8 | 90.39            | 37 44 46.50 | 0.250    | 38.2     | 11.2                       | 31.3            | 13.0  |
| Ashland                       |        | VA   |     | 287.4 | BLFT20110525AAL  | 77 29 42.90 | 97       | 150      | Stu-Comm, Inc.             |                 |       |

Terrain database is NED 03 SEC , R= 73.215 qualifying spacings or FCC minimum Spacings in KM, M= Margin in KM  
In & Out distances between contours are shown at closest points. Reference zone= East Zone, Co to 1st adjacent.  
All separation margins (if shown) include rounding.  
Ant Column: (D= DA Standard, Z= DA 73.215, N= Not DA 73.215, \_= Omni), Polarization (C,H,V,E), Beamtilt(Y,N,X)  
"\*"affixed to 'IN' or 'OUT' values = site inside restricted contour.



# 47 C.F.R. Section 74.1233(a)(1) "Showing of Reduced Interference"

## Proposed Operation CH296D.P - Charlottesville, VA

Pursuant to 47 C.F.R. Section 74.1233(a)(1)(i)(A)(2), this showing of reduced interference to or from any other broadcast station as a remedial change to a same-band frequency has been demonstrated for W275CL.L - Charlottesville, VA (Facility ID: 141162). *Given the presence of 47 C.F.R. Section 74.1204(d) Second and Third Adjacent Channel Given Interference Waiver Requests, this showing has been made solely with regard to incoming (received) interference contour clearance to the nearest co-channel or first adjacent channel protection.* The present W275CL.L operation results in -28.7 km of predicted contour overlap toward its nearest and most severe co-channel allocation protection (see attached **Present Operation Study**). The proposed CH296D.P operation results in -5.6 km of predicted contour overlap toward its nearest and most severe co-channel allocation protection (see attached **Proposed Operation Study**). As a result, the potential for predicted interference will be reduced for this remedial same-band frequency change.

|                               |         |  |     |       |                  |             |          |          |                            |                 |       |
|-------------------------------|---------|--|-----|-------|------------------|-------------|----------|----------|----------------------------|-----------------|-------|
| Tidewater Communications, Llc |         |  |     |       |                  |             |          |          |                            |                 |       |
| REFERENCE                     | CH#     | 296D - 107.1 MHz, Pwr= 0.25 kW DA, HAAT= 320.1 M, COR= 474.7 M |     |       |                  |             |          |          | DISPLAY DATES              |                 |       |
| 37 59 06.40 N.                |         | Average Protected F(50-50)= 23.28 km                           |     |       |                  |             |          |          | DATA 10-14-21              |                 |       |
| 78 28 47.40 W.                |         | Standard Directional   |     |       |                  |             |          |          | SEARCH 10-14-21            |                 |       |
|                               |         |  |     |       |                  |             |          |          |                            |                 |       |
| CH                            | CALL    | TYPE   | ANT | AZI   | DIST             | LAT         | PWR (kW) | INT (km) | PRO (km)                   | *IN*            | *OUT* |
| CITY                          |         | STATE  |     | <--   | FILE #           | LNG         | HAAT (M) | COR (M)  | LICENSEE                   | (Overlap in km) |       |
| 296A                          | WTTX-FM | LIC_CN   |     | 204.7 | 74.96            | 37 22 19.50 | 1.700    | 72.1     | 23.6                       | -5.6            | 27.0  |
| Appomattox                    |         | VA   |     | 24.5  | BMLED20060112AEE | 78 50 05.00 | 130      | 341      | Positive                   | Alternative     | Radio |
| 296A                          | WHFV    | LIC NCN  |     | 345.6 | 58.73            | 38 29 48.30 | 0.330    | 37.0     | 10.8                       | 2.3             | 0.6   |
| Shenandoah                    |         | VA   |     | 165.5 | BLED20141031AAS  | 78 38 51.10 | -65      | 393      | Holy Family Communications |                 |       |
| 296A                          | WCHG    | LIC_CN   |     | 273.0 | 114.08           | 38 01 53.40 | 0.160    | 85.3     | 28.5                       | 22.0            | 64.1  |
| Hot Springs                   |         | VA   |     | 92.2  | BMLED20110527AAF | 79 46 51.10 | 429      | 1076     | Pocahontas Communications  |                 |       |
| 297A                          | WBBT-FM | LIC NCN  |     | 127.8 | 86.66            | 37 30 16.50 | 1.400    | 42.8     | 28.0                       | 23.1            | 29.0  |
| Powhatan                      |         | VA   |     | 308.3 | BMLED20180102AAL | 77 42 13.00 | 207      | 282      | Vpm Media Corporation      |                 |       |
| 295D                          | W295CP  | LIC DCN  |     | 324.3 | 64.04            | 38 27 08.40 | 0.250    | 23.8     | 16.7                       | 24.3            | 30.6  |
| Harrisonburg                  |         | VA   |     | 144.1 | 0000116935       | 78 54 31.10 |          | 561      | Tidewater Communications,  |                 |       |
| 297B                          | WLVW    | LIC_CN   |     | 48.2  | 162.41           | 38 57 01.40 | 19.500   | 75.7     | 64.0                       | 63.6            | 53.7  |
| Washington                    |         | DC   |     | 229.1 | BMLED20190214AAS | 77 04 45.90 | 246      | 320      | Educational Media Foundati |                 |       |

Terrain database is NED 03 SEC , R= 73.215 qualifying spacings or FCC minimum Spacings in KM, M= Margin in KM  
In & Out distances between contours are shown at closest points. Reference zone= East Zone, Co to 1st adjacent.  
All separation margins (if shown) include rounding.  
Ant Column: (D= DA Standard, Z= DA 73.215, N= Not DA 73.215, \_= Omni), Polarization (C,H,V,E), Beamtilt(Y,N,X)

