

**Robert H. Branch, Jr.**

440 Astillero Street  
Las Vegas, NV 89138  
434-941-9123

---

VCY America, Inc.  
New Auction 109 Long Form Application  
Class A, Channel 280, Dunkerton, IA  
42-42-23.8 N, 92-13-4.3 W – ERP = 6.0 KW – RCAMSL = 406.3 Meters

---

The applicant is the winning bidder in Auction 109 for the commercial FM broadcast allocation on Channel 280 in Dunkerton, Iowa.

**Allocation Considerations**

The facility specifies a fully-spaced facility pursuant to 47 CFR Sections 73.203, 73.207, 73.213, 73.315, 73.509, 73.525 and 73.1125. Attached is an allocation study showing the relevant spacings and clearances in compliance with these sections. Below are the results of the frequency allocation spacing study.

ComStudy 2.2 search Channel 280 (Class A) at (NAD 83) 42-42-23.8 N, 92-13-04.3 W.

<b>STATION CALL</b>	<b>LICENSE CITY</b>	<b>STATE</b>	<b>CHN</b>	<b>CLASS</b>	<b>ACT DIST</b>	<b>REQ SEP</b>	<b>GEO BRNG</b>	<b>CLEARANCE</b>
K226CK	WATERLOO	IA	226	D	31.72	0.00	204.0	31.7
KDAT	CEDAR RAPIDS	IA	283	C1	81.72	75.00	148.2	6.7
KDOC-FM	EYOTA	MN	280	A	148.16	115.00	360.0	33.2
KLKK	CLEAR LAKE	IA	279	C3	92.01	89.00	300.4	3.0
KNEI-FM	WAUKON	IA	278	C2	91.24	55.00	42.6	36.2
KOEZ	AMES	IA	281	C0	165.29	152.00	237.8	13.3
KOEZ	AMES	IA	281	C1	165.30	133.00	237.8	32.3
WLLR-FM	DAVENPORT	IA	279	C0	187.94	152.00	133.3	35.9
WTPN	WESTBY	WI	280	A	147.24	115.00	46.6	32.2

**Community of License Coverage**

The applicant's specified facility f(50,50) 70 dBu (using the 8 cardinal radials – with linear interpolation) covers greater than 95 percent of the population of the community of license of Dunkerton, IA. Attached is a map demonstrating this. The Census 2020 population of Dunkerton, Iowa is 852 persons. Attached is an additional map showing the 6 structures (that are assumed to be households) that are outside of the city grade contour. Assuming a

population of 6 persons per household times the number of excluded residential structures of 6, the population not covered by the f(50,50) 70 dBu contour is 4.2 percent of the total population of 852. The methodology behind this is the overlay of the f(50,50) 70 dBu contour (using the 8 cardinal radials – with linear interpolation) superimposed on a Google Earth map using the most recent aerial photograph data. With respect to balance of the community of license land area not covered by the f(50,50) 70 dBu City Grade contour, with the exception of the 6 identified and excluded structures that are assumed to be households, the entire balance is unpopulated, which can clearly be seen from the aerial photograph.

#### Height Above Average Terrain

Using the FCC Online Computer Program HAAT, using the proposed geographic coordinates, radiation center and the eight cardinal radials, the Height Above Average Terrain for the proposed antenna is 100 meters.

The 8 cardinal-radial data results are below:

0°	95.0 m
45°	88.3 m
90°	94.6 m
135°	109.8 m
180°	109.1 m
225°	110.9 m
270°	105.6 m
315°	87.9 m

#### Distance to f(50,50) 70 dBu Linear-Interpolated Contour for the 8 Cardinal Radials

Site: Proposed  
Coordinates: (NAD83) 42-42-23.8 N, 92-13-04.3 W  
Freq: 103.90000 MHz  
ERP: 6.00 kW

Bearing	ERP-kW	HAAT	DH	Distance	Lat	Lon
0	6.00	95	50	15.68	42.847680	-92.217694
45	6.00	89	40	15.67	42.847551	-92.214340
90	6.00	94	30	15.66	42.847370	-92.210991
135	6.00	108	40	15.64	42.847145	-92.207651
180	6.00	106	50	15.63	42.846879	-92.204319
225	6.00	110	30	15.62	42.846569	-92.200997
270	6.00	103	10	15.60	42.846217	-92.197685
315	6.00	87	20	15.59	42.845823	-92.194385

## Environmental Statement

The application has proposed to co-locate on and existing, established communications tower facility. The proposed facility is the only continuously transmitting facility on the tower, with the exception of cellular and microwave facilities which cannot be accurately studied per this report. Using the FCC computer program, FM Model and using a proposed antenna of ERI LP-1E antenna (Opposed U) antenna type, with 6 KW ERP (Horizontal and Vertical) at a height above ground level of 93 meters, the maximum RF radiation level reaching 2 meters above ground is 10.77 microwatts per centimeter squared. This 1.07 percent of the occupational limit and 3.59 percent of the general public limit specified in OET Bulletin 65.

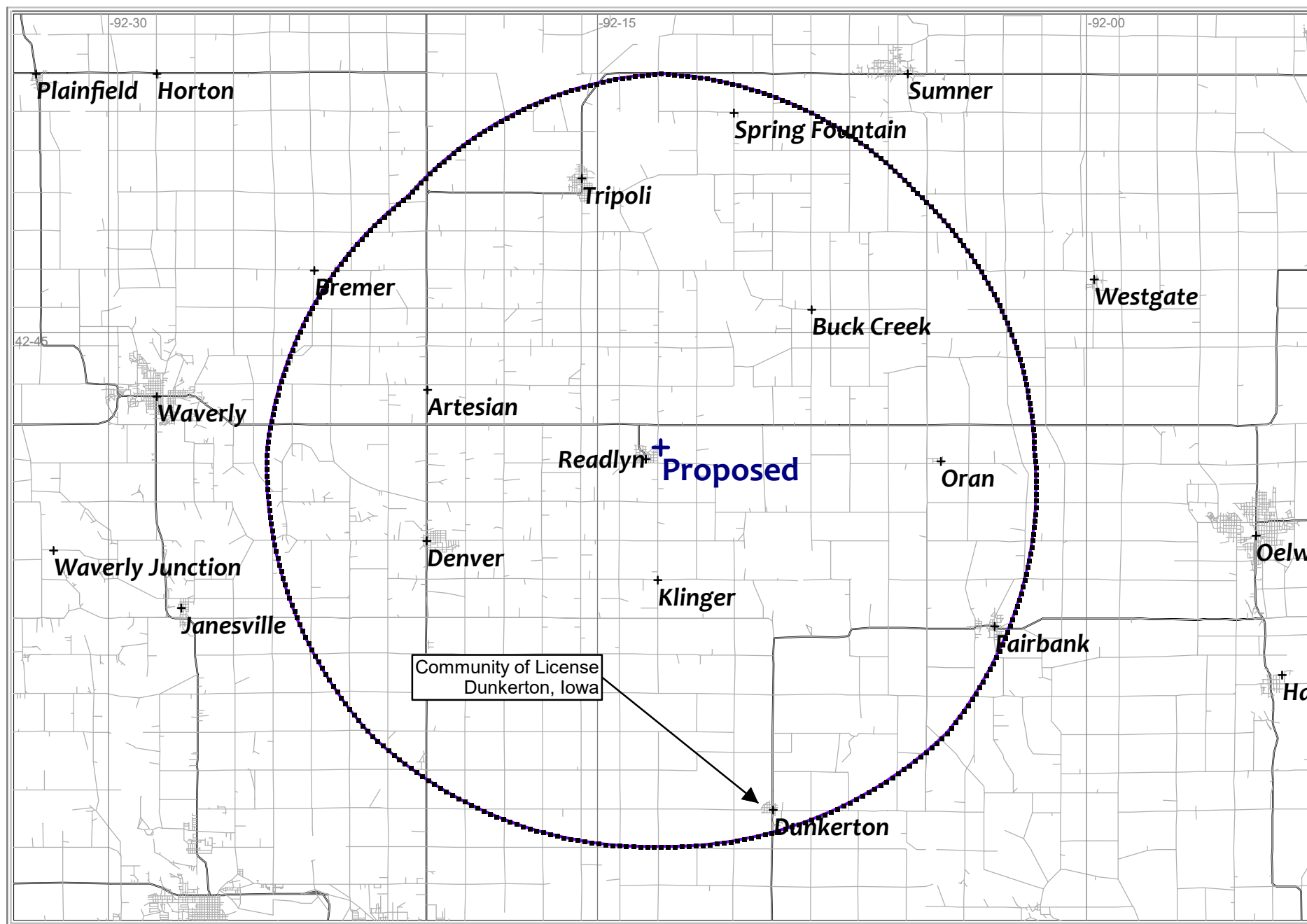
- End of Report -

### Attachments:

Community of License Coverage Map

Aerial Photograph Showing Community Coverage

Aerial Photograph Showing Excluded Population Coverage (Detail)





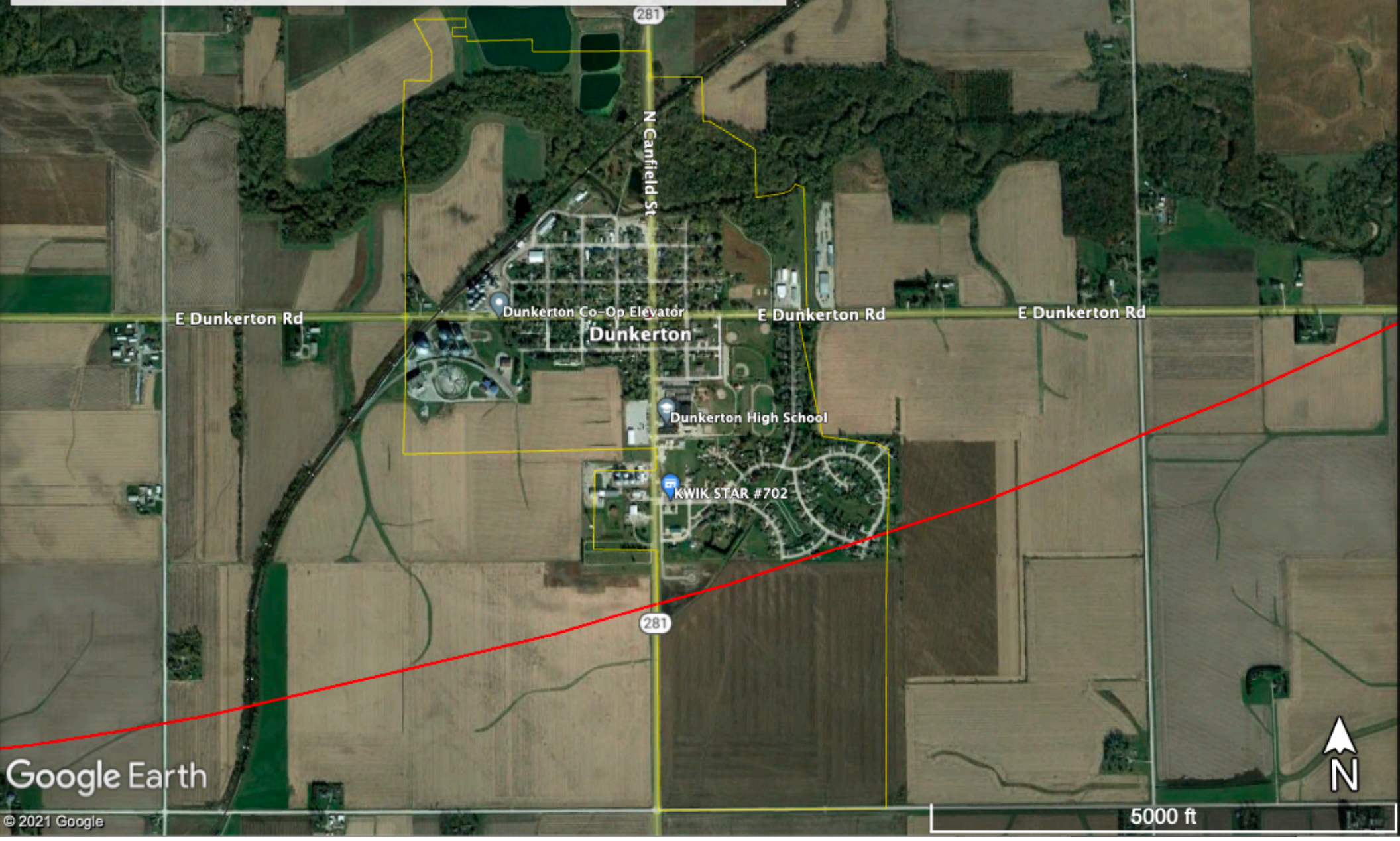
# Community of License Coverage Exhibit (Detail)

VCY America, Inc. - New, Ch 280, Dunkerton, IA  
f(50,50) 70 dBu Contour (in Red) - 8 Radials Interpolated  
Overlay with Dunkerton, IA Corporate Limits (In Thin Yellow)

Area outside of City Grade contour contains 6 residential buildings  
in the community of license as can be seen in this detailed aerial photograph.  
All other Community of License areas south of contour are unpopulated.

## Legend

- Dunkerton
- Dunkerton IA 70 dBu Interpolated 8 radials





# Community of License Coverage Exhibit (Detail)

VCY America, Inc. - New, Ch 280, Dunkerton, IA  
f(50,50) 70 dBu Contour (in Red) - 8 Radials Interpolated  
Overlay with Dunkerton, IA Corporate Limits (In Thin Yellow)

Area outside of City Grade contour contains 6 residential buildings  
in the community of license as can be seen in this detailed aerial photograph.

## Legend

- Dunkerton
- Dunkerton IA 70 dBu Interpolated 8 radials

