

307(b) SHOWING

KAZK(FM) CATALINA, ARIZONA, CH. 209C2

KAZK(FM) seeks to change its city of license from Willcox, Arizona to Catalina, Arizona. To effectuate this change, KAZK(FM) seeks to relocate to a new transmitter location and upgrade from channel 209A to channel 209C2. This change will serve the public interest since Catalina, Arizona is currently without any AM, FM or TV stations licensed to the community, making this Catalina's first local broadcast service. The currently city of license, Willcox, Arizona, will continue to receive service from KHIL(AM) Willcox, Arizona, facility ID 72656, non-commercial FM station KWQR(FM) Willcox, Arizona, facility ID 184846, and KWCX-FM Willcox, Arizona, facility ID 72659.

Catalina, Arizona is an un-incorporated Census Designated Place ("CDP") with a 2010 census population of 7,025 persons. It is located in Pima County, which has a population of 181,924 persons. While yet to be incorporated, it has many community organization including two public libraries, recreation center, a K through 8 school, fire department, several churches and many community businesses. Figure 1 is an informational page from Wikipedia with more information about the community. Figure 2 shows photographs of the various community organizations and businesses. Catalina is certainly a well established community deserving of a new first broadcast service.

The Public Interest will also be served by this proposed new operation of KAZK(FM) at Catalina, AZ since the proposed 60 dBμ service area will cover 181,924 persons and 4,479 square kilometers. This is a dramatic increase from the current 60 dBμ coverage of just 6,283 persons and 622 square kilometers.

The proposed operation will not more than 50% cover any urbanized area as defined by "Rural Radio" policy. It will not be able to ever cover more than 50% of the Tucson Urbanized area because of the signal limitations towards Mexican allotments.

Figure 3 shows the current services map for KAZK(FM) at Willcox. There are currently 9 primary services that intersect with KAZK(FM)'s primary service.

Figure 4 shows the proposed services map for KAZK(FM) at Catalina. There are currently 25 FM's and 210 AM's in this service area.

Based on this information, the Public would be better served by this relocation of KAZK(FM) to Catalina, Arizona on channel 209C2.

Catalina, Arizona

Catalina is a census-designated place (CDP) in Pima County, Arizona, United States. The population was 7,025 at the 2000 census. Catalina continues to experience increasing population growth, while attempting to maintain its rural character. Catalina remains an unincorporated community, with no plans for annexation into any nearby towns.

Contents

- Geography
- Demographics
- History
- Governmental representation
- References
- External links

Geography

Catalina is located at 32°29′28″N 110°54′28″W﻿ (32.491151, -110.907652).^[3]

According to the United States Census Bureau, the CDP has a total area of 13.9 square miles (36 km²), all land.

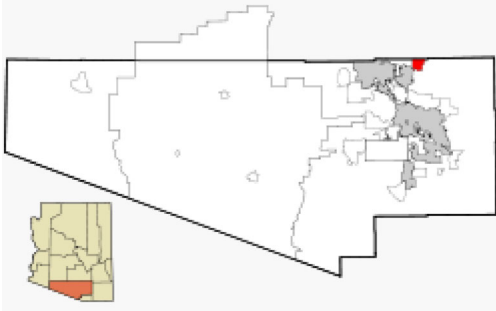
Demographics

As of the census^[5] of 2000, there were 7,025 people, 2,567 households, and 1,899 families residing in the CDP. The population density was 506.6 people per square mile (195.6/km²). There were 2,755 housing units at an average density of 198.7/sq mi (76.7/km²). The racial makeup of the CDP was 85.2% White, 0.5% Black or African American, 1.4% Native American, 0.4% Asian, 0.2% Pacific Islander, 9.7% from other races, and 2.6% from two or more races. 23.7% of the population were Hispanic or Latino of any race.

There were 2,567 households, out of which 33.5% had children under the age of 18 living with them, 58.2% were married couples living together, 10.3% had a female householder with no husband present, and 26.0%

Catalina, Arizona

CDP



Location in Pima County and the state of Arizona

Coordinates: 32°29′28″N 110°54′28″W

Country	<u>United States</u>
State	<u>Arizona</u>
County	<u>Pima</u>

Area^[2]

- Total**14.11 sq mi (36.55 km²)
- Land**14.11 sq mi (36.55 km²)
- Water**0.00 sq mi (0.00 km²)

Elevation3,123 ft (952 m)

Population (2010)

- Total**48,571
- Estimate** (2016)^[1]N/A

Time zoneUTC-7 (MST (no DST))

ZIP codes85738-85739

Area code(s)520

FIPS code04-11160

GNIS feature ID37213 (https://geonames.usgs.gov/apex/f?p=gnispq:3:::NO::P3_FID:37213)

Historical population

Census	Pop.	%±
U.S. Decennial Census ^[4]		

were non-families. 20.3% of all households were made up of individuals, and 8.2% had someone living alone who was 65 years of age or older. The average household size was 2.67 and the average family size was 3.05.

In the CDP, the population was spread out, with 27.5% under the age of 18, 7.5% from 18 to 24, 25.6% from 25 to 44, 25.4% from 45 to 64, and 14.1% who were 65 years of age or older. The median age was 39 years. For every 100 females, there were 101.5 males. For every 100 females age 18 and over, there were 92.2 males.

The median income for a household in the CDP was \$37,482, and the median income for a family was \$41,114. Males had a median income of \$26,490 versus \$22,667 for females. The per capita income for the CDP was \$16,588. About 7.9% of families and 9.7% of the population were below the poverty line, including 9.4% of those under age 18 and 3.8% of those age 65 or over.

History

Much of Catalina's history and the land it now sits on is connected with the Golder Ranch. According to historian David Leighton of the Arizona Daily Star newspaper, Lloyd Golder III and family moved to Tucson from Illinois in 1956 and by the following year had purchased the Rancho Vistoso, which at the time was a 4,800 acre ranch. In 1959, Golder bought the nearby 18,000-acre, Rail N. Ranch from Roberta Nicholas whose ranch house is now the administration building for the Miraval Resort. The land included parts of what is now Catalina State Park to the south and part of the land where Biosphere 2 now sits, to the north.

From 1961 to 1964 he built the Golder Dam about 4 miles north of the Pinal County line but in a legal action that lasted several decades it was declared unsafe and the lakeside community that would have been called Lago del Oro, was never built. The Saddlebrooke subdivision now occupies that land and only the Lago Del Oro Parkway still exists as a reminder of the failed community. He later developed the Twin Lakes subdivision and the Rail N. Ranch subdivision on his land as well as naming many of the streets on his land.

Around 1976, Chief H.D "Bob" and Della Murray, started Golder Ranch Fire District and retired in 1993. The land for the fire district headquarters, was donated by Lloyd Golder and his brother in law Jim McLaughlin. The new fire department was named after Golder Ranch. Golder's wife Vicki Cox Golder has served on Golder Ranch Fire District Board for many years.

Lloyd Golder III died in 2013. The ranch commonly known as Golder Ranch is legally still called the Rail N. Ranch and is still an active open-range ranch.^[6]

Governmental representation

Catalina is in Arizona's 1st Congressional District, served by Representative, Tom O'Halleran, a Democrat. The CDP is also in Arizona's 11th State Legislative District, served by Representatives Mark Finchem and Vince Leach and Senator Steve Smith, all Republicans.

References

1. "Population and Housing Unit Estimates" (<https://www.census.gov/programs-surveys/popest/data/tables.2016.html>). Retrieved June 9, 2017.

2. "2016 U.S. Gazetteer Files" (https://www2.census.gov/geo/docs/maps-data/data/gazetteer/2016_Gazetteer/2016_gaz_place_04.txt). United States Census Bureau. Retrieved Jul 18, 2017.
3. "US Gazetteer files: 2010, 2000, and 1990" (<https://www.census.gov/geographies/reference-files/time-series/geo/gazetteer-files.html>). United States Census Bureau. 2011-02-12. Retrieved 2011-04-23.
4. "Census of Population and Housing" (<https://www.census.gov/programs-surveys/decennial-census.html>). Census.gov. Retrieved June 4, 2016.
5. "U.S. Census website" (<https://www.census.gov>). United States Census Bureau. Retrieved 2008-01-31.
6. David Leighton, "Street Smarts: Silver-spoon childhood led to ranch life," Arizona Daily Star, Dec. 22, 2014 (http://tucson.com/news/blogs/streetsmarts/street-smarts-silver-spoon-childhood-led-to-ranch-life/article_986426b4-d766-50e5-833b-008901d35a4c.html)

External links

- [Catalina Village Council](http://www.catalinaaz.org/Village%20Council%20Minutes/index.html) (<http://www.catalinaaz.org/Village%20Council%20Minutes/index.html>)
 - David Leighton, "Street Smarts: Silver-spoon childhood led to ranch life (Golder Ranch)," Arizona Daily Star, Dec. 27, 2014 (http://tucson.com/news/blogs/streetsmarts/street-smarts-silver-spoon-childhood-led-to-ranch-life/article_986426b4-d766-50e5-833b-008901d35a4c.html)
-

Retrieved from "https://en.wikipedia.org/w/index.php?title=Catalina,_Arizona&oldid=1033627138"

This page was last edited on 14 July 2021, at 21:11 (UTC).

Text is available under the Creative Commons Attribution-ShareAlike License; additional terms may apply. By using this site, you agree to the Terms of Use and Privacy Policy. Wikipedia® is a registered trademark of the Wikimedia Foundation, Inc., a non-profit organization.



The largest and highest quality local photo tours of only the stuff you need to see!

USA \\\ Arizona \\\ Catalina

Catalina, Arizona Photo Tour



AZ77 and Coronado National Monument



Coronado K-8 School



New homes



Park

"Total Conviction" Buy

This "Total Conviction" Stock Could Be Like Buying Amazon for \$3.19 fool.com



Skyline and scenery



The largest and highest quality local photo tours of only the stuff you need to see!

USA \\\ Arizona \\\ **Catalina**

Catalina, Arizona Photo Tour



Edwin Mac Beth Library



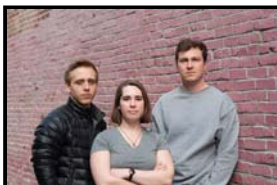
Recreation Center



Shops



Scenery



Cave Creek, AZ: This Brilliant Company Is Disrupting A \$200 Billion Industry

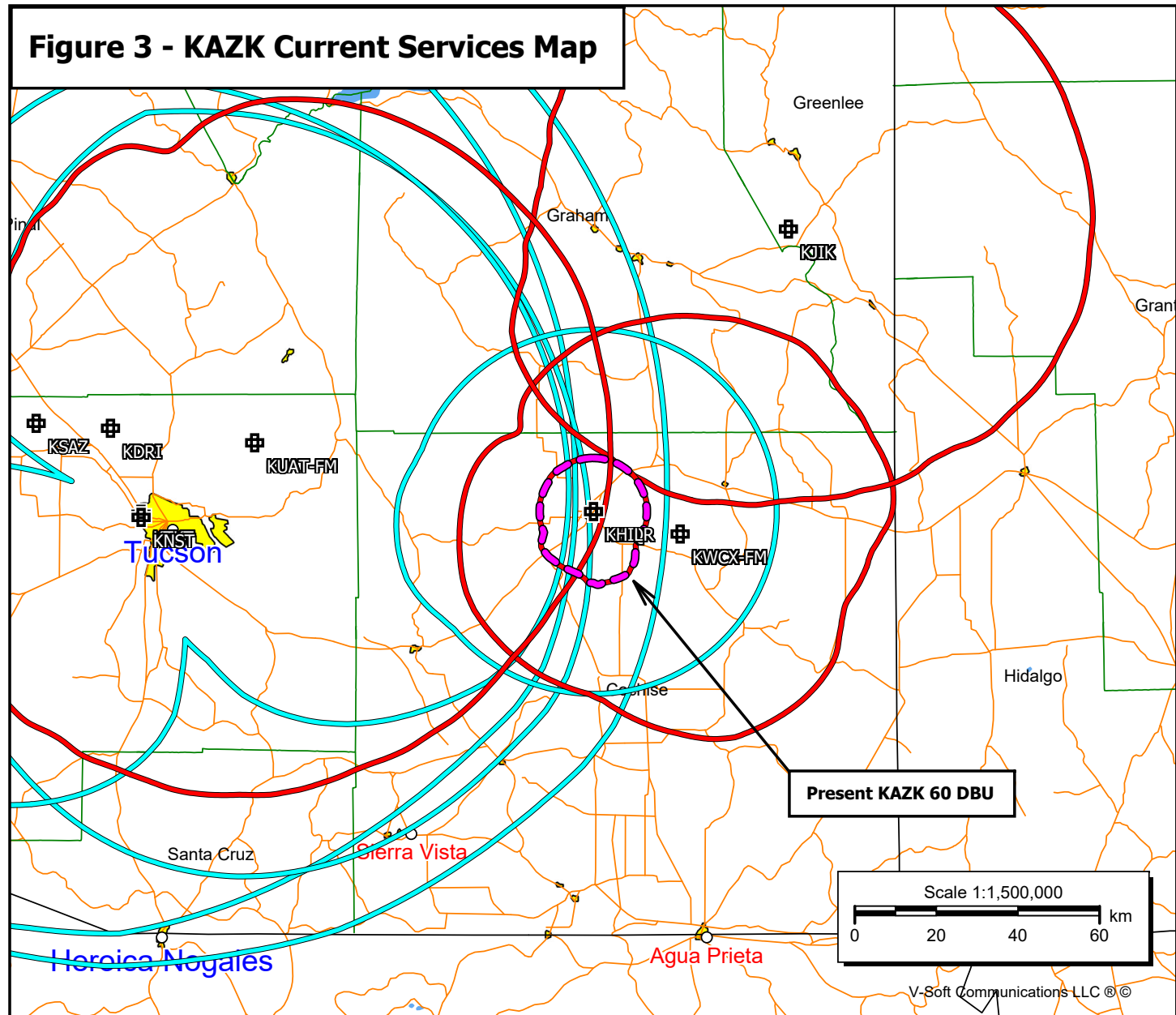
EVERQUOTE



Iris Dewhirst Library

BLED20171214ABV
 Latitude: 32-16-01.30 N
 Longitude: 109-50-02.20 W
 ERP: 2.90 kW
 Channel: 209
 Frequency: 89.7 MHz
 AMSL Height: 1322.0 m
 Elevation: 1272.0 m
 Horiz. Pattern: Omni
 Vert. Pattern: No
 Prop Model: -

- ### Figure 3 - KAZK Current Services Map



KAZK.P (209)
 KLTU (201)
 KAIC (205)
 KUAZ-FM (206)
 KUAT-FM (213)
 KVNG (216)
 KXCI (217)
 KVJC (220)
 KCMT (221)
 KHUD (225)
 KRQQ (229)
 KRDE (231)
 KMXZ-FM (235)
 KLPX (241)
 KIKO-FM (243)
 KMIY (246)
 KSZR (248)
 KOHT (252)
 KIIM-FM (258)
 QMR (262)
 KFMA (271)
 KCDX (276)
 KFLT-FM (281)
 KZLZ (287)
 KTGv (292)
 KHYT (298)
 KGVY
 KCEE
 KWFM
 KCUB
 KTZR
 KXEW
 KTUC
 KFFN
 KTKT

KRDE (231)
 KMXZ-FM (235)
 KLPX (241)
 KIKO-FM (243)
 KMIY (246)
 KSZR (248)
 KOHT (252)
 KIIM-FM (258)
 QMR (262)
 KFMA (271)
 KCDX (276)
 KFLT-FM (281)
 KZLZ (287)
 KTGv (292)
 KHYT (298)
 KGVY
 KCEE
 KWFM
 KCUB
 KTZR
 KXEW
 KTUC
 KFFN
 KTKT
 KNST
 KDRI
 KUAZ
 KVOI
 KSAZ
 KGMS
 KCKY
 KXXT
 KTAR
 KFYI
 KBMB

Figure 4 - Proposed KAZK Services Map

