

## PERDOMO MEDIA GROUP (PMG)

**25 Woodman St. Providence, RI. 02907. Tel 401-338-2642**

### WAVIER REQUEST

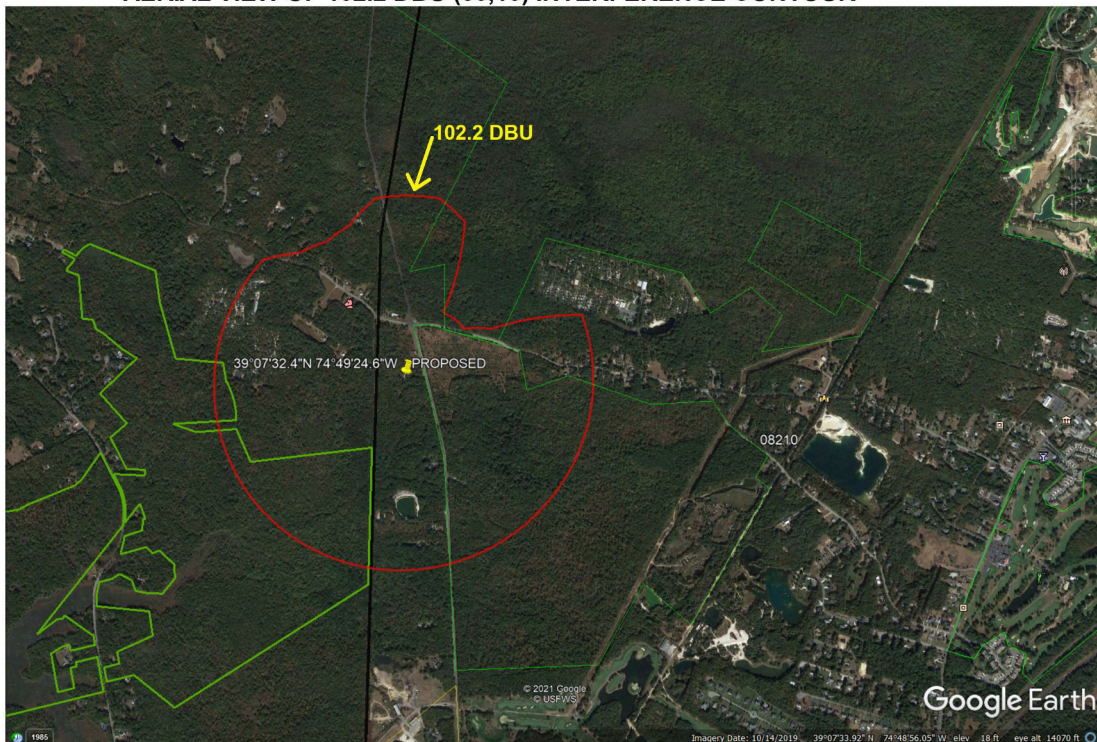
#### WSMJ

This directional station operates on Ch. 220A, 91.9 at North Wildwood, New Jersey. With an effective radiated power of 750 watts, 74.7 meters above mean sea level. At the proposed new site for W222AL, WSMJ places a 62.2 DBU contour over the site. This will overlap the 100 dbu contour from the proposed W222AL antenna. Under Section 74.1204 (d), this interference restriction may be waived if the area where interference occurs is entirely over an unoccupied area. The interfering contour of the translator must be 40 dbu higher than the protected contour of the protected station, or 102.2 DBU. With an antenna at 93 meters AG, and 250 watts ERP, this 50/10 interference contour extends 860 meters from the antenna in the horizontal plane.

Now look at the graph next page showing the distances to this 102.2 DBU interfering contour at various downward vertical angles from the antenna. From Google Earth it appears that the nearest occupied structure is a house about 300 meters to the north of the site, or 313 meters from the antenna. This is a downward angle of 73 degrees, at this angle the interfering contour only extends between 15 and 22 meters from the antenna. That is, interference occurs at a point some 72 meters above ground.

Therefore we can conclude that the 102.2 DBU interference contour is entirely within a small area in the immediate vicinity of the tower. Based on this a waiver of Section 74.1204 is requested in accordance with Living Way Ministries, Inc. (FCC 08-242).

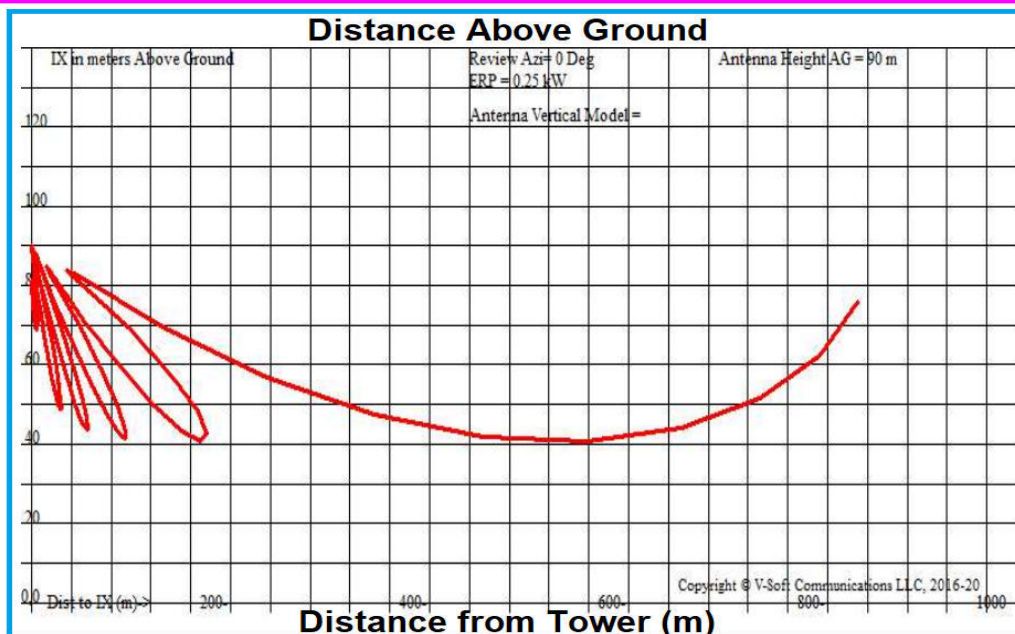
**AERIAL VIEW OF 102.2 DBU (50,10) INTERFERENCE CONTOUR**



# PERDOMO MEDIA GROUP (PMG)

**25 Woodman St. Providence, RI. 02907. Tel 401-338-2642**

## PROTECTION TO SECOND ADJACENT CHANNEL 220 WSMJ 91.9 mHz



**Graph of elevation of 102.2 dbuV contour above ground with distance**

PROPOSED CAPE MAY, NJ, Showing Protection to WSMJ, Channel: 220

Geographic Coordinates: N. 39 07 32.40 W. 74 49 24.60

74.1204(d) Showing - Using FCC 30 SEC Terrain Database

Translator or LPFM Maximum Licensed ERP = 0.25 kW, Channel: 222

Translator or LPFM Antenna Height AG = 90 meters

PROPOSED Antenna Model = PSIFML-4 Special

Protected Station's Contour = 62.20581 dBu

Translator's or LPFM's full Interference contour 102.20581

Review Azimuth = 0 Degrees True

Horizontal Relative Field at Review Azimuth = 1.000

Translator/LPFM ERP on the horizontal at Review Azimuth = 0.25 kW

Distance between stations = 8.9 km

Protected Station= WSMJ, 0.75 kW, 74.7 meters COR AMSL

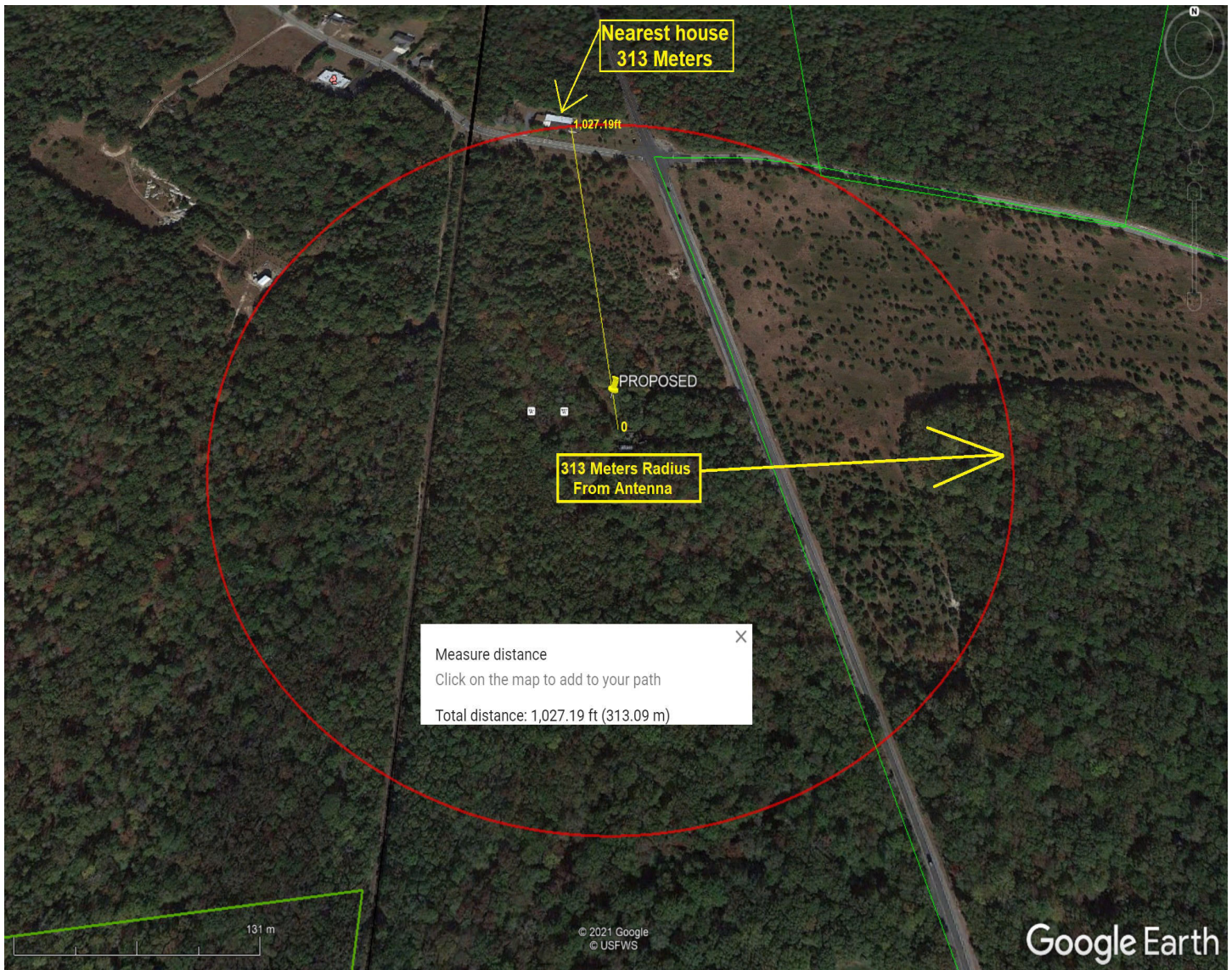
Depression Angle From Degree(Deg)	Vertical Relative Field	Horizontal Relative Field	ERP (kw)	Dist to IX Contour Along Dep. Angle(m)	Dist to IX Contour From Tower Base(m)	Height IX Above Ground (m)
00.00	1.0	1.0	0.2500	860.3586	860.3586	090.000
05.00	0.665	1.0	0.1106	572.1385	569.9613	040.135
10.00	0.051	1.0	0.0007	043.8783	043.2117	082.381
15.00	0.216	1.0	0.0117	185.8375	179.5052	041.902
20.00	0.065	1.0	0.0011	055.9233	052.5507	070.873
25.00	0.114	1.0	0.0032	098.0809	088.8915	048.549
30.00	0.083	1.0	0.0017	071.4098	061.8427	054.295
35.00	0.042	1.0	0.0004	036.1351	029.6001	069.274
40.00	0.085	1.0	0.0018	073.1305	056.0212	042.993
45.00	0.029	1.0	0.0002	024.9504	017.6426	072.357
50.00	0.039	1.0	0.0004	033.5540	021.5681	064.296
55.00	0.059	1.0	0.0009	050.7612	029.1154	048.419
60.00	0.038	1.0	0.0004	032.6936	016.3468	061.686
65.00	0.005	1.0	0.0000	004.3018	001.8180	086.101
70.00	0.017	1.0	0.0001	014.6261	005.0024	076.256
75.00	0.025	1.0	0.0002	021.5090	005.5669	069.224
80.00	0.024	1.0	0.0001	020.6486	003.5856	069.665
85.00	0.018	1.0	0.0001	015.4865	001.3497	074.572
90.00	0.011	1.0	0.0000	009.4639	000.0000	080.536



## PERDOMO MEDIA GROUP (PMG)

25 Woodman St. Providence, RI. 02907. Tel 401-338-2642

Google Earth it appears that the nearest occupied structure is a house about 300 meters to the north of the site, or 313 meters from the antenna.



[www.perdomomediagroup.com](http://www.perdomomediagroup.com)

**Technical Consultant**

[qperdomo@perdomomediagroup.com](mailto:qperdomo@perdomomediagroup.com)

401-338-2642