

74.1204 Compliance Exhibit A - W248CW as Proposed

■ WQMG (246)
■ W248CW.A (248)

W248CW.A - CH248

High Point, NC - 97.5 MHz
FACID:0
File:Proposed
Lat: 35-54-58 N
Long: 080-01-01 W
ERP: 0.125 kW HAAT: 107.78
RCAMSL: 347.0 m
Ground Elev: 266.5 m
Pattern: Directional

WQMG - CH246

Greensboro, NC - 97.1 MHz
FACID:47078
File:BLH20031112AID
Lat: 35-56-42.50 N
Long: 079-51-44.10 W
ERP: 100.00 kW HAAT: 327.0
RCAMSL: 565.0 m
Ground Elev: 230.0 m
Pattern: Directional

2nd Adjacent Compliance with 74.1204

WQMG 246C0 Greensboro, NC places a signal strength of 84.4 dBu at the W248CW Tower Site. The proposed translator interfering signal of 124.4 dBu, in the worst case, extends 47.2 meters from the antenna. The antenna is mounted 80 meters above the ground. There are no tall structures near the tower. Therefore no prohibited interference will occur to WQMG.

84.41 dBu



Scale 1:250,000



74.1204 Compliance Exhibit B - W248CW as Proposed

- W249CN (249)
- W248CW.A (248)

W248CW.A - CH248
High Point, NC - 97.5 MHz
FACID:0
File:Proposed
Lat: 35-54-58 N
Long: 080-01-01 W
ERP: 0.125 kW HAAT: 107.78
RCAMSL: 347.0 m
Ground Elev: 266.5 m
Pattern: Directional

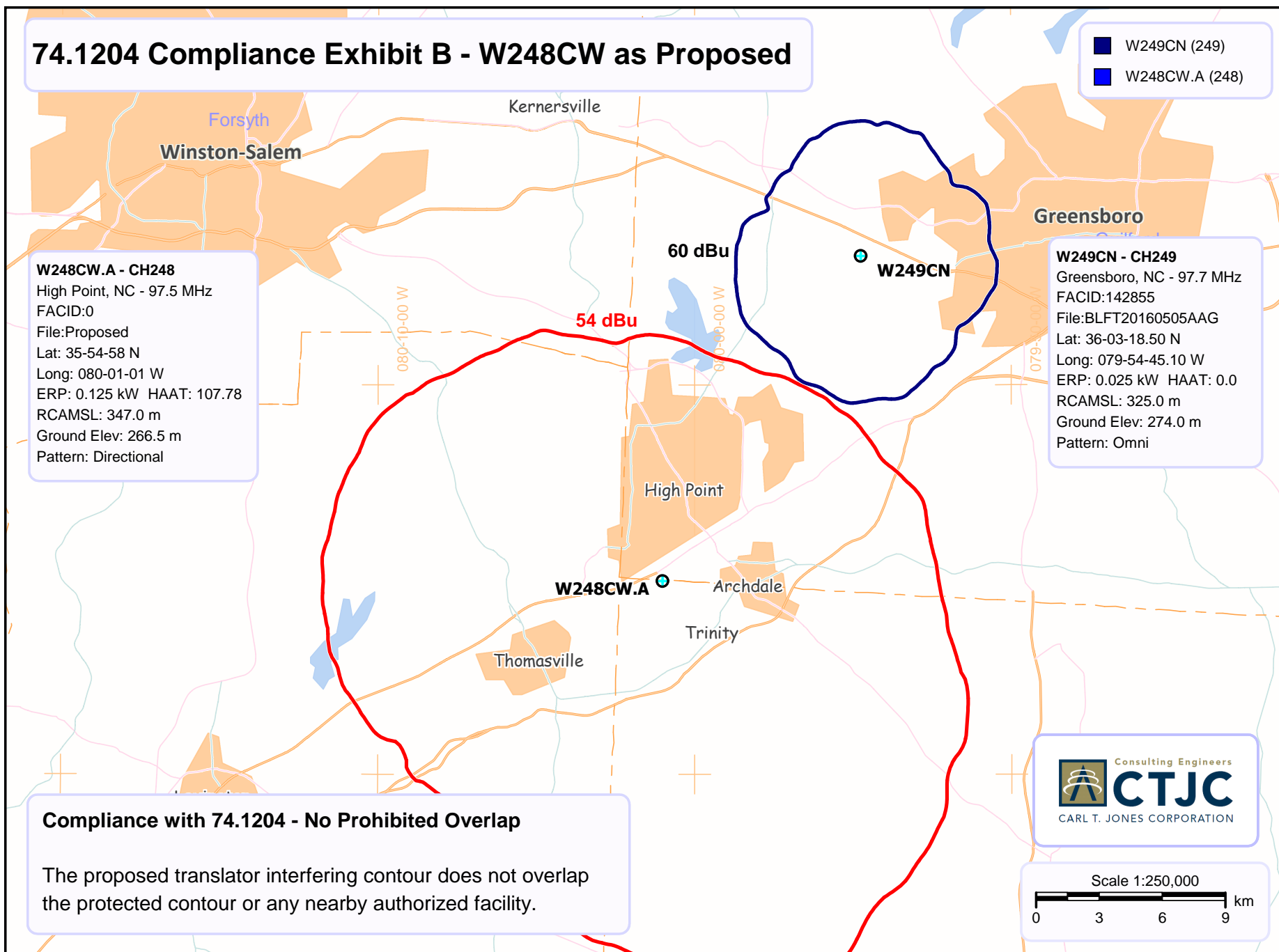
W249CN - CH249
Greensboro, NC - 97.7 MHz
FACID:142855
File:BLFT20160505AAG
Lat: 36-03-18.50 N
Long: 079-54-45.10 W
ERP: 0.025 kW HAAT: 0.0
RCAMSL: 325.0 m
Ground Elev: 274.0 m
Pattern: Omni

Compliance with 74.1204 - No Prohibited Overlap

The proposed translator interfering contour does not overlap the protected contour or any nearby authorized facility.

Consulting Engineers
CTJC
CARL T. JONES CORPORATION

Scale 1:250,000
0 3 6 9 km



74.1204 Compliance Exhibit C - W248CW as Proposed

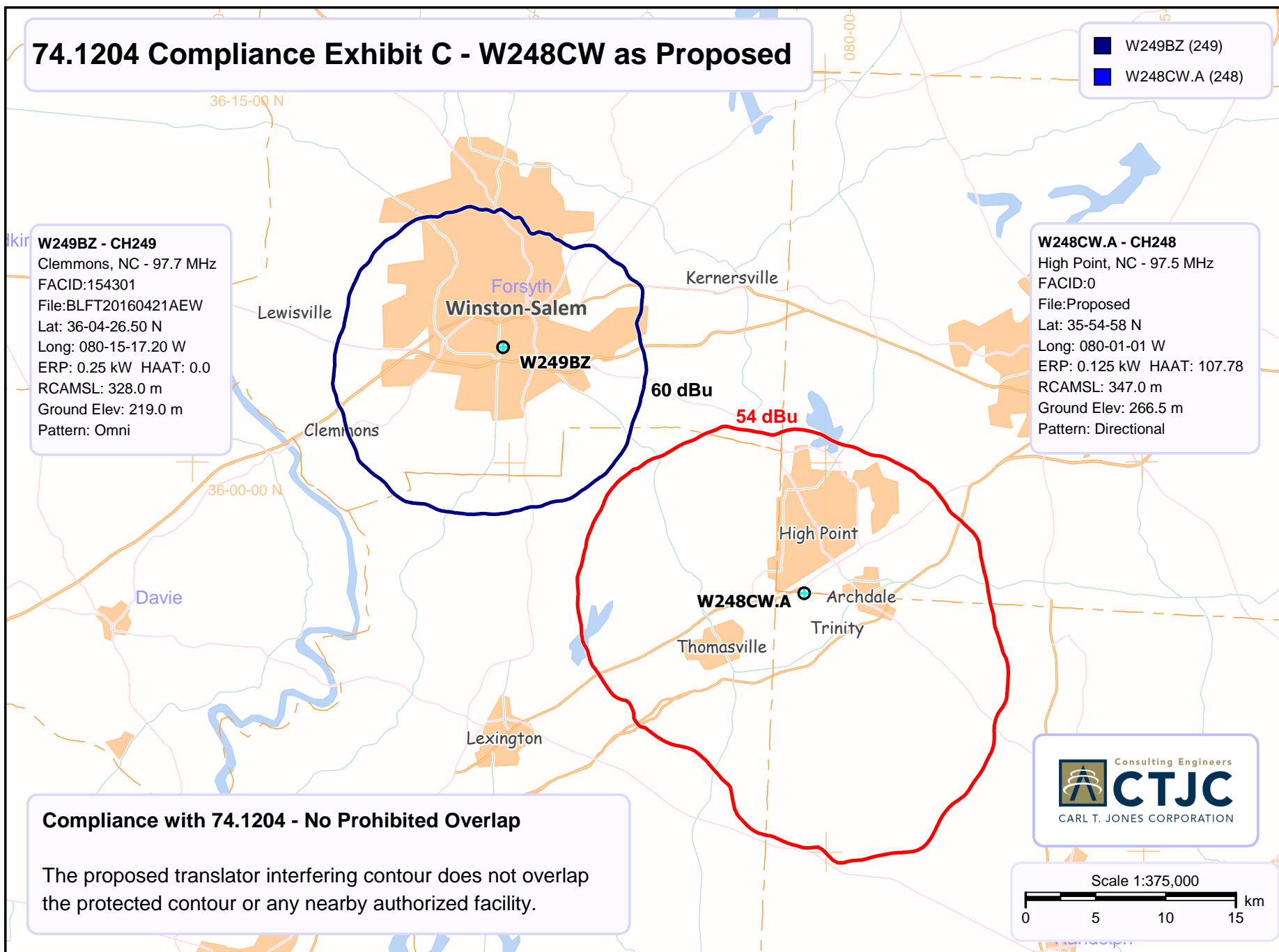
- W249BZ (249)
- W248CW.A (248)

W249BZ - CH249

Clemmons, NC - 97.7 MHz
FACID:154301
File:BLFT20160421AEW
Lat: 36-04-26.50 N
Long: 080-15-17.20 W
ERP: 0.25 kW HAAT: 0.0
RCAMSL: 328.0 m
Ground Elev: 219.0 m
Pattern: Omni

W248CW.A - CH248

High Point, NC - 97.5 MHz
FACID:0
File:Proposed
Lat: 35-54-58 N
Long: 080-01-01 W
ERP: 0.125 kW HAAT: 107.78
RCAMSL: 347.0 m
Ground Elev: 266.5 m
Pattern: Directional



Compliance with 74.1204 - No Prohibited Overlap

The proposed translator interfering contour does not overlap the protected contour or any nearby authorized facility.

Consulting Engineers
CTJC
CARL T. JONES CORPORATION

Scale 1:375,000
0 5 10 15 km

74.1204 Compliance Exhibit D - W248CW as Proposed

- W248DG (248)
- W248CW.A (248)

W248DG - CH248

Mayodan, NC - 97.5 MHz
FACID:202450
File:0000121787
Lat: 36-13-12 N
Long: 079-48-31 W
ERP: 0.25 kW HAAT: 0.0
RCAMSL: 331.9 m
Ground Elev: 249.9 m
Pattern: Directional

W248CW.A - CH248

High Point, NC - 97.5 MHz
FACID:0
File:Proposed
Lat: 35-54-58 N
Long: 080-01-01 W
ERP: 0.125 kW HAAT: 107.78
RCAMSL: 347.0 m
Ground Elev: 266.5 m
Pattern: Directional

60 dBu

40 dBu

W248DG

W248CW.A

Archdale
Trinity
Thomasville

Compliance with 74.1204 - No Prohibited Overlap

The proposed translator interfering contour does not overlap the protected contour or any nearby authorized facility.

Consulting Engineers
CTJC
CARL T. JONES CORPORATION

Scale 1:500,000

0 7 14 21 km