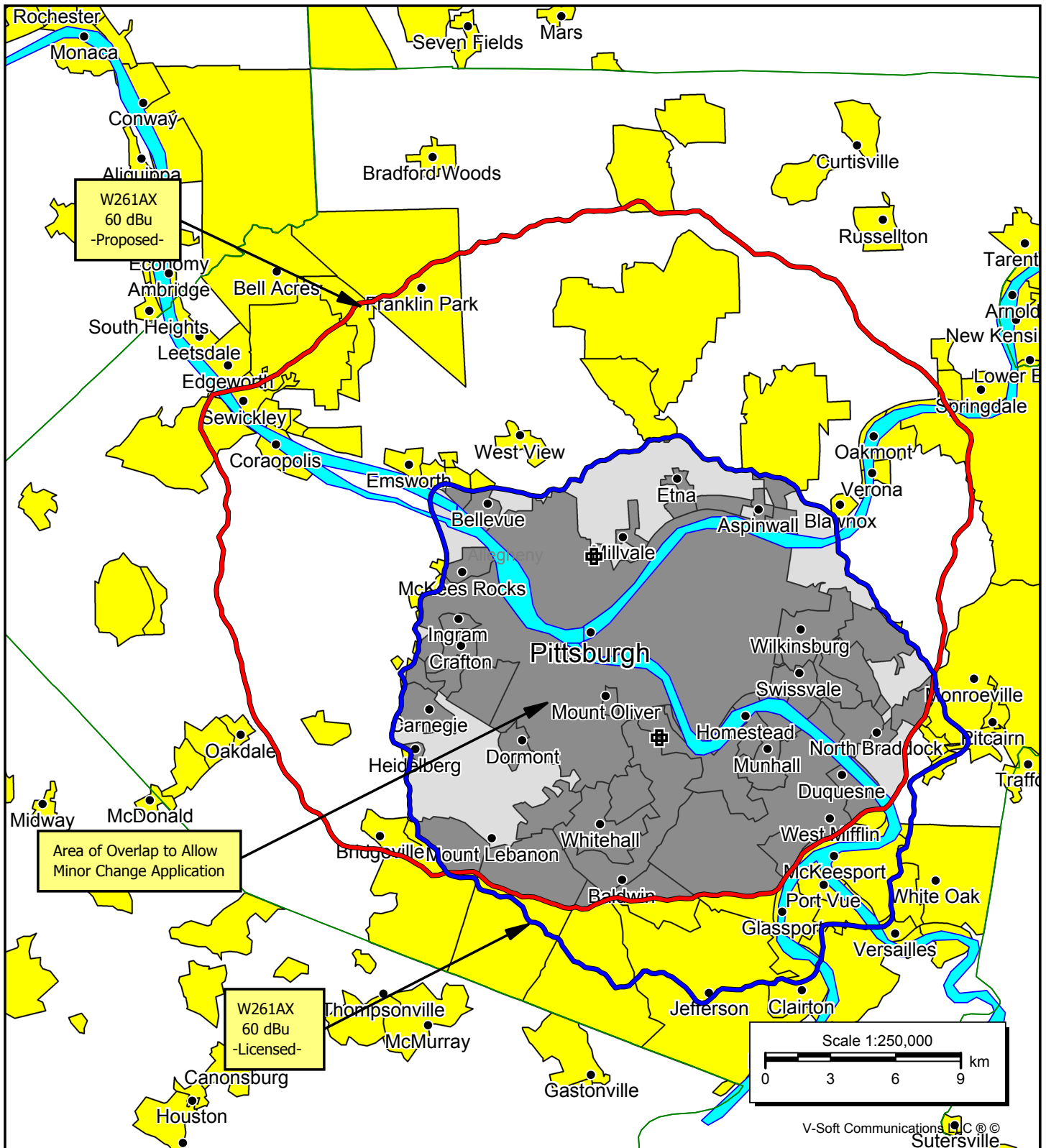


**Technical Statement**  
**Translator W261AX**  
Channel 261D – 100.1 MHz  
0.099 kW ERP – 567.2 m COR AMSL  
Pittsburgh, Pennsylvania  
December 2020

**Minor Change Application:**

This proposal is to locate Translator W261AX on another tower (ASR 1028562) and combine it into the same antenna utilized by WDSY-FM. The 60 dBu contour of the proposed W261AX facility overlaps the 60 dBu contour of the licensed W261AX facility, making this application a minor change. See the Minor Change Demonstration map in this exhibit.



**Minor Change Demonstration**  
**Translator W261AX**  
**Channel 261D - 100.1 MHz**  
**0.099 kW ERP - 567.2 m COR AMSL**  
**Pittsburgh, Pennsylvania**

**Bromo Communications, Inc.**

December 2020