

WJBE-FM FIVE POINTS, AL Proposed Channel 203A (88.5 MHz)
BIG SOUTH COMMUNITY BROADCASTING, INC. - MINOR CHANGE

Co-channel and minor change showing.

Robert J. Robbins, Ph.D.
www.radiodataservices.com
radiodataservices@radiodataservices.com
(305) 234-9309

PROPOSED:
Service: FM
33 57 58.38 N
87 12 56.57 W
Ch.203A (88.5 MHz)
ERP: 1.6 kW
Ant.: OMNI
Hgt.AGL: 36 m
Hgt.AMSL: 239 m
HAAT: 60.7 m
DEM: GLOBE
ASR: WATER TWR.

WQPR MOD
 Ch.204C2 88.7MHz
 54 dBu F(50,10)

WJBE-FM PROP
 Ch.203A 88.5MHz
 54 dBu F(50,10)

WJBE-FM PROP
 Ch.203A 88.5MHz
 60 dBu F(50,50)

WJUV L2C
 Ch.202A 88.3MHz
 54 dBu F(50,10)

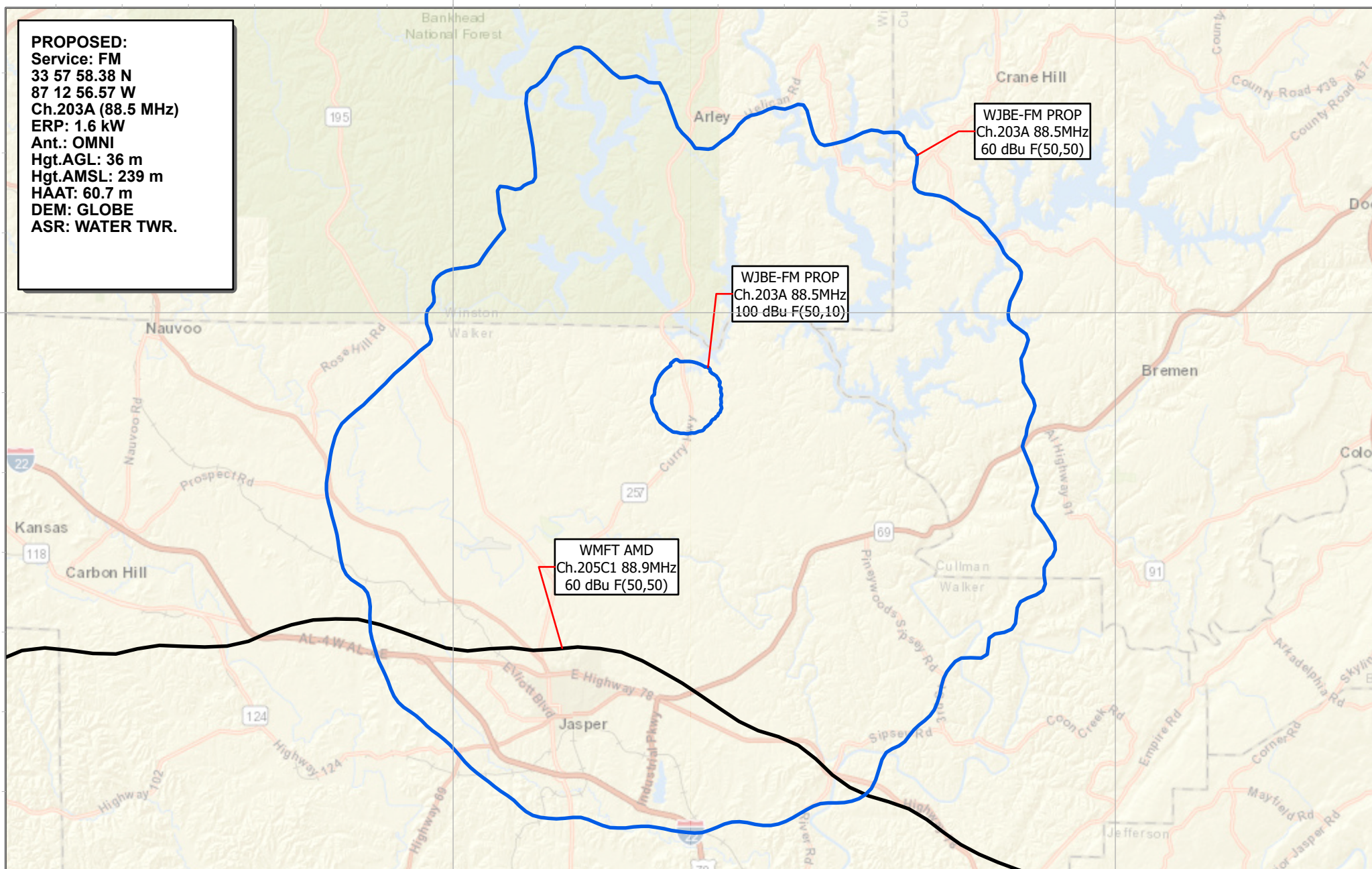
WJUV L2C
 Ch.202A 88.3MHz
 60 dBu F(50,50)

WJUV L2C
Ch.202A 88.3MHz
60 dBu F(50,50)

0 4.25 8.5 17 Kilometers

Robert J. Robbins, Ph.D.
www.radiodataservices.com
radiodataservices@radiodataservices.com
(305) 234-9309

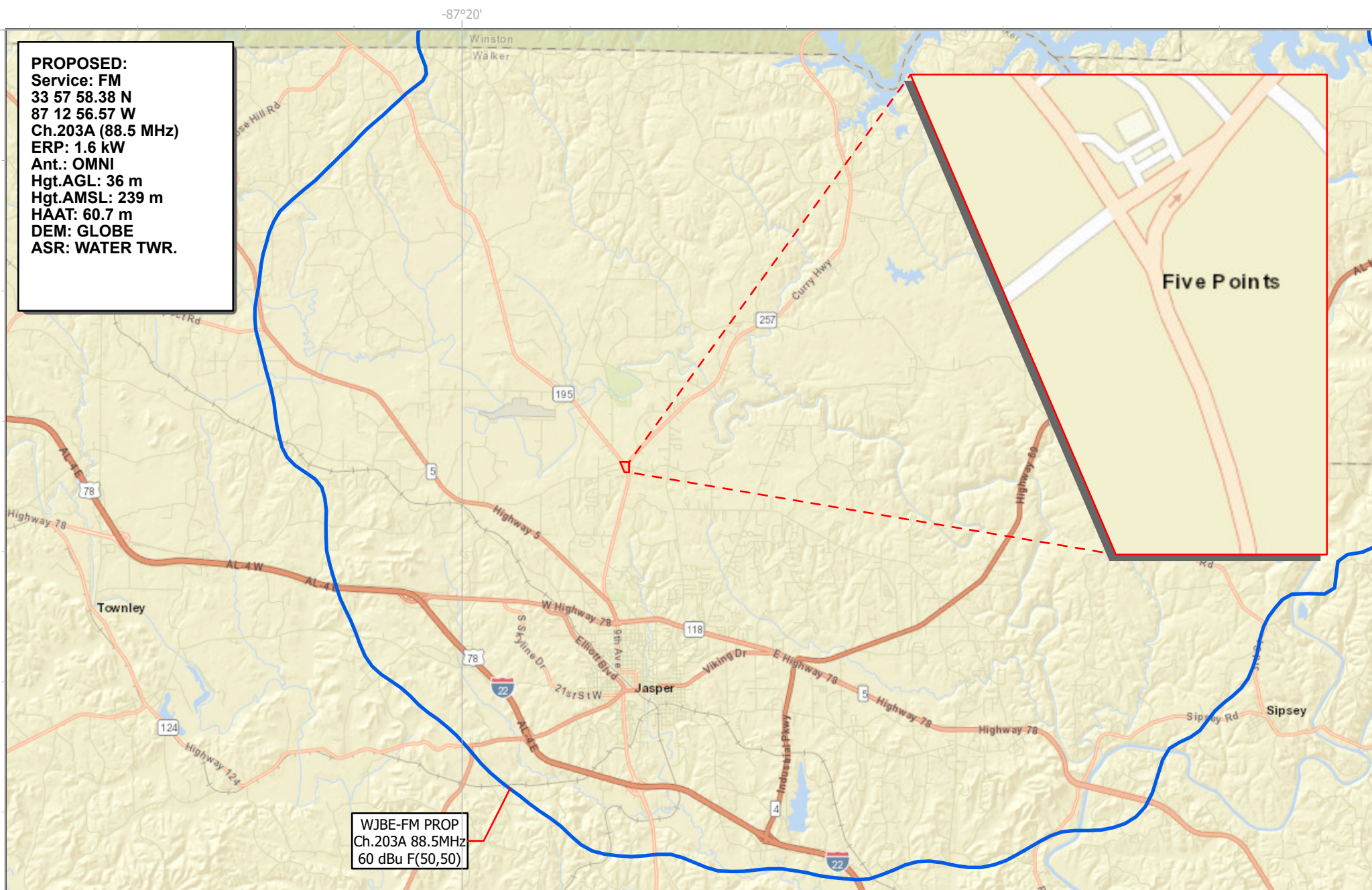
PROPOSED:
Service: FM
33 57 58.38 N
87 12 56.57 W
Ch.203A (88.5 MHz)
ERP: 1.6 kW
Ant.: OMNI
Hgt.AGL: 36 m
Hgt.AMSL: 239 m
HAAT: 60.7 m
DEM: GLOBE
ASR: WATER TWR.



WJBE-FM FIVE POINTS, AL Proposed Channel 203A (88.5 MHz)
BIG SOUTH COMMUNITY BROADCASTING, INC. - MINOR CHANGE

2nd and 3rd adjacent-channel showing.

Robert J. Robbins, Ph.D.
www.radiodataservices.com
radiodataservices@radiodataservices.com
(305) 234-9309



WJBE-FM FIVE POINTS, AL Proposed Channel 203A (88.5 MHz)
BIG SOUTH COMMUNITY BROADCASTING, INC. - MINOR CHANGE

Community coverage: Five Points, Alabama

Robert J. Robbins, Ph.D.
www.radiodataservices.com
radiodataservices@radiodataservices.com
(305) 234-9309

Table 1 - 73.509 Channel Study**WJBE-FM FIVE POINTS, AL - BIG SOUTH COMMUNITY BROADCASTING, INC.****MINOR CHANGE November 2020 (Ch.203A proposed)**

Chan	Class	Call Letters	Type	Status	City	State	Country	Owner	Bearing TO (deg)	Distance (km)	Req. Dist. (km)	Clearance (km)
201	A	WSJL	FM	L-AMD	BESSEMER	AL	US	ELIJAH RADIO, INC.	163.9	66.0	22.6	43.4
201	A	WKRE	FM	L-AMD	ARGO	AL	US	TBTA MINISTRIES	114.8	71.2	21.3	49.9
202	A	WJUV	FM	L-L2C	CULLMAN	AL	US	LA PROMESA FOUNDA	58.0	50.5	34.2	16.3
203	A	WJBE-FM	FM	L-L2C	FIVE POINTS	AL	US	BIG SOUTH COMMUN	110.4	0.6	68.9	-68.3 (applicant)
203	A	WLJR	FM	L-L2C	BIRMINGHAM	AL	US	BRIARWOOD PRESBYT	140.8	81.4	81.1	0.3
203	A	WJIA	FM	L-L2C	GUNTERSVILLE	AL	US	LAKE CITY EDUCATION	58.3	98.0	81.6	16.3
203	A	WKUA	FM	L-MOD	MOUNDVILLE	AL	US	TBTA MINISTRIES	204.3	109.6	102.3	7.3
204	C2	WQPR	FM	L-MOD	MUSCLE SHOALS	AL	US	UNIVERSITY OF ALABA	322.7	85.7	70.6	15.1
204	A	WQOH-FM	FM	L-AMD	SPRINGVILLE	AL	US	LA PROMESA FOUNDA	94.1	86.0	45.4	40.6
205	C1	WMFT	FM	L-AMD	TUSCALOOSA	AL	US	THE MOODY BIBLE INS	190.8	71.0	60.3	10.7

Terrain data DEM: GLOBE

Radiofrequency Electromagnetic Exposure Analysis

Source	Height AGL(m)	Antenna type	Bays	Horizontal ERP (kw)	Vertical ERP (kw)	Power Density $\mu\text{W}/\text{cm}^2$ at 2 meters AGL				
						within 10 meters distance	% controlled environment limit (1000 $\mu\text{W}/\text{cm}^2$)	Max. PD	% uncontrolled environment limit (200 $\mu\text{W}/\text{cm}^2$)	Distance to maximum PD (m)
WJBE-FM (proposed)	36	NICOM BKG1PV	2	0.000	1.600	43.9	4.4%	43.9	22.0%	6.6
						43.9	4.4%	43.9	22.0%	6.6

The proposed facility is excluded from environmental processing under 47. C.F.R. Section 1.1306 (i.e., The facility will not have a significant environmental impact and complies with the maximum permissible radiofrequency electromagnetic exposure limits for controlled and uncontrolled environments).

Calculations made using FCC FM Model assuming "Dipole EPA" model