

Exhibit Showing Relation of Translator to KABW Contour

The proposed translator falls within the 60 dBu contour of KABW. Therefore a waiver of 47 CFR 74.1204 is requested based on the summary below.

As is shown in Figure 1, the proposed signal level of KABW at the location of the transmitter antenna for K234DA is 85.7 mV/m.

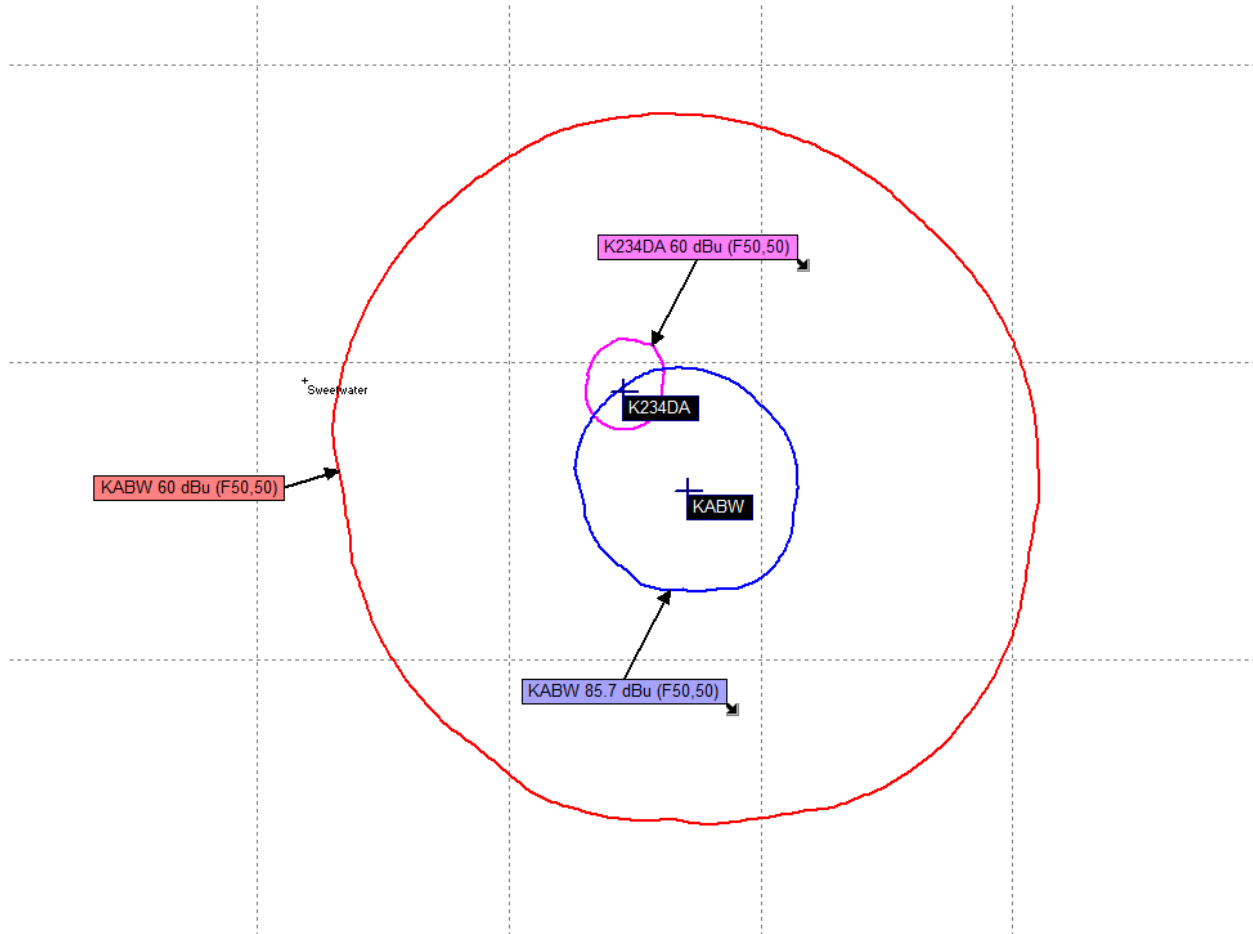


Figure 1

According to the tabulation data below (Table 1), the closest that the interfering contour comes to ground level is 20 meters, at a distance of 36.9 meters from the antenna. Therefore the licensee is requesting a waiver of 47 CFR 74.1204 in accordance with the “Living Way Ministries, Inc.” waiver previously granted by the FCC (FCC 08-242). A graphical representation of the data is shown in Figure 2. Additionally, there are no inhabited structures in a radius of 36.9 meters that are 20 meters or taller which would be susceptible to interference as demonstrated in Figure 3.

Downward Angle (degrees)	Relative Vertical Field	ERP(W)	Distance to IX Contour along Depression Angle (m)	Distance to IX contour from tower base (m)	IX Height Above Ground Level (m)	Downward Angle (degrees)	Relative Vertical Field	ERP(W)	Distance to IX Contour along Depression Angle (m)	Distance to IX contour from tower base (m)	IX Height Above Ground Level (m)
0	1.000	250.0	58	58.0	38	46	0.316	25.0	18	12.5	25
1	0.999	249.5	57	57.0	37.0	47	0.299	22.4	17	11.6	25.6
2	0.998	249.0	57	57.0	36.0	48	0.282	19.9	16	10.7	26.1
3	0.995	247.5	57	56.9	35.0	49	0.266	17.7	15	9.8	26.7
4	0.992	246.0	57	56.9	34.0	50	0.250	15.6	14	9.0	27.3
5	0.987	243.5	57	56.8	33.0	51	0.235	13.8	14	8.8	27.1
6	0.982	241.1	57	56.7	32.0	52	0.220	12.1	13	8.0	27.8
7	0.975	237.7	56	55.6	31.2	53	0.206	10.6	12	7.2	28.4
8	0.968	234.3	56	55.5	30.2	54	0.199	9.9	11	6.5	29.1
9	0.960	230.4	55	54.3	29.4	55	0.179	8.0	10	5.7	29.8
10	0.951	226.1	55	54.2	28.4	56	0.166	6.9	10	5.6	29.7
11	0.940	220.9	54	53.0	27.7	57	0.154	5.9	9	4.9	30.5
12	0.929	215.8	53	51.8	27.0	58	0.142	5.0	8	4.2	31.2
13	0.918	210.7	53	51.6	26.1	59	0.131	4.3	8	4.1	31.1
14	0.905	204.8	52	50.5	25.4	60	0.121	3.7	7	3.5	31.9
15	0.892	198.9	51	49.3	24.8	61	0.111	3.1	6	2.9	32.8
16	0.878	192.7	51	49.0	23.9	62	0.101	2.6	6	2.8	32.7
17	0.863	186.2	50	47.8	23.4	63	0.092	2.1	5	2.3	33.5
18	0.848	179.8	49	46.6	22.9	64	0.083	1.7	5	2.2	33.5
19	0.831	172.6	48	45.4	22.4	65	0.075	1.4	4	1.7	34.4
20	0.815	166.1	47	44.2	21.9	66	0.068	1.2	4	1.6	34.3
21	0.798	159.2	46	42.9	21.5	67	0.061	0.9	3	1.2	35.2
22	0.780	152.1	45	41.7	21.1	68	0.054	0.7	3	1.1	35.2
23	0.762	145.2	44	40.5	20.8	69	0.048	0.6	3	1.1	35.2
24	0.744	138.4	43	39.3	20.5	70	0.043	0.5	3	1.0	35.2
25	0.725	131.4	42	38.1	20.3	71	0.038	0.4	2	0.7	36.1
26	0.705	124.3	41	36.9	20.0	72	0.033	0.3	2	0.6	36.1
27	0.686	117.6	39	34.7	20.3	73	0.028	0.2	2	0.6	36.1
28	0.666	110.9	38	33.6	20.2	74	0.025	0.2	2	0.6	36.1
29	0.646	104.3	37	32.4	20.1	75	0.021	0.1	1	0.3	37.0
30	0.626	98.0	35	30.3	20.5	76	0.018	0.1	1	0.2	37.0
31	0.606	91.8	35	30.0	20.0	77	0.015	0.1	1	0.2	37.0
32	0.586	85.8	34	28.8	20.0	78	0.012	0.0	0	0.0	38.0
33	0.566	80.1	33	27.7	20.0	79	0.010	0.0	0	0.0	38.0
34	0.545	74.3	31	25.7	20.7	80	0.008	0.0	0	0.0	38.0
35	0.525	68.9	30	24.6	20.8	81	0.007	0.0	0	0.0	38.0
36	0.505	63.8	29	23.5	21.0	82	0.005	0.0	0	0.0	38.0
37	0.485	58.8	28	22.4	21.1	83	0.004	0.0	0	0.0	38.0
38	0.465	54.1	27	21.3	21.4	84	0.003	0.0	0	0.0	38.0
39	0.445	49.5	26	20.2	21.6	85	0.002	0.0	0	0.0	38.0
40	0.426	45.4	25	19.2	21.9	86	0.002	0.0	0	0.0	38.0
41	0.407	41.4	23	17.4	22.9	87	0.001	0.0	0	0.0	38.0
42	0.388	37.6	22	16.3	23.3	88	0.001	0.0	0	0.0	38.0
43	0.369	34.0	21	15.4	23.7	89	0.001	0.0	0	0.0	38.0
44	0.351	30.8	20	14.4	24.1	90	0.001	0.0	0	0.0	38.0
45	0.342	29.2	20	14.1	23.9						

Table 1

Interference Calculation with respect to KABW

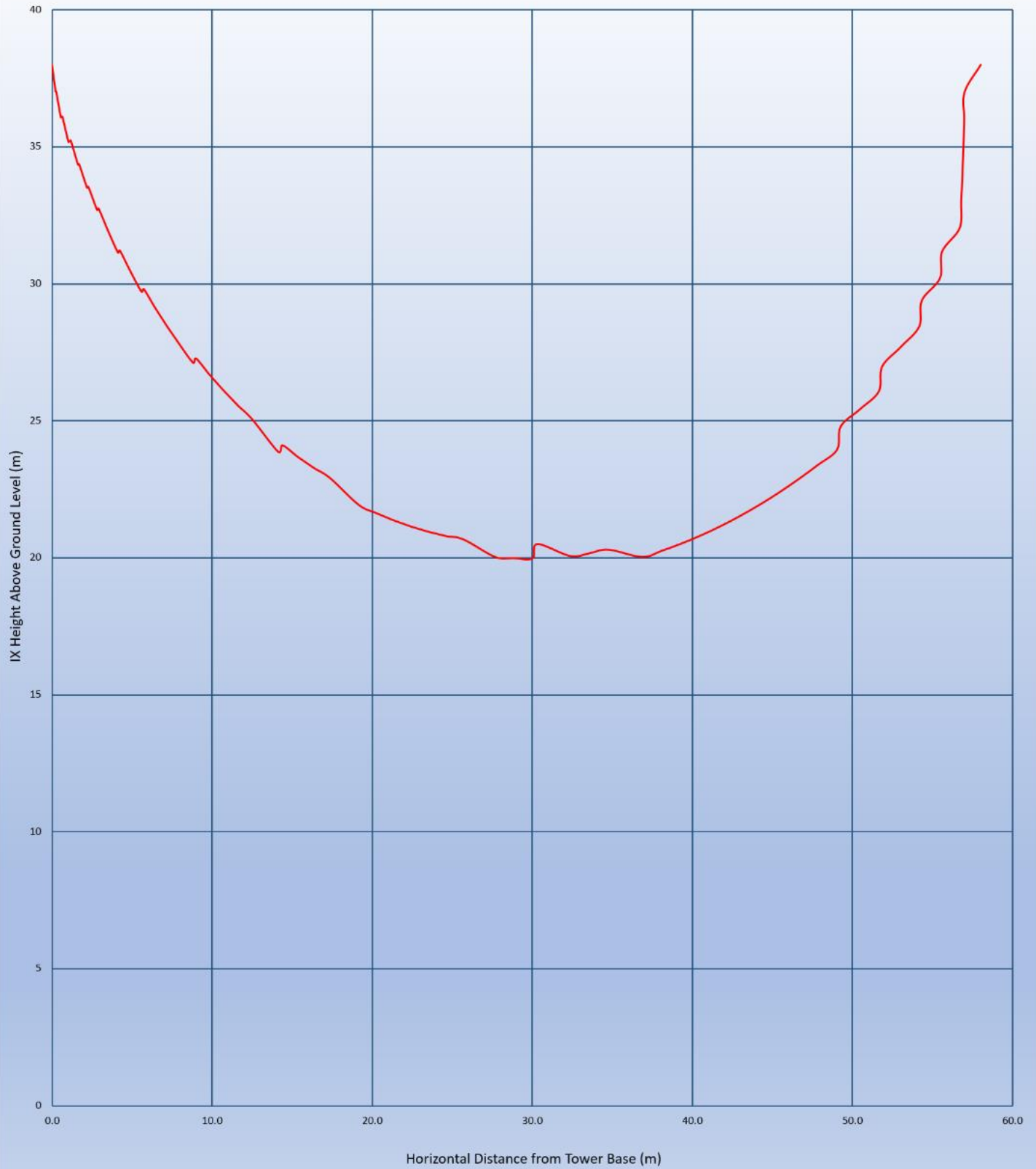


Figure 2

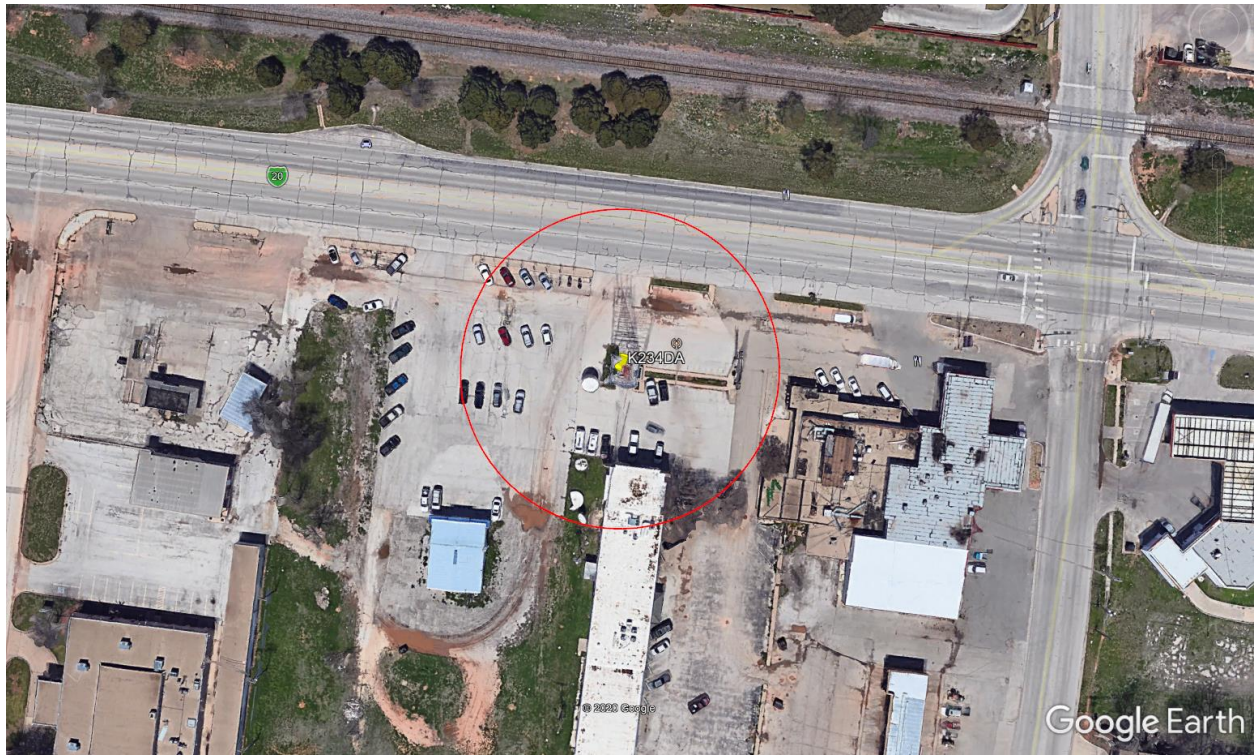


Figure 3