

JOINT COMMUNITY OF LICENSE CHANGES
§307(b) SHOWING
WSLP, WIRY-FM and WPLA

WSLP from Saranac Lake to Warrensburg

WSLP is proposing to change from Channel 227C3 at Saranac Lake, New York (“Saranac Lake”) to Channel 228A at Warrensburg, New York (“Warrensburg”) as their second transmission service. Simultaneous allotments at both locations would be otherwise mutually exclusive.

At Saranac Lake, WSLP currently has a service contour population of 18,430 persons. With the move to Warrensburg, WSLP will have a service contour population of over 93,800 persons.

Warrensburg is a town with an official 2010 census of 4,094 persons and has already been established as a community for allotment purposes with the licensed operation of WFFG-FM, which has been licensed to Warrensburg since 1992.¹

At Warrensburg, the proposed WSLP facility would place a community coverage contour into the Glens Falls, New York Urbanized Area (UA), however, the community coverage contour overlap does not exceed 50 percent of the land area and population of the Glens Falls UA. A population count within the community coverage contour that is also in the UA is 9,913, which represents 15.1% of the total UA of 65,443 persons.

In Warrensburg, the proposed facility places a 70 dBu community coverage contour over 93% of the population within the Warrensburg town limits thus considered “substantial compliance” in accordance with *John R. Hughes*.²

Saranac Lake will continue to receive local transmission services on Channel *213A and on 1240 kHz AM.

¹ See File No. BLH-19911113KC, granted Apr. 1, 1992.

² See *John R. Hughes*, Memorandum Opinion and Order, 50 FR 5679 (1985); *Bay Cities Communications Corp.*, Memorandum Opinion and Order, 83 FCC 2d 210 (1980); See also *Minor Changes in Broadcast Facilities*, Report and Order, 12 FCC Rcd. 12371, 12380 (1997).

WIRY-FM from Plattsburgh West to Ray Brook

As a part of this three-way move, WIRY-FM is proposing to specify Channel 264A at Ray Brook, New York in lieu of Channel 264C3 at Plattsburgh West, New York. This will be the first local transmission service for Ray Brook.

Ray Brook is an unincorporated hamlet. Despite that, Ray Brook does have its own post office (ZIP Code 12977). The US Census Bureau attributes a population of 1,849 to this ZIP Code.³

Within Ray Brook, the following businesses identify with the community:

- Ray Brook Brewhouse, 1153 NY Highway 86, Ray Brook, NY 12977
- Curtis Lumber, 1134 New York 86, Ray Brook, NY 12977
- Wiley's Flies, 12977 Sara-Placid Rd., Ray Brook, NY 12977
- High Peaks Ford, 1190 NYS Rt. 86, Ray Brook, NY 12977
- Tractor Supply Company, 1073 NYS Route 86, Ray Brook, NY 12977
- Tail O' the Pup Restaurant, 1186 NY-86, Ray Brook, NY
- Ray Brook Sonoco, 1108 NY-86, Ray Brook, NY 12977

Civic and political services in Ray Brook include:

- Adirondack Park Agency (State of New York), 1133 NY-86 Ray Brook, NY 12977
- NYS Department of Environmental Conservation, Region 5 Headquarters, 1115 NYS Rt. 86, Ray Brook, NY 12977.
- New York State Police, Troop B Headquarters, 1097 NYS Route 86, Ray Brook, NY 12977
- Adirondack Adolescent Offender Facility, 196 Ray Brook Rd., Ray Brook, NY 12977
- Federal Correctional Institute Ray Brook, 128 Ray Brook Rd., Ray Brook, NY 12977

The Commission has previously found that due to the lack of indication of any political, social, economic, cultural or religious organizations that identify themselves with that locality nor any testimony from local residents attesting to a locality's status, it would not be in the public interest to allot a channel to the subject locality.⁴ The Commission also takes into consideration, identity or street addresses of businesses in the area as well as official documentation to support the population it attributes to the proposed community.⁵

³ Of that population, 398 persons are inmates at Adirondack Adolescent Offender Facility (<https://doccs.ny.gov/system/files/documents/2019/05/acapreaadirondackcfreport.pdf>) and 731 persons are inmates at Federal Correctional Institute Ray Brook ("FCI Raybrook") (see https://www.bop.gov/locations/institutions/rbk/prea_rbk.pdf). We do note that at FCI Ray Brook, radio receivers are sold in the Commissary, thus meaning that radios are not considered contraband and that up to 731 inmates would have access to an FM radio. (https://www.bop.gov/locations/institutions/rbk/RBK_CommList.pdf) Based on the data from the correctional institutions, there would be a population 720 persons who are not inmates that can be attributed to Ray Brook.

⁴ See *Mountainaire, Arizona*, Report and Order, 15 FCC Rcd. 3021-3022 (MMB, *denied* 2000).

⁵ See *Littlefield, Arizona*, Report and Order, 15 FCC Rcd. 10263 (MMB, *denied* Apr. 5, 2000; *recon. denied* Oct. 25, 2000, see 15 FCC Rcd 21547; *review denied* Feb. 20, 2002, see 17 FCC Rcd 3729).

In contrast with *Littlefield* and *Mountainaire*, the Petitioner is providing information on this community, the services that it provides and its position as a cluster of major employment centers for various public sector agencies.⁶

Based on the information provided in the record, that it would be in the public interest to allot Channel 264A at Ray Brook, NY as its first transmission service, triggering Priority (3) and as such, show continued interest through the minor modification application for WIRY-FM specify operation at Ray Brook in lieu of Plattsburgh West.

With WSLP removing local third transmission service at Saranac Lake and WIRY-FM specifying first transmission service at Ray Brook, the net change results in all populated areas of the proposed WIRY-FM service contour receiving at least two services and 14,984 persons still receiving at least 5 local transmission services throughout the proposed WIRY-FM service contour (738 persons will receive between 10 and 13 services, 16,545 persons will receive between 5 and 9 services and 1,147 persons will receive between 2 and 4 services).

With WIRY-FM's Class A facility replacing WSLP's Class C3 facility, it will create a small area of 32.8 square kilometers that will only receive one transmission service. This area falls into terrain that is not populated. This area accounts for about 2.5 percent of the land area of the current WSLP service contour. We also note that with the completion of the construction permit for WRGR-FM, Tupper Lake New York to upgrade from Class A to C3⁷, the area only receiving one transmission service will reduce to 28.3 square kilometers.⁸ While the applicant recognizes that there is an "absolute bar" on the creation of "gray areas" in any facility modification⁹, the Commission's guidance would further suggest that white and gray areas are areas that "would leave *populations* with no or only one transmission service".¹⁰ In the instant case the area with only one transmission service has no population attributed to it.¹¹ Therefore, with the proposed modification, all *population* within the current WSLP service contour will continue to receive at least two transmission services in accordance with *Rural Radio*. With the WRGR CP, 683 persons will receive 11-13 services, 16,519 receive 6-10 services and 1,228 persons will receive 3 to 5 services. No population will receive less than 3 services.

⁶ See Appendix, *infra*.

⁷ See File No. BPH-20190506AAM (Granted Sep. 11, 2019). ("WRGR Upgrade")

⁸ While the census block report for this unpopulated area shows a smaller land area for the unpopulated gray area, we measured that area on the map to determine the actual land area of the area in question to reach the measurement of 28.3 kilometers.

⁹ See *Policies to Promote Rural Radio Service and to Streamline Allotment and Assignment Procedures*, Report and Order, 26 FCC Rcd. 2556 (2011) ("Rural Radio") at ¶ 39.

¹⁰ *Id.* at 14. (*emphasis added*)

¹¹ As the included close-up map shows, the area is entirely unpopulated rough terrain. There are no structures and no highways in this area.

WIRY-FM loss from Plattsburgh West

The move of WIRY-FM from Plattsburgh West to Ray Brook will result in the loss of one transmission service for 67,095 persons. Within the 60 dBu service contour of the WIRY-FM facility, despite the loss, over 34,000 persons will still receive between 21 and 27 services, over 24,000 will receive between 16 and 20 services and over 8,600 persons will receive between 11 and 15 services. No location in the currently WIRY-FM service contour will only receive 10 or fewer services if WIRY-FM is moved to Ray Brook.

WPLA from Dannemora to Plattsburgh West

To address the loss of the sole transmission service from Plattsburgh West with the move of WIRY-FM to Ray Brook, a contingent application will be filed to modify WPLA to specify operation on Channel 296A at Plattsburgh West (population 4,129) in lieu of Channel 296A at Dannemora, New York ("Dannemora") (population 1,289).

As WPLA is not changing physical facilities, this specific application will not result in any loss or gain in population. Dannemora will retain first local transmission service from a noncommercial station on Channel *209C2. This change is not disfavored by the Commission as Dannemora is a community of less than 7,500 persons.¹² The community coverage contour does not reach any urbanized areas.

Population gains and losses

<u>Station</u>	<u>Current Location</u>	<u>Pop.</u>	<u>Proposed Location</u>	<u>Pop.</u>	<u>Diff.</u>
WPLA	Dannemora	82,303	Plattsburgh West	82,303	0
WIRY-FM	Plattsburgh West	67,095	Ray Brook	16,131	-50,964
WSLP	Saranac Lake	18,430	Warrensburg	93,818	+75,388
Net Difference:					+24,424

Proposed Allotment Changes

<u>Community</u>	<u>Current</u>	<u>Proposed</u>
Dannemora, NY	*209C2, 296A	*209C2
Plattsburgh West, NY	264C3	296A
Ray Brook, NY	(none)	264A
Saranac Lake, NY	*213A, 227C3	*213A
Warrensburg, NY	262B1	228A, 262B1

¹² See *Policies to Promote Rural Radio Service and to Streamline Allotment and Assignment Procedures*, Report and Order, 26 FCC Rcd. 2556 (2011) ("Rural Radio") at ¶ 39.

Conclusion

The proposed changes will result in a second transmission service for Warrensburg, a community with a population of 3,208 that is separated by terrain from the nearby Glens Falls UA and will introduce first transmission service to Ray Brook. The move out of WIRY-FM from Plattsburgh West will still keep a minimum of 11 transmission services in the loss area which is located just across Lake Champlain from Vermont's most populous city. With the changes made, there will be an overall net gain of over 24,000 persons for the region as this proposed change realigns services away from the more urban area (Burlington) and more towards the rural areas (Warrensburg). Because of the net population gain, the retention of transmission services at all populated locations, the introduction of first local transmission service at Ray Brook and a shift in focus towards rural areas, it is our position that this joint proposal would result in a preferred arrangement of allotments consistent with §307(b) of the Communications Act.

Prepared by
Michelle Bradley, CBT
REC Networks

April 10, 2020

WARRENSBURG, NY – ADD CHANNEL 228A

R E C NETWORKS
LOSS/GAIN STUDY

---- ADDED FACILITY ----

WARRENSBURG NY

Channel: 228A - NAD83 Coordinates: 43.4201 / -73.7598

RCMSL: 644 m - ERP: 0.12 kW

Non-directional antenna

---- TRANSMISSION SERVICE COUNT ----

Includes FM stations based on their appropriate (60/57/54 dBu) contours.

Includes AM stations based on their 2 mV/m daytime contours.

NUMBER OF TRANSMISSION SERVICES	C U R R E N T		P R O P O S E D	
	PERSONS	SQUARE KM	PERSONS	SQUARE KM
4 STATIONS.....	12	0.1	0	0.0
5 STATIONS.....	2093	165.3	12	0.1
6 STATIONS.....	3019	115.4	2093	165.3
7 STATIONS.....	1485	148.2	3019	115.4
8 STATIONS.....	3257	113.0	1485	148.2
9 STATIONS.....	636	49.6	3257	113.0
10 STATIONS.....	3152	68.4	636	49.6
11 STATIONS.....	1431	71.1	3152	68.4
12 STATIONS.....	1102	68.2	1431	71.1
13 STATIONS.....	6387	71.2	1102	68.2
14 STATIONS.....	28316	99.7	6387	71.2
15 STATIONS.....	21975	111.2	28316	99.7
16 STATIONS.....	15465	86.8	21975	111.2
17 STATIONS.....	206	8.2	15465	86.8
18 STATIONS.....	194	19.2	206	8.2
19 STATIONS.....	416	7.9	194	19.2
20 STATIONS.....	481	4.8	416	7.9
21 STATIONS.....	1252	14.3	481	4.8
22 STATIONS.....	2385	16.6	1278	14.4
23 STATIONS.....	580	1.8	2359	16.5
24 STATIONS.....	0	0.0	580	1.8
	93844	1241.1	93844	1241.1

POPULATION OF OUTWARD SERVICE CONTOUR:

POPULATION OF REPLACEMENT SERVICE CONTOUR: 93818

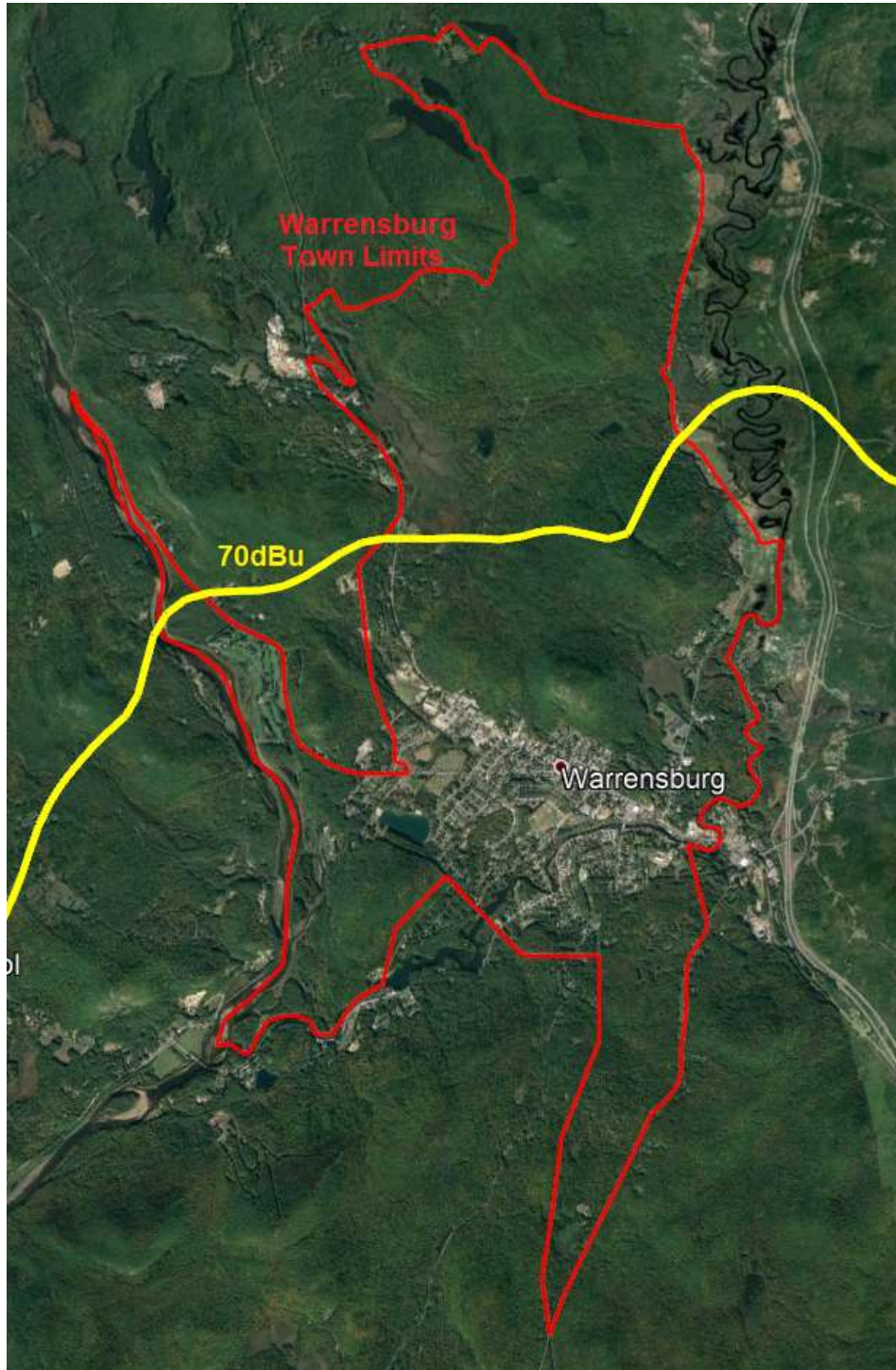
WARRENSBURG, NY – ADD CHANNEL 228A

---- FACILITIES INSIDE OUTWARD SERVICE CONTOUR ----

FAC ID CALL	CHAN.	COMMUNITY OF	LICENSE	STATUS	PERSONS	SQUARE KM	PERSONS	SQUARE KM
69953 WRVT	204C2	RUTLAND	VT LIC		19020	468.3	19020	468.3
76980 WSSK	209A	SARATOGA SPRINGS	NY LIC		4608	35.5	4608	35.5
66425 WXLG	210C3	NORTH CREEK	NY LIC		6929	311.7	6929	311.7
77582 WLJH	214B1	GLENS FALLS	NY LIC		91998	1187.1	91998	1187.1
11120 WNGN	220A	ARGYLE	NY LIC		82745	634.5	82745	634.5
832 WFLY	222B	TROY	NY LIC		8664	127.3	8664	127.3
52637 WNYV	231A	WHITEHALL	NY LIC		65454	409.0	65454	409.0
8678 WBAR-FM	234A	LAKE LUZERNE	NY LIC		87046	852.2	87046	852.2
836 WYJB	238B	ALBANY	NY LIC		7836	121.6	7836	121.6
36767 WCQL	240A	QUEENSBURY	NY LIC		93832	1241.0	93832	1241.0
19650 WCKM-FM	253A	LAKE GEORGE	NY LIC		93832	1241.0	93832	1241.0
15330 WRVE	258B	SCHENECTADY	NY LIC		8030	124.5	8030	124.5
33396 WFFG-FM	262B1	WARRENSBURG	NY LIC		93844	1241.1	93844	1241.1
20467 WJKE	267A	STILLWATER	NY LIC		4013	32.3	4013	32.3
3158 WNYQ	269A	HUDSON FALLS	NY LIC		82797	725.0	82797	725.0
49706 WEQX	274B	MANCHESTER	VT LIC		90586	940.3	90586	940.3
40769 WQSH	278B	COBLESKILL	NY LIC		932	29.4	932	29.4
20596 WMNV	281A	RUPERT	VT LIC		24583	167.0	24583	167.0
6613 WQBK-FM	289B1	MALTA	NY LIC		1121	7.9	1121	7.9
73911 WPYX	293B	ALBANY	NY LIC		8021	124.6	8021	124.6
49716 WKBE	296A	CORINTH	NY LIC		82397	720.3	82397	720.3
72118 WGNA-FM	299B	ALBANY	NY LIC		7802	121.5	7802	121.5
999999 PROPOSED	228A	WARRENSBURG	NY LIC		0	0.0	93818	1241.0
54853 WROW	590	ALBANY	NY LIC		26127	171.4	26127	171.4
15329 WGY	810	SCHENECTADY	NY LIC		78670	598.1	78670	598.1
49715 WMLL	1230	GLENS FALLS	NY LIC		81184	536.9	81184	536.9
3157 WENU	1410	SOUTH GLEN FALLS	NY LIC		77837	477.6	77837	477.6
49092 WWSC	1450	GLENS FALLS	NY LIC		74519	361.6	74519	361.6

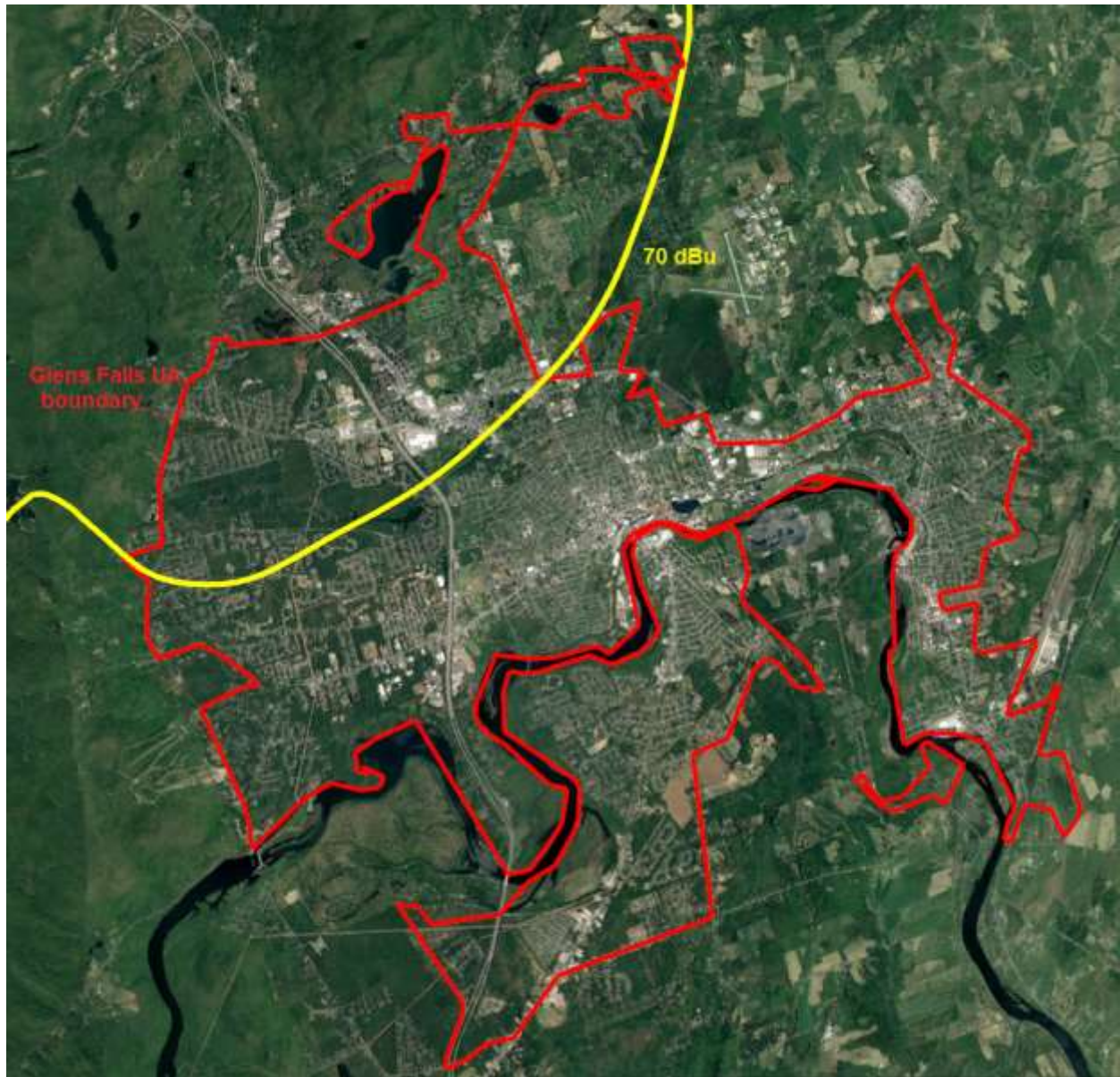
WARRENSBURG, NY – ADD CHANNEL 228A

PROPOSED FACILITY – 70 dBu CONTOUR vs. TOWN OF WARRENSBURG



Area within the Warrensburg town limits outside the 70 dBu community coverage contour is mostly unpopulated areas in the Adirondack mountain range. The Warrensburg population is 4,094 persons with 3,794 persons (92.4%) residing inside the 70 dBu contour and 310 persons residing outside the 70 dBu contour.

WARRENSBURG, NY – ADD CHANNEL 228A
PROPOSED FACILITY – 70 dBu CONTOUR vs. GLENS FALLS UA



The overall area of the Glen Falls UA. Population inside UA and 70 dBu is 9,913 persons (out of 65,443 total for the UA).

SARANAC LAKE, NY - LOSS OF CHANNEL 227C3 AND GAIN OF CHANNEL 264A (PRIOR TO CONSTRUCTION OF CP FOR WRGR-FM)

R E C NETWORKS
LOSS/GAIN STUDY

---- OUTWARD FACILITY ----

NORTH COUNTRY RADIO, INC.
WSLP SARANAC LAKE NY - Facility ID: 165944
Channel: 227C3 - NAD83 Coordinates: 44.2620 / -74.0223
REC Application ID: 1802271

---- REPLACEMENT FACILITY ----

RAY BROOK BY
Channel: 227A - NAD83 Coordinates: 44.2620 / -74.0223
RCAMSL: 634 m - ERP: 2.3 kW
Non-directional antenna

---- TRANSMISSION SERVICE COUNT ----

Includes FM stations based on their appropriate (60/57/54 dBu) contours.
Includes AM stations based on their 2 mV/m daytime contours.

NUMBER OF TRANSMISSION SERVICES	C U R R E N T		P R O P O S E D	
	PERSONS	SQUARE KM	PERSONS	SQUARE KM
1 STATIONS.....	0	0.0	0	32.8
2 STATIONS.....	0	32.8	9	101.3
3 STATIONS.....	438	265.7	465	315.7
4 STATIONS.....	249	205.1	673	101.1
5 STATIONS.....	2848	121.0	3042	146.7
6 STATIONS.....	7317	173.8	7055	130.1
7 STATIONS.....	5498	164.5	5242	146.9
8 STATIONS.....	763	163.6	643	152.7
9 STATIONS.....	496	24.0	563	60.1
10 STATIONS.....	83	48.4	55	53.3
11 STATIONS.....	59	42.4	283	53.2
12 STATIONS.....	500	56.9	266	5.5
13 STATIONS.....	45	1.3	134	15.2
14 STATIONS.....	134	15.2	0	0.0
	18430	1314.6	18430	1314.6

POPULATION OF OUTWARD SERVICE CONTOUR: 18430

POPULATION OF REPLACEMENT SERVICE CONTOUR: 16131

---- FACILITIES INSIDE OUTWARD SERVICE CONTOUR ----

FAC ID	CALL	CHAN.	COMMUNITY OF LICENSE	STATUS	PERSONS	SQUARE KM	PERSONS	SQUARE KM
66428	WXLU	201C3	PERU	NY LIC	683	73.5	683	73.5
175082	WXL5	202A	TUPPER LAKE	NY LIC	123	81.6	123	81.6
91724	WKVJ	209C2	DANNEMORA	NY LIC	2178	352.6	2178	352.6
66435	WSLL	213A	SARANAC LAKE	NY LIC	13203	526.1	13203	526.1
176270	WXL	219A	LAKE PLACID	NY LIC	6697	106.0	6697	106.0
35232	WEZF	225C	BURLINGTON	VT LIC	1845	305.5	1845	305.5
165944	WSLP	227C3	SARANAC LAKE	NY LIC	18430	1314.6	0	0.0
69847	WYUL	234C2	CHATEAUGAY	NY LIC	2559	134.7	2559	134.7
36121	WVNV	243C3	MALONE	NY LIC	240	8.6	240	8.6
164249	WXMS	250C3	AU SABLE	NY LIC	738	127.2	738	127.2
25867	WOKO	255C1	BURLINGTON	VT LIC	908	214.7	908	214.7
52807	WBTZ	260C	PLATTSBURGH	NY LIC	13884	575.3	13884	575.3
56078	WRGR	271A	TUPPER LAKE	NY LIC	168	222.2	168	222.2
20606	WJKS	282C3	KEESEVILLE	NY LIC	179	16.5	179	16.5
68692	WKOL	286C3	PLATTSBURGH	NY LIC	636	26.9	636	26.9

54653	WLPW	288C3	LAKE PLACID	NY LIC	18151	1286.2	18151	1286.2
73315	WNBZ-FM	292C2	SARANAC	NY LIC	17545	703.3	17545	703.3
7839	WIZN	294C2	VERGENNES	VT LIC	837	153.5	837	153.5
164251	WPLA	296A	DANNEMORA	NY LIC	111	13.4	111	13.4
69952	WVPS	300C	BURLINGTON	VT LIC	2460	447.3	2460	447.3
999999	PROPOSED	227C3	SARANAC LAKE	NY LIC	0	0.0	16131	719.3
52806	WEAV	960	PLATTSBURGH	NY LIC	177	16.5	177	16.5
73314	WVSL	1240	SARANAC LAKE	NY LIC	17694	1163.4	17694	1163.4

**SARANAC LAKE, NY - LOSS OF CHANNEL 227C3 AND
GAIN OF CHANNEL 264A (PRIOR TO CONSTRUCTION OF CP FOR WRGR-FM)**



RED – Outward facility 60 dBu

WHITE – Other FM station service contours

BLUE – Inward facility 60 dBu

YELLOW – AM 2 mV/m daytime contour

SARANAC LAKE, NY - LOSS OF CHANNEL 227C3 AND GAIN OF CHANNEL 264A (AFTER CONSTRUCTION OF CP FOR WRGR-FM)

R E C NETWORKS
LOSS/GAIN STUDY

---- OUTWARD FACILITY ----

NORTH COUNTRY RADIO, INC.

WSLP SARANAC LAKE NY - Facility ID: 165944

Channel: 227C3 - NAD83 Coordinates: 44.2620 / -74.0223

REC Application ID: 1802271

---- REPLACEMENT FACILITY ----

SARANAC LAKE NY

Channel: 264A - NAD83 Coordinates: 44.2620 / -74.0223

RCMSL: 643 m - ERP: 2.3 kW

Non-directional antenna

---- TRANSMISSION SERVICE COUNT ----

Includes FM stations based on their appropriate (60/57/54 dBu) contours.

Includes AM stations based on their 2 mV/m daytime contours.

NUMBER OF TRANSMISSION SERVICES	C U R R E N T		P R O P O S E D	
	PERSONS	SQUARE KM	PERSONS	SQUARE KM
1 STATIONS.....	0	0.0	0	2.8
2 STATIONS.....	0	2.8	0	62.3
3 STATIONS.....	8	91.7	20	246.7
4 STATIONS.....	433	352.3	516	155.7
5 STATIONS.....	325	77.6	692	114.0
6 STATIONS.....	955	131.1	1012	112.8
7 STATIONS.....	4861	105.2	4755	101.3
8 STATIONS.....	6890	245.1	6608	217.9
9 STATIONS.....	4137	144.7	4089	173.8
10 STATIONS.....	83	48.4	55	53.3
11 STATIONS.....	59	42.4	139	48.4
12 STATIONS.....	500	56.9	410	10.3
13 STATIONS.....	45	1.3	134	15.2
14 STATIONS.....	134	15.2	0	0.0
	18430	1314.6	18430	1314.6

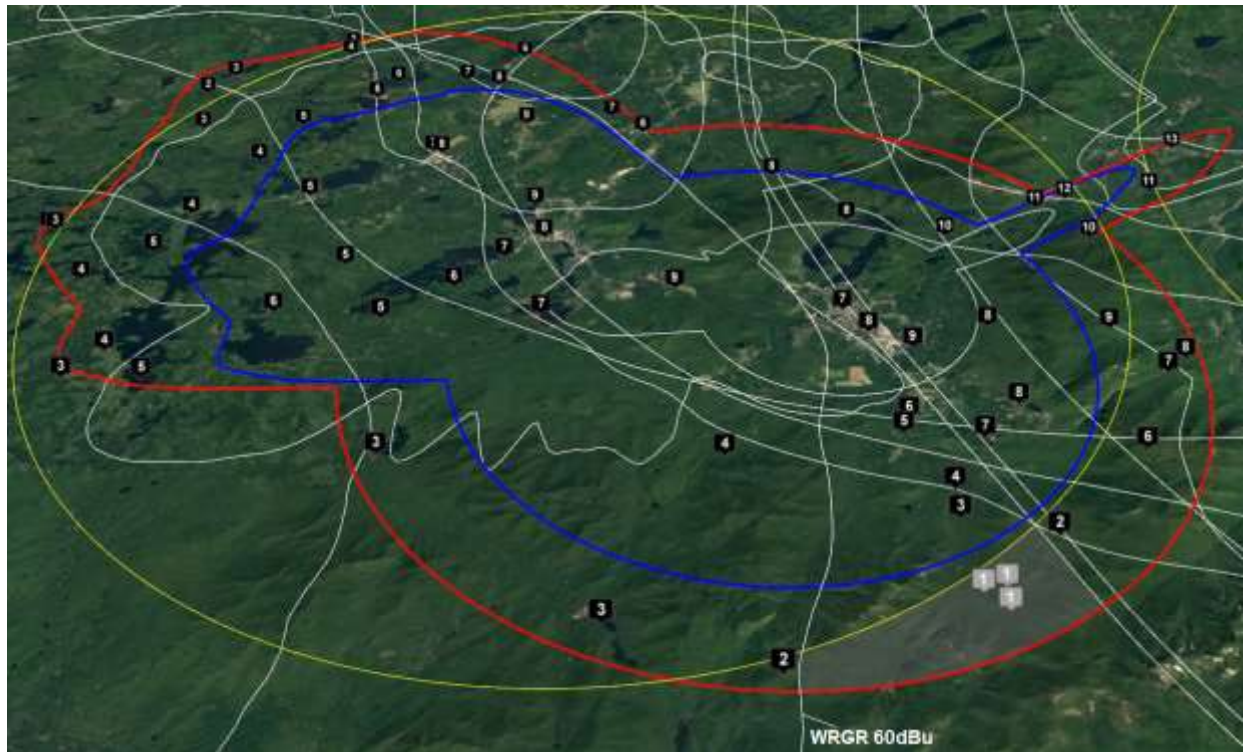
POPULATION OF OUTWARD SERVICE CONTOUR: 18430

POPULATION OF REPLACEMENT SERVICE CONTOUR: 16346

---- FACILITIES INSIDE OUTWARD SERVICE CONTOUR ----

FAC ID	CALL	CHAN.	COMMUNITY OF LICENSE	STATUS	PERSONS	SQUARE KM	PERSONS	SQUARE KM
66428	WXLU	201C3	PERU	NY LIC	683	73.5	683	73.5
175082	WXLS	202A	TUPPER LAKE	NY LIC	123	81.6	123	81.6
91724	WKVJ	209C1	DANNEMORA	NY CP	16309	637.0	16309	637.0
66435	WSLL	213A	SARANAC LAKE	NY LIC	13203	526.1	13203	526.1
176270	WXLL	219A	LAKE PLACID	NY LIC	6697	106.0	6697	106.0
35232	WEZF	225C	BURLINGTON	VT LIC	1845	305.5	1845	305.5
165944	WSLP	227C3	SARANAC LAKE	NY LIC	18430	1314.6	0	0.0
69847	WYUL	234C2	CHATEAUGAY	NY LIC	2559	134.7	2559	134.7
36121	WVNV	243C3	MALONE	NY LIC	240	8.6	240	8.6
164249	WXMS	250C3	AU SABLE	NY LIC	738	127.2	738	127.2
25867	WOKO	255C1	BURLINGTON	VT LIC	908	214.7	908	214.7
52807	WBTZ	260C	PLATTSBURGH	NY LIC	13884	575.3	13884	575.3
56078	WRGR	271C3	TUPPER LAKE	NY CP	12022	794.5	12022	794.5
20606	WJKS	282C3	KEESEVILLE	NY LIC	179	16.5	179	16.5
68692	WKOL	286C3	PLATTSBURGH	NY LIC	636	26.9	636	26.9
54653	WLPW	288C3	LAKE PLACID	NY LIC	18151	1286.2	18151	1286.2
73315	WNBZ-FM	292C2	SARANAC	NY LIC	17545	703.3	17545	703.3
7839	WIZN	294C2	VERGENNES	VT LIC	837	153.5	837	153.5
164251	WPLA	296A	DANNEMORA	NY LIC	111	13.4	111	13.4
69952	WVPS	300C	BURLINGTON	VT LIC	2460	447.3	2460	447.3
999999	PROPOSED	264A	SARANAC LAKE	NY LIC	0	0.0	16346	729.5
52806	WEAV	960	PLATTSBURGH	NY LIC	177	16.5	177	16.5
73314	WVSL	1240	SARANAC LAKE	NY LIC	17694	1163.4	17694	1163.4

**SARANAC LAKE, NY - LOSS OF CHANNEL 227C3 AND
GAIN OF CHANNEL 264A (PRIOR TO CONSTRUCTION OF CP FOR WRGR-FM)
(Cont'd.)**



RED – Outward facility 60 dBu
WHITE – Other FM station service contours

BLUE – Inward facility 60 dBu
YELLOW – AM 2 mV/m daytime contour

UNPOPULATED GRAY AREA
(Highlighted with bold white border)



PLATTSBURGH WEST, NY – CHANNEL 264C3 - LOSS AREA

R E C NETWORKS
LOSS/GAIN STUDY

---- OUTWARD FACILITY ----

RADIOACTIVE, LLC

WIRY-FM PLATTSBURGH WEST NY - Facility ID: 166029

Channel: 264C3 - NAD83 Coordinates: 44.7703 / -73.6128

REC Application ID: 1426539

---- TRANSMISSION SERVICE COUNT ----

Includes FM stations based on their appropriate (60/57/54 dBu) contours.

Includes AM stations based on their 2 mV/m daytime contours.

NUMBER OF TRANSMISSION SERVICES	C U R R E N T		P R O P O S E D	
	PERSONS	SQARE KM	PERSONS	SQARE KM
11 STATIONS.....	0	0.0	12	2.7
12 STATIONS.....	12	2.7	622	38.0
13 STATIONS.....	622	38.0	871	97.4
14 STATIONS.....	871	97.4	1078	46.5
15 STATIONS.....	1078	46.5	6043	165.9
16 STATIONS.....	6043	165.9	2761	121.0
17 STATIONS.....	2761	121.0	3178	137.3
18 STATIONS.....	3178	137.3	1744	52.1
19 STATIONS.....	1744	52.1	8840	160.4
20 STATIONS.....	8840	160.4	7734	120.8
21 STATIONS.....	7734	120.8	18586	53.2
22 STATIONS.....	18586	53.2	4225	74.0
23 STATIONS.....	4225	74.0	2536	32.5
24 STATIONS.....	2536	32.5	2099	40.8
25 STATIONS.....	2099	40.8	2858	73.9
26 STATIONS.....	2858	73.9	3424	66.8
27 STATIONS.....	3424	66.8	484	19.7
28 STATIONS.....	484	19.7	0	1.3
29 STATIONS.....	0	1.3	0	0.0

	67095	1304.5	67095	1304.5

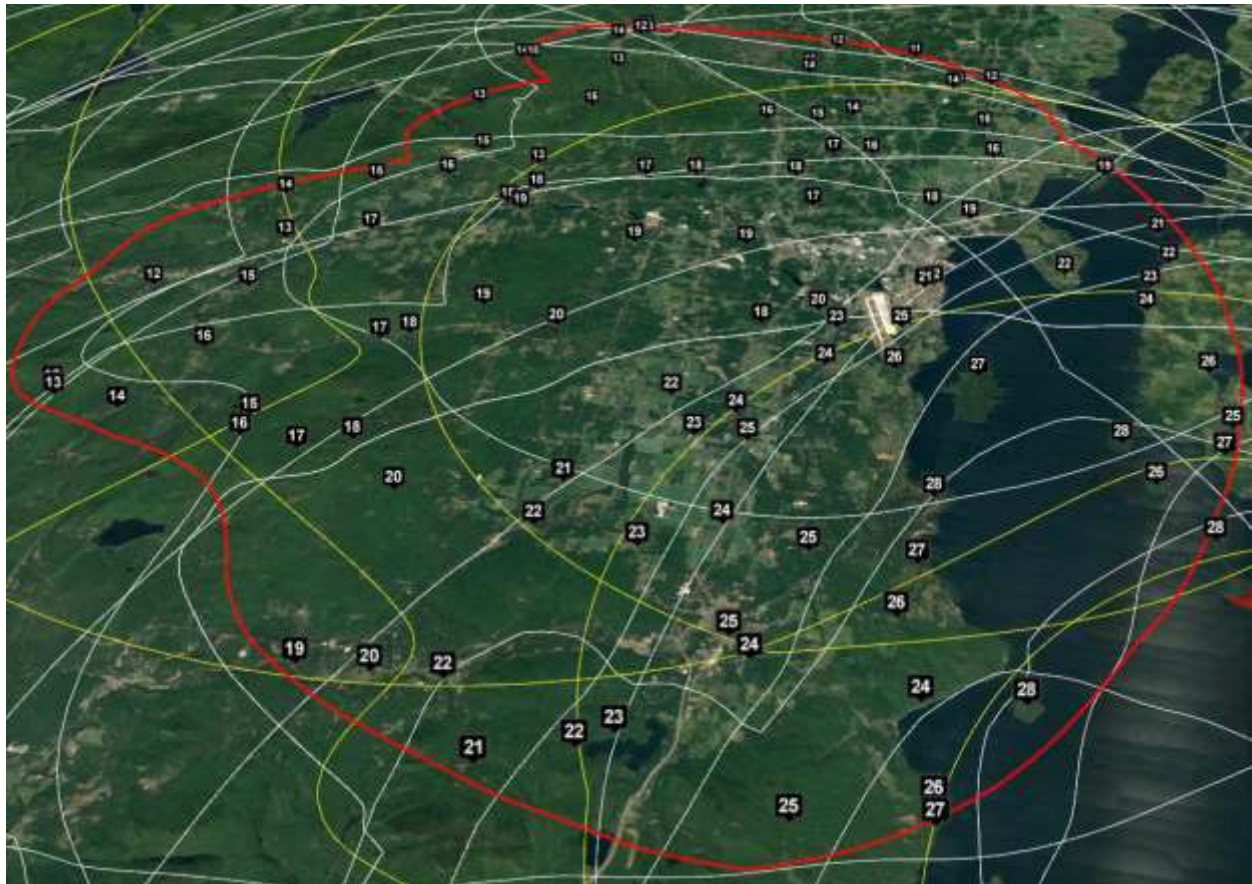
POPULATION OF OUTWARD SERVICE CONTOUR: 67095

---- FACILITIES INSIDE OUTWARD SERVICE CONTOUR ----

FAC ID	CALL	CHAN.	COMMUNITY OF LICENSE	STATUS	PERSONS	SQARE KM	PERSONS	SQARE KM
66428	WXLU	201C3	PERU	NY LIC	66990	1297.3	66990	1297.3
91724	WKVJ	209C2	DANNEMORA	NY LIC	57818	1035.0	57818	1035.0
66566	WRUV	211A	BURLINGTON	VT LIC	0	0.7	0	0.7
78628	WOXR	215C2	SCHUYLER FALLS	NY LIC	63161	1025.4	63161	1025.4
11084	WGLY-FM	218C3	BOLTON	VT LIC	99	1.8	99	1.8
44032	WCEL	220A	PLATTSBURGH	NY LIC	55859	879.5	55859	879.5
35232	WEZF	225C	BURLINGTON	VT LIC	67095	1304.5	67095	1304.5
83867	WIFY	229C3	ADDISON	VT LIC	1094	76.6	1094	76.6
29920	WXXX	238C3	SOUTH BURLINGTON	VT LIC	33172	339.2	33172	339.2
36422	WXZO	244A	WILLSBORO	NY LIC	14180	393.2	14180	393.2
166037	WTNN	248C3	BRISTOL	VT LIC	42152	514.8	42152	514.8
164249	WXMS	250C3	AU SABLE	NY LIC	65914	1200.3	65914	1200.3
25867	WOKO	255C1	BURLINGTON	VT LIC	67010	1296.1	67010	1296.1
52807	WBTZ	260C	PLATTSBURGH	NY LIC	67095	1304.5	67095	1304.5
166029	WIRY-FM	264C3	PLATTSBURGH WEST	NY LIC	67095	1304.5	0	0.0
36269	WCPV	267A	ESSEX	NY LIC	14180	393.2	14180	393.2
58564	WCVT	269C2	STOWE	VT LIC	10757	194.6	10757	194.6
34811	WIXM	272C3	GRAND ISLE	VT LIC	66507	1257.3	66507	1257.3
72034	WCLX	275A	WESTPORT	NY LIC	112	12.6	112	12.6
20592	WWMP	277C3	WATERBURY	VT LIC	2769	113.6	2769	113.6
20606	WJKS	282C3	KEESEVILLE	NY LIC	51342	755.0	51342	755.0

43655	WNCS	284C2	MONTPELIER	VT LIC	9145	198.7	9145	198.7
68692	WKOL	286C3	PLATTSBURGH	NY LIC	65452	1244.4	65452	1244.4
73315	WNBZ-FM	292C2	SARANAC	NY LIC	67095	1304.5	67095	1304.5
7839	WIZN	294C2	VERGENNES	VT LIC	54859	870.5	54859	870.5
164251	WPLA	296A	DANNEMORA	NY LIC	67010	1288.9	67010	1288.9
69952	WVPS	300C	BURLINGTON	VT LIC	67095	1304.5	67095	1304.5
29923	WVMT	620	BURLINGTON	VT LIC	66870	1255.7	66870	1255.7
10130	WCHP	760	CHAMPLAIN	NY LIC	66190	1238.8	66190	1238.8
52806	WEAV	960	PLATTSBURGH	NY LIC	65874	1192.2	65874	1192.2
25864	WJOY	1230	BURLINGTON	VT LIC	2	0.7	2	0.7
73035	WIRY	1340	PLATTSBURGH	NY LIC	56276	679.2	56276	679.2
73613	WCAT	1390	BURLINGTON	VT LIC	9218	217.5	9218	217.5

PLATTSBURGH WEST, NY – CHANNEL 264C3 – REMAINING SERVICES



VARIOUS LOCAL BUSINESSES AND AGENCIES
ATTRIBUTING TO RAY BROOK, NEW YORK

<https://www.bop.gov/locations/institutions/rbk/>



Federal Bureau of Prisons
Correctional Excellence. Respect. Integrity.

[A-Z Topics](#) • [Site map](#) • [FOIA](#)

Search

[Home](#) [About Us](#) [Inmates](#) [Locations](#) [Careers](#) [Business](#) [Resources](#) [Contact Us](#)

! All visiting at this facility has been suspended until further notice.



FCI RAY BROOK
A medium security federal correctional institution with a detention center.


128 RAY BROOK ROAD
RAY BROOK, NY 12977

Email: RBK/ExecAssistant@bop.gov
Phone: 518-897-4000
Fax: 518-897-4216

Inmate Gender: Male Offenders
Population: 606 Total Inmates
Judicial District: Northern New York
County: ESSEX
ROP Region: [Northeast Region](#)

[Visiting Information](#) ▼
[How to send things here](#) ▼
[Resources for sentenced inmates](#) ▼
[Driving Directions](#) 
[Job Vacancies](#) 

<https://www.tractorsupply.com/tsc/store-Raybrook-NY-12977-2017>



[Shop](#)[My TSC Store: Salisbury MD](#)[Order Status](#)[My Account](#)

A message to our Customers - our response to COVID-19 [Learn More](#)

[Home](#) / [Store Locator](#) / [Store Details: Ray Brook NY](#)

Ray Brook NY #2017

[Make My TSC Store](#)

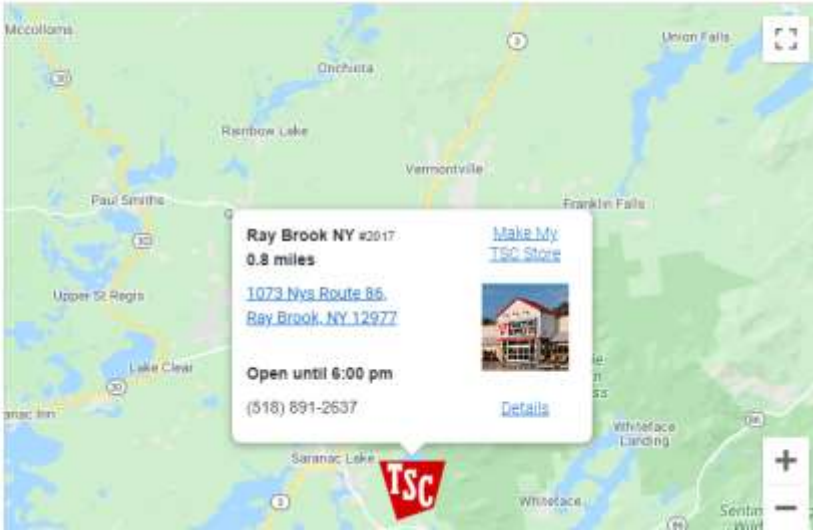
Local Ads

[1073 Nys Route 86](#)
[Ray Brook NY 12977](#)
Open until 6:00 pm
(518) 891-2637


Store Hours:

Sunday:	09:00 am - 06:00 pm
Monday:	08:00 am - 06:00 pm
Tuesday:	08:00 am - 06:00 pm
Wednesday:	08:00 am - 06:00 pm
Thursday:	08:00 am - 06:00 pm
Friday:	08:00 am - 06:00 pm
Saturday:	08:00 am - 06:00 pm

Store Services:
[Pet Vet Clinic](#)



Ray Brook NY #2017
0.8 miles
[1073 Nys Route 86](#)
[Ray Brook NY 12977](#)
Open until 6:00 pm
(518) 891-2637

[Make My TSC Store](#)

[Details](#)

<http://www.dec.ny.gov/about/558.html>

NYS Department of Environmental Conservation

Region 5

Clinton, Essex, Franklin, Fulton, Hamilton, Saratoga, Warren and Washington counties

Headquarters: 1115 NYS Rt. 86, P.O. Box 296, [Ray Brook](#), NY 12977-0296 - [Google Maps](#)

Warrensburg sub-office: 232 Golf Course Road, Warrensburg, NY 12885 - [Google Maps](#)

Northville sub-office: 701 South Main Street, P.O. Box 1316, Northville, NY 12134 - [Google Maps](#)

Program	Phone Number	Fax Number	Email
General Information	(518) 897-1200 Ray Brook (518) 623-1200 Warrensburg (518) 863-4545 Northville	(518) 897-1394 Ray Brook (518) 623-3603 Warrensburg (518) 863-2546 Northville	Info.R5
Regional Director Robert Stegemann	(518) 897-1211	(518) 897-1394	
Adirondack Lakes Survey Corporation	(518) 897-1354	(518) 897-1364	
Air Quality	(518) 623-1212	(518) 623-3603	
Bulk Storage	(518) 897-1241	(518) 897-1245	
Campgrounds	(518) 897-1310 Ray Brook (518) 623-1212 Warrensburg (518) 863-4545 Northville	(518) 897-1395 Ray Brook (518) 623-3603 Warrensburg (518) 863-2546 Northville	campinfo
Campground Reservations	1-800-456-CAMP (1-800-456-2267)		
Emergency and Law Enforcement Dispatch	(518) 891-0235 Search, Rescue (518) 897-1300 Forest Fires (518) 897-1326 Enforcement		
Enforcement Coordinator	(518) 897-1227	(518) 897-1394	
Environmental Monitor	(518) 897-1241	(518) 897-1245	
Environmental Remediation	(518) 897-1241 Ray Brook (518) 623-1200 Warrensburg	(518) 897-1245 Ray Brook (518) 623-3603 Warrensburg	

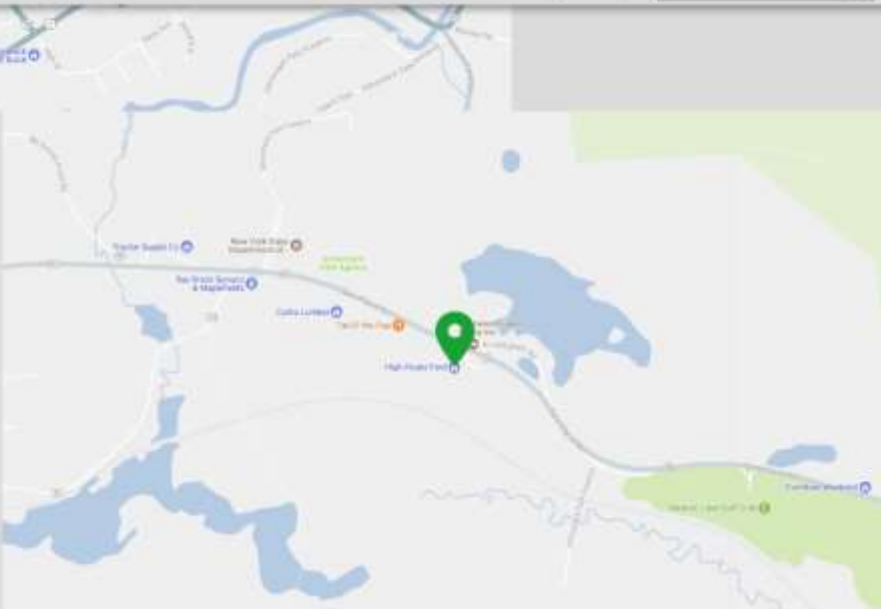
<https://www.egglefieldbros.com/MapLocation>

[Home](#) [Inventory](#) [Specials](#) [Finance](#) [Service & Parts](#) [About Us](#) [Sign In](#)

High Peaks Ford

1190 NYS RT 86
Ray Brook, NY 12977
518-891-5560

[Get Directions](#)



Contact Us

* = required

Contact Information	
First Name *	Last Name *
<input type="text"/>	<input type="text"/>
Email *	Day Phone
<input type="text" value="email@mydomain.com"/>	<input type="text" value="(###) ###-####"/>

<http://www.wileysflies.com/>



FLY TYING ROOM

The most diverse fly fishing outfitter with the largest selection of flies and fly tying materials in the Adirondacks. Guided fly fishing the Ausable River, Chateaugay River, Chazy River, Raquette River, Saranac River, St. Regis River and too many more that we can't name here! Private water available at no additional charge! Come see us and we will make it worth the visit!

Wiley's Flies
1179 Sara-Placid Rd.
Ray Brook, NY 12977
518.891.1829

<https://www.raybrookbrewhouse.com/>

[Home](#) [Menu](#) [Brews](#) [Connect](#)

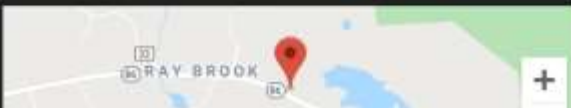
[Search](#)

ABOUT US

Deep in the Adirondacks, in the hamlet of Ray Brook, NY, sits Ray Brook Brewhouse. The Adirondacks, wild and free, provide the Brew Wizard and Chef with unbeatable inspiration. The Brewhouse offers the most intrepid and innovative brews and cuisine at an affordable price for all. Ray Brook Brewhouse is a unique brewery producing wild and traditional brews, paired with equally adventurous dishes using both local and exotic ingredients. We are proud to serve our hearty, hard-working locals as well as the wandering traveler in our rustic and homey space.

Location

1153 NY-86
Ray Brook, NY 12977



Hours

11:00AM to 10:00PM

Seven days a week!




Hours subject to change seasonally!

Contact Us



<https://www.curtislumber.com/locations/ray-brook-ny/>

[Home](#) [Store Locations](#) [Product Catalog](#) [Project Centers](#) [Current Ads](#) [About Us](#) [Employment](#) [Account Login](#)



[Home](#) > [Locations](#) > **Ray Brook, NY**RAY BROOK, NY

CLOSED AT 4:00 PM TODAY

MAIN NUMBER
Phone: 518-891-2216

ADDRESS
1134 New York 86
Ray Brook NY 12977


STORE HOURS
Wed: 7:00am - 4:00pm
Thur: 7:00am - 4:00pm
Fri: 7:00am - 4:00pm
Sat: 8:00am - 12:00pm
Sun: Closed Easter
Please note: our normal hours on Sun are -

Mon: 7:00am - 4:00pm
Tue: 7:00am - 4:00pm

[Get Driving Directions](#)

[Request a Quote](#)

[Email Store](#)



Curtis Lumber Ray Brook serves the area of Essex County, NY, including Saranac Lake, Lake Placid, Tupper Lake, Paul Smith, Keene, and Malone.

Curtis Lumber offers building materials, home improvement and home maintenance products including: treated and untreated lumber, decking roofing, siding, windows, doors, hardware, tools, kitchen and bath design, paints, stains, drywall, and much more!

Since 1890, Curtis Lumber has provided construction professionals and homeowners with quality materials, competitive prices and superior service. The Ray Brook store has been part of the Curtis Lumber family of locations since 2006. No matter what your next project is, you can count on Curtis Lumber!

PROJECT CENTERS

Baths	Flooring	Paints and Stains
Building Decking	Garage Doors	Roofs & Siding Walls

https://troopers.ny.gov/Contact_Us/Troop_Information/Troop_B/

others in public.



[Services](#)

[News](#)

[Government](#)

[Local](#)

[Q Search](#)

[Translate](#)

New York State Police

[General Information](#)

[Crime Prevention](#)

[Specialized Services](#)

[Employment](#)

[Traffic Safety](#)

[Contact Us](#) / [Troop Information](#) / Troop B

Troop B Information

Counties: Clinton, Essex, Franklin, Hamilton and St. Lawrence.

Troop HQ	Address	Phone
Ray Brook	1097 NYS Route 86, Box 100, Ray Brook, NY 12977-0100	518-897-2000
Zone 1 Stations	Address	Phone
Plattsburgh	9 Dunning Way, Plattsburgh, NY 12901	518-563-3761
Chazy	P.O. Box 574, 9774 State Route 9, Chazy, NY 12921	518-563-3761
Dannemora	P.O. Box 612, 40 Emmons St., Dannemora, NY 12929	518-563-3761
Ellenburg	P.O. Box 102, 16 St. Edmunds Way Suite 8, Ellenburg, NY 12933	518-563-3761
Keeseville	58 Liberty St., Keeseville, NY 12944	518-563-3761
Malone	3327 State Route 11, Malone, NY 12953	518-563-3761
Valcour	PO Box 121, Peru, NY 12972	518-563-3761
Zone 2 Stations	Address	Phone
Canton	Public Safety Bldg., 49 1/2 Court St., Canton, NY 13617	315-379-0012
Gouverneur	1005 U.S. HWY 11, Gouverneur, NY 13642	315-379-0012
Massena	29 Sterns Street, Massena, NY 13662	315-379-0012
Norfolk	53 West Main Street, Norfolk, NY 13667	315-379-0012
Ogdensburg	P.O. Box 236, 410 Cedar Street, Ogdensburg, NY 13669	315-379-0012
Star Lake	5 River Road, Rt 3, Box 152, Star Lake, NY 13690	315-379-0012
Winthrop	706 SR 11C, P.O. Box 102, Winthrop, NY 13697	315-379-0012
Zone 3 Stations	Address	Phone

<https://doccs.ny.gov/location/adirondack-adolescent-offender-facility>

Adirondack Adolescent Offender Facility

COUNTY/SECTOR

Essex

ADDRESS

196 Ray Brook Road
P.O. Box 110
Ray Brook, NY 12977-0110

(518) 891-1343

SHARE   

SECTIONS

Overview

Programs

Visitation

PREA Audit Report

Overview

Adirondack Adolescent Offender Facility is a medium security level facility for adolescent males.

NEXT SECTION

Continue 

[Programs](#)

https://data.census.gov/cedsci/all?q=ZCTA5%2012977&g=8600000US12977&hidePreview=false&tid=ACSDP5Y2018.DP05&layer=VT_2018_860_00_PY_D1&cid=DP05_0001E&vintage=2018

Official information that attests a population of 1,849 to the 12977 ZIP Code Tabulation Area (Ray Brook, NY).





Search

ALL TABLES MAPS PAGES

About 2,728 results | **Filter**

EXPLORE DATA

1,849 +/- 438 Total Population in ZCTA5 12977

Source 2018 American Community Survey 5-Year Estimates
<https://www.census.gov/programs-surveys/acs/>



Related Searches

[ZCTA5 12977 Business and Economy](#)
[ZCTA5 12977 Education](#)
[ZCTA5 12977 Employment](#)
[ZCTA5 12977 Families and Living Arrangements](#)
[ZCTA5 12977 Government](#)
[ZCTA5 12977 Health](#)
[ZCTA5 12977 Housing](#)
[ZCTA5 12977 Income and Poverty](#)
[ZCTA5 12977 Populations and People](#)
[ZCTA5 12977 Race and Ethnicity](#)

Tables

ACS DEMOGRAPHIC AND HOUSING ESTIMATES

Survey/Program: American Community Survey

Years: 2018,2017,2016,2015,2014,2013,2012,2011 Table: DP05

	ZCTA5 12977		
	Estimate	Margin of Error	Per
▼ SEX AND AGE			
▼ Total population	1,849	+/-438	
Male	1,815	+/-415	
Female	34	+/-52	
Sex ratio (males per 1...	5,338.2	+/-17,861.5	
Under 5 years	0	+/-12	