

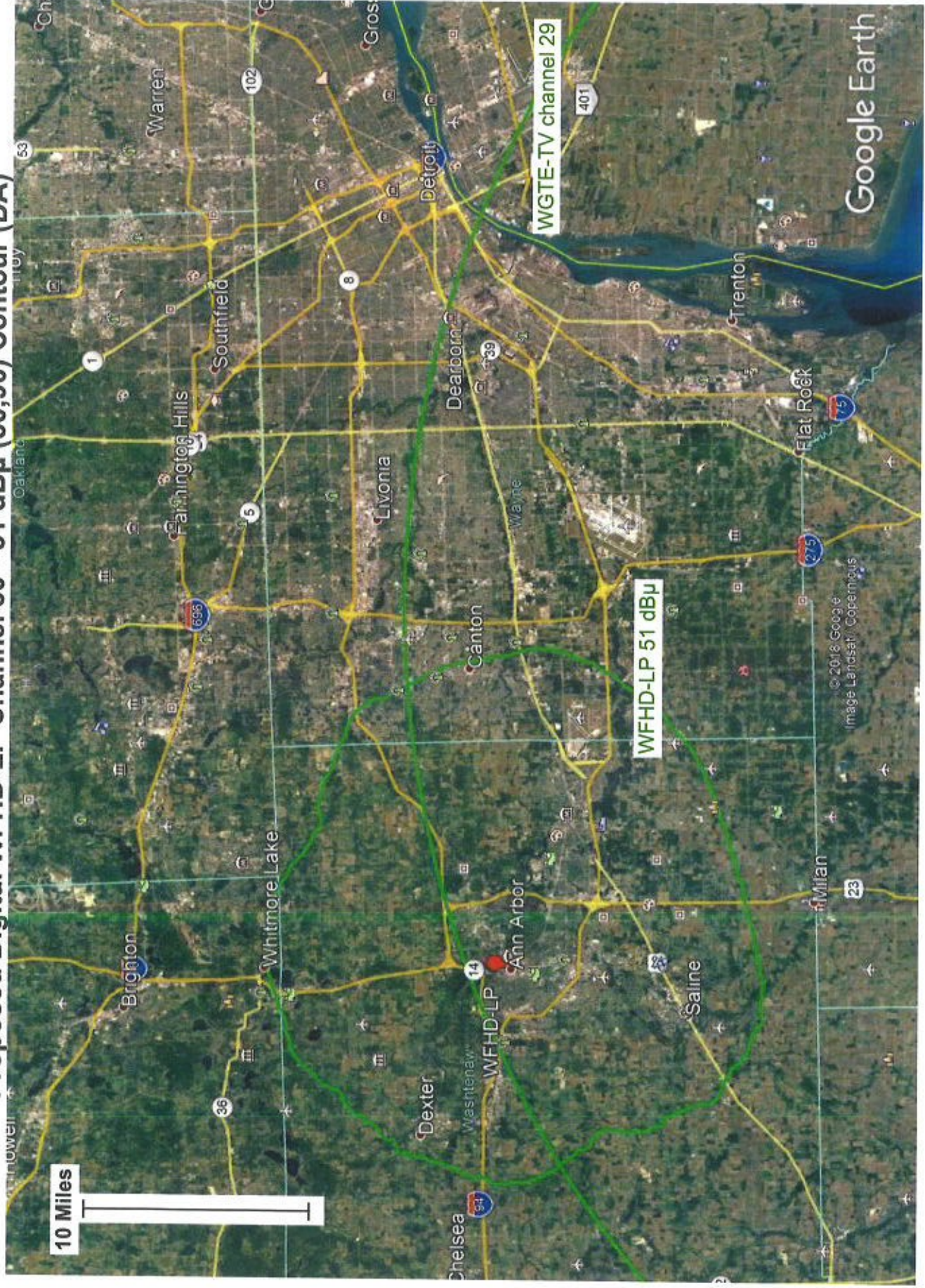
Azim	Rel.FS	ERP [W]	dBk
0.0	0.893	215.311	-6.669
5.0	0.904	220.648	-6.563
10.0	0.916	226.545	-6.448
15.0	0.928	232.520	-6.335
20.0	0.940	238.572	-6.224
25.0	0.952	244.702	-6.114
30.0	0.964	250.910	-6.005
35.0	0.976	257.196	-5.897
40.0	0.988	263.559	-5.791
45.0	1.000	270.000	-5.686
50.0	0.988	263.559	-5.791
55.0	0.976	257.196	-5.897
60.0	0.964	250.910	-6.005
65.0	0.952	244.702	-6.114
70.0	0.940	238.572	-6.224
75.0	0.928	232.520	-6.335
80.0	0.916	226.545	-6.448
85.0	0.904	220.648	-6.563

Azim	Rel.FS	ERP [W]	dBk
90.0	0.893	215.311	-6.669
95.0	0.867	202.956	-6.926
100.0	0.842	191.420	-7.180
105.0	0.817	180.222	-7.442
110.0	0.792	169.361	-7.712
115.0	0.767	158.838	-7.990
120.0	0.742	148.652	-8.278
125.0	0.717	138.804	-8.576
130.0	0.692	129.293	-8.884
135.0	0.667	120.120	-9.204
140.0	0.661	117.969	-9.282
145.0	0.655	115.837	-9.362
150.0	0.649	113.724	-9.441
155.0	0.643	111.631	-9.522
160.0	0.638	109.902	-9.590
165.0	0.632	107.844	-9.672
170.0	0.626	105.807	-9.755
175.0	0.620	103.788	-9.839

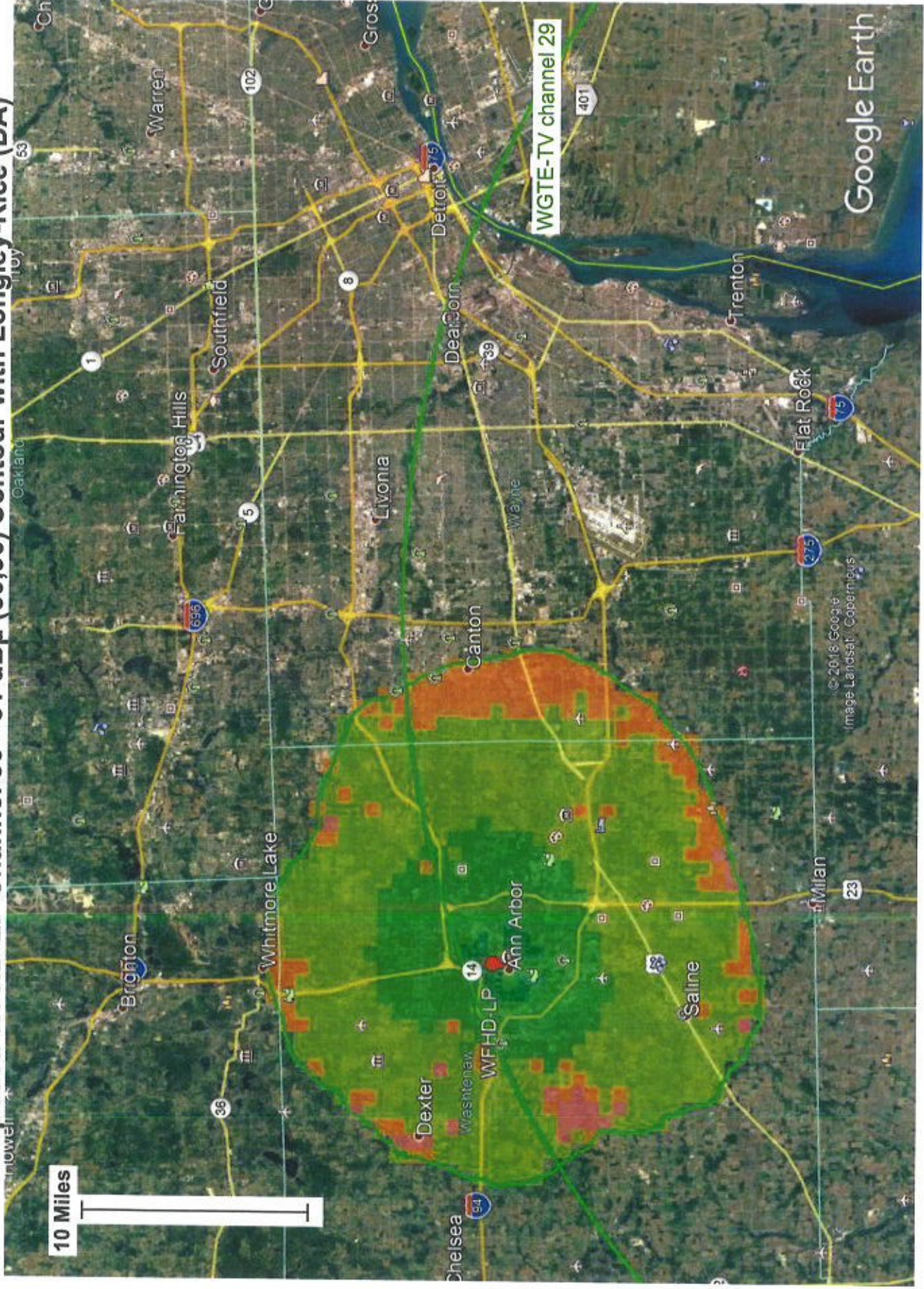
Azim	Rel.FS	ERP [W]	dBk
180.0	0.615	102.121	-9.909
185.0	0.621	104.123	-9.825
190.0	0.628	106.484	-9.727
195.0	0.635	108.871	-9.631
200.0	0.641	110.938	-9.549
205.0	0.648	113.374	-9.455
210.0	0.655	115.837	-9.362
215.0	0.661	117.969	-9.282
220.0	0.668	120.480	-9.191
225.0	0.675	123.019	-9.100
230.0	0.668	120.480	-9.191
235.0	0.661	117.969	-9.282
240.0	0.655	115.837	-9.362
245.0	0.648	113.374	-9.455
250.0	0.641	110.938	-9.549
255.0	0.635	108.871	-9.631
260.0	0.628	106.484	-9.727
265.0	0.621	104.123	-9.825

Azim	Rel.FS	ERP [W]	dBk
270.0	0.615	102.121	-9.909
275.0	0.620	103.788	-9.839
280.0	0.626	105.807	-9.755
285.0	0.632	107.844	-9.672
290.0	0.638	109.902	-9.590
295.0	0.643	111.631	-9.522
300.0	0.649	113.724	-9.441
305.0	0.655	115.837	-9.362
310.0	0.661	117.969	-9.282
315.0	0.667	120.120	-9.204
320.0	0.692	129.293	-8.884
325.0	0.717	138.804	-8.576
330.0	0.742	148.652	-8.278
335.0	0.767	158.838	-7.990
340.0	0.792	169.361	-7.712
345.0	0.817	180.222	-7.442
350.0	0.842	191.420	-7.180
355.0	0.867	202.956	-6.926

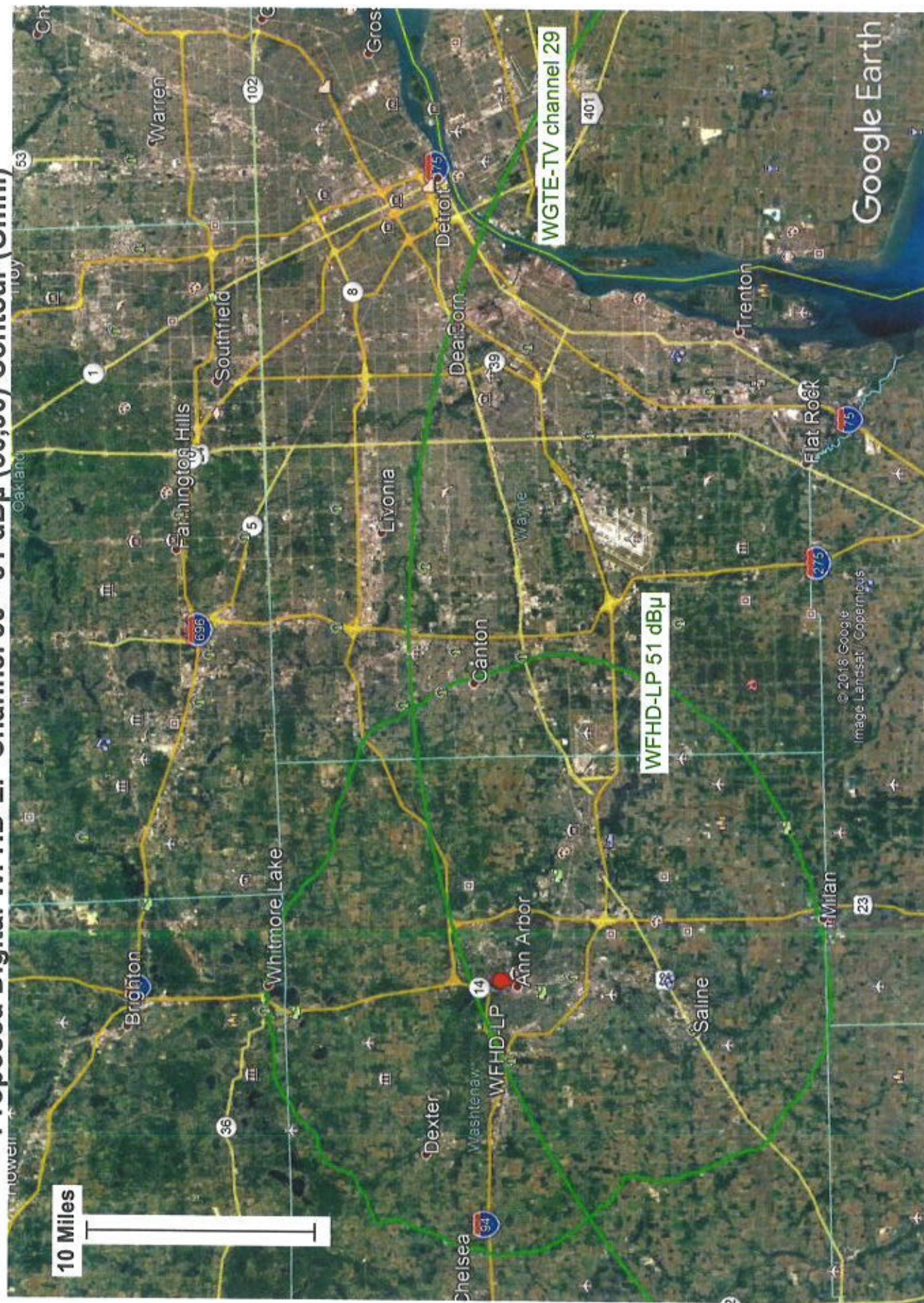
Proposed Digital WFHD-LP Channel 30 - 51 dBμ (50,90) Contour (DA)



Proposed WFHD-LP Channel 30 - 51 dBμ (50,90) Contour with Longley-Rice (DA)



Proposed Digital WFHD-LP Channel 30 - 51 dBμ (50,90) Contour (Omni)



Proposed WFHD-LP Channel 30 - 51 dBμ (50,90) Contour with Longley-Rice (Omni)

