

**Technical Exhibit**

**Minor Modification of Licensed Facility**

This application complies with all engineering standards and requirements of the applicable FCC rules and regulations. A new site is specified as is indicated below:

	Licensed facility	Minor modification of licensed facility
Channel / Class	CH 206 D	CH 206 D
Geographical Coordinates (NAD 83)	41 57 05.6 88 43 15.6	41 52 33.0 88 45 16.2
ASRN	1206851	1009341
Site elevation	268 m	269.4 m
Tower AGL	53 m	152.1 m
Antenna COR AGL	48 m	80.6 m
Antenna COR AMSL	316 m	350.0 m
HAAT	54 m	90.1 m
ERP	0.025 kW (H&V, non-da)	0.019 kW (H&V, non-da)
Antenna	RFS CPF-500-1	Nicom BKG77 1 bay

**Technical Exhibit**

**Tabulation of HAAT / ERP / distance to 60 contour**

CH 206      41 52 33.0 / 88 45 16.2      0.019 kW ERP (H&V, non-da)      350.0 m COR AMSL      90.1 m HAAT

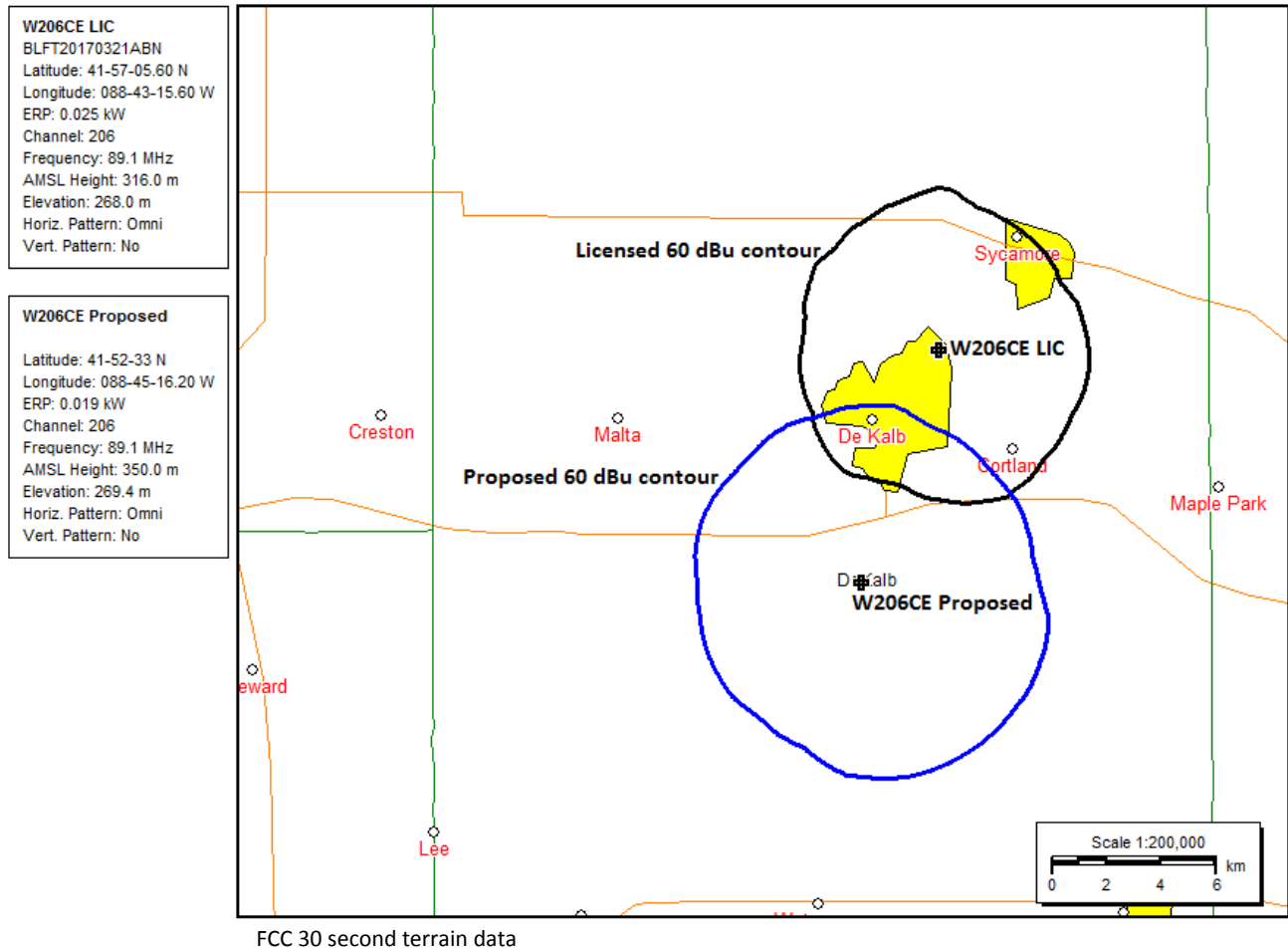
Azi.	AV EL	HAAT	ERP kW	dBk	Field	60-F5
000	260.4	89.6	0.0190	-17.21	1.000	6.45
010	257.8	92.2	0.0190	-17.21	1.000	6.55
020	265.1	84.9	0.0190	-17.21	1.000	6.28
030	265.0	85.0	0.0190	-17.21	1.000	6.28
040	265.0	85.0	0.0190	-17.21	1.000	6.28
050	266.6	83.4	0.0190	-17.21	1.000	6.22
060	264.1	85.9	0.0190	-17.21	1.000	6.31
070	264.2	85.8	0.0190	-17.21	1.000	6.31
080	266.5	83.5	0.0190	-17.21	1.000	6.22
090	262.0	88.0	0.0190	-17.21	1.000	6.39
100	250.4	99.6	0.0190	-17.21	1.000	6.82
110	245.5	104.5	0.0190	-17.21	1.000	6.98
120	242.2	107.8	0.0190	-17.21	1.000	7.09
130	241.7	108.3	0.0190	-17.21	1.000	7.11
140	239.8	110.2	0.0190	-17.21	1.000	7.17
150	240.0	110.0	0.0190	-17.21	1.000	7.16
160	240.2	109.8	0.0190	-17.21	1.000	7.16
170	242.0	108.0	0.0190	-17.21	1.000	7.10
180	246.5	103.5	0.0190	-17.21	1.000	6.95
190	254.4	95.6	0.0190	-17.21	1.000	6.68
200	265.7	84.3	0.0190	-17.21	1.000	6.25
210	266.8	83.2	0.0190	-17.21	1.000	6.21
220	269.9	80.1	0.0190	-17.21	1.000	6.09
230	266.7	83.3	0.0190	-17.21	1.000	6.21
240	268.2	81.8	0.0190	-17.21	1.000	6.15
250	269.8	80.2	0.0190	-17.21	1.000	6.09
260	272.3	77.7	0.0190	-17.21	1.000	5.99
270	273.3	76.7	0.0190	-17.21	1.000	5.95
280	268.2	81.8	0.0190	-17.21	1.000	6.16
290	265.8	84.2	0.0190	-17.21	1.000	6.25
300	266.0	84.0	0.0190	-17.21	1.000	6.24
310	268.1	81.9	0.0190	-17.21	1.000	6.16
320	267.6	82.4	0.0190	-17.21	1.000	6.18
330	264.0	86.0	0.0190	-17.21	1.000	6.32
340	263.7	86.3	0.0190	-17.21	1.000	6.33
350	263.5	86.5	0.0190	-17.21	1.000	6.34

FCC 30 second terrain data  
 (yellow highlighted values establish average HAAT)

Technical Exhibit

**Licensed and proposed 60 dBu contour coverage map**

The proposed 60 dBu contour will continue to overlap the licensed 60 dBu contour.



**Technical Exhibit**

**Allocation Study**

CH 206      41 52 33.0 / 88 45 16.2      0.019 kW ERP (H&V, non-da)      350.0 m COR AMSL      90.1 m HAAT

CH CITY	CALL	TYPE STATE	AZI. <--	DIST FILE #	LAT. LNG.	Pwr (kW) HAAT (M)	INT (km) COR (M)	PRO (km) LICENSEE	*IN* (Overlap in km)	*OUT*
<b><u>Reference station:</u></b>										
206D DeKalb NAD 83 coordinates adjusted to match ASRN 1206851	W206CE	LIC IL	18.2 198.2	8.88 BLFT20170321ABN	41 57 05.6 88 43 15.6	0.025	316	Educational Media Foundation		
<b><u>Co-channel, 1<sup>st</sup>, 2<sup>nd</sup>, &amp; 3<sup>rd</sup> channel relationships:</u></b>										
203A Lee	WAED	LIC IL	225.4 45.3	20.92 BLED20130110ADD	41 44 37.1 88 56 03.3	0.800 49	1.6 307	10.8 American Education Foundation	13.1	9.5
204A Sugar Grove	WSRI	LIC IL	125.5 305.7	32.69 BLED20080410ABW	41 42 16.1 88 26 02.3	0.600 103	1.6 306	15.7 Educational Media Foundation	24.0	16.5
205A Elgin	WEPS	LIC IL	65.5 245.9	43.38 BLED20111221ADC	42 02 11.1 88 16 34.3	0.740 13	13.2 261	9.4 Board Of Education School	23.9	25.0
205B1 Ottawa	WWGN	LIC IL	194.6 14.4	65.96 BLED20051122AAT	41 18 05.1 88 57 11.3	4.100 148	46.5 332	30.6 Family Worship Center Church	12.7	26.0
206A Round Lake Beach	WOKL	LIC IL	46.3 226.8	83.63 BLED20140103ABE	42 23 35.2 88 01 04.9	0.550 127	55.7 356	17.1 Educational Media Foundation	21.7	45.8
206A Naperville	WONC	LIC IL	103.3 283.6	47.67 BLED19940809KC	41 46 34.1 88 11 41.2	1.500 50	53.3 264	14.4 North Central College	-12.5	10.0
206A Lowell	WLPR-FM	LIC IN	117.4 298.3	131.48 BLED20130320ACC	41 19 24.1 87 21 22.1	1.100 112	63.0 323	19.9 Northwest Indiana Public B	61.4	88.0
206B1 Freeport	WNIE	LIC IL	305.3 124.7	84.58 BLED19990528KA	42 18 45.1 89 35 38.4	6.000 110	71.8 368	23.0 Northern Illinois University	7.3	39.3
206B Normal	WGLT	LIC IL	189.3 9.1	157.24 BLED19920716KD	40 28 46.1 89 03 12.2	25.000 115	114.5 348	39.9 Board Of Trustees Of Illinois	35.8	94.8
206A Burlington	WBSD	LIC WI	24.0 204.4	96.87 BLED20020830ADH	42 40 14.1 88 16 18.3	0.210 28	22.7 267	6.8 Burlington Area School Dist	67.8	69.5
207B1 Evanston	WNUR-FM	LIC IL	77.2 257.9	91.32 BLED1609	42 03 12.1 87 40 33.2	7.200 30	24.6 218	16.6 Northwestern University	60.4	65.8
207A Morris	WUON	LIC IL	159.8 339.9	61.71 BLED20140415AAU	41 21 17.1 88 29 55.3	1.350 73	15.1 251	10.6 Olivet Nazarene University	39.5	40.1
207C1 East Moline	WDLN-FM	LIC IL	256.2 75.1	147.38 BLED19791219AA	41 32 52.1 90 28 30.4	100.000 152	89.4 354	59.7 The Moody Bible Institute	51.9	78.3
208B DeKalb	WNIJ	LIC IL	307.2 127.1	25.67 BLED19891011KA	42 00 55.1 89 00 07.3	50.000 128	5.3 380	47.3 Northern Illinois University	14.2	-22.0
209B Kankakee	WONU	LIC IL	137.1 317.7	108.62 BLED19860908KA	41 09 24.1 87 52 16.1	35.000 126	4.9 322	45.2 Olivet Nazarene University	96.5	63.1

**I.F.:**

None

**Technical Exhibit**

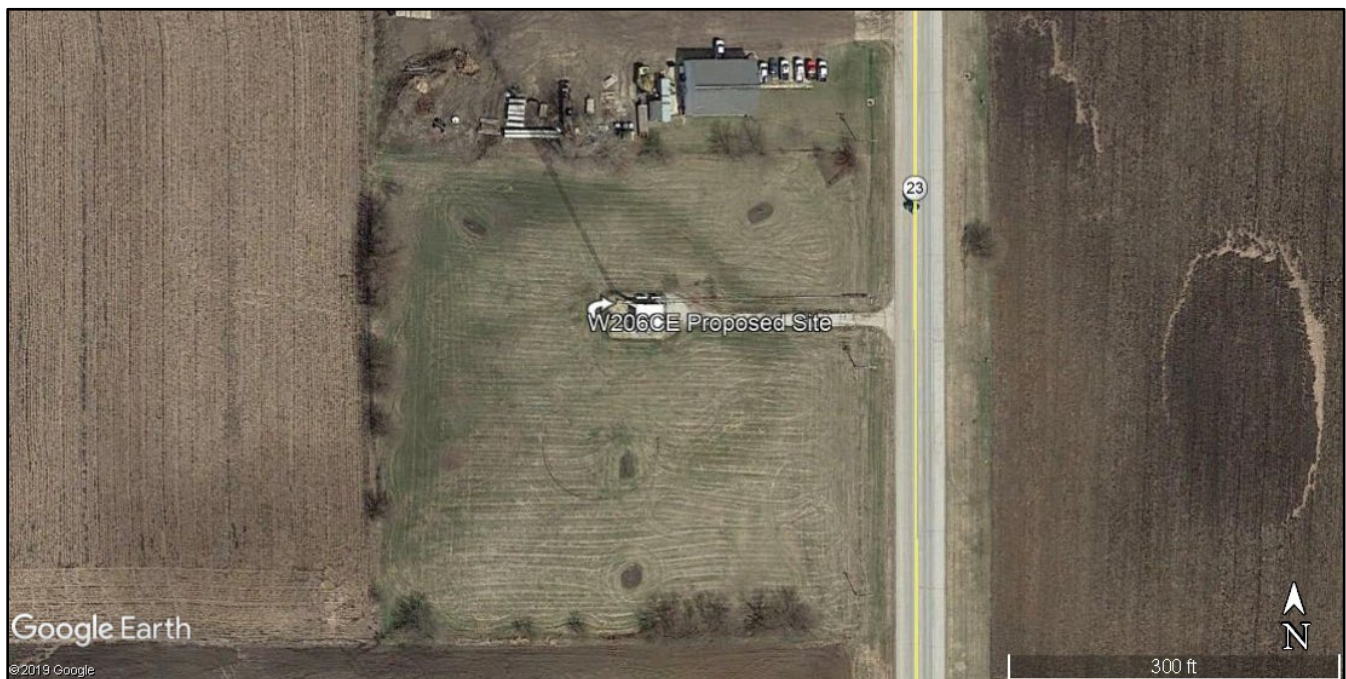
**Allocation Study**

W206CE as proposed is located within the protected contour of the following station:

**WNIJ (LIC), CH 208B, DeKalb, IL**

WNIJ signal strength at the W206CE site	72.4 dBu
W206CE interference contour	112.4 dBu
Distance to W206CE interference contour	73.6 meters

W206CE's interference contour to WNIJ will extend out 73.6 meters. W206CE's antenna will be 80.6 meters above ground level, resulting in the interference contour not reaching the ground by a margin of at least 7.0 meters. Therefore based on the showing of no population within the area of predicted interference a waiver of Section 74.1204(d) is respectfully requested.



**Technical Exhibit**

**CH 6 Protection**

Per Section 74.1205(a) of the Commission's rules, the required study distance for FM Channel 206 is 137 km. There are no TV channel 6 broadcast stations within 137 km of W206CE as proposed, therefore W206CE is in full compliance with TV Channel 6 broadcast station protection requirements.

**Technical Exhibit**

**Environmental Impact & RFR Compliance Statement**

W206CE will be located at an established communications site that is in compliance with all environmental impact requirements.

This minor modification application specifies a move to a new site. W206CE as proposed will operate at an antenna COR AGL height of 80.6 meters with 0.019 kW ERP (H&V, non-da). For a worst case estimation at 2 meters above ground level the RFR is no more than 0.1% of the general population/uncontrolled MPE limit. There are other broadcast facilities on the tower.

Facilities that contribute no more than 5% of the general population/uncontrolled MPE limit at the site comply with the requirements of OET Bulletin No. 65 with no further study. Furthermore, per Section 1.1307(b)(1) Table 1, any Part 74 Subpart L facility with an ERP of 100 watts or less is categorically excluded from environmental evaluation. Therefore W206CE as proposed is in compliance with all RFR requirements.

RFR hazard warning signs are posted at the site and the site has restricted access to only authorized personnel. The applicant certifies that in cooperation with other users of the site all authorized personnel will be protected from RFR exposure in excess of FCC guidelines while accessing any controlled exposure area, including the tower, by either reducing power or ceasing operations.