



Federal Communications Commission
Washington, D.C. 20554

December 12, 2019

In reply refer to: 1800B3-VM

CERTIFIED MAIL – RETURN RECEIPT REQUESTED

Edgewater Broadcasting, Inc.
P.O. Box J
Twin Falls, ID 83303

In re: K273BI, Truckee, CA
Facility ID No. 151607

Request for Response to File No.
0000086357

Dear Licensee:

On October 11, 2019, The Evans Broadcast Company, Inc.(Evans), Licensee of FM Translator Station K273AF, Carson City, Nevada, filed a minor modification application File No. 0000086357, requesting that the license of FM Translator Station K273BI, Truckee, California (Station), licensed to Edgewater Broadcasting, Inc. (Edgewater) be cancelled. In its application, Evans alleges that the Station has been silent in excess of one year, and that an inspection of the site reveals that there is no transmitting equipment. Pursuant to 47 CFR§73.1740, Edgewater is required respond in writing within thirty days of the date of this letter.

The Evans exhibit includes statements and pictures in support of its claim that the Station has been off the air for over a year. The exhibit is attached to this letter. Based on this information, it appears that the Station may have been silent (or failed to operate with authorized facilities) for more than one year. Pursuant to Section 312(g) of the Communications Act, as amended, **if a broadcast station fails to transmit broadcast signals with its authorized facilities for any consecutive 12-month period, then the station license granted for the operation of that broadcast station expires at the end of that period, unless extended or reinstated by Commission action.**

Please respond to the attached exhibit and provide evidence documenting the Station's operational status since November 14, 2018.¹ This evidence must indicate the location, effective radiated power and antenna height above ground level for **all periods of operation** from November 14, 2018, to the present. Also include copies of all leases, personnel records (including payroll records appropriately redacted to protect the privacy of individual employees), engineering records, and station logs, including EAS records, for that period of time. In addition, you must provide copies of all invoices, bills, checks written or received, credit card charges, wire transfers or deposits of funds relating to the Station's operation.² You **must also include**

¹ This is the date of filing of the last assignment of license application for the Station. See File No. BALH-20181114ABA.

² In addition, if the Station uses accounting software to maintain financial records, provide printouts of the data recorded for this period.

pictures of the Station's studio facilities and transmission facilities during this timeframe, and provide exact Station coordinates.

We also note that it is imperative to the safety of air navigation that any prescribed painting and illumination of the Station's tower shall be maintained.³

Licensee must serve a copy of its response to Evans' counsel, cc'd below, and Evans will have an additional 10 days, as calculated in accordance with 47 CFR §1.4 to respond. Failure to respond to this letter within the specified time will result in adverse actions jeopardizing both the Station's license and call letters. If you have any questions concerning the content of this letter, please contact Victoria McCauley, Attorney, by phone (202-418-2136), or e-mail (Victoria.McCauley@fcc.gov).

Sincerely,

 /TH

Albert Shuldiner
Chief, Audio Division
Media Bureau

cc: Aaron Shainis, Esq.

³ See 47 CFR §§ 17.6 and 73.1740(a)(4).

K273BI Cancellation

The instant application is dependent upon the Commission cancelling the license of K273BI, Truckee, CA.

The facility is currently licensed to Edgewater Broadcasting Inc. (Attachment A). However, it is submitted that the station has been silent in excess of one year.

In this regard, attached is a statement from Joel Depaoli, the president of Truckee-Tahoe Radio, LLC, the licensee of KTKE, Truckee, California. (Attachment B). Mr. Depaoli states, *inter alia*, the following:

"As the Owner and Operator of KTKE, the local radio station for the past 3+ years, I would know if there was another local signal or station in the area. I have not heard anything on the frequency of 102.5 FM"

Also attached is a statement of Jerry Evans, President & CEO of Evans Broadcast Company, Inc. (Attachment C). Attached to Mr. Evans statement are pictures of the licensed site and surrounding area for K273BI. Mr. Evans states:

"The pictures reflect that there isn't any sort of transmit antenna. I took photos in the immediate area, the rooftop, and looking across the rooftops of the area where the antenna is supposed to be located. The Google Earth images also show that there isn't a broadcast transmit or receive antenna in the area."

Thus, pursuant to Section 312(g) of the Communications Act of 1934, as amended, the K273BI license is subject to automatic cancellation.

ATTACHMENT A



Station Search Details

[FCC](#) > [Media Bureau](#) > [MB-CDBS](#) > [CDBS Public Access](#) > [Station Search](#)

[Help](#) [site map](#)

Station Search Details

Call Sign:	K273BI
Facility Id:	151607
Primary Station Call Sign:	KPLY
Community of License:	TRUCKEE, CA
Service:	FX
Fac Type:	FM TRANSLATOR
Status:	LICENSED
Status Date:	10/26/2007
Frequency:	102.5
Channel:	273
Digital Status:	
Lic Expir:	12/01/2021
Licensee:	EDGEWATER BROADCASTING, INC.
Address:	P.O. BOX J
Address 2:	
City:	TWIN FALLS
State:	ID
Zip Code:	83303 -
Phone Number:	(888) 533-3551
Engineering Data	View Engineering Data
Call Sign History	View Call Sign History
FRN History	View FRN History
Correspondence Folder	View Correspondence Folder

[FCC Home](#) | [Search](#) | [Updates](#) | [E-Filing](#) | [Initiatives](#) | [For Consumers](#) | [Find People](#)

Please send comments via standard mail to the Federal Communications Commission, Consumer and Governmental Affairs Bureau, 445 12th Street, S.W., Washington, D.C., 20554. Questions can also be answered by calling the FCC's National Call Center, toll free, at 1-888-Call FCC (1-888-225-5322).

Federal Communications
Commission
445 12th Street SW
Washington, DC 20554
[More FCC Contact Information...](#)

Phone: 1-888-CALL-FCC (1-888-225-5322)
TTY: 1-888-TELL-FCC (1-888-835-5322)
Fax: 1-866-418-0232
E- fccinfo@fcc.gov
mail:

- [Privacy Policy](#)
- [Website Policies & Notices](#)
- [Required Browser Plug-ins](#)
- [Freedom of Information Act](#)

ATTACHMENT B

To whom it may concern,

My name is Joel Dapaoli, President of Truckee-Tahoe Radio, LLC, the licensee of KTKE 101.5 FM in Truckee, California.

As the Owner and Operator of KTKE, the local radio station for the past 3 + years I would know if there was another local signal or station in the area. I have not heard anything on the frequency of 102.5 FM.

Respectfully,

Joel Dapaoli

KTKE 101.5 FM

12030 Donner Pass Rd.

Truckee, CA 96161


9/17/19

ATTACHMENT C

EVANS BROADCAST COMPANY, INC.
1755 E. PLUMB LANE #169 • RENO, NV 89502 • 1960 IDAHO STREET • CARSON CITY, NV 89701
OFFICE: 775.884.8000 FAX: 775.882.3961

October 10, 2019

To: Aaron Shainis, Shainis & Peltzman

Fr: Jerry Evans, Evans Broadcast Company, Inc.

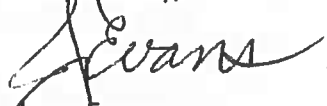
Re: K273B1

Aaron:

Enclosed, please find pictures taken in August of 2018 and on Tuesday, October 8th, 2019 of the exact area and surrounding area of the licensed transmit area for K273B1. The pictures reflect that there isn't any sort of transmit antenna. I took photos in the immediate area, the roof top, and looking across the rooftop(s) of the area where the antenna is supposed to be located. The Google Earth images also show that there isn't a broadcast transmit (or receive) antenna in the area.

As confirmed by a local Truckee radio station owner, this translator has not been on the air -ever- since he has owned KTKE and that has been for several years. I was also made aware of the translator when it was for sale several years ago and at that time it was not on the air. And, just to confirm, it was not on the air in August of 2018 or on Tuesday October 8th, 2019.

Respectfully,



Jerry Evans

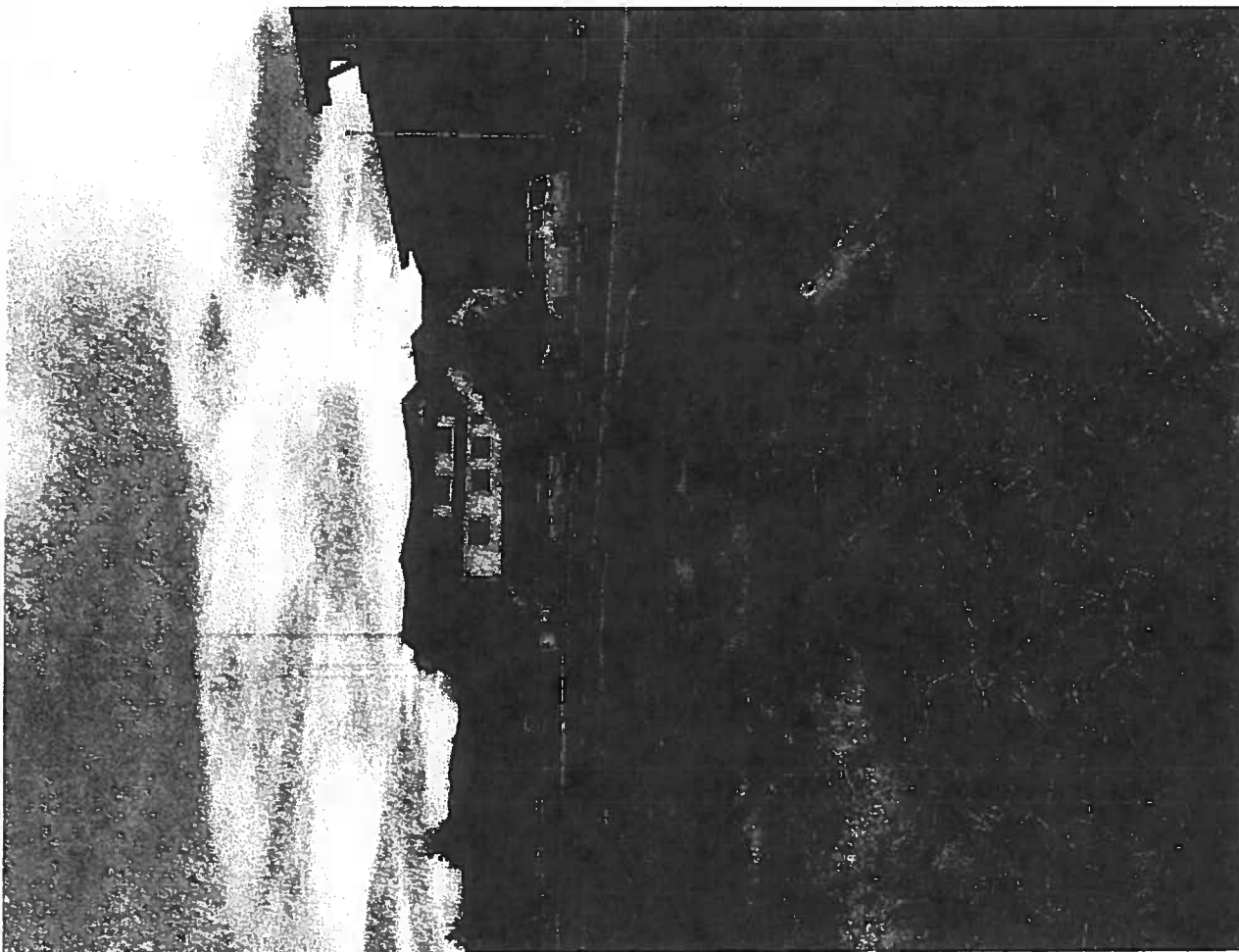
President, C.E.O.

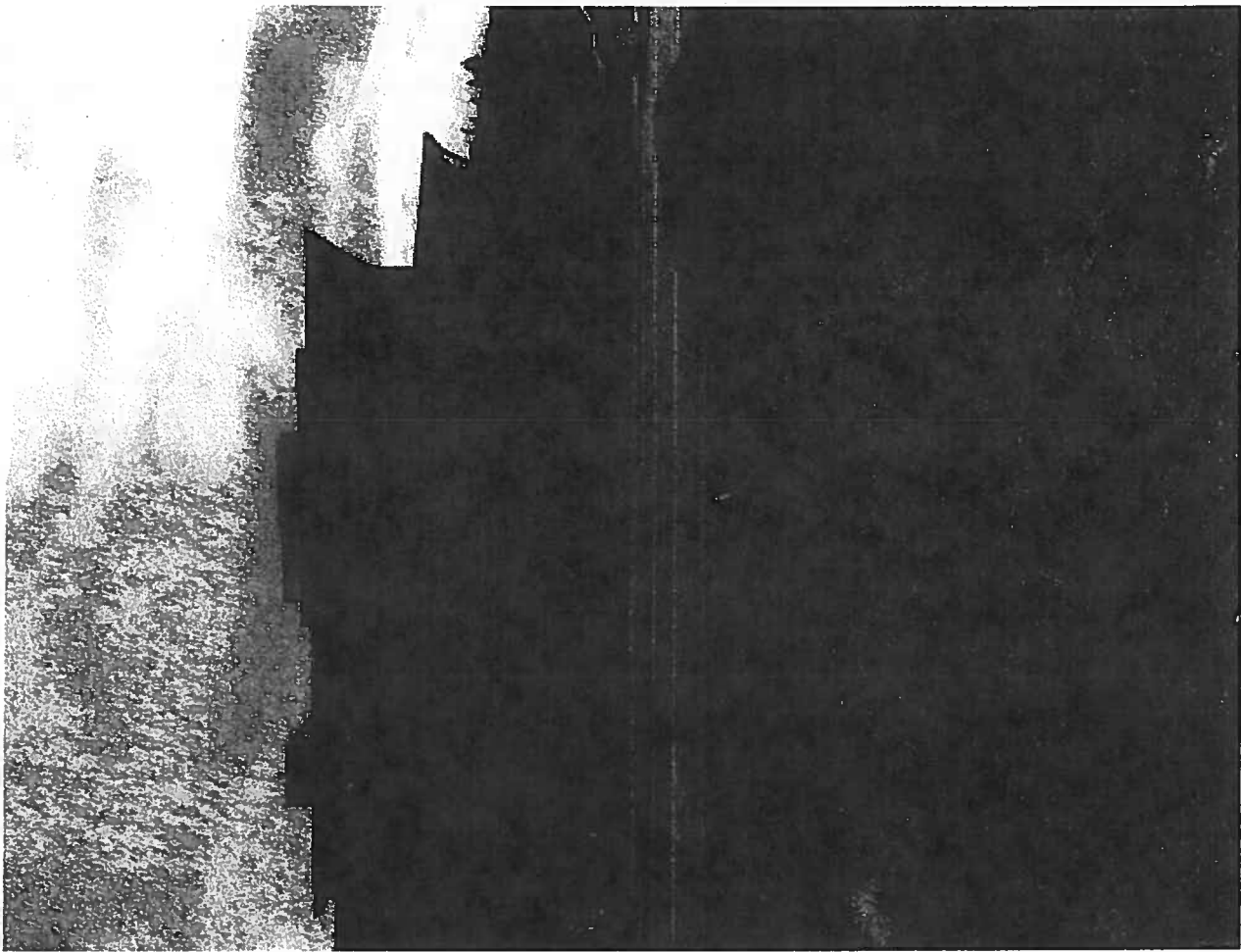
Evans Broadcast Company, Inc.



Aaron Shainis

From: jerryradio991@gmail.com
Sent: Tuesday, October 08, 2019 7:26 PM
To: Bert Goldman; Aaron Shainis
Subject: 102.5

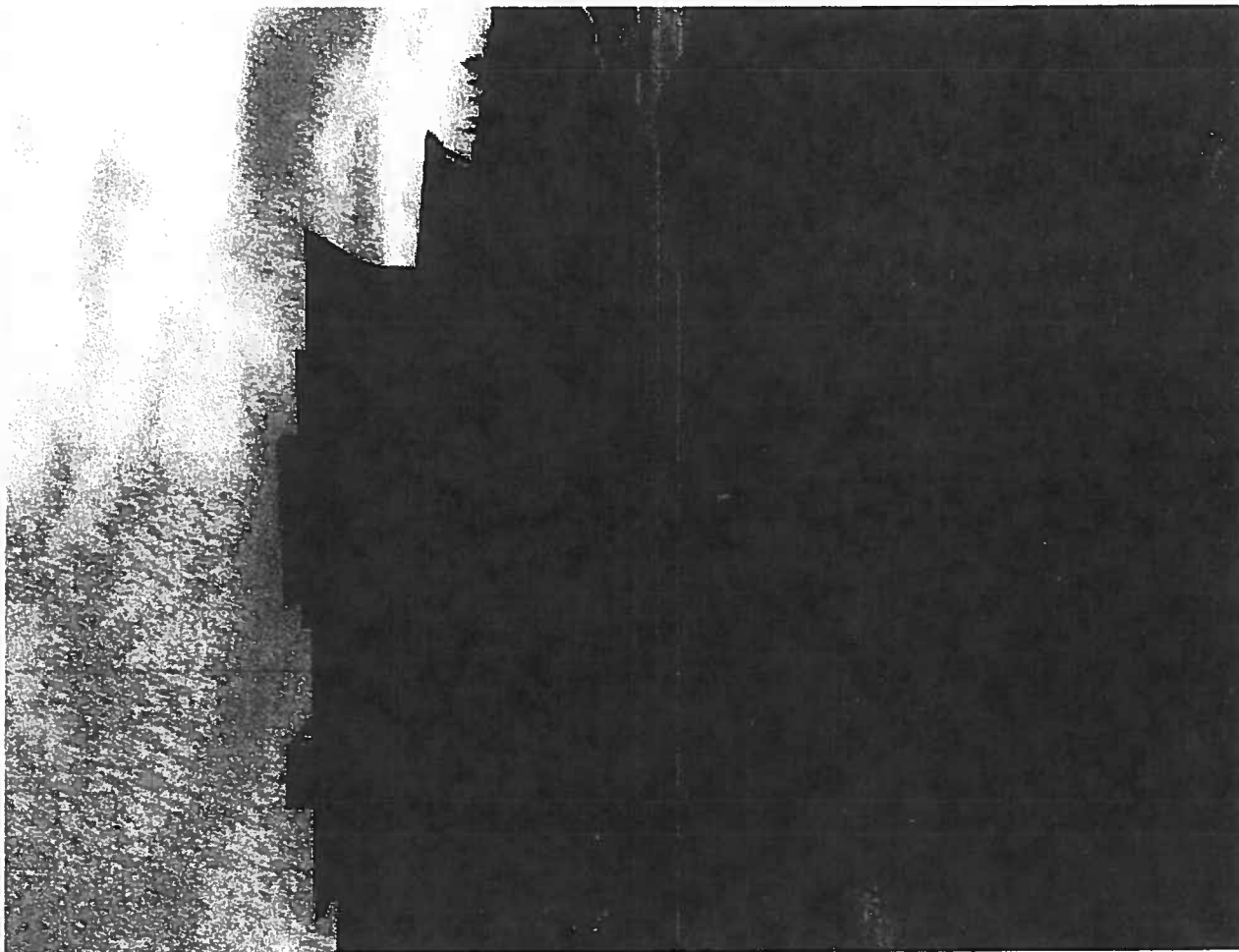


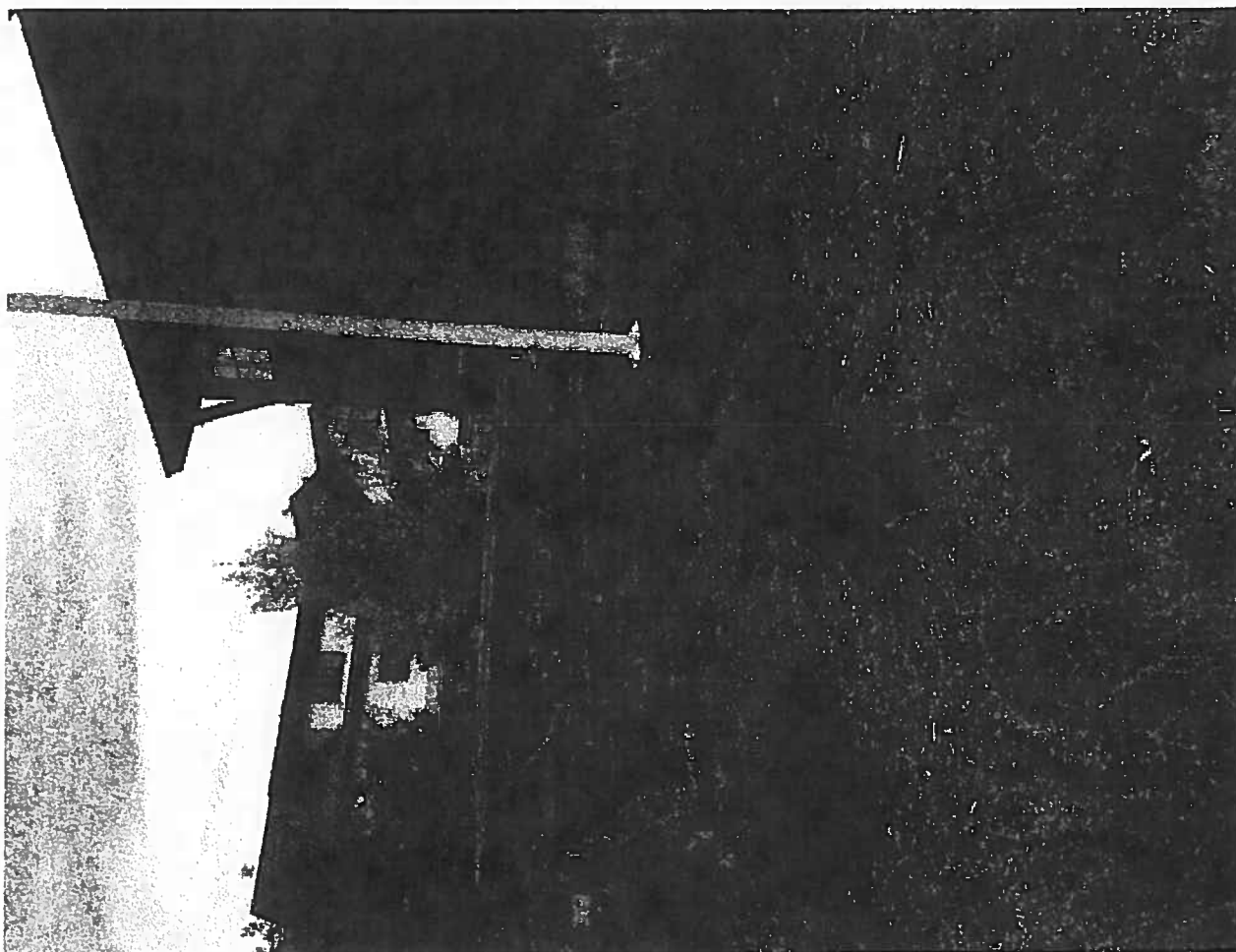


Sent from my time consuming iPhone

Aaron Shainis

From: jerryradio991@gmail.com
Sent: Tuesday, October 08, 2019 7:27 PM
To: Bert Goldman; Aaron Shainis



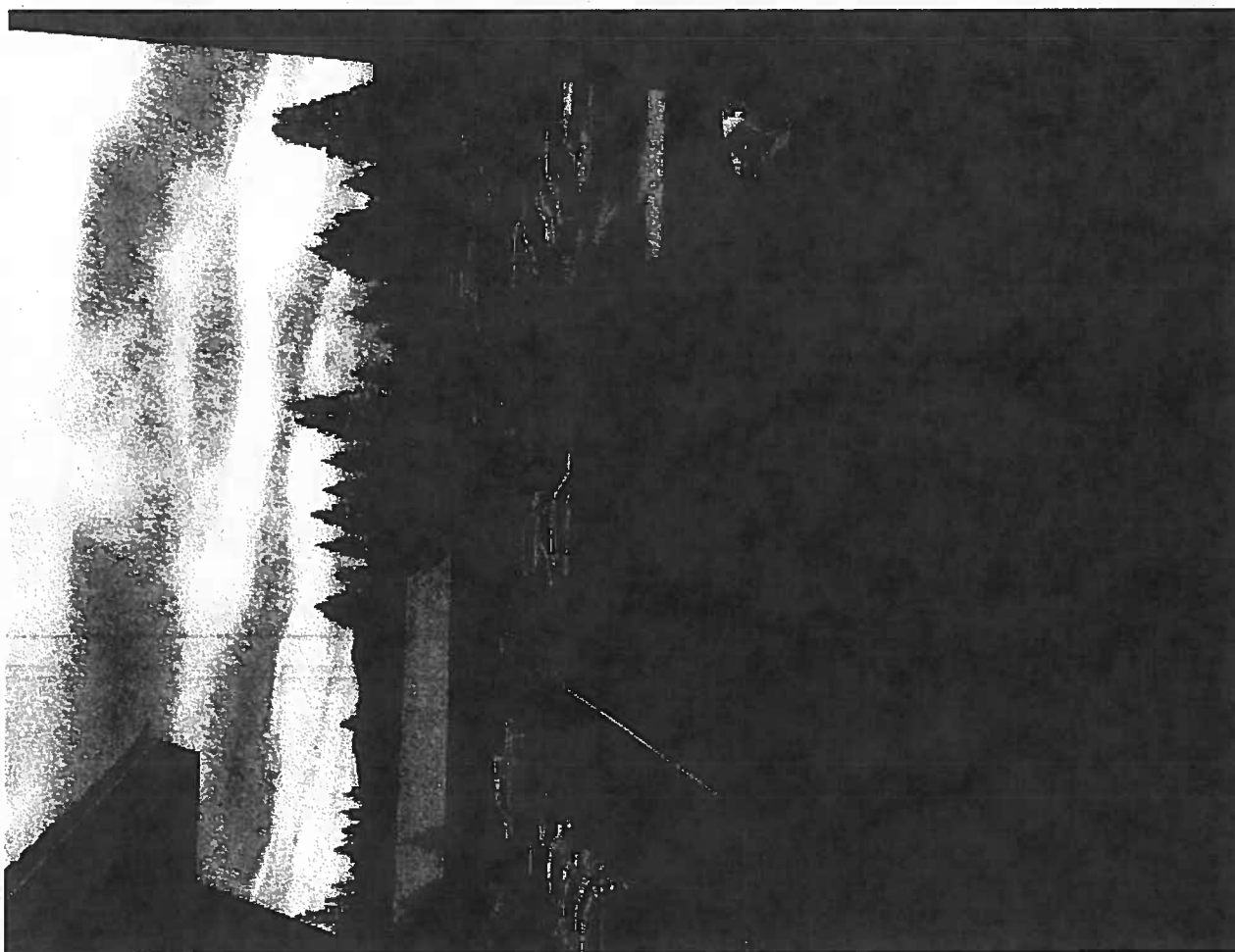


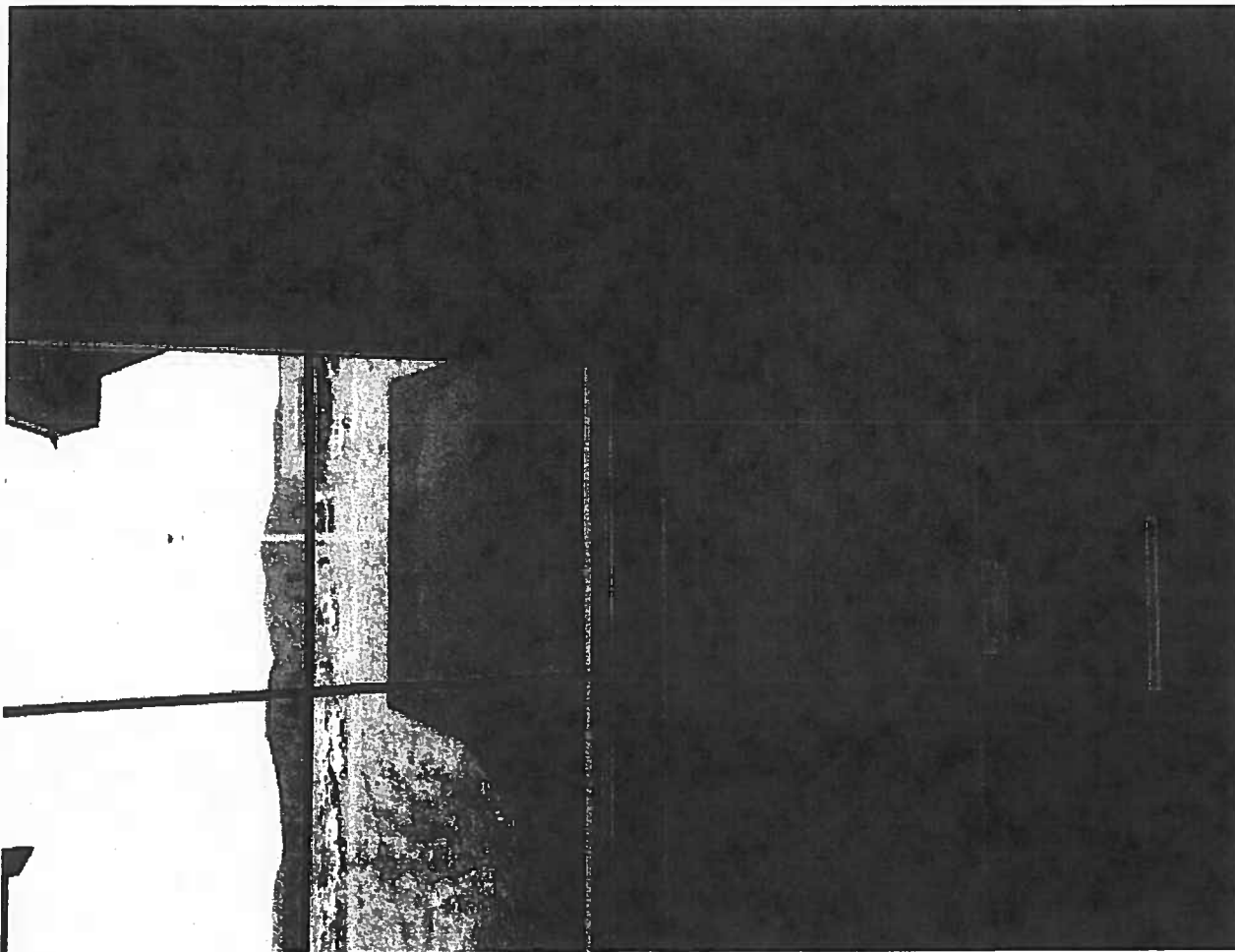
Sent from my time consuming iPhone

Aaron Shainis

From: jerryradio991@gmail.com
Sent: Tuesday, October 08, 2019 7:29 PM
To: Bert Goldman; Aaron Shainis
Subject: 102.5

From the rooftop. West/east. That's a flagpole





Sent from my time consuming iPhone

Aaron Shainis

From: jerryradio991@gmail.com
Sent: Tuesday, October 08, 2019 7:29 PM
To: Bert Goldman; Aaron Shainis



Likemoji Inc.	101
Martis Camp	102
Mountain Concepts	103A
Sherrin Fielder, CPA	104
Marsden Architects	105
Lohontan Community Association	106
Operatives	107/108

SECOND FLOOR

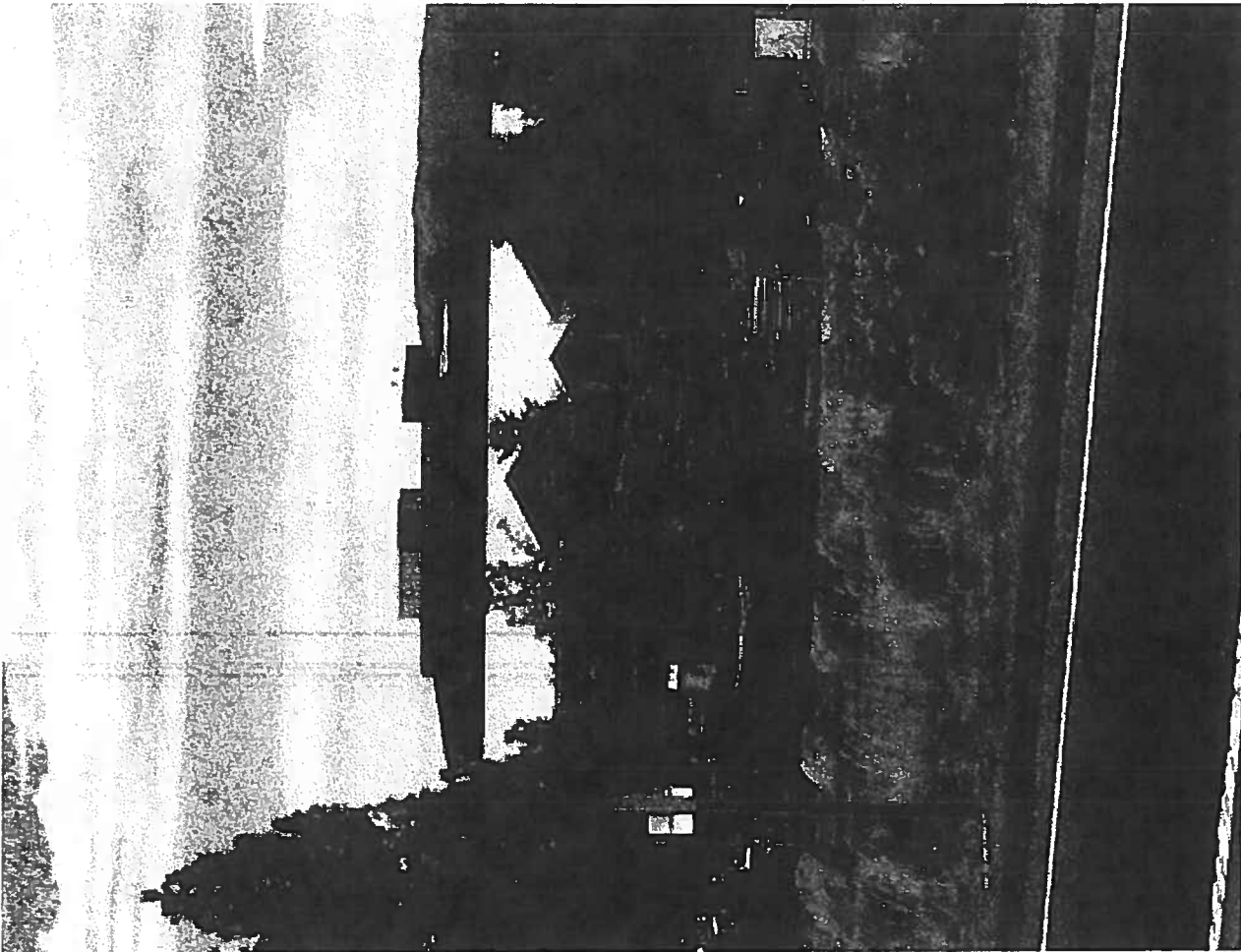
Supreme Lending - Conway Lending Team	201
Truckee Community Insurance Services	202
New Leaders	203
OpenPath Investments, LLC	204/205

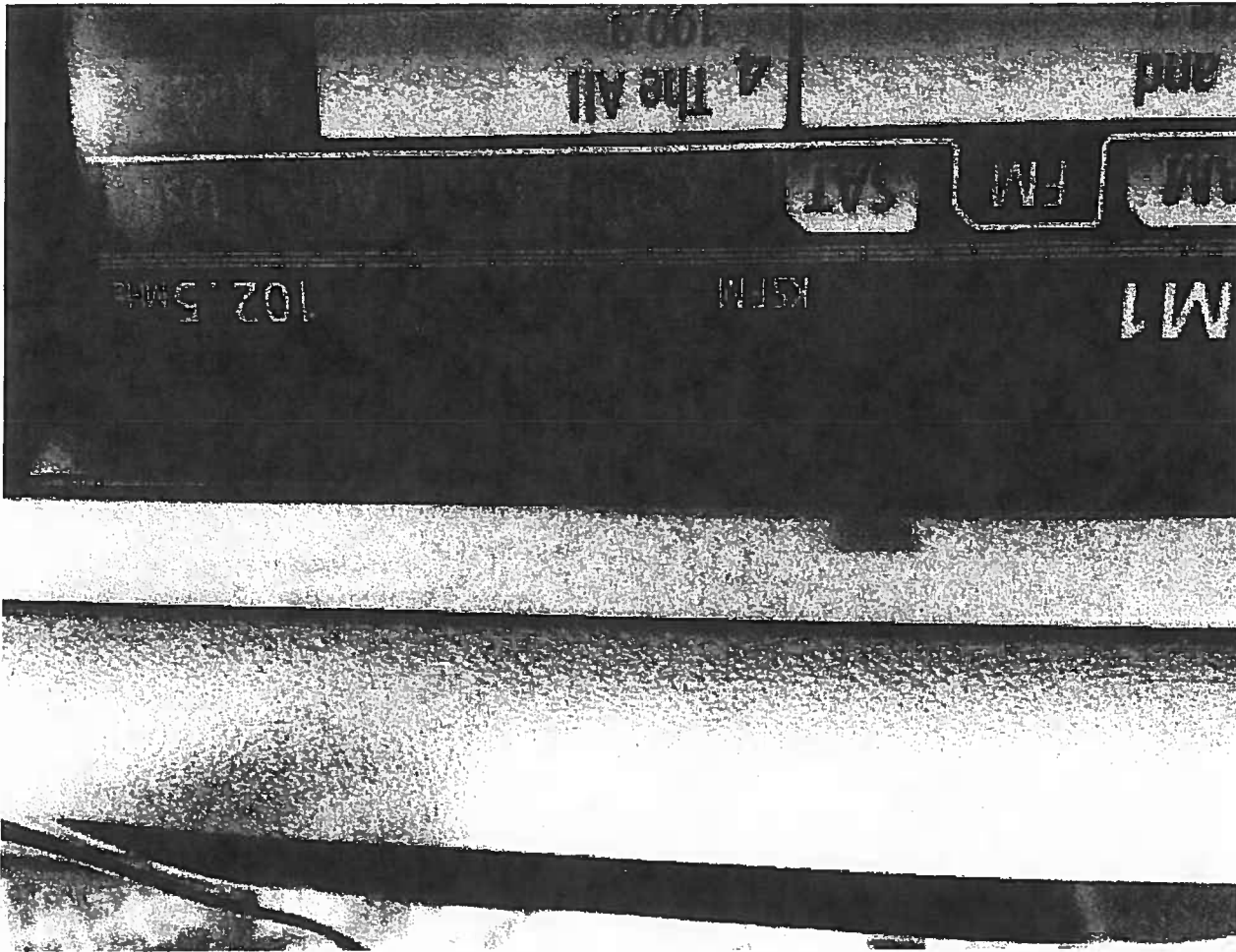
THIRD FLOOR

Lydia T. Perlin, Esq. Conway Community Insurance - Medical	301
Mark David Perlin - InterMountain Development	302
Catherine Marie Interior Design	303
DeLux Landscaping	304/305
Back Entry / NXT LVL	306/307

Aaron Shainis

From: jerryradio991@gmail.com
Sent: Tuesday, October 08, 2019 7:30 PM
To: Bert Goldman; Aaron Shainis
Subject: Across the street looking at rooftop



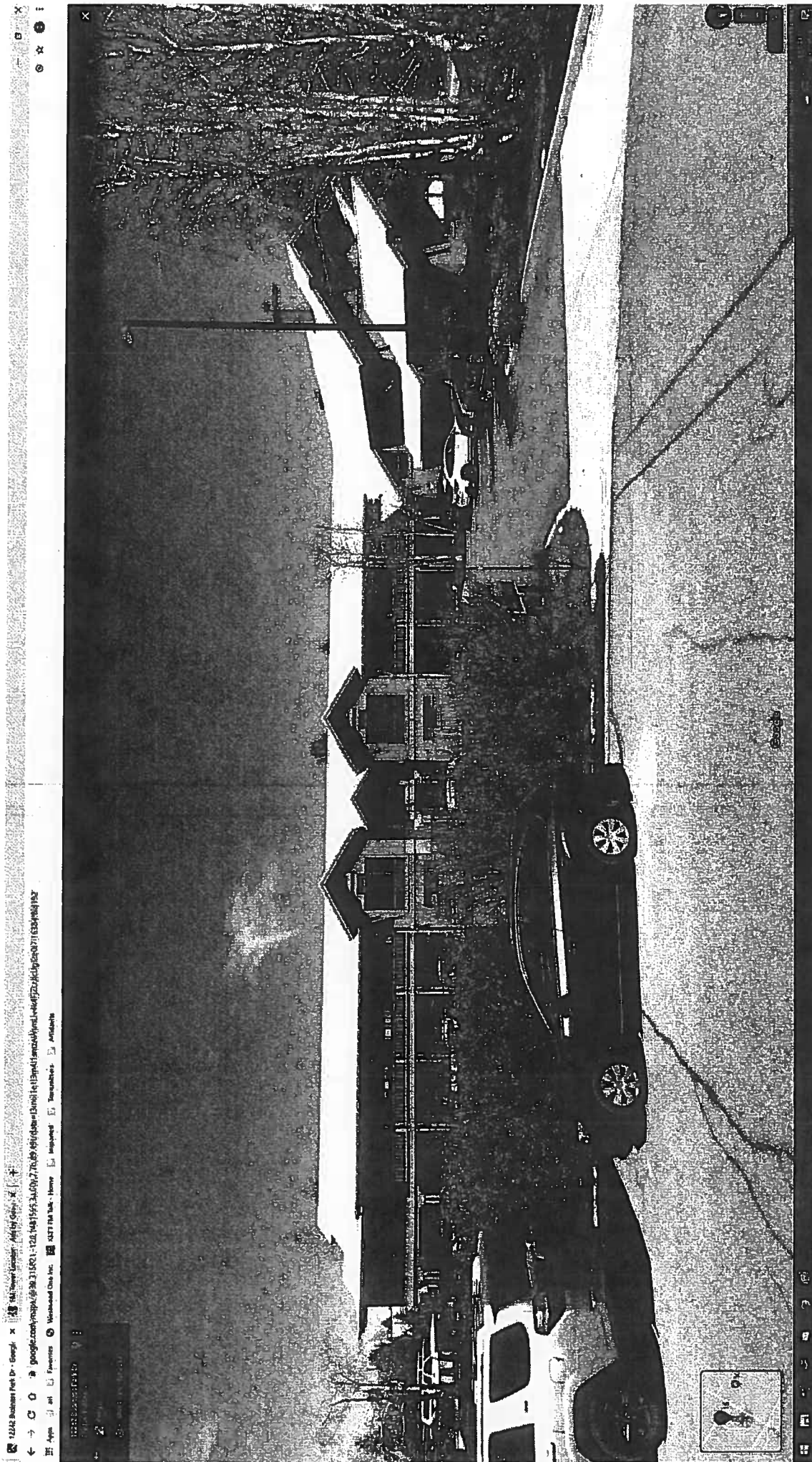


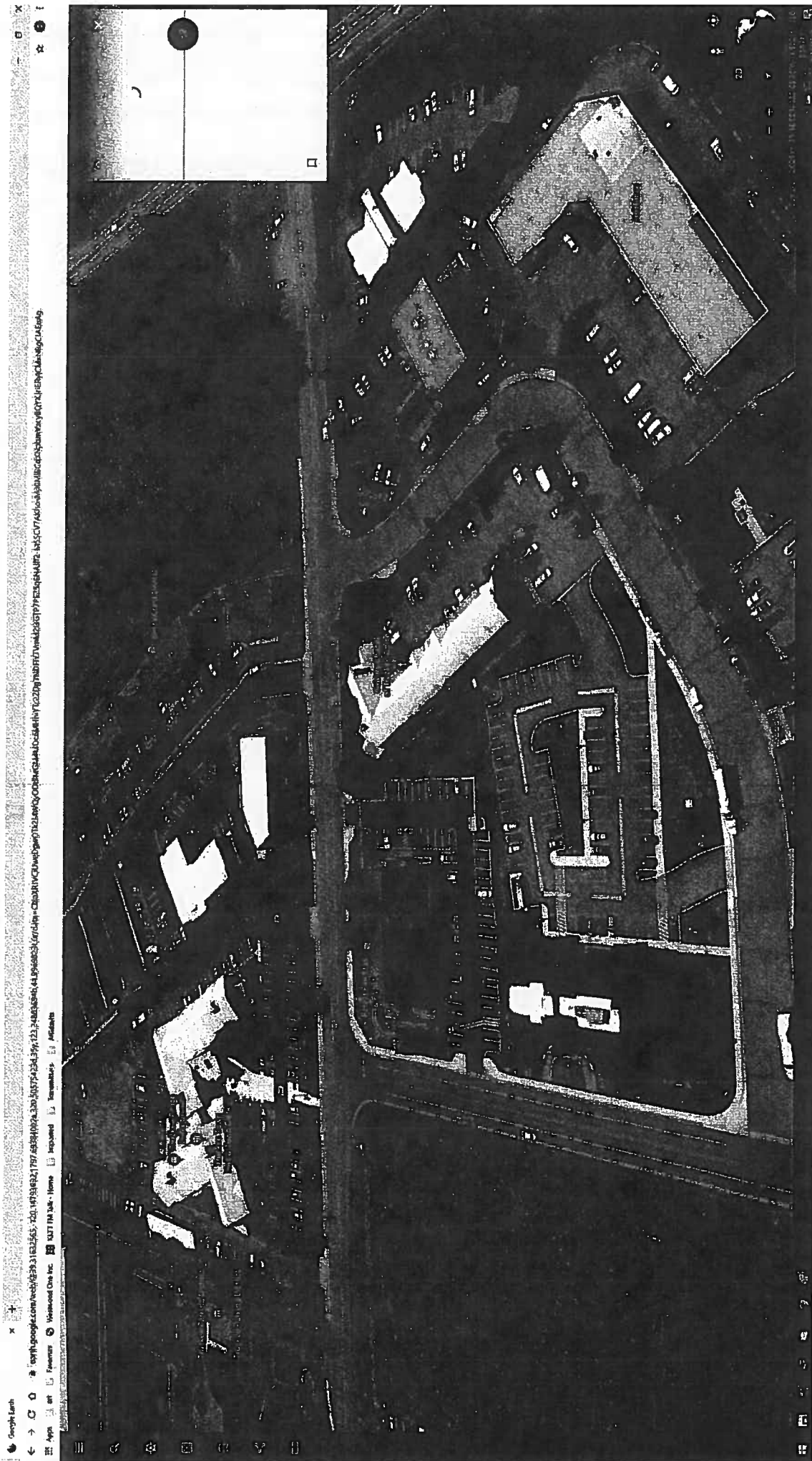
Sent from my time consuming iPhone

To:jerry@evansbroadcast.com

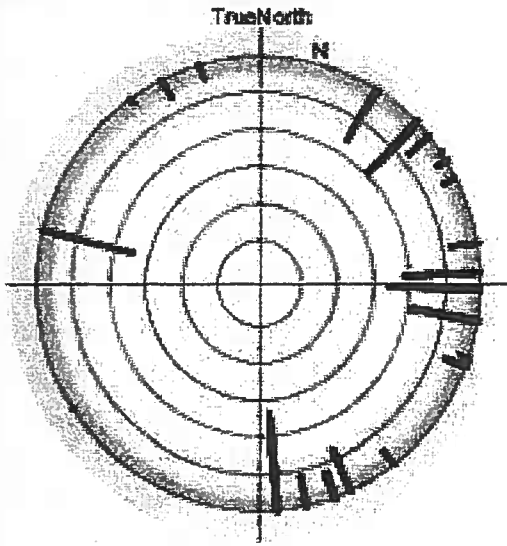
Here are the images for 12242 Business Park Drive in Truckee and the surrounding area.

Craig Moss





FM Channels



Search Criteria

Address: exact
Truckee, CA

www.fmfool.com

Callsign	Channel	Xmit(kw)	Rx(dBm)	Path	Dist(mi)	Azimuth True (Mag)	ft AGL
KTKB	101.5	0.02	-48.3	LOS	5.2	175 (162)	---
KKTO	90.5	38.00	-48.5	2Edge	14.1	92 (78)	---
K201FV	88.1	0.06	-49.5	2Edge	2.9	284 (270)	78.6
KWPL	102.9	39.00	-51.9	2Edge	14.1	92 (78)	---
KRWO	106.9	35.00	-53.1	2Edge	14.1	92 (78)	---
K227AM	93.3	0.01	-53.4	LOS	5.2	175 (162)	---
KDOT	104.5	25.00	-57.5	2Edge	14.1	91 (78)	---
K254AR	98.7	0.01	-57.6	LOS	10.9	87 (74)	---
KQ22-FM	105.7	25.00	-57.8	2Edge	14.1	91 (78)	---
KLEA	96.5	6.10	-58.1	2Edge	14.1	92 (78)	---
K215DS	90.9	0.01	-59.1	LOS	10.9	87 (74)	---
KUNR	88.7	5.80	-59.8	2Edge	14.1	91 (78)	---
KODS	103.7	5.90	-60.0	2Edge	14.1	92 (78)	---
KNTS	91.3	67.00	-61.7	2Edge	23.8	99 (86)	---
KOLC	97.3	87.00	-61.9	2Edge	23.8	100 (87)	---
KLRN	92.9	48.00	-62.3	2Edge	26.1	45 (32)	---
KNEY	95.5	71.00	-63.0	2Edge	24.0	99 (86)	---
KBUL-FM	98.1	72.00	-64.0	2Edge	24.2	99 (86)	---
K286AM	105.1	0.00	-64.8	LOS	5.2	175 (162)	---
KUUB	94.5	50.00	-66.5	2Edge	26.3	45 (32)	---
K219AR	91.7	0.19	-67.4	2Edge	21.2	32 (19)	---
KWFP	92.1	10.50	-68.7	2Edge	26.1	45 (32)	---
KYSA	88.3	14.00	-70.6	2Edge	26.3	45 (32)	---
KTHC-FM	100.1	7.90	-74.2	2Edge	24.0	99 (86)	---
KRLT	93.9	3.00	-75.1	2Edge	26.9	156 (143)	---
KKFT-FM1	99.1	3.14	-76.2	2Edge	26.9	156 (143)	---
KNCJ	89.1	2.85	-77.7	2Edge	26.3	45 (32)	---
KZIQ	93.7	3.60	-77.8	2Edge	26.2	45 (32)	---
KSRN	107.7	0.23	-78.8	2Edge	14.1	91 (78)	---
KIFT	99.1	1.80	-79.5	2Edge	24.0	99 (86)	---
KRVV-FM	102.1	3.50	-79.8	2Edge	26.3	45 (32)	---
K258BN	99.5	0.01	-83.2	2Edge	21.2	32 (19)	---
K220CO	91.9	0.15	-83.9	2Edge	28.6	168 (155)	---
KBBN	100.9	6.00	-84.9	2Edge	19.7	79 (66)	---
KVMY	89.1	0.79	-85.1	2Edge	47.5	50 (36)	---
K211BF	90.1	0.25	-85.2	2Edge	29.3	160 (147)	---
K277BW	103.3	0.00	-86.3	2Edge	22.2	32 (19)	165.7
K245BV	96.9	0.25	-87.0	2Edge	21.8	100 (87)	---
K210AK	89.9	0.04	-87.3	1Edge	11.0	111 (98)	---
K241BK	96.1	0.25	-87.3	2Edge	29.3	160 (147)	---
K268FC	101.7	0.25	-87.6	2Edge	26.1	45 (32)	---
K292EP	106.1	0.09	-87.8	2Edge	13.0	111 (98)	---
K209AN	89.7	0.01	-88.7	2Edge	14.8	334 (321)	199.0
K221AL	92.5	0.25	-89.1	2Edge	26.2	45 (32)	---
K241AK	96.1	0.25	-90.0	2Edge	26.2	45 (32)	---
K207CP	89.3	0.01	-90.5	2Edge	21.7	143 (129)	---
K267AA	101.3	0.04	-90.7	1Edge	13.0	111 (98)	---
KRNO	101.3	1.65	-91.7	2Edge	58.7	62 (49)	---
K200K	93.3	100.00	-92.0	2Edge	81.6	144 (331)	---
K285EQ	104.9	0.14	-92.3	2Edge	26.2	45 (32)	---
K251KS	94.1	0.11	-92.3	2Edge	26.3	45 (32)	---
K200-FM1	101.3	0.23	-92.3	2Edge	43.3	100 (87)	---
K212EA	98.1	0.00	-92.3	2Edge	21.8	100 (87)	---
K201AT	88.1	0.02	-92.3	2Edge	29.3	160 (147)	---
K210AP	89.9	0.04	-92.3	2Edge	29.3	160 (147)	---
K209AN	89.7	0.01	-92.3	2Edge	29.3	160 (147)	---
K207CP	89.3	0.01	-92.3	2Edge	29.3	160 (147)	---
K200-FM1	101.3	0.23	-92.3	2Edge	29.3	160 (147)	---
K209AN	89.7	0.01	-92.3	2Edge	29.3	160 (147)	---
K207CP	89.3	0.01	-92.3	2Edge	29.3	160 (147)	---
K200-FM1	101.3	0.23	-92.3	2Edge	29.3	160 (147)	---
K209AN	89.7	0.01	-92.3	2Edge	29.3	160 (147)	---
K207CP	89.3	0.01	-92.3	2Edge	29.3	160 (147)	---
K200-FM1	101.3	0.23	-92.3	2Edge	29.3	160 (147)	---
K209AN	89.7	0.01	-92.3	2Edge	29.3	160 (147)	---
K207CP	89.3	0.01	-92.3	2Edge	29.3	160 (147)	---
K200-FM1	101.3	0.23	-92.3	2Edge	29.3	160 (147)	---
K209AN	89.7	0.01	-92.3	2Edge	29.3	160 (147)	---
K207CP	89.3	0.01	-92.3	2Edge	29.3	160 (147)	---
K200-FM1	101.3	0.23	-92.3	2Edge	29.3	160 (147)	---
K209AN	89.7	0.01	-92.3	2Edge	29.3	160 (147)	---
K207CP	89.3	0.01	-92.3	2Edge	29.3	160 (147)	---
K200-FM1	101.3	0.23	-92.3	2Edge	29.3	160 (147)	---
K209AN	89.7	0.01	-92.3	2Edge	29.3	160 (147)	---
K207CP	89.3	0.01	-92.3	2Edge	29.3	160 (147)	---
K200-FM1	101.3	0.23	-92.3	2Edge	29.3	160 (147)	---
K209AN	89.7	0.01	-92.3	2Edge	29.3	160 (147)	---
K207CP	89.3	0.01	-92.3	2Edge	29.3	160 (147)	---
K200-FM1	101.3	0.23	-92.3	2Edge	29.3	160 (147)	---
K209AN	89.7	0.01	-92.3	2Edge	29.3	160 (147)	---
K207CP	89.3	0.01	-92.3	2Edge	29.3	160 (147)	---
K200-FM1	101.3	0.23	-92.3	2Edge	29.3	160 (147)	---
K209AN	89.7	0.01	-92.3	2Edge	29.3	160 (147)	---
K207CP	89.3	0.01	-92.3	2Edge	29.3	160 (147)	---
K200-FM1	101.3	0.23	-92.3	2Edge	29.3	160 (147)	---
K209AN	89.7	0.01	-92.3	2Edge	29.3	160 (147)	---
K207CP	89.3	0.01	-92.3	2Edge	29.3	160 (147)	---
K200-FM1	101.3	0.23	-92.3	2Edge	29.3	160 (147)	---
K209AN	89.7	0.01	-92.3	2Edge	29.3	160 (147)	---
K207CP	89.3	0.01	-92.3	2Edge	29.3	160 (147)	---
K200-FM1	101.3	0.23	-92.3	2Edge	29.3	160 (147)	---
K209AN	89.7	0.01	-92.3	2Edge	29.3	160 (147)	---
K207CP	89.3	0.01	-92.3	2Edge	29.3	160 (147)	---
K200-FM1	101.3	0.23	-92.3	2Edge	29.3	160 (147)	---
K209AN	89.7	0.01	-92.3	2Edge	29.3	160 (147)	---
K207CP	89.3	0.01	-92.3	2Edge	29.3	160 (147)	---
K200-FM1	101.3	0.23	-92.3	2Edge	29.3	160 (147)	---
K209AN	89.7	0.01	-92.3	2Edge	29.3	160 (147)	---
K207CP	89.3	0.01	-92.3	2Edge	29.3	160 (147)	---
K200-FM1	101.3	0.23	-92.3	2Edge	29.3	160 (147)	---
K209AN	89.7	0.01	-92.3	2Edge	29.3	160 (147)	---
K207CP	89.3	0.01	-92.3	2Edge	29.3	160 (147)	---
K200-FM1	101.3	0.23	-92.3	2Edge	29.3	160 (147)	---
K209AN	89.7	0.01	-92.3	2Edge	29.3	160 (147)	---
K207CP	89.3	0.01	-92.3	2Edge	29.3	160 (147)	---
K200-FM1	101.3	0.23	-92.3	2Edge	29.3	160 (147)	---
K209AN	89.7	0.01	-92.3	2Edge	29.3	160 (147)	---
K207CP	89.3	0.01	-92.3	2Edge	29.3	160 (147)	---
K200-FM1	101.3	0.23	-92.3	2Edge	29.3	160 (147)	---
K209AN	89.7	0.01	-92.3	2Edge	29.3	160 (147)	---
K207CP	89.3	0.01	-92.3	2Edge	29.3	160 (147)	---
K200-FM1	101.3	0.23	-92.3	2Edge	29.3	160 (147)	---
K209AN	89.7	0.01	-92.3	2Edge	29.3	160 (147)	---
K207CP	89.3	0.01	-92.3	2Edge	29.3	160 (147)	---
K200-FM1	101.3	0.23	-92.3	2Edge	29.3	160 (147)	---
K209AN	89.7	0.01	-92.3	2Edge	29.3	160 (147)	---
K207CP	89.3	0.01	-92.3	2Edge	29.3	160 (147)	---
K200-FM1	101.3	0.23	-92.3	2Edge	29.3	160 (147)	---
K209AN	89.7	0.01	-92.3	2Edge	29.3	160 (147)	---
K207CP	89.3	0.01	-92.3	2Edge	29.3	160 (147)	---
K200-FM1	101.3	0.23	-92.3	2Edge	29.3	160 (147)	---
K209AN	89.7	0.01	-92.3	2Edge	29.3	160 (147)	---
K207CP	89.3	0.01	-92.3	2Edge	29.3	160 (147)	---
K200-FM1	101.3	0.23	-92.3	2Edge	29.3	160 (147)	---
K209AN	89.7	0.01	-92.3	2Edge	29.3	160 (147)	---
K207CP	89.3	0.01	-92.3	2Edge	29.3	160 (147)	---
K200-FM1	101.3	0.23	-92.3	2Edge	29.3	160 (147)	---
K209AN	89.7	0.01	-92.3	2Edge	29.3	160 (147)	---
K207CP	89.3	0.01	-92.3	2Edge	29.3	160 (147)	---
K200-FM1	101.3	0.23	-92.3	2Edge	29.3	160 (147)	---
K209AN	89.7	0.01	-92.3	2Edge	29.3	160 (147)	---
K207CP	89.3	0.01	-92.3	2Edge	29.3	160 (147)	---
K200-FM1	101.3	0.23	-92.3	2Edge	29.3	160 (147)	---
K209AN	89.7	0.01	-92.3	2Edge	29.3	160 (147)	---
K207CP	89.3	0.01	-92.3	2Edge	29.3	160 (147)	---
K200-FM1	101.3	0.23	-92.3	2Edge	29.3	160 (147)	---
K209AN	89.7	0.01	-92.3	2Edge	29.3	160 (147)	---
K207CP	89.3	0.01	-92.3	2Edge	29.3	160 (147)	---
K200-FM1	101.3	0.23	-92.3	2Edge	29.3	160 (147)	---
K209AN	89.7	0.01	-92.3	2Edge	29.3	160 (147)	---
K207CP	89.3	0.01	-92.3	2Edge	29.3	160 (147)	---
K200-FM1	101.3	0.23	-92.3	2Edge	29.3	160 (147)	---
K209AN	89.7	0.01	-92.3	2Edge	29.3	160 (147)	---
K207CP	89.3	0.01	-92.3	2Edge	29.3	160 (147)	---
K200-FM1	101.3	0.23	-92.3	2Edge	29.3	160 (147)	---
K209AN	89.7	0.01	-92.3	2Edge	29.3	160 (147)	---
K207CP	89.3	0.01	-92.3	2Edge	29.3	160 (147)	---
K200-FM1	101.3	0.23	-92.3	2Edge	29.3	160 (147)	---
K209AN	89.7	0.01	-92.3	2Edge	29.3	160 (147)	---
K207CP	89.3	0.01	-92.3	2Edge	29.3	160 (147)	---
K200-FM1	101.3	0.23	-92.3	2Edge	29.3	160 (147)	---
K209AN	89.7	0.01	-92.3	2Edge	29.3	160 (147)	---
K207CP	89.3	0.01	-92.3	2Edge	29.3	160 (147)	---
K200-FM1	101.3	0.23	-92.3	2Edge	29.3	160 (147)	---
K209AN	89.7	0.01	-92.3	2Edge	29.3	160 (147)	---
K207CP	89.3	0.01	-92.3	2Edge	29.3	160 (147)	---
K200-FM1	101.3	0.23	-92.3	2Edge	29.3	160 (147)	---
K209AN	89.7	0.01	-92.3	2Edge	29.3	160 (147)	---
K207CP	89.3	0.01	-92.3	2Edge	29.3	160 (147)	---
K200-FM1	101.3	0.23	-92.3	2Edge	29.3	160 (147)	---
K209AN	89.7						