

## Reasons for Displacement of K33MM-D

A study of predicted interference - received and caused – by the K33MD-D LPTV facility operation on channel 33 was performed using tvstudy v2.2.5, per Commission's Office of Engineering and Technology Bulletin No. 69, *Longley-Rice Methodology for Evaluating TV Coverage and Interference*, February 6, 2004 ("OET-69").

The interference study examined the potential interference caused the by K33MD-D LPTV station to full power or Class A stations and interference received by K33MD-D LPTV station from full power and Class A stations after the repacking process. Non-US records (Mexico) were included in the interference analysis.

A LPTV station is considered displaced due to interference caused if is predicted to *cause* more than 0.5% new interference to the interference-free population of a full power or Class A station. Also, any station that receives more than 2% new interference, in aggregate of the pairwise interference studies, from any combination of repacked full power and Class A stations be considered displaced due to interference received.

The interference study results, summarized in Table 1, show that K33MD-D (BLDTL-20150206AAR) cause new interference that exceed the Commission's interference limit (0.5 percent to full service and Class A stations, and 2.0 percent to LPTV) to XHLRT channel 32 in San Luis Rio Colorado, SO, Mexico, and to a new station allocation Licitación33 channel 33 in San Luis Rio Colorado, SO, Mexico. Also, K33MD-D (BLDTL-20150206AAR) is predicted to receive aggregated new interference in excess of 2.0% (65.82%).

Figure 2 shows the location of the interference caused by K33MD-D (BLDTL-20150206AAR) to XHLRT channel 32 in San Luis Rio Colorado, SO, Mexico, and to a new station allocation Licitación33 channel 33 in San Luis Rio Colorado, SO, Mexico.

# Table I. Interference Analysis Results Summary

Prepared for:

**Broadcast Group, Ltd**

K33MD-D Yuma, Arizona

Facility ID 188113

Ch. 33 (Digital) 15 kW (Non-DA) 395.55 m

Study build station data: LMS TV 2018-03-19

Proposal: K33MD-D D33 LD LIC YUMA, AZ

Facility ID: 188113

Study cell size: 0.50 km

Profile point spacing: 0.50 km

Maximum new IX to full-service and Class A: 0.50%

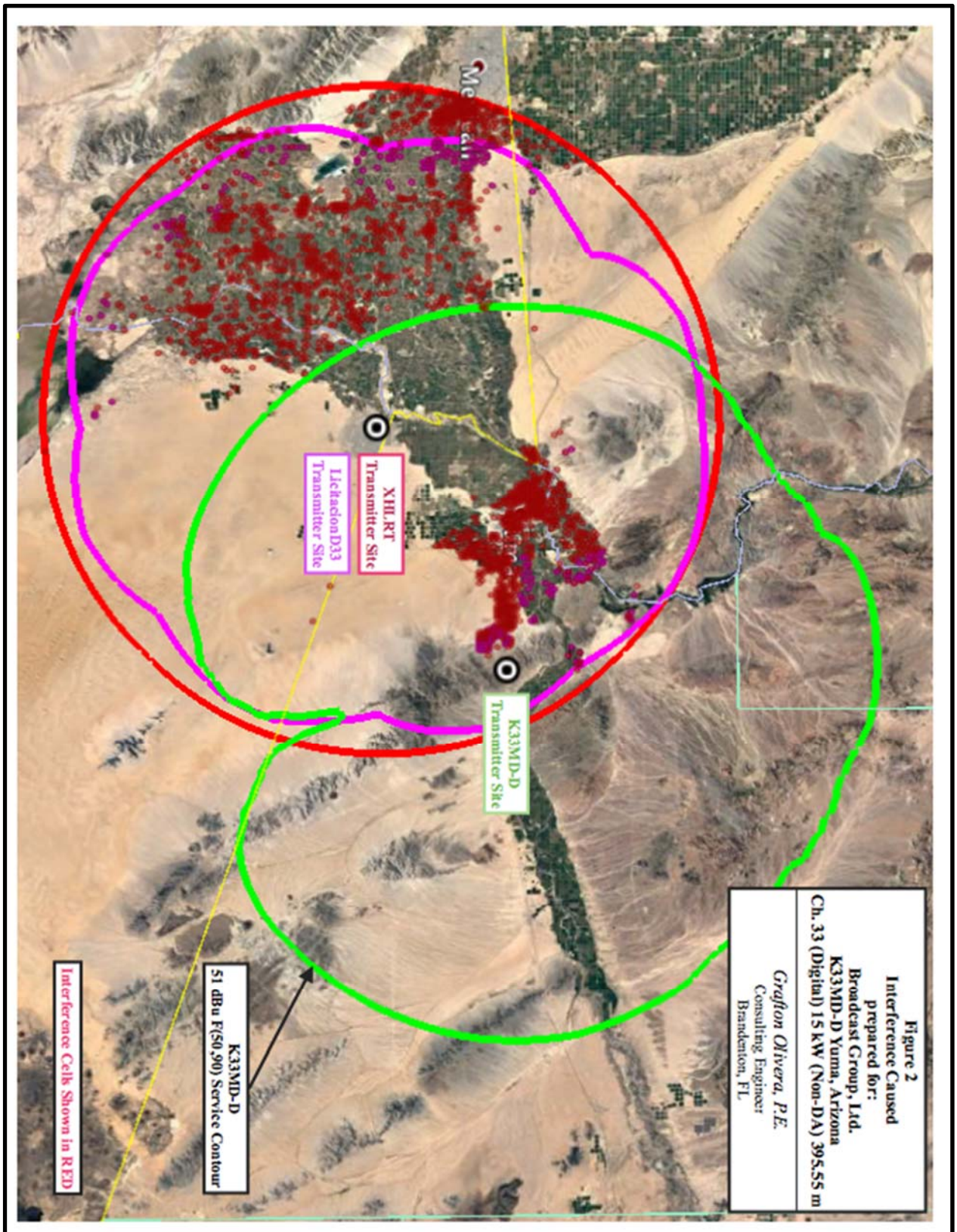
Maximum new IX to LPTV: 2.00%

## Caused Interference:

Channel	Station Affected	City, State	File Number	Caused New IX (%)
32	XHLRT	SAN LUIS RIO COLORAD, SO	BLANKBPFS20160315ABL	4.11 (in Mexico)
33	LICITACIOND33	SAN LUIS RIO COLORAD, SO	BLANKBPFSXXXX0016XXX	39.51 (in Mexico)

## Received interference:

Channel	Station Affected	City, State	File Number	Aggregated New IX (%)
33	K33MD-D	Yuma, Arizona	BLDTL-20150206AAR	65.82



tvstudy v2.2.5 (4uoc83)

Database: localhost, Study: BLDTL20150206AAR #175, Model: Longley-Rice

Start: 2018.04.10 06:09:41

Study created: 2018.04.10 06:09:41

Study build station data: LMS TV 2018-04-06

Proposal: K33MD-D D33 LD LIC YUMA, AZ

File number: BLDTL20150206AAR

Facility ID: 188113

Station data: User record

Record ID: 142

Country: U.S.

Search options:

Non-U.S. records included

Baseline record excluded if station has CP

All records for new LPTV stations excluded

Stations potentially affected by proposal:

IX	Call	Chan	Svc	Status	City, State	File Number	Distance
No	K19CX	N19	TX	LIC	YUMA, AZ	BLTT19941212JC	0.5 km
No	K26FS	N26+	TX	LIC	BLYTHE, CA	BLTT20020311ABG	99.6
No	K29EC	N29z	TX	LIC	BLYTHE, CA	BLTT20020311ABI	99.6
No	K31FE	N31-	TX	LIC	BLYTHE, CA	BLTT20011203AMO	99.6
No	K44CN-D	D33	LD	APP	COTTONWOOD, AZ	BLANK0000034866	303.7
No	K49GE-D	D33	LD	APP	KINGMAN, AZ	BLANK0000040080	270.6
Yes	KTVW-DT	D33	DT	APP	PHOENIX, AZ	BLANK0000035666	224.3
Yes	KTVW-DT	D33	DT	LIC	PHOENIX, AZ	BLC DT20100818ABA	224.3
Yes	KRVD-LD	N33+	TX	LIC	BANNING, CA	BLTTTL20070103ACI	275.4
Yes	K33FD	N33-	TX	LIC	BLYTHE, CA	BLTT20020311ABE	99.6
Yes	K33NK-D	D33	LD	CP	DESERT CENTER, CA	BNPDTL20100514ADF	112.5
Yes	KDFX-CD	D33	DC	CP	INDIO/PALM SPRINGS, CA	BLANK0000034074	235.7
No	KVVB-LP	N33+	TX	LIC	LUCERNE VALLEY, CA	BLTT19910927IB	308.2
Yes	KTBN-TV	D33	DT	LIC	SANTA ANA, CA	BLC DT20091019ABG	386.1
No	K33MB-D	D33	LD	CP	LAUGHLIN, NV	BNPDTT20091112ALF	278.7
No	KESE-LP	N35	TX	LIC	YUMA, AZ	BLTTTL20001117AAJ	21.1
No	KBFY-LP	N41	TX	LIC	FORTUNA, AZ	BLTTTL20020614AAB	0.2

No	XEWT	D32	DT	LIC	TIJUANA, BN	BLANKBPFS20100517ABQ	253.8
Yes	XHLRT	D32	DT	LIC	SAN LUIS RIO COLORAD, SO	BLANKBPFS20160315ABL	47.3
Yes	XHSFN	D33	DT	LIC	SAN FELIPE, BN	BLANKBPFS20151106AAK	189.5
Yes	XHCTTI	D33	DT	LIC	TIJUANA, BN	BLANKBPFS20160524AAY	253.5
No	XHPES	D33	DT	LIC	PUERTO PENASCO, SO	BLANKBPFS20160301ABI	169.7
Yes	LICITACIOND33		DT	LIC	SAN LUIS RIO COLORAD, SO	BLANKBPFSXXXX0016XXX	47.3
Yes	XHBM	D34	DT	LIC	MEXICALI, BN	BLANKBPFS166094XXX	108.5
No	XHAS	D34	DT	LIC	TIJUANA, BN	BLANKBPFS20160302ADV	253.8

No non-directional AM stations found within 0.8 km

No directional AM stations found within 3.2 km

Record parameters as studied:

Channel: D33  
 Mask: Stringent  
 Latitude: 32 40 25.10 N (NAD83)  
 Longitude: 114 20 15.70 W  
 Height AMSL: 524.9 m (Adjusted based on actual ground elevation calculation)  
 HAAT: 0.0 m  
 Peak ERP: 15.0 kW  
 Antenna: Omnidirectional  
 Elev Pattn: Generic  
 Elec Tilt: 0.25

50.6 dBu contour:

Azimuth	ERP	HAAT	Distance
0.0 deg	15.0 kW	453.2 m	63.5 km
45.0	15.0	369.4	59.5
90.0	15.0	458.7	63.7
135.0	15.0	367.9	59.4
180.0	15.0	219.9	51.4
225.0	15.0	395.6	60.7
270.0	15.0	437.7	62.8
315.0	15.0	351.8	58.6

Database HAAT does not agree with computed HAAT

Database HAAT: 0 m    Computed HAAT: 382 m

Distance to Canadian border: 1814.7 km

\*\*Proposal is within coordination distance of Mexican border

Distance to Mexican border: 33.9 km

Conditions at FCC monitoring station: Douglas AZ

Bearing: 105.2 degrees Distance: 459.9 km

Proposal is not within the West Virginia quiet zone area

Conditions at Table Mountain receiving zone:

Bearing: 41.9 degrees Distance: 1158.6 km

Study cell size: 0.50 km

Profile point spacing: 0.50 km

Maximum new IX to full-service and Class A: 0.50%

Maximum new IX to LPTV: 2.00%

-----  
Interference to BLANK0000035666 APP scenario 1

	Call	Chan	Svc	Status	City, State	File Number	Distance
Desired:	KTVW-DT	D33	DT	APP	PHOENIX, AZ	BLANK0000035666	
Undesireds:	K33MD-D	D33	LD	LIC	YUMA, AZ	BLDTL20150206AAR	224.3 km
	KOLD-TV	D32	DT	LIC	TUCSON, AZ	BLCDT20030911AAI	162.1
	KUVE-DT	D34	DT	CP	GREEN VALLEY, AZ	BLANK0000034005	162.0
	XHPES	D33	DT	LIC	PUERTO PENASCO, SO	BLANKBPFS20160301ABI	264.7
	LICITACIOND33	DT	LIC		SAN LUIS RIO COLORAD, SO	BLANKBPFSXXXX0016XXX	271.2

	Service area		Terrain-limited		IX-free, before		IX-free, after		Percent New IX
	33780.0	4,173,986	27511.5	4,157,266	27484.5	4,157,260	27383.3	4,156,823	0.37 0.01
Undesired				Total IX		Unique IX, before		Unique IX, after	
K33MD-D D33 LD LIC			102.9	437			101.2	437	
KOLD-TV D32 DT LIC			2.4	0	0.5	0	0.5	0	
KUVE-DT D34 DT CP			23.4	6	21.4	6	21.4	6	

XHPES D33 DT LIC	0.2	0	0.2	0	0.2	0
LICITACION D33 DT LIC	2.9	0	2.9	0	1.2	0

-----  
Interference to BLCDT20100818ABA LIC scenario 1

	Call	Chan	Svc	Status	City, State	File Number	Distance
Desired:	KTVW-DT	D33	DT	LIC	PHOENIX, AZ	BLCDT20100818ABA	
Undesireds:	K33MD-D	D33	LD	LIC	YUMA, AZ	BLDTL20150206AAR	224.3 km
	KOLD-TV	D32	DT	LIC	TUCSON, AZ	BLCDT20030911AAI	162.1
	KUVE-DT	D34	DT	CP	GREEN VALLEY, AZ	BLANK0000034005	162.0
	LICITACIOND33	DT	LIC		SAN LUIS RIO COLORAD, SO	BLANKBPFSXXXX0016XXX	271.2

Service area	Terrain-limited	IX-free, before	IX-free, after	Percent New IX
32767.6	4,173,160	26697.0	4,154,564	26668.7
		4,154,307	26579.4	4,153,782
				0.33
				0.01

Undesired	Total IX	Unique IX, before	Unique IX, after
K33MD-D D33 LD LIC	90.5	525	89.3
KOLD-TV D32 DT LIC	3.2	0	0.5
KUVE-DT D34 DT CP	25.5	257	22.9
LICITACION D33 DT LIC	2.2	0	2.2

-----  
Interference to BLTTL20070103ACI LIC scenario 1

	Call	Chan	Svc	Status	City, State	File Number	Distance
Desired:	KRVD-LD	N33+	TX	LIC	BANNING, CA	BLTTL20070103ACI	
Undesireds:	K33MD-D	D33	LD	LIC	YUMA, AZ	BLDTL20150206AAR	275.4 km
	K32EM-D	N32	TX	LIC	MORONGO VALLEY, CA	BLTTL19970721JS	24.9
	KBAK-TV	D33	DT	LIC	BAKERSFIELD, CA	BLCDT20060628ABK	226.0
	KDFX-CD	D33	DC	CP	INDIO/PALM SPRINGS, CA	BLANK0000034074	39.8
	KTBN-TV	D33	DT	LIC	SANTA ANA, CA	BLCDT20091019ABG	116.8
	KMEX-DT	D34	DT	APP	LOS ANGELES, CA	BLANK0000035668	117.2
	K34EU	N34-	TX	LIC	MORONGO VALLEY, CA	BLTTL19970721JR	24.9
	XHCTTI	D33	DT	LIC	TIJUANA, BN	BLANKBPFS20160524AAY	171.4
	LICITACIOND33	DT	LIC		SAN LUIS RIO COLORAD, SO	BLANKBPFSXXXX0016XXX	256.8

Service area	Terrain-limited	IX-free, before	IX-free, after	Percent New IX
--------------	-----------------	-----------------	----------------	----------------

328.1	81,707	233.5	33,877	221.7	33,828	221.7	33,828	0.00	0.00
-------	--------	-------	--------	-------	--------	-------	--------	------	------

Undesired			Total IX	Unique IX, before	Unique IX, after
K33MD-D D33 LD LIC	0.7		0		0.0 0
KBAK-TV D33 DT LIC	0.2		0	0.0 0	0.0 0
KDFX-CD D33 DC CP	3.6		47	0.7 47	0.7 47
KTBN-TV D33 DT LIC	4.6		2	2.2 0	2.2 0
XHCTTI D33 DT LIC	1.0		2	0.5 0	0.5 0
LICITACION D33 DT LIC	7.4		0	4.1 0	3.8 0

-----  
Interference to BLTT20020311ABE LIC scenario 1

	Call	Chan	Svc	Status	City, State	File Number	Distance
Desired:	K33FD	N33-	TX	LIC	BLYTHE, CA	BLTT20020311ABE	
Undesireds:	K33MD-D	D33	LD	LIC	YUMA, AZ	BLDTL20150206AAR	99.6 km
	KTVW-DT	D33	DT	APP	PHOENIX, AZ	BLANK0000035666	213.6
	K33NK-D	D33	LD	CP	DESERT CENTER, CA	BNPDTL20100514ADF	39.6
	LICITACIOND33	DT	LIC		SAN LUIS RIO COLORAD, SO	BLANKBPFSXXXX0016XXX	128.5

	Service area	Terrain-limited	IX-free, before	IX-free, after	Percent New IX
1444.9	13,410	1355.8	12,588	1036.4	5.47 0.17

Undesired			Total IX	Unique IX, before	Unique IX, after
K33MD-D D33 LD LIC	61.4		6		59.9 6
K33NK-D D33 LD CP	257.5		9,022	257.5 9,022	257.3 9,022
LICITACION D33 DT LIC	1.9		0	1.9 0	0.7 0

-----  
Interference to BNPDTL20100514ADF CP scenario 1

	Call	Chan	Svc	Status	City, State	File Number	Distance
Desired:	K33NK-D	D33	LD	CP	DESERT CENTER, CA	BNPDTL20100514ADF	
Undesireds:	K33MD-D	D33	LD	LIC	YUMA, AZ	BLDTL20150206AAR	112.5 km
	KTVW-DT	D33	DT	APP	PHOENIX, AZ	BLANK0000035666	253.2
	K33FD	N33-	TX	LIC	BLYTHE, CA	BLTT20020311ABE	39.6

	Service area	Terrain-limited	IX-free, before	IX-free, after	Percent New IX
--	--------------	-----------------	-----------------	----------------	----------------



80.6	1,023	79.4	1,023	12.8	0	12.5	0	1.89	0.00
Undesired		Total IX		Unique IX, before		Unique IX, after			
K33MD-D D33 LD LIC	1.7	0				0.2 0			
K33FD N33- TX LIC	66.6	1,023		66.6 1,023		65.2 1,023			

-----  
Interference to BLANK0000034074 CP scenario 1

	Call	Chan	Svc	Status	City, State	File Number	Distance		
Desired:	KDFX-CD	D33	DC	CP	INDIO/PALM SPRINGS, CA	BLANK0000034074			
Undesireds:	K33MD-D	D33	LD	LIC	YUMA, AZ	BLDTL20150206AAR	235.7 km		
	KBAK-TV	D33	DT	LIC	BAKERSFIELD, CA	BLCDT20060628ABK	264.5		
	KTBN-TV	D33	DT	LIC	SANTA ANA, CA	BLCDT20091019ABG	155.2		
	XHCTTI	D33	DT	LIC	TIJUANA, BN	BLANKBPFS20160524AAY	161.1		
	LICITACIOND33	DT	LIC		SAN LUIS RIO COLORAD, SO	BLANKBPFSXXXX0016XXX	218.2		
-----									
	Service area	Terrain-limited		IX-free, before		IX-free, after		Percent New IX	
7178.5	625,596	5412.5		452,535		5340.2 443,945		0.05 0.00	

Undesired		Total IX		Unique IX, before		Unique IX, after	
K33MD-D D33 LD LIC	5.5	0				2.4 0	
KBAK-TV D33 DT LIC	0.7	0		0.0 0		0.0 0	
KTBN-TV D33 DT LIC	57.8	8,585		54.4 8,585		54.4 8,585	
XHCTTI D33 DT LIC	3.6	5		1.4 5		1.4 5	
LICITACION D33 DT LIC	11.8	0		10.4 0		8.2 0	

-----  
Interference to BLCDT20091019ABG LIC scenario 1

	Call	Chan	Svc	Status	City, State	File Number	Distance
Desired:	KTBN-TV	D33	DT	LIC	SANTA ANA, CA	BLCDT20091019ABG	
Undesireds:	K33MD-D	D33	LD	LIC	YUMA, AZ	BLDTL20150206AAR	386.1 km
	KNLA-CD	D32	DC	CP	LOS ANGELES, CA	BLANK0000034575	1.2
	KBAK-TV	D33	DT	LIC	BAKERSFIELD, CA	BLCDT20060628ABK	144.8
	KDFX-CD	D33	DC	CP	INDIO/PALM SPRINGS, CA	BLANK0000034074	155.2
	KMEX-DT	D34	DT	APP	LOS ANGELES, CA	BLANK0000035668	0.5
	XEWT	D32	DT	LIC	TIJUANA, BN	BLANKBPFS20100517ABQ	213.7

XHCTTI	D33	DT	LIC	TIJUANA, BN	BLANKBPFS20160524AAY	213.2
XHAS	D34	DT	LIC	TIJUANA, BN	BLANKBPFS20160302ADV	213.4

Service area		Terrain-limited		IX-free, before		IX-free, after		Percent New IX
40709.6	17,791,719	35412.8	16,477,250	33779.8	15,964,318	33779.1	15,964,318	0.00 0.00

Undesired			Total IX		Unique IX, before		Unique IX, after
K33MD-D D33 LD LIC	1.0		0			0.7	0
KNLA-CD D32 DC CP	58.5		36,649	34.4	35,123	34.4	35,123
KBAK-TV D33 DT LIC	85.3		22,899	43.6	19,653	43.6	19,653
KDFX-CD D33 DC CP	9.6		5,706	9.1	5,706	8.9	5,706
KMEX-DT D34 DT APP	170.2		113,843	144.9	112,304	144.9	112,304
XEWT D32 DT LIC	10.4		1,173	1.0	220	1.0	220
XHCTTI D33 DT LIC	1376.3		338,359	1322.3	333,863	1322.3	333,863
XHAS D34 DT LIC	9.5		435	2.2	73	2.2	73

-----  
Interference to BLCDT20091019ABG LIC scenario 2

	Call	Chan	Svc	Status	City, State	File Number	Distance
Desired:	KTBN-TV	D33	DT	LIC	SANTA ANA, CA	BLCDT20091019ABG	
Undesireds:	K33MD-D	D33	LD	LIC	YUMA, AZ	BLDTL20150206AAR	386.1 km
	KNLA-CD	D32	DC	CP	LOS ANGELES, CA	BLANK0000034575	1.2
	KBAK-TV	D33	DT	LIC	BAKERSFIELD, CA	BLCDT20060628ABK	144.8
	KDFX-CD	D33	DC	CP	INDIO/PALM SPRINGS, CA	BLANK0000034074	155.2
	KMEX-DT	D34	DT	LIC	LOS ANGELES, CA	BLCDT20121203ASI	0.5
	XEWT	D32	DT	LIC	TIJUANA, BN	BLANKBPFS20100517ABQ	213.7
	XHCTTI	D33	DT	LIC	TIJUANA, BN	BLANKBPFS20160524AAY	213.2
	XHAS	D34	DT	LIC	TIJUANA, BN	BLANKBPFS20160302ADV	213.4

Service area		Terrain-limited		IX-free, before		IX-free, after		Percent New IX
40709.6	17,791,719	35412.8	16,477,250	33819.7	16,004,595	33819.0	16,004,595	0.00 0.00

Undesired			Total IX		Unique IX, before		Unique IX, after
K33MD-D D33 LD LIC	1.0		0			0.7	0
KNLA-CD D32 DC CP	58.5		36,649	35.7	35,123	35.7	35,123
KBAK-TV D33 DT LIC	85.3		22,899	43.8	19,653	43.8	19,653
KDFX-CD D33 DC CP	9.6		5,706	9.1	5,706	8.9	5,706
KMEX-DT D34 DT LIC	127.3		73,425	105.0	72,027	105.0	72,027

XEWT D32 DT LIC	10.4	1,173	1.0	220	1.0	220
XHCTTI D33 DT LIC	1376.3	338,359	1323.1	334,004	1323.1	334,004
XHAS D34 DT LIC	9.5	435	2.2	73	2.2	73

-----

Interference to BLANKBPFS20160315ABL LIC scenario 1

\*\*IX: 4.11% interference caused

Desired:	Call	Chan	Svc	Status	City, State	File Number	Distance		
	XHLRT	D32	DT	LIC	SAN LUIS RIO COLORAD, SO	BLANKBPFS20160315ABL			
Undesireds:	K33MD-D	D33	LD	LIC	YUMA, AZ	BLDTL20150206AAR	47.3 km		
	KMCC	D32	DD	LIC	LAUGHLIN, NV	BLCDT20131118BCD	356.1		
Service area		Terrain-limited		IX-free, before		IX-free, after		Percent New IX	
3658.3	191,690	3392.8	191,498	3392.8	191,498	3161.3	181,825	6.82	5.05 (in U.S.)
5265.0	324,147	5256.9	324,147	5256.9	324,147	4505.0	310,836	14.30	4.11
Undesired		Total IX		Unique IX, before		Unique IX, after		(in U.S.)	
K33MD-D D33 LD LIC	231.5	9,673				231.5	9,673		
K33MD-D D33 LD LIC	751.8	13,311				751.8	13,311		

-----

Interference to BLANKBPFS20151106AAK LIC scenario 1

Desired:	Call	Chan	Svc	Status	City, State	File Number	Distance		
	XHSFN	D33	DT	LIC	SAN FELIPE, BN	BLANKBPFS20151106AAK			
Undesireds:	K33MD-D	D33	LD	LIC	YUMA, AZ	BLDTL20150206AAR	189.5 km		
	XHPES	D33	DT	LIC	PUERTO PENASCO, SO	BLANKBPFS20160301ABI	127.3		
	LICITACIOND33	DT	LIC		SAN LUIS RIO COLORAD, SO	BLANKBPFSXXXX0016XXX	161.2		
Service area		Terrain-limited		IX-free, before		IX-free, after		Percent New IX	
6283.6	18,188	5000.0	18,148	4768.0	18,135	4676.7	18,135	1.91	0.00
Undesired		Total IX		Unique IX, before		Unique IX, after			
K33MD-D D33 LD LIC	228.9	7				91.3	0		
XHPES D33 DT LIC	37.2	0	25.1	0		10.9	0		
LICITACION D33 DT LIC	207.0	13	194.8	13		83.3	6		

-----  
Interference to BLANKBPFS20160524AAY LIC scenario 1

Desired:	Call	Chan	Svc	Status	City, State	File Number	Distance
	XHCTTI	D33	DT	LIC	TIJUANA, BN	BLANKBPFS20160524AAY	
Undesireds:	K33MD-D	D33	LD	LIC	YUMA, AZ	BLDTL20150206AAR	253.5 km
	KTBN-TV	D33	DT	LIC	SANTA ANA, CA	BLCDT20091019ABG	213.2
	XEWT	D32	DT	LIC	TIJUANA, BN	BLANKBPFS20100517ABQ	0.7
	LICITACIOND	D33	DT	LIC	SAN LUIS RIO COLORAD, SO	BLANKBPFSXXXX0016XXX	211.4
	XHAS	D34	DT	LIC	TIJUANA, BN	BLANKBPFS20160302ADV	0.4
	Service area	Terrain-limited		IX-free, before		IX-free, after	Percent New IX
10533.2	2,989,307	9818.3	2,873,516	6512.8	2,632,701	6505.7 2,632,640	0.11 0.00 (in
U.S.)							
10070.7	1,758,976	9234.6	1,734,441	8543.6	1,712,530	8543.6 1,712,530	0.00 0.00
Undesired				Total IX	Unique IX, before	Unique IX, after	
K33MD-D D33 LD LIC				17.5	115	7.1 61	(in U.S.)
K33MD-D D33 LD LIC				1.7	0	0.0 0	
KTBN-TV D33 DT LIC				3264.6	238,084	3257.6 237,484	(in U.S.)
KTBN-TV D33 DT LIC				682.3	21,911	664.3 21,911	
XEWT D32 DT LIC				13.4	442	9.7 106	(in U.S.)
XEWT D32 DT LIC				23.6	0	7.1 0	
LICITACION D33 DT LIC				13.6	71	10.7 54	(in U.S.)
LICITACION D33 DT LIC				1.2	0	0.0 0	
XHAS D34 DT LIC				23.1	2,888	18.7 2,501	(in U.S.)
XHAS D34 DT LIC				2.0	0	1.7 0	

-----  
Interference to BLANKBPFSXXXX0016XXX LIC scenario 1

\*\*IX: 39.51% interference caused

Desired:	Call	Chan	Svc	Status	City, State	File Number	Distance
	LICITACIOND	D33	DT	LIC	SAN LUIS RIO COLORAD, SO	BLANKBPFSXXXX0016XXX	
Undesireds:	K33MD-D	D33	LD	LIC	YUMA, AZ	BLDTL20150206AAR	47.3 km
	KTVW-DT	D33	DT	APP	PHOENIX, AZ	BLANK0000035666	271.2
	KDFX-CD	D33	DC	CP	INDIO/PALM SPRINGS, CA	BLANK0000034074	218.2

XHSFN	D33	DT	LIC	SAN FELIPE, BN	BLANKBPFS20151106AAK	161.2
XHBM	D34	DT	LIC	MEXICALI, BN	BLANKBPFS166094XXX	68.5

Service area	Terrain-limited	IX-free, before	IX-free, after	Percent New IX
4314.7 192,099	3952.9 191,617	3781.1 191,504	2038.8 63,890	46.08 66.64 (in U.S.)
6177.8 484,965	6160.2 484,965	5987.0 334,743	1759.9 202,484	70.61 39.51

Undesired	Total IX	Unique IX, before	Unique IX, after
K33MD-D D33 LD LIC 1901.2	127,725	1742.3 127,614 (in U.S.)	
K33MD-D D33 LD LIC 4394.2	282,415	4227.1 132,259	
KDFX-CD D33 DC CP 10.0	0 6.3 0	1.2 0 (in U.S.)	
KDFX-CD D33 DC CP 1.5	0 0.0 0	0.0 0	
XHSFN D33 DT LIC 5.6	0 5.6 0	2.4 0 (in U.S.)	
XHSFN D33 DT LIC 4.4	0 2.9 0	2.0 0	
XHBM D34 DT LIC 159.9	113 156.2 113	8.8 2 (in U.S.)	
XHBM D34 DT LIC 168.8	150,222 168.8 150,222	3.4 66	

-----  
Interference to BLANKBPFS166094XXX LIC scenario 1

Call	Chan	Svc	Status	City, State	File Number	Distance
Desired: XHBM	D34	DT	LIC	MEXICALI, BN	BLANKBPFS166094XXX	
Undesireds: K33MD-D	D33	LD	LIC	YUMA, AZ	BLDTL20150206AAR	108.5 km
KMEX-DT	D34	DT	APP	LOS ANGELES, CA	BLANK0000035668	298.7
LICITACIOND33	DT	LIC		SAN LUIS RIO COLORAD, SO	BLANKBPFSXXXX0016XXX	68.5
XHAS	D34	DT	LIC	TIJUANA, BN	BLANKBPFS20160302ADV	145.3

Service area	Terrain-limited	IX-free, before	IX-free, after	Percent New IX
6371.3 184,589	6204.6 184,578	6128.6 165,348	6014.8 165,057	1.86 0.18 (in U.S.)
7130.4 973,998	5256.1 971,408	5156.9 928,474	5099.6 927,397	1.11 0.12

Undesired	Total IX	Unique IX, before	Unique IX, after
K33MD-D D33 LD LIC 150.9	970	113.8 291 (in U.S.)	
K33MD-D D33 LD LIC 78.8	1,089	57.3 1,077	
KMEX-DT D34 DT APP 14.1	0 14.1 0	14.1 0 (in U.S.)	
KMEX-DT D34 DT APP 3.7	0 2.7 0	2.7 0	
LICITACION D33 DT LIC 61.1	19,230 61.1 19,230	24.2 18,551 (in U.S.)	

LICITACION D33 DT LIC	94.8	42,934	94.1	42,934	73.3	42,922	
XHAS D34 DT LIC	0.7	0	0.7	0	0.5	0	(in U.S.)
XHAS D34 DT LIC	2.4	0	0.7	0	0.7	0	

-----  
Interference to BLANKBPFS166094XXX LIC scenario 2

Desired:	Call	Chan	Svc	Status	City, State	File Number	Distance
	XHBM	D34	DT	LIC	MEXICALI, BN	BLANKBPFS166094XXX	
Undesireds:	K33MD-D	D33	LD	LIC	YUMA, AZ	BLDTL20150206AAR	108.5 km
	KMEX-DT	D34	DT	LIC	LOS ANGELES, CA	BLCDT20121203ASI	298.7
	LICITACIOND33	DT	LIC		SAN LUIS RIO COLORAD, SO	BLANKBPFSXXXX0016XXX	68.5
	XHAS	D34	DT	LIC	TIJUANA, BN	BLANKBPFS20160302ADV	145.3
	Service area			Terrain-limited	IX-free, before	IX-free, after	Percent New IX
6371.3	184,589	6204.6		184,578	6137.4	165,348	1.85 0.18 (in
U.S.)							
7130.4	973,998	5256.1		971,408	5158.6	928,474	1.11 0.12
Undesired				Total IX	Unique IX, before	Unique IX, after	
K33MD-D D33 LD LIC	150.9			970		113.8 291	(in U.S.)
K33MD-D D33 LD LIC	78.8			1,089		57.3 1,077	
KMEX-DT D34 DT LIC	5.3			0	5.3 0	5.3 0	(in U.S.)
KMEX-DT D34 DT LIC	2.0			0	1.0 0	1.0 0	
LICITACION D33 DT LIC	61.1			19,230	61.1 19,230	24.2 18,551	(in U.S.)
LICITACION D33 DT LIC	94.8			42,934	94.1 42,934	73.3 42,922	
XHAS D34 DT LIC	0.7			0	0.7 0	0.5 0	(in U.S.)
XHAS D34 DT LIC	2.4			0	0.7 0	0.7 0	

-----  
Interference to proposal scenario 1  
65.82% interference received

Desired:	Call	Chan	Svc	Status	City, State	File Number	Distance
	K33MD-D	D33	LD	LIC	YUMA, AZ	BLDTL20150206AAR	
Undesireds:	KTVW-DT	D33	DT	APP	PHOENIX, AZ	BLANK0000035666	224.3 km
	K33FD	N33-	TX	LIC	BLYTHE, CA	BLTT20020311ABE	99.6
	KDFX-CD	D33	DC	CP	INDIO/PALM SPRINGS, CA	BLANK0000034074	235.7

XHLRT	D32	DT	LIC	SAN LUIS RIO COLORAD, SO	BLANKBPFS20160315ABL	47.3
XHSFN	D33	DT	LIC	SAN FELIPE, BN	BLANKBPFS20151106AAK	189.5
XHPES	D33	DT	LIC	PUERTO PENASCO, SO	BLANKBPFS20160301ABI	169.7
LICITACIOND33	DT	LIC		SAN LUIS RIO COLORAD, SO	BLANKBPFSXXXX0016XXX	47.3

Service area	Terrain-limited	IX-free	Percent IX
9413.5	198,211	8186.1	198,145
6627.9	67,730	19.04	65.82
1806.4	200,154	1774.1	200,154
189.6	3,806	89.31	98.10 (in Mexico)

Undesired	Total IX	Unique IX	Prcnt Unique IX
KTVW-DT D33 DT APP	0.5	0	0.00
K33FD N33- TX LIC	27.0	0	0.21
K33FD N33- TX LIC	0.2	0	0.00
KDFX-CD D33 DC CP	1.2	0	0.00
XHLRT D32 DT LIC	0.2	0	0.00
XHSFN D33 DT LIC	0.7	0	0.00
XHPES D33 DT LIC	0.2	0	0.00
LICITACION D33 DT LIC	1540.5	130,415	1529.5
LICITACION D33 DT LIC	1584.4	196,348	1584.2
		130,415	18.68
		196,348	89.30
			98.10 (in Mexico)

-----

Interference to proposal scenario 2

65.82% interference received

Call	Chan	Svc	Status	City, State	File Number	Distance
Desired:	K33MD-D	D33	LD	LIC	YUMA, AZ	BLDTL20150206AAR
Undesireds:	KTVW-DT	D33	DT	LIC	PHOENIX, AZ	BLCDT20100818ABA
	K33FD	N33-	TX	LIC	BLYTHE, CA	BLTT20020311ABE
	KDFX-CD	D33	DC	CP	INDIO/PALM SPRINGS, CA	BLANK0000034074
	XHLRT	D32	DT	LIC	SAN LUIS RIO COLORAD, SO	BLANKBPFS20160315ABL
	XHSFN	D33	DT	LIC	SAN FELIPE, BN	BLANKBPFS20151106AAK
	XHPES	D33	DT	LIC	PUERTO PENASCO, SO	BLANKBPFS20160301ABI
	LICITACIOND33	DT	LIC		SAN LUIS RIO COLORAD, SO	BLANKBPFSXXXX0016XXX

Service area	Terrain-limited	IX-free	Percent IX
9413.5	198,211	8186.1	198,145
6627.9	67,730	19.04	65.82
1806.4	200,154	1774.1	200,154
189.6	3,806	89.31	98.10 (in Mexico)

Undesired	Total IX	Unique IX	Prcnt Unique IX
-----------	----------	-----------	-----------------

KTVW-DT D33 DT LIC	0.5	0	0.0	0	0.00	0.00	
K33FD N33- TX LIC	27.0	0	17.1	0	0.21	0.00	
K33FD N33- TX LIC	0.2	0	0.0	0	0.00	0.00	(in Mexico)
KDFX-CD D33 DC CP	1.2	0	0.0	0	0.00	0.00	
XHLRT D32 DT LIC	0.2	0	0.0	0	0.00	0.00	
XHSFN D33 DT LIC	0.7	0	0.2	0	0.00	0.00	
XHPES D33 DT LIC	0.2	0	0.0	0	0.00	0.00	
LICITACION D33 DT LIC	1540.5	130,415	1529.5	130,415	18.68	65.82	
LICITACION D33 DT LIC	1584.4	196,348	1584.2	196,348	89.30	98.10	(in Mexico)