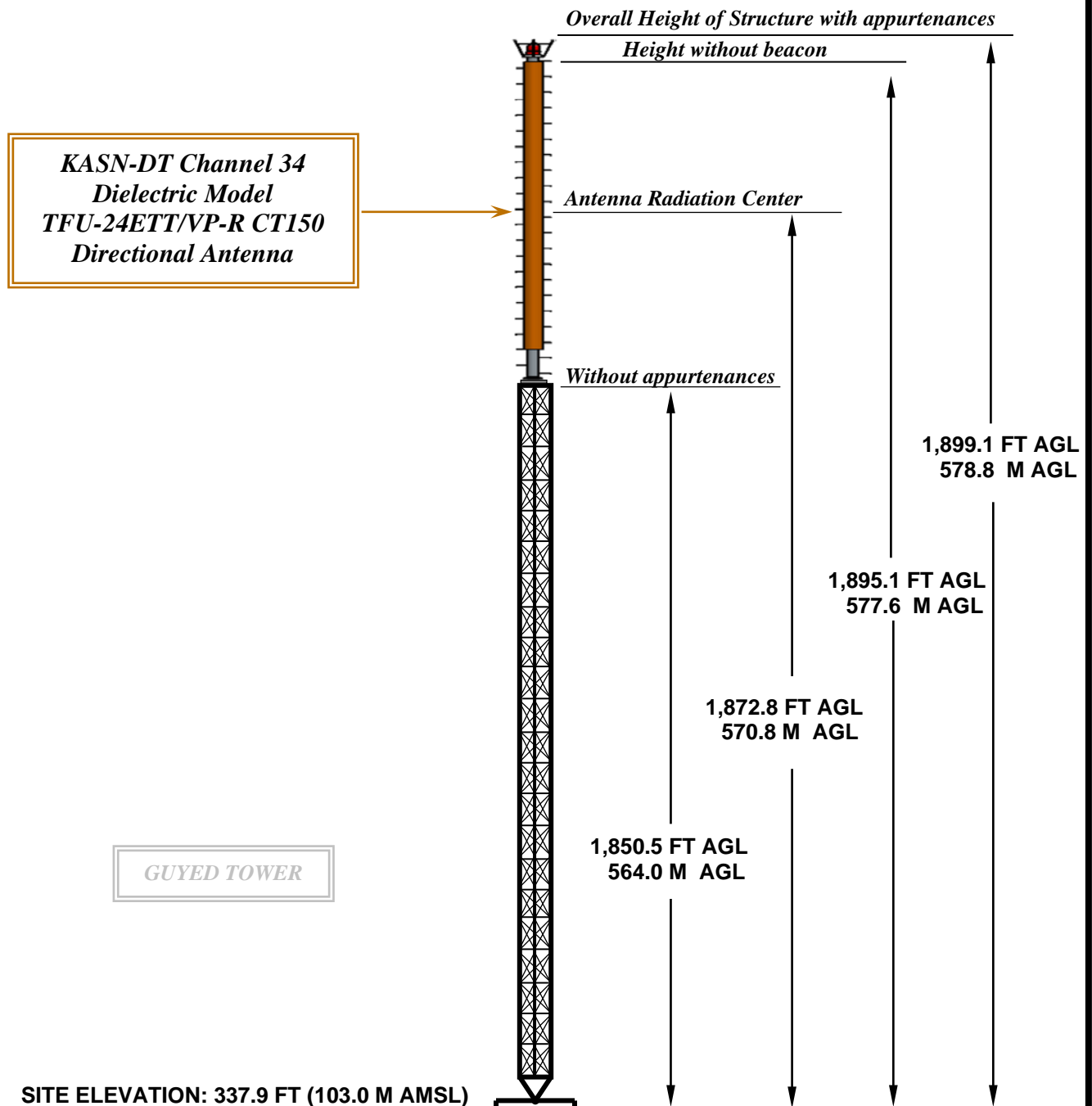


## KASN-DT ELEVATION VIEW



OVERALL HEIGHT AGL:	578.8 M
OVERALL HEIGHT AMSL:	681.8 M
RADIATION CENTER AGL:	570.8 M
RADIATION CENTER AMSL:	673.8 M
RADIATION CENTER HAAT:	589.6 M
AVG OF ALL NON-ODD RADIALS:	84.2 M
SITE HAAT:	18.8 M

### COORDINATES (NAD 83):

N. LATITUDE	34° 26' 31"
W. LONGITUDE	92° 13' 04"

Antenna Structure Registration Number:  
1036554

**NOTE: NOT TO SCALE**

**Kessler and Gehman Associates, Inc.**



Consultants • Broadcast • Wireless  
507 NW 60th Street, Suite C  
Gainesville, FL 32607  
[www.kesslerandgehman.com](http://www.kesslerandgehman.com)

**KASN-DT CHANNEL 34**

*Pine Bluff, AR*

20180215

EXHIBIT 1