

**April 2024
WBLM(FM) Channel 275C0
Portland, Maine
Auxiliary Antenna**

Facilities Proposed

The instant application proposes a new auxiliary (backup) antenna for WBLM, to replace the current auxiliary license. The attached contour map demonstrates that the auxiliary 60 dBu contour is completely contained within the main 60 dBu contour.

The proposed auxiliary operation will be on Channel 275C0 (102.9 MHz) with an effective radiated power of 2.35 kilowatts. Operation is proposed with a 2-element circularly-polarized omni-directional antenna. The antenna will be side-mounted on an existing tower on Hunt Hill, with FCC Antenna Structure Registration Number 1022679.

RF Exposure Calculations

The power density calculations shown below were made using the techniques outlined in OET Bulletin No. 65. "Ground level" calculations in this report have been made at a reference height of 2 meters above ground to provide a worst-case estimate of exposure for persons standing on the ground in the vicinity of the tower. The equation shown below was used to calculate the ground level power density figures from each antenna.

$$S(\mu W / cm^2) = \frac{33.4 \times AdjERP(Watts)}{D^2}$$

Where: *AdjERP(Watts)* is the maximum lobe effective radiated power times the element pattern factor times the array pattern factor.

D is the distance in meters from the center of radiation to the calculation point.

Ground level power densities have been calculated for locations extending from the base of the tower to a distance of 500 meters. Values past this point are increasingly negligible.

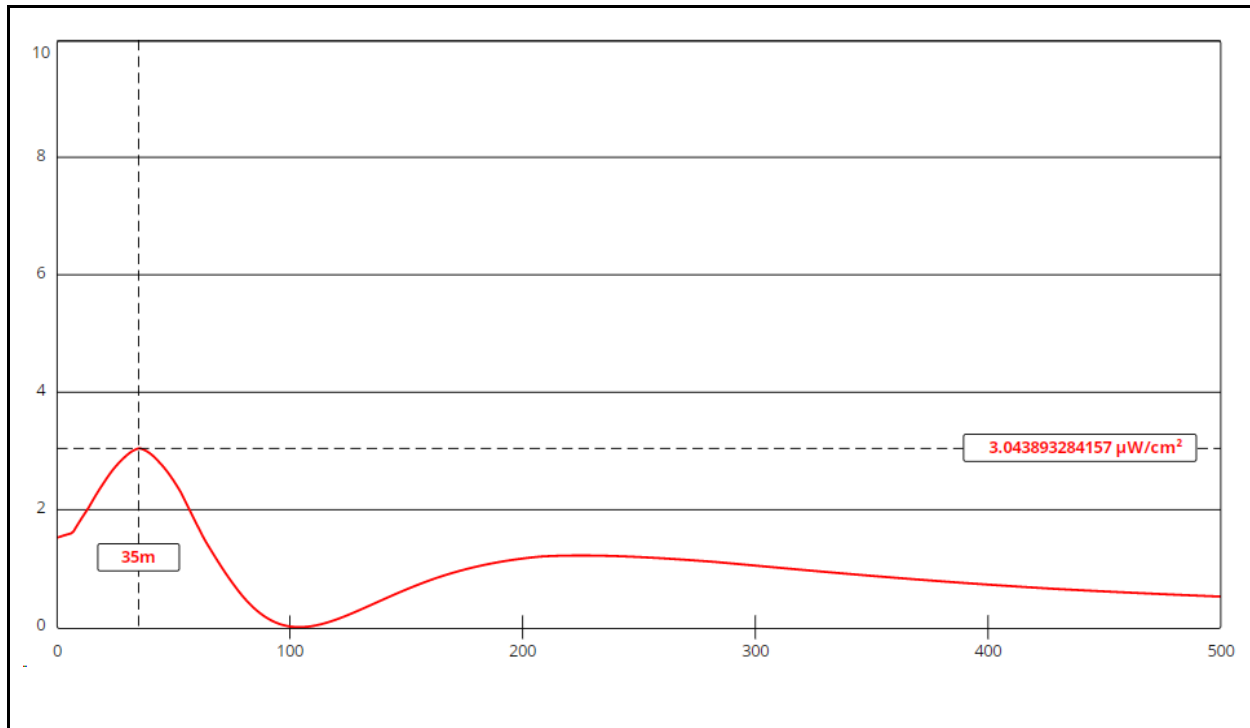
Calculations of the power density produced by the proposed antenna system assume a Type 2

Hatfield & Dawson Consulting Engineers

element pattern, which is the element pattern for the Bext model TFC2K-2 antenna proposed for use. The highest calculated ground level power density occurs at a distance of 35 meters from the base of the antenna support structure. At this point the power density is calculated to be $3.0 \mu\text{W}/\text{cm}^2$, which is 1.5% of $200 \mu\text{W}/\text{cm}^2$ (the FCC standard for uncontrolled environments).

These calculations show that the maximum calculated power density produced at two meters above ground level by the proposed operation of the WBLM auxiliary alone is less than 5% of the applicable FCC exposure limit at all locations between 1 and 500 meters from the base of the antenna support structure. Section 1.1307 of the Commission's Rules exempts applications for new facilities or modifications to existing facilities from the requirement of preparing an environmental assessment when the calculated emissions from the applicant's proposed facility are predicted to be less than 5% of the applicable FCC exposure limit. Therefore, the proposed facility is in compliance with Section 1.1301 *et seq* and no further analysis of RF exposure at this site is required in this application.

The permittee/licensee in coordination with other users of the site must reduce power or cease operation as necessary to protect persons having access to the site, tower or antenna from radiofrequency exposure in excess of FCC guidelines.



Ground-Level RF Exposure

OET FMModel

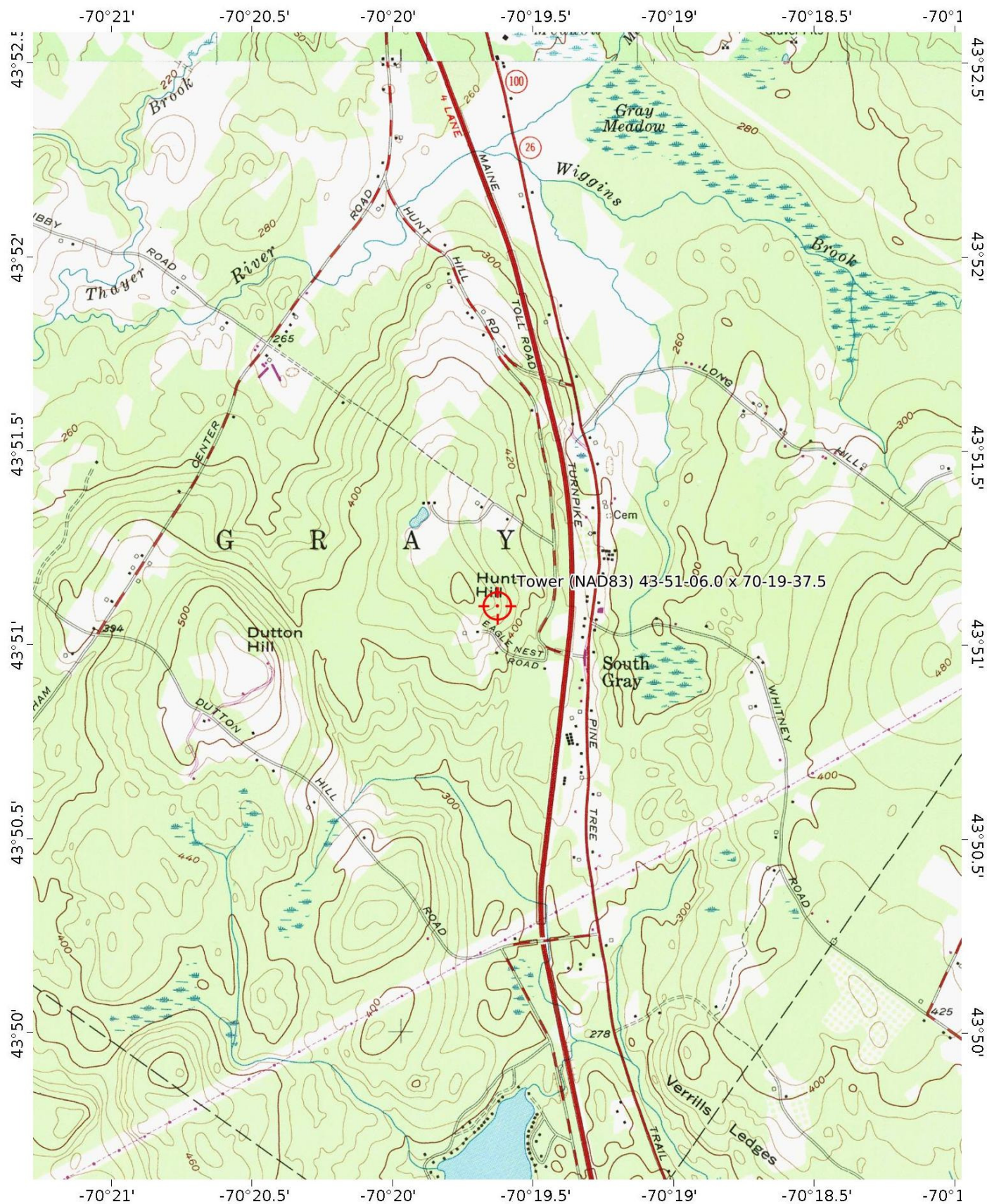
WBLM 275C0 Auxiliary

Antenna Type: Bext TFC2K-2 (Type 2)
No. of Elements: 2
Element Spacing: 0.85 wavelength

Distance: 500 meters
Horizontal ERP: 2.35 kW
Vertical ERP: 2.35 kW

Antenna Height: 77.7 meters AGL

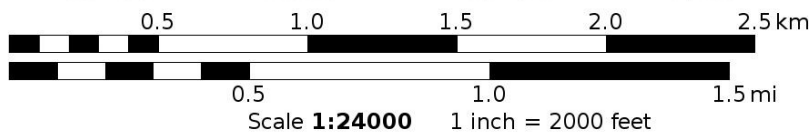
Maximum Calculated Power Density is $3.0 \mu\text{W}/\text{cm}^2$ at 35 meters from the antenna structure.



Mercator Projection

WGS84

UTM Zone 19T



Hatfield & Dawson Consulting Engineers

