



May 1, 2024
Station: K15HV-D
Location: ASRN 1015422

Dear Sir or Madam,

This will serve as the exhibit to document a proposed channel change to 32 for K15HV-D in accordance with the displacement relief rules of CFR 47 part 74.787(a)(4) which states:

A low power television, television translator, or DRT or DTDRT station which is causing or receiving interference or is predicted to cause or receive interference to or from an authorized TV broadcast station or allotment or other protected station or service, may at any time file a displacement relief application for change in channel, together with technical modifications that are necessary to avoid interference or continue serving the station's protected service area, provided the proposed transmitter site is not located more than 30 miles from the reference coordinates of the existing station's community of license.

We note that KRCR, owned by Sinclair Media has been awarded a CP per LMS #0000157557 for 1000kW ERP on channel 15 in Redding CA. This facility will completely overlap the K15HV protected contour as shown in the following map and is predicted to interfere with approximately 98% of K15HV's contour protected covered population.

For this reason we seek relief by changing the K15HV-D channel to 32 in this proposal.

K15HV does not cause interference to other facilities that exceed FCC limits as shown in the attached TVStudy output and agrees to accept any incoming interference from other licensed facilities.

Note that the coordinates and associated ASRN of the proposed facility differ slightly from those of the current K15HV-D license. This is to correct an earlier error and reflects the location and tower that the station has occupied for several years which is adjacent to the currently licensed ASRN.

Should you have any questions regarding this information please contact me.

A handwritten signature in blue ink that reads "James T. Stenberg".

James Stenberg
Principal Engineer

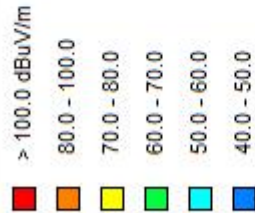
K15HV and KRCR-CP CONTOURS

K15HV-D

BLDTL-20080805AAT
 Latitude: 39-57-28.60 N
 Longitude: 121-42-52.90 W
 ERP: 1.04 kW
 Channel: 15
 Frequency: 479.0 MHz
 AMSL Height: 1114.0 m
 Elevation: 1065.0 m
 Horiz. Pattern: Directional
 Vert. Pattern: Yes
 Elec Tilt: 0.75

KRCR-TV.C

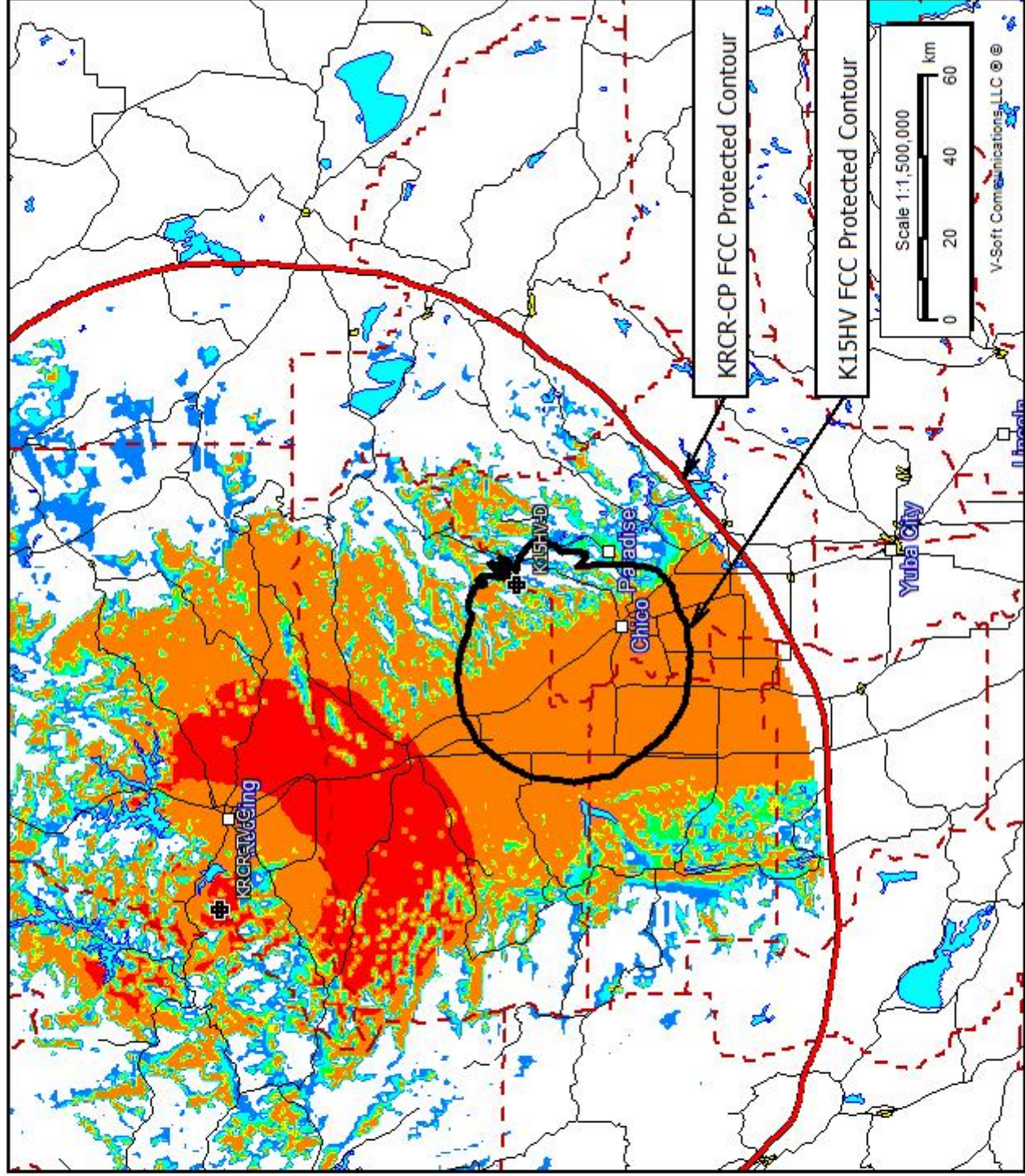
0000157557
 Latitude: 40-36-09.50 N
 Longitude: 122-39-04 W
 ERP: 1000.00 kW
 Channel: 15
 Frequency: 479.0 MHz
 AMSL Height: 1915.0 m
 Elevation: 1892.0 m
 Horiz. Pattern: Directional
 Vert. Pattern: Yes
 Elec Tilt: 1.75



Over The Air



Consulting LLC



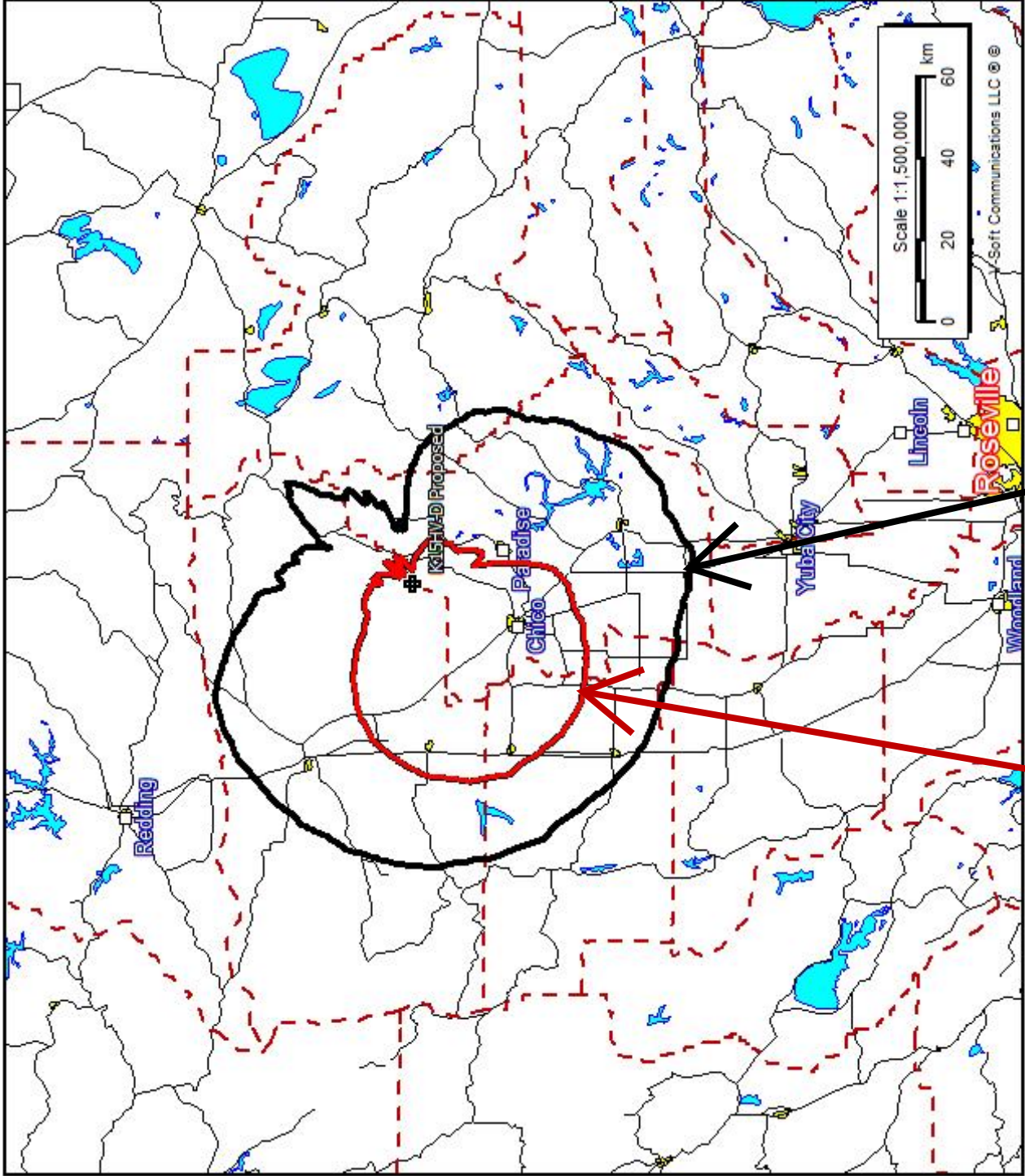
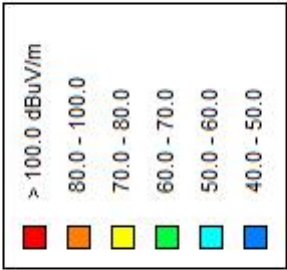
K15HV CURRENT AND PROPOSED PROTECTED CONTOURS

K15HV-D Proposed

Latitude: 39-57-28.60 N
Longitude: 121-42-52.90 W
ERP: 15.00 kW
Channel: 32
Frequency: 581.0 MHz
AMSL Height: 1130.1 m
Elevation: 1064.19 m
Horiz. Pattern: Directional
Vert. Pattern: Yes
Elec Tilt: 0.75

K15HV-D

BLDTL-20080805AAT
Latitude: 39-57-28.60 N
Longitude: 121-42-52.90 W
ERP: 1.04 kW
Channel: 15
Frequency: 479.0 MHz
AMSL Height: 1114.0 m
Elevation: 1065.0 m
Horiz. Pattern: Directional
Vert. Pattern: Yes
Elec Tilt: 0.75



K15HV CURRENT CONTOUR

K15HV PROPOSED CONTOUR

tvstudy v2.2.5 (4uoc83)

Database: localhost, Study: K15HV Proposed Displacement 32 El Pat, Model: Longley-Rice
Start: 2024.05.01 09:57:43

Study last edited: 2024.05.01 09:57:21

Proposal: K15HV-D DISP D32 LD APP CHICO, CA
File number: BLDTL20080805AAT
Facility ID: 129362
Station data: User record
Record ID: 7
Country: U.S.

Proposal "before": (none)

Study has been edited. Stations studied for impact of proposal:

Call	Chan	Svc	Status	City, State	File Number	Distance
K31ND-D km	D31		LD LIC	OROVILLE, CA	BLANK0000143488	40.3
KION-TV	D32		DT CP	MONTEREY, CA	BLANK0000219776	380.6
KSTV-LD	D32-		LD LIC	SACRAMENTO, CA	BLANK0000071667	155.0
KCNS	D32		DT LIC	SAN FRANCISCO, CA	BLANK0000108769	253.0
K15CX-D	D33		LD CP	OROVILLE, CA	BLANK0000242016	56.2
K33HH-D	D33		LD LIC	REDDING, CA	BLANK0000180657	103.2

Record parameters as studied:

Channel: D32
Mask: Stringent
Latitude: 39 57 29.00 N (NAD83)
Longitude: 121 42 53.00 W
Height AMSL: 1130.3 m
HAAT: 0.0 m
Peak ERP: 15.0 kW
Antenna: DIE-DLP-12M/VP 230.0 deg
Elev Pattn: DLP-12

50.5 dBu contour:

Azimuth	ERP	HAAT	Distance
0.0 deg	1.81 kW	129.1 m	35.1 km
45.0	2.03	81.7	31.0
90.0	0.637	98.8	27.1
135.0	8.56	326.0	54.4
180.0	15.0	587.3	67.7
225.0	12.2	706.2	69.4
270.0	14.7	659.6	69.6
315.0	10.6	463.2	61.8

Database HAAT does not agree with computed HAAT
Database HAAT: 0 m Computed HAAT: 381 m

Distance to Canadian border: 930.2 km

Distance to Mexican border: 902.9 km

Conditions at FCC monitoring station: Livermore CA
Bearing: 180.8 degrees Distance: 248.2 km

Proposal is not within the West Virginia quiet zone area

Conditions at Table Mountain receiving zone:
Bearing: 83.8 degrees Distance: 1398.6 km

Study cell size: 1.00 km
Profile point spacing: 0.10 km

Maximum new IX to full-service and Class A: 0.50%
Maximum new IX to LPTV: 2.00%

Interference to BLANK0000143488 LIC scenario 1

Distance	Call	Chan	Svc	Status	City, State	File Number
Desired:	K31ND-D	D31	LD	LIC	OROVILLE, CA	BLANK0000143488
Undesireds:	K15HV-D	DISPD32	LD	APP	CHICO, CA	BLDTL20080805AAT
40.3 km	KCVU	D30	DT	LIC	PARADISE, CA	BLANK0000141547
40.6	KEUV-LD	D31	LD	LIC	EUREKA, CA	BLANK0000142918
244.5	KTVU	D31	DT	LIC	OAKLAND, CA	BLANK0000212413
227.5	KFMS-LD	D31	LD	LIC	SACRAMENTO, CA	BLANK0000195704
111.5	K31KH-D	D31	LD	CP	STATELINE, NV	BDFCDTL20090824ABT
150.7						

Service area	Terrain-limited	IX-free, before	IX-free, after
Percent New IX			
5222.6	240,994	4824.0	229,376
0.43	0.41	4655.4	223,816
		4635.4	222,908

Undesired	Total IX	Unique IX, before	Unique IX, after
K15HV-D DISP D32 LD APP	55.1	3,429	20.1
KCVU D30 DT LIC	26.0	1,978	3.0
KTVU D31 DT LIC	10.0	43	3.0
KFMS-LD D31 LD LIC	145.6	3,582	125.5
		137.5	2,927
		3,539	

Interference to BLANK0000219776 CP scenario 1

Distance	Call	Chan	Svc	Status	City, State	File Number
Desired:	KION-TV	D32	DT	CP	MONTEREY, CA	BLANK0000219776

Undesireds:	K15HV-D	DISPD32	LD	APP	CHICO, CA	BLDTL20080805AAT
380.6 km						
	KTVU	D31	DT	LIC	OAKLAND, CA	BLANK0000212413
154.4						
	KVPT	D32	DT	LIC	FRESNO, CA	BLANK0000063002
210.0						
	KCNS	D32	DT	LIC	SAN FRANCISCO, CA	BLANK0000108769
154.4						
	K32LT-D	D32	DC	LIC	SAN LUIS OBISPO, CA	BLANK0000068200
156.8						
	KKPX-TV	D33	DT	LIC	SAN JOSE, CA	BLANK0000108766
147.0						

	Service area		Terrain-limited		IX-free, before		IX-free, after
Percent New IX							
29114.5	2,608,851	20994.8	917,432	20312.4	860,159	20311.4	860,159
0.01	0.00						

Undesired					Total IX		Unique IX, before		Unique IX, after
K15HV-D DISP D32 LD APP				5.1	0			1.0	0
KTVU D31 DT LIC				49.5	26,151	0.0	0	0.0	0
KVPT D32 DT LIC				84.3	2	46.0	2	46.0	2
KCNS D32 DT LIC				587.0	55,568	496.2	29,192	496.2	29,192
K32LT-D D32 DC LIC				48.3	645	35.3	17	34.3	17
KKPX-TV D33 DT LIC				51.5	26,183	9.1	1,686	9.1	1,686

Interference to BLANK0000071667 LIC scenario 1

	Call	Chan	Svc	Status	City, State	File Number
Distance						
Desired:	KSTV-LD	D32-	LD	LIC	SACRAMENTO, CA	BLANK0000071667

Undesireds:	K15HV-D	DISPD32	LD	APP	CHICO, CA	BLDTL20080805AAT
155.0 km						
	K31KH-D	D31	LD	CP	STATELINE, NV	BDFCDTL20090824ABT
103.5						
	K320I-D	D32	LD	CP	EUREKA, CA	BLANK0000153510
337.5						
	KION-TV	D32	DT	CP	MONTEREY, CA	BLANK0000219776
239.4						
	KCNS	D32	DT	LIC	SAN FRANCISCO, CA	BLANK0000108769
154.4						
	KFKK-LD	D32	LD	LIC	STOCKTON, CA	BLANK0000189784
111.1						

	Service area		Terrain-limited		IX-free, before		IX-free, after
Percent New IX							
4156.5	1,789,754	4070.6	1,786,132	4034.6	1,784,106	3857.2	1,750,146
4.40	1.90						

Undesired			Total IX		Unique IX, before		Unique IX, after
-----------	--	--	----------	--	-------------------	--	------------------

K15HV-D DISP D32 LD APP	189.4	34,565			177.4	33,960
KION-TV D32 DT CP	1.0	150	0.0	0	0.0	0
KCNS D32 DT LIC	33.9	1,876	30.9	1,671	20.0	1,271
KFKK-LD D32 LD LIC	5.0	355	1.0	0	1.0	0

Interference to BLANK0000071667 LIC scenario 2

Distance	Call	Chan	Svc	Status	City, State	File Number
Desired:	KSTV-LD	D32-	LD	LIC	SACRAMENTO, CA	BLANK0000071667
Undesireds:	K15HV-D DISPD32	LD	APP		CHICO, CA	BLDTL20080805AAT
155.0 km						
	K31KH-D	D31	LD	CP	STATELINE, NV	BDFCDTL20090824ABT
103.5						
	K320I-D	D32	LD	CP	EUREKA, CA	BLANK0000153510
337.5						
	KION-TV	D32	DT	LIC	MONTEREY, CA	BLCDT20030604ACO
239.4						
	KCNS	D32	DT	LIC	SAN FRANCISCO, CA	BLANK0000108769
154.4						
	KFKK-LD	D32	LD	LIC	STOCKTON, CA	BLANK0000189784
111.1						

Service area	Terrain-limited	IX-free, before	IX-free, after
Percent New IX			
4156.5	1,789,754	4070.6	1,786,132
4.40	1.90	4034.6	1,784,106
		3857.2	1,750,146

Undesired	Total IX	Unique IX, before	Unique IX, after
K15HV-D DISP D32 LD APP	189.4	34,565	177.4
KION-TV D32 DT LIC	1.0	150	0.0
KCNS D32 DT LIC	33.9	1,876	30.9
KFKK-LD D32 LD LIC	5.0	355	1.0
		1,671	20.0
		0	1,271
		0	0

Interference to BLANK0000108769 LIC scenario 1

Distance	Call	Chan	Svc	Status	City, State	File Number
Desired:	KCNS	D32	DT	LIC	SAN FRANCISCO, CA	BLANK0000108769
Undesireds:	K15HV-D DISPD32	LD	APP		CHICO, CA	BLDTL20080805AAT
253.0 km						
	KVPT	D32	DT	LIC	FRESNO, CA	BLANK0000063002
302.1						
	KION-TV	D32	DT	CP	MONTEREY, CA	BLANK0000219776
154.4						
	K32LT-D	D32	DC	LIC	SAN LUIS OBISPO, CA	BLANK0000068200
310.8						
	KKPX-TV	D33	DT	LIC	SAN JOSE, CA	BLANK0000108766

7.7

Service area		Terrain-limited		IX-free, before		IX-free, after	
Percent New IX							
37137.4	8,273,034	31928.2	7,178,921	28522.9	6,923,357	28144.6	6,916,319
1.33	0.10						

Undesired		Total IX		Unique IX, before		Unique IX, after	
K15HV-D DISP D32 LD APP	799.0	79,461				378.3	7,038
KVPT D32 DT LIC	817.5	193,407	738.8	175,497	366.5	120,506	
KION-TV D32 DT CP	2550.5	65,439	2450.7	46,054	2443.7	41,024	
KKPX-TV D33 DT LIC	137.1	16,103	116.0	14,628	116.0	14,628	

 Interference to BLANK0000108769 LIC scenario 2

Distance	Call	Chan	Svc	Status	City, State	File Number
Desired:	KCNS	D32	DT	LIC	SAN FRANCISCO, CA	BLANK0000108769
Undesireds:	K15HV-D DISPD32	LD	APP		CHICO, CA	BLDTL20080805AAT
253.0 km						
	KVPT	D32	DT	LIC	FRESNO, CA	BLANK0000063002
302.1						
	KION-TV	D32	DT	LIC	MONTEREY, CA	BLCDT20030604ACO
154.4						
	K32LT-D	D32	DC	LIC	SAN LUIS OBISPO, CA	BLANK0000068200
310.8						
	KKPX-TV	D33	DT	LIC	SAN JOSE, CA	BLANK0000108766
7.7						

Service area		Terrain-limited		IX-free, before		IX-free, after	
Percent New IX							
37137.4	8,273,034	31928.2	7,178,921	29039.3	6,936,563	28657.0	6,929,523
1.32	0.10						

Undesired		Total IX		Unique IX, before		Unique IX, after	
K15HV-D DISP D32 LD APP	799.0	79,461				382.3	7,040
KVPT D32 DT LIC	817.5	193,407	787.3	187,074	380.7	121,143	
KION-TV D32 DT LIC	1977.6	39,259	1934.3	32,848	1931.3	27,820	
KKPX-TV D33 DT LIC	137.1	16,103	124.1	16,025	124.1	16,025	

 Interference to BLANK0000242016 CP scenario 1

Distance	Call	Chan	Svc	Status	City, State	File Number
Desired:	K15CX-D	D33	LD	CP	OROVILLE, CA	BLANK0000242016
Undesireds:	K15HV-D DISPD32	LD	APP		CHICO, CA	BLDTL20080805AAT
56.2 km						
	K33HH-D	D33	LD	LIC	REDDING, CA	BLANK0000180657

154.7

KKPX-TV D33 DT LIC SAN JOSE, CA

BLANK0000108766

210.8

K33ER-D D33 LD LIC VERDI/MOGUL, NV

BLDTT20140618ABM

141.3

Service area	Terrain-limited	IX-free, before	IX-free, after
Percent New IX			
726.2 45,801	677.5 45,324	664.7 45,240	634.0 44,863
4.61 0.83			

Undesired	Total IX	Unique IX, before	Unique IX, after
K15HV-D DISP D32 LD APP 32.6	377		30.7 377
KKPX-TV D33 DT LIC 12.8	84	12.8 84	10.9 84

Interference to BLANK0000180657 LIC scenario 1

Distance	Call	Chan	Svc	Status	City, State	File Number
Desired:	K33HH-D	D33	LD	LIC	REDDING, CA	BLANK0000180657
Undesireds:	K15HV-D DISPD32	LD	APP		CHICO, CA	BLDTL20080805AAT
103.2 km	K320I-D	D32	LD	CP	EUREKA, CA	BLANK0000153510
122.6	K15CX-D	D33	LD	CP	OROVILLE, CA	BLANK0000242016
154.7	K33ER-D	D33	LD	LIC	VERDI/MOGUL, NV	BLDTT20140618ABM
250.0	KRCR-TV	D34	LD	LIC	REDDING, CA	BLCDT20131126ACK
12.3						

Service area	Terrain-limited	IX-free, before	IX-free, after
Percent New IX			
5202.6 188,656	4832.4 186,712	4663.8 182,408	4660.8 182,394
0.06 0.01			

Undesired	Total IX	Unique IX, before	Unique IX, after
K15HV-D DISP D32 LD APP 27.0	1,722		3.0 14
KRCR-TV D34 LD LIC 168.6	4,304	168.6 4,304	144.5 2,596

Interference to proposal scenario 1
3.49% interference received

Distance	Call	Chan	Svc	Status	City, State	File Number
Desired:	K15HV-D DISPD32	LD	APP		CHICO, CA	BLDTL20080805AAT
Undesireds:	K31ND-D	D31	LD	LIC	OROVILLE, CA	BLANK0000143488
40.3 km						

209.6	K320I-D	D32	LD	CP	EUREKA, CA	BLANK0000153510
155.0	KSTV-LD	D32-	LD	LIC	SACRAMENTO, CA	BLANK0000071667
253.0	KCNS	D32	DT	LIC	SAN FRANCISCO, CA	BLANK0000108769
56.2	K15CX-D	D33	LD	CP	OROVILLE, CA	BLANK0000242016
103.2	K33HH-D	D33	LD	LIC	REDDING, CA	BLANK0000180657

	Service area		Terrain-limited		IX-free		Percent IX
9368.8	298,540	8636.7	269,550	8573.0	260,148	0.74	3.49

Undesired			Total IX		Unique IX	Prcnt Unique IX
K31ND-D D31 LD LIC	2.0	4	1.0	4	0.01	0.00
KSTV-LD D32- LD LIC	2.0	1,047	0.0	0	0.00	0.00
KCNS D32 DT LIC	17.0	2,358	7.0	707	0.08	0.26
K15CX-D D33 LD CP	37.6	8,638	27.7	6,000	0.32	2.23
K33HH-D D33 LD LIC	17.0	23	17.0	23	0.20	0.01

Interference to proposal scenario 2
3.48% interference received

	Call	Chan	Svc	Status	City, State	File Number
Distance Desired:	K15HV-D	DISPD32	LD	APP	CHICO, CA	BLDTL20080805AAT

Undesireds: 40.3 km	K31ND-D	D31	LD	LIC	OROVILLE, CA	BLANK0000143488
209.6	K320I-D	D32	LD	CP	EUREKA, CA	BLANK0000153510
155.0	KSTV-LD	D32-	LD	LIC	SACRAMENTO, CA	BLANK0000071667
253.0	KCNS	D32	DT	LIC	SAN FRANCISCO, CA	BLANK0000108769
56.2	K15CX-D	D33	LD	CP	OROVILLE, CA	BLANK0000242016

	Service area		Terrain-limited		IX-free		Percent IX
9368.8	298,540	8636.7	269,550	8590.1	260,171	0.54	3.48

Undesired			Total IX		Unique IX	Prcnt Unique IX
K31ND-D D31 LD LIC	2.0	4	1.0	4	0.01	0.00
KSTV-LD D32- LD LIC	2.0	1,047	0.0	0	0.00	0.00
KCNS D32 DT LIC	17.0	2,358	7.0	707	0.08	0.26
K15CX-D D33 LD CP	37.6	8,638	27.7	6,000	0.32	2.23

Interference to proposal scenario 1

	Call	Chan	Svc	Status	City, State	File Number
--	------	------	-----	--------	-------------	-------------

Distance

Desired: K15HV-D DISPD32 LD APP CHICO, CA

BLDTL20080805AAT

	Service area		Terrain-limited		IX-free		Percent IX
9368.8	298,540	8636.7	269,550	8636.7	269,550	0.00	0.00